

*ENCANA FEEOIL & GAS (USA) INC*

WELL LOCATION, ENCAN A FEE 19-13D  
(K19CNE), LOCATED AS SHOWN IN LOT  
3 OF SECTION 19, T6S, R92W, 6th P.M.  
GARFIELD COUNTY, COLORADO.

1. Well footages are measured at right angles to the Section Lines.
2. Bearings are based on Global Positioning Satellite observations.
3. G.P.S. Operator:  
C.D. SLAUGH, (PDOP) = 2.4



THIS IS TO CERTIFY THAT THE ABOVE IS A TRUE AND  
FAITHFUL COPY OF THE ORIGINAL AS PREPARED FROM FIELD NOTES  
MADE BY ME OR UNDER MY CLOSE PERSONAL SUPERVISION AND  
THE LOCATION HAS BEEN STAKED ON THE GROUND AND THE LOCATION  
IS CORRECT TO THE BEST OF MY KNOWLEDGE.

ACRY W. STEWART

A circular professional seal for Stacy W. Stewart, a Colorado Registered Professional Land Surveyor. The seal contains the text "COLORADO REGISTERED", "STACY W. STEWART", "# 30125", and "02/24/11". The outer ring of the seal reads "PROFESSIONAL LAND SURVEYOR". A signature is written across the seal.

02/24/11

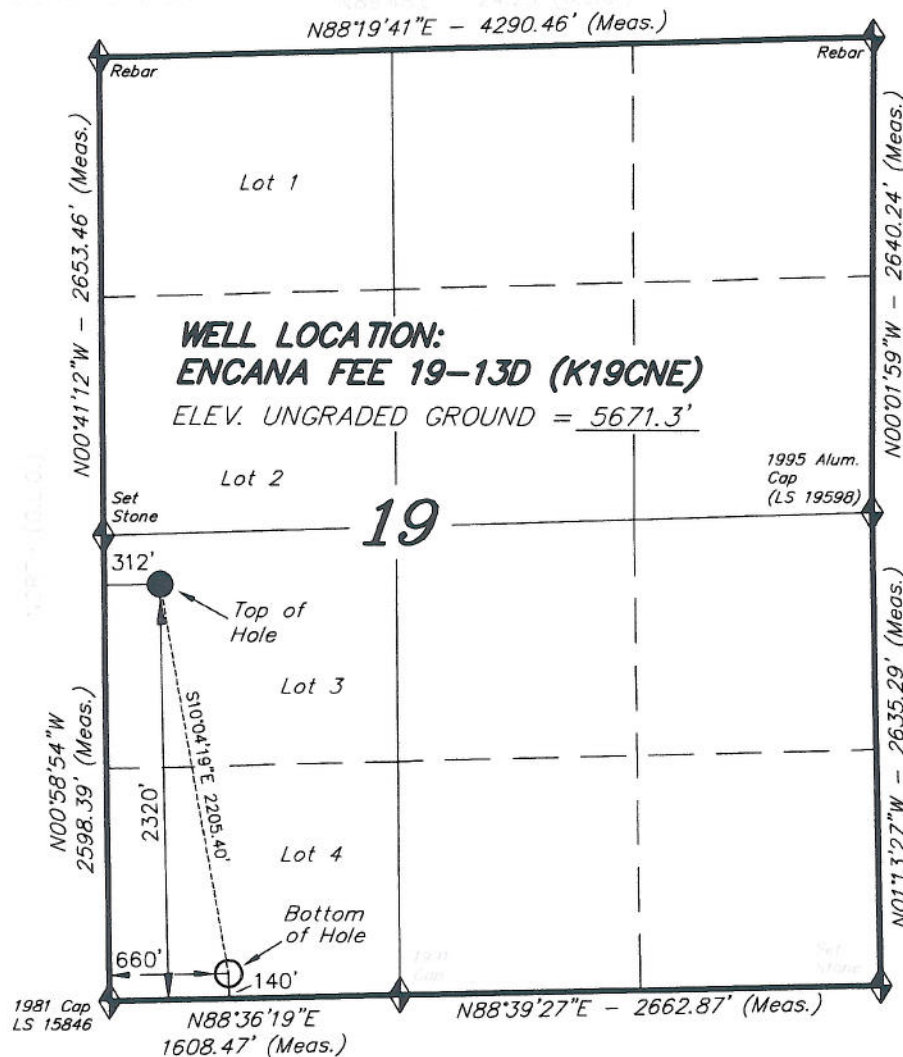
**TRI STATE LAND SURVEYING & CONSULTING**

180 NORTH VERNAL AVE. - VERNAL, UTAH 84078  
(435) 781-2501

SHEET

2j

OF 11



NAD 83 (SURFACE LOCATION)

LATITUDE = 39°30'40.25"  
(39.51181)

LONGITUDE = 107°42'49.78"  
(107.713826)

