

KARCH D10-17, 22 PRODUCTION FACILITY
Township 3 North, Range 64 West
Section 10: NW/4NE/4
Weld County, Colorado

Facility facing north
Picture Dated: 11/15/2010

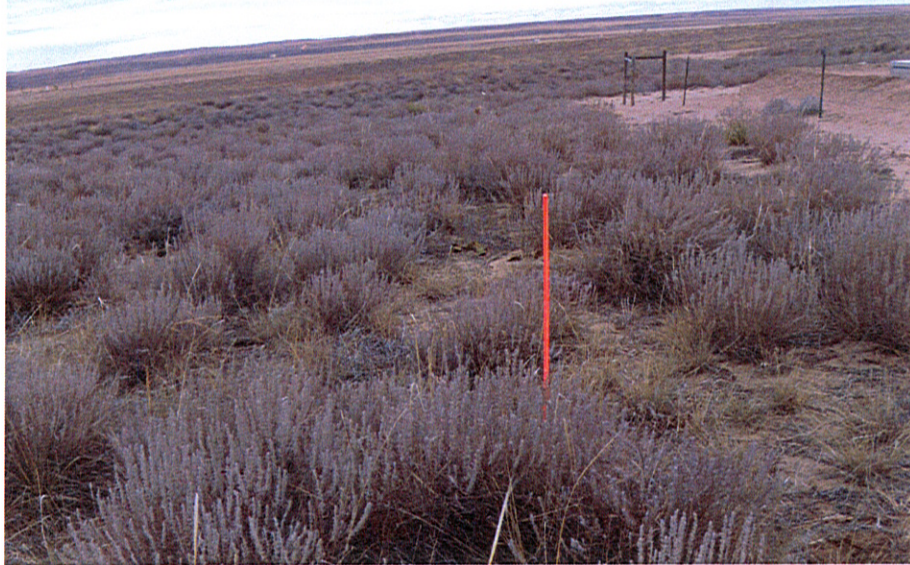


Facility facing south
Picture Dated: 11/15/2010



KARCH D10-17, 22 PRODUCTION FACILITY
Township 3 North, Range 64 West
Section 10: NW/4NE/4
Weld County, Colorado

Facility facing east
Picture Dated: 11/15/2010



Facility facing west
Picture Dated: 11/15/2010

