

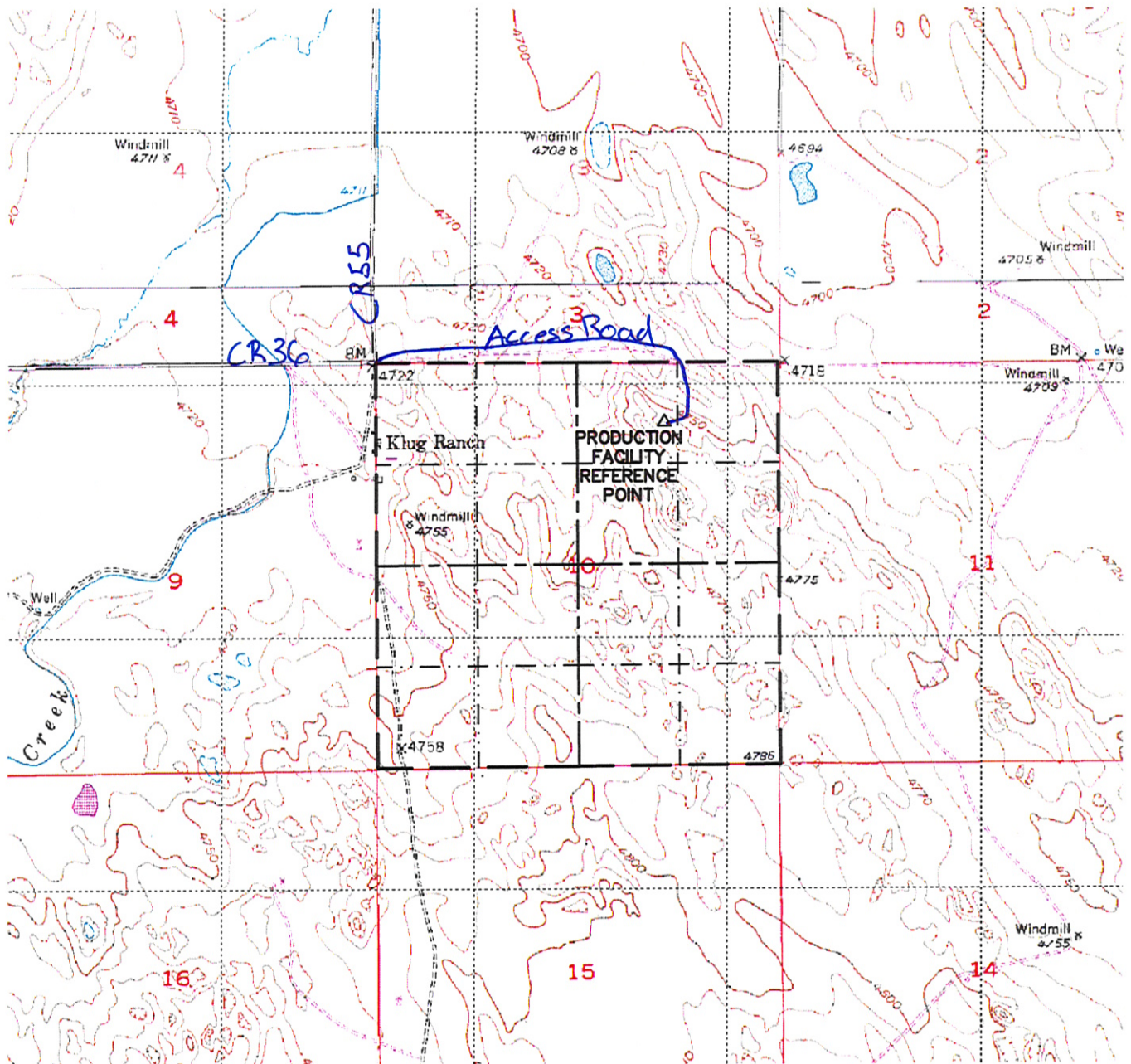
Steil Surveying Services, LLC

1102 West 19th Street P.O. BOX 2073

Cheyenne, Wyoming 82009

PRODUCTION FACILITY  
ACCESS ROAD MAP  
FOR THE PROPOSED KARCH D10-17 AND  
KARCH D10-22 WELLS

SECTION 10  
TOWNSHIP 3 NORTH  
RANGE 64 WEST



0 2000

Scale: 1" = 2000'