

Well Name: Badding USX W25-07D

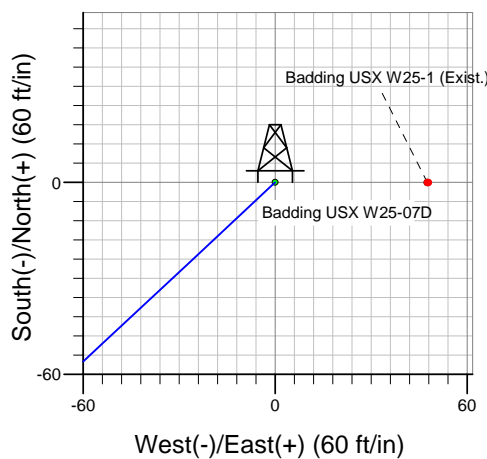
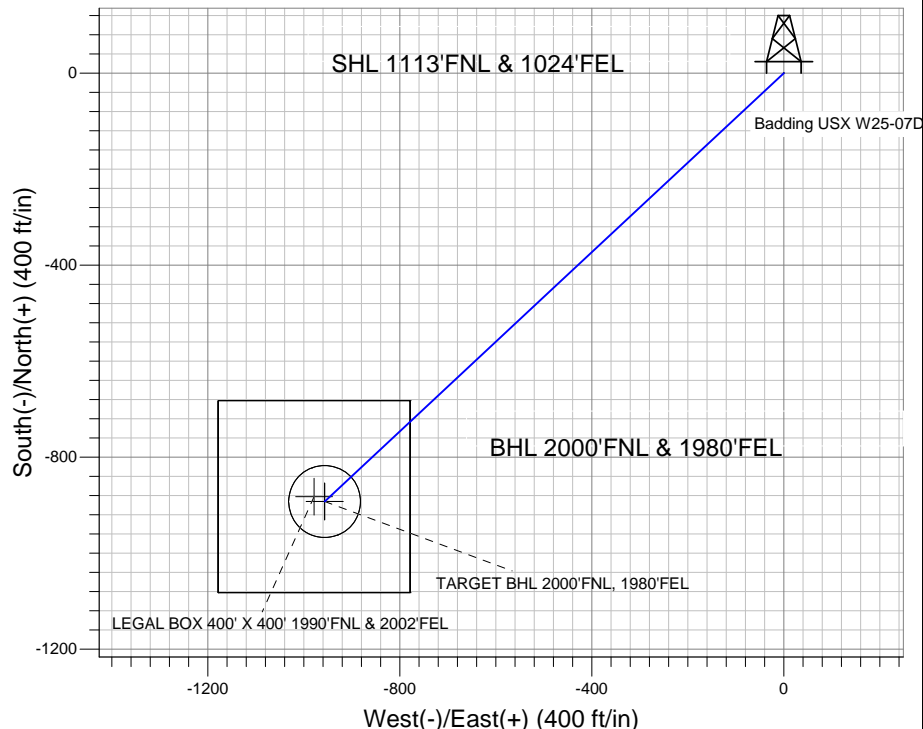
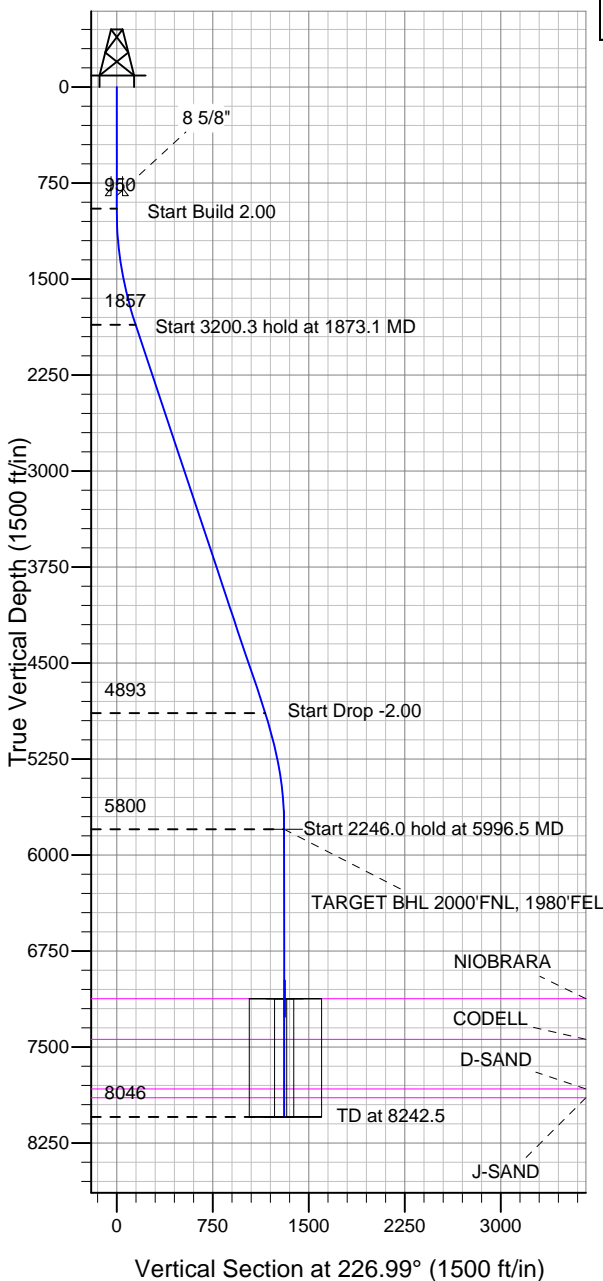
Surface Location: Badding USX W25-07D Pad Sec.25-T2N-R66W
 North American Datum 1983 US State Plane 1983 Colorado Northern Zone

Ground Elevation: 5025.0

+N/-S	+E/-W	Northing	Easting	Latitude	Longitude	Slot
0.0	0.0	1285160.12	3218290.28	40.113520	-104.719510	

Original Well Elev WELL @ 5038.0ft (Original Well Elev)

NOBLE ENERGY INC WELD COUNTY CO



Badding USX W25-07D Pad Sec.25-T2N-R66W
 Badding USX W25-07D
 Noble Badding USX W25-07D Plan #1 (5-02-11)
 7:01, May 03 2011



Azimuths to True North
 Magnetic North: 8.83°

Magnetic Field
 Strength: 52996.6snT
 Dip Angle: 66.83°
 Date: 5/2/2011
 Model: IGRF2010

WELLBORE TARGET DETAILS (LAT/LONG)

Name	TVD	+N/-S	+E/-W	Latitude	Longitude	Shape
TARGET BHL 2000'FNL, 1980'FEL	5800.0	-892.5	-956.6	40.111070	-104.722930	Point
LEGAL BOX 400' X 400' 1990'FNL & 2002'FEL	7123.0	-882.5	-978.6	40.111097	-104.723009	Rectangle (Sides: L400.0 W400.0)
TARGET CIRCLE 2000'FNL & 1980'FEL	7123.0	-892.5	-956.6	40.111070	-104.722930	Circle (Radius: 75.0)

SECTION DETAILS

Sec	MD	Inc	Azi	TVD	+N/-S	+E/-W	DLeg	TFace	VSec	Target
1	0.0	0.00	0.00	0.0	0.0	0.0	0.00	0.00	0.0	
2	950.0	0.00	0.00	950.0	0.0	0.0	0.00	0.00	0.0	
3	1873.1	18.46	226.99	1857.2	-100.6	-107.8	2.00	226.99	147.4	
4	5073.4	18.46	226.99	4892.8	-791.9	-848.8	0.00	0.00	1160.9	
5	5996.5	0.00	0.00	5800.0	-892.5	-956.6	2.00	180.00	1308.3	TARGET BHL 2000'FNL, 1980'FEL
6	8242.5	0.00	0.00	8046.0	-892.5	-956.6	0.00	0.00	1308.3	



Directional

NOBLE ENERGY INC WELD COUNTY CO

SEC.25-T2N-R66W

Badding USX W25-07D Pad Sec.25-T2N-R66W

Badding USX W25-07D

Wellbore #1

Plan: Noble Badding USX W25-07D Plan #1 (5-02-11)

Standard Planning Report

03 May, 2011



Database:	Landmark	Local Co-ordinate Reference:	Well Badding USX W25-07D
Company:	NOBLE ENERGY INC WELD COUNTY CO	TVD Reference:	WELL @ 5038.0ft (Original Well Elev)
Project:	SEC.25-T2N-R66W	MD Reference:	WELL @ 5038.0ft (Original Well Elev)
Site:	Badding USX W25-07D Pad Sec.25-T2N-R66W	North Reference:	True
Well:	Badding USX W25-07D	Survey Calculation Method:	Minimum Curvature
Wellbore:	Wellbore #1		
Design:	Noble Badding USX W25-07D Plan #1 (5-02-1		

Project	SEC.25-T2N-R66W, Weld County, Colorado		
Map System:	US State Plane 1983	System Datum:	Mean Sea Level
Geo Datum:	North American Datum 1983		Using Well Reference Point
Map Zone:	Colorado Northern Zone		Using geodetic scale factor

Site						Badding USX W25-07D Pad Sec.25-T2N-R66W											
Site Position:						Northing:			1,285,160.13 ft			Latitude:			40.113520		
From:			Lat/Long			Easting:			3,218,290.28 ft			Longitude:			-104.719510		
Position Uncertainty:			0.0 ft			Slot Radius:			"			Grid Convergence:			0.50 °		

Well	Badding USX W25-07D					
Well Position	+N-S	0.0 ft	Northing:	1,285,160.12 ft	Latitude:	40.113520
	+E-W	0.0 ft	Easting:	3,218,290.28 ft	Longitude:	-104.719510
Position Uncertainty		0.0 ft	Wellhead Elevation:	ft	Ground Level:	5,025.0 ft

Wellbore	Wellbore #1				
Magnetics	Model Name	Sample Date	Declination (°)	Dip Angle (°)	Field Strength (nT)
	IGRF2010	5/2/2011	8.83	66.83	52,997

Design	Noble Badding USX W25-07D Plan #1 (5-02-11)			
Audit Notes:				
Version:	Phase:	PROTOTYPE	Tie On Depth:	0.0
Vertical Section:	Depth From (TVD) (ft)	+N/-S (ft)	+E/-W (ft)	Direction (°)
	0.0	0.0	0.0	226.99

Plan Sections										
Measured Depth (ft)	Inclination (°)	Azimuth (°)	Vertical Depth (ft)	+N/-S (ft)	+E/-W (ft)	Dogleg Rate (°/100ft)	Build Rate (°/100ft)	Turn Rate (°/100ft)	TFO (°)	Target
0.0	0.00	0.00	0.0	0.0	0.0	0.00	0.00	0.00	0.00	
950.0	0.00	0.00	950.0	0.0	0.0	0.00	0.00	0.00	0.00	
1,873.1	18.46	226.99	1,857.2	-100.6	-107.8	2.00	2.00	0.00	226.99	
5,073.4	18.46	226.99	4,892.8	-791.9	-848.8	0.00	0.00	0.00	0.00	
5,996.5	0.00	0.00	5,800.0	-892.5	-956.6	2.00	-2.00	0.00	180.00	TARGET BHL 200C
8,242.5	0.00	0.00	8,046.0	-892.5	-956.6	0.00	0.00	0.00	0.00	

Database:	Landmark	Local Co-ordinate Reference:	Well Badding USX W25-07D
Company:	NOBLE ENERGY INC WELD COUNTY CO	TVD Reference:	WELL @ 5038.0ft (Original Well Elev)
Project:	SEC.25-T2N-R66W	MD Reference:	WELL @ 5038.0ft (Original Well Elev)
Site:	Badding USX W25-07D Pad Sec.25-T2N-R66W	North Reference:	True
Well:	Badding USX W25-07D	Survey Calculation Method:	Minimum Curvature
Wellbore:	Wellbore #1		
Design:	Noble Badding USX W25-07D Plan #1 (5-02-1		

Planned Survey

Measured Depth (ft)	Inclination (°)	Azimuth (°)	Vertical Depth (ft)	+N/-S (ft)	+E/-W (ft)	Vertical Section (ft)	Dogleg Rate (°/100ft)	Build Rate (°/100ft)	Turn Rate (°/100ft)
0.0	0.00	0.00	0.0	0.0	0.0	0.0	0.00	0.00	0.00
40.0	0.00	0.00	40.0	0.0	0.0	0.0	0.00	0.00	0.00
80.0	0.00	0.00	80.0	0.0	0.0	0.0	0.00	0.00	0.00
120.0	0.00	0.00	120.0	0.0	0.0	0.0	0.00	0.00	0.00
160.0	0.00	0.00	160.0	0.0	0.0	0.0	0.00	0.00	0.00
200.0	0.00	0.00	200.0	0.0	0.0	0.0	0.00	0.00	0.00
240.0	0.00	0.00	240.0	0.0	0.0	0.0	0.00	0.00	0.00
280.0	0.00	0.00	280.0	0.0	0.0	0.0	0.00	0.00	0.00
320.0	0.00	0.00	320.0	0.0	0.0	0.0	0.00	0.00	0.00
360.0	0.00	0.00	360.0	0.0	0.0	0.0	0.00	0.00	0.00
400.0	0.00	0.00	400.0	0.0	0.0	0.0	0.00	0.00	0.00
440.0	0.00	0.00	440.0	0.0	0.0	0.0	0.00	0.00	0.00
480.0	0.00	0.00	480.0	0.0	0.0	0.0	0.00	0.00	0.00
520.0	0.00	0.00	520.0	0.0	0.0	0.0	0.00	0.00	0.00
560.0	0.00	0.00	560.0	0.0	0.0	0.0	0.00	0.00	0.00
600.0	0.00	0.00	600.0	0.0	0.0	0.0	0.00	0.00	0.00
640.0	0.00	0.00	640.0	0.0	0.0	0.0	0.00	0.00	0.00
680.0	0.00	0.00	680.0	0.0	0.0	0.0	0.00	0.00	0.00
720.0	0.00	0.00	720.0	0.0	0.0	0.0	0.00	0.00	0.00
760.0	0.00	0.00	760.0	0.0	0.0	0.0	0.00	0.00	0.00
800.0	0.00	0.00	800.0	0.0	0.0	0.0	0.00	0.00	0.00
840.0	0.00	0.00	840.0	0.0	0.0	0.0	0.00	0.00	0.00
850.0	0.00	0.00	850.0	0.0	0.0	0.0	0.00	0.00	0.00
8 5/8"									
880.0	0.00	0.00	880.0	0.0	0.0	0.0	0.00	0.00	0.00
920.0	0.00	0.00	920.0	0.0	0.0	0.0	0.00	0.00	0.00
950.0	0.00	0.00	950.0	0.0	0.0	0.0	0.00	0.00	0.00
960.0	0.20	226.99	960.0	0.0	0.0	0.0	2.00	2.00	0.00
1,000.0	1.00	226.99	1,000.0	-0.3	-0.3	0.4	2.00	2.00	0.00
1,040.0	1.80	226.99	1,040.0	-1.0	-1.0	1.4	2.00	2.00	0.00
1,080.0	2.60	226.99	1,080.0	-2.0	-2.2	2.9	2.00	2.00	0.00
1,120.0	3.40	226.99	1,119.9	-3.4	-3.7	5.0	2.00	2.00	0.00
1,160.0	4.20	226.99	1,159.8	-5.2	-5.6	7.7	2.00	2.00	0.00
1,200.0	5.00	226.99	1,199.7	-7.4	-8.0	10.9	2.00	2.00	0.00
1,240.0	5.80	226.99	1,239.5	-10.0	-10.7	14.7	2.00	2.00	0.00
1,280.0	6.60	226.99	1,279.3	-13.0	-13.9	19.0	2.00	2.00	0.00
1,320.0	7.40	226.99	1,319.0	-16.3	-17.4	23.9	2.00	2.00	0.00
1,360.0	8.20	226.99	1,358.6	-20.0	-21.4	29.3	2.00	2.00	0.00
1,400.0	9.00	226.99	1,398.2	-24.1	-25.8	35.3	2.00	2.00	0.00
1,440.0	9.80	226.99	1,437.6	-28.5	-30.6	41.8	2.00	2.00	0.00
1,480.0	10.60	226.99	1,477.0	-33.3	-35.7	48.9	2.00	2.00	0.00
1,520.0	11.40	226.99	1,516.2	-38.6	-41.3	56.5	2.00	2.00	0.00
1,560.0	12.20	226.99	1,555.4	-44.1	-47.3	64.7	2.00	2.00	0.00
1,600.0	13.00	226.99	1,594.4	-50.1	-53.7	73.4	2.00	2.00	0.00
1,640.0	13.80	226.99	1,633.3	-56.4	-60.5	82.7	2.00	2.00	0.00
1,680.0	14.60	226.99	1,672.1	-63.1	-67.6	92.5	2.00	2.00	0.00
1,720.0	15.40	226.99	1,710.8	-70.2	-75.2	102.9	2.00	2.00	0.00
1,760.0	16.20	226.99	1,749.3	-77.6	-83.2	113.7	2.00	2.00	0.00
1,800.0	17.00	226.99	1,787.6	-85.4	-91.5	125.2	2.00	2.00	0.00
1,840.0	17.80	226.99	1,825.8	-93.6	-100.3	137.1	2.00	2.00	0.00
1,873.1	18.46	226.99	1,857.2	-100.6	-107.8	147.4	2.00	2.00	0.00
1,880.0	18.46	226.99	1,863.8	-102.1	-109.4	149.6	0.00	0.00	0.00
1,920.0	18.46	226.99	1,901.7	-110.7	-118.7	162.3	0.00	0.00	0.00

Database:	Landmark	Local Co-ordinate Reference:	Well Badding USX W25-07D
Company:	NOBLE ENERGY INC WELD COUNTY CO	TVD Reference:	WELL @ 5038.0ft (Original Well Elev)
Project:	SEC.25-T2N-R66W	MD Reference:	WELL @ 5038.0ft (Original Well Elev)
Site:	Badding USX W25-07D Pad Sec.25-T2N-R66W	North Reference:	True
Well:	Badding USX W25-07D	Survey Calculation Method:	Minimum Curvature
Wellbore:	Wellbore #1		
Design:	Noble Badding USX W25-07D Plan #1 (5-02-1		

Planned Survey									
Measured Depth (ft)	Inclination (°)	Azimuth (°)	Vertical Depth (ft)	+N/-S (ft)	+E/-W (ft)	Vertical Section (ft)	Dogleg Rate (°/100ft)	Build Rate (°/100ft)	Turn Rate (°/100ft)
1,960.0	18.46	226.99	1,939.6	-119.4	-127.9	175.0	0.00	0.00	0.00
2,000.0	18.46	226.99	1,977.6	-128.0	-137.2	187.6	0.00	0.00	0.00
2,040.0	18.46	226.99	2,015.5	-136.6	-146.4	200.3	0.00	0.00	0.00
2,080.0	18.46	226.99	2,053.5	-145.3	-155.7	213.0	0.00	0.00	0.00
2,120.0	18.46	226.99	2,091.4	-153.9	-165.0	225.6	0.00	0.00	0.00
2,160.0	18.46	226.99	2,129.3	-162.6	-174.2	238.3	0.00	0.00	0.00
2,200.0	18.46	226.99	2,167.3	-171.2	-183.5	251.0	0.00	0.00	0.00
2,240.0	18.46	226.99	2,205.2	-179.8	-192.8	263.6	0.00	0.00	0.00
2,280.0	18.46	226.99	2,243.2	-188.5	-202.0	276.3	0.00	0.00	0.00
2,320.0	18.46	226.99	2,281.1	-197.1	-211.3	289.0	0.00	0.00	0.00
2,360.0	18.46	226.99	2,319.1	-205.8	-220.5	301.6	0.00	0.00	0.00
2,400.0	18.46	226.99	2,357.0	-214.4	-229.8	314.3	0.00	0.00	0.00
2,440.0	18.46	226.99	2,394.9	-223.0	-239.1	327.0	0.00	0.00	0.00
2,480.0	18.46	226.99	2,432.9	-231.7	-248.3	339.6	0.00	0.00	0.00
2,520.0	18.46	226.99	2,470.8	-240.3	-257.6	352.3	0.00	0.00	0.00
2,560.0	18.46	226.99	2,508.8	-249.0	-266.9	365.0	0.00	0.00	0.00
2,600.0	18.46	226.99	2,546.7	-257.6	-276.1	377.6	0.00	0.00	0.00
2,640.0	18.46	226.99	2,584.6	-266.2	-285.4	390.3	0.00	0.00	0.00
2,680.0	18.46	226.99	2,622.6	-274.9	-294.6	403.0	0.00	0.00	0.00
2,720.0	18.46	226.99	2,660.5	-283.5	-303.9	415.6	0.00	0.00	0.00
2,760.0	18.46	226.99	2,698.5	-292.2	-313.2	428.3	0.00	0.00	0.00
2,800.0	18.46	226.99	2,736.4	-300.8	-322.4	441.0	0.00	0.00	0.00
2,840.0	18.46	226.99	2,774.3	-309.5	-331.7	453.6	0.00	0.00	0.00
2,880.0	18.46	226.99	2,812.3	-318.1	-340.9	466.3	0.00	0.00	0.00
2,920.0	18.46	226.99	2,850.2	-326.7	-350.2	479.0	0.00	0.00	0.00
2,960.0	18.46	226.99	2,888.2	-335.4	-359.5	491.6	0.00	0.00	0.00
3,000.0	18.46	226.99	2,926.1	-344.0	-368.7	504.3	0.00	0.00	0.00
3,040.0	18.46	226.99	2,964.1	-352.7	-378.0	517.0	0.00	0.00	0.00
3,080.0	18.46	226.99	3,002.0	-361.3	-387.3	529.6	0.00	0.00	0.00
3,120.0	18.46	226.99	3,039.9	-369.9	-396.5	542.3	0.00	0.00	0.00
3,160.0	18.46	226.99	3,077.9	-378.6	-405.8	555.0	0.00	0.00	0.00
3,200.0	18.46	226.99	3,115.8	-387.2	-415.0	567.6	0.00	0.00	0.00
3,240.0	18.46	226.99	3,153.8	-395.9	-424.3	580.3	0.00	0.00	0.00
3,280.0	18.46	226.99	3,191.7	-404.5	-433.6	593.0	0.00	0.00	0.00
3,320.0	18.46	226.99	3,229.6	-413.1	-442.8	605.6	0.00	0.00	0.00
3,360.0	18.46	226.99	3,267.6	-421.8	-452.1	618.3	0.00	0.00	0.00
3,400.0	18.46	226.99	3,305.5	-430.4	-461.3	631.0	0.00	0.00	0.00
3,440.0	18.46	226.99	3,343.5	-439.1	-470.6	643.6	0.00	0.00	0.00
3,480.0	18.46	226.99	3,381.4	-447.7	-479.9	656.3	0.00	0.00	0.00
3,520.0	18.46	226.99	3,419.4	-456.3	-489.1	669.0	0.00	0.00	0.00
3,560.0	18.46	226.99	3,457.3	-465.0	-498.4	681.6	0.00	0.00	0.00
3,600.0	18.46	226.99	3,495.2	-473.6	-507.7	694.3	0.00	0.00	0.00
3,640.0	18.46	226.99	3,533.2	-482.3	-516.9	707.0	0.00	0.00	0.00
3,680.0	18.46	226.99	3,571.1	-490.9	-526.2	719.6	0.00	0.00	0.00
3,720.0	18.46	226.99	3,609.1	-499.6	-535.4	732.3	0.00	0.00	0.00
3,760.0	18.46	226.99	3,647.0	-508.2	-544.7	745.0	0.00	0.00	0.00
3,800.0	18.46	226.99	3,684.9	-516.8	-554.0	757.6	0.00	0.00	0.00
3,840.0	18.46	226.99	3,722.9	-525.5	-563.2	770.3	0.00	0.00	0.00
3,880.0	18.46	226.99	3,760.8	-534.1	-572.5	783.0	0.00	0.00	0.00
3,920.0	18.46	226.99	3,798.8	-542.8	-581.7	795.6	0.00	0.00	0.00
3,960.0	18.46	226.99	3,836.7	-551.4	-591.0	808.3	0.00	0.00	0.00
4,000.0	18.46	226.99	3,874.7	-560.0	-600.3	821.0	0.00	0.00	0.00
4,040.0	18.46	226.99	3,912.6	-568.7	-609.5	833.6	0.00	0.00	0.00

Database:	Landmark	Local Co-ordinate Reference:	Well Badding USX W25-07D
Company:	NOBLE ENERGY INC WELD COUNTY CO	TVD Reference:	WELL @ 5038.0ft (Original Well Elev)
Project:	SEC.25-T2N-R66W	MD Reference:	WELL @ 5038.0ft (Original Well Elev)
Site:	Badding USX W25-07D Pad Sec.25-T2N-R66W	North Reference:	True
Well:	Badding USX W25-07D	Survey Calculation Method:	Minimum Curvature
Wellbore:	Wellbore #1		
Design:	Noble Badding USX W25-07D Plan #1 (5-02-1		

Planned Survey										
Measured Depth (ft)	Inclination (°)	Azimuth (°)	Vertical Depth (ft)	+N/-S (ft)	+E/-W (ft)	Vertical Section (ft)	Dogleg Rate (°/100ft)	Build Rate (°/100ft)	Turn Rate (°/100ft)	
4,080.0	18.46	226.99	3,950.5	-577.3	-618.8	846.3	0.00	0.00	0.00	
4,120.0	18.46	226.99	3,988.5	-586.0	-628.1	859.0	0.00	0.00	0.00	
4,160.0	18.46	226.99	4,026.4	-594.6	-637.3	871.6	0.00	0.00	0.00	
4,200.0	18.46	226.99	4,064.4	-603.2	-646.6	884.3	0.00	0.00	0.00	
4,240.0	18.46	226.99	4,102.3	-611.9	-655.8	897.0	0.00	0.00	0.00	
4,280.0	18.46	226.99	4,140.2	-620.5	-665.1	909.6	0.00	0.00	0.00	
4,320.0	18.46	226.99	4,178.2	-629.2	-674.4	922.3	0.00	0.00	0.00	
4,360.0	18.46	226.99	4,216.1	-637.8	-683.6	935.0	0.00	0.00	0.00	
4,400.0	18.46	226.99	4,254.1	-646.4	-692.9	947.6	0.00	0.00	0.00	
4,440.0	18.46	226.99	4,292.0	-655.1	-702.1	960.3	0.00	0.00	0.00	
4,480.0	18.46	226.99	4,330.0	-663.7	-711.4	973.0	0.00	0.00	0.00	
4,520.0	18.46	226.99	4,367.9	-672.4	-720.7	985.6	0.00	0.00	0.00	
4,560.0	18.46	226.99	4,405.8	-681.0	-729.9	998.3	0.00	0.00	0.00	
4,600.0	18.46	226.99	4,443.8	-689.7	-739.2	1,011.0	0.00	0.00	0.00	
4,640.0	18.46	226.99	4,481.7	-698.3	-748.5	1,023.6	0.00	0.00	0.00	
4,680.0	18.46	226.99	4,519.7	-706.9	-757.7	1,036.3	0.00	0.00	0.00	
4,720.0	18.46	226.99	4,557.6	-715.6	-767.0	1,049.0	0.00	0.00	0.00	
4,760.0	18.46	226.99	4,595.5	-724.2	-776.2	1,061.6	0.00	0.00	0.00	
4,800.0	18.46	226.99	4,633.5	-732.9	-785.5	1,074.3	0.00	0.00	0.00	
4,840.0	18.46	226.99	4,671.4	-741.5	-794.8	1,087.0	0.00	0.00	0.00	
4,880.0	18.46	226.99	4,709.4	-750.1	-804.0	1,099.6	0.00	0.00	0.00	
4,920.0	18.46	226.99	4,747.3	-758.8	-813.3	1,112.3	0.00	0.00	0.00	
4,960.0	18.46	226.99	4,785.2	-767.4	-822.5	1,125.0	0.00	0.00	0.00	
5,000.0	18.46	226.99	4,823.2	-776.1	-831.8	1,137.6	0.00	0.00	0.00	
5,040.0	18.46	226.99	4,861.1	-784.7	-841.1	1,150.3	0.00	0.00	0.00	
5,073.4	18.46	226.99	4,892.8	-791.9	-848.8	1,160.9	0.00	0.00	0.00	
5,080.0	18.33	226.99	4,899.1	-793.3	-850.3	1,162.9	2.00	-2.00	0.00	
5,120.0	17.53	226.99	4,937.1	-801.7	-859.3	1,175.3	2.00	-2.00	0.00	
5,160.0	16.73	226.99	4,975.4	-809.8	-867.9	1,187.0	2.00	-2.00	0.00	
5,200.0	15.93	226.99	5,013.7	-817.4	-876.2	1,198.3	2.00	-2.00	0.00	
5,240.0	15.13	226.99	5,052.3	-824.8	-884.0	1,209.0	2.00	-2.00	0.00	
5,280.0	14.33	226.99	5,091.0	-831.7	-891.4	1,219.2	2.00	-2.00	0.00	
5,320.0	13.53	226.99	5,129.8	-838.3	-898.5	1,228.8	2.00	-2.00	0.00	
5,360.0	12.73	226.99	5,168.7	-844.5	-905.1	1,237.9	2.00	-2.00	0.00	
5,400.0	11.93	226.99	5,207.8	-850.3	-911.4	1,246.4	2.00	-2.00	0.00	
5,440.0	11.13	226.99	5,247.0	-855.7	-917.2	1,254.4	2.00	-2.00	0.00	
5,480.0	10.33	226.99	5,286.3	-860.8	-922.7	1,261.9	2.00	-2.00	0.00	
5,520.0	9.53	226.99	5,325.7	-865.5	-927.7	1,268.8	2.00	-2.00	0.00	
5,560.0	8.73	226.99	5,365.2	-869.9	-932.3	1,275.1	2.00	-2.00	0.00	
5,600.0	7.93	226.99	5,404.8	-873.8	-936.6	1,280.9	2.00	-2.00	0.00	
5,640.0	7.13	226.99	5,444.4	-877.4	-940.4	1,286.1	2.00	-2.00	0.00	
5,680.0	6.33	226.99	5,484.2	-880.6	-943.8	1,290.8	2.00	-2.00	0.00	
5,720.0	5.53	226.99	5,524.0	-883.4	-946.9	1,295.0	2.00	-2.00	0.00	
5,760.0	4.73	226.99	5,563.8	-885.8	-949.5	1,298.5	2.00	-2.00	0.00	
5,800.0	3.93	226.99	5,603.7	-887.9	-951.7	1,301.6	2.00	-2.00	0.00	
5,840.0	3.13	226.99	5,643.6	-889.6	-953.5	1,304.0	2.00	-2.00	0.00	
5,880.0	2.33	226.99	5,683.6	-890.9	-954.9	1,305.9	2.00	-2.00	0.00	
5,920.0	1.53	226.99	5,723.5	-891.8	-955.9	1,307.3	2.00	-2.00	0.00	
5,960.0	0.73	226.99	5,763.5	-892.3	-956.4	1,308.1	2.00	-2.00	0.00	
5,996.5	0.00	0.00	5,800.0	-892.5	-956.6	1,308.3	2.00	-2.00	364.65	
TARGET BHL 2000'FNL, 1980'FEL										
6,000.0	0.00	0.00	5,803.5	-892.5	-956.6	1,308.3	0.00	0.00	0.00	
6,040.0	0.00	0.00	5,843.5	-892.5	-956.6	1,308.3	0.00	0.00	0.00	

Database:	Landmark	Local Co-ordinate Reference:	Well Badding USX W25-07D
Company:	NOBLE ENERGY INC WELD COUNTY CO	TVD Reference:	WELL @ 5038.0ft (Original Well Elev)
Project:	SEC.25-T2N-R66W	MD Reference:	WELL @ 5038.0ft (Original Well Elev)
Site:	Badding USX W25-07D Pad Sec.25-T2N-R66W	North Reference:	True
Well:	Badding USX W25-07D	Survey Calculation Method:	Minimum Curvature
Wellbore:	Wellbore #1		
Design:	Noble Badding USX W25-07D Plan #1 (5-02-1		

Planned Survey									
Measured Depth (ft)	Inclination (°)	Azimuth (°)	Vertical Depth (ft)	+N/-S (ft)	+E/-W (ft)	Vertical Section (ft)	Dogleg Rate (°/100ft)	Build Rate (°/100ft)	Turn Rate (°/100ft)
6,080.0	0.00	0.00	5,883.5	-892.5	-956.6	1,308.3	0.00	0.00	0.00
6,120.0	0.00	0.00	5,923.5	-892.5	-956.6	1,308.3	0.00	0.00	0.00
6,160.0	0.00	0.00	5,963.5	-892.5	-956.6	1,308.3	0.00	0.00	0.00
6,200.0	0.00	0.00	6,003.5	-892.5	-956.6	1,308.3	0.00	0.00	0.00
6,240.0	0.00	0.00	6,043.5	-892.5	-956.6	1,308.3	0.00	0.00	0.00
6,280.0	0.00	0.00	6,083.5	-892.5	-956.6	1,308.3	0.00	0.00	0.00
6,320.0	0.00	0.00	6,123.5	-892.5	-956.6	1,308.3	0.00	0.00	0.00
6,360.0	0.00	0.00	6,163.5	-892.5	-956.6	1,308.3	0.00	0.00	0.00
6,400.0	0.00	0.00	6,203.5	-892.5	-956.6	1,308.3	0.00	0.00	0.00
6,440.0	0.00	0.00	6,243.5	-892.5	-956.6	1,308.3	0.00	0.00	0.00
6,480.0	0.00	0.00	6,283.5	-892.5	-956.6	1,308.3	0.00	0.00	0.00
6,520.0	0.00	0.00	6,323.5	-892.5	-956.6	1,308.3	0.00	0.00	0.00
6,560.0	0.00	0.00	6,363.5	-892.5	-956.6	1,308.3	0.00	0.00	0.00
6,600.0	0.00	0.00	6,403.5	-892.5	-956.6	1,308.3	0.00	0.00	0.00
6,640.0	0.00	0.00	6,443.5	-892.5	-956.6	1,308.3	0.00	0.00	0.00
6,680.0	0.00	0.00	6,483.5	-892.5	-956.6	1,308.3	0.00	0.00	0.00
6,720.0	0.00	0.00	6,523.5	-892.5	-956.6	1,308.3	0.00	0.00	0.00
6,760.0	0.00	0.00	6,563.5	-892.5	-956.6	1,308.3	0.00	0.00	0.00
6,800.0	0.00	0.00	6,603.5	-892.5	-956.6	1,308.3	0.00	0.00	0.00
6,840.0	0.00	0.00	6,643.5	-892.5	-956.6	1,308.3	0.00	0.00	0.00
6,880.0	0.00	0.00	6,683.5	-892.5	-956.6	1,308.3	0.00	0.00	0.00
6,920.0	0.00	0.00	6,723.5	-892.5	-956.6	1,308.3	0.00	0.00	0.00
6,960.0	0.00	0.00	6,763.5	-892.5	-956.6	1,308.3	0.00	0.00	0.00
7,000.0	0.00	0.00	6,803.5	-892.5	-956.6	1,308.3	0.00	0.00	0.00
7,040.0	0.00	0.00	6,843.5	-892.5	-956.6	1,308.3	0.00	0.00	0.00
7,080.0	0.00	0.00	6,883.5	-892.5	-956.6	1,308.3	0.00	0.00	0.00
7,120.0	0.00	0.00	6,923.5	-892.5	-956.6	1,308.3	0.00	0.00	0.00
7,160.0	0.00	0.00	6,963.5	-892.5	-956.6	1,308.3	0.00	0.00	0.00
7,200.0	0.00	0.00	7,003.5	-892.5	-956.6	1,308.3	0.00	0.00	0.00
7,240.0	0.00	0.00	7,043.5	-892.5	-956.6	1,308.3	0.00	0.00	0.00
7,280.0	0.00	0.00	7,083.5	-892.5	-956.6	1,308.3	0.00	0.00	0.00
7,319.5	0.00	0.00	7,123.0	-892.5	-956.6	1,308.3	0.00	0.00	0.00
NIORARA - TARGET CIRCLE 2000'FNL & 1980'FEL - LEGAL BOX 400' X 400' 1990'FNL & 2002'FEL									
7,320.0	0.00	0.00	7,123.5	-892.5	-956.6	1,308.3	0.00	0.00	0.00
7,360.0	0.00	0.00	7,163.5	-892.5	-956.6	1,308.3	0.00	0.00	0.00
7,400.0	0.00	0.00	7,203.5	-892.5	-956.6	1,308.3	0.00	0.00	0.00
7,440.0	0.00	0.00	7,243.5	-892.5	-956.6	1,308.3	0.00	0.00	0.00
7,480.0	0.00	0.00	7,283.5	-892.5	-956.6	1,308.3	0.00	0.00	0.00
7,520.0	0.00	0.00	7,323.5	-892.5	-956.6	1,308.3	0.00	0.00	0.00
7,560.0	0.00	0.00	7,363.5	-892.5	-956.6	1,308.3	0.00	0.00	0.00
7,600.0	0.00	0.00	7,403.5	-892.5	-956.6	1,308.3	0.00	0.00	0.00
7,636.5	0.00	0.00	7,440.0	-892.5	-956.6	1,308.3	0.00	0.00	0.00
CODELL									
7,640.0	0.00	0.00	7,443.5	-892.5	-956.6	1,308.3	0.00	0.00	0.00
7,680.0	0.00	0.00	7,483.5	-892.5	-956.6	1,308.3	0.00	0.00	0.00
7,720.0	0.00	0.00	7,523.5	-892.5	-956.6	1,308.3	0.00	0.00	0.00
7,760.0	0.00	0.00	7,563.5	-892.5	-956.6	1,308.3	0.00	0.00	0.00
7,800.0	0.00	0.00	7,603.5	-892.5	-956.6	1,308.3	0.00	0.00	0.00
7,840.0	0.00	0.00	7,643.5	-892.5	-956.6	1,308.3	0.00	0.00	0.00
7,880.0	0.00	0.00	7,683.5	-892.5	-956.6	1,308.3	0.00	0.00	0.00
7,920.0	0.00	0.00	7,723.5	-892.5	-956.6	1,308.3	0.00	0.00	0.00
7,960.0	0.00	0.00	7,763.5	-892.5	-956.6	1,308.3	0.00	0.00	0.00
8,000.0	0.00	0.00	7,803.5	-892.5	-956.6	1,308.3	0.00	0.00	0.00

Database:	Landmark	Local Co-ordinate Reference:	Well Badding USX W25-07D
Company:	NOBLE ENERGY INC WELD COUNTY CO	TVD Reference:	WELL @ 5038.0ft (Original Well Elev)
Project:	SEC.25-T2N-R66W	MD Reference:	WELL @ 5038.0ft (Original Well Elev)
Site:	Badding USX W25-07D Pad Sec.25-T2N-R66W	North Reference:	True
Well:	Badding USX W25-07D	Survey Calculation Method:	Minimum Curvature
Wellbore:	Wellbore #1		
Design:	Noble Badding USX W25-07D Plan #1 (5-02-1		

Planned Survey

Measured Depth (ft)	Inclination (°)	Azimuth (°)	Vertical Depth (ft)	+N/-S (ft)	+E/-W (ft)	Vertical Section (ft)	Dogleg Rate (°/100ft)	Build Rate (°/100ft)	Turn Rate (°/100ft)
8,023.5	0.00	0.00	7,827.0	-892.5	-956.6	1,308.3	0.00	0.00	0.00
D-SAND									
8,040.0	0.00	0.00	7,843.5	-892.5	-956.6	1,308.3	0.00	0.00	0.00
8,080.0	0.00	0.00	7,883.5	-892.5	-956.6	1,308.3	0.00	0.00	0.00
8,092.5	0.00	0.00	7,896.0	-892.5	-956.6	1,308.3	0.00	0.00	0.00
J-SAND									
8,120.0	0.00	0.00	7,923.5	-892.5	-956.6	1,308.3	0.00	0.00	0.00
8,160.0	0.00	0.00	7,963.5	-892.5	-956.6	1,308.3	0.00	0.00	0.00
8,200.0	0.00	0.00	8,003.5	-892.5	-956.6	1,308.3	0.00	0.00	0.00
8,240.0	0.00	0.00	8,043.5	-892.5	-956.6	1,308.3	0.00	0.00	0.00
8,242.5	0.00	0.00	8,046.0	-892.5	-956.6	1,308.3	0.00	0.00	0.00

Targets

Target Name	Dip Angle (°)	Dip Dir. (°)	TVD (ft)	+N/-S (ft)	+E/-W (ft)	Northing (ft)	Easting (ft)	Latitude	Longitude
- hit/miss target									
- Shape									
TARGET BHL 2000'F	0.00	0.00	5,800.0	-892.5	-956.6	1,284,259.28	3,217,341.61	40.111070	-104.722930
- plan hits target center									
- Point									
TARGET CIRCLE 20'	0.00	0.00	7,123.0	-892.5	-956.6	1,284,259.28	3,217,341.61	40.111070	-104.722930
- plan hits target center									
- Circle (radius 75.0)									
LEGAL BOX 400' X 40'	0.00	0.00	7,123.0	-882.5	-978.6	1,284,269.08	3,217,319.53	40.111097	-104.723009
- plan misses target center by 24.2ft at 7319.5ft MD (7123.0 TVD, -892.5 N, -956.6 E)									
- Rectangle (sides W400.0 H400.0 D923.0)									

Casing Points

Measured Depth (ft)	Vertical Depth (ft)	Name	Casing Diameter (")	Hole Diameter (")
850.0	850.0	8 5/8"	8-5/8	12-1/4

Formations

Measured Depth (ft)	Vertical Depth (ft)	Name	Lithology	Dip (°)	Dip Direction (°)
7,319.5	7,123.0	NIOBRARA		0.00	
7,636.5	7,440.0	CODELL		0.00	
8,023.5	7,827.0	D-SAND		0.00	
8,092.5	7,896.0	J-SAND		0.00	