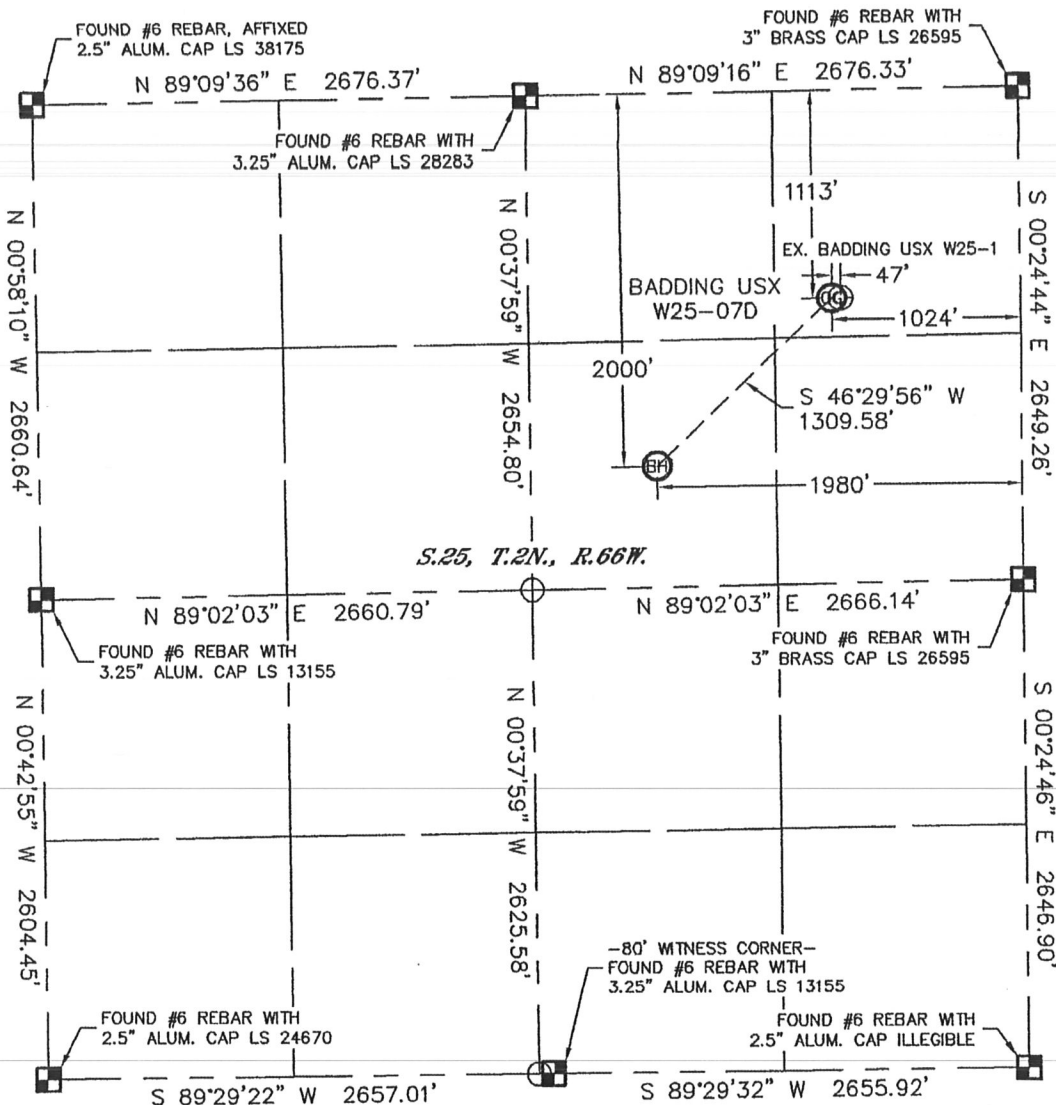


# WELL LOCATION CERTIFICATE

THIS MAP DOES NOT REPRESENT A BOUNDARY SURVEY

SECTION: 25  
TOWNSHIP: 2N  
RANGE: 66W



In accordance with a request from Mike Rodine with Noble Energy Inc., Lat40°, Inc. has determined the surface location of the BADDING USX W25-07D to be 1113' from the NORTH line and 1024' from the EAST line and the bottom hole to be 2000' from the NORTH line and 1980' from the EAST line as measured at right angles from the section lines of Section 25, Township 2 North, Range 66 West of the Sixth Principal Meridian, County of Weld, State of Colorado.

I hereby state that this Well Location Certificate was prepared by me, or under my direct supervision, that the fieldwork was completed on 4/6/11, for and on behalf of Noble Energy Inc. That this is not a Land Survey Plat or an Improvement Survey Plat, and that it is not to be relied upon for establishment of fence, building, or other future improvement lines.

## NOTE:

- 1) Bearings shown are Grid Bearings of the Colorado State Plane Coordinate System, North Zone, North American Datum 1983/2007. The lineal dimensions as contained herein are based upon the "U.S. Survey Foot."
- 2) Ground elevations are based on an observed GPS elevation (NAVD 1988 DATUM).
- 3) NEAREST EXISTING WELL: BADDING USX W25-1, 47'
- 4) IMPROVEMENTS: See LOCATION DRAWING for all visible improvements within 400' of disturbed area.
- 5) SURFACE USE: CROP FIELD
- 6) INSTRUMENT OPERATOR: ADAM KELLY

SURFACE LOCATION  
LATITUDE: 40.11352N  
LONGITUDE: 104.71951W  
PDOP: 2.7  
ELEV: 5025'  
1/4, 1/4: NE1/4NE1/4  
NEAREST PROPERTY LINE: 213' SOUTH

BOTTOM HOLE  
LATITUDE: 40.11107N  
LONGITUDE: 104.72293W

## NOTE

According to Colorado law, you must commence any legal action based upon any defect in this W.L.C. within three years after you discover such defect. In no event, may any action based upon any defect in this survey be commenced more than ten years after the date of the certificate shown hereon. (13-80-105 C.R.S.)

## LEGEND

- = ALIQUOT MONUMENT AS DESCRIBED
- = CALCULATED POSITION

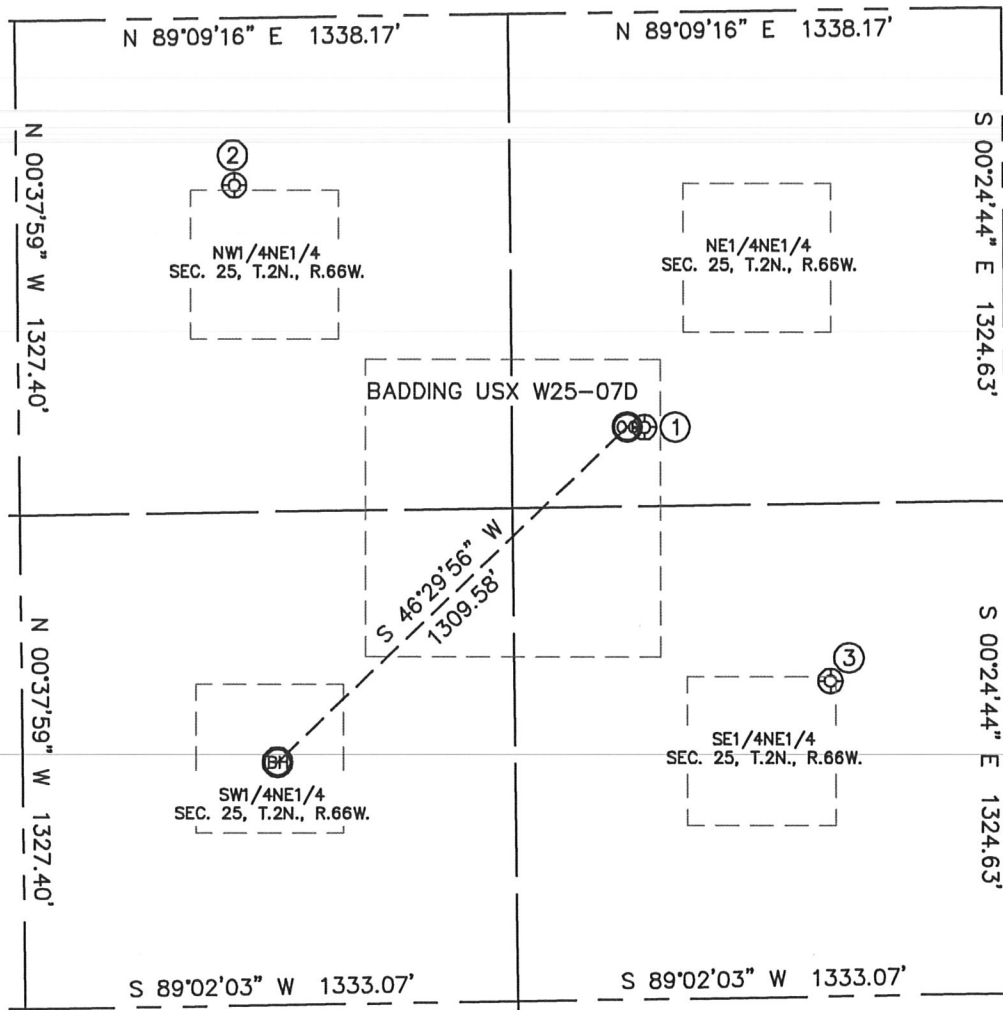


Brian T. Brinkman—On behalf of Lat40°, Inc.  
Colorado Licensed Professional  
Land Surveyor No. 38175 PROJECT#: 2011084

# SITE SKETCH

BADDING USX W25-07D

SECTION: 25  
TOWNSHIP: 2N  
RANGE: 66W



①

BADDING USX W25-1  
NE1/4NE1/4  
1113' FNL  
977' FEL  
LAT-40.11352N  
LONG-104.71934W  
PDOP: 1.1  
ELEV: 5026'

②

BADDING 31-25  
NW1/4NE1/4  
449' FNL  
2085' FEL  
LAT-40.11532N  
LONG-104.72330W  
PDOP: 1.9  
ELEV: 5058'

③

PARAGON FARMS 42-25  
SE1/4NE1/4  
1802' FNL  
479' FEL  
LAT-40.11163N  
LONG-104.71757W  
PDOP: 2.2  
ELEV: 5008'

