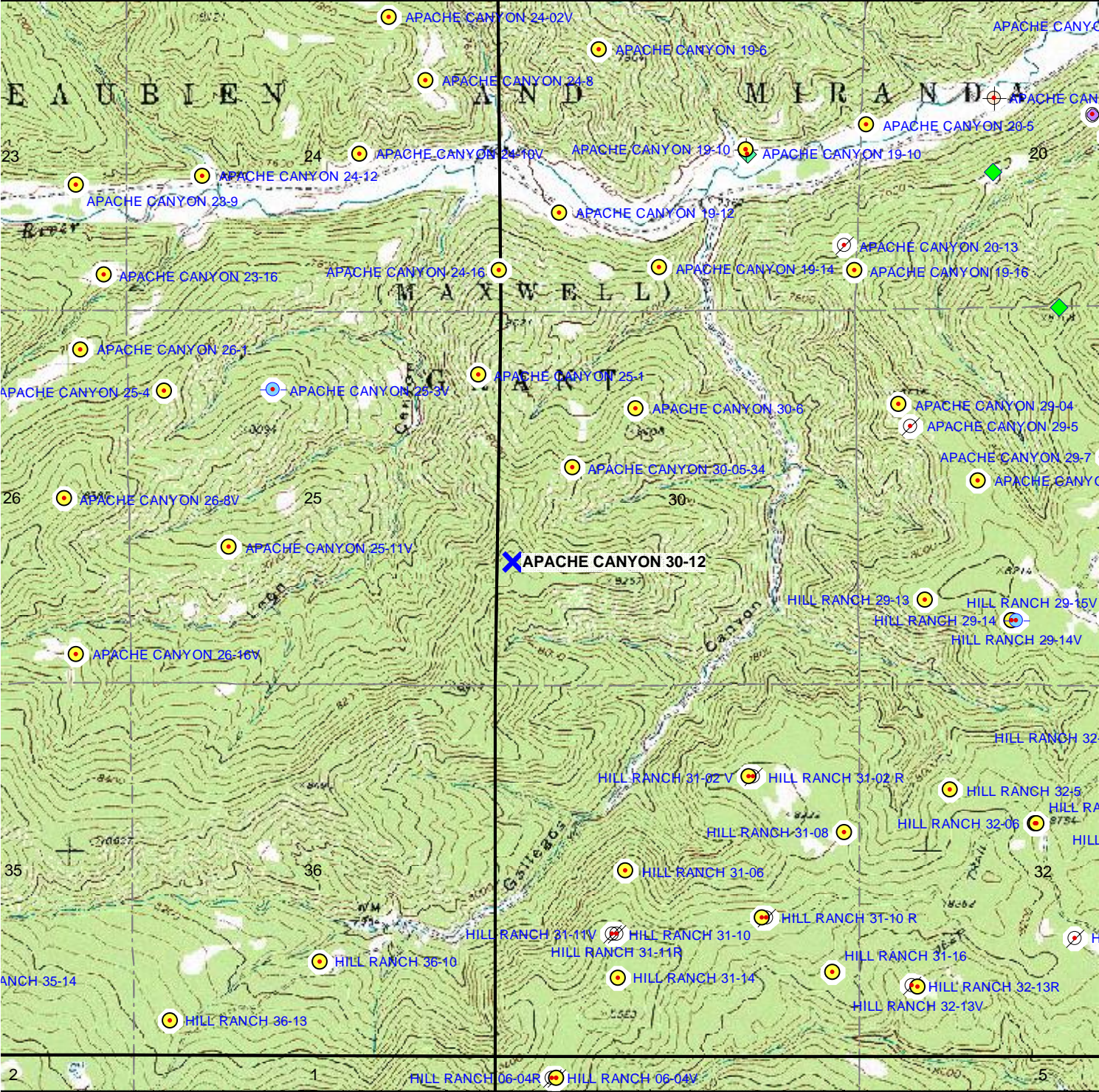


TOPOGRAPHIC MAP



X

Proposed Well

●

Producing

⊕

Plugged & Abandoned

⊗

Abandoned Location

⊖

Shut-In

◆

Pending Permits

●

Permits

APACHE CANYON 30-12

1,746' FSL & 164' FWL

SEC. 30, T34S, R67W, 6th P.M.

LAS ANIMAS COUNTY, CO

↑

N

Scale 1" = 2,000'