



Construction Drawings

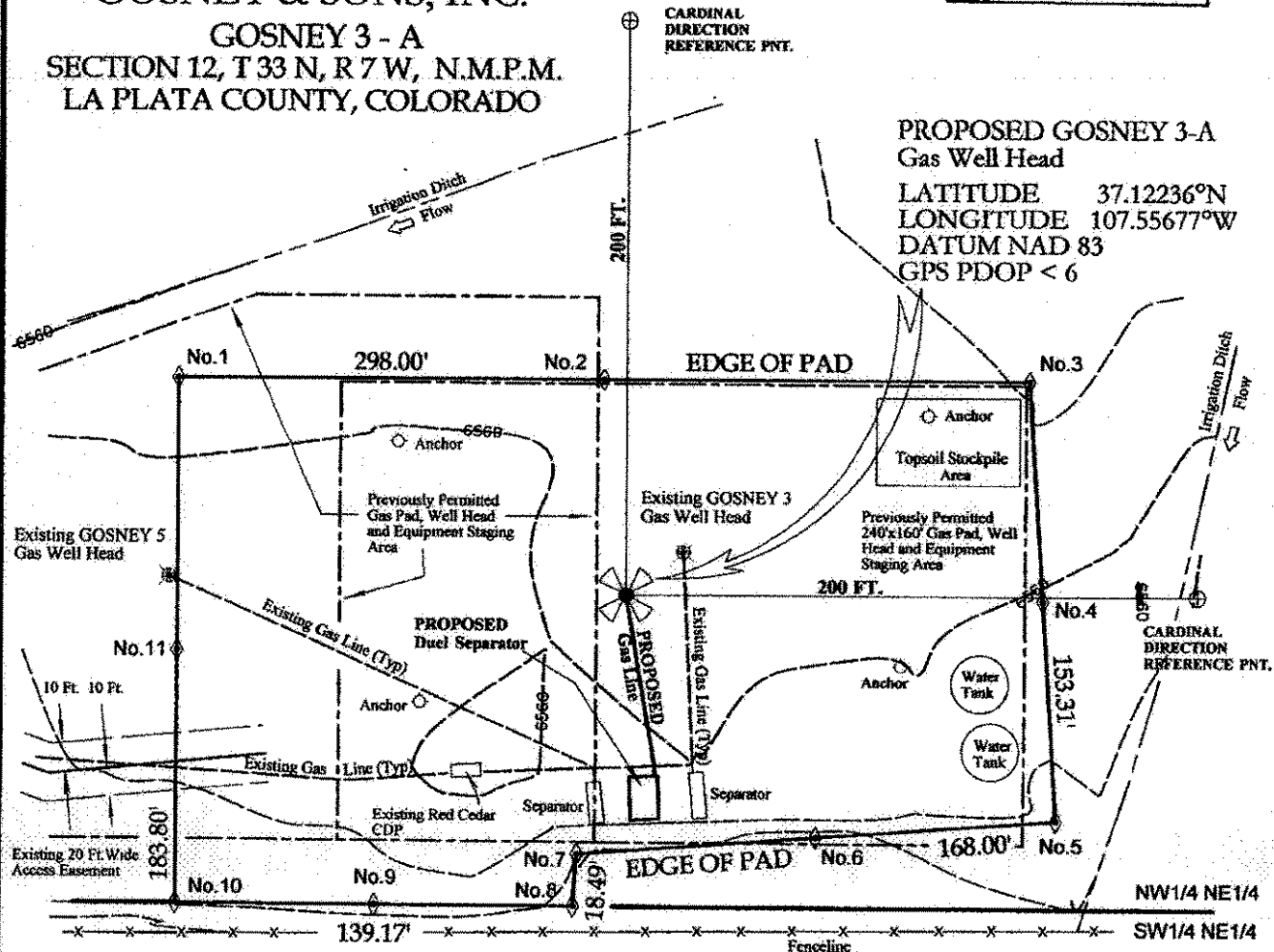
RECEIVED

MAY 10 2011

COGCC

GOSNEY & SONS, INC.

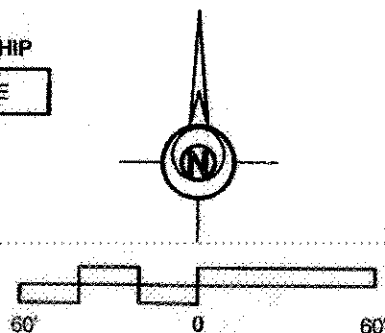
GOSNEY 3 - A
SECTION 12, T 33 N, R 7 W, N.M.P.M.
LA PLATA COUNTY, COLORADO



CURRENT SURROUNDING SURFACE USE
NORTH - Pasture/Grazing
WEST - Pasture/Grazing
SOUTH - Pasture/Grazing
EAST - Pasture/Grazing

CURRENT SURFACE OWNERSHIP
SOUTHERN UTE INDIAN TRIBE

BEARINGS ARE ASSUMED BASED ON THE FOUND
MONUMENTS AT THE CN 1/16 CORNER
AND AT THE NE 1/16 CORNER OF SECTION 12,
T 33 N, R 7 W, NMPM, SAID CORNERS BEING
2 1/2" PIPES WITH A 3 1/4" ALUM. CAP - S.U.I.R.
REFERENCE BEARING = N 89° 58' 00" W 1321.22'



SCALE: 1" = 60'
CONTOUR INTERVAL = 1 FT.
DISTANCES SHOWN ARE IN U.S. SURVEY
FEET MEASURED AT GROUND

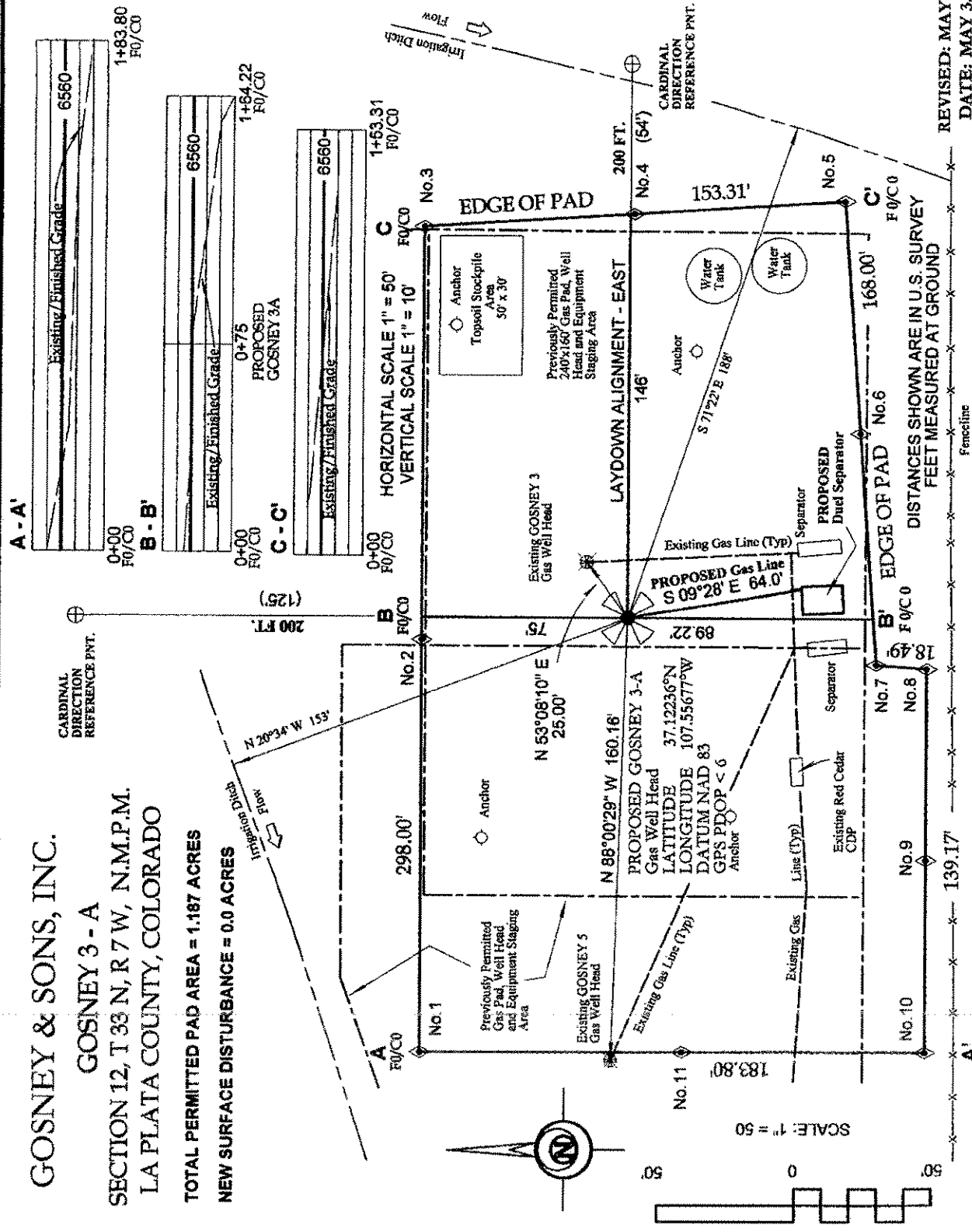
REVISED: MAY 1, 2011
DATE: MAY 3, 2010
DRAWN BY: SCM

SHEET 2 OF 7

TWISTED CREEK, LLC 3011 HILLSIDE AVENUE DURANGO, CO 81301 (970) 749-0500

GOSNEY & SONS, INC.

GOSNEY 3 - A
SECTION 12, T 33 N, R 7 W, N.M.P.M.
LA PLATA COUNTY, COLORADO
TOTAL PERMITTED PAD AREA = 1.187 ACRES
NEW SURFACE DISTURBANCE = 0.0 ACRES



REVISED: MAY 1, 2011
DATE: MAY 3, 2010
DRAWN BY: SCM

TWISTED CREEK, LLC 3011 HILLSIDE AVENUE DURANGO, CO 81301 (970) 749-0500

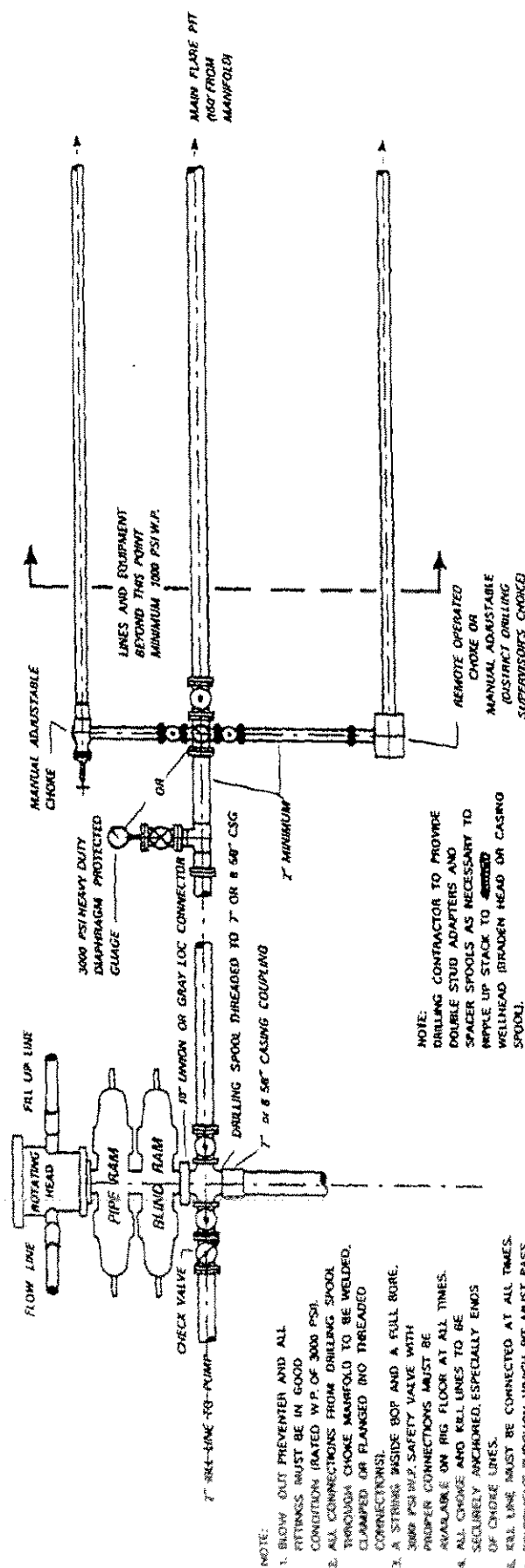
SHEET 3 OF 7

RECEIVED
MAY 10 2011
COGCC

TWISTED CREEK, LLC 3011 HILLSIDE AVENUE DURANGO, CO 81301 (970) 749-0500

MINIMUM BLOW-OUT PREVENTER REQUIREMENTS 7/8" OR 1" (NOMINAL) 3,000 PSI W.P.

Typical Fruitland Coal/Mud Drill



NOTE:
1. CHOKE ASSEMBLY VERTICAL FOR ILLUSTRATION ONLY. SHOULD BE HORIZONTAL ON RIG. ANCHOR ALL LINES SECURELY EVERY 30' AND WITHIN 5' OF END OF LINE.
2. DRILLING CONTRACTOR TO BE RESPONSIBLE FOR PROVIDING ALL LINES AND VALVES.

NOTE:
DRILLING CONTRACTOR TO PROVIDE DOUBLE STUD ADAPTERS AND SPACER SPOOLS AS NECESSARY TO WPILE UP STACK TO ~~GROUND~~ WELLHEAD (BRADEN HEAD OR CASINO SPOOL).

NOTE:
1. ALL UNMARKED VALVES TO BE FULL-OPENING GATE OR PLUS VALVES, METAL TO METAL SEAL 3000 PSI W.P.

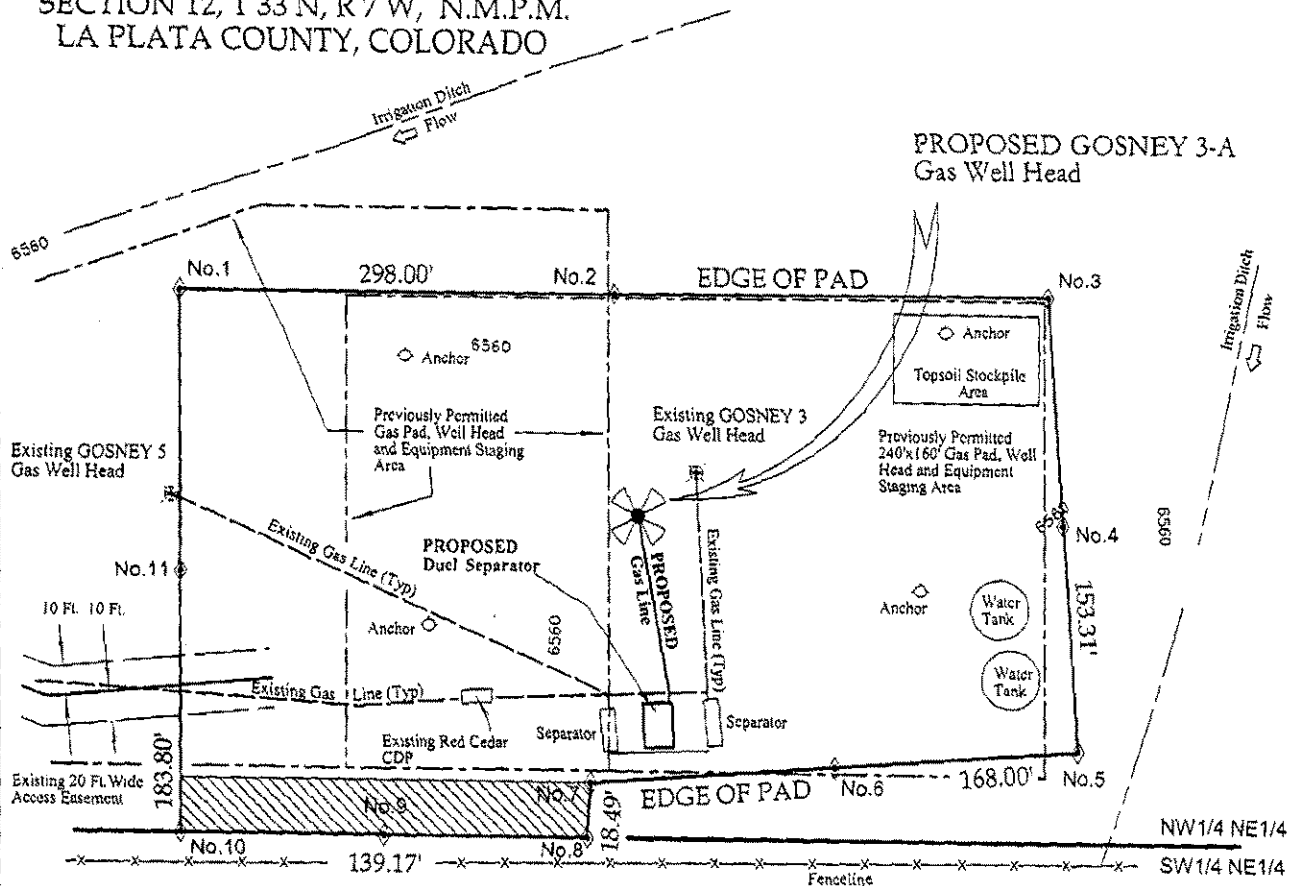
- NOTE:
1. BLOW OUT PREVENTER AND ALL FITTINGS MUST BE IN GOOD CONDITION (RATED W.P. OF 3000 PSI).
 2. ALL CONNECTIONS FROM DRILLING SPOOL THROUGH CHOKE MANIFOLD TO BE WELDED, CLAMPED OR FLANGED (NO THREADED CONNECTIONS).
 3. A STRING INSIDE BOP AND A FULL BORE 3000 PSI BOP SAFETY VALVE WITH PROPER CONNECTIONS MUST BE AVAILABLE ON RIG FLOOR AT ALL TIMES.
 4. ALL CHOKE AND KILL LINES TO BE SECURELY ANCHORED, ESPECIALLY ENDS OF CHOKE LINES.
 5. KILL LINE MUST BE CONNECTED AT ALL TIMES.
 6. EQUIPMENT THROUGH WHICH BOP MUST PASS SHALL BE AS LARGE AS INSIDE DIAMETER OF THE CASING BEING DRILLED THROUGH.
 7. MUST HAVE UPPER AND LOWER KELLY COCK ON KELLY.
 8. BLOW-OUT PREVENTER CLOSING EQUIPMENT SHALL HAVE SUFFICIENT CAPACITY TO FULLY REQUIREMENTS OF CURRENT FEDERAL REGISTAR (43 CFR DATED NOV 1988).
 9. NO COLLECTOR BOTTLES, SURGE TANKS OR BUFFER CHAMBERS DOWNSTREAM OF THE CHOKE MANIFOLD.
 10. ALL TURNS TO BE MADE WITH TARGETED TEES (16-24\"/>

RECEIVED

MAY 10 2011

COGCC

GOSNEY & SONS, INC.
GOSNEY 3 - A
INTERIM RECLAMATION PLAT
SECTION 12, T 33 N, R 7 W, N.M.P.M.
LA PLATA COUNTY, COLORADO



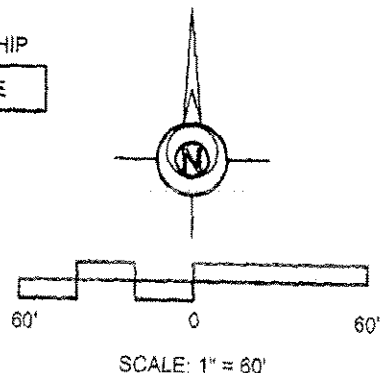
CURRENT SURROUNDING SURFACE USE
NORTH - Pasture/Grazing
WEST - Pasture/Grazing
SOUTH - Pasture/Grazing
EAST - Pasture/Grazing

CURRENT SURFACE OWNERSHIP
SOUTHERN UTE INDIAN TRIBE

BEARINGS ARE ASSUMED BASED ON THE FOUND
MONUMENTS AT THE CN 1/16 CORNER
AND AT THE NE 1/16 CORNER OF SECTION 12,
T 33 N, R 7 W, NMFM, SAID CORNERS BEING
2 1/2" PIPES WITH A 3 1/4" ALUM. CAP - S.U.I.R
REFERENCE BEARING = N 89° 58' 00" W 1321.22'

AREA TO BE RECLAIMED
± 2575 SQ. FT.

AREA OF WELL PAD AFTER INTERIM
RECLAMATION ± 1.13 ACRES



DISTANCES SHOWN ARE IN U.S. SURVEY
FEET MEASURED AT GROUND

DATE: MAY 1, 2011

DRAWN BY: SCM

SHEET 1 OF 1

TWISTED CREEK, LLC 3011 HILLSIDE AVENUE DURANGO, CO 81301 (970) 749-0500