
NOBLE ENERGY INC E-BUSINESS

**BM 35-23B
GRAND VALLEY
Garfield County , Colorado**

Cement Surface Casing
13-Dec-2010

Post Job Report

The Road to Excellence Starts with Safety

Sold To #: 345242	Ship To #: 2802605	Quote #:	Sales Order #: 7785364
Customer: NOBLE ENERGY INC E-BUSINESS	Customer Rep: WILKERSON, KENNY		
Well Name: BM	Well #: 35-23B	API/UWI #:	
Field: GRAND VALLEY	City (SAP): RIFLE	County/Parish: Garfield	State: Colorado
Lat: N 39.392 deg. OR N 39 deg. 23 min. 32.932 secs.	Long: W 107.972 deg. OR W -108 deg. 1 min. 40.67 secs.		
Contractor: H&P Drilling	Rig/Platform Name/Num: H&P 322		
Job Purpose: Cement Surface Casing			
Well Type: Development Well	Job Type: Cement Surface Casing		
Sales Person: METLI, MARSHALL	Srvc Supervisor: CALDWELL, JEFFREY	MBU ID Emp #: 369111	

Job Personnel

HES Emp Name	Exp Hrs	Emp #	HES Emp Name	Exp Hrs	Emp #	HES Emp Name	Exp Hrs	Emp #
BLANCHETTE, JAMES George	7	371360	BLUST, CHARLES Thomas	5	386662	BRUN, JUSTIN M	10	459269
CALDWELL, JEFFREY S	10	369111	HAYES, JESSE Doug	10	403601	JENSEN, SHANE Lynn	3	441759
KUKUS, CRAIG A	3	369124	YOUNG, JEREMY R	10	418013			

Equipment

HES Unit #	Distance-1 way	HES Unit #	Distance-1 way	HES Unit #	Distance-1 way	HES Unit #	Distance-1 way
10053558	60 mile	10567589L H	60 mile	10592964	60 mile	10744549	60 mile
10822535	60 mile	10938677	60 mile	10938678	60 mile	10951249	60 mile
10973565	60 mile	10988964	60 mile	10995027	60 mile	11164589	60 mile
11381461	60 mile						

Job Hours

Date	On Location Hours	Operating Hours	Date	On Location Hours	Operating Hours	Date	On Location Hours	Operating Hours
12-13-10	10	4						

TOTAL Total is the sum of each column separately

Job				Job Times			
Formation Name				Date	Time	Time Zone	
Formation Depth (MD)	Top	Bottom		Called Out	13 - Dec - 2010	07:30	MST
Form Type		BHST		On Location	13 - Dec - 2010	13:00	MST
Job depth MD	3358. ft	Job Depth TVD	3358. ft	Job Started	13 - Dec - 2010	17:12	MST
Water Depth		Wk Ht Above Floor	-15. ft	Job Completed	13 - Dec - 2010	20:40	MST
Perforation Depth (MD)	From	To		Departed Loc	13 - Dec - 2010	23:00	MST

Well Data

Description	New / Used	Max pressure psig	Size in	ID in	Weight lbm/ft	Thread	Grade	Top MD ft	Bottom MD ft	Top TVD ft	Bottom TVD ft
-------------	------------	-------------------	---------	-------	---------------	--------	-------	-----------	--------------	------------	---------------

Sales/Rental/3rd Party (HES)

Description	Qty	Qty uom	Depth	Supplier
PLUG,CMTG,TOP,9 5/8,HWE,8.16 MIN/9.06 MA	1	EA		
ADC (AUTO DENSITY CTRL) SYS, /JOB,ZI	1	JOB		
PORT. DAS W/CEMWIN;ACQUIRE W/HES, ZI	1	JOB		
R/A DENSOMETER W/CHART RECORDER,/JOB,ZI	1	JOB		

Tools and Accessories

Type	Size	Qty	Make	Depth	Type	Size	Qty	Make	Depth	Type	Size	Qty	Make
Guide Shoe					Packer					Top Plug	9.625	1	
Float Shoe					Bridge Plug					Bottom Plug			
Float Collar					Retainer					SSR plug set			
Insert Float										Plug Container			
Stage Tool										Centralizers			

Miscellaneous Materials													
Gelling Agt		Conc		Surfactant		Conc		Acid Type		Qty		Conc	%
Treatment Fld		Conc		Inhibitor		Conc		Sand Type		Size		Qty	
Fluid Data													
Stage/Plug #: 1													
Fluid #	Stage Type	Fluid Name			Qty	Qty uom	Mixing Density lbm/gal	Yield ft3/sk	Mix Fluid Gal/sk	Rate bbl/min	Total Mix Fluid Gal/sk		
1	Water Spacer				10	bbl	.	.0	.0	5.0			
2	SUPER FLUSH 101	SUPER FLUSH 101 - SBM (12199)			20	bbl	10.	.0	.0	5.0			
3	Water Spacer				10	bbl	8.33	.0	.0	5.0			
4	Lead Cement	VERSACEM (TM) SYSTEM (452010)			886	sacks	12.3	2.3	11.68	4.0	11.68		
		11.68 Gal			FRESH WATER								
5	Tail Cement	VERSACEM (TM) SYSTEM (452010)			183	sacks	12.6	2.14	10.47	4.0	10.47		
		10.47 Gal			FRESH WATER								
6	Displacement				250.4	bbl	8.33	.0	.0	5.0			
Calculated Values		Pressures			Volumes								
Displacement	250.4	Shut In: Instant			Lost Returns			Cement Slurry		432.6	Pad		
Top Of Cement	SURFACE	5 Min			Cement Returns		40	Actual Displacement		250.4	Treatment		
Frac Gradient		15 Min			Spacers		40	Load and Breakdown			Total Job	763	
Rates													
Circulating	6	Mixing		4	Displacement		5	Avg. Job		5			
Cement Left In Pipe		Amount	45.57 ft	Reason	Shoe Joint								
Frac Ring # 1 @	ID	Frac ring # 2 @	ID	Frac Ring # 3 @	ID	Frac Ring # 4 @	ID						
The Information Stated Herein Is Correct					Customer Representative Signature								

The Road to Excellence Starts with Safety

Sold To #: 345242	Ship To #: 2802605	Quote #:	Sales Order #: 7785364
Customer: NOBLE ENERGY INC E-BUSINESS		Customer Rep: WILKERSON, KENNY	
Well Name: BM	Well #: 35-23B	API/UWI #:	
Field: GRAND VALLEY	City (SAP): RIFLE	County/Parish: Garfield	State: Colorado
Legal Description:			
Lat: N 39.392 deg. OR N 39 deg. 23 min. 32.932 secs.		Long: W 107.972 deg. OR W -108 deg. 1 min. 40.67 secs.	
Contractor: H&P Drilling		Rig/Platform Name/Num: H&P 322	
Job Purpose: Cement Surface Casing			Ticket Amount:
Well Type: Development Well		Job Type: Cement Surface Casing	
Sales Person: METLI, MARSHALL		Srv Supervisor: CALDWELL, JEFFREY	
MBU ID Emp #: 369111			

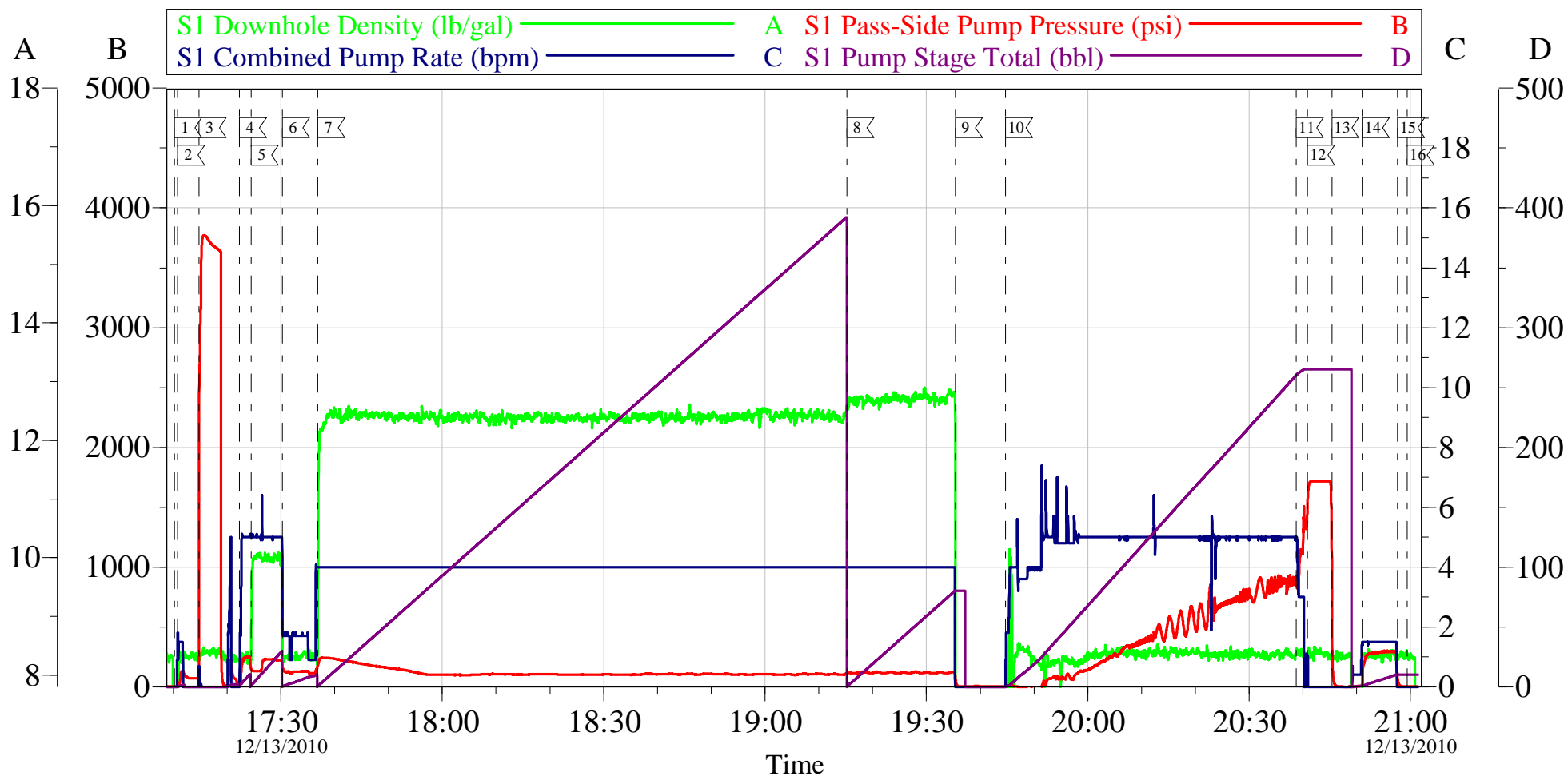
Activity Description	Date/Time	Cht #	Rate bbl/min	Volume bbl		Pressure psig		Comments
				Stage	Total	Tubing	Casing	
Call Out	12/13/2010 07:30							ELITE #3, 1-660 BULK CEMENT TRUCK, 1-1410 BULK CEMENT BIN, 1-TRANSPORT, 1-F450
Pre-Convoy Safety Meeting	12/13/2010 09:30							ALL PERSONNEL ASSOCIATED WITH JOB ATTENDED.
Crew Leave Yard	12/13/2010 10:00							
Arrive At Loc	12/13/2010 13:00							CASING WAS STILL BEING RUN.
Safety Meeting	12/13/2010 15:15							ALL PERSONNEL ASSOCIATED WITH JOB ATTENDED.
Rig-Up Equipment	12/13/2010 15:25							
Pre-Job Safety Meeting	12/13/2010 16:30							ALL PERSONNEL ASSOCIATED WITH JOB ATTENDED.
Start Job	12/13/2010 17:12							TD:3358', TP:3348.65', SJ:45.57', MUD:9.6 PPG, 14 3/4" OH., PUMPING CEMENT JOB OFFLINE
Prime Pumps	12/13/2010 17:12		1.5	2			138.0	H2O
Test Lines	12/13/2010 17:15						3771.0	TEST GOOD
Pump Spacer 1	12/13/2010 17:20		5	10			250.0	H2O, RETURNS 5 BBLs INTO SPACER

Activity Description	Date/Time	Cht #	Rate bbl/min	Volume bbl		Pressure psig		Comments
				Stage	Total	Tubing	Casing	
Pump Spacer 2	12/13/2010 17:24		5	20			230.0	SUPERFLUSH, RETURNS IN AND OUT AT THE BEGINNING BUT AT THE END OF SUPERFLUSH WE HAD GOOD RETURNS, RELEASED TRANSPORT AT 17:30
Pump Spacer 1	12/13/2010 17:30		1.7	10			140.0	H2O, GOOD RETURNS THROUGHOUT SPACER
Pump Lead Cement	12/13/2010 17:37		4	362.9			238.0	886 SKS 12.3 PPG 2.3 CUFT/SAK 11.68 GAL/SAK, GOOD RETURNS THROUGHOUT LEAD CEMENT
Pump Tail Cement	12/13/2010 19:15		4	69.7			130.0	183 SKS 12.6 PPG 2.14 CUFT/SAK 10.47 GAL/SAK
Shutdown	12/13/2010 19:35							
Drop Top Plug	12/13/2010 19:44							PLUG AWAY
Pump Displacement	12/13/2010 19:44		5	250.4			913.0	H2O
Slow Rate	12/13/2010 20:38		3	244			1073.0	
Bump Plug	12/13/2010 20:40		3	250.4			1700.0	PLUG BUMPED.
Check Floats	12/13/2010 20:45							FLOATS HELD, 1 1/2 BBLS BACK. GOOD CIRCULATION THROUGH OUT JOB.
Other	12/13/2010 20:51		1.5	10			295.0	PUMP 10 BBLS OF SUGAR WATER DOWN PARACITE STRING.
End Job	12/13/2010 20:59							40 BBLS OF CEMENT TO SURFACE.
Post-Job Safety Meeting (Pre Rig-Down)	12/13/2010 21:02							ALL PERSONNEL ASSOCIATED WITH JOB ATTENDED.
Rig-Down Equipment	12/13/2010 22:10							

Activity Description	Date/Time	Cht #	Rate bbl/ min	Volume bbl		Pressure psig		Comments
				Stage	Total	Tubing	Casing	
Crew Leave Location	12/13/2010 23:00							THANK YOU FOR CHOOSING HALLIBURTON, JEFF CALDWELL AND CREW.

NOBLE

BM 35-23B Surface



Local Event Log

1 START JOB	17:10:12	2 FILL LINES	17:10:48	3 TEST LINES	17:14:49
4 PUMP H2O SPACER	17:22:16	5 PUMP SUPERFLUSH	17:24:31	6 PUMP H2O SPACER	17:30:17
7 PUMP LEAD CEMENT	17:36:51	8 PUMP TAIL CEMENT	19:15:11	9 SHUTDOWN	19:35:22
10 DROP PLUG/DIPLACE H2O	19:44:43	11 SLOW RATE	20:38:47	12 BUMP PLUG	20:40:53
13 CHECK FLOAT	20:45:22	14 PUMP DOWN PARASITE	20:51:02	15 SHUTDOWN	20:57:35
16 END JOB	20:59:23				

Customer: NOBLE
Well Description: BM-35-23B
Company Rep: LANCE PORTER

Job Date: 13-Dec-2010
Job Type: 9 5/8 SURFACE
Cement Supervisor: JEFF CALDWELL

Sales Order #: 7785364
ADC Used: YES
Elite #: #3/JEREMY YOUNG

OptiCem v6.4.2
13-Dec-10 21:22