

OPERATOR: **WIEPKING - FULLERTON ENERGY LLC**  
WELL NAME: **KERRY 4**

TEST NO: **1**  
TICKET NO: **2847**

Contractor: Murfin Drilling  
Rig No.: 25  
Spot: NE/SW  
Sec: 20  
Twp: 10 S  
Rng: 55 W  
Field: Great Plains  
County: Lincoln  
State: Colorado  
Elevation: 5185' GL  
Formation: Marmaton "Torch" Zone

Surface Choke: 1"  
Bottom Choke: 5/8"  
Hole Size: 7 7/8"  
Core Hole Size:  
DP Size & Wt: 4 1/2" 16.60  
Wt Pipe:  
ID of DC: 2 1/4"  
Length of DC: 543'  
Total Depth: 6940'  
Type of Test: Open Hole Dst  
Interval: 6905' - 6940'

Mud Type: Chemical/Gel  
Weight: 8.9  
Viscosity: 73  
Water Loss: 8.8  
Filter Cake:  
RW: @ Deg F  
Chlorides: Ppm  
Co. Rep.: Gregg Smith  
Tester: Mark Green

**Pipe Recovery:**

10' Mud

**Properties:**

**Surface blow:**

Pre-Flow: Began with a 1/4" blow, decreased and died at 11 minutes and remained thru flow period.

Final Flow: Began with a weak surface blow, died at 4 minutes and remained thru flow period.

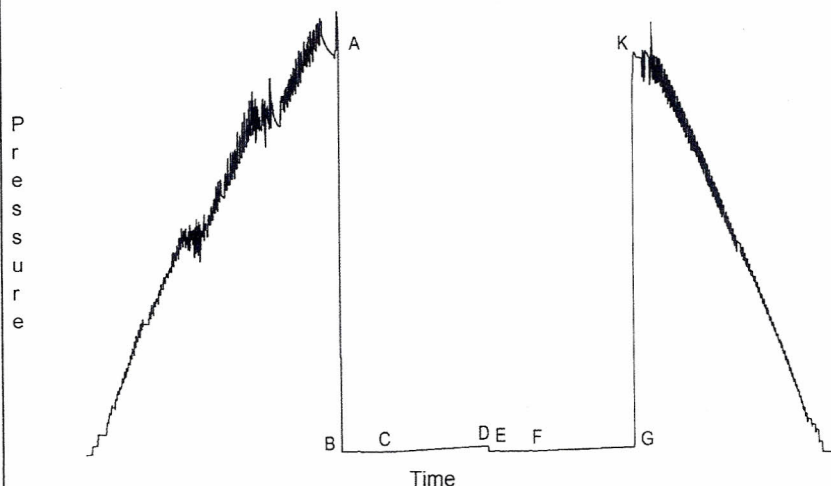
**Downhole Sampler:**

Pressure in Sampler: 25 psig  
Volume of Sampler: 2050 cc  
Volume of Sample: 1100 cc  
Oil: 0 cc  
Water: 0 cc  
Mud: 1100 cc  
Gas: 0 cu ft  
Other: 0  
Rw: 1.5 @ 72 deg F/3,900 ppm  
Chlorides:  
Gas/Oil Ratio  
Gravity: API @ 60 Deg F

Opened Tool @ 05:35 hrs on 03/31/2011

	Reported	Corrected	
Flow 1	30	30	min
Shut-in 1	60	59	min
Flow 2	30	30	min
Shut-in 2	60	56	min

Downhole Pressure Chart



**Downhole Pressure Data**

Recorder Type: JMCO Memory Recorder  
No.: 30024 Cap: 10000 psi  
Depth: 6884 ft.  
Inside: X Outside:  
Psi(a) Deg (f)  
Initial Hydrostatic [A]: 3232  
Final Hydrostatic [K]: 3167  
Initial Flow 1 [B]: 29 158  
Final Flow 1 [C]: 30 160  
Initial Flow 2 [E]: 29 162  
Final Flow 2 [F]: 32 163  
Shut-in 1 [D]: 74 162  
Shut-in 2 [G]: 59 165  
Maximum Temperature: 165

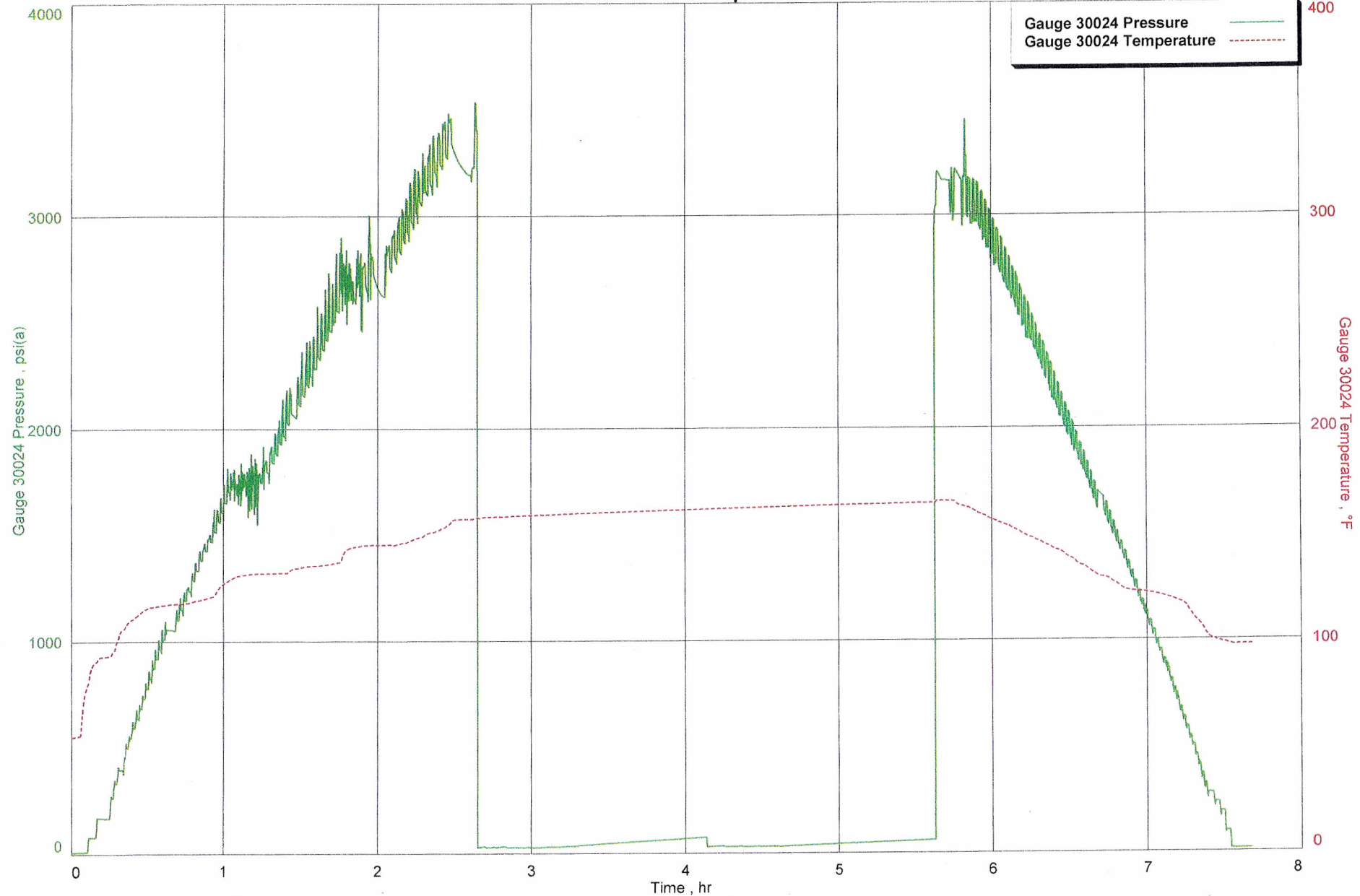
OPERATOR: **WIEPKING - FULLERTON ENERGY LLC**  
WELL NAME: **KERRY 4**  
FORMATION: **MARMATON "TORCH"**  
INTERVAL: **6905' - 6940'**  
TEST NO: **1**  
DATE: **03/31/2011**



Wiepking - Fullerton Energy LLC  
Interval: 6905'- 6940'

Formation: Marmaton "Torch" Zone

Downhole Pressure/Temperature Chart

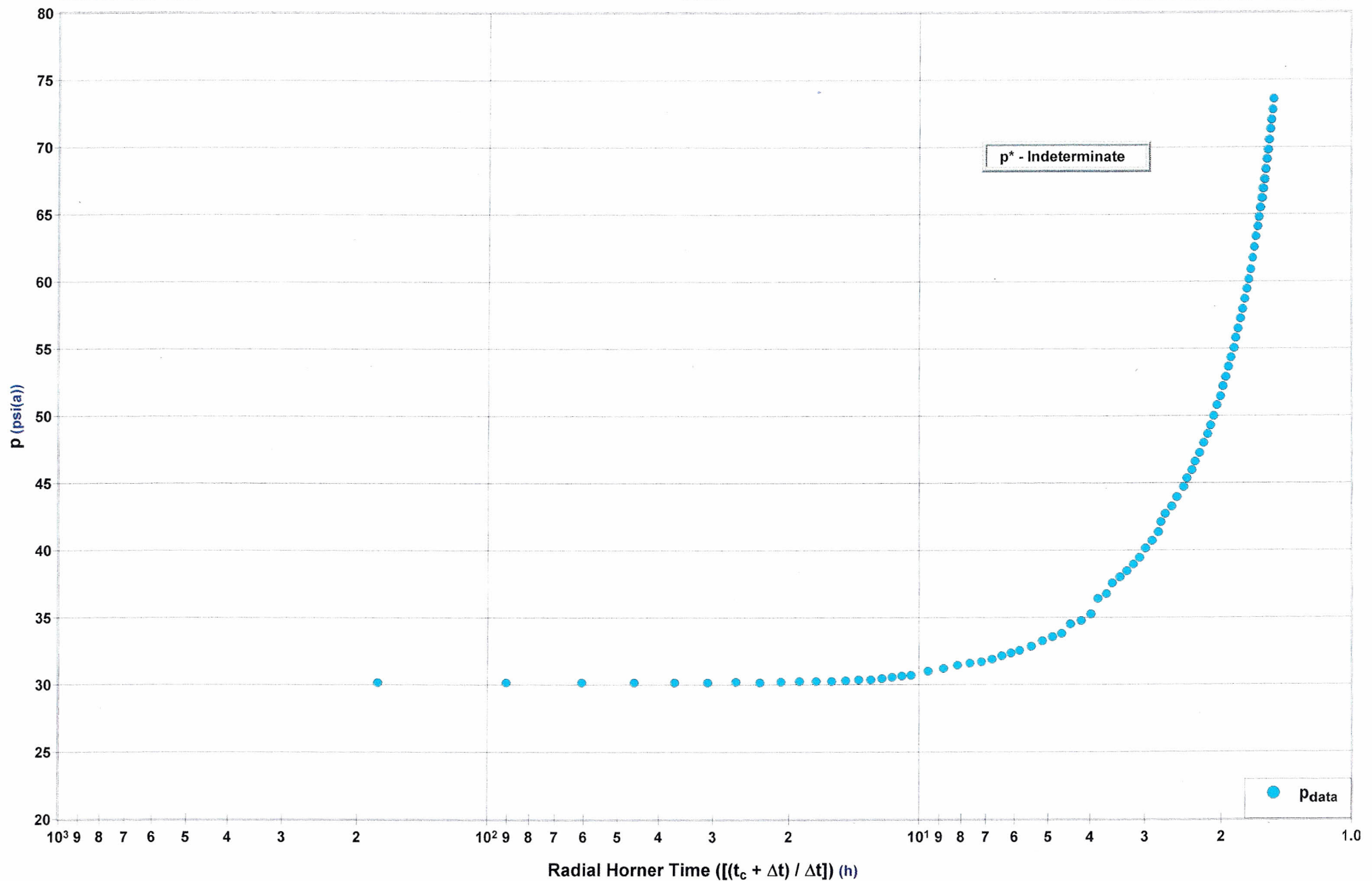


Wiepking - Fullerton Energy LLC  
Interval: 6905' - 6940'

# Diagnostic Plot - Shut In 1

Radial

Kerry 4, Dst 1  
Formation: Marmaton "Torch" Zone

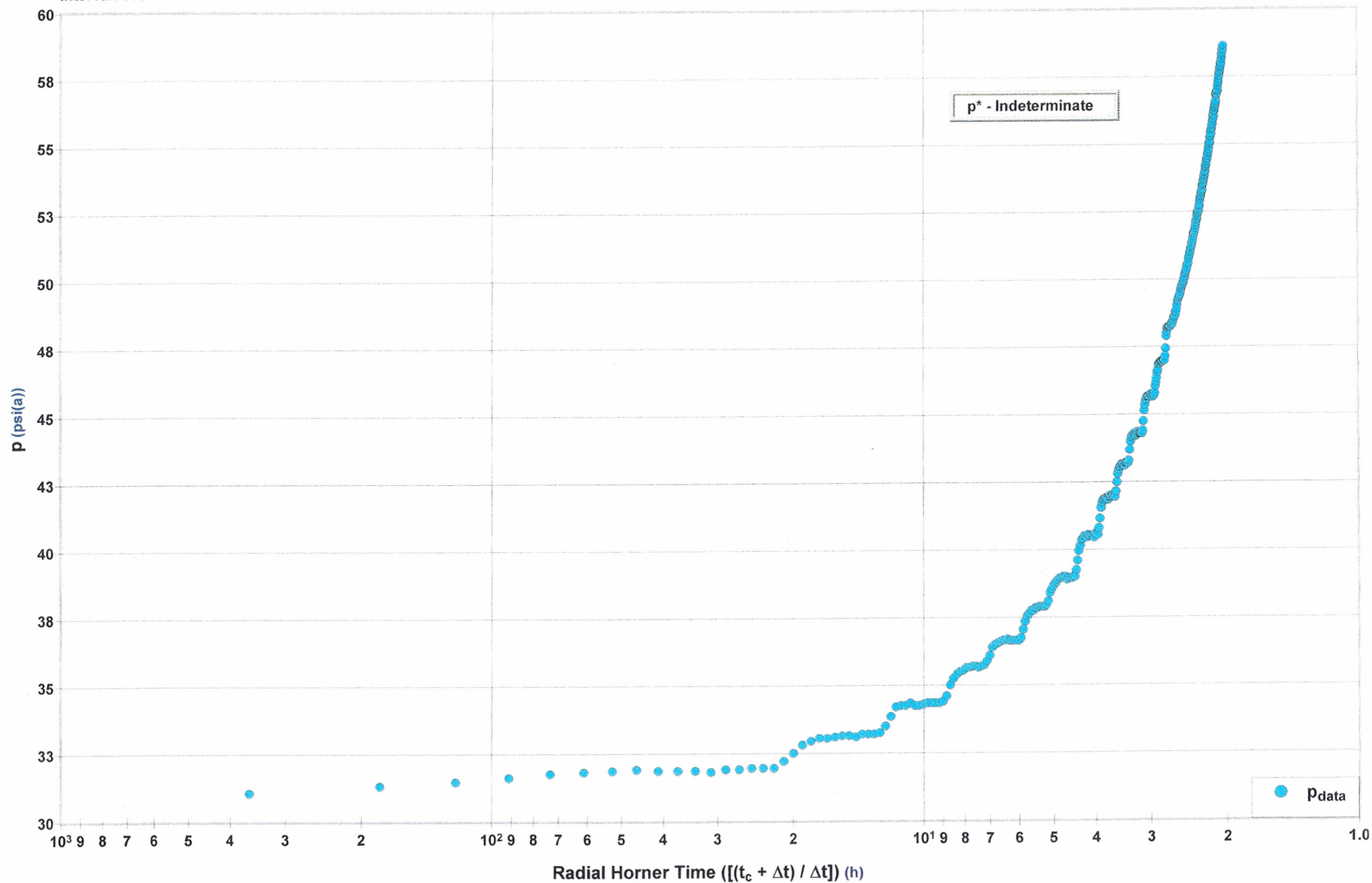


Wiepking - Fullerton Energy LLC  
Interval: 6905' - 6940'

## Diagnostic Plot - Shut In 2

Radial

Kerry 4, Dst 1  
Formation: Marmaton "Torch" Zone





<b>OPERATOR:</b> <span style="color: red;">WIEPKING - FULLERTON ENERGY LLC</span>		<b>TEST NO:</b> <span style="color: red;">2</span>	
<b>WELL NAME:</b> <span style="color: red;">KERRY 4</span>		<b>TICKET NO:</b> <span style="color: red;">2848</span>	

<b>Contractor</b> Murfin Drilling <b>Rig No.</b> 25 <b>Spot</b> NE/SW <b>Sec</b> 20 <b>Twp</b> 10 S <b>Rng</b> 55 W <b>Field</b> Great Plains <b>County</b> Lincoln <b>State</b> Colorado <b>Elevation</b> 5185' GL <b>Formation</b> Pawnee "A"	<b>Surface Choke</b> 1" <b>Bottom Choke</b> 5/8" <b>Hole Size</b> 7 7/8" <b>Core Hole Size</b> <b>DP Size &amp; Wt</b> 4 1/2" 16.60 <b>Wt Pipe</b> <b>ID of DC</b> 2 1/4" <b>Length of DC</b> 543' <b>Total Depth</b> 6995' <b>Type of Test</b> Open Hole Dst <b>Interval</b> 6942'- 6995'	<b>Mud Type</b> Chemical/Gel <b>Weight</b> 9.1 <b>Viscosity</b> 75 <b>Water Loss</b> 7.2 <b>Filter Cake</b> <b>RW</b> @            Deg F <b>Chlorides</b> Ppm  <b>Co. Rep.</b> Gregg Smith <b>Tester</b> Mark Green
---	--	--

<b>Pipe Recovery:</b> 270' Gas above fluid 971' Total fluid = 8.74 bbl., consisting of: 180' Slightly gas cut mud = 2.56 bbl. 791' Water = 6.18 bbl.	<b>Properties:</b> Top Rw:    .20 @ 82 deg F/28,243 ppm Middle Rw: .14 @ 82 deg F/42,167 ppm Bottom Rw: .15 @ 82 deg F/38,988 ppm	<b>Downhole Sampler:</b> Pressure in Sampler    225            psig Volume of Sampler      2050           cc Volume of Sample       1715           cc Oil:                      15                cc Water:                   1450            cc Mud:                     250             cc Gas:                     1.4             cu ft Other:                   0 Rw:                      .15 @ 80 deg F/.07 @ Res Temp Chlorides:    40,009 ppm NaCl., 24,321 ppm Cl. Gas/Oil Ratio Gravity                                API @ 60 Deg F
--	--	--

<b>Surface blow:</b> Pre-Flow: Began with a surface blow, increased to bottom of bucket at 26 minutes and remained thru flow period. Final Flow: Began with no blow, 2" at 5 minutes, increased to bottom of bucket at 24 minutes and remained thru flow period.	Opened Tool @    10:56    hrs on 04/02/2011 <table style="width: 100%; border-collapse: collapse;"> <tr> <th></th> <th style="text-align: center;">Reported</th> <th style="text-align: center;">Corrected</th> <th></th> </tr> <tr> <td>Flow 1</td> <td style="text-align: center;">30</td> <td style="text-align: center;">30</td> <td style="text-align: center;">min</td> </tr> <tr> <td>Shut-in 1</td> <td style="text-align: center;">60</td> <td style="text-align: center;">60</td> <td style="text-align: center;">min</td> </tr> <tr> <td>Flow 2</td> <td style="text-align: center;">60</td> <td style="text-align: center;">60</td> <td style="text-align: center;">min</td> </tr> <tr> <td>Shut-in 2</td> <td style="text-align: center;">120</td> <td style="text-align: center;">120</td> <td style="text-align: center;">min</td> </tr> </table>		Reported	Corrected		Flow 1	30	30	min	Shut-in 1	60	60	min	Flow 2	60	60	min	Shut-in 2	120	120	min
	Reported	Corrected																			
Flow 1	30	30	min																		
Shut-in 1	60	60	min																		
Flow 2	60	60	min																		
Shut-in 2	120	120	min																		

<p style="text-align: center;">Downhole Pressure Chart</p> <p style="text-align: center;">Time</p>	<b>Downhole Pressure Data</b> Recorder Type    JMCO Memory Recorder No.                30024            Cap    10000            psi Depth            6916                ft. Inside    X                                Outside <div style="display: flex; justify-content: space-between;"> <span>Psi(a)</span> <span>Deg (f)</span> </div> Initial Hydrostatic    [A]    3234 Final Hydrostatic      [K]    3199 Initial Flow 1          [B]    70            154 Final Flow 1            [C]    305          173 Initial Flow 2          [E]    299          167 Final Flow 2            [F]    467          181 Shut-in 1                [D]    1814        167 Shut-in 2                [G]    1820        173 Maximum Temperature                                181
--	---

OPERATOR: WIEPKING - FULLERTON ENERGY LLC  
 WELL NAME: KERRY 4

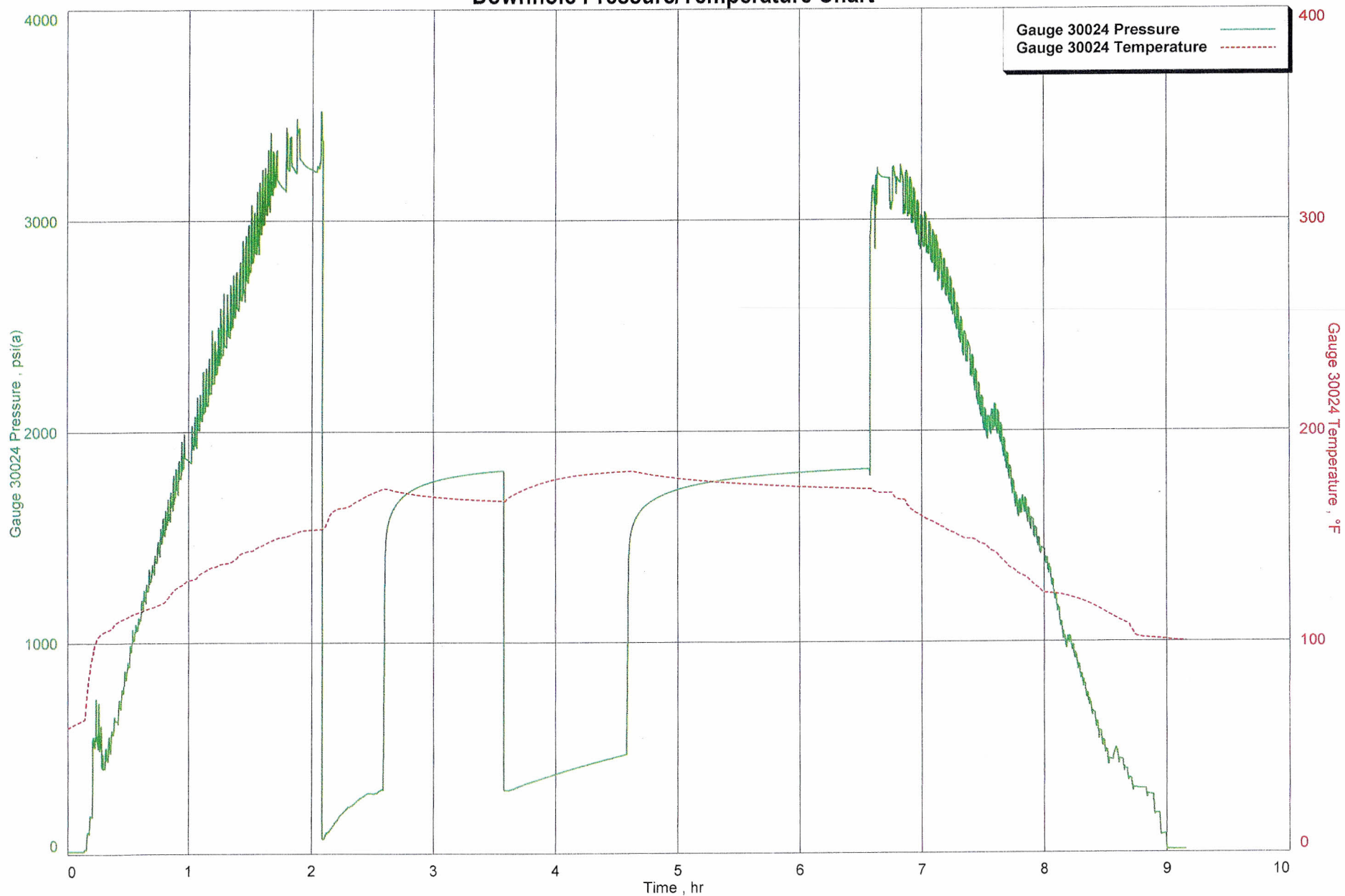
FORMATION: PAWNEE 'A'  
 INTERVAL: 6942'- 6995'

TEST NO: 2  
 DATE: 04/02/2011

Wiepking - Fullerton Energy LLC  
Interval: 6942' - 6995'

Kerry 4, Dst 2  
Formation: Pawnee "A"

### Downhole Pressure/Temperature Chart

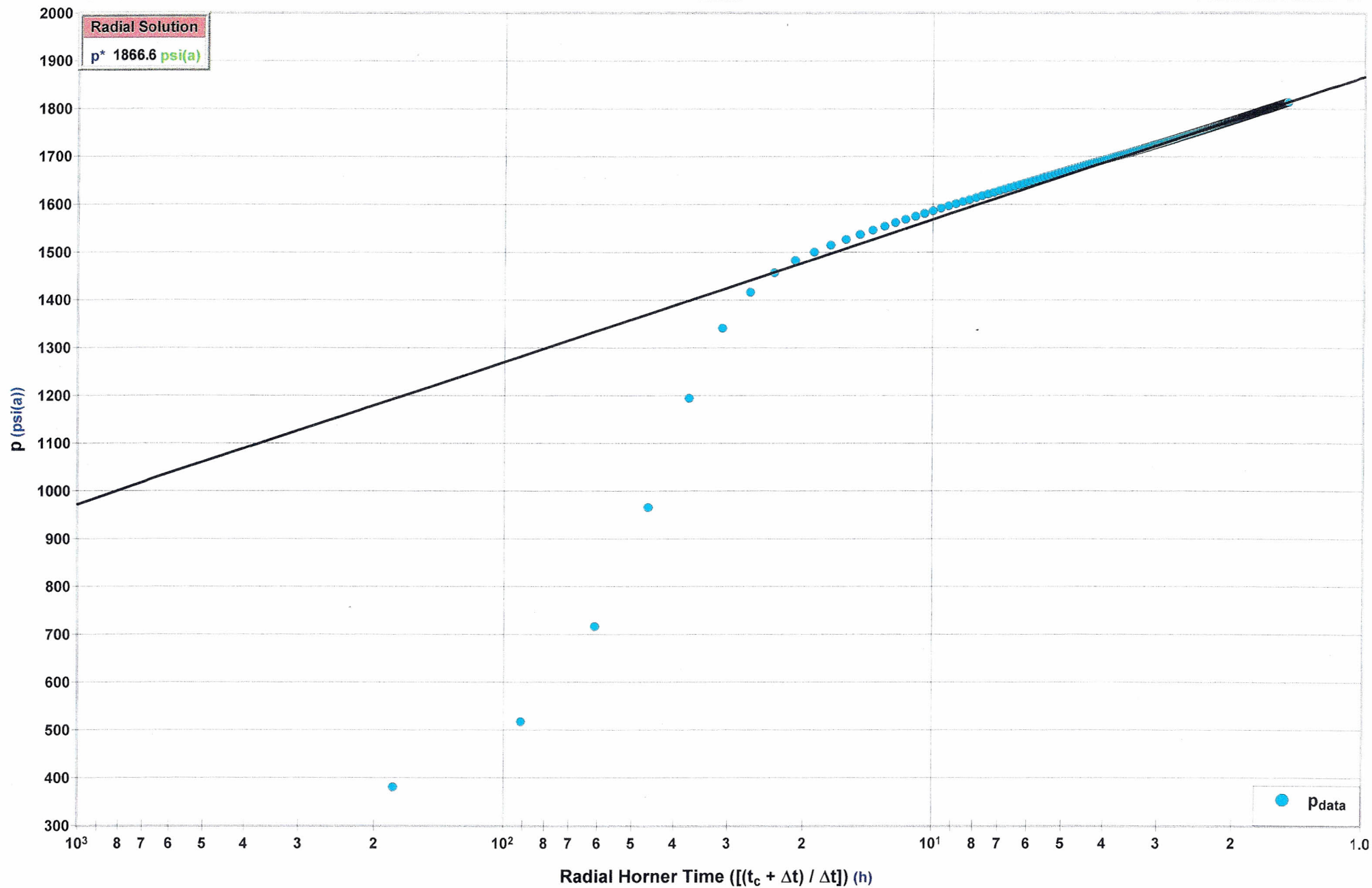


Wiepking - Fullerton Energy LLC  
Interval: 6942' - 6995'

# Diagnostic Plot - Shut In 1

Radial

Kerry 4, Dst 2  
Formation: Pawnee "A"

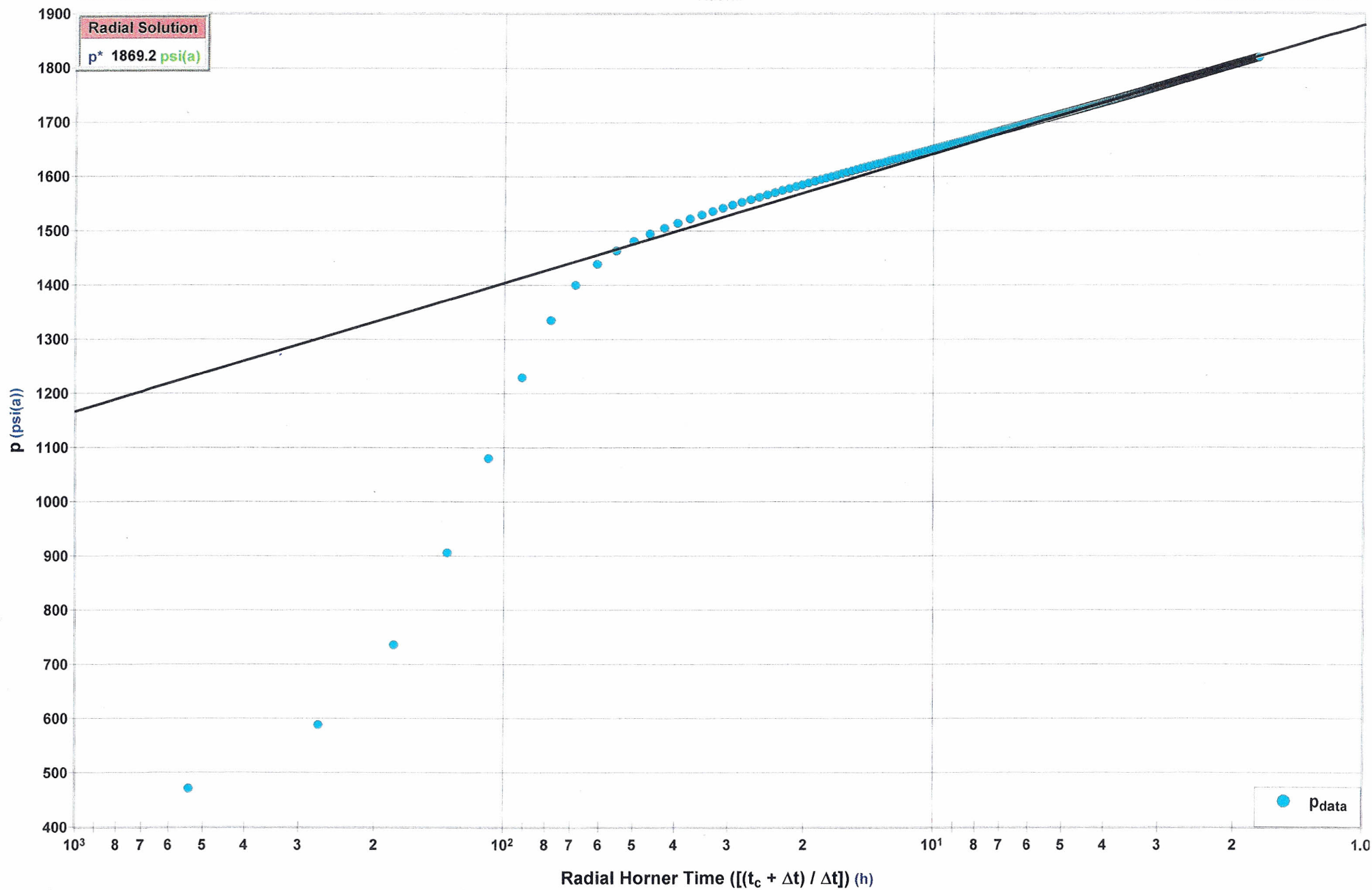


Wiepking - Fullerton Energy LLC  
Interval: 6942' - 6995'

## Diagnostic Plot - Shut In 2

Radial

Kerry 4, Dst 2  
Formation: Pawnee "A"



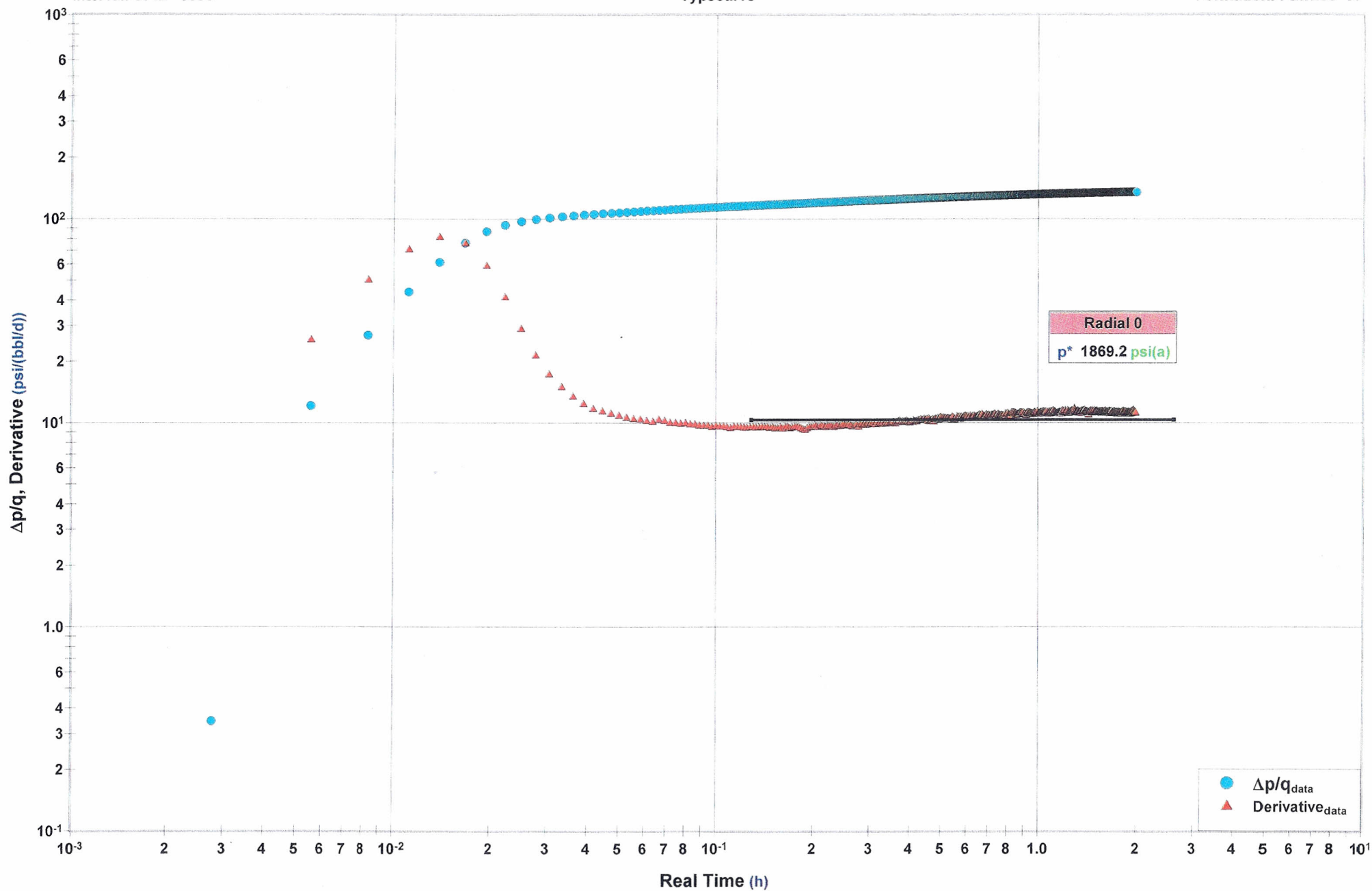


Wiepking - Fullerton Energy LLC  
Interval: 6942' - 6995'

## Diagnostic Plot - Shut In 2

Typecurve

Kerry 4, Dst 2  
Formation: Pawnee "A"



TEST NO: 3  
TICKET NO: 2849

Contractor	Murfin Drilling	Surface Choke	1"	Mud Type	Chemical/Gel		
Rig No.	25	Bottom Choke	5/8"	Weight	8.9		
Spot	NE/SW	Hole Size	7 7/8"	Viscosity	70		
Sec	20	Core Hole Size		Water Loss	8.0		
Twp	10 S	DP Size & Wt	4 1/2" 16.60	Filter Cake			
Rng	55 W	Wt Pipe		RW	@		Deg F
Field	Great Plains	ID of DC	2 1/4"	Chlorides			Ppm
County	Lincoln	Length of DC	543'				
State	Colorado	Total Depth	7096'				
Elevation	5185' GL	Type of Test	Open Hole Dst	Co. Rep.	Gregg Smith		
Formation	Cherokee "A"	Interval	7060'- 7096'	Tester	Mark Green		

**Downhole Sampler:**

Pressure in Sampler	280	psig
Volume of Sampler	2050	cc
Volume of Sample	2050	cc
Oil:	—	cc
Water:	0	cc
Mud:	2050 (see note)	cc
Gas:	—	cu ft
Other:	0	

Pre-Flow: Began with a 2" blow, increased to 4" and remained thru flow period.  
Final Flow: Began with very weak intermittent surface bubbles and remained thru flow period.

Opened Tool @ 21:10 hrs on 04/03/2011

	Reported	Corrected	
Flow 1	30	30	min
Shut-in 1	60	60	min
Flow 2	60	59	min
Shut-in 2	120	120	min

### Downhole Pressure Data

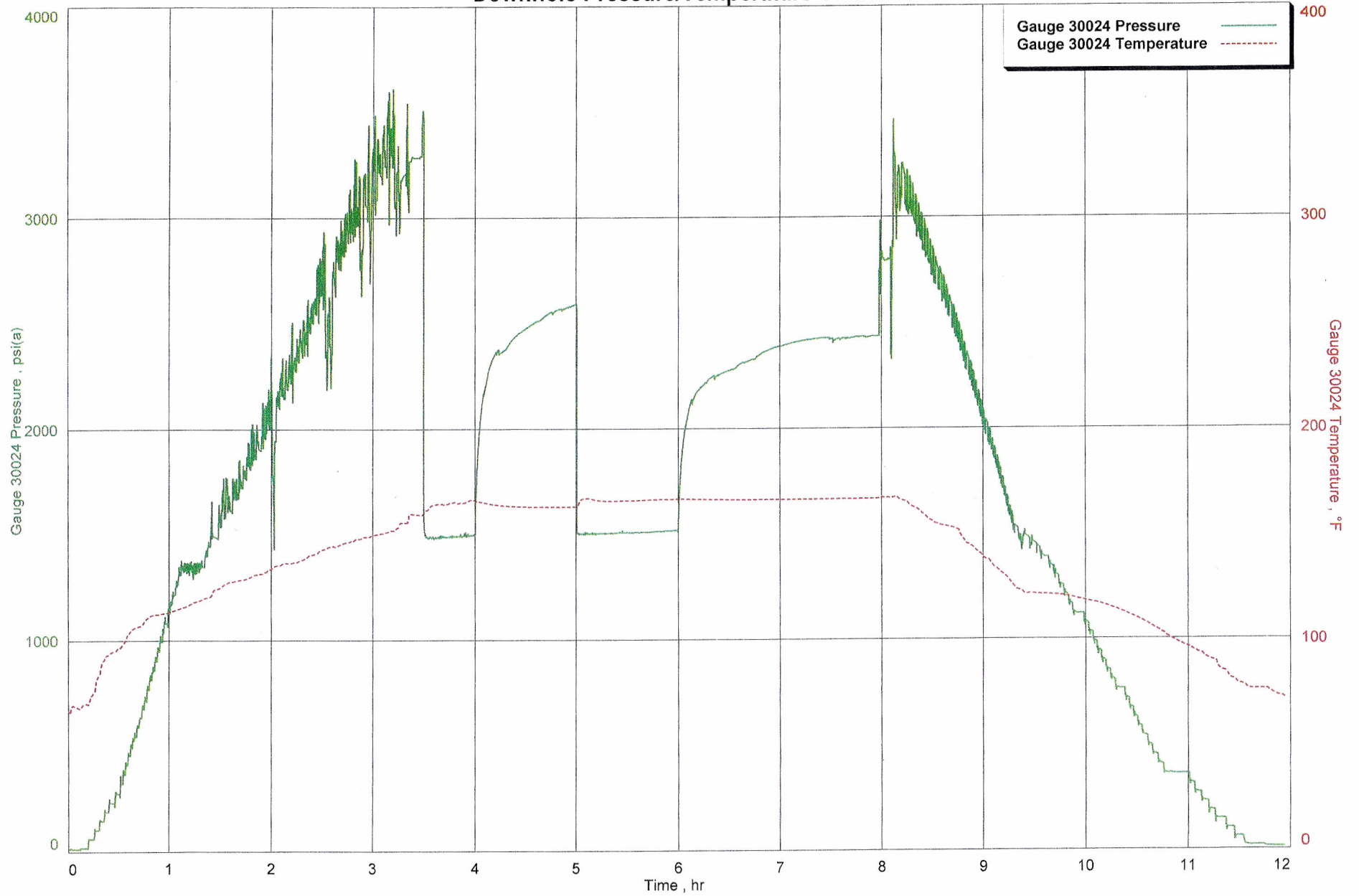
Recorder Type		JMCO Memory Recorder	
No.	30024	Cap	10000
Depth	7034		psi
Inside	X		ft
		Psi(a)	Deg (f)
Initial Hydrostatic	[A]	3285	
Final Hydrostatic	[K]	3286	
Initial Flow 1	[B]	1496	161
Final Flow 1	[C]	1496	166
Initial Flow 2	[E]	1504	163
Final Flow 2	[F]	1518	167
Shut-in 1	[D]	2592	163
Shut-in 2	[G]	2437	167
Maximum Temperature			167

TEST NO: 3  
DATE: 04/03/2011

Wiepking - Fullerton Energy LLC  
Interval: 7060' - 7096'

Kerry 4, Dst 3  
Formation: Cherokee "A"

### Downhole Pressure/Temperature Chart

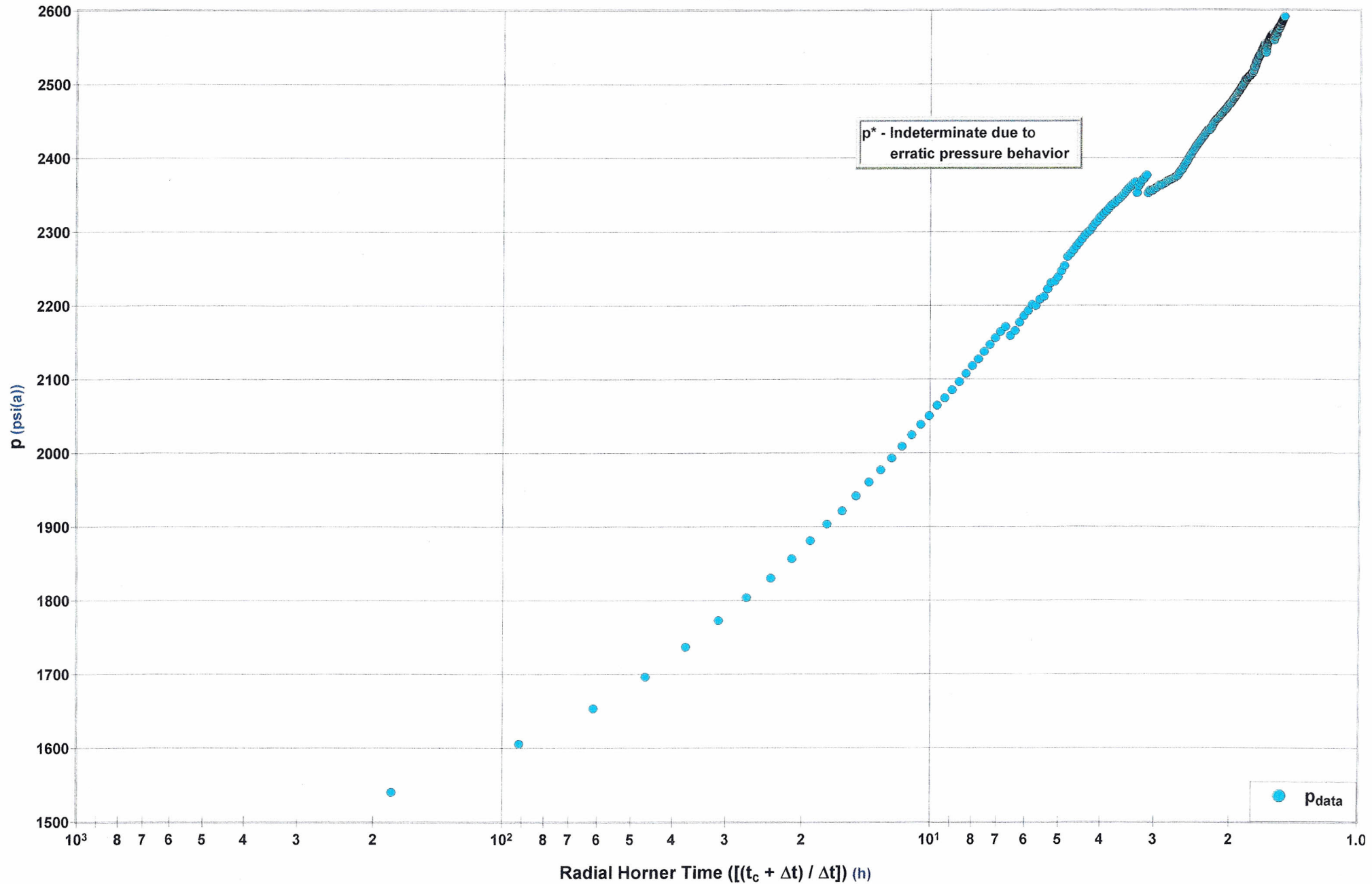


Wiepking - Fullerton Energy LLC  
Interval: 7060' - 7096'

# Diagnostic Plot - Shut In 1

Radial

Kerry 4, Dst 3  
Formation: Cherokee "A"

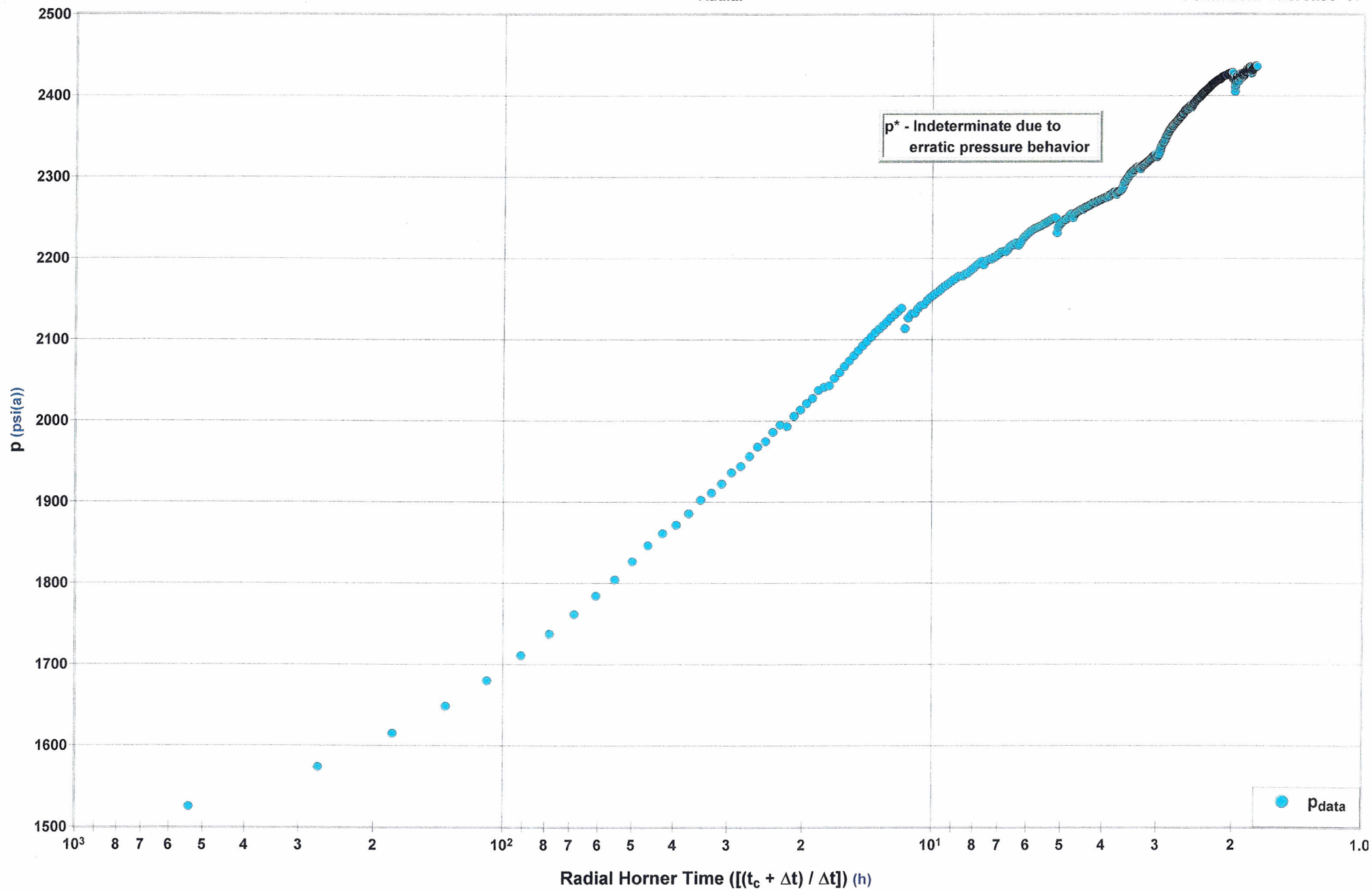


Wiepking - Fullerton Energy LLC  
Interval: 7060' - 7096'

## Diagnostic Plot - Shut In 2

Radial

Kerry 4, Dst 3  
Formation: Cherokee "A"





# Test-A-Log Co.

OPERATOR: **WIEPKING - FULLERTON ENERGY LLC**  
WELL NAME: **KERRY 4**

TEST NO: **4**  
TICKET NO: **2850**

Contractor Murfin Drilling  
Rig No. 25  
Spot NE/SW  
Sec 20  
Twp 10 S  
Rng 55 W  
Field Great Plains  
County Lincoln  
State Colorado  
Elevation 5185' GL  
Formation Cherokee "A"

Surface Choke 1"  
Bottom Choke 5/8"  
Hole Size 7 7/8"  
Core Hole Size  
DP Size & Wt 4 1/2" 16.60  
Wt Pipe  
ID of DC 2 1/4"  
Length of DC 543'  
Total Depth 7096'  
Type of Test Open Hole Dst  
Interval 7060'- 7096'

Mud Type Chemical/Gel  
Weight 8.9  
Viscosity 66  
Water Loss 8.0  
Filter Cake  
RW @ Deg F  
Chlorides Ppm  
Co. Rep. Gregg Smith  
Tester Mark Green

## Pipe Recovery:

543' Gas cut mud

## Properties:

## Surface blow:

Pre-Flow: Began with a 1/2" blow, increased to 4" at 4 minutes. Packer seats failed at 7 minutes.

**\*\* MISRUN \*\***

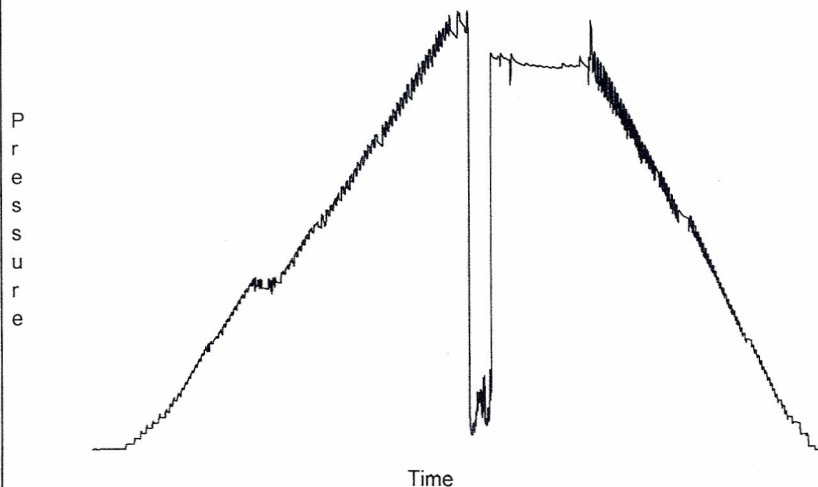
## Downhole Sampler:

Pressure in Sampler 0 psig  
Volume of Sampler 2050 cc  
Volume of Sample 2050 cc  
Oil: 0 cc  
Water: 0 cc  
Mud: Gas cut mud 2050 cc  
Gas: - cu ft  
Other: 0  
Rw:  
Chlorides:  
Gas/Oil Ratio  
Gravity API @ 60 Deg F

Opened Tool @ 23:18 hrs on 04/04/2011

	Reported	Corrected	
Flow 1		12	min
Shut-in 1			min
Flow 2			min
Shut-in 2			min

Downhole Pressure Chart



## Downhole Pressure Data

Recorder Type JMCO Memory Recorder  
No. 30024 Cap 10000 psi  
Depth 7038 ft.  
Inside X Outside  
Psi(a) Deg (f)  
Initial Hydrostatic [A]  
Final Hydrostatic [K]  
Initial Flow 1 [B]  
Final Flow 1 [C]  
Initial Flow 2 [E]  
Final Flow 2 [F]  
Shut-in 1 [D]  
Shut-in 2 [G]

Maximum Temperature

OPERATOR: **WIEPKING - FULLERTON ENERGY LLC**  
WELL NAME: **KERRY 4**

FORMATION: **CHEROKEE "A"**  
INTERVAL: **7060' - 7096'**

TEST NO: **4**  
DATE: **04/04/2011**



Wiepking - Fullerton Energy LLC  
Interval: 7060' - 7096'

Kerry 4, Dst 4  
Formation: Cherokee "A"

### Downhole Pressure/Temperature Chart

