

ENSIGN

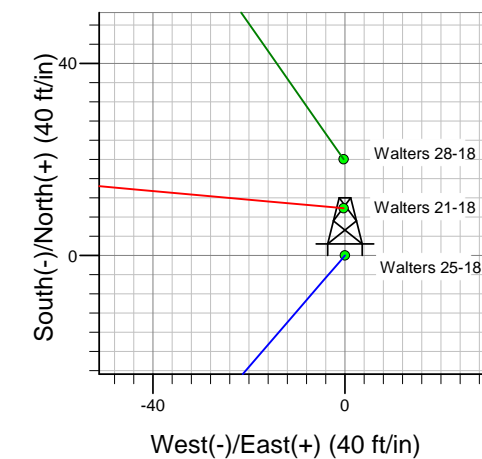
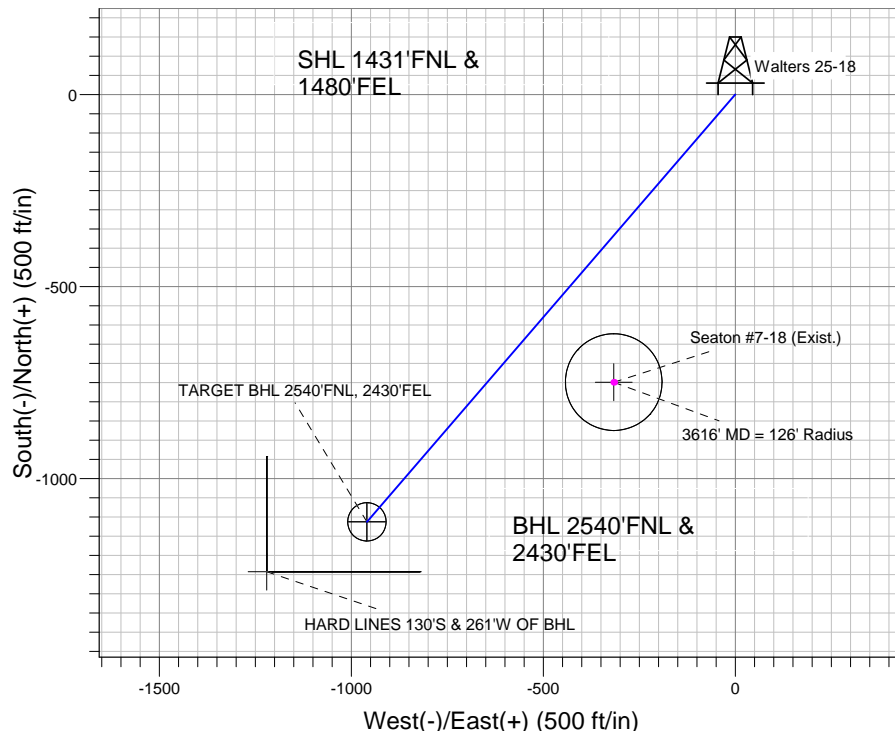
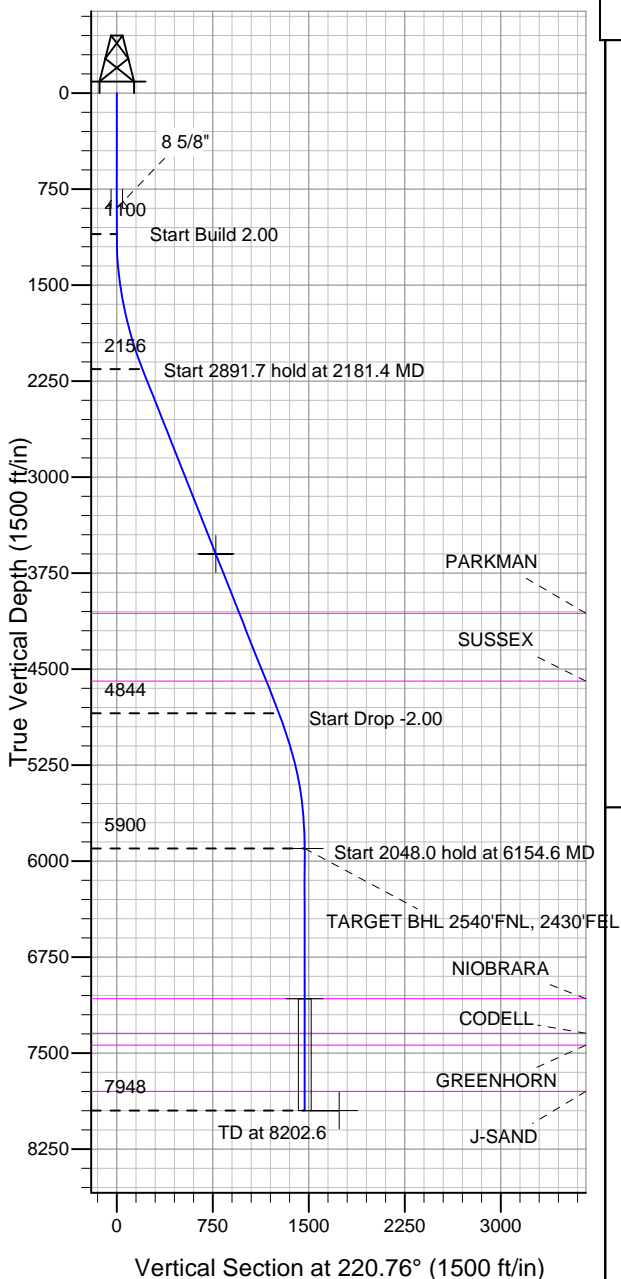
Directional

Well Name: Walters 25-18

Surface Location: Walters 17-18 Pad Sec.18-T2N-R65W
 North American Datum 1983 , US State Plane 1983 , Colorado Northern Zone
 Ground Elevation: 4963.0

+N/-S	+E/-W	Northing	Easting	Latitude	Longitude	Slot
0.0	0.0	1295582.25	3222924.03	40.142016	-104.702608	
Original Well Elev WELL @ 4977.0ft (Original Well Elev)						

Anadarko, Weld County CO



FORMATION TOP DETAILS

TVDPath	MDPath	Formation
4063.0	4232.9	PARKMAN
4593.0	4803.1	SUSSEX
7073.0	7327.6	NIOBRARA
7343.0	7597.6	CODELL
7436.0	7690.6	GREENHORN
7798.0	8052.6	J-SAND



Azimuths to True North
 Magnetic North: 8.84°

Magnetic Field
 Strength: 53023.0nT
 Dip Angle: 66.86°
 Date: 4/1/2011
 Model: IGRF2010

Well Name: Walters 25-18 Lat/Long: 40.142016 -104.702608

WELLBORE TARGET DETAILS (LAT/LONG)

Name	TVD	+N/-S	+E/-W	Latitude	Longitude	Shape
3616' MD = 126' Radius	3599.0	-749.0	-316.5	40.139960	-104.703740	Circle (Radius: 126.0)
TARGET BHL 2540'FNL, 2430'FEL	5900.0	-1112.9	-959.3	40.138961	-104.706039	Point
TARGET CIRCLE 2540'FNL & 2430'FEL	7073.0	-1112.9	-959.3	40.138961	-104.706039	Circle (Radius: 50.0)
HARD LINES 130'S & 261'W OF BHL	7948.0	-1242.9	-1220.3	40.138604	-104.706973	Polygon

SECTION DETAILS

Sec	MD	Inc	Azi	TVD	+N/-S	+E/-W	DLeg	TFace	VSec	Target
1	0.0	0.00	0.00	0.0	0.0	0.0	0.00	0.00	0.0	
2	1100.0	0.00	0.00	1100.0	0.0	0.0	0.00	0.00	0.0	
3	2181.4	21.63	220.76	2155.9	-152.8	-131.7	2.00	220.76	201.7	
4	5073.2	21.63	220.76	4844.1	-960.1	-827.6	0.00	0.00	1267.6	
5	6154.6	0.00	0.00	5900.0	-1112.9	-959.3	2.00	180.00	1469.3	TARGET BHL 2540'FNL, 2430'FEL
6	8202.6	0.00	0.00	7948.0	-1112.9	-959.3	0.00	0.00	1469.3	

CASING DETAILS

TVD	MD	Name	Size
900.0	900.0	8 5/8"	8-5/8
Walters 17-18 Pad Sec.18-T2N-R65W Walters 25-18 Plan #1 (4-01-11) 12:22, April 08 2011			



Anadarko, Weld County CO

SEC.18-T2N-R65W

Walters 17-18 Pad Sec.18-T2N-R65W

Walters 25-18

Wellbore #1

Plan: Plan #1 (4-01-11)

Standard Planning Report

08 April, 2011



Database:	Landmark	Local Co-ordinate Reference:	Well Walters 25-18
Company:	Anadarko, Weld County CO	TVD Reference:	WELL @ 4977.0ft (Original Well Elev)
Project:	SEC.18-T2N-R65W	MD Reference:	WELL @ 4977.0ft (Original Well Elev)
Site:	Walters 17-18 Pad Sec.18-T2N-R65W	North Reference:	True
Well:	Walters 25-18	Survey Calculation Method:	Minimum Curvature
Wellbore:	Wellbore #1		
Design:	Plan #1 (4-01-11)		

Project	SEC.18-T2N-R65W, Weld County, Colorado		
Map System:	US State Plane 1983	System Datum:	Mean Sea Level
Geo Datum:	North American Datum 1983		Using Well Reference Point
Map Zone:	Colorado Northern Zone		Using geodetic scale factor

Site		Walters 17-18 Pad Sec.18-T2N-R65W			
Site Position:		Northing:	1,295,602.30 ft	Latitude:	40.142071
From:	Lat/Long	Easting:	3,222,923.57 ft	Longitude:	-104.702609
Position Uncertainty:	0.0 ft	Slot Radius:	"	Grid Convergence:	0.52 °

Well	Walters 25-18					
Well Position	+N/-S	-20.0 ft	Northing:	1,295,582.25 ft	Latitude:	40.142016
	+E/-W	0.3 ft	Easting:	3,222,924.03 ft	Longitude:	-104.702608
Position Uncertainty		0.0 ft	Wellhead Elevation:	ft	Ground Level:	4,963.0 ft

Wellbore	Wellbore #1				
Magnetics	Model Name	Sample Date	Declination (°)	Dip Angle (°)	Field Strength (nT)
	IGRF2010	4/1/2011	8.84	66.86	53,023

Design	Plan #1 (4-01-11)			
Audit Notes:				
Version:	Phase:	PROTOTYPE	Tie On Depth:	0.0
Vertical Section:	Depth From (TVD) (ft)	+N/-S (ft)	+E/-W (ft)	Direction (°)
	0.0	0.0	0.0	220.76

Plan Sections										
Measured Depth (ft)	Inclination (°)	Azimuth (°)	Vertical Depth (ft)	+N/-S (ft)	+E/-W (ft)	Dogleg Rate (°/100ft)	Build Rate (°/100ft)	Turn Rate (°/100ft)	TFO (°)	Target
0.0	0.00	0.00	0.0	0.0	0.0	0.00	0.00	0.00	0.00	
1,100.0	0.00	0.00	1,100.0	0.0	0.0	0.00	0.00	0.00	0.00	
2,181.4	21.63	220.76	2,155.9	-152.8	-131.7	2.00	2.00	0.00	220.76	
5,073.2	21.63	220.76	4,844.1	-960.1	-827.6	0.00	0.00	0.00	0.00	
6,154.6	0.00	0.00	5,900.0	-1,112.9	-959.3	2.00	-2.00	0.00	180.00	TARGET BHL 254C
8,202.6	0.00	0.00	7,948.0	-1,112.9	-959.3	0.00	0.00	0.00	0.00	

Database:	Landmark	Local Co-ordinate Reference:	Well Walters 25-18
Company:	Anadarko, Weld County CO	TVD Reference:	WELL @ 4977.0ft (Original Well Elev)
Project:	SEC.18-T2N-R65W	MD Reference:	WELL @ 4977.0ft (Original Well Elev)
Site:	Walters 17-18 Pad Sec.18-T2N-R65W	North Reference:	True
Well:	Walters 25-18	Survey Calculation Method:	Minimum Curvature
Wellbore:	Wellbore #1		
Design:	Plan #1 (4-01-11)		

Planned Survey									
Measured Depth (ft)	Inclination (°)	Azimuth (°)	Vertical Depth (ft)	+N/-S (ft)	+E/-W (ft)	Vertical Section (ft)	Dogleg Rate (°/100ft)	Build Rate (°/100ft)	Turn Rate (°/100ft)
0.0	0.00	0.00	0.0	0.0	0.0	0.0	0.00	0.00	0.00
40.0	0.00	0.00	40.0	0.0	0.0	0.0	0.00	0.00	0.00
80.0	0.00	0.00	80.0	0.0	0.0	0.0	0.00	0.00	0.00
120.0	0.00	0.00	120.0	0.0	0.0	0.0	0.00	0.00	0.00
160.0	0.00	0.00	160.0	0.0	0.0	0.0	0.00	0.00	0.00
200.0	0.00	0.00	200.0	0.0	0.0	0.0	0.00	0.00	0.00
240.0	0.00	0.00	240.0	0.0	0.0	0.0	0.00	0.00	0.00
280.0	0.00	0.00	280.0	0.0	0.0	0.0	0.00	0.00	0.00
320.0	0.00	0.00	320.0	0.0	0.0	0.0	0.00	0.00	0.00
360.0	0.00	0.00	360.0	0.0	0.0	0.0	0.00	0.00	0.00
400.0	0.00	0.00	400.0	0.0	0.0	0.0	0.00	0.00	0.00
440.0	0.00	0.00	440.0	0.0	0.0	0.0	0.00	0.00	0.00
480.0	0.00	0.00	480.0	0.0	0.0	0.0	0.00	0.00	0.00
520.0	0.00	0.00	520.0	0.0	0.0	0.0	0.00	0.00	0.00
560.0	0.00	0.00	560.0	0.0	0.0	0.0	0.00	0.00	0.00
600.0	0.00	0.00	600.0	0.0	0.0	0.0	0.00	0.00	0.00
640.0	0.00	0.00	640.0	0.0	0.0	0.0	0.00	0.00	0.00
680.0	0.00	0.00	680.0	0.0	0.0	0.0	0.00	0.00	0.00
720.0	0.00	0.00	720.0	0.0	0.0	0.0	0.00	0.00	0.00
760.0	0.00	0.00	760.0	0.0	0.0	0.0	0.00	0.00	0.00
800.0	0.00	0.00	800.0	0.0	0.0	0.0	0.00	0.00	0.00
840.0	0.00	0.00	840.0	0.0	0.0	0.0	0.00	0.00	0.00
880.0	0.00	0.00	880.0	0.0	0.0	0.0	0.00	0.00	0.00
900.0	0.00	0.00	900.0	0.0	0.0	0.0	0.00	0.00	0.00
8 5/8"									
920.0	0.00	0.00	920.0	0.0	0.0	0.0	0.00	0.00	0.00
960.0	0.00	0.00	960.0	0.0	0.0	0.0	0.00	0.00	0.00
1,000.0	0.00	0.00	1,000.0	0.0	0.0	0.0	0.00	0.00	0.00
1,040.0	0.00	0.00	1,040.0	0.0	0.0	0.0	0.00	0.00	0.00
1,080.0	0.00	0.00	1,080.0	0.0	0.0	0.0	0.00	0.00	0.00
1,100.0	0.00	0.00	1,100.0	0.0	0.0	0.0	0.00	0.00	0.00
1,120.0	0.40	220.76	1,120.0	-0.1	0.0	0.1	2.00	2.00	0.00
1,160.0	1.20	220.76	1,160.0	-0.5	-0.4	0.6	2.00	2.00	0.00
1,200.0	2.00	220.76	1,200.0	-1.3	-1.1	1.7	2.00	2.00	0.00
1,240.0	2.80	220.76	1,239.9	-2.6	-2.2	3.4	2.00	2.00	0.00
1,280.0	3.60	220.76	1,279.9	-4.3	-3.7	5.7	2.00	2.00	0.00
1,320.0	4.40	220.76	1,319.8	-6.4	-5.5	8.4	2.00	2.00	0.00
1,360.0	5.20	220.76	1,359.6	-8.9	-7.7	11.8	2.00	2.00	0.00
1,400.0	6.00	220.76	1,399.5	-11.9	-10.2	15.7	2.00	2.00	0.00
1,440.0	6.80	220.76	1,439.2	-15.3	-13.2	20.2	2.00	2.00	0.00
1,480.0	7.60	220.76	1,478.9	-19.1	-16.4	25.2	2.00	2.00	0.00
1,520.0	8.40	220.76	1,518.5	-23.3	-20.1	30.7	2.00	2.00	0.00
1,560.0	9.20	220.76	1,558.0	-27.9	-24.1	36.9	2.00	2.00	0.00
1,600.0	10.00	220.76	1,597.5	-33.0	-28.4	43.5	2.00	2.00	0.00
1,640.0	10.80	220.76	1,636.8	-38.4	-33.1	50.7	2.00	2.00	0.00
1,680.0	11.60	220.76	1,676.0	-44.3	-38.2	58.5	2.00	2.00	0.00
1,720.0	12.40	220.76	1,715.2	-50.6	-43.6	66.8	2.00	2.00	0.00
1,760.0	13.20	220.76	1,754.2	-57.3	-49.4	75.7	2.00	2.00	0.00
1,800.0	14.00	220.76	1,793.1	-64.5	-55.6	85.1	2.00	2.00	0.00
1,840.0	14.80	220.76	1,831.8	-72.0	-62.1	95.0	2.00	2.00	0.00
1,880.0	15.60	220.76	1,870.4	-79.9	-68.9	105.5	2.00	2.00	0.00
1,920.0	16.40	220.76	1,908.8	-88.3	-76.1	116.6	2.00	2.00	0.00
1,960.0	17.20	220.76	1,947.1	-97.0	-83.6	128.1	2.00	2.00	0.00
2,000.0	18.00	220.76	1,985.3	-106.2	-91.5	140.2	2.00	2.00	0.00

Database:	Landmark	Local Co-ordinate Reference:	Well Walters 25-18
Company:	Anadarko, Weld County CO	TVD Reference:	WELL @ 4977.0ft (Original Well Elev)
Project:	SEC.18-T2N-R65W	MD Reference:	WELL @ 4977.0ft (Original Well Elev)
Site:	Walters 17-18 Pad Sec.18-T2N-R65W	North Reference:	True
Well:	Walters 25-18	Survey Calculation Method:	Minimum Curvature
Wellbore:	Wellbore #1		
Design:	Plan #1 (4-01-11)		

Planned Survey									
Measured Depth (ft)	Inclination (°)	Azimuth (°)	Vertical Depth (ft)	+N/-S (ft)	+E/-W (ft)	Vertical Section (ft)	Dogleg Rate (°/100ft)	Build Rate (°/100ft)	Turn Rate (°/100ft)
2,040.0	18.80	220.76	2,023.2	-115.8	-99.8	152.8	2.00	2.00	0.00
2,080.0	19.60	220.76	2,061.0	-125.7	-108.4	166.0	2.00	2.00	0.00
2,120.0	20.40	220.76	2,098.6	-136.1	-117.3	179.7	2.00	2.00	0.00
2,160.0	21.20	220.76	2,136.0	-146.9	-126.6	193.9	2.00	2.00	0.00
2,181.4	21.63	220.76	2,155.9	-152.8	-131.7	201.7	2.00	2.00	0.00
2,200.0	21.63	220.76	2,173.2	-158.0	-136.2	208.5	0.00	0.00	0.00
2,240.0	21.63	220.76	2,210.4	-169.1	-145.8	223.3	0.00	0.00	0.00
2,280.0	21.63	220.76	2,247.6	-180.3	-155.4	238.0	0.00	0.00	0.00
2,320.0	21.63	220.76	2,284.7	-191.5	-165.0	252.8	0.00	0.00	0.00
2,360.0	21.63	220.76	2,321.9	-202.6	-174.7	267.5	0.00	0.00	0.00
2,400.0	21.63	220.76	2,359.1	-213.8	-184.3	282.3	0.00	0.00	0.00
2,440.0	21.63	220.76	2,396.3	-225.0	-193.9	297.0	0.00	0.00	0.00
2,480.0	21.63	220.76	2,433.5	-236.1	-203.5	311.8	0.00	0.00	0.00
2,520.0	21.63	220.76	2,470.7	-247.3	-213.2	326.5	0.00	0.00	0.00
2,560.0	21.63	220.76	2,507.8	-258.5	-222.8	341.2	0.00	0.00	0.00
2,600.0	21.63	220.76	2,545.0	-269.6	-232.4	356.0	0.00	0.00	0.00
2,640.0	21.63	220.76	2,582.2	-280.8	-242.0	370.7	0.00	0.00	0.00
2,680.0	21.63	220.76	2,619.4	-292.0	-251.7	385.5	0.00	0.00	0.00
2,720.0	21.63	220.76	2,656.6	-303.1	-261.3	400.2	0.00	0.00	0.00
2,760.0	21.63	220.76	2,693.8	-314.3	-270.9	415.0	0.00	0.00	0.00
2,800.0	21.63	220.76	2,730.9	-325.5	-280.6	429.7	0.00	0.00	0.00
2,840.0	21.63	220.76	2,768.1	-336.6	-290.2	444.4	0.00	0.00	0.00
2,880.0	21.63	220.76	2,805.3	-347.8	-299.8	459.2	0.00	0.00	0.00
2,920.0	21.63	220.76	2,842.5	-359.0	-309.4	473.9	0.00	0.00	0.00
2,960.0	21.63	220.76	2,879.7	-370.1	-319.1	488.7	0.00	0.00	0.00
3,000.0	21.63	220.76	2,916.9	-381.3	-328.7	503.4	0.00	0.00	0.00
3,040.0	21.63	220.76	2,954.0	-392.5	-338.3	518.2	0.00	0.00	0.00
3,080.0	21.63	220.76	2,991.2	-403.6	-347.9	532.9	0.00	0.00	0.00
3,120.0	21.63	220.76	3,028.4	-414.8	-357.6	547.7	0.00	0.00	0.00
3,160.0	21.63	220.76	3,065.6	-426.0	-367.2	562.4	0.00	0.00	0.00
3,200.0	21.63	220.76	3,102.8	-437.1	-376.8	577.1	0.00	0.00	0.00
3,240.0	21.63	220.76	3,140.0	-448.3	-386.4	591.9	0.00	0.00	0.00
3,280.0	21.63	220.76	3,177.2	-459.5	-396.1	606.6	0.00	0.00	0.00
3,320.0	21.63	220.76	3,214.3	-470.7	-405.7	621.4	0.00	0.00	0.00
3,360.0	21.63	220.76	3,251.5	-481.8	-415.3	636.1	0.00	0.00	0.00
3,400.0	21.63	220.76	3,288.7	-493.0	-424.9	650.9	0.00	0.00	0.00
3,440.0	21.63	220.76	3,325.9	-504.2	-434.6	665.6	0.00	0.00	0.00
3,480.0	21.63	220.76	3,363.1	-515.3	-444.2	680.3	0.00	0.00	0.00
3,520.0	21.63	220.76	3,400.3	-526.5	-453.8	695.1	0.00	0.00	0.00
3,560.0	21.63	220.76	3,437.4	-537.7	-463.4	709.8	0.00	0.00	0.00
3,600.0	21.63	220.76	3,474.6	-548.8	-473.1	724.6	0.00	0.00	0.00
3,640.0	21.63	220.76	3,511.8	-560.0	-482.7	739.3	0.00	0.00	0.00
3,680.0	21.63	220.76	3,549.0	-571.2	-492.3	754.1	0.00	0.00	0.00
3,720.0	21.63	220.76	3,586.2	-582.3	-502.0	768.8	0.00	0.00	0.00
3,733.8	21.63	220.76	3,599.0	-586.2	-505.3	773.9	0.00	0.00	0.00
3616' MD = 126' Radius									
3,760.0	21.63	220.76	3,623.4	-593.5	-511.6	783.5	0.00	0.00	0.00
3,800.0	21.63	220.76	3,660.5	-604.7	-521.2	798.3	0.00	0.00	0.00
3,840.0	21.63	220.76	3,697.7	-615.8	-530.8	813.0	0.00	0.00	0.00
3,880.0	21.63	220.76	3,734.9	-627.0	-540.5	827.8	0.00	0.00	0.00
3,920.0	21.63	220.76	3,772.1	-638.2	-550.1	842.5	0.00	0.00	0.00
3,960.0	21.63	220.76	3,809.3	-649.3	-559.7	857.3	0.00	0.00	0.00
4,000.0	21.63	220.76	3,846.5	-660.5	-569.3	872.0	0.00	0.00	0.00

Database:	Landmark	Local Co-ordinate Reference:	Well Walters 25-18
Company:	Anadarko, Weld County CO	TVD Reference:	WELL @ 4977.0ft (Original Well Elev)
Project:	SEC.18-T2N-R65W	MD Reference:	WELL @ 4977.0ft (Original Well Elev)
Site:	Walters 17-18 Pad Sec.18-T2N-R65W	North Reference:	True
Well:	Walters 25-18	Survey Calculation Method:	Minimum Curvature
Wellbore:	Wellbore #1		
Design:	Plan #1 (4-01-11)		

Planned Survey									
Measured Depth (ft)	Inclination (°)	Azimuth (°)	Vertical Depth (ft)	+N/-S (ft)	+E/-W (ft)	Vertical Section (ft)	Dogleg Rate (°/100ft)	Build Rate (°/100ft)	Turn Rate (°/100ft)
4,040.0	21.63	220.76	3,883.6	-671.7	-579.0	886.8	0.00	0.00	0.00
4,080.0	21.63	220.76	3,920.8	-682.8	-588.6	901.5	0.00	0.00	0.00
4,120.0	21.63	220.76	3,958.0	-694.0	-598.2	916.2	0.00	0.00	0.00
4,160.0	21.63	220.76	3,995.2	-705.2	-607.8	931.0	0.00	0.00	0.00
4,200.0	21.63	220.76	4,032.4	-716.3	-617.5	945.7	0.00	0.00	0.00
4,232.9	21.63	220.76	4,063.0	-725.5	-625.4	957.9	0.00	0.00	0.00
PARKMAN									
4,240.0	21.63	220.76	4,069.6	-727.5	-627.1	960.5	0.00	0.00	0.00
4,280.0	21.63	220.76	4,106.7	-738.7	-636.7	975.2	0.00	0.00	0.00
4,320.0	21.63	220.76	4,143.9	-749.8	-646.3	990.0	0.00	0.00	0.00
4,360.0	21.63	220.76	4,181.1	-761.0	-656.0	1,004.7	0.00	0.00	0.00
4,400.0	21.63	220.76	4,218.3	-772.2	-665.6	1,019.4	0.00	0.00	0.00
4,440.0	21.63	220.76	4,255.5	-783.3	-675.2	1,034.2	0.00	0.00	0.00
4,480.0	21.63	220.76	4,292.7	-794.5	-684.8	1,048.9	0.00	0.00	0.00
4,520.0	21.63	220.76	4,329.8	-805.7	-694.5	1,063.7	0.00	0.00	0.00
4,560.0	21.63	220.76	4,367.0	-816.8	-704.1	1,078.4	0.00	0.00	0.00
4,600.0	21.63	220.76	4,404.2	-828.0	-713.7	1,093.2	0.00	0.00	0.00
4,640.0	21.63	220.76	4,441.4	-839.2	-723.4	1,107.9	0.00	0.00	0.00
4,680.0	21.63	220.76	4,478.6	-850.3	-733.0	1,122.7	0.00	0.00	0.00
4,720.0	21.63	220.76	4,515.8	-861.5	-742.6	1,137.4	0.00	0.00	0.00
4,760.0	21.63	220.76	4,552.9	-872.7	-752.2	1,152.1	0.00	0.00	0.00
4,800.0	21.63	220.76	4,590.1	-883.8	-761.9	1,166.9	0.00	0.00	0.00
4,803.1	21.63	220.76	4,593.0	-884.7	-762.6	1,168.0	0.00	0.00	0.00
SUSSEX									
4,840.0	21.63	220.76	4,627.3	-895.0	-771.5	1,181.6	0.00	0.00	0.00
4,880.0	21.63	220.76	4,664.5	-906.2	-781.1	1,196.4	0.00	0.00	0.00
4,920.0	21.63	220.76	4,701.7	-917.4	-790.7	1,211.1	0.00	0.00	0.00
4,960.0	21.63	220.76	4,738.9	-928.5	-800.4	1,225.9	0.00	0.00	0.00
5,000.0	21.63	220.76	4,776.0	-939.7	-810.0	1,240.6	0.00	0.00	0.00
5,040.0	21.63	220.76	4,813.2	-950.9	-819.6	1,255.3	0.00	0.00	0.00
5,073.2	21.63	220.76	4,844.1	-960.1	-827.6	1,267.6	0.00	0.00	0.00
5,080.0	21.49	220.76	4,850.4	-962.0	-829.2	1,270.1	2.00	-2.00	0.00
5,120.0	20.69	220.76	4,887.7	-972.9	-838.6	1,284.5	2.00	-2.00	0.00
5,160.0	19.89	220.76	4,925.3	-983.4	-847.7	1,298.3	2.00	-2.00	0.00
5,200.0	19.09	220.76	4,963.0	-993.5	-856.4	1,311.7	2.00	-2.00	0.00
5,240.0	18.29	220.76	5,000.9	-1,003.2	-864.8	1,324.5	2.00	-2.00	0.00
5,280.0	17.49	220.76	5,038.9	-1,012.6	-872.8	1,336.8	2.00	-2.00	0.00
5,320.0	16.69	220.76	5,077.2	-1,021.5	-880.5	1,348.6	2.00	-2.00	0.00
5,360.0	15.89	220.76	5,115.5	-1,030.0	-887.8	1,359.8	2.00	-2.00	0.00
5,400.0	15.09	220.76	5,154.1	-1,038.0	-894.8	1,370.5	2.00	-2.00	0.00
5,440.0	14.29	220.76	5,192.8	-1,045.7	-901.4	1,380.6	2.00	-2.00	0.00
5,480.0	13.49	220.76	5,231.6	-1,053.0	-907.7	1,390.2	2.00	-2.00	0.00
5,520.0	12.69	220.76	5,270.6	-1,059.9	-913.6	1,399.3	2.00	-2.00	0.00
5,560.0	11.89	220.76	5,309.7	-1,066.3	-919.1	1,407.8	2.00	-2.00	0.00
5,600.0	11.09	220.76	5,348.9	-1,072.4	-924.3	1,415.8	2.00	-2.00	0.00
5,640.0	10.29	220.76	5,388.2	-1,078.0	-929.2	1,423.2	2.00	-2.00	0.00
5,680.0	9.49	220.76	5,427.6	-1,083.2	-933.7	1,430.1	2.00	-2.00	0.00
5,720.0	8.69	220.76	5,467.1	-1,088.0	-937.8	1,436.4	2.00	-2.00	0.00
5,760.0	7.89	220.76	5,506.6	-1,092.3	-941.6	1,442.1	2.00	-2.00	0.00
5,800.0	7.09	220.76	5,546.3	-1,096.3	-945.0	1,447.4	2.00	-2.00	0.00
5,840.0	6.29	220.76	5,586.0	-1,099.8	-948.0	1,452.0	2.00	-2.00	0.00
5,880.0	5.49	220.76	5,625.8	-1,102.9	-950.7	1,456.1	2.00	-2.00	0.00
5,920.0	4.69	220.76	5,665.7	-1,105.6	-953.0	1,459.7	2.00	-2.00	0.00
5,960.0	3.89	220.76	5,705.5	-1,107.9	-955.0	1,462.7	2.00	-2.00	0.00

Database:	Landmark	Local Co-ordinate Reference:	Well Walters 25-18
Company:	Anadarko, Weld County CO	TVD Reference:	WELL @ 4977.0ft (Original Well Elev)
Project:	SEC.18-T2N-R65W	MD Reference:	WELL @ 4977.0ft (Original Well Elev)
Site:	Walters 17-18 Pad Sec.18-T2N-R65W	North Reference:	True
Well:	Walters 25-18	Survey Calculation Method:	Minimum Curvature
Wellbore:	Wellbore #1		
Design:	Plan #1 (4-01-11)		

Planned Survey									
Measured Depth (ft)	Inclination (°)	Azimuth (°)	Vertical Depth (ft)	+N/-S (ft)	+E/-W (ft)	Vertical Section (ft)	Dogleg Rate (°/100ft)	Build Rate (°/100ft)	Turn Rate (°/100ft)
6,000.0	3.09	220.76	5,745.5	-1,109.7	-956.6	1,465.1	2.00	-2.00	0.00
6,040.0	2.29	220.76	5,785.4	-1,111.2	-957.8	1,467.0	2.00	-2.00	0.00
6,080.0	1.49	220.76	5,825.4	-1,112.2	-958.7	1,468.3	2.00	-2.00	0.00
6,120.0	0.69	220.76	5,865.4	-1,112.7	-959.2	1,469.1	2.00	-2.00	0.00
6,154.6	0.00	0.00	5,900.0	-1,112.9	-959.3	1,469.3	2.00	-2.00	0.00
TARGET BHL 2540'FNL, 2430'FEL									
6,160.0	0.00	0.00	5,905.4	-1,112.9	-959.3	1,469.3	0.00	0.00	0.00
6,200.0	0.00	0.00	5,945.4	-1,112.9	-959.3	1,469.3	0.00	0.00	0.00
6,240.0	0.00	0.00	5,985.4	-1,112.9	-959.3	1,469.3	0.00	0.00	0.00
6,280.0	0.00	0.00	6,025.4	-1,112.9	-959.3	1,469.3	0.00	0.00	0.00
6,320.0	0.00	0.00	6,065.4	-1,112.9	-959.3	1,469.3	0.00	0.00	0.00
6,360.0	0.00	0.00	6,105.4	-1,112.9	-959.3	1,469.3	0.00	0.00	0.00
6,400.0	0.00	0.00	6,145.4	-1,112.9	-959.3	1,469.3	0.00	0.00	0.00
6,440.0	0.00	0.00	6,185.4	-1,112.9	-959.3	1,469.3	0.00	0.00	0.00
6,480.0	0.00	0.00	6,225.4	-1,112.9	-959.3	1,469.3	0.00	0.00	0.00
6,520.0	0.00	0.00	6,265.4	-1,112.9	-959.3	1,469.3	0.00	0.00	0.00
6,560.0	0.00	0.00	6,305.4	-1,112.9	-959.3	1,469.3	0.00	0.00	0.00
6,600.0	0.00	0.00	6,345.4	-1,112.9	-959.3	1,469.3	0.00	0.00	0.00
6,640.0	0.00	0.00	6,385.4	-1,112.9	-959.3	1,469.3	0.00	0.00	0.00
6,680.0	0.00	0.00	6,425.4	-1,112.9	-959.3	1,469.3	0.00	0.00	0.00
6,720.0	0.00	0.00	6,465.4	-1,112.9	-959.3	1,469.3	0.00	0.00	0.00
6,760.0	0.00	0.00	6,505.4	-1,112.9	-959.3	1,469.3	0.00	0.00	0.00
6,800.0	0.00	0.00	6,545.4	-1,112.9	-959.3	1,469.3	0.00	0.00	0.00
6,840.0	0.00	0.00	6,585.4	-1,112.9	-959.3	1,469.3	0.00	0.00	0.00
6,880.0	0.00	0.00	6,625.4	-1,112.9	-959.3	1,469.3	0.00	0.00	0.00
6,920.0	0.00	0.00	6,665.4	-1,112.9	-959.3	1,469.3	0.00	0.00	0.00
6,960.0	0.00	0.00	6,705.4	-1,112.9	-959.3	1,469.3	0.00	0.00	0.00
7,000.0	0.00	0.00	6,745.4	-1,112.9	-959.3	1,469.3	0.00	0.00	0.00
7,040.0	0.00	0.00	6,785.4	-1,112.9	-959.3	1,469.3	0.00	0.00	0.00
7,080.0	0.00	0.00	6,825.4	-1,112.9	-959.3	1,469.3	0.00	0.00	0.00
7,120.0	0.00	0.00	6,865.4	-1,112.9	-959.3	1,469.3	0.00	0.00	0.00
7,160.0	0.00	0.00	6,905.4	-1,112.9	-959.3	1,469.3	0.00	0.00	0.00
7,200.0	0.00	0.00	6,945.4	-1,112.9	-959.3	1,469.3	0.00	0.00	0.00
7,240.0	0.00	0.00	6,985.4	-1,112.9	-959.3	1,469.3	0.00	0.00	0.00
7,280.0	0.00	0.00	7,025.4	-1,112.9	-959.3	1,469.3	0.00	0.00	0.00
7,320.0	0.00	0.00	7,065.4	-1,112.9	-959.3	1,469.3	0.00	0.00	0.00
7,327.6	0.00	0.00	7,073.0	-1,112.9	-959.3	1,469.3	0.00	0.00	0.00
NIORARA - TARGET CIRCLE 2540'FNL & 2430'FEL									
7,360.0	0.00	0.00	7,105.4	-1,112.9	-959.3	1,469.3	0.00	0.00	0.00
7,400.0	0.00	0.00	7,145.4	-1,112.9	-959.3	1,469.3	0.00	0.00	0.00
7,440.0	0.00	0.00	7,185.4	-1,112.9	-959.3	1,469.3	0.00	0.00	0.00
7,480.0	0.00	0.00	7,225.4	-1,112.9	-959.3	1,469.3	0.00	0.00	0.00
7,520.0	0.00	0.00	7,265.4	-1,112.9	-959.3	1,469.3	0.00	0.00	0.00
7,560.0	0.00	0.00	7,305.4	-1,112.9	-959.3	1,469.3	0.00	0.00	0.00
7,597.6	0.00	0.00	7,343.0	-1,112.9	-959.3	1,469.3	0.00	0.00	0.00
CODELL									
7,600.0	0.00	0.00	7,345.4	-1,112.9	-959.3	1,469.3	0.00	0.00	0.00
7,640.0	0.00	0.00	7,385.4	-1,112.9	-959.3	1,469.3	0.00	0.00	0.00
7,680.0	0.00	0.00	7,425.4	-1,112.9	-959.3	1,469.3	0.00	0.00	0.00
7,690.6	0.00	0.00	7,436.0	-1,112.9	-959.3	1,469.3	0.00	0.00	0.00
GREENHORN									
7,720.0	0.00	0.00	7,465.4	-1,112.9	-959.3	1,469.3	0.00	0.00	0.00
7,760.0	0.00	0.00	7,505.4	-1,112.9	-959.3	1,469.3	0.00	0.00	0.00

Database:	Landmark	Local Co-ordinate Reference:	Well Walters 25-18
Company:	Anadarko, Weld County CO	TVD Reference:	WELL @ 4977.0ft (Original Well Elev)
Project:	SEC.18-T2N-R65W	MD Reference:	WELL @ 4977.0ft (Original Well Elev)
Site:	Walters 17-18 Pad Sec.18-T2N-R65W	North Reference:	True
Well:	Walters 25-18	Survey Calculation Method:	Minimum Curvature
Wellbore:	Wellbore #1		
Design:	Plan #1 (4-01-11)		

Planned Survey									
Measured Depth (ft)	Inclination (°)	Azimuth (°)	Vertical Depth (ft)	+N/-S (ft)	+E/-W (ft)	Vertical Section (ft)	Dogleg Rate (°/100ft)	Build Rate (°/100ft)	Turn Rate (°/100ft)
7,800.0	0.00	0.00	7,545.4	-1,112.9	-959.3	1,469.3	0.00	0.00	0.00
7,840.0	0.00	0.00	7,585.4	-1,112.9	-959.3	1,469.3	0.00	0.00	0.00
7,880.0	0.00	0.00	7,625.4	-1,112.9	-959.3	1,469.3	0.00	0.00	0.00
7,920.0	0.00	0.00	7,665.4	-1,112.9	-959.3	1,469.3	0.00	0.00	0.00
7,960.0	0.00	0.00	7,705.4	-1,112.9	-959.3	1,469.3	0.00	0.00	0.00
8,000.0	0.00	0.00	7,745.4	-1,112.9	-959.3	1,469.3	0.00	0.00	0.00
8,040.0	0.00	0.00	7,785.4	-1,112.9	-959.3	1,469.3	0.00	0.00	0.00
8,052.6	0.00	0.00	7,798.0	-1,112.9	-959.3	1,469.3	0.00	0.00	0.00
J-SAND									
8,080.0	0.00	0.00	7,825.4	-1,112.9	-959.3	1,469.3	0.00	0.00	0.00
8,120.0	0.00	0.00	7,865.4	-1,112.9	-959.3	1,469.3	0.00	0.00	0.00
8,160.0	0.00	0.00	7,905.4	-1,112.9	-959.3	1,469.3	0.00	0.00	0.00
8,200.0	0.00	0.00	7,945.4	-1,112.9	-959.3	1,469.3	0.00	0.00	0.00
8,202.6	0.00	0.00	7,948.0	-1,112.9	-959.3	1,469.3	0.00	0.00	0.00
HARD LINES 130'S & 261'W OF BHL									

Targets									
Target Name	Dip Angle (°)	Dip Dir. (°)	TVD (ft)	+N/-S (ft)	+E/-W (ft)	Northing (ft)	Easting (ft)	Latitude	Longitude
- hit/miss target									
- Shape									
3616' MD = 126' Radi	0.00	0.00	3,599.0	-749.0	-316.5	1,294,830.48	3,222,614.29	40.139960	-104.703740
- plan misses target center by 249.3ft at 3733.8ft MD (3599.0 TVD, -586.2 N, -505.3 E)									
- Circle (radius 126.0)									
HARD LINES 130'S &	0.00	0.00	7,948.0	-1,242.9	-1,220.3	1,294,328.49	3,221,715.01	40.138604	-104.706973
- plan misses target center by 291.6ft at 8202.6ft MD (7948.0 TVD, -1112.9 N, -959.3 E)									
- Polygon									
Point 1			7,948.0	0.0	0.0	1,294,328.49	3,221,715.01		
Point 2			7,948.0	0.0	400.0	1,294,332.09	3,222,114.97		
Point 3			7,948.0	0.0	0.0	1,294,328.49	3,221,715.01		
Point 4			7,948.0	300.0	0.0	1,294,628.47	3,221,712.31		
TARGET BHL 2540'F	0.00	0.00	5,900.0	-1,112.9	-959.3	1,294,460.83	3,221,974.82	40.138961	-104.706039
- plan hits target center									
- Point									
TARGET CIRCLE 254	0.00	0.00	7,073.0	-1,112.9	-959.3	1,294,460.83	3,221,974.82	40.138961	-104.706039
- plan hits target center									
- Circle (radius 50.0)									

Casing Points					
Measured Depth (ft)	Vertical Depth (ft)	Name	Casing Diameter (")	Hole Diameter (")	
900.0	900.0	8 5/8"	8-5/8	12-1/4	

Database:	Landmark	Local Co-ordinate Reference:	Well Walters 25-18
Company:	Anadarko, Weld County CO	TVD Reference:	WELL @ 4977.0ft (Original Well Elev)
Project:	SEC.18-T2N-R65W	MD Reference:	WELL @ 4977.0ft (Original Well Elev)
Site:	Walters 17-18 Pad Sec.18-T2N-R65W	North Reference:	True
Well:	Walters 25-18	Survey Calculation Method:	Minimum Curvature
Wellbore:	Wellbore #1		
Design:	Plan #1 (4-01-11)		

Formations						
	Measured Depth (ft)	Vertical Depth (ft)	Name	Lithology	Dip (°)	Dip Direction (°)
	4,232.9	4,063.0	PARKMAN		0.00	
	4,803.1	4,593.0	SUSSEX		0.00	
	7,327.6	7,073.0	NIOBRARA		0.00	
	7,597.6	7,343.0	CODELL		0.00	
	7,690.6	7,436.0	GREENHORN		0.00	
	8,052.6	7,798.0	J-SAND		0.00	



Directional

Anadarko, Weld County CO

SEC.18-T2N-R65W

Walters 17-18 Pad Sec.18-T2N-R65W

Walters 25-18

Wellbore #1

Plan #1 (4-01-11)

Anticollision Report

08 April, 2011



Company:	Anadarko, Weld County CO	Local Co-ordinate Reference:	Well Walters 25-18
Project:	SEC.18-T2N-R65W	TVD Reference:	WELL @ 4977.0ft (Original Well Elev)
Reference Site:	Walters 17-18 Pad Sec.18-T2N-R65W	MD Reference:	WELL @ 4977.0ft (Original Well Elev)
Site Error:	0.0ft	North Reference:	True
Reference Well:	Walters 25-18	Survey Calculation Method:	Minimum Curvature
Well Error:	0.0ft	Output errors are at	2.00 sigma
Reference Wellbore	Wellbore #1	Database:	Landmark
Reference Design:	Plan #1 (4-01-11)	Offset TVD Reference:	Offset Datum

Reference	Plan #1 (4-01-11)		
Filter type:	NO GLOBAL FILTER: Using user defined selection & filtering criteria		
Interpolation Method:	Stations	Error Model:	ISCWSA
Depth Range:	Unlimited	Scan Method:	Closest Approach 3D
Results Limited by:	Maximum center-center distance of 10,000.0ft	Error Surface:	Elliptical Conic
Warning Levels Evaluated at:	2.00 Sigma		

Survey Tool Program	Date 4/8/2011			
From (ft)	To (ft)	Survey (Wellbore)	Tool Name	Description
0.0	8,202.6	Plan #1 (4-01-11) (Wellbore #1)	MWD	MWD - Standard

Summary						
Site Name	Reference Measured Depth (ft)	Offset Measured Depth (ft)	Distance Between Centres (ft)	Distance Between Ellipses (ft)	Separation Factor	Warning
Offset Well - Wellbore - Design						
Walters 17-18 Pad Sec.18-T2N-R65W						
Seaton #7-18 (Exist.) - Wellbore #1 - Design #1	3,734.0	3,616.2	249.3	224.3	9.956	CC, ES
Seaton #7-18 (Exist.) - Wellbore #1 - Design #1	3,900.0	3,770.5	256.7	230.4	9.763	SF
Walters 21-18 - Wellbore #1 - Plan #1 (4-01-11)	300.0	300.0	9.8	8.7	8.756	CC
Walters 21-18 - Wellbore #1 - Plan #1 (4-01-11)	400.0	399.9	10.2	8.6	6.519	ES
Walters 21-18 - Wellbore #1 - Plan #1 (4-01-11)	500.0	499.6	12.7	10.7	6.333	SF

Offset Design		Walters 17-18 Pad Sec.18-T2N-R65W - Seaton #7-18 (Exist.) - Wellbore #1 - Design #1										Offset Site Error:		0.0 ft		
Survey Program: 0-MWVD														Offset Well Error:		0.0 ft
Reference		Offset		Semi Major Axis			Distance							Warning		
Measured Depth (ft)	Vertical Depth (ft)	Measured Depth (ft)	Vertical Depth (ft)	Reference (ft)	Offset (ft)	Highside Toolface (°)	Offset Wellbore Centre +N/-S (ft)	+E/-W (ft)	Between Centres (ft)	Between Ellipses (ft)	Minimum Separation (ft)	Separation Factor				
0.0	0.0	17.0	17.0	0.0	0.0	-157.09	-749.0	-316.5	813.1	813.1	0.02	N/A				
100.0	100.0	117.0	117.0	0.1	0.2	-157.09	-749.0	-316.5	813.1	812.9	0.26	3,091.987				
200.0	200.0	217.0	217.0	0.3	0.4	-157.09	-749.0	-316.5	813.1	812.4	0.71	1,141.206				
300.0	300.0	317.0	317.0	0.6	0.6	-157.09	-749.0	-316.5	813.1	812.0	1.16	699.734				
400.0	400.0	417.0	417.0	0.8	0.8	-157.09	-749.0	-316.5	813.1	811.5	1.61	504.550				
500.0	500.0	517.0	517.0	1.0	1.0	-157.09	-749.0	-316.5	813.1	811.1	2.06	394.506				
600.0	600.0	617.0	617.0	1.2	1.3	-157.09	-749.0	-316.5	813.1	810.6	2.51	323.870				
700.0	700.0	717.0	717.0	1.5	1.5	-157.09	-749.0	-316.5	813.1	810.2	2.96	274.687				
800.0	800.0	817.0	817.0	1.7	1.7	-157.09	-749.0	-316.5	813.1	809.7	3.41	238.472				
900.0	900.0	917.0	917.0	1.9	1.9	-157.09	-749.0	-316.5	813.1	809.3	3.86	210.694				
1,000.0	1,000.0	1,017.0	1,017.0	2.1	2.2	-157.09	-749.0	-316.5	813.1	808.8	4.31	188.713				
1,100.0	1,100.0	1,117.0	1,117.0	2.4	2.4	-157.09	-749.0	-316.5	813.1	808.4	4.76	170.884				
1,200.0	1,200.0	1,217.0	1,217.0	2.6	2.6	-17.90	-749.0	-316.5	811.5	806.3	5.18	156.589				
1,300.0	1,299.8	1,316.8	1,316.8	2.7	2.8	-18.05	-749.0	-316.5	806.5	800.9	5.58	144.442				
1,400.0	1,399.5	1,416.5	1,416.5	2.9	3.1	-18.29	-749.0	-316.5	798.2	792.2	5.99	133.319				
1,500.0	1,498.7	1,515.7	1,515.7	3.2	3.3	-18.65	-749.0	-316.5	786.6	780.2	6.39	123.052				
1,600.0	1,597.5	1,614.5	1,614.5	3.4	3.5	-19.11	-749.0	-316.5	771.8	765.0	6.80	113.492				
1,700.0	1,695.6	1,712.6	1,712.6	3.7	3.7	-19.71	-749.0	-316.5	753.8	746.6	7.21	104.510				
1,800.0	1,793.1	1,810.1	1,810.1	4.1	4.0	-20.45	-749.0	-316.5	732.6	725.0	7.63	95.998				
1,900.0	1,889.6	1,906.6	1,906.6	4.5	4.2	-21.36	-749.0	-316.5	708.3	700.2	8.06	87.869				
2,000.0	1,985.3	2,002.3	2,002.3	4.9	4.4	-22.47	-749.0	-316.5	681.0	672.5	8.51	80.051				
2,100.0	2,079.8	2,096.8	2,096.8	5.5	4.6	-23.81	-749.0	-316.5	650.8	641.9	8.98	72.484				

CC - Min centre to center distance or convergent point, SF - min separation factor, ES - min ellipse separation

Company:	Anadarko, Weld County CO	Local Co-ordinate Reference:	Well Walters 25-18
Project:	SEC.18-T2N-R65W	TVD Reference:	WELL @ 4977.0ft (Original Well Elev)
Reference Site:	Walters 17-18 Pad Sec.18-T2N-R65W	MD Reference:	WELL @ 4977.0ft (Original Well Elev)
Site Error:	0.0ft	North Reference:	True
Reference Well:	Walters 25-18	Survey Calculation Method:	Minimum Curvature
Well Error:	0.0ft	Output errors are at	2.00 sigma
Reference Wellbore	Wellbore #1	Database:	Landmark
Reference Design:	Plan #1 (4-01-11)	Offset TVD Reference:	Offset Datum

Offset Design Walters 17-18 Pad Sec.18-T2N-R65W - Seaton #7-18 (Exist.) - Wellbore #1 - Design #1												Offset Site Error:	0.0ft
Survey Program: 0-MWD												Offset Well Error:	0.0ft
Reference		Offset		Semi Major Axis			Distance						Warning
Measured Depth (ft)	Vertical Depth (ft)	Measured Depth (ft)	Vertical Depth (ft)	Reference (ft)	Offset (ft)	Highside Toolface (°)	Offset Wellbore Centre +N/-S (ft)	+E/-W (ft)	Between Centres (ft)	Between Ellipses (ft)	Minimum Separation (ft)	Separation Factor	
2,181.4	2,155.9	2,172.9	2,172.9	5.9	4.8	-25.11	-749.0	-316.5	624.2	614.8	9.39	66.477	
2,200.0	2,173.2	2,190.2	2,190.2	6.1	4.8	-25.37	-749.0	-316.5	617.9	608.4	9.50	65.059	
2,300.0	2,266.2	2,283.2	2,283.2	6.7	5.0	-26.90	-749.0	-316.5	584.4	574.3	10.10	57.836	
2,400.0	2,359.1	2,376.1	2,376.1	7.4	5.2	-28.61	-749.0	-316.5	551.3	540.5	10.75	51.277	
2,500.0	2,452.1	2,469.1	2,469.1	8.1	5.4	-30.52	-749.0	-316.5	518.7	507.2	11.44	45.326	
2,600.0	2,545.0	2,562.0	2,562.0	8.8	5.6	-32.68	-749.0	-316.5	486.7	474.5	12.19	39.934	
2,700.0	2,638.0	2,655.0	2,655.0	9.5	5.9	-35.13	-749.0	-316.5	455.4	442.4	12.99	35.058	
2,800.0	2,730.9	2,747.9	2,747.9	10.2	6.1	-37.92	-749.0	-316.5	425.0	411.2	13.86	30.662	
2,900.0	2,823.9	2,840.9	2,840.9	10.9	6.3	-41.10	-749.0	-316.5	395.8	381.0	14.81	26.719	
3,000.0	2,916.9	2,933.9	2,933.9	11.6	6.5	-44.75	-749.0	-316.5	367.9	352.0	15.85	23.209	
3,100.0	3,009.8	3,026.8	3,026.8	12.3	6.7	-48.93	-749.0	-316.5	341.7	324.7	16.98	20.118	
3,200.0	3,102.8	3,119.8	3,119.8	13.1	6.9	-53.72	-749.0	-316.5	317.6	299.4	18.21	17.439	
3,300.0	3,195.7	3,212.7	3,212.7	13.8	7.1	-59.18	-749.0	-316.5	296.2	276.7	19.53	15.169	
3,400.0	3,288.7	3,305.7	3,305.7	14.5	7.3	-65.34	-749.0	-316.5	278.0	257.1	20.89	13.307	
3,500.0	3,381.7	3,398.7	3,398.7	15.3	7.5	-72.17	-749.0	-316.5	263.8	241.5	22.26	11.849	
3,600.0	3,474.6	3,491.6	3,491.6	16.0	7.7	-79.56	-749.0	-316.5	254.1	230.6	23.56	10.788	
3,700.0	3,567.6	3,584.6	3,584.6	16.8	7.9	-87.33	-749.0	-316.5	249.6	224.9	24.70	10.106	
3,734.0	3,599.2	3,616.2	3,616.2	17.0	8.0	-90.00	-749.0	-316.5	249.3	224.3	25.04	9.956 CC, ES	
3,800.0	3,660.5	3,677.5	3,677.5	17.5	8.2	-95.18	-749.0	-316.5	250.5	224.9	25.62	9.777	
3,900.0	3,753.5	3,770.5	3,770.5	18.3	8.4	-102.85	-749.0	-316.5	256.7	230.4	26.29	9.763 SF	
4,000.0	3,846.5	3,863.5	3,863.5	19.0	8.6	-110.08	-749.0	-316.5	267.9	241.1	26.73	10.021	
4,100.0	3,939.4	3,956.4	3,956.4	19.8	8.8	-116.71	-749.0	-316.5	283.5	256.5	26.99	10.503	
4,200.0	4,032.4	4,049.4	4,049.4	20.5	9.0	-122.64	-749.0	-316.5	302.7	275.6	27.12	11.163	
4,300.0	4,125.3	4,142.3	4,142.3	21.2	9.2	-127.88	-749.0	-316.5	325.1	297.9	27.19	11.957	
4,400.0	4,218.3	4,235.3	4,235.3	22.0	9.4	-132.47	-749.0	-316.5	349.9	322.6	27.23	12.849	
4,500.0	4,311.3	4,328.3	4,328.3	22.7	9.6	-136.47	-749.0	-316.5	376.6	349.4	27.28	13.807	
4,600.0	4,404.2	4,421.2	4,421.2	23.5	9.8	-139.97	-749.0	-316.5	405.0	377.7	27.35	14.808	
4,700.0	4,497.2	4,514.2	4,514.2	24.3	10.0	-143.01	-749.0	-316.5	434.7	407.2	27.46	15.831	
4,800.0	4,590.1	4,607.1	4,607.1	25.0	10.2	-145.69	-749.0	-316.5	465.3	437.7	27.60	16.862	
4,900.0	4,683.1	4,700.1	4,700.1	25.8	10.5	-148.04	-749.0	-316.5	496.8	469.1	27.77	17.889	
5,000.0	4,776.0	4,793.0	4,793.0	26.5	10.7	-150.11	-749.0	-316.5	529.1	501.1	27.99	18.904	
5,073.2	4,844.1	4,861.1	4,861.1	27.1	10.8	-151.49	-749.0	-316.5	553.0	524.8	28.16	19.636	
5,100.0	4,869.1	4,886.1	4,886.1	27.2	10.9	-152.04	-749.0	-316.5	561.7	533.5	28.23	19.901	
5,200.0	4,963.0	4,980.0	4,980.0	27.8	11.1	-153.87	-749.0	-316.5	592.7	564.2	28.46	20.827	
5,300.0	5,058.0	5,075.0	5,075.0	28.2	11.3	-155.37	-749.0	-316.5	621.0	592.3	28.74	21.611	
5,400.0	5,154.1	5,171.1	5,171.1	28.7	11.5	-156.59	-749.0	-316.5	646.5	617.5	29.04	22.261	
5,500.0	5,251.1	5,268.1	5,268.1	29.1	11.7	-157.60	-749.0	-316.5	669.0	639.7	29.36	22.785	
5,600.0	5,348.9	5,365.9	5,365.9	29.4	11.9	-158.41	-749.0	-316.5	688.5	658.8	29.69	23.191	
5,700.0	5,447.3	5,464.3	5,464.3	29.7	12.2	-159.05	-749.0	-316.5	704.9	674.9	30.01	23.488	
5,800.0	5,546.3	5,563.3	5,563.3	30.0	12.4	-159.54	-749.0	-316.5	718.1	687.7	30.32	23.681	
5,900.0	5,645.7	5,662.7	5,662.7	30.2	12.6	-159.90	-749.0	-316.5	728.0	697.4	30.62	23.776	
6,000.0	5,745.5	5,762.5	5,762.5	30.4	12.8	-160.14	-749.0	-316.5	734.7	703.8	30.90	23.776	
6,100.0	5,845.4	5,862.4	5,862.4	30.5	13.1	-160.26	-749.0	-316.5	738.2	707.0	31.16	23.687	
6,154.6	5,900.0	5,917.0	5,917.0	30.6	13.2	60.48	-749.0	-316.5	738.7	707.3	31.30	23.597	
6,200.0	5,945.4	5,962.4	5,962.4	30.6	13.3	60.48	-749.0	-316.5	738.7	707.2	31.47	23.474	
6,300.0	6,045.4	6,062.4	6,062.4	30.7	13.5	60.48	-749.0	-316.5	738.7	706.8	31.82	23.211	
6,400.0	6,145.4	6,162.4	6,162.4	30.8	13.7	60.48	-749.0	-316.5	738.7	706.5	32.18	22.953	
6,500.0	6,245.4	6,262.4	6,262.4	30.8	14.0	60.48	-749.0	-316.5	738.7	706.1	32.54	22.699	
6,600.0	6,345.4	6,362.4	6,362.4	30.9	14.2	60.48	-749.0	-316.5	738.7	705.7	32.90	22.449	
6,700.0	6,445.4	6,462.4	6,462.4	31.0	14.4	60.48	-749.0	-316.5	738.7	705.4	33.27	22.204	
6,800.0	6,545.4	6,562.4	6,562.4	31.1	14.6	60.48	-749.0	-316.5	738.7	705.0	33.63	21.962	
6,900.0	6,645.4	6,662.4	6,662.4	31.2	14.9	60.48	-749.0	-316.5	738.7	704.7	34.00	21.726	

CC - Min centre to center distance or convergent point, SF - min separation factor, ES - min ellipse separation

Company:	Anadarko, Weld County CO	Local Co-ordinate Reference:	Well Walters 25-18
Project:	SEC.18-T2N-R65W	TVD Reference:	WELL @ 4977.0ft (Original Well Elev)
Reference Site:	Walters 17-18 Pad Sec.18-T2N-R65W	MD Reference:	WELL @ 4977.0ft (Original Well Elev)
Site Error:	0.0ft	North Reference:	True
Reference Well:	Walters 25-18	Survey Calculation Method:	Minimum Curvature
Well Error:	0.0ft	Output errors are at	2.00 sigma
Reference Wellbore	Wellbore #1	Database:	Landmark
Reference Design:	Plan #1 (4-01-11)	Offset TVD Reference:	Offset Datum

Offset Design Walters 17-18 Pad Sec.18-T2N-R65W - Seaton #7-18 (Exist.) - Wellbore #1 - Design #1												Offset Site Error:	0.0 ft
Survey Program: 0-MWD												Offset Well Error:	0.0 ft
Reference		Offset		Semi Major Axis			Distance						
Measured Depth (ft)	Vertical Depth (ft)	Measured Depth (ft)	Vertical Depth (ft)	Reference (ft)	Offset (ft)	Highside Toolface (°)	Offset Wellbore Centre +N/-S (ft)	+E/-W (ft)	Between Centres (ft)	Between Ellipses (ft)	Minimum Separation (ft)	Separation Factor	Warning
7,000.0	6,745.4	6,762.4	6,762.4	31.3	15.1	60.48	-749.0	-316.5	738.7	704.3	34.37	21.493	
7,100.0	6,845.4	6,862.4	6,862.4	31.4	15.3	60.48	-749.0	-316.5	738.7	703.9	34.74	21.264	
7,200.0	6,945.4	6,962.4	6,962.4	31.5	15.5	60.48	-749.0	-316.5	738.7	703.5	35.11	21.039	
7,300.0	7,045.4	7,062.4	7,062.4	31.6	15.8	60.48	-749.0	-316.5	738.7	703.2	35.48	20.818	
7,400.0	7,145.4	7,162.4	7,162.4	31.7	16.0	60.48	-749.0	-316.5	738.7	702.8	35.86	20.600	
7,500.0	7,245.4	7,262.4	7,262.4	31.8	16.2	60.48	-749.0	-316.5	738.7	702.4	36.23	20.387	
7,600.0	7,345.4	7,362.4	7,362.4	31.9	16.4	60.48	-749.0	-316.5	738.7	702.0	36.61	20.177	
7,700.0	7,445.4	7,462.4	7,462.4	32.0	16.7	60.48	-749.0	-316.5	738.7	701.7	36.99	19.970	
7,759.6	7,505.0	7,522.0	7,522.0	32.0	16.8	60.48	-749.0	-316.5	738.7	701.4	37.21	19.849	
7,800.0	7,545.4	7,545.0	7,545.0	32.1	16.8	60.48	-749.0	-316.5	738.9	701.5	37.33	19.794	
7,900.0	7,645.4	7,545.0	7,545.0	32.2	16.8	60.48	-749.0	-316.5	747.9	710.4	37.48	19.953	
8,000.0	7,745.4	7,545.0	7,545.0	32.3	16.8	60.48	-749.0	-316.5	770.0	732.3	37.64	20.455	
8,100.0	7,845.4	7,545.0	7,545.0	32.4	16.8	60.48	-749.0	-316.5	804.0	766.2	37.80	21.268	
8,202.6	7,948.0	7,545.0	7,545.0	32.5	16.8	60.48	-749.0	-316.5	849.7	811.7	37.96	22.382	

Company:	Anadarko, Weld County CO	Local Co-ordinate Reference:	Well Walters 25-18
Project:	SEC.18-T2N-R65W	TVD Reference:	WELL @ 4977.0ft (Original Well Elev)
Reference Site:	Walters 17-18 Pad Sec.18-T2N-R65W	MD Reference:	WELL @ 4977.0ft (Original Well Elev)
Site Error:	0.0ft	North Reference:	True
Reference Well:	Walters 25-18	Survey Calculation Method:	Minimum Curvature
Well Error:	0.0ft	Output errors are at	2.00 sigma
Reference Wellbore	Wellbore #1	Database:	Landmark
Reference Design:	Plan #1 (4-01-11)	Offset TVD Reference:	Offset Datum

Offset Design Walters 17-18 Pad Sec.18-T2N-R65W - Walters 21-18 - Wellbore #1 - Plan #1 (4-01-11)													Offset Site Error:	0.0ft
Survey Program: 0-MWD													Offset Well Error:	0.0ft
Measured Depth (ft)	Vertical Depth (ft)	Measured Depth (ft)	Vertical Depth (ft)	Reference (ft)	Offset (ft)	Highside Toolface (°)	Offset Wellbore Centre +N/-S (ft)	+E/-W (ft)	Between Centres (ft)	Between Ellipses (ft)	Minimum Separation (ft)	Separation Factor	Warning	
0.0	0.0	0.0	0.0	0.0	0.0	-1.63	9.8	-0.3	9.8	9.8	0.00	N/A		
100.0	100.0	100.0	100.0	0.1	0.1	-1.63	9.8	-0.3	9.8	9.6	0.22	43.779		
200.0	200.0	200.0	200.0	0.3	0.3	-1.63	9.8	-0.3	9.8	9.2	0.67	14.593		
300.0	300.0	300.0	300.0	0.6	0.6	-1.63	9.8	-0.3	9.8	8.7	1.12	8.756 CC		
400.0	400.0	399.9	399.9	0.8	0.8	-11.40	10.0	-2.0	10.2	8.6	1.56	6.519 ES		
500.0	500.0	499.6	499.4	1.0	1.0	-34.55	10.5	-7.2	12.7	10.7	2.01	6.333 SF		
600.0	600.0	598.8	598.2	1.2	1.2	-54.57	11.2	-15.8	19.5	17.0	2.46	7.914		
700.0	700.0	697.3	696.0	1.5	1.5	-66.04	12.3	-27.7	30.5	27.6	2.92	10.462		
800.0	800.0	794.8	792.4	1.7	1.8	-72.28	13.7	-42.7	45.5	42.1	3.40	13.384		
900.0	900.0	891.2	887.0	1.9	2.2	-75.90	15.3	-60.8	64.0	60.1	3.90	16.403		
1,000.0	1,000.0	987.6	981.1	2.1	2.6	-78.14	17.2	-81.7	85.6	81.2	4.44	19.301		
1,100.0	1,100.0	1,085.1	1,076.2	2.4	3.0	-79.53	19.1	-103.3	107.7	102.7	4.98	21.640		
1,200.0	1,200.0	1,182.8	1,171.5	2.6	3.5	59.11	21.0	-124.9	128.9	123.7	5.23	24.662		
1,300.0	1,299.8	1,280.9	1,267.1	2.7	3.9	59.78	23.0	-146.6	148.5	142.8	5.66	26.220		
1,400.0	1,399.5	1,379.1	1,362.9	2.9	4.4	61.30	24.9	-168.3	166.4	160.2	6.12	27.178		
1,500.0	1,498.7	1,477.5	1,458.8	3.2	4.9	63.46	26.9	-190.0	182.8	176.2	6.62	27.622		
1,600.0	1,597.5	1,575.8	1,554.6	3.4	5.3	66.15	28.8	-211.8	198.2	191.0	7.17	27.639		
1,700.0	1,695.6	1,674.0	1,650.3	3.7	5.8	69.29	30.8	-233.5	212.8	205.0	7.79	27.296		
1,800.0	1,793.1	1,771.9	1,745.8	4.1	6.3	72.80	32.7	-255.1	227.0	218.5	8.51	26.670		
1,900.0	1,889.6	1,869.4	1,840.9	4.5	6.7	76.64	34.7	-276.7	241.2	231.9	9.33	25.851		
2,000.0	1,985.3	1,966.4	1,935.5	4.9	7.2	80.72	36.6	-298.2	256.1	245.8	10.27	24.944		
2,100.0	2,079.8	2,062.8	2,029.5	5.5	7.7	84.98	38.5	-319.5	271.9	260.6	11.31	24.046		
2,181.4	2,155.9	2,140.8	2,105.5	5.9	8.0	88.53	40.1	-336.7	286.0	273.7	12.23	23.383		
2,200.0	2,173.2	2,158.5	2,122.8	6.1	8.1	89.40	40.4	-340.6	289.3	276.9	12.45	23.242		
2,300.0	2,266.2	2,253.9	2,215.8	6.7	8.6	93.76	42.3	-361.7	308.6	294.9	13.64	22.627		
2,400.0	2,359.1	2,349.3	2,308.8	7.4	9.1	97.62	44.2	-382.8	329.4	314.6	14.83	22.220		
2,500.0	2,452.1	2,444.7	2,401.8	8.1	9.5	101.02	46.1	-403.9	351.6	335.6	16.00	21.972		
2,600.0	2,545.0	2,540.1	2,494.9	8.8	10.0	104.03	48.0	-425.0	374.9	357.7	17.16	21.841		
2,700.0	2,638.0	2,635.5	2,587.9	9.5	10.4	106.69	49.9	-446.1	399.0	380.7	18.31	21.797		
2,800.0	2,730.9	2,730.9	2,680.9	10.2	10.9	109.05	51.8	-467.2	423.9	404.5	19.43	21.816		
2,900.0	2,823.9	2,826.3	2,773.9	10.9	11.4	111.16	53.7	-488.3	449.4	428.9	20.54	21.880		
3,000.0	2,916.9	2,921.7	2,867.0	11.6	11.8	113.04	55.6	-509.4	475.4	453.8	21.63	21.977		
3,100.0	3,009.8	3,017.1	2,960.0	12.3	12.3	114.73	57.5	-530.5	501.9	479.2	22.71	22.096		
3,200.0	3,102.8	3,112.6	3,053.0	13.1	12.8	116.25	59.4	-551.6	528.8	505.0	23.78	22.231		
3,300.0	3,195.7	3,208.0	3,146.0	13.8	13.2	117.63	61.3	-572.7	555.9	531.1	24.84	22.377		
3,400.0	3,288.7	3,303.4	3,239.1	14.5	13.7	118.88	63.2	-593.8	583.4	557.5	25.89	22.529		
3,500.0	3,381.7	3,398.8	3,332.1	15.3	14.2	120.02	65.1	-614.9	611.0	584.1	26.94	22.684		
3,600.0	3,474.6	3,494.2	3,425.1	16.0	14.6	121.06	67.0	-636.0	638.9	610.9	27.97	22.841		
3,700.0	3,567.6	3,589.6	3,518.1	16.8	15.1	122.01	68.9	-657.1	667.0	638.0	29.00	22.998		
3,800.0	3,660.5	3,685.0	3,611.2	17.5	15.5	122.89	70.8	-678.2	695.2	665.2	30.03	23.153		
3,900.0	3,753.5	3,780.4	3,704.2	18.3	16.0	123.70	72.7	-699.3	723.5	692.5	31.05	23.306		
4,000.0	3,846.5	3,875.8	3,797.2	19.0	16.5	124.45	74.6	-720.4	752.0	720.0	32.06	23.456		
4,100.0	3,939.4	3,971.2	3,890.2	19.8	16.9	125.15	76.5	-741.5	780.6	747.5	33.07	23.603		
4,200.0	4,032.4	4,066.6	3,983.3	20.5	17.4	125.79	78.3	-762.6	809.3	775.2	34.08	23.746		
4,300.0	4,125.3	4,162.0	4,076.3	21.2	17.9	126.40	80.2	-783.7	838.1	803.0	35.09	23.885		
4,400.0	4,218.3	4,257.4	4,169.3	22.0	18.3	126.96	82.1	-804.8	867.0	830.9	36.09	24.020		
4,500.0	4,311.3	4,352.8	4,262.3	22.7	18.8	127.48	84.0	-825.9	895.9	858.8	37.09	24.152		
4,600.0	4,404.2	4,448.2	4,355.4	23.5	19.3	127.98	85.9	-847.0	924.9	886.8	38.09	24.279		
4,700.0	4,497.2	4,543.6	4,448.4	24.3	19.7	128.44	87.8	-868.1	954.0	914.9	39.09	24.403		
4,800.0	4,590.1	4,639.0	4,541.4	25.0	20.2	128.88	89.7	-889.2	983.1	943.0	40.09	24.523		
4,900.0	4,683.1	4,734.5	4,634.4	25.8	20.7	129.29	91.6	-910.3	1,012.2	971.1	41.08	24.639		
5,000.0	4,776.0	4,829.9	4,727.5	26.5	21.1	129.68	93.5	-931.4	1,041.4	999.4	42.08	24.751		

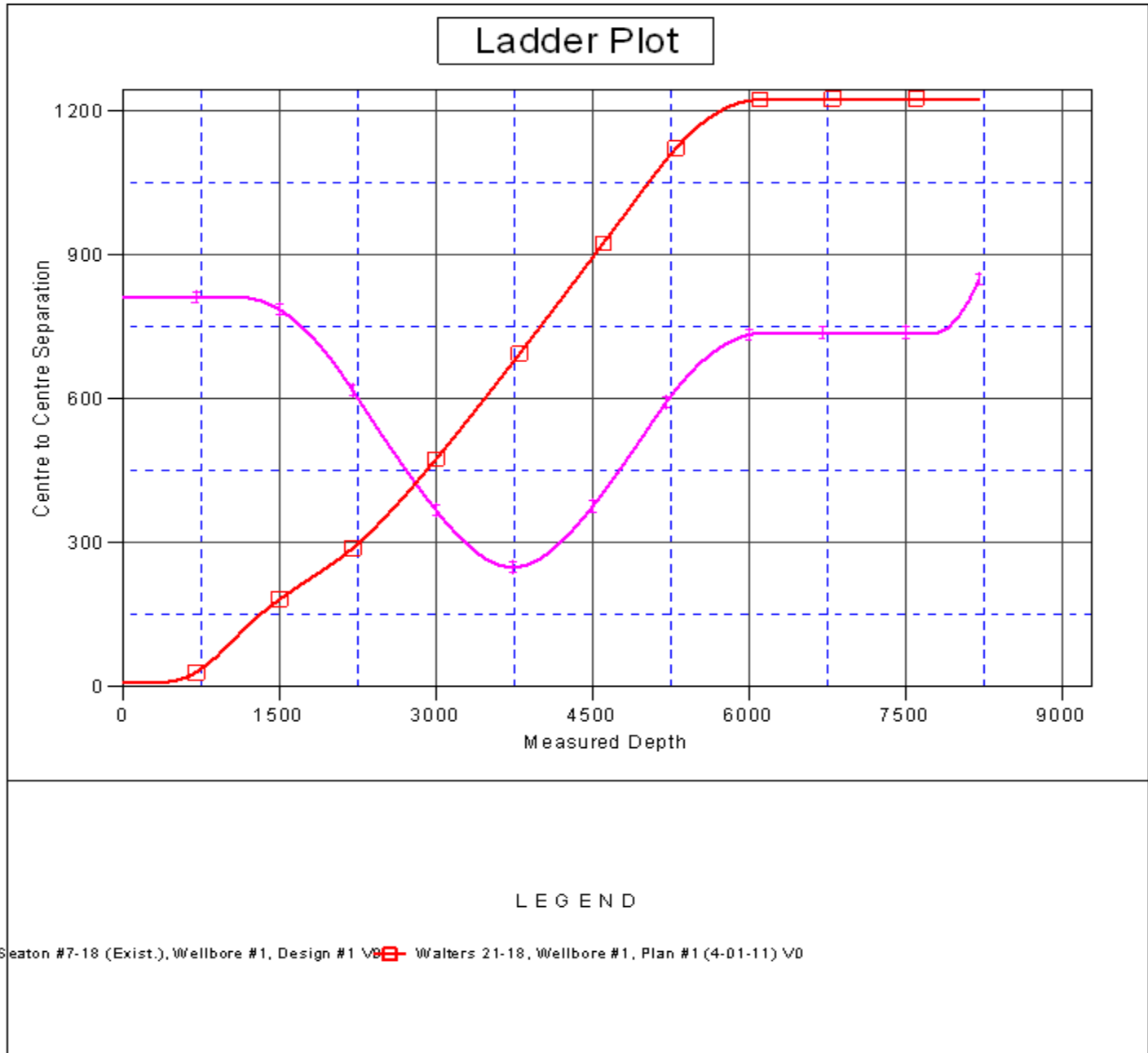
CC - Min centre to center distance or convergent point, SF - min separation factor, ES - min ellipse separation

Company:	Anadarko, Weld County CO	Local Co-ordinate Reference:	Well Walters 25-18
Project:	SEC.18-T2N-R65W	TVD Reference:	WELL @ 4977.0ft (Original Well Elev)
Reference Site:	Walters 17-18 Pad Sec.18-T2N-R65W	MD Reference:	WELL @ 4977.0ft (Original Well Elev)
Site Error:	0.0ft	North Reference:	True
Reference Well:	Walters 25-18	Survey Calculation Method:	Minimum Curvature
Well Error:	0.0ft	Output errors are at	2.00 sigma
Reference Wellbore	Wellbore #1	Database:	Landmark
Reference Design:	Plan #1 (4-01-11)	Offset TVD Reference:	Offset Datum

Offset Design Walters 17-18 Pad Sec.18-T2N-R65W - Walters 21-18 - Wellbore #1 - Plan #1 (4-01-11)												Offset Site Error:	0.0ft
Survey Program: 0-MWD												Offset Well Error:	0.0ft
Reference	Offset	Semi Major Axis		Distance									
Measured Depth (ft)	Vertical Depth (ft)	Measured Depth (ft)	Vertical Depth (ft)	Reference (ft)	Offset (ft)	Highside Toolface (°)	Offset Wellbore Centre +N/-S (ft)	+E/-W (ft)	Between Centres (ft)	Between Ellipses (ft)	Minimum Separation (ft)	Separation Factor	Warning
5,073.2	4,844.1	4,899.7	4,795.5	27.1	21.5	129.95	94.9	-946.8	1,062.8	1,020.0	42.80	24.831	
5,100.0	4,869.1	4,925.3	4,820.5	27.2	21.6	130.17	95.4	-952.5	1,070.6	1,027.5	43.07	24.859	
5,200.0	4,963.0	5,021.3	4,914.1	27.8	22.1	130.84	97.3	-973.7	1,098.2	1,054.2	43.98	24.971	
5,300.0	5,058.0	5,118.0	5,008.4	28.2	22.5	131.32	99.2	-995.1	1,123.7	1,078.8	44.89	25.033	
5,400.0	5,154.1	5,218.8	5,106.7	28.7	23.0	131.64	101.2	-1,017.0	1,146.8	1,101.0	45.75	25.066	
5,500.0	5,251.1	5,325.3	5,211.3	29.1	23.3	131.93	103.0	-1,037.1	1,167.1	1,120.6	46.47	25.114	
5,600.0	5,348.9	5,432.6	5,317.3	29.4	23.6	132.23	104.5	-1,053.3	1,184.3	1,137.2	47.09	25.148	
5,700.0	5,447.3	5,540.4	5,424.5	29.7	23.9	132.53	105.6	-1,065.7	1,198.5	1,150.9	47.61	25.170	
5,800.0	5,546.3	5,648.7	5,532.5	30.0	24.1	132.84	106.3	-1,074.0	1,209.6	1,161.6	48.03	25.182	
5,900.0	5,645.7	5,757.2	5,640.9	30.2	24.2	133.15	106.7	-1,078.3	1,217.6	1,169.3	48.35	25.184	
6,000.0	5,745.5	5,861.8	5,745.5	30.4	24.3	133.46	106.8	-1,078.9	1,222.6	1,174.1	48.58	25.169	
6,100.0	5,845.4	5,961.8	5,845.4	30.5	24.4	133.62	106.8	-1,078.9	1,225.2	1,176.4	48.77	25.119	
6,154.6	5,900.0	6,016.4	5,900.0	30.6	24.5	-5.60	106.8	-1,078.9	1,225.5	1,176.6	48.87	25.075	
6,200.0	5,945.4	6,061.8	5,945.4	30.6	24.5	-5.60	106.8	-1,078.9	1,225.5	1,176.5	48.97	25.025	
6,300.0	6,045.4	6,161.8	6,045.4	30.7	24.7	-5.60	106.8	-1,078.9	1,225.5	1,176.3	49.19	24.913	
6,400.0	6,145.4	6,261.8	6,145.4	30.8	24.8	-5.60	106.8	-1,078.9	1,225.5	1,176.1	49.41	24.802	
6,500.0	6,245.4	6,361.8	6,245.4	30.8	24.9	-5.60	106.8	-1,078.9	1,225.5	1,175.9	49.64	24.690	
6,600.0	6,345.4	6,461.8	6,345.4	30.9	25.0	-5.60	106.8	-1,078.9	1,225.5	1,175.7	49.86	24.577	
6,700.0	6,445.4	6,561.8	6,445.4	31.0	25.1	-5.60	106.8	-1,078.9	1,225.5	1,175.4	50.10	24.464	
6,800.0	6,545.4	6,661.8	6,545.4	31.1	25.3	-5.60	106.8	-1,078.9	1,225.5	1,175.2	50.33	24.350	
6,900.0	6,645.4	6,761.8	6,645.4	31.2	25.4	-5.60	106.8	-1,078.9	1,225.5	1,175.0	50.57	24.236	
7,000.0	6,745.4	6,861.8	6,745.4	31.3	25.5	-5.60	106.8	-1,078.9	1,225.5	1,174.7	50.80	24.122	
7,100.0	6,845.4	6,961.8	6,845.4	31.4	25.6	-5.60	106.8	-1,078.9	1,225.5	1,174.5	51.05	24.008	
7,200.0	6,945.4	7,061.8	6,945.4	31.5	25.8	-5.60	106.8	-1,078.9	1,225.5	1,174.2	51.29	23.893	
7,300.0	7,045.4	7,161.8	7,045.4	31.6	25.9	-5.60	106.8	-1,078.9	1,225.5	1,174.0	51.54	23.778	
7,400.0	7,145.4	7,261.8	7,145.4	31.7	26.0	-5.60	106.8	-1,078.9	1,225.5	1,173.7	51.79	23.663	
7,500.0	7,245.4	7,361.8	7,245.4	31.8	26.1	-5.60	106.8	-1,078.9	1,225.5	1,173.5	52.04	23.548	
7,600.0	7,345.4	7,461.8	7,345.4	31.9	26.3	-5.60	106.8	-1,078.9	1,225.5	1,173.2	52.30	23.433	
7,700.0	7,445.4	7,561.8	7,445.4	32.0	26.4	-5.60	106.8	-1,078.9	1,225.5	1,173.0	52.56	23.318	
7,800.0	7,545.4	7,661.8	7,545.4	32.1	26.5	-5.60	106.8	-1,078.9	1,225.5	1,172.7	52.82	23.203	
7,900.0	7,645.4	7,761.8	7,645.4	32.2	26.7	-5.60	106.8	-1,078.9	1,225.5	1,172.4	53.08	23.087	
8,000.0	7,745.4	7,861.8	7,745.4	32.3	26.8	-5.60	106.8	-1,078.9	1,225.5	1,172.2	53.35	22.972	
8,100.0	7,845.4	7,961.8	7,845.4	32.4	27.0	-5.60	106.8	-1,078.9	1,225.5	1,171.9	53.62	22.857	
8,202.6	7,948.0	8,064.4	7,948.0	32.5	27.1	-5.60	106.8	-1,078.9	1,225.5	1,171.6	53.89	22.739	

Company:	Anadarko, Weld County CO	Local Co-ordinate Reference:	Well Walters 25-18
Project:	SEC.18-T2N-R65W	TVD Reference:	WELL @ 4977.0ft (Original Well Elev)
Reference Site:	Walters 17-18 Pad Sec.18-T2N-R65W	MD Reference:	WELL @ 4977.0ft (Original Well Elev)
Site Error:	0.0ft	North Reference:	True
Reference Well:	Walters 25-18	Survey Calculation Method:	Minimum Curvature
Well Error:	0.0ft	Output errors are at	2.00 sigma
Reference Wellbore	Wellbore #1	Database:	Landmark
Reference Design:	Plan #1 (4-01-11)	Offset TVD Reference:	Offset Datum

Reference Depths are relative to WELL @ 4977.0ft (Original Well Elev) Coordinates are relative to: Walters 25-18
 Offset Depths are relative to Offset Datum
 Central Meridian is -105.500000 °
 Coordinate System is US State Plane 1983, Colorado Northern Zone
 Grid Convergence at Surface is: 0.52°



Company:	Anadarko, Weld County CO	Local Co-ordinate Reference:	Well Walters 25-18
Project:	SEC.18-T2N-R65W	TVD Reference:	WELL @ 4977.0ft (Original Well Elev)
Reference Site:	Walters 17-18 Pad Sec.18-T2N-R65W	MD Reference:	WELL @ 4977.0ft (Original Well Elev)
Site Error:	0.0ft	North Reference:	True
Reference Well:	Walters 25-18	Survey Calculation Method:	Minimum Curvature
Well Error:	0.0ft	Output errors are at	2.00 sigma
Reference Wellbore	Wellbore #1	Database:	Landmark
Reference Design:	Plan #1 (4-01-11)	Offset TVD Reference:	Offset Datum

Reference Depths are relative to WELL @ 4977.0ft (Original Well Elev) Coordinates are relative to: Walters 25-18
 Offset Depths are relative to Offset Datum Coordinate System is US State Plane 1983, Colorado Northern Zone
 Central Meridian is -105.500000 ° Grid Convergence at Surface is: 0.52°

