
OXY GRAND JUNCTION EBUSINESS

**CC 697-08-23A
GRAND VALLEY
Garfield County , Colorado**

Cement Surface Casing **19-Mar-2011**

Post Job Report

The Road to Excellence Starts with Safety

Sold To #: 344034	Ship To #: 2825567	Quote #:	Sales Order #: 7842148
Customer: OXY GRAND JUNCTION EBUSINESS	Customer Rep: VILLEGAS, ALEX		
Well Name: CC	Well #: 697-08-23A	API/UWI #: 05-045-18147	
Field: GRAND VALLEY	City (SAP):	County/Parish: Garfield	State: Colorado
Lat: N 39.542 deg. OR N 39 deg. 32 min. 30.923 secs.	Long: W 108.238 deg. OR W -109 deg. 45 min. 42.412 secs.		
Contractor: H&P Drilling	Rig/Platform Name/Num: H&P 353		
Job Purpose: Cement Surface Casing			
Well Type: Development Well	Job Type: Cement Surface Casing		
Sales Person: DUNNING, DUSTIN	Srvc Supervisor: MUHLESTEIN, RYAN	MBU ID Emp #: 453609	

Job Personnel

HES Emp Name	Exp Hrs	Emp #	HES Emp Name	Exp Hrs	Emp #	HES Emp Name	Exp Hrs	Emp #
BROWN, TRAVIS A	25	396848	JENKINS, DEMON Lashaun	25	457892	LOPEZ, GERALD Wayne	25	479828
LYNCH, JACK William	7	483039	MILLER, KEVIN Paul	7	443040	MUHLESTEIN, RYAN Herrick	25	453609
NICKLE, RYON	25	454759	ROSE, BENJAMIN Keith	25	487022	ZUMWALT, ORVILLE Raymond	25	398157

Equipment

HES Unit #	Distance-1 way	HES Unit #	Distance-1 way	HES Unit #	Distance-1 way	HES Unit #	Distance-1 way
10722398	60 mile	10867094	60 mile	10897925	60 mile	10938658	60 mile
10938665	60 mile	10969711	60 mile	10988978	60 mile	11139330	60 mile
11259884	60 mile	11360871	60 mile	11542767	60 mile	11583915	60 mile

Job Hours

Date	On Location Hours	Operating Hours	Date	On Location Hours	Operating Hours	Date	On Location Hours	Operating Hours
03/19/2011	19	12	03/20/2011	5	4			

TOTAL Total is the sum of each column separately

Job

Formation Name	Top	Bottom	Called Out	Date	Time	Time Zone
Formation Depth (MD)			On Location	18 - Mar - 2011	19:00	MST
Form Type		BHST	Job Started	19 - Mar - 2011	04:00	MST
Job depth MD	2730. ft	Job Depth TVD	Job Started	19 - Mar - 2011	14:29	MST
Water Depth		Wk Ht Above Floor	Job Completed	20 - Mar - 2011	03:44	MST
Perforation Depth (MD)	From	To	Departed Loc	20 - Mar - 2011	05:00	MST

Well Data

Description	New / Used	Max pressure psig	Size in	ID in	Weight lbm/ft	Thread	Grade	Top MD ft	Bottom MD ft	Top TVD ft	Bottom TVD ft
OPEN HOLE SECTION				14.75				.	2730.	.	2730.
SURFACE CASING	Unknown		9.625	8.921	36.		J-55	.	2408.	.	2408.

Sales/Rental/3rd Party (HES)

Description	Qty	Qty uom	Depth	Supplier
PLUG,CMTG,TOP,9 5/8,HWE,8.16 MIN/9.06 MA	1	EA		
R/A DENSOMETER W/CHART RECORDER,/JOB,ZI	1	JOB		
PORT. DATA ACQUIS. W/OPTICEM RT W/HES	1	EA		
ADC (AUTO DENSITY CTRL) SYS, /JOB,ZI	1	JOB		

Tools and Accessories													
Type	Size	Qty	Make	Depth	Type	Size	Qty	Make	Depth	Type	Size	Qty	Make
Guide Shoe					Packer					Top Plug			
Float Shoe					Bridge Plug					Bottom Plug			
Float Collar					Retainer					SSR plug set			
Insert Float										Plug Container			
Stage Tool										Centralizers			
Miscellaneous Materials													
Gelling Agt			Conc		Surfactant			Conc		Acid Type		Qty	Conc %
Treatment Fld			Conc		Inhibitor			Conc		Sand Type		Size	Qty
Fluid Data													
Stage/Plug #: 1													
Fluid #	Stage Type	Fluid Name			Qty	Qty uom	Mixing Density lbm/gal	Yield ft3/sk	Mix Fluid Gal/sk	Rate bbl/min	Total Mix Fluid Gal/sk		
1	Water Spacer				20.00	bbl	8.33	.0	.0	4.0			
2	Gel Spacer				20.00	bbl	8.4	.0	.0	4.0			
3	Water Spacer				20.00	bbl	8.4	.0	.0	6.5			
4	VersaCem Lead Cement	VERSACEM (TM) SYSTEM (452010)			1029.0	sacks	12.3	2.38	12.62	6.5	12.62		
12.62 Gal		FRESH WATER											
5	VersaCem Tail Cement	VERSACEM (TM) SYSTEM (452010)			180.0	sacks	12.8	2.07	10.67	6.5	10.67		
10.67 Gal		FRESH WATER											
6	Displacement				183.00	bbl	8.4	.0	.0	6.5			
7	Topout Cement	HALCEM (TM) SYSTEM (452986)				sacks	12.5	1.97	10.96	3.0	10.96		
10.96 Gal		FRESH WATER											
Calculated Values				Pressures				Volumes					
Displacement	182.6	Shut In: Instant			Lost Returns	872.2	Cement Slurry	502.6	Pad				
Top Of Cement	SURFACE	5 Min			Cement Returns	7	Actual Displacement	182.6	Treatment				
Frac Gradient		15 Min			Spacers	60	Load and Breakdown		Total Job	879.2			
Rates													
Circulating	0	Mixing		6.5	Displacement	6.5	Avg. Job		6.5				
Cement Left In Pipe	Amount	46 ft	Reason	Shoe Joint									
Frac Ring # 1 @	ID	Frac ring # 2 @	ID	Frac Ring # 3 @	ID	Frac Ring # 4 @	ID						
The Information Stated Herein Is Correct					Customer Representative Signature								

The Road to Excellence Starts with Safety

Sold To #: 344034		Ship To #: 2825567		Quote #:		Sales Order #: 7842148	
Customer: OXY GRAND JUNCTION EBUSINESS				Customer Rep: VILLEGAS, ALEX			
Well Name: CC			Well #: 697-08-23A			API/UWI #: 05-045-18147	
Field: GRAND VALLEY		City (SAP):		County/Parish: Garfield			State: Colorado
Legal Description:							
Lat: N 39.542 deg. OR N 39 deg. 32 min. 30.923 secs.				Long: W 108.238 deg. OR W -109 deg. 45 min. 42.412 secs.			
Contractor: H&P Drilling			Rig/Platform Name/Num: H&P 353				
Job Purpose: Cement Surface Casing						Ticket Amount:	
Well Type: Development Well			Job Type: Cement Surface Casing				
Sales Person: DUNNING, DUSTIN			Srv Supervisor: MUHLESTEIN, RYAN			MBU ID Emp #: 453609	

Activity Description	Date/Time	Cht #	Rate bbl/min	Volume bbl		Pressure psig		Comments
				Stage	Total	Tubing	Casing	
Call Out	03/18/2011 19:00							
Pre-Convoy Safety Meeting	03/18/2011 21:00							ALL HES EE'S
Arrive At Loc	03/19/2011 04:00							RIG STILL RUNNING
Pre-Rig Up Safety Meeting	03/19/2011 04:30							ALL HES EE'S
Rig-Up Equipment	03/19/2011 05:00							1 HT 400 PUMP, 1 BULK STORAGE BIN, 1 FIELD STORAGE BIN, 1 F-450 PICK-UP, 1 PLUG CONTAINER
Other	03/19/2011 06:00							RIG CEASES RUNNING CASING, WAITING ON MATERIAL, CIRC. WELL INTERMITTENTLY
Other	03/19/2011 13:00							RIG UNABLE TO MOVE CASING, STUCK 36' ABOVE RIG FLOOR, INITIATE CMT JOB PER CO. REP.
Pre-Job Safety Meeting	03/19/2011 13:30							ALL HES EE'S, RIG CREW AND CO REP
Start Job	03/19/2011 14:29							TD-2730' TP-2408' SJ-46' CASING 9 5/8" 36# J-55 HOLE 14 3/4"
Pump Water	03/19/2011 14:30		1	2			53.0	FRESH H2O TO FILL LINES
Test Lines	03/19/2011 14:37						2850.0	HELD PSI FOR 2 MIN, NO LEAKS
Pump Spacer 1	03/19/2011 14:41		4	20			95.0	FRESH H2O
Pump Spacer 2	03/19/2011 14:50		4	20			95.0	LGC-36 5 GAL PER 20 BBLs

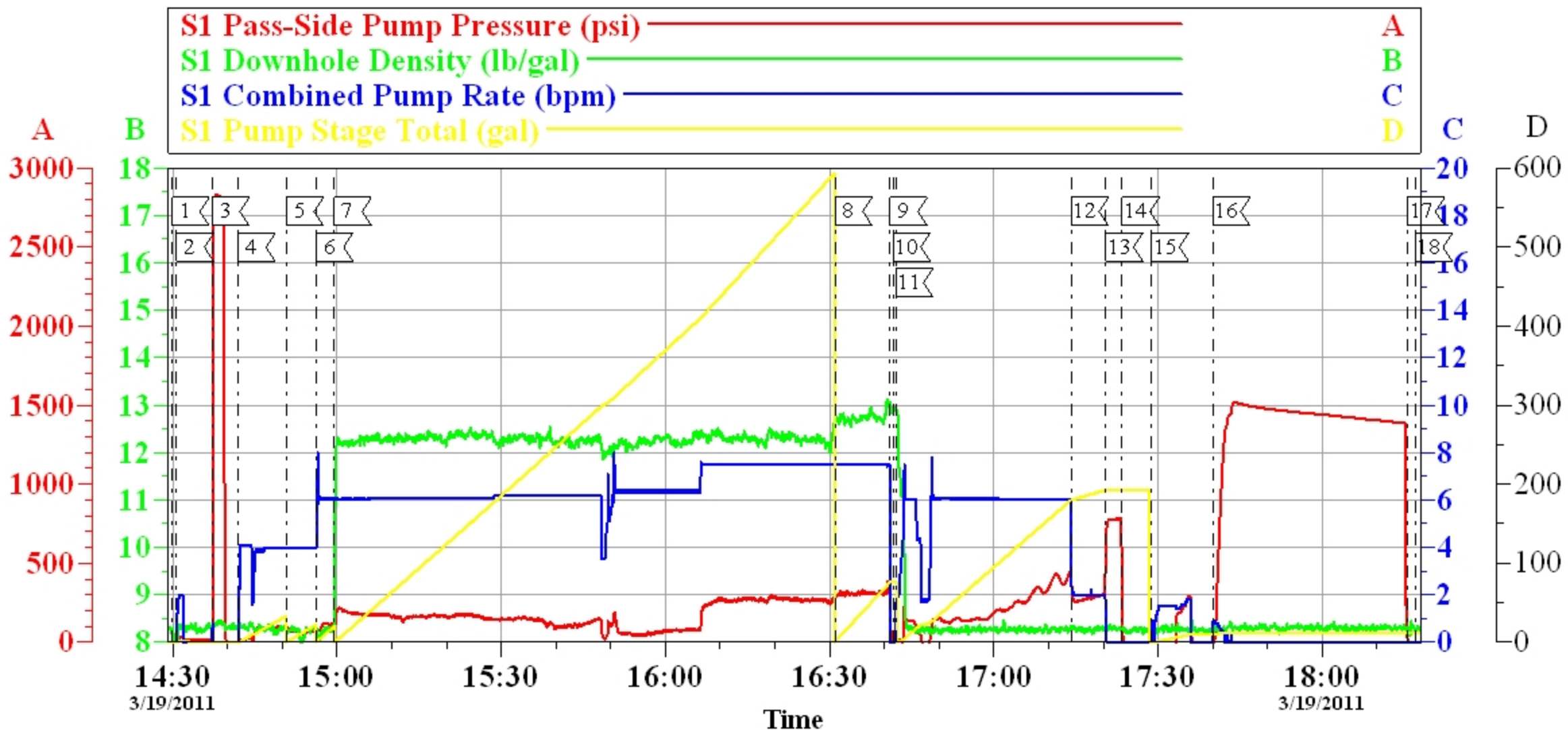
Activity Description	Date/Time	Cht #	Rate bbl/min	Volume bbl		Pressure psig		Comments
				Stage	Total	Tubing	Casing	
Pump Spacer 1	03/19/2011 14:56		4	20			120.0	FRESH H2O
Pump Lead Cement	03/19/2011 14:59		6.5	436.2			298.0	1029 SKS 12.3 PPG 2.33 FT3/SK 12.62 GAL/SK, 7 BOXES TUFF FIBER
Pump Tail Cement	03/19/2011 16:30		6.5	66.4			330.0	180 SKS 12.8 PPG 2.07 FT3/SK 10.67 GAL/SK
Shutdown	03/19/2011 16:41							
Drop Top Plug	03/19/2011 16:41							VERIFY PLUG LAUNCHED
Pump Displacement	03/19/2011 16:42		6.5	182.6			495.0	FRESH H2O DISPLACEMENT, NO RETURNS, 0 CEMENT TO SURFACE
Slow Rate	03/19/2011 17:14		2	172			280.0	
Bump Plug	03/19/2011 17:20		2	182.6			790.0	PLUG BUMPED AT 320 PSI PRESSURED UP TO 790 PSI
Check Floats	03/19/2011 17:23							FLOATS HELD, 1 BBL BACK TO PUMP TRUCK
Pump Water	03/19/2011 17:28		2	10			300.0	PUMP SUGAR WATER THRU PARASITE LINE, CIRCULATED AT 300 PSI, FLOW NOTED AT SURFACE 6 BBLS AWAY
Pressure Test	03/19/2011 17:40						1529.0	PRESSURE TEST CASING PER CO REP REQUEST, HELD PRESSURE 15 MINS
Release Casing Pressure	03/19/2011 18:15							
End Job	03/19/2011 18:18							NO RETURNS THROUGHOUT JOB, END OF PRIMARY JOB WAITING TO TOP OUT
Other	03/19/2011 19:39							START TOP OUT 1
Pump Cement	03/19/2011 19:39		2	45			30.0	130 SKS 12.5 PPG 1.97 FT3/SK 10.96 GAL/SK ALREADY ON LOC.
Shutdown	03/19/2011 20:08							WAITING TO TOPOUT

Activity Description	Date/Time	Cht #	Rate bbl/min	Volume bbl		Pressure psig		Comments
				Stage	Total	Tubing	Casing	
Other	03/19/2011 23:08							START 2ND TOP OUT
Pump Water	03/19/2011 23:08		1	1			9.0	FRESH H2O
Pump Cement	03/19/2011 23:12		3	30			94.0	85 SKS 12.5 PPG 1.97 FT3/SK 10.96 GAL/SK, ALREADY ON LOC. CMT TO SURFACE
Pump Water	03/19/2011 23:23		3	2			75.0	FRESH H2O
Shutdown	03/19/2011 23:25							WAITING TO TOPOUT
Other	03/20/2011 00:13							START 3 RD TOP OUT
Pump Water	03/20/2011 00:13		1	1				FRESH H2O
Pump Cement	03/20/2011 00:15		3	18			90.0	50 SKS 12.5 PPG 1.97 FT3/SK 10.96 GAL/SK. CMT TO SURF. 350 SKS TOP OUT CMT ORDERED BY CO. REP.
Shutdown	03/20/2011 00:22							
Other	03/20/2011 00:24							START HESITATION
Pump Water	03/20/2011 00:42		2	3				FRESH H2O
Other	03/20/2011 00:59							WAITING TO TOP OUT
Other	03/20/2011 02:28							START TOP OUT 4
Pump Water	03/20/2011 02:29		1	1				FRESH H2O
Pump Cement	03/20/2011 02:33		3	18			75.0	50 SKS 12.5 PPG 1.97 FT3/SK 10.96 GAL/SK. 7 BBLs CMT TO SURFACE, 250 SKS REMAIN ON LOC FOR NEXT JOB.
Other	03/20/2011 02:44							START HESITATION
Shutdown	03/20/2011 03:33							
Pump Water	03/20/2011 03:41		2	3				FRESH H2O

Activity Description	Date/Time	Cht #	Rate bbl/ min	Volume bbl		Pressure psig		Comments
				Stage	Total	Tubing	Casing	
End Job	03/20/2011 03:44							CREW REQ. ON LOC AT 0500 EJ AT 0344. 15 ADD HRS, 7 DERRICK TRIPS AND 20 LBS SUGAR CHARGED. NO 1" IRON USED
Pre-Rig Down Safety Meeting	03/20/2011 04:00							ALL HES EE'S
Rig-Down Equipment	03/20/2011 04:15							
Pre-Convoy Safety Meeting	03/20/2011 04:55							ALL HES EE'S
Crew Leave Location	03/20/2011 05:00							THANKS FOR USING HALLIBURTON CEMENT, RYAN MUHLESTEIN AND CREW

OXY

CC 697-08-23A 9 5/8" SURFACE CASING



Local Event Log

1 START JOB	14:29:53	2 FILL LINES	14:30:42	3 TEST LINES	14:37:12
4 PUMP H2O SPACER	14:41:56	5 PUMP GEL SPACER	14:50:45	6 PUMP H2O SPACER	14:56:09
7 PUMP LEAD CMT	14:59:31	8 PUMP TAIL CMT	16:30:59	9 SHUT DOWN	16:41:02
10 DROP PLUG	16:41:35	11 PUMP DISPLACEMENT	16:42:03	12 SLOW RATE	17:14:08
13 BUMP PLUG	17:20:27	14 CHECK FLOATS	17:23:26	15 PUMP H2O ON PARASITE	17:28:46
16 PRESSURE TEST CASING	17:40:00	17 RELEASE PRESSURE	18:15:34	18 END JOB	18:16:58

Customer: OXY
Well Description: CC 697-08-23A
Customer Rep: ALEX VILLEGAS

Job Date: 19-Mar-2011
Job type: SURFACE
Service Supervisor: RYAN MUHLESTEIN

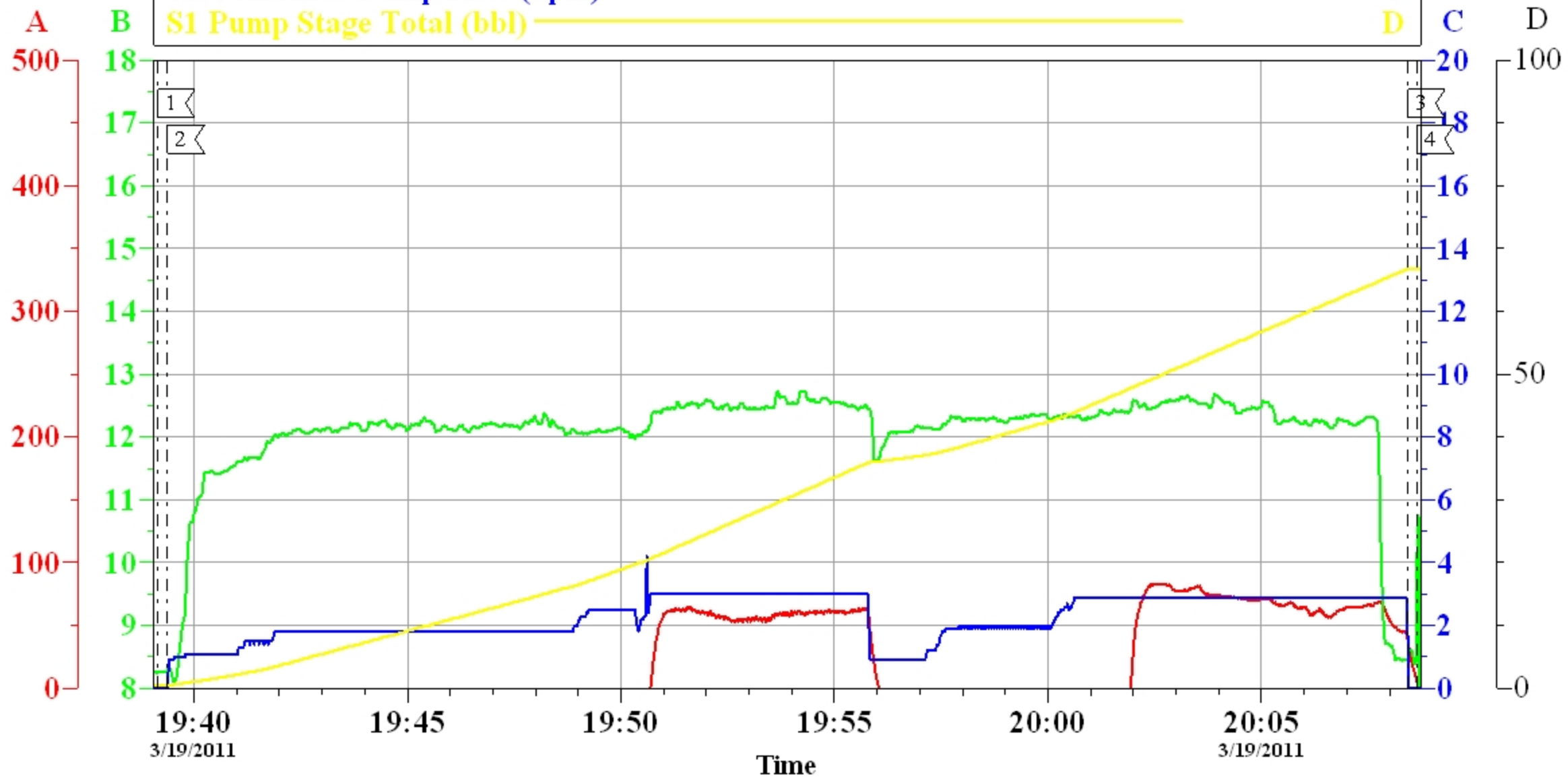
Sales Order #: 7842148
ADC Used: YES
Operator/ Pump: TRAVIS BROWN/ ELITE 1

OptiCem v6.4.6
19-Mar-11 18:19

OXY

CC 697-08-23A 9 5/8" SURFACE TOP OUT 1

S1 Pass-Side Pump Pressure (psi) ————— **A**
S1 Downhole Density (lb/gal) ————— **B**
S1 Combined Pump Rate (bpm) ————— **C**
S1 Pump Stage Total (bbl) ————— **D**



Local Event Log					
1	TOP OUT 1	19:39:09	2	PUMP CEMENT	19:39:23
3	SHUT DOWN	20:08:26	4	WAIT TO TOP OUT	20:08:38

Customer: OXY
 Well Description: CC 697-08-23A
 Customer Rep: ALEX VILLEGAS

Job Date: 19-Mar-2011
 Job type: TOP OUT
 Service Supervisor: RYAN MUHLESTEIN

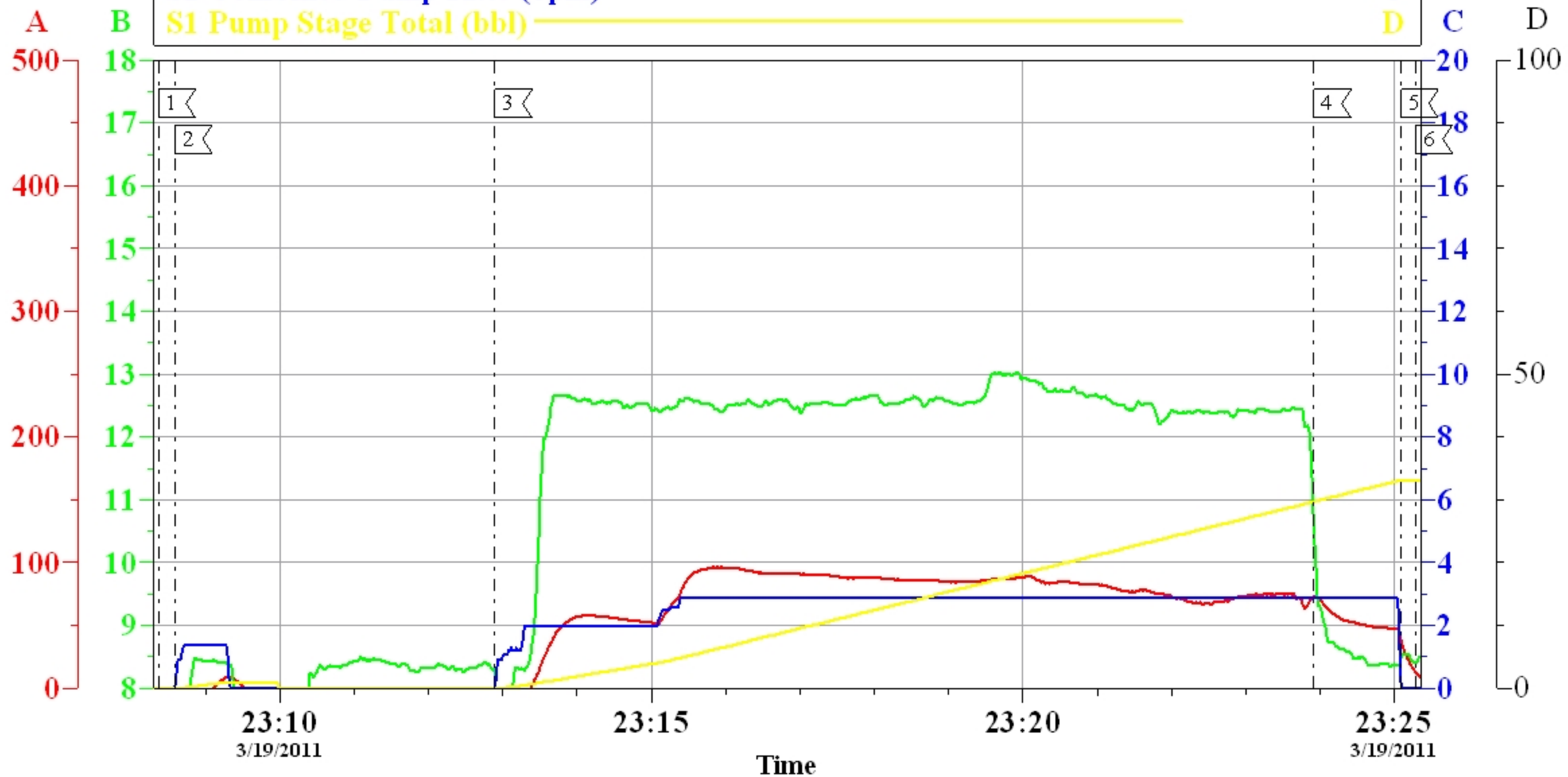
Sales Order #: 7842148
 ADC Used: YES
 Operator/ Pump: TRAVIS BROWN/ ELITE 1

OptiCem v6.4.6
 19-Mar-11 20:26

OXY

CC 697-08-23A 9 5/8" SURFACE TOP OUT 1

S1 Pass-Side Pump Pressure (psi) ————— **A**
S1 Downhole Density (lb/gal) ————— **B**
S1 Combined Pump Rate (bpm) ————— **C**
S1 Pump Stage Total (bbl) ————— **D**



Local Event Log

1 START TOP OUT 2	23:08:22	2 PUMP H2O	23:08:35	3 PUMP CMT	23:12:54
4 PUMP H2O	23:23:55	5 SHUT DOWN	23:25:05	6 WAITING TO TOP OUT	23:25:17

Customer: OXY
 Well Description: CC 697-08-23A
 Customer Rep: ALEX VILLEGAS

Job Date: 19-Mar-2011
 Job type: TOP OUT
 Service Supervisor: RYAN MUHLESTEIN

Sales Order #: 7842148
 ADC Used: YES
 Operator/ Pump: TRAVIS BROWN/ ELITE 1

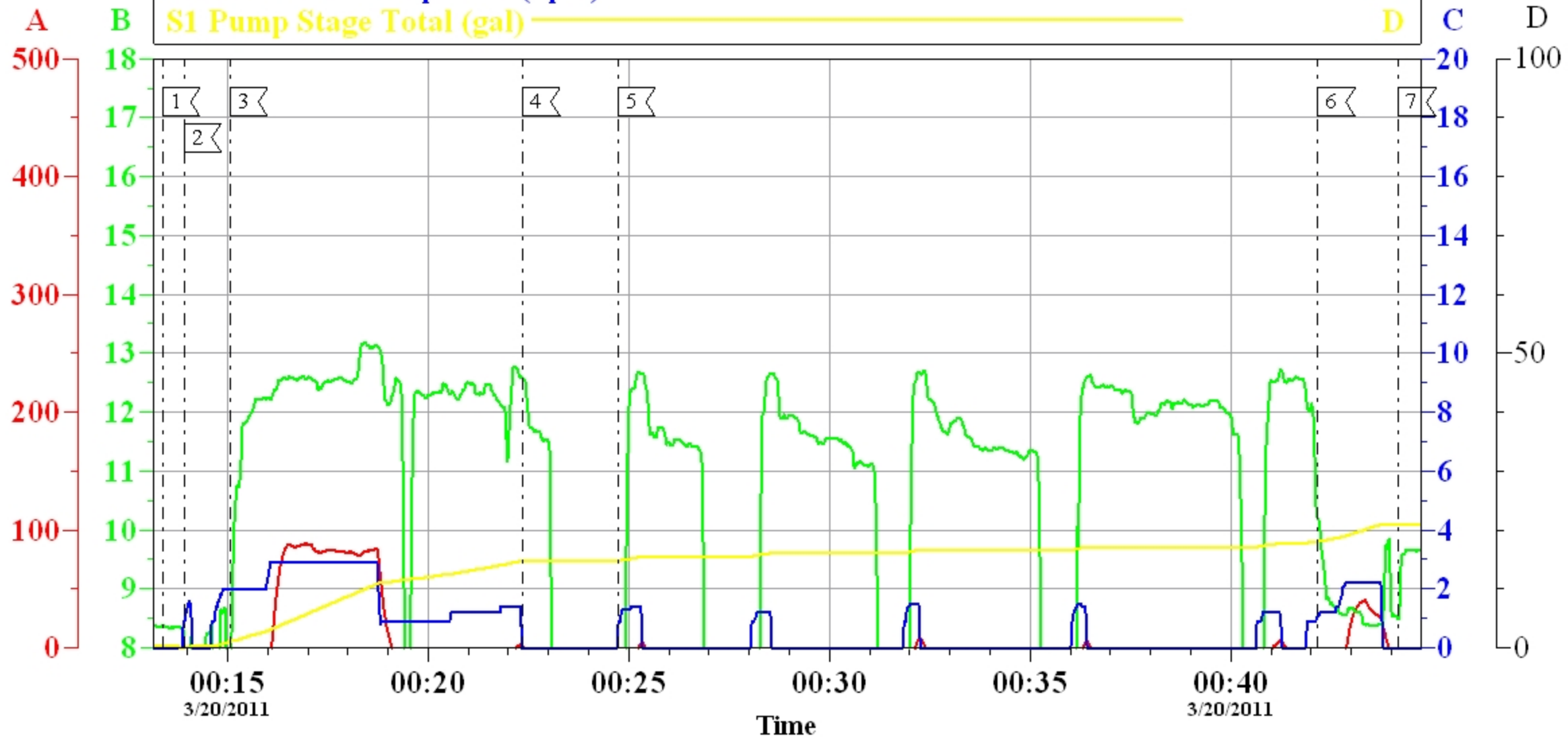
OptiCem v6.4.6
 19-Mar-11 23:37

OXY

CC 697-08-23A

9 5/8" SURFACE TOP OUT 3

S1 Pass-Side Pump Pressure (psi) ————— **A**
S1 Downhole Density (lb/gal) ————— **B**
S1 Combined Pump Rate (bpm) ————— **C**
S1 Pump Stage Total (gal) ————— **D**



Local Event Log

1 START TOP OUT 2	00:13:23	2 PUMP H2O	00:13:55	3 PUMP CMT	00:15:04
4 SHUT DOWN	00:22:22	5 START HESITATION	00:24:44	6 PUMP H2O	00:42:11
7 WAITING TO TOP OUT	00:44:11				

Customer: OXY
 Well Description: CC 697-08-23A
 Customer Rep: ALEX VILLEGAS

Job Date: 19-Mar-2011
 Job type: TOP OUT
 Service Supervisor: RYAN MUHLESTEIN

Sales Order #: 7842148
 ADC Used: YES
 Operator/ Pump: TRAVIS BROWN/ ELITE 1

OptiCem v6.4.6
 20-Mar-11 00:55

OXY

CC 697-08-23A

9 5/8" SURFACE TOP OUT 4

S1 Pass-Side Pump Pressure (psi)

S1 Downhole Density (lb/gal)

S1 Combined Pump Rate (bpm)

S1 Pump Stage Total (gal)

A

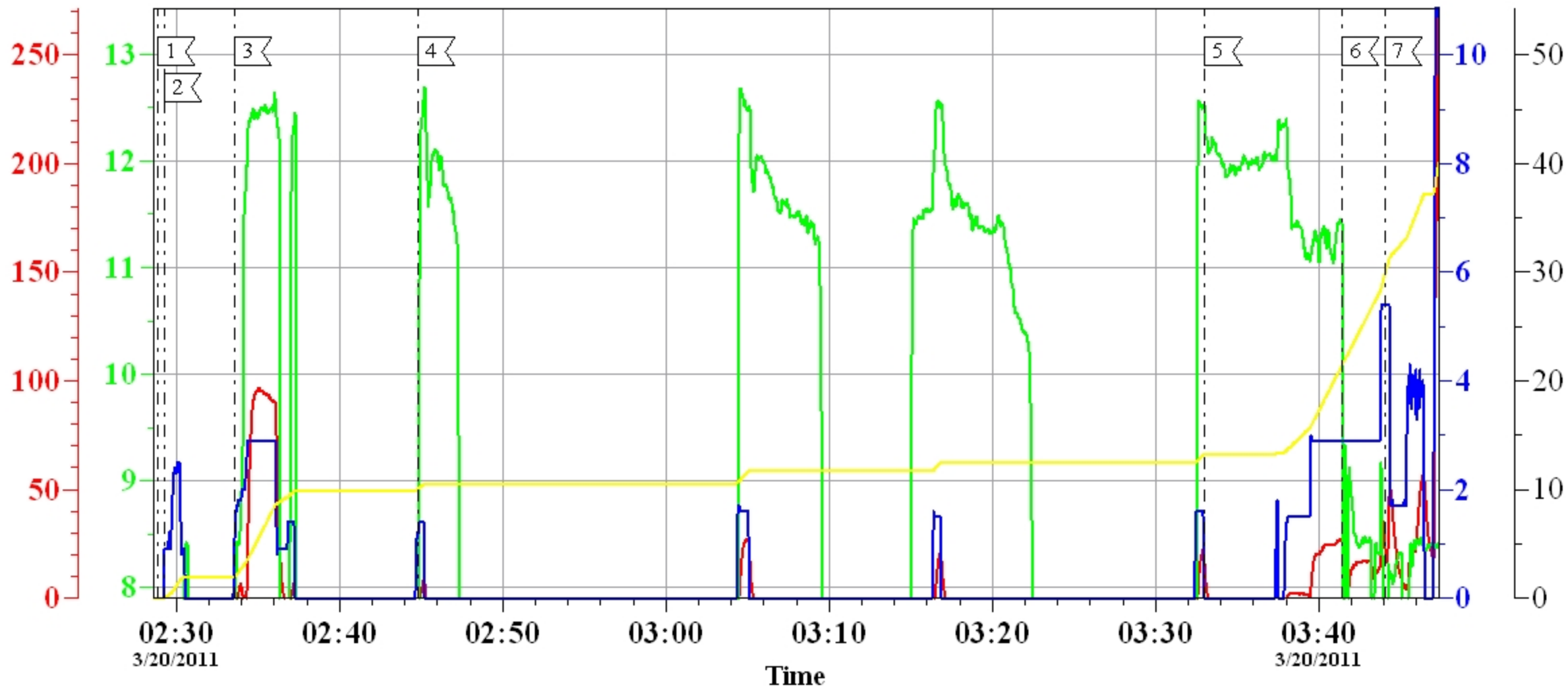
B

C

D

C

D



Local Event Log

1 START TOP OUT 4	02:28:51	2 PUMP H2O	02:29:14	3 PUMP CMT	02:33:32
4 START HESITATION	02:44:46	5 SHUT DOWN	03:33:01	6 PUMP H2O	03:41:24
7 END JOB	03:44:02				

Customer:
Well Description:
Customer Rep:

Job Date: 19-Mar-2011
Job type:
Service Supervisor:

Sales Order #:
ADC Used:
Operator/ Pump:

OptiCem v6.4.6
20-Mar-11 03:59