

---

# **OXY GRAND JUNCTION EBUSINESS**

---

**CC 697-08-14  
Piceance Creek  
Garfield County , Colorado**

**Cement Surface Casing**  
**17-Mar-2011**

**Post Job Report**

## The Road to Excellence Starts with Safety

Sold To #: 344034		Ship To #: 2843337		Quote #:		Sales Order #: 7840406	
Customer: OXY GRAND JUNCTION EBUSINESS				Customer Rep: Benevides, Victor			
Well Name: CC			Well #: 697-08-14			API/UWI #: 05-045-18130	
Field: Piceance Creek		City (SAP): Debque		County/Parish: Garfield		State: Colorado	
Lat: N 39.542 deg. OR N 39 deg. 32 min. 30.988 secs.				Long: W 108.238 deg. OR W -109 deg. 45 min. 42.466 secs.			
Contractor: H&P 353			Rig/Platform Name/Num: H&P353				
Job Purpose: Cement Surface Casing							
Well Type: Development Well			Job Type: Cement Surface Casing				
Sales Person: DUNNING, DUSTIN			Srvc Supervisor: ANDREWS, ANTHONY			MBU ID Emp #: 321604	

## Job Personnel

HES Emp Name	Exp Hrs	Emp #	HES Emp Name	Exp Hrs	Emp #	HES Emp Name	Exp Hrs	Emp #
ANDREWS, ANTHONY Michael		321604	CHASTAIN, DERICK Allan		455848	SILVERTHORN, AARON Jacob		491305
WYCKOFF, RYAN Scott		476117						

## Equipment

HES Unit #	Distance-1 way	HES Unit #	Distance-1 way	HES Unit #	Distance-1 way	HES Unit #	Distance-1 way

## Job Hours

Date	On Location Hours	Operating Hours	Date	On Location Hours	Operating Hours	Date	On Location Hours	Operating Hours
3/17/11	21	9	3/18/11	2	1			
TOTAL			Total is the sum of each column separately					

## Job

Formation Name	Top	Bottom	Called Out	Date	Time	Time Zone
Formation Depth (MD)			On Location	16 - Mar - 2011	20:30	MST
Form Type		BHST	Job Started	17 - Mar - 2011	03:00	MST
Job depth MD	2690. ft	Job Depth TVD	Job Completed	17 - Mar - 2011	09:18	MST
Water Depth		Wk Ht Above Floor	Departed Loc	17 - Mar - 2011	21:54	MST
Perforation Depth (MD)	From	To		18 - Mar - 2011	02:00	MST

## Well Data

Description	New / Used	Max pressure psig	Size in	ID in	Weight lbm/ft	Thread	Grade	Top MD ft	Bottom MD ft	Top TVD ft	Bottom TVD ft
Open Hole				14.75				.	2700.	.	2700.
Surface Casing	Unknown		9.625	8.921	36.		J-55	.	2690.	.	2690.

Sales/Rental/3<sup>rd</sup> Party (HES)

Description	Qty	Qty uom	Depth	Supplier
PLUG,CMTG,TOP,9 5/8,HWE,8.16 MIN/9.06 MA	1	EA		
R/A DENSOMETER W/CHART RECORDER,/JOB,ZI	1	JOB		
ADC (AUTO DENSITY CTRL) SYS, /JOB,ZI	1	JOB		

## Tools and Accessories

Type	Size	Qty	Make	Depth	Type	Size	Qty	Make	Depth	Type	Size	Qty	Make
Guide Shoe					Packer					Top Plug			
Float Shoe					Bridge Plug					Bottom Plug			
Float Collar					Retainer					SSR plug set			
Insert Float										Plug Container			
Stage Tool										Centralizers			

## Miscellaneous Materials

Gelling Agt	Conc	Surfactant	Conc	Acid Type	Qty	Conc	%
Treatment Fld	Conc	Inhibitor	Conc	Sand Type	Size	Qty	

Fluid Data									
Stage/Plug #: 1									
Fluid #	Stage Type	Fluid Name	Qty	Qty uom	Mixing Density lbm/gal	Yield ft <sup>3</sup> /sk	Mix Fluid Gal/sk	Rate bbl/min	Total Mix Fluid Gal/sk
1	Water Spacer		10	Bbl	8.33	.0	.0	.0	
2	Gel Water		20	Bbl	8.5	.0	.0	.0	
0.25 gal/bbl		LGC-36 UC, BULK (101582749)							
3	Water Spacer		10	bbl	.	.0	.0	.0	
4	Lead Cement	VERSACEM (TM) SYSTEM (452010)	1029	sacks	12.3	2.33	12.62		12.62
12.62 Gal		FRESH WATER							
5	Tail Cement	VERSACEM (TM) SYSTEM (452010)	180	sacks	12.8	2.07	10.67		10.67
10.67 Gal		FRESH WATER							
6	Displacement		204.4	bbl	.	.0	.0	.0	
Calculated Values		Pressures		Volumes					
Displacement	204.4	Shut In: Instant		Lost Returns	Y	Cement Slurry	495.4	Pad	
Top Of Cement	SURFACE	5 Min		Cement Returns	10	Actual Displacement	204.4	Treatment	
Frac Gradient		15 Min		Spacers	40	Load and Breakdown		Total Job	739.8
Rates									
Circulating	RIG	Mixing	6	Displacement	6-2	Avg. Job	6		
Cement Left In Pipe	Amount	46 ft	Reason	Shoe Joint					
Frac Ring # 1 @	ID	Frac ring # 2 @	ID	Frac Ring # 3 @	ID	Frac Ring # 4 @	ID		
The Information Stated Herein Is Correct				Customer Representative Signature					

*The Road to Excellence Starts with Safety*

<b>Sold To #:</b> 344034		<b>Ship To #:</b> 2843337		<b>Quote #:</b>		<b>Sales Order #:</b> 7840406	
<b>Customer:</b> OXY GRAND JUNCTION EBUSINESS				<b>Customer Rep:</b> Benevides, Victor			
<b>Well Name:</b> CC			<b>Well #:</b> 697-08-14			<b>API/UWI #:</b> 05-045-18130	
<b>Field:</b> Piceance Creek		<b>City (SAP):</b> Debque		<b>County/Parish:</b> Garfield			<b>State:</b> Colorado
<b>Legal Description:</b>							
<b>Lat:</b> N 39.542 deg. OR N 39 deg. 32 min. 30.988 secs.				<b>Long:</b> W 108.238 deg. OR W -109 deg. 45 min. 42.466 secs.			
<b>Contractor:</b> H&P 353			<b>Rig/Platform Name/Num:</b> H&P353				
<b>Job Purpose:</b> Cement Surface Casing						<b>Ticket Amount:</b>	
<b>Well Type:</b> Development Well			<b>Job Type:</b> Cement Surface Casing				
<b>Sales Person:</b> DUNNING, DUSTIN			<b>Srv Supervisor:</b> ANDREWS, ANTHONY			<b>MBU ID Emp #:</b> 321604	

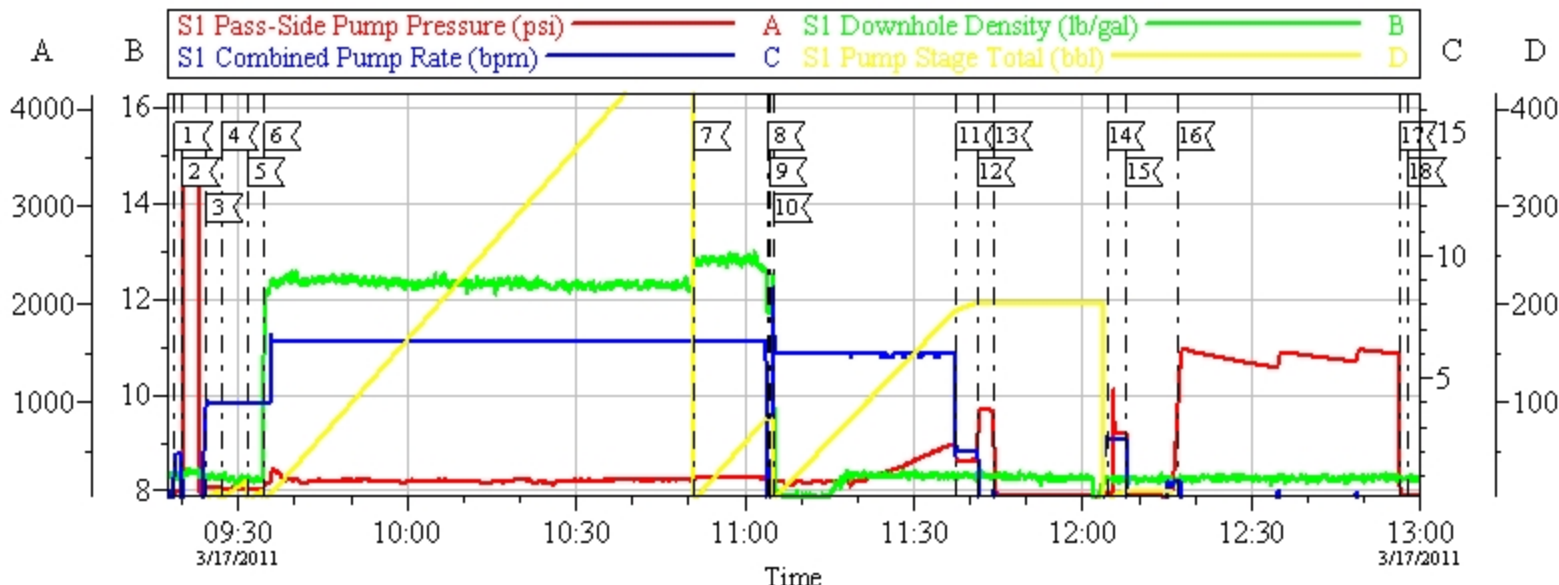
Activity Description	Date/Time	Cht #	Rate bbl/min	Volume bbl		Pressure psig		Comments
				Stage	Total	Tubing	Casing	
Call Out	03/16/2011 20:30							
Pre-Convoy Safety Meeting	03/16/2011 22:45							
Crew Leave Yard	03/16/2011 23:00							
Arrive At Loc	03/17/2011 03:00							
Assessment Of Location Safety Meeting	03/17/2011 03:05							
Other	03/17/2011 07:00							SPOT EQUIPMENT
Pre-Rig Up Safety Meeting	03/17/2011 07:05							
Rig-Up Equipment	03/17/2011 07:10							
Pre-Job Safety Meeting	03/17/2011 08:50							
Start Job	03/17/2011 09:18							TD: 2720 TP: 2690 SJ: 46' MW: 9.3PPG W/ AIR 9 5/8" 36#/FT CSG IN 14 3/4" OH
Test Lines	03/17/2011 09:20							2500 PSI TEST
Pump Spacer	03/17/2011 09:23		6	10			91.0	FRESH H2O SPACER 1
Pump Spacer	03/17/2011 09:26		6	20			130.0	LGC GEL SPACER
Pump Spacer	03/17/2011 09:31		6	10			112.0	FRESH H2O SPACER
Pump Lead Cement	03/17/2011 09:34		6	429			122.0	1029 SKS @ 12.3 PPG 2.33 YLD 12.62 GAL/SK W/ TUFF FIBER

Activity Description	Date/Time	Cht #	Rate bbl/min	Volume bbl		Pressure psig		Comments
				Stage	Total	Tubing	Casing	
Pump Tail Cement	03/17/2011 10:51		6	66.4			228.0	180 SKS @ 12.8 SKS 2.07 YLD 10.67 GAL/SK
Shutdown	03/17/2011 11:03							
Drop Plug	03/17/2011 11:04							
Pump Displacement	03/17/2011 11:04		6		204.4		244.0	FRESH H2O DISPLACEMENT
Slow Rate	03/17/2011 11:37		2	194			406.0	
Bump Plug	03/17/2011 11:41		2	204.4			919.0	PLUG BUMPED AT CALCULATED DISPLACEMENT
Check Floats	03/17/2011 11:44							FLOATS HELD.
Other	03/17/2011 12:04		2.5	10			715.0	PUMP 10 BBLS SUGAR WATER DOWN PARASITE STRING
Shutdown	03/17/2011 12:08							
Pressure Test	03/17/2011 12:17						1529.0	CUSTOMER REQUESTED 30 MIN CASING PRESSURE TEST @ 1500 PSI
Release Casing Pressure	03/17/2011 12:56							CASING PRESSURE TEST SUCCESSFUL.
Start Job	03/17/2011 16:12							TOP OUT NUMBER 1. CUSTOMER REQUESTED 50 BBLS OF CEMENT/ TOPOUT.
Pump Water	03/17/2011 16:13		1	0.5		58.0		.5 FRESH H2O AHEAD
Pump Cement	03/17/2011 16:15		1.5	50		63.0		140 SKS @ 12.5 PPG 1.97 YLD
Pump Water	03/17/2011 16:48		1.5	0.5		42.0		.5 BBL WATER BEHIND
Shutdown	03/17/2011 16:50							END OF TOPOUT NUMBER 1
Stage Cement	03/17/2011 17:00							STAGE CEMENT 1 HOUR
Start Job	03/17/2011 18:14							TOPOUT NUNMBER 2
Pump Water	03/17/2011 18:15		1	0.5		61.0		.5 BBL WATER AHEAD
Pump Cement	03/17/2011 18:17		1.5	51		63.0		140 SKS @ 12.5 PPG 1.97 YLD

Activity Description	Date/Time	Cht #	Rate bbl/min	Volume bbl		Pressure psig		Comments
				Stage	Total	Tubing	Casing	
Pump Water	03/17/2011 18:49		1	0.5		54.0		.5 BBL WATER BEHIND
Shutdown	03/17/2011 18:50							END OF TOPOUT 2
Stage Cement	03/17/2011 19:00							STAGE CEMENT 1 HOURS
Start Job	03/17/2011 21:15							TOPOUT NUMBER 3
Pump Water	03/17/2011 21:16		1			57.0		HALF BBL FRESH WATER AHEAD TO FILL LINES AND VERIFY FLOW THROUGH IRON.
Pump Cement	03/17/2011 21:17		2			55.0		185 SKS @ 12.5 PPG 1.97 YLD
Pump Water	03/17/2011 21:53		1			58.0		HALF BBLS FRESH H2O BEHIND TO CLEAR LINES
Shutdown	03/17/2011 21:54							CIRCULATED CEMENT TO SURFACE, 10 BBLS. PUMPED 65 BBLS TOPOUT CEMENT, APPROX 185 SKS OUT OF UNIT #10867304. UNIT # 10867304 SHOULD STILL HAVE +/- 165 SKS LEFT IN TIER.
End Job	03/17/2011 21:54							
Post-Job Safety Meeting (Pre Rig-Down)	03/17/2011 22:50							NO CIRCULATION THROUGHOUT JOB. PIPE WAS LEFT STATIC THROUGHOUT JOB. FLOATS HELD. PLUG BUMPED AT CALCULATED DISPLACEMENT. USED 7 BOXES TUFF FIBER.

Activity Description	Date/Time	Cht #	Rate bbl/ min	Volume bbl		Pressure psig		Comments
				Stage	Total	Tubing	Casing	
Rig-Down Equipment	03/17/2011 23:00							USED 50 LBS SUGAR. 9 ADD HOURS CHARGED. THERE WERE FOUR TOW CHARGES FOR PRELOAD OF JOB WITH 5.5 HRS OF TRAVEL TIME. THERE WAS 1 TOW CHARGE FOR TRAVEL FOR ACTUAL JOB. 2 HRS TRAVEL TIME FROM BOTTOM GUARD SHACK TO LOC.
Pre-Convoy Safety Meeting	03/18/2011 01:50							
Crew Leave Location	03/18/2011 02:00							THANK YOU FOR CHOOSING HALLIBURTON CEMENTING OF GRAND JUNCTION, COLORADO ANTHONY ANDREWS AND CREW

HP 353 - OXY  
9 5/8" SURFACE



Local Event Log							
Intersection		SPPP		Intersection		SPPP	
1	START JOB	09:18:41	67.00	2	TEST LINES	09:19:59	79.65
3	PUMP H2O SPACER 1	09:24:07	119.5	4	PUMP LGC SPACER	09:26:55	126.0
5	PUMP H2O SPACER 2	09:31:30	112.0	6	PUMP LEAD CEMENT	09:34:33	140.8
7	PUMP TAIL CEMENT	10:50:52	225.0	8	SHUT DOWN	11:03:55	108.4
9	DROP PLUG	11:04:19	71.99	10	PUMP DISPLACEMENT	11:05:13	248.6
11	SLOW RATE	11:37:37	414.9	12	BUMP PLUG	11:41:19	580.1
13	CHECK FLOATS	11:44:20	191.1	14	PUMP DOWN PARASITE	12:04:20	83.00
15	SHUT DOWN	12:07:37	685.4	16	TEST CASING	12:16:44	824.3
17	RELEASE PRESSURE	12:56:18	164.1	18	END JOB	12:57:49	50.00

Customer: OXY  
Well #: CC 697-08-14  
Customer Rep: ALEX VILLEGAS

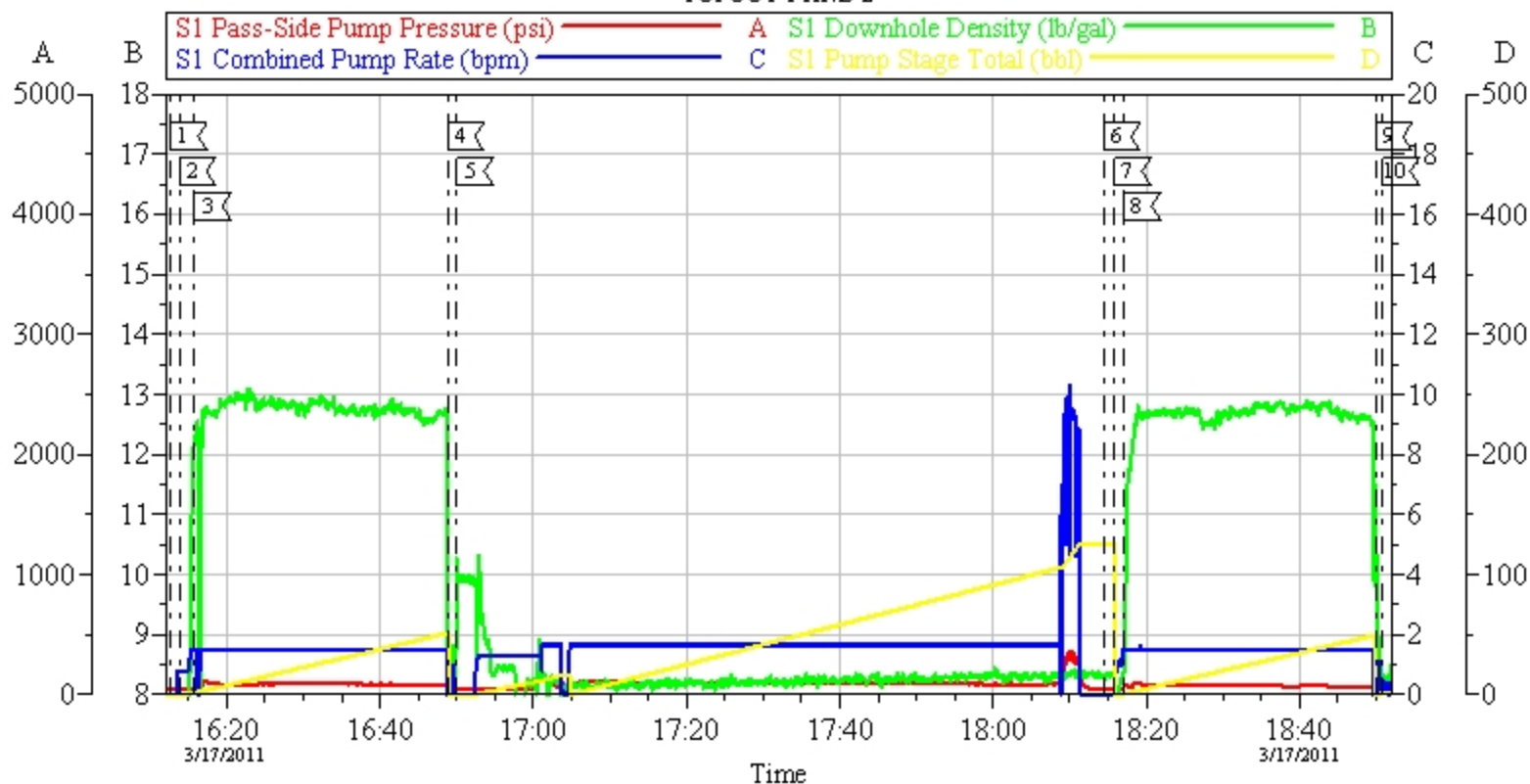
Job Date: 17-Mar-2011  
Job Type: SURFACE  
Pump Truck: ELITE 8/ RYAN WYCKOFF

Sales Order #: 7840406  
ADC Used: YES  
Supervisor: ANTHONY ANDREWS

OptiCem v6.3.4  
17-Mar-11 13:15



HP 353 - OXY  
TOPOUT 1 AND 2



Local Event Log					
Intersection		SPPP	Intersection		SPPP
1 START TOPOUT 1	16:12:43	50.00	2 PUMP H2O	16:13:49	50.00
4 PUMP H2O	16:48:48	70.87	5 SHUTDOWN	16:50:04	48.00
7 PUMP H2O	18:15:52	45.93	8 PUMP CEMENT	18:17:06	65.85
10 SHUTDOWN	18:50:52	48.00	9 PUMP H2O	18:49:56	53.00
			3 PUMP CEMENT	16:15:51	51.00
			6 START TOPOUT 2	18:14:27	49.00

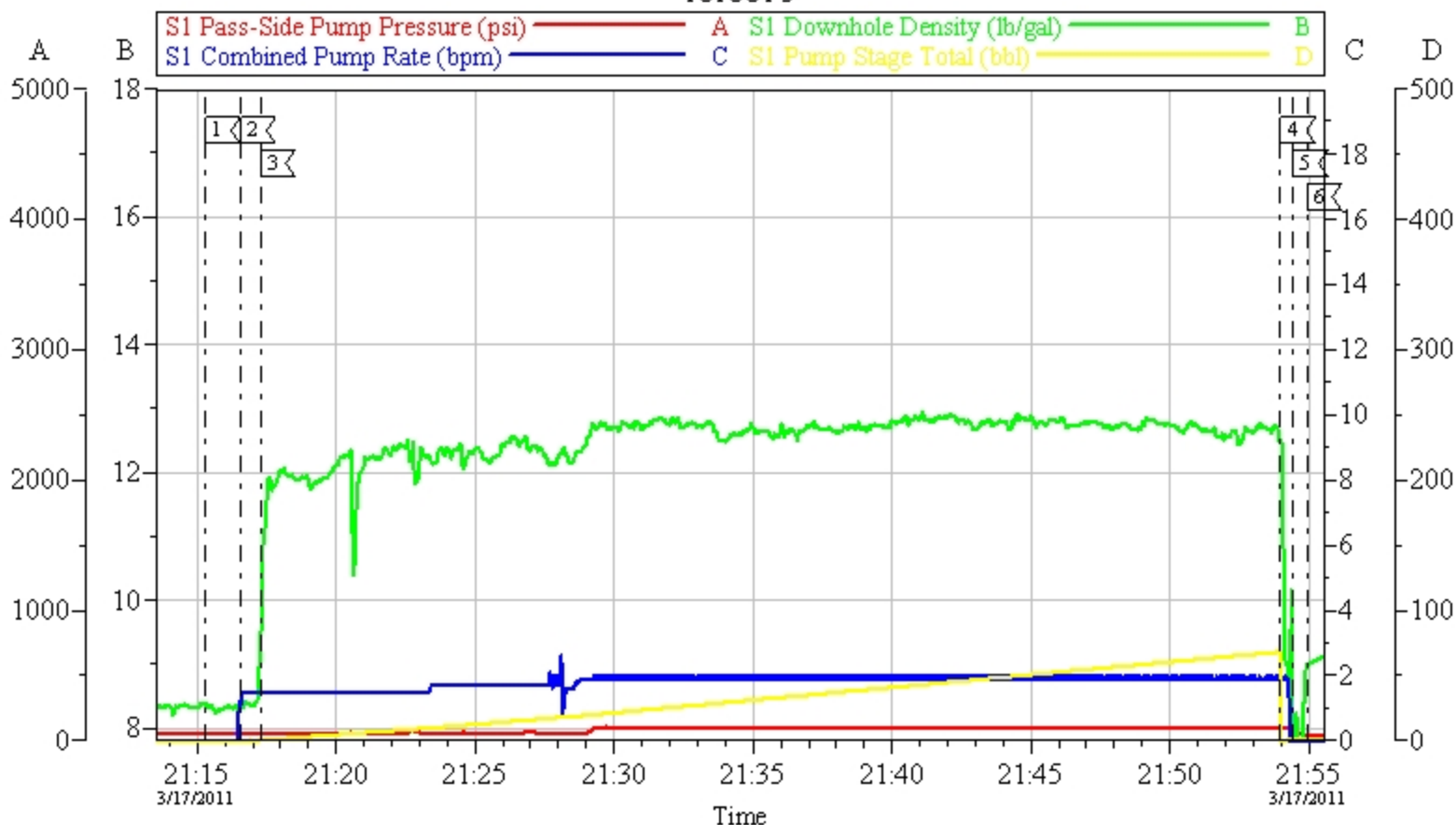
Customer: OXY  
Well #: CC 697-08-14  
Customer Rep: ALEX VILLEGAS

Job Date: 17-Mar-2011  
Job Type: SURFACE/ TOPOUT  
Pump Truck: ELITE 8/ RYAN WYCKOFF

Sales Order #: 7840406  
ADC Used: YES  
Supervisor: ANTHONY ANDREWS

OptiCem v6.3.4  
17-Mar-11 19:02

# HP 353 - OXY TOPOUT 3



Local Event Log					
Intersection	SPPP	Intersection	SPPP	Intersection	SPPP
1 START TOPOUT 3	21:15:18 52.00	2 PUMP H2O	21:16:34 52.00	3 PUMP CEMENT	21:17:16 54.00
4 PUMP H2O	21:53:59 96.00	5 SHUTDOWN	21:54:26 66.80	6 END JOB	21:54:55 48.00

Customer:  
Well #:  
Customer Rep:

Job Date: 17-Mar-2011  
Job Type:  
Pump Truck:

Sales Order #: 7840406  
ADC Used:  
Supervisor:

OptiCem v6.3.4  
17-Mar-11 22:37