

---

# **OXY GRAND JUNCTION EBUSINESS**

---

**CC 697-05-78B  
GRAND VALLEY  
Garfield County , Colorado**

**Cement Surface Casing  
26-Mar-2011**

**Job Site Documents**

### The Road to Excellence Starts with Safety

<b>Sold To #:</b> 344034		<b>Ship To #:</b> 2844957		<b>Quote #:</b>		<b>Sales Order #:</b> 7841888	
<b>Customer:</b> OXY GRAND JUNCTION EBUSINESS				<b>Customer Rep:</b> Benevides, Victor			
<b>Well Name:</b> CC			<b>Well #:</b> 697-05-78B			<b>API/UWI #:</b> 05-045-18126	
<b>Field:</b> GRAND VALLEY		<b>City (SAP):</b>		<b>County/Parish:</b> Garfield		<b>State:</b> Colorado	
<b>Lat:</b> N 39.542 deg. OR N 39 deg. 32 min. 31.171 secs.				<b>Long:</b> W 108.238 deg. OR W -109 deg. 45 min. 42.628 secs.			
<b>Contractor:</b> H&P Drilling			<b>Rig/Platform Name/Num:</b> H&P 353				
<b>Job Purpose:</b> Cement Surface Casing							
<b>Well Type:</b> Development Well			<b>Job Type:</b> Cement Surface Casing				
<b>Sales Person:</b> DUNNING, DUSTIN			<b>Srvc Supervisor:</b> CALDWELL, JEFFREY			<b>MBU ID Emp #:</b> 369111	

### Job Personnel

HES Emp Name	Exp Hrs	Emp #	HES Emp Name	Exp Hrs	Emp #	HES Emp Name	Exp Hrs	Emp #
CALDWELL, JEFFREY S	17	369111	LYNGSTAD, FREDRICK D	17	403742	ROMKEE, DALE Alan	17	488215
SLAUGHTER, JESSE Dean	17	454315						

### Equipment

HES Unit #	Distance-1 way	HES Unit #	Distance-1 way	HES Unit #	Distance-1 way	HES Unit #	Distance-1 way
10713212	120 mile	10744648L P	120 mile	10897849	120 mile	10951249	120 mile
10998508	120 mile						

### Job Hours

Date	On Location Hours	Operating Hours	Date	On Location Hours	Operating Hours	Date	On Location Hours	Operating Hours
03-25-11	4	0	03-26-11	13	4			
<b>TOTAL</b>			Total is the sum of each column separately					

### Job

Formation Name	Formation Depth (MD)	Top	Bottom	Form Type	Job depth MD	Job Depth TVD	Water Depth	Perforation Depth (MD)	From	To
				BHST	2680. ft	2680. ft				
							Wk Ht Above Floor			
						5. ft				

### Job Times

Date	Time	Time Zone
25 - Mar - 2011	12:00	MST
25 - Mar - 2011	20:00	MST
26 - Mar - 2011	04:17	MST
26 - Mar - 2011	10:53	MST
26 - Mar - 2011	13:00	MST

### Well Data

Description	New / Used	Max pressure psig	Size in	ID in	Weight lbm/ft	Thread	Grade	Top MD ft	Bottom MD ft	Top TVD ft	Bottom TVD ft
14 3/4" Open Hole				14.75				.	2690.		
9 5/8 Surface Casing	New		9.625	8.921	36.			.	2690.		

### Sales/Rental/3<sup>rd</sup> Party (HES)

Description	Qty	Qty uom	Depth	Supplier
PLUG,CMTG,TOP,9 5/8,HWE,8.16 MIN/9.06 MA	1	EA		
R/A DENSOMETER W/CHART RECORDER,/JOB,ZI	1	JOB		
PORT. DATA ACQUIS. W/OPTICEM RT W/HES	1	EA		
ADC (AUTO DENSITY CTRL) SYS, /JOB,ZI	1	JOB		

Tools and Accessories													
Type	Size	Qty	Make	Depth	Type	Size	Qty	Make	Depth	Type	Size	Qty	Make
Guide Shoe					Packer					Top Plug	9.625	1	
Float Shoe					Bridge Plug					Bottom Plug			
Float Collar					Retainer					SSR plug set			
Insert Float										Plug Container	9.625	1	
Stage Tool										Centralizers			
Miscellaneous Materials													
Gelling Agt			Conc		Surfactant			Conc		Acid Type		Qty	Conc %
Treatment Fld			Conc		Inhibitor			Conc		Sand Type		Size	Qty
Fluid Data													
Stage/Plug #: 1													
Fluid #	Stage Type	Fluid Name			Qty	Qty uom	Mixing Density lbm/gal	Yield ft3/sk	Mix Fluid Gal/sk	Rate bbl/min	Total Mix Fluid Gal/sk		
1	Water Spacer				20	bbl	8.33	.0	.0	.0			
2	Gel Spacer				20	bbl	.	.0	.0	.0			
3	Water Spacer				20	bbl	.	.0	.0	.0			
4	Lead Cement	VERSACEM (TM) SYSTEM (452010)			825	sacks	12.3	2.33	12.62		12.62		
12.62 Gal		FRESH WATER											
5	Tail Cement	VERSACEM (TM) SYSTEM (452010)			160	sacks	12.8	2.07	10.67		10.67		
10.67 Gal		FRESH WATER											
6	Displacement				203.6	bbl	.	.0	.0	.0			
7	Topout Cement	HALCEM (TM) SYSTEM (452986)			205	sacks	12.5	1.97	10.96		10.96		
10.96 Gal		FRESH WATER											
Calculated Values		Pressures			Volumes								
Displacement	203.6	Shut In: Instant			Lost Returns		Cement Slurry		401.4	Pad			
Top Of Cement	SURFACE	5 Min			Cement Returns		5	Actual Displacement		203.6	Treatment		
Frac Gradient		15 Min			Spacers		60	Load and Breakdown			Total Job		665
Rates													
Circulating	6	Mixing		6	Displacement		8	Avg. Job		6			
Cement Left In Pipe	Amount	45.95 ft	Reason		Shoe Joint								
Frac Ring # 1 @	ID	Frac ring # 2 @		ID	Frac Ring # 3 @		ID	Frac Ring # 4 @		ID			
The Information Stated Herein Is Correct					Customer Representative Signature								

*The Road to Excellence Starts with Safety*

<b>Sold To #:</b> 344034	<b>Ship To #:</b> 2844957	<b>Quote #:</b>	<b>Sales Order #:</b> 7841888
<b>Customer:</b> OXY GRAND JUNCTION EBUSINESS		<b>Customer Rep:</b> Benevides, Victor	
<b>Well Name:</b> CC	<b>Well #:</b> 697-05-78B	<b>API/UWI #:</b> 05-045-18126	
<b>Field:</b> GRAND VALLEY	<b>City (SAP):</b>	<b>County/Parish:</b> Garfield	<b>State:</b> Colorado
<b>Legal Description:</b>			
<b>Lat:</b> N 39.542 deg. OR N 39 deg. 32 min. 31.171 secs.		<b>Long:</b> W 108.238 deg. OR W -109 deg. 45 min. 42.628 secs.	
<b>Contractor:</b> H&P Drilling		<b>Rig/Platform Name/Num:</b> H&P 353	
<b>Job Purpose:</b> Cement Surface Casing			<b>Ticket Amount:</b>
<b>Well Type:</b> Development Well		<b>Job Type:</b> Cement Surface Casing	
<b>Sales Person:</b> DUNNING, DUSTIN		<b>Srvc Supervisor:</b> CALDWELL, JEFFREY	<b>MBU ID Emp #:</b> 369111

Activity Description	Date/Time	Cht #	Rate bbl/min	Volume bbl		Pressure psig		Comments
				Stage	Total	Tubing	Casing	
Call Out	03/25/2011 12:00							ELITE #6
Pre-Convoy Safety Meeting	03/25/2011 14:00							ALL PERSONNEL ASSOCIATED WITH JOB ATTENDED.
Crew Leave Yard	03/25/2011 14:30							
Arrive At Loc	03/25/2011 20:00							CASING WAS STILL BEING RUN.
Safety Meeting	03/26/2011 01:45							ALL PERSONNEL ASSOCIATED WITH JOB ATTENDED.
Rig-Up Equipment	03/26/2011 02:00							
Pre-Job Safety Meeting	03/26/2011 03:45							ALL PERSONNEL ASSOCIATED WITH JOB ATTENDED.
Start Job	03/26/2011 04:17							TD:2700', TP:2680', SJ:45.95', MUF:9.4 PPG, 14 3/4" OH.
Prime Pumps	03/26/2011 04:19		2	2			80.0	H2O
Test Lines	03/26/2011 04:21					3200.0		TEST GOOD
Pump Spacer 1	03/26/2011 04:25		6	20			235.0	H2O
Pump Spacer 2	03/26/2011 04:29							5 GALLONS LGC. 2.5 GALLONS PER 10 BBLs.
Pump Spacer 1	03/26/2011 04:32							H2O

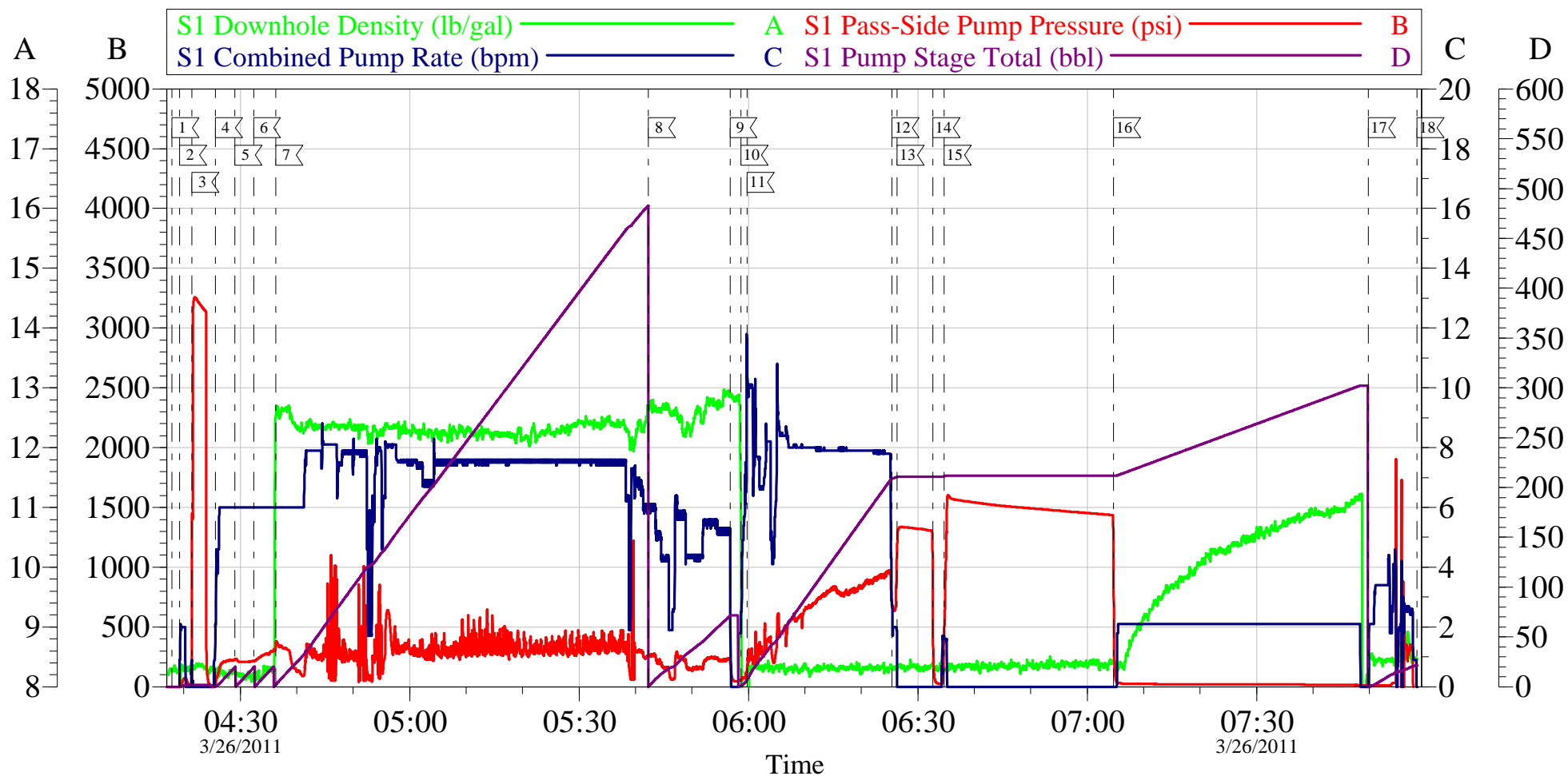
Activity Description	Date/Time	Cht #	Rate bbl/min	Volume bbl		Pressure psig		Comments
				Stage	Total	Tubing	Casing	
Pump Lead Cement	03/26/2011 04:36		7.5	342.4			350.0	160 SKS 12.3 PPG 2.33 CUFT/SAK 12.62 GAL/SAK. WE DID NOT GET RETURNS UNTIL 285 BBLS GONE ON LEAD CEMENT.
Pump Tail Cement	03/26/2011 05:42		5	59			250.0	SKS 12.8 PPG 2.07 CUFT/SAK 10.67 GAL/SAK. GOOD RETURNS.
Shutdown	03/26/2011 05:56							
Drop Top Plug	03/26/2011 05:58							PLUG AWAY.
Pump Displacement	03/26/2011 05:59		8	203.6			930.0	H2O. LOST RETURNS @117 GONE INTO DISPLACEMENT.
Slow Rate	03/26/2011 06:25		2	90			650.0	
Bump Plug	03/26/2011 06:26		2	203.6			930.0	PLUG BUMPED.
Check Floats	03/26/2011 06:32							FLOATS HELD.1 BBL BACK.
Other	03/26/2011 06:34						1500.0	CASING TEST. HELD 1500 PSI ON CASING FOR THIRTY MINUTES. WE THEN PUMPED 10 BBLS OF SUGAR H2O DOWN PARACITE.
End Job	03/26/2011 07:58							AS PER COMPANY REP WE PUMPED 100 SKS LESS OF LEAD THAN THE JOB DESIGN.COMPANY REPZ DID NOT WANT TO MUCH CEMENT TO SURFACE.
Other	03/26/2011 09:00							HALLIBURTON EE WAS INJURED ON JOB DUE TO A GRATE FALLING ON HIS HEAD. WE STOPPED WHAT WE WERE DOING LET THE COMPANY REP KNOW WHAT HAPPENED. AND CONTACTED AXIOM FOR FURTHER ADVICE.

## Cementing Job Log

Activity Description	Date/Time	Cht #	Rate bbl/ min	Volume bbl		Pressure psig		Comments
				Stage	Total	Tubing	Casing	
Start Job	03/26/2011 09:54							TOP OUT JOB.
Pump Spacer 1	03/26/2011 09:55		1	1			36.0	H2O
Pump Cement	03/26/2011 10:02		1.5	72			69.0	TOP OUT CEMENT. 12.5 PPG 1.97 CUFT/SAK 10.96 GAL/SAK
Shutdown	03/26/2011 10:52							
End Job	03/26/2011 10:53							5 BBLS OF CEMENT TO SURFACE
Post-Job Safety Meeting (Pre Rig-Down)	03/26/2011 11:00							ALL PERSONNEL ASSOCIATED WITH JOB ATTENDED.
Rig-Down Equipment	03/26/2011 11:15							
Crew Leave Location	03/26/2011 13:00							THANK YOU FOR CHOOSING HALLIBURTON, JEFF CALDWELL AND CREW.

# OXY

## CC 697-05-78B Surface



Customer: Oxy  
Well Description: CC 697-05-78B  
Company Rep: George Coombs

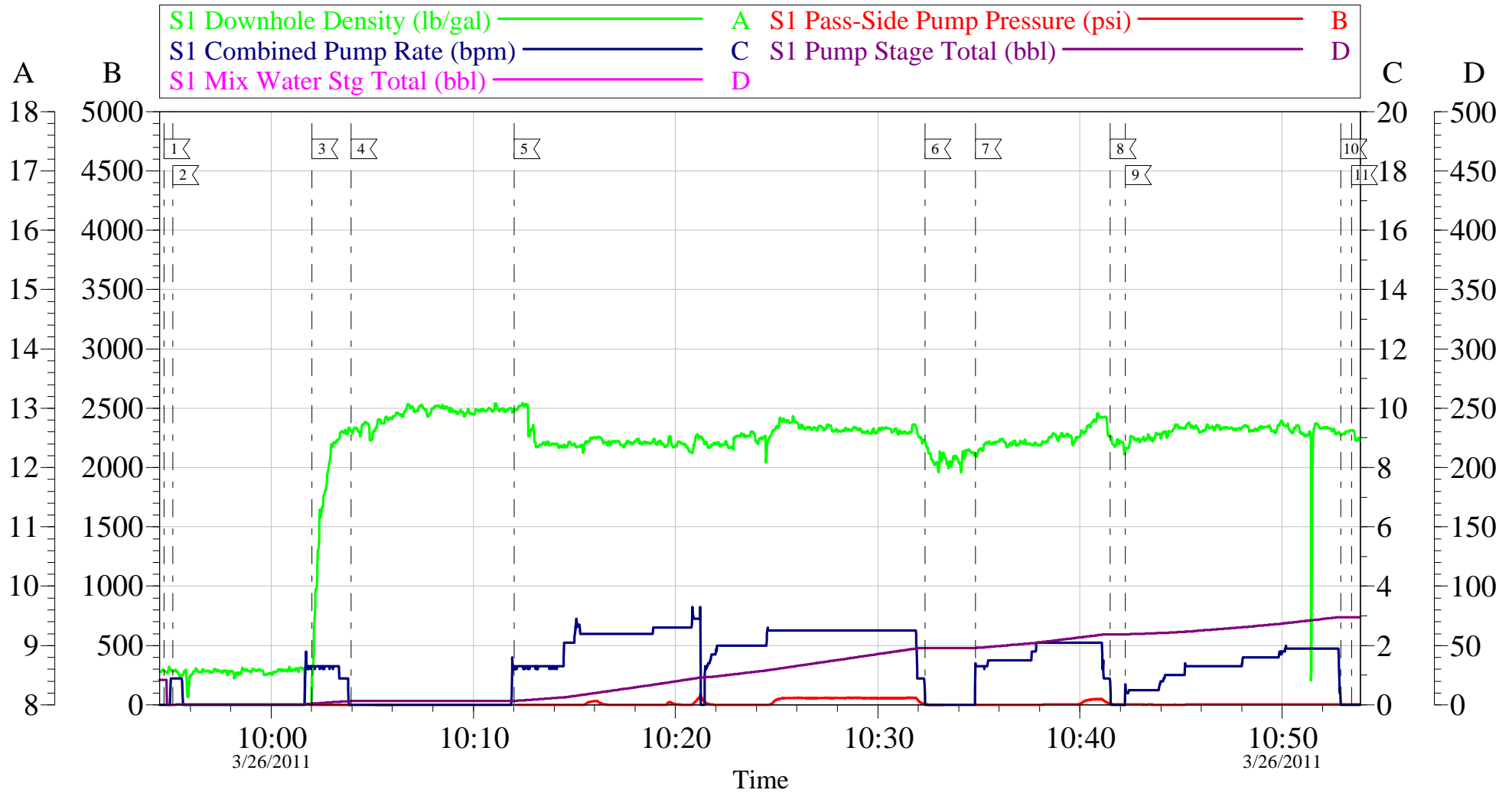
Job Date: 26-Mar-2011  
Job Type: Surface  
Cement Supervisor: Jeff Caldwell

Sales Order #: 7841888  
ADC Used: Yes  
Elite #: 6/Jesse Slaughter

OptiCem v6.4.2  
26-Mar-11 08:32

# OXY

## TOP OUT CC 697-05-78B



Local Event Log					
1 Start Job	09:54:42	2 Pump H2O Ahead	09:55:08	3 Pump Cement	10:02:01
4 Shut Down	10:03:57	5 Resume Pumping	10:12:01	6 Shut Down	10:32:21
7 Resume Pumping	10:34:50	8 Shut Down	10:41:30	9 Resume Pumping	10:42:15
10 Shut Down	10:52:54	11 End Job	10:53:26		

Customer: Oxy	Job Date: 26-Mar-2011	Sales Order #: 7841888
Well Description: CC 697-05-78B	Job Type: Top Out	ADC Used: Yes
Company Rep: Henry Coombs	Cement Supervisor: Jeff Caldwell	Elite #: 5/Jesse Slaughter

OptiCem v6.4.2  
26-Mar-11 11:31