
OXY GRAND JUNCTION EBUSINESS

**CC 697-08-06A
GRAND VALLEY
Garfield County , Colorado**

Cement Surface Casing
22-Mar-2011

Post Job Report

The Road to Excellence Starts with Safety

Sold To #: 344034	Ship To #: 2844067	Quote #:	Sales Order #: 7838658
Customer: OXY GRAND JUNCTION EBUSINESS	Customer Rep: VILLEGAS, ALEX		
Well Name: CC	Well #: 697-08-06A	API/UWI #: 05-045-18127	
Field: GRAND VALLEY	City (SAP): PARACHUTE	County/Parish: Garfield	State: Colorado
Lat: N 39.542 deg. OR N 39 deg. 32 min. 31.11 secs.	Long: W 108.238 deg. OR W -109 deg. 45 min. 42.574 secs.		
Contractor: H&P 353	Rig/Platform Name/Num: H&P 353		
Job Purpose: Cement Surface Casing			
Well Type: Development Well	Job Type: Cement Surface Casing		
Sales Person: DUNNING, DUSTIN	Srvc Supervisor: STILLSON, ERIC	MBU ID Emp #: 393789	

Job Personnel

HES Emp Name	Exp Hrs	Emp #	HES Emp Name	Exp Hrs	Emp #	HES Emp Name	Exp Hrs	Emp #
COSTELDIA, BROCK James	18	476115	HEITZ, CHAD	18	446290	STILLSON, ERIC W	18	393789
WEAVER, CARLTON Russell	18	457698						

Equipment

HES Unit #	Distance-1 way	HES Unit #	Distance-1 way	HES Unit #	Distance-1 way	HES Unit #	Distance-1 way
10053558	120 mile	10567589C	120 mile	10784064	120 mile	10951246	120 mile
10995027	120 mile	11006314	120 mile	6543	120 mile		

Job Hours

Date	On Location Hours	Operating Hours	Date	On Location Hours	Operating Hours	Date	On Location Hours	Operating Hours
03-21-11	15	4	03-22-11	3	1			

TOTAL Total is the sum of each column separately

Job

Formation Name	Top	Bottom	Called Out	Date	Time	Time Zone
Formation Depth (MD)			On Location	21 - Mar - 2011	09:30	MST
Form Type		BHST	Job Started	21 - Mar - 2011	15:58	MST
Job depth MD	2692. ft	Job Depth TVD	2692. ft	Job Completed	22 - Mar - 2011	00:29
Water Depth		Wk Ht Above Floor	4. ft	Departed Loc	22 - Mar - 2011	02:30
Perforation Depth (MD)	From	To				

Well Data

Description	New / Used	Max pressure psig	Size in	ID in	Weight lbm/ft	Thread	Grade	Top MD ft	Bottom MD ft	Top TVD ft	Bottom TVD ft
OPEN HOLE SECTION				14.75				.	2720.		
SURFACE CASING	Unknown		9.625	8.921	36.			.	2692.		

Sales/Rental/3rd Party (HES)

Description	Qty	Qty uom	Depth	Supplier
PLUG,CMTG,TOP,9 5/8,HWE,8.16 MIN/9.06 MA	1	EA		

Tools and Accessories

Type	Size	Qty	Make	Depth	Type	Size	Qty	Make	Depth	Type	Size	Qty	Make
Guide Shoe					Packer					Top Plug	9.625	1	
Float Shoe					Bridge Plug					Bottom Plug			
Float Collar					Retainer					SSR plug set			
Insert Float										Plug Container	9.625	1	
Stage Tool										Centralizers			

Miscellaneous Materials

Gelling Agt	Conc	Surfactant	Conc	Acid Type	Qty	Conc	%
Treatment Fld	Conc	Inhibitor	Conc	Sand Type	Size	Qty	

Fluid Data									
Stage/Plug #: 1									
Fluid #	Stage Type	Fluid Name	Qty	Qty uom	Mixing Density lbm/gal	Yield ft ³ /sk	Mix Fluid Gal/sk	Rate bbl/min	Total Mix Fluid Gal/sk
1	Water Spacer		20.00	bbl	8.33	.0	.0	5.0	
2	Gel Water	SUPER FLUSH 101 - SBM (12199)	20.00	bbl	8.4	.0	.0	5.0	
	42 gal/bbl	FRESH WATER							
	0.25 gal/bbl	LGC-36 UC, BULK (101582749)							
3	Water Spacer		20.00	bbl	8.33	.0	.0	6.0	
4	Lead Cement	VERSACEM (TM) SYSTEM (452010)	1024.0	sacks	12.3	2.33	12.62	6.0	12.62
	12.62 Gal	FRESH WATER							
5	Tail Cement	VERSACEM (TM) SYSTEM (452010)	180.0	sacks	12.8	2.07	10.67	4.0	10.67
	10.67 Gal	FRESH WATER							
6	Displacement		204.00	bbl	8.33	.0	.0	6.0	
7	Topout Cement	HALCEM (TM) SYSTEM (452986)	51.0	sacks	12.5	1.97	10.96	2.5	10.96
	10.96 Gal	FRESH WATER							
Calculated Values		Pressures		Volumes					
Displacement	204	Shut In: Instant		Lost Returns		Cement Slurry	509	Pad	
Top Of Cement	SURFACE	5 Min		Cement Returns	190	Actual Displacement	204	Treatment	
Frac Gradient		15 Min		Spacers	60	Load and Breakdown		Total Job	
Rates									
Circulating	RIG	Mixing	6	Displacement	6	Avg. Job	6		
Cement Left In Pipe	Amount	46 ft	Reason	Shoe Joint					
Frac Ring # 1 @	ID	Frac ring # 2 @	ID	Frac Ring # 3 @	ID	Frac Ring # 4 @	ID		
The Information Stated Herein Is Correct				Customer Representative Signature					

The Road to Excellence Starts with Safety

Sold To #: 344034		Ship To #: 2844067		Quote #:		Sales Order #: 7838658	
Customer: OXY GRAND JUNCTION EBUSINESS				Customer Rep: VILLEGAS, ALEX			
Well Name: CC			Well #: 697-08-06A			API/UWI #: 05-045-18127	
Field: GRAND VALLEY		City (SAP): PARACHUTE		County/Parish: Garfield		State: Colorado	
Legal Description:							
Lat: N 39.542 deg. OR N 39 deg. 32 min. 31.11 secs.				Long: W 108.238 deg. OR W -109 deg. 45 min. 42.574 secs.			
Contractor: H&P 353			Rig/Platform Name/Num: H&P 353				
Job Purpose: Cement Surface Casing						Ticket Amount:	
Well Type: Development Well			Job Type: Cement Surface Casing				
Sales Person: DUNNING, DUSTIN			Srvc Supervisor: STILLSON, ERIC			MBU ID Emp #: 393789	

Activity Description	Date/Time	Cht #	Rate bbl/min	Volume bbl		Pressure psig		Comments
				Stage	Total	Tubing	Casing	
Call Out	03/21/2011 03:00							9 5/8 SURFACE, OXY, H&P 353, CC 697- 08-06A
Pre-Convoy Safety Meeting	03/21/2011 05:30							ENTIRE CREW, OBSERVE ALL SAFE DRIVING PROCEDURES
Arrive At Loc	03/21/2011 09:30							RIG RUNNING CASING.
Assessment Of Location Safety Meeting	03/21/2011 13:30							REVIEWED EMERGENCY PLAN, ASSESSED WORK AREA AND SPOTTED EQUIPMENT.
Pre-Rig Up Safety Meeting	03/21/2011 13:50							ENTIRE CREW, WALKED THROUGH RIG UP LOOKING FOR HAZARDS.
Rig-Up Equipment	03/21/2011 14:00							1 PICK UP, 1 HT400 PUMP TRUCK, 1 660 BULK CEMENT TRUCK, 1 BULK CEMENT SILO, 1 BULK CEMENT STORAGE BIN, 1 QUICK LATCH HEAD WITH PLUG.
Pre-Job Safety Meeting	03/21/2011 15:40							ENTIRE CREW, CO REP AND RIG CREW.
Start Job	03/21/2011 15:58							TD 2720 TP 2692 SJ 46 FC 2646 MW 9.2 PPG, 9 5/8 36# CASING IN 14 3/4 HOLE, PARASITE SET AT 2516.
Pump Water	03/21/2011 15:59		2	2			38.0	FILL LINES BEFORE TESTING

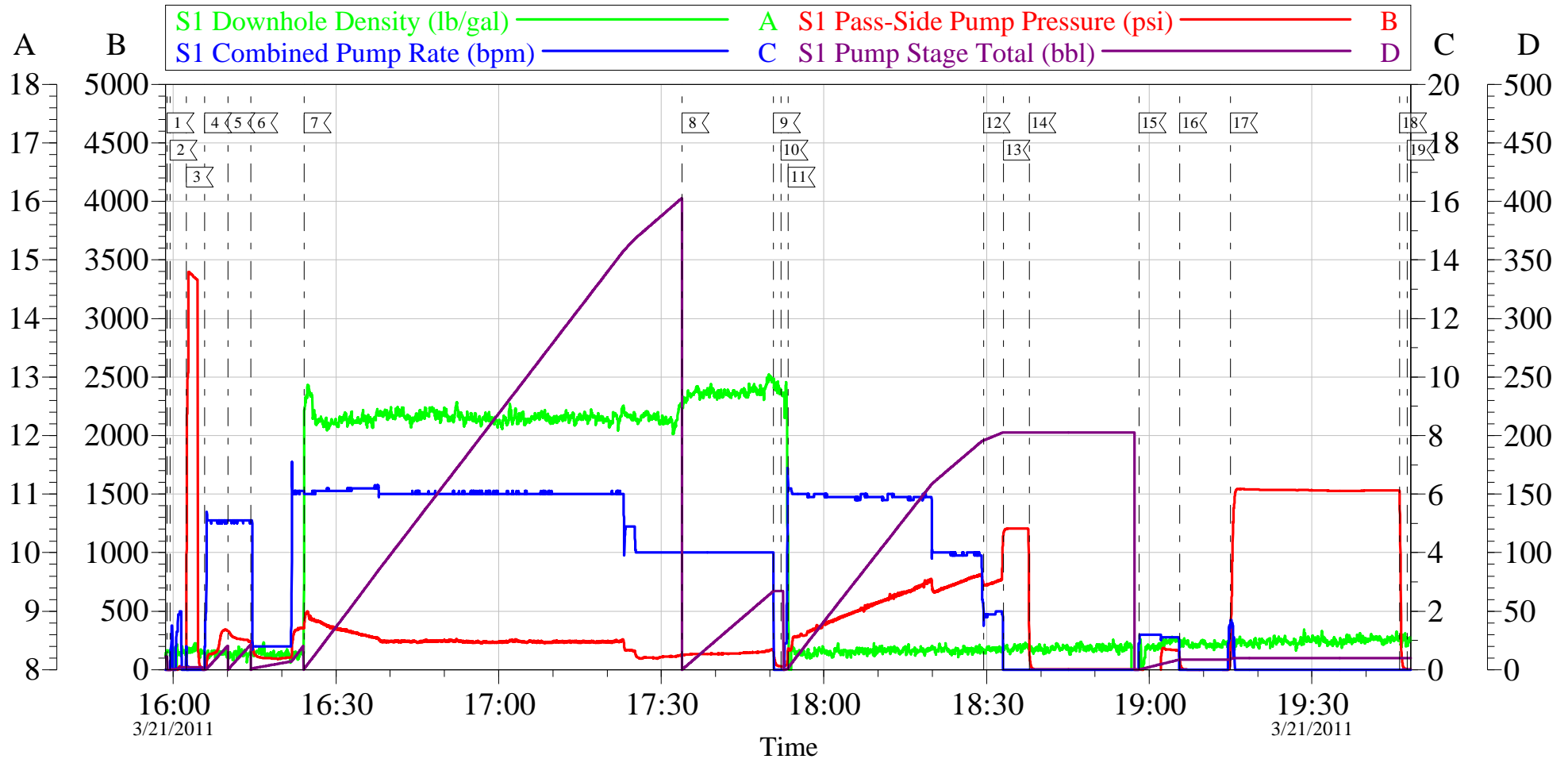
Activity Description	Date/Time	Cht #	Rate bbl/min	Volume bbl		Pressure psig		Comments
				Stage	Total	Tubing	Casing	
Pressure Test	03/21/2011 16:02		0.5	0.1			3330.0	HELD PRESSURE FOR 2 MIN, PRESSURE HELD, NO LEAKS.
Pump Spacer 1	03/21/2011 16:05		5	20			340.0	FRESH WATER
Pump Spacer 2	03/21/2011 16:10		5	20			300.0	GEL SPACER, 20 BBLS WATER WITH 5 GAL LGC.
Pump Spacer 1	03/21/2011 16:14		6	20			360.0	FRESH WATER, SLOWED TO 1 BPM AND PREMIXED CEMENT TUB AND WEIGHED WITH SCALES. SPED TO 6 BPM AT 8 BBLS GONE.
Pump Lead Cement	03/21/2011 16:24		6	424.9			425.0	1024 SKS VERSACEM, 12.3 PPG, 2.33 CUFT/SK, 12.62 GAL/SK, 7 BOXES TUFF FIBER MIXED IN DOWNHOLE SIDE OF TUB ON THE FLY. SLOWED RATE TO 4 BPM AT 370 BBLS GONE DUE TO CELLAR PUMP NOT KEEPING UP.
Pump Tail Cement	03/21/2011 17:33		4	66.4			175.0	180 SKS VERSACEM, 12.8 PPG, 2.07 CUFT/SK, 10.67 GAL/SK,
Shutdown	03/21/2011 17:50							
Drop Top Plug	03/21/2011 17:52							VARIFIED PLUG LEFT CONTAINER.
Pump Displacement	03/21/2011 17:53		6	204.5			810.0	FRESH WATER, SLOWED RATE TO 4 BPM AT 160 BBLS GONE DUE TO CELLAR PUMP NOT KEEPING UP.
Slow Rate	03/21/2011 18:29		2	194			770.0	SLOWED RATE TO 2 BPM TO BUMP PLUG.
Bump Plug	03/21/2011 18:33		2	204.5			1210.0	PLUG LANDED AT 770 PSI, BUMPED UP TO 1210 PSI AND HELD FOR 5 MIN PER CO REP.

Activity Description	Date/Time	Cht #	Rate bbl/min	Volume bbl		Pressure psig		Comments
				Stage	Total	Tubing	Casing	
Check Floats	03/21/2011 18:37							FLOATS HELD, WHEN RELEASED PRESSURE GOT 1 BBL OF WATER BACK TO TRUCK.
Safety Huddle	03/21/2011 18:40							RIG UP IRON TO CELLAR TO PUMP THROUGH PARASITE.
Pump Water	03/21/2011 18:58		1	10			180.0	10 BBLS WATER WITH 10 LBS SUAR PUMPED TO CLEAR PARASITE, CAUGHT PRESSURE AND RETURNS AT 6 BBLS GONE.
Shutdown	03/21/2011 19:05							PARASITE CLEAR.
Safety Huddle	03/21/2011 19:06							RIG UP IRON TO TEST CASING.
Pressure Up	03/21/2011 19:14		1	1			1543.0	PRESSURE UP TO 1500 PSI TO TEST CASING.
Release Casing Pressure	03/21/2011 19:46							RELEASED PRESSURE AT 1532 PSI, GOOD TEST.
Safety Huddle	03/21/2011 23:30							RIG UP TO TOPOUT. USED TOPOUT TRUCK WITH 250 SKS REMAINING FROM PREVIOUS WELL, IT WAS CHARGED ON THAT TICKET.
Pump Cement	03/22/2011 00:01		2.5	9.5	9.5		114.0	TOPOUT CEMENT, 12.5 PPG, 1.97 CUFT/SK, 10.96 GAL/SK. CEMENT TO SURFACE AT 9 BBLS GONE.
Shutdown	03/22/2011 00:05							SHUTDOWN TO SEE IF CEMENT FALLS BACK
Pump Cement	03/22/2011 00:12		1.5	4.5	14		35.0	TOPOUT CEMENT, 12.5 PPG, 1.97 CUFT/SK, 10.96 GAL/SK, CEMENT DID NOT FALL BACK, CEMENT TO SURFACE RIGHT AWAY.

Activity Description	Date/Time	Cht #	Rate bbl/min	Volume bbl		Pressure psig		Comments
				Stage	Total	Tubing	Casing	
Shutdown	03/22/2011 00:14							WAIT 10 MINUTES THEN FINISH PUMPING REST OF TUB.
Pump Cement	03/22/2011 00:24		1.5	4	18		30.0	TOPOUT CEMENT, 12.5 PPG, 1.97 CUFT/SK, 10.96 GAL/SK, PUMPED 18 BBLs TOTAL, 51 SKS USED, APPROX 199 SKS REMAINING ON BULK TRUCK WILL BE LEFT ON LOCATION FOR NEXT JOB.
Pump Water	03/22/2011 00:27		1.5	1.5			20.0	CHASE WITH WATER TO CLEAR OUT IRON AND 1 INCH PIPE.
Shutdown	03/22/2011 00:28							CEMENT DID NOT FALL BACK
End Job	03/22/2011 00:29							DID NOT RECIPROCATATE PIPE DURING JOB. GOOD RETURNS FROM LEAD CEMENT TO END, 190 BBLs OF CEMENT TO SURFACE DURING MAIN JOB AND TOPOUT, USED 120 LBS SUGAR.
Post-Job Safety Meeting (Pre Rig-Down)	03/22/2011 00:35							ENTIRE CREW
Rig-Down Equipment	03/22/2011 01:30							
Pre-Convoy Safety Meeting	03/22/2011 02:30							ENTIRE CREW, OBSERVE ALL SAFE DRIVING PROCEDURES
Crew Leave Location	03/22/2011 02:45							THANK YOU FOR USING HALLIBURTON, ERIC STILLSON AND CREW.

OXY

9 5/8 SURFACE

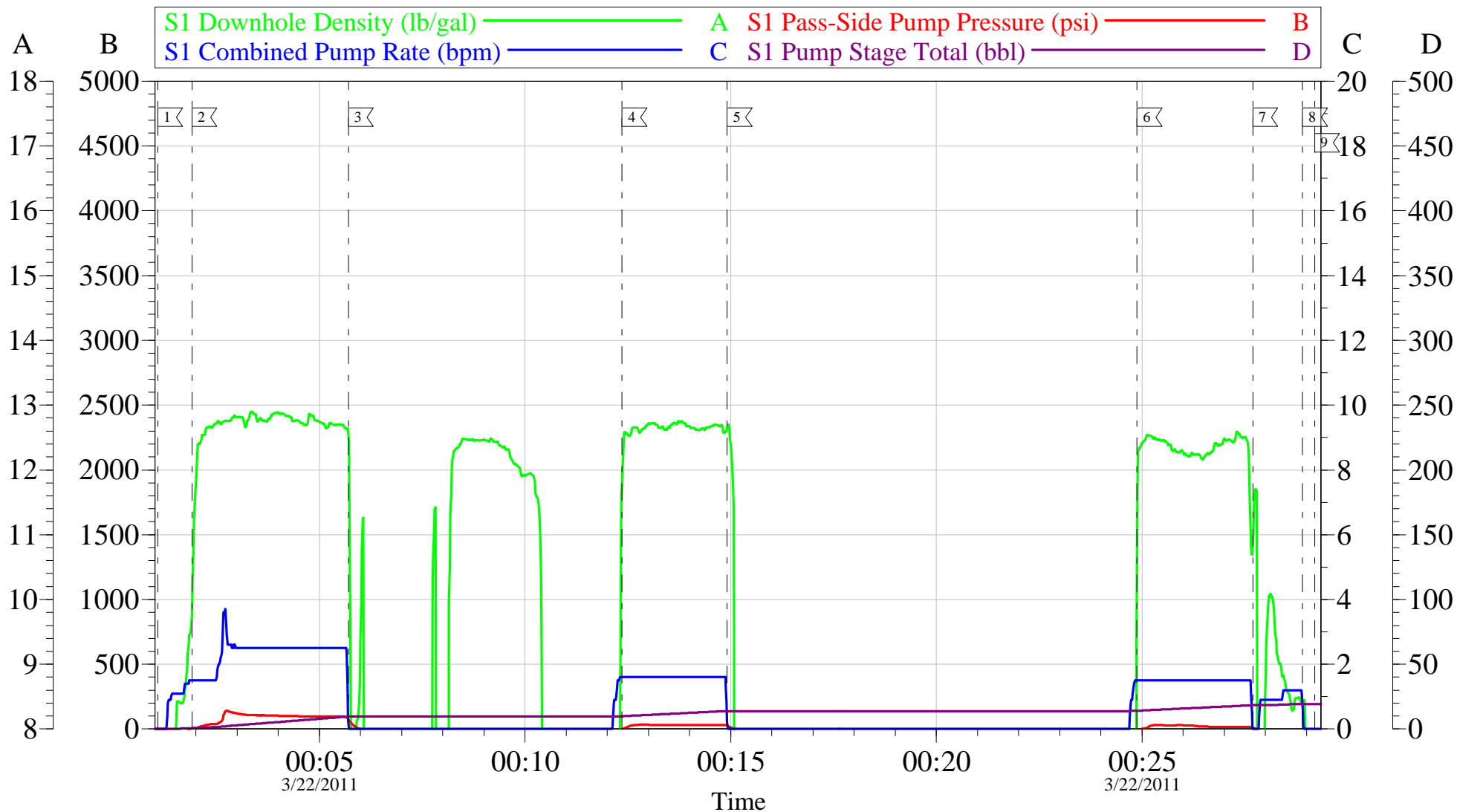


Local Event Log					
1	START JOB	15:58:50	2	FILL LINES	15:59:26
3	TEST LINES	16:02:25	4	PUMP WATER SPACER	16:05:47
5	PUMP LGC SPACER	16:10:03	6	PUMP WATER SPACER	16:14:20
7	PUMP LEAD CEMENT	16:24:07	8	PUMP TAIL CEMENT	17:33:49
9	SHUTDOWN	17:50:41	10	DROP PLUG	17:52:03
11	PUMP DISPLACEMENT	17:53:25	12	SLOW RATE	18:29:24
13	BUMP PLUG	18:33:04	14	CHECK FLOATS	18:37:50
15	CLEAR PARASITE	18:58:07	16	SHUTDOWN	19:05:37
17	CASING TEST	19:14:59	18	RELEASE PRESSURE	19:46:10
19	END JOB	19:47:32			

Customer: OXY	Job Date: 21-Mar-2011	Sales Order #: 7838658
Well Description: CC 697-08-06A	Job Type: SURFACE	ADC Used: YES
Company Rep: ALEX VILLEGAS	Cement Supervisor: ERIC STILLSON	Elite #: 3 RUSTY WEAVER

OXY

TOPOUT 9 5/8 SURFACE



Local Event Log					
1	START TOPOUT	00:01:04	2	PUMP CEMENT	00:01:54
					3 SHUTDOWN/CEMENT TO SURF 00:05:42
4	PUMP CEMENT	00:12:21	5	SHUTDOWN	00:14:54
					6 PUMP CEMENT 00:24:53
7	PUMP WATER	00:27:41	8	SHUTDOWN	00:28:54
					9 END JOB 00:29:12

Customer: OXY	Job Date: 21-Mar-2011	Sales Order #: 7838658
Well Description: CC 697-08-06A	Job Type: TOPOUT	ADC Used: YES
Company Rep: ALEX VILLEGAS	Cement Supervisor: ERIC STILLSON	Elite #: 3 RUSTY WEAVER

OptiCem v6.4.2
22-Mar-11 00:44