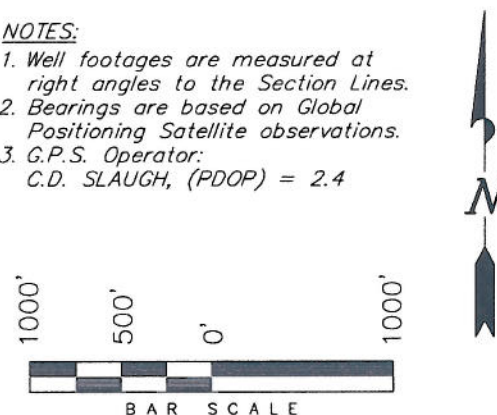


ENCANA OIL & GAS (USA) INC

WELL LOCATION, ENCANA FEE 24-8C
(K19CNE), LOCATED AS SHOWN IN LOT
3 OF SECTION 19, T6S, R92W, 6th P.M.
GARFIELD COUNTY, COLORADO.

1. Well footages are measured at right angles to the Section Lines.
2. Bearings are based on Global Positioning Satellite observations.
3. G.P.S. Operator:
C.D. SLAUGH, (PDOP) = 2.4



COLOREAD REGISTERED
LACY W. STEWART

A circular professional seal for Stacy W. Stewart, a Colorado Registered Professional Land Surveyor. The seal contains the text "COLORADO REGISTERED", "STACY W. STEWART", "# 30125", and "PROFESSIONAL LAND SURVEYOR". The date "02/24/11" is stamped at the bottom. A signature, "Stacy W. Stewart", is written across the seal.

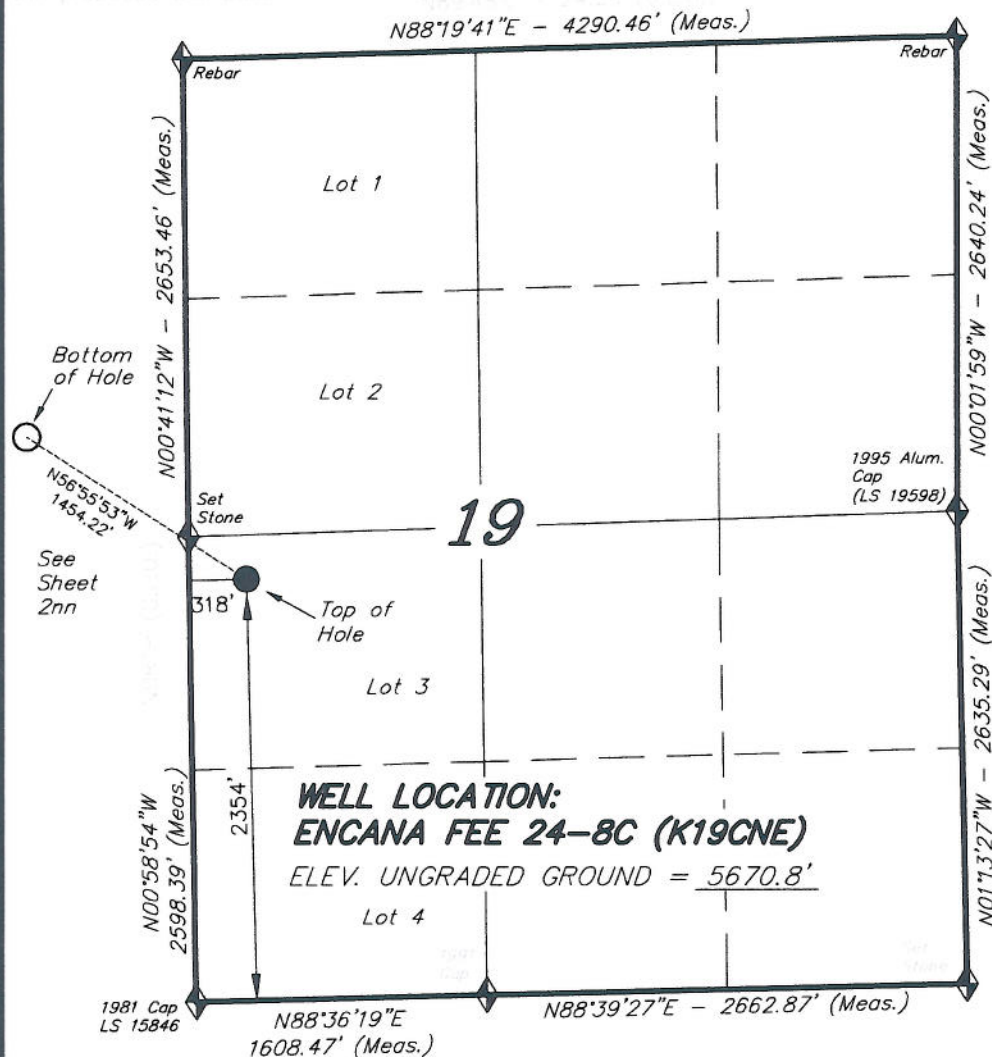
TRI STATE LAND SURVEYING & CONSULTING

180 NORTH VERNAL AVE. - VERNAL, UTAH 84078
(435) 781-2501

SHEET

 $2n$

OF 11



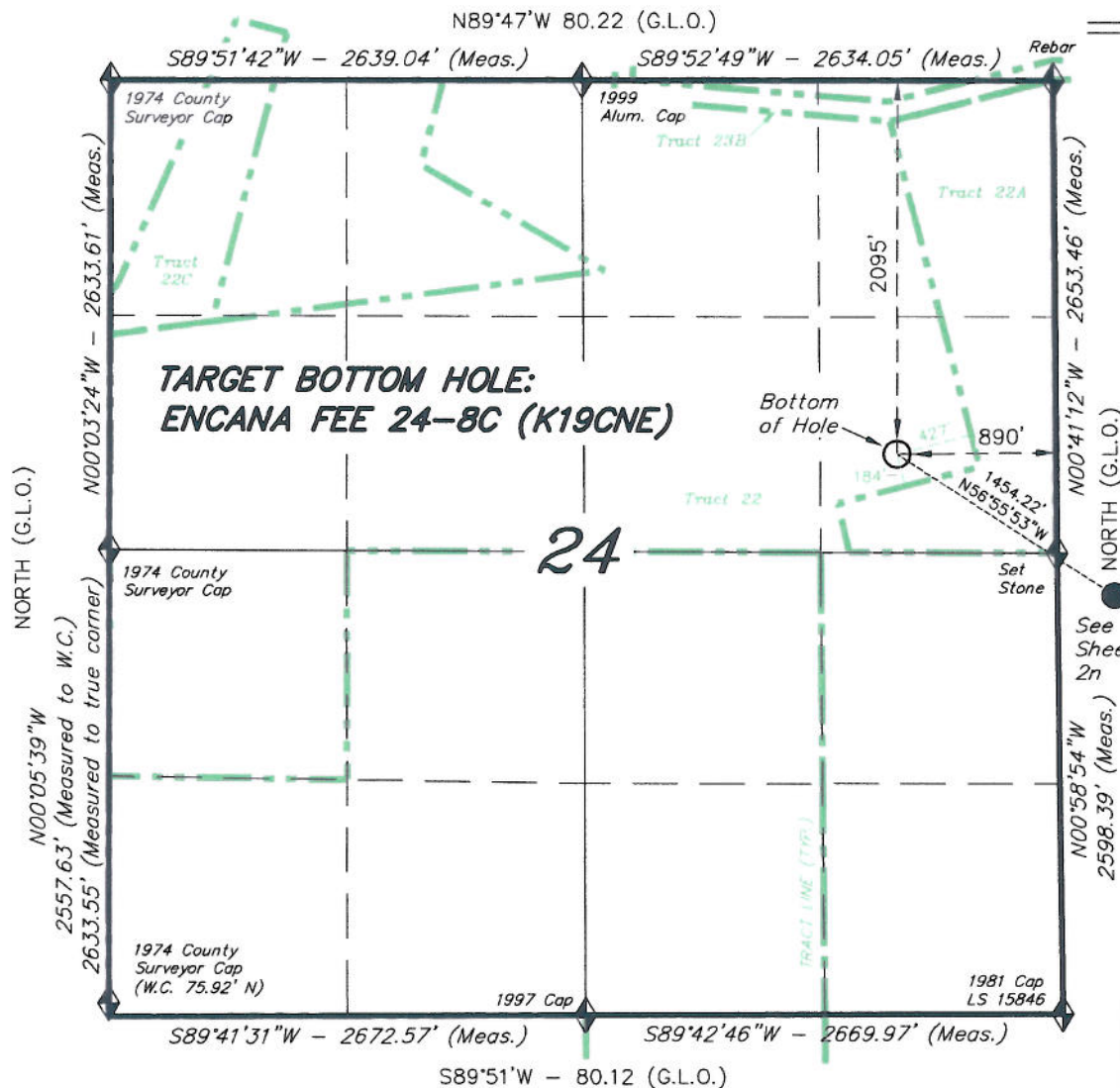
NAD 83 (SURFACE LOCATION)

LATITUDE = 39°30'40.58"
(39.511273)

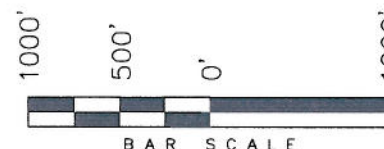
LONGITUDE = 107°42'49.70"
(107.713806)

T6S, R93W, 6th P.M.

ENCANA OIL & GAS (USA) INC



TARGET BOTTOM HOLE, ENCANA FEE 24-8C (K19CNE), LOCATED AS SHOWN IN THE SE 1/4 NE 1/4 OF SECTION 24, T6S, R93W, 6th P.M. GARFIELD COUNTY, COLORADO.



NOTES:

1. Well footages are measured at right angles to the Section Lines.
2. Bearings are based on Global Positioning Satellite observations.

THIS IS TO CERTIFY THAT THE ABOVE PLAT WAS PREPARED FROM FIELD NOTES OF SURVEYS MADE BY ME OR UNDER MY SUPERVISION. THE LOCATION HAS BEEN STAKED ON THE GROUND AS SHOWN ON THE PLAT, AND THAT THE SAME ARE TRUE AND CORRECT TO THE BEST OF MY KNOWLEDGE AND BELIEF.

[Signature]
30125
REGISTERED LAND SURVEYOR
REGISTRATION No. 30125
STATE OF COLORADO

TRI STATE LAND SURVEYING & CONSULTING

180 NORTH VERNAL AVE. - VERNAL, UTAH 84078
(435) 781-2501

DATE SURVEYED: 11-08-10	SURVEYED BY: C.D.S.	SHEET 2nn OF 11
DATE DRAWN: 12-23-10	DRAWN BY: L.C.S.	
REVISED: L.C.S. 02-24-11	SCALE: 1" = 1000'	

◆ = SECTION CORNERS LOCATED

Basis of elevation is the Rifle 2 Triangulation Station. 39°31'53.80" N Lat. & 107°47'07.78" W Long. (NAD 83). Elevation = 5323.1' (NAVD88).