

IMPROVEMENT NOTE:

See addendum to legal plat (sheet 25) for visible improvements within 400' of the proposed well post.

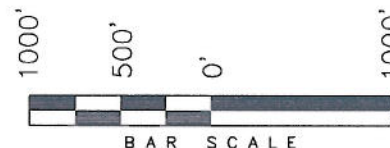
T6S, R92W, 6th P.M.

ENCANA OIL & GAS (USA) INC

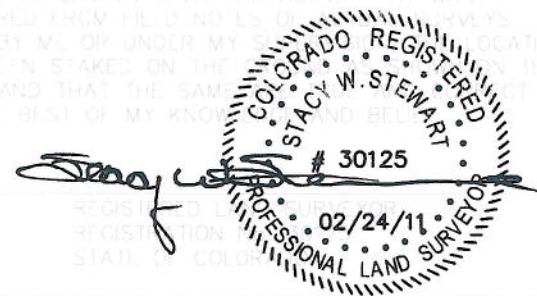
WELL LOCATION, ENCANA FEE 24-8C2 (K19CNE), LOCATED AS SHOWN IN LOT 3 OF SECTION 19, T6S, R92W, 6th P.M. GARFIELD COUNTY, COLORADO.

NOTES:

1. Well footages are measured at right angles to the Section Lines.
2. Bearings are based on Global Positioning Satellite observations.
3. G.P.S. Operator: C.D. SLAUGH, (PDOP) = 2.4



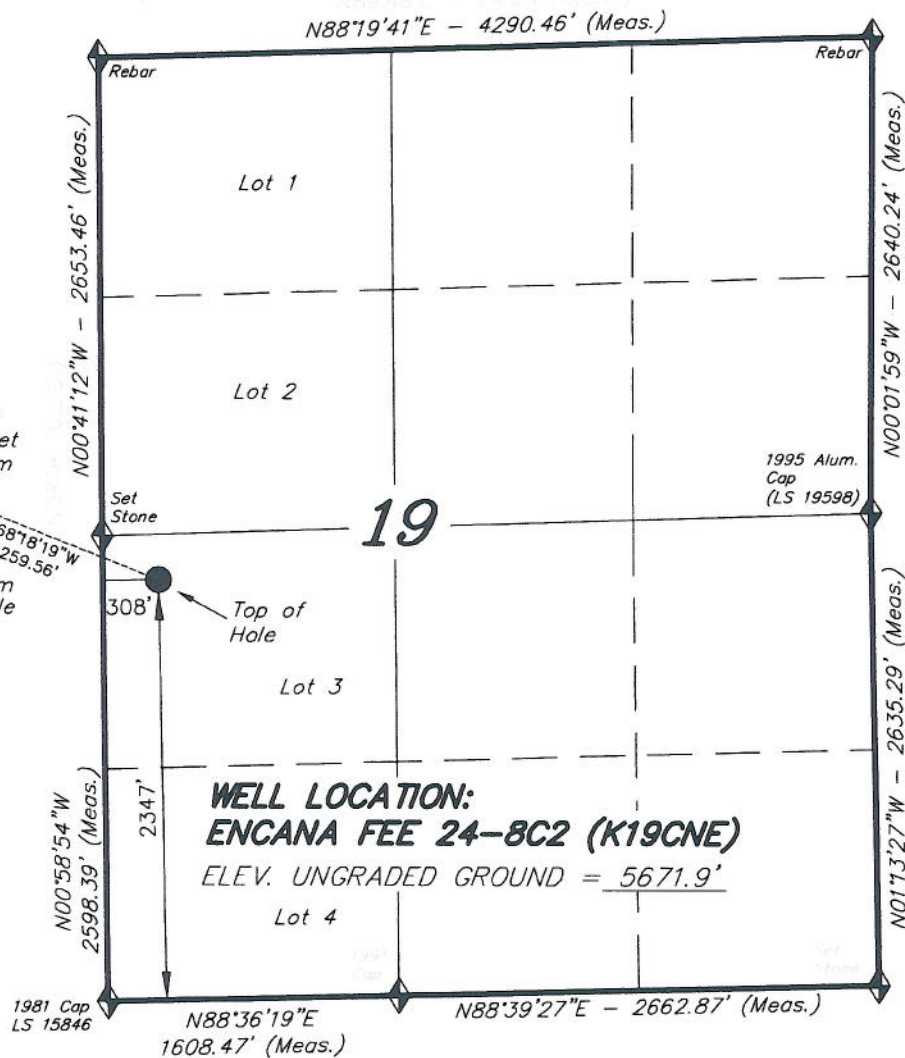
THIS IS TO CERTIFY THAT THE ABOVE PLAT WAS PREPARED FROM FIELD NOTES OR SURVEY MADE BY ME, OR UNDER MY SUPERVISION, AND THAT THE SAME IS TRUE TO THE BEST OF MY KNOWLEDGE AND BELIEF.



TRI STATE LAND SURVEYING & CONSULTING

180 NORTH VERNAL AVE. - VERNAL, UTAH 84078
(435) 781-2501

DATE SURVEYED: 11-08-10	SURVEYED BY: C.D.S.	SHEET 2m OF 11
DATE DRAWN: 12-23-10	DRAWN BY: L.C.S.	
REVISED: L.C.S. 02-24-11	SCALE: 1" = 1000'	



NAD 83 (SURFACE LOCATION)

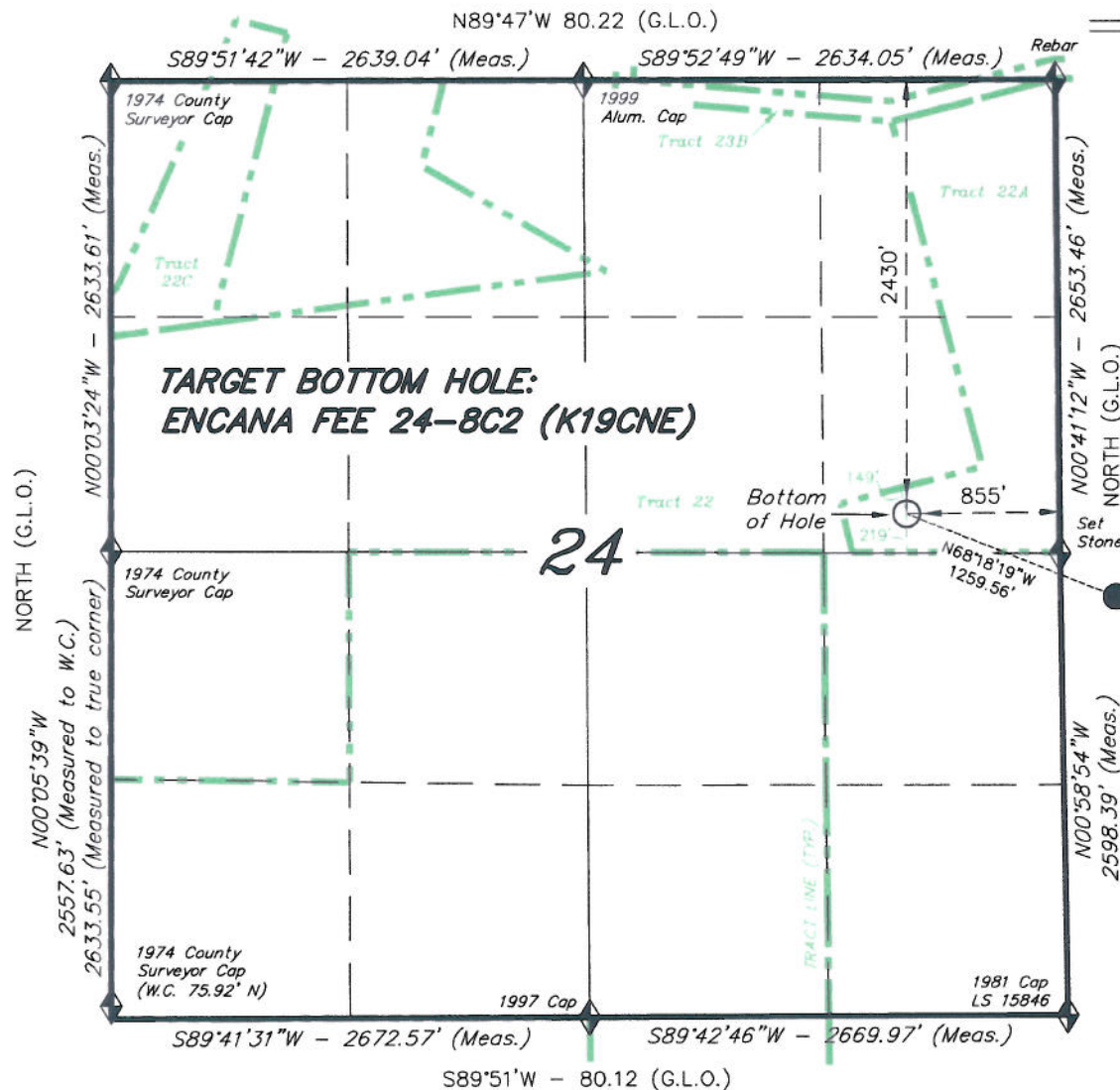
LATITUDE = 39°30'40.51"
(39.511254)
LONGITUDE = 107°42'49.82"
(107.713839)



Section Corners Located
Basis of Elevation is the Rule of Triangulation
Station: 39°3'53.80" N Lat. & 107°4'07.88" W
Long. (NAD 83). Elevation = 5323.1' (NAVD88).

T6S, R93W, 6th P.M.

ENCANA OIL & GAS (USA) INC



TARGET BOTTOM HOLE, ENCANA FEE 24-8C2 (K19CNE), LOCATED AS SHOWN IN THE SE 1/4 NE 1/4 OF SECTION 24, T6S, R93W, 6th P.M. GARFIELD COUNTY, COLORADO.



NOTES:

1. Well footages are measured at right angles to the Section Lines.
 2. Bearings are based on Global Positioning Satellite observations.
- Top of See Hole Sheet 2m

THIS IS TO CERTIFY THAT THE ABOVE PLAT WAS PREPARED FROM FIELD NOTES OF SURVEYS MADE BY ME OR UNDER MY SUPERVISION. THE LOCATION HAS BEEN STAKED ON THE GROUND AS SHOWN ON THE PLAT, AND THAT THE SAME ARE TRUE AND CORRECT TO THE BEST OF MY KNOWLEDGE AND BELIEF.

[Signature]
30125
REGISTERED LAND SURVEYOR
REGISTRATION No. 30125
STATE OF COLORADO
02/24/11

TRI STATE LAND SURVEYING & CONSULTING

180 NORTH VERNAL AVE. - VERNAL, UTAH 84078
(435) 781-2501

DATE SURVEYED: 11-08-10	SURVEYED BY: C.D.S.	SHEET 2mm OF 11
DATE DRAWN: 12-23-10	DRAWN BY: L.C.S.	
REVISED: L.C.S. 02-24-11	SCALE: 1" = 1000'	

◆ = SECTION CORNERS LOCATED

Basis of elevation is the Rifle 2 Triangulation Station. 39°31'53.80" N Lat. & 107°47'07.78" W Long. (NAD 83). Elevation = 5323.1' (NAVD88).