

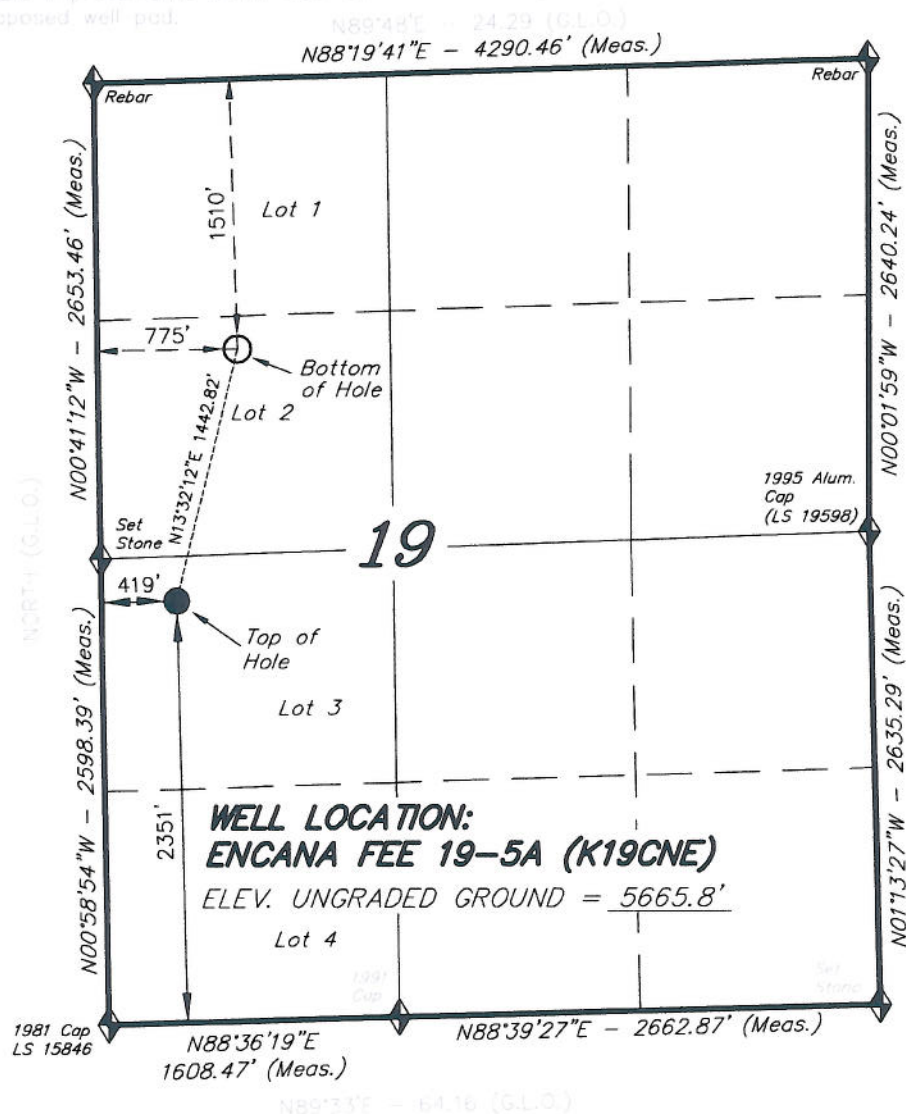
**IMPROVEMENT NOTE:**

See addendum to legal plat (sheet 2s)  
for visible improvements within 400' of  
the proposed well pad.

**T6S, R92W, 6th P.M.**

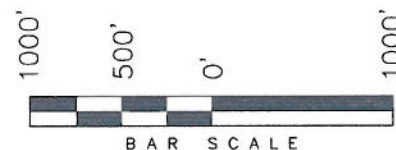
**ENCANA OIL & GAS (USA) INC**

WELL LOCATION, ENCANA FEE 19-5A  
(K19CNE), LOCATED AS SHOWN IN LOT  
3 OF SECTION 19, T6S, R92W, 6th P.M.  
GARFIELD COUNTY, COLORADO.



**NOTES:**

1. Well footages are measured at right angles to the Section Lines.
2. Bearings are based on Global Positioning Satellite observations.
3. G.P.S. Operator: C.D. SLAUGH, (PDOP) = 2.4



SECTION CORNERS LOCATED

Basis of elevation is the Rifle 2 Triangulation  
Station. 39°31'53.80" N Lat. & 107°47'07.78" W  
Long. (NAD 83). Elevation = 5323.1' (NAVD83).

**NAD 83 (SURFACE LOCATION)**

LATITUDE = 39°30'40.58"  
(39.511273)

LONGITUDE = 107°42'48.41"  
(107.713447)

**TRI STATE LAND SURVEYING & CONSULTING**

180 NORTH VERNAL AVE. - VERNAL, UTAH 84078  
(435) 781-2501

DATE SURVEYED:

11-08-10

SURVEYED BY: C.D.S.

DATE DRAWN:

12-23-10

DRAWN BY: J.L.S.

REVISED:

1-15-11

SCALE: 1" = 1000'

**SHEET**

**2h**

**OF 11**