

# ATLAS ROCKIES, LLC

Date: 1/24/2011  
 Prepared by: Maddie Lariviere  
 Lease: VIESELMEYER  
 Well Number: 843-5-32-L10  
 API: 05-095-06270-00  
 Location: Lot 10, SWNE, Sec. 5 T8N-R43W  
 BHL  
 Field: Amherst  
 Unit  
 County: Phillips  
 State: Colorado  
 GL: 3695'  
 KB: 3707'  
 Spud Date: 12/16/2010  
 Completion date: 2/4/2011  
 First gas sales

WI  
 NRI  
 Surface  
 Mineral  
 fee  
 fee

SURVEYS:  
 200 0.4  
 450 0.64  
 1000 0.52  
 1500 0.37  
 2000 0.21  
 2600 1.88

Geological tops  
 Surface 3695  
 Pierre Shale 335  
 Sharron Springs 2362  
 Niobrara Chalk 2412  
 Beecher Island  
 Carlile  
 TD 2700

A-sect Wellhead Inc LM-70 7 X 4 1/2 1500# Screw on mandrel  
 B-sect R&M LM-45 4 1/2 X 2 3/8 1500# Screw on mandrel  
 Tree

Surface Cement  
 Cement w/ 122 sk Portland 1/11 ASTM C 150 Cement  
 and displace w/690 gal of water Cir 6 brls cement to  
 the pit.. 50 ft cement left in the 7" sp. Pumped by Schaal  
 drilling. Plug down 1:15 PM 12/16/2010

Producing ZONE Niobrara  
 Hole Size 9 7/8  
 Surf Casing 7" 20# 12 jts meas 456.07  
 Shoe 468.07

0  
 Hole Size 6 1/4  
 Prod csg 4 1/2 11.6# 65 jts meas: 2677.29

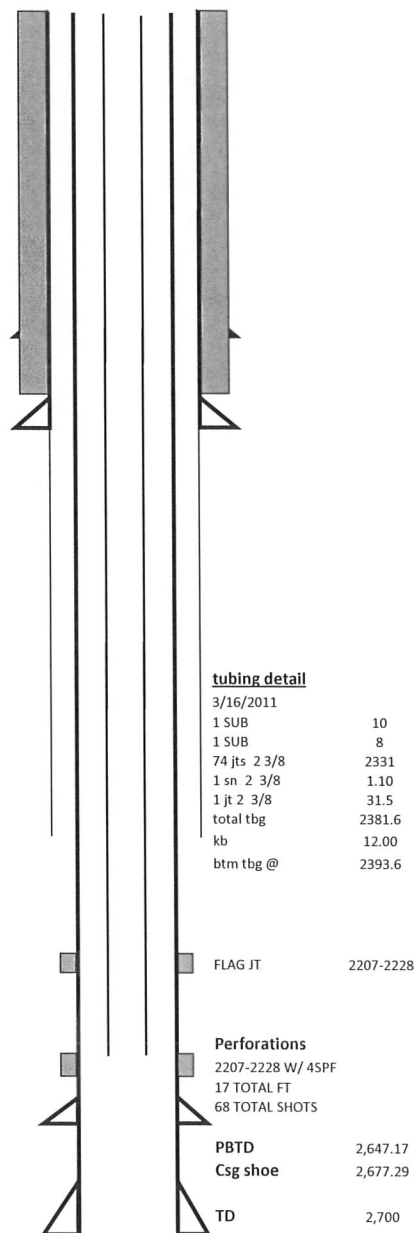
TOC 1,598

Cement Design  
 Rig up ADT Cementers and cement  
 W/ 90 SKS TYPE 1 NEAT CMT.  
 DISPLACED W/ 41 BBLs. PLUG DOWN @ 7:00 AM  
 ON 12/20/10. HELD OK.

Stimulation Treatment  
 Frac Niobrara with Maverick Stimulation using 28 # crosslinked gel  
 50,360 #16/30 Arizona sand and 50,080 # 12/20 Texas Gold sand for a  
 total of 100,440 # sand. 60.15 tons CO2. 546 BLWTR. 5 MIN- 637 PSI  
 10 MIN-619 PSI. 15 MIN -610 PSI . MAX RATE 13.7 AVG RATE 10.0  
 MAX PSI- 1345 AVG PSI 732 isip-682 psi

## Comments

Date Completion history



## tubing detail

3/16/2011  
 1 SUB 10  
 1 SUB 8  
 74 jts 2 3/8 2331  
 1 sn 2 3/8 1.10  
 1 jt 2 3/8 31.5  
 total tbg 2381.6  
 kb 12.00  
 btm tbg @ 2393.6

## Perforations

2207-2228 W/ 45PF  
 17 TOTAL FT  
 68 TOTAL SHOTS  
 PBSD 2,647.17  
 Csg shoe 2,677.29  
 TD 2,700