

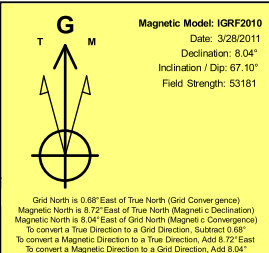
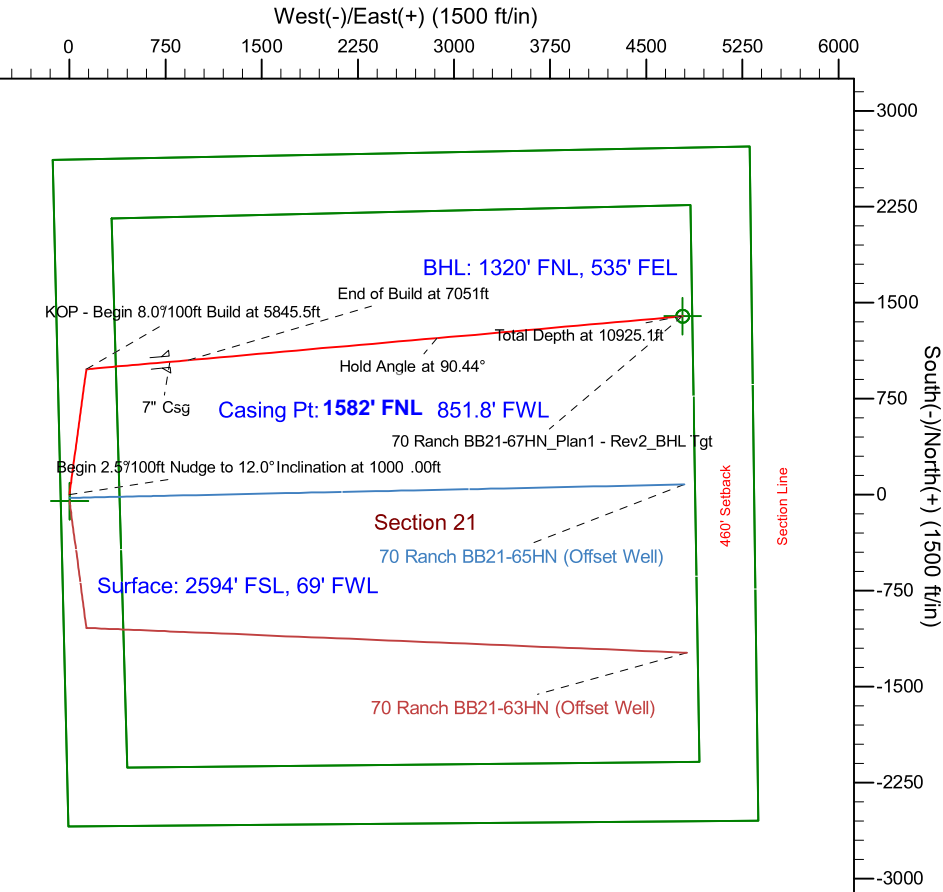
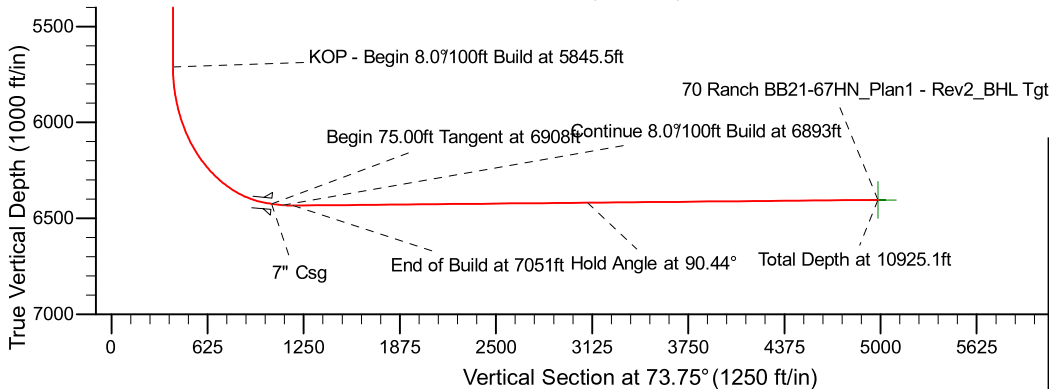
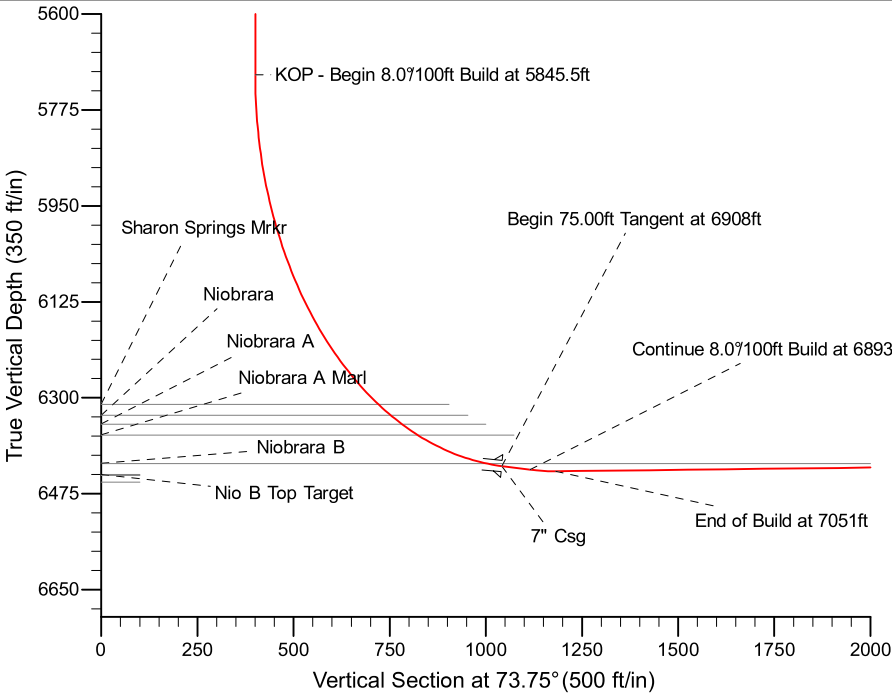
Project: Weld County, CO (NAD 83)
Site: Sec. 21, T 5N, R63W
Well: 70 Ranch BB21-67HN
Wellbore: Plan A - Rev 0 (PERMITTING PLAN ONLY)
Design: Plan A - Rev 0 Proposal

Noble Energy



SECTION DETAILS

Sec	MD	Inc	Azi	TVD	+N/-S	+E/-W	Dleg	TFace	VSec	Target
1	0.0	0.00	0.00	0.0	0.0	0.0	0.00	0.00	0.0	
2	1000.0	0.00	0.00	1000.0	0.0	0.0	0.00	0.00	0.0	
3	1660.6	16.52	7.65	1651.5	93.7	12.6	2.50	7.65	38.3	
4	4473.6	16.52	7.65	4348.5	886.3	119.0	0.00	0.00	362.2	
5	5134.3	0.00	0.00	5000.0	980.0	131.6	2.50	180.00	400.5	
6	5845.5	0.00	0.00	5711.2	980.0	131.6	0.00	0.00	400.5	
7	6908.0	85.00	84.91	6424.7	1038.0	782.8	8.00	84.91	1042.0	
8	6983.0	85.00	84.91	6431.2	1044.6	857.2	0.00	0.00	1115.3	
9	7051.0	90.44	84.91	6433.9	1050.7	924.9	8.00	0.00	1181.9	
1010925.1	90.44	84.91	6404.0	1394.2	4783.6	0.00	42.27	4982.6		70 Ranch BB21-67HN_Plan1 - Rev2_BHL Tgt



WELL DETAILS:				70 Ranch BB21-67HN (NAD83 Geodetic System)			
				Ground Level:		4613.0	
Northing		Easting		Latitude		Longitude	
422081.58		1003528.80		40° 23' 5.532 N		104° 27' 1.080 W	
Plan: Plan A - Rev 0 Proposal (70 Ranch BB21-67HN/Plan A - Rev 0 (PERMITTING PLAN ONLY))							
Created By: Jose Patino				Date: 18:31, March 28 2011			