

DALEY LAND SURVEYING, INC.

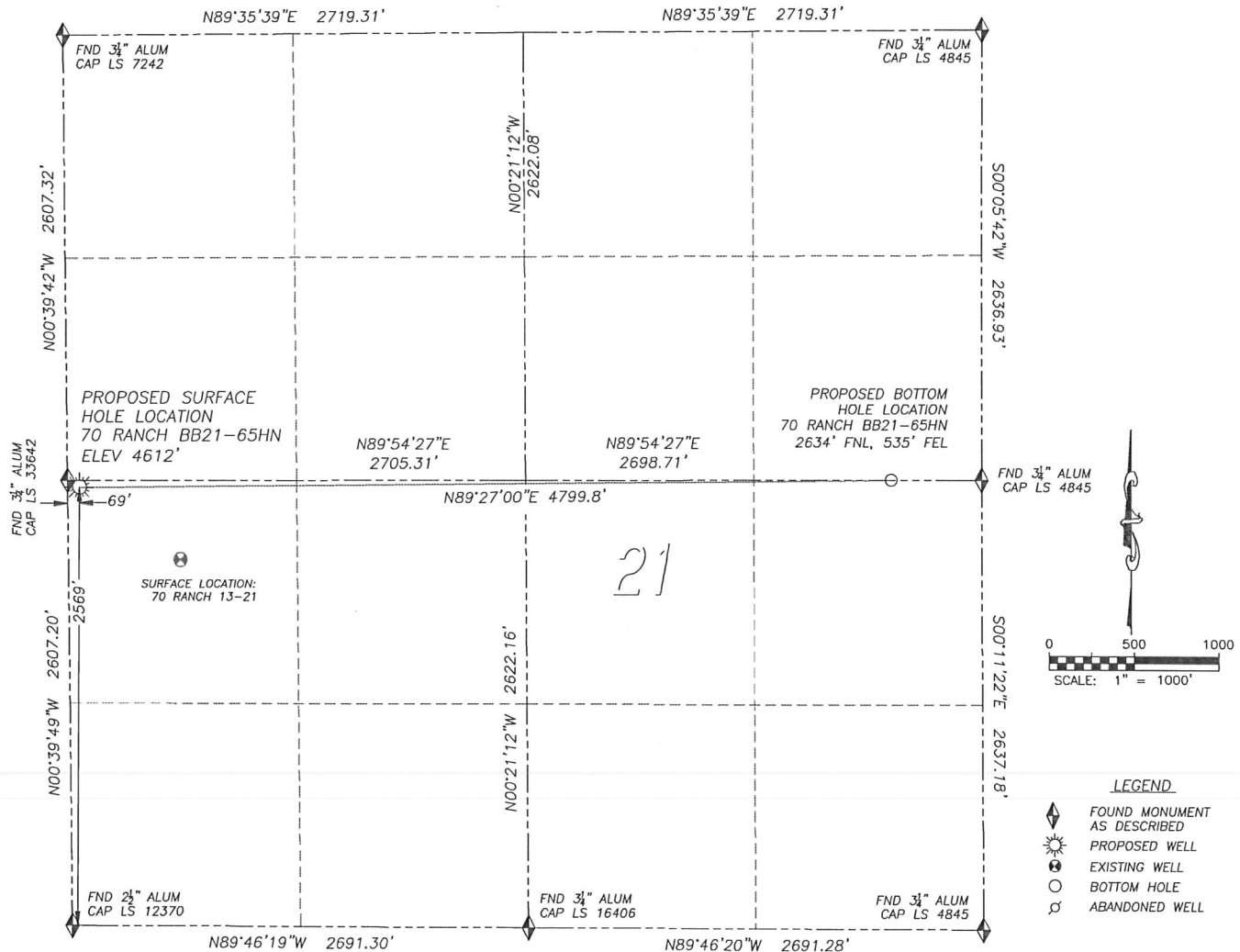
PARKER, CO. 80134

303 953 9841

WELL LOCATION CERTIFICATE

70 RANCH BB21-65HN

SECTION 21, TOWNSHIP 5 NORTH, RANGE 63 WEST OF THE 6TH PRINCIPAL MERIDIAN



LEGEND

- ◆ FOUND MONUMENT AS DESCRIBED
- ☀ PROPOSED WELL
- ⊙ EXISTING WELL
- BOTTOM HOLE
- ⊘ ABANDONED WELL

NAD 83 LATITUDE AND LONGITUDE

70 RANCH BB21-65HN SURFACE HOLE:

LATITUDE: N40.38480°
 LONGITUDE: W104.45030°
 ELEVATION: 4612'
 FOOTAGE: 2569' FSL, 69' FWL
 PDOP: 1.8
 QTR/QTR: NW4/SW4
 PROP LINE: 69' WEST

BOTTOM HOLE:

LATITUDE: N40.38493°
 LONGITUDE: W104.43308°
 FOOTAGE: 2634' FNL, 535' FEL

NEAREST EXISTING WELL:

70 RANCH 13-21 SURFACE HOLE
 LATITUDE: N40.38364°
 LONGITUDE: W104.44815°
 ELEVATION: 4592'
 733' SOUTHEAST

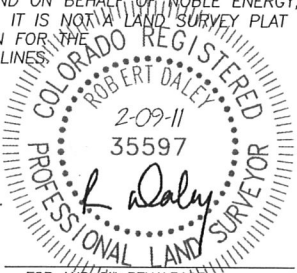
IN ACCORDANCE WITH A REQUEST FROM SEAN CASPER OF NOBLE ENERGY INC., DALEY LAND SURVEYING, INC. HAS DETERMINED THE SURFACE LOCATION OF THE 70 RANCH BB21-65HN WELL TO BE 2569' FSL, 69' FWL, AS MEASURED AT NINETY (90) DEGREES FROM THE SECTION LINES OF SECTION 21, TOWNSHIP 5 NORTH, RANGE 63 WEST OF THE 6TH PRINCIPAL MERIDIAN, WELD COUNTY, COLORADO. THE BOTTOM HOLE LOCATION, PROVIDED BY THE CLIENT, IS TO BE 2634' FNL, 535' FEL.

I HEREBY CERTIFY THAT THIS WELL LOCATION CERTIFICATE WAS PREPARED BY ME OR UNDER MY DIRECT SUPERVISION, THAT THE WORK WAS COMPLETED ON 2/07/2011 FOR AND ON BEHALF OF NOBLE ENERGY, INC., AND THAT THIS MAP DOES NOT REPRESENT A BOUNDARY SURVEY, IT IS NOT A LAND SURVEY PLAT OR AN IMPROVEMENT SURVEY PLAT AND IT IS NOT TO BE RELIED UPON FOR THE ESTABLISHMENT OF FENCE, BUILDING OR OTHER FUTURE IMPROVEMENT LINES.

NOTES:

- 1) BEARINGS FOR THIS MAP ARE ASSUMED AND BASED UPON GPS OBSERVATIONS MADE BETWEEN MONUMENTS LOCATED AT THE SOUTHWEST CORNER AND WEST QUARTER CORNER OF SECTION 21, T.5N., R.63W.
- 2) HORIZONTAL DATUM IS NAD83.
- 3) VERTICAL DATUM IS NAVD88. ELEVATIONS ARE DERIVED FROM GPS OBSERVATIONS PROCESSED THROUGH OPUS, UTILIZING THE GEOID03 MODEL.
- 4) SEE LOCATION DRAWING FOR VISIBLE IMPROVEMENTS WITHIN 600' OF PROPOSED SURFACE HOLE LOCATION.
- 5) SURFACE USE: PASTURE.

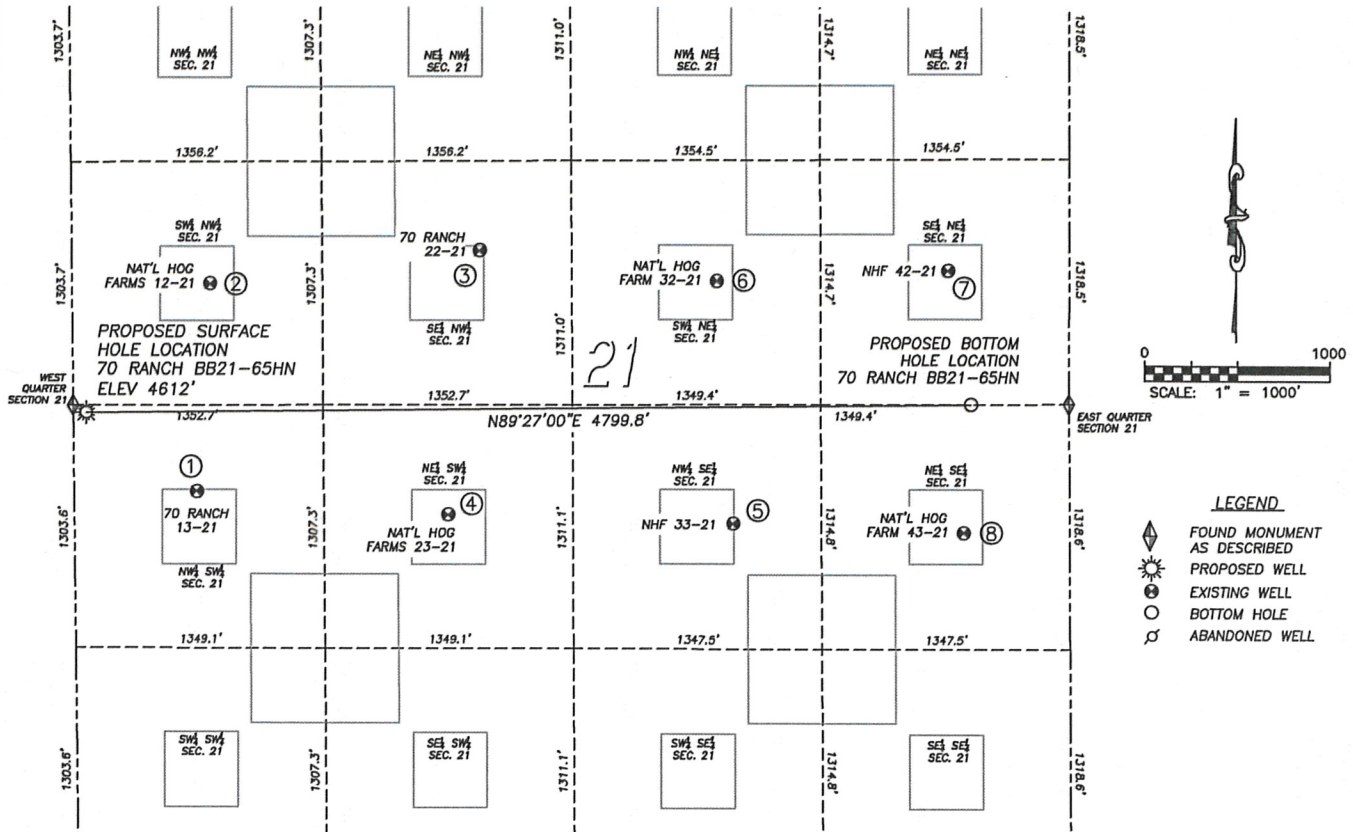
NOTICE: According to Colorado law you MUST commence any legal action based upon any defect in this W.L.C. within three years after you first discover such defect. In no event may any action based upon any such defect in this W.L.C. be commenced more than ten years from the date of the certification shown hereon.



FOR AND ON BEHALF OF
DALEY LAND SURVEYING, INC.,
Robert Daley, PLS 35597

SITE SKETCH 70 RANCH BB21-65HN

SECTION 21, TOWNSHIP 5 NORTH, RANGE 63 WEST OF THE 6TH PRINCIPAL MERIDIAN



LEGEND

- FOUND MONUMENT AS DESCRIBED
- PROPOSED WELL
- EXISTING WELL
- BOTTOM HOLE
- ABANDONED WELL

①

70 RANCH 13-21
NW/SW SEC. 21
2147' FSL, 662' FWL
LAT. N40.38364°
LONG. W104.44815°
EL: 4592'
PDOP 1.6

②

NAT'L HOG FARMS 12-21
SW/NW SEC. 21
1961' FNL, 747' FWL
LAT. N40.38669°
LONG. W104.44790°
EL: 4610'
PDOP 1.3

③

70 RANCH 22-21
SE/NW SEC. 21
1791' FNL, 2210' FWL
LAT. N40.38719°
LONG. W104.44265°
EL: 4606'
PDOP 1.5

④

NAT'L HOG FARMS 23-21
NE/SW SEC. 21
2027' FSL, 2024' FWL
LAT. N40.38329°
LONG. W104.44326°
EL: 4579'
PDOP 2.3

⑤

NHF 33-21
NW/SE SEC. 21
1987' FSL, 1826' FEL
LAT. N40.38317°
LONG. W104.43770°
EL: 4594'
PDOP 2.2

⑥

NAT'L HOG FARM 32-21
SW/NE SEC. 21
1962' FNL, 1915' FEL
LAT. N40.38675°
LONG. W104.43802°
EL: 4612'
PDOP 1.8

⑦

NHF 42-21
SE/NE SEC. 21
1914' FNL, 659' FEL
LAT. N40.38690°
LONG. W104.43352°
EL: 4626'
PDOP 1.3

⑧

NAT'L HOG FARM 43-21
NE/SE SEC. 21
1945' FSL, 576' FEL
LAT. N40.38304°
LONG. W104.43321°
EL: 4616'
PDOP 1.4

NOTES:

- 1) THIS DOES NOT REPRESENT A BOUNDARY SURVEY
- 2) THE LATITUDES AND LONGITUDES SHOWN ARE REFERENCED TO NAD83
- 3) DATUM FOR ELEVATION IS NAVD88. ELEVATIONS ARE DERIVED FROM GPS-RTK OBSERVATIONS PROCESSED THROUGH OPUS, UTILIZING THE GEOID03 MODEL.

