

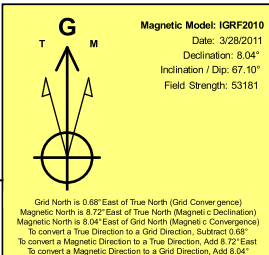
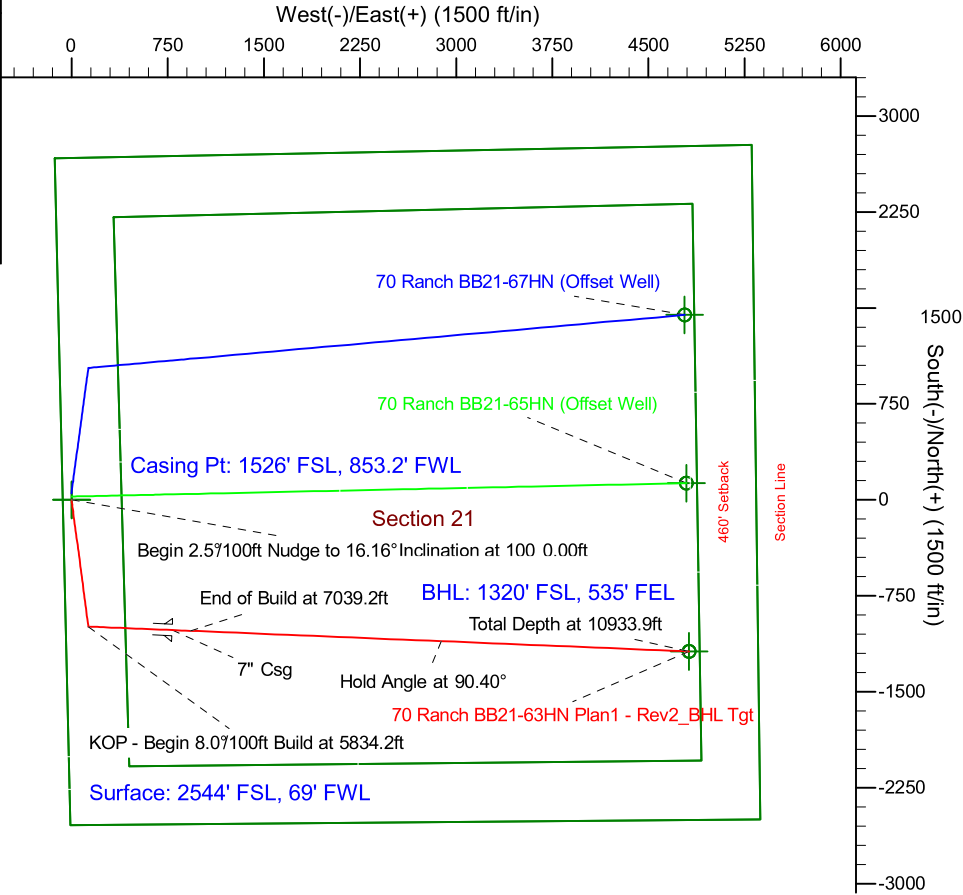
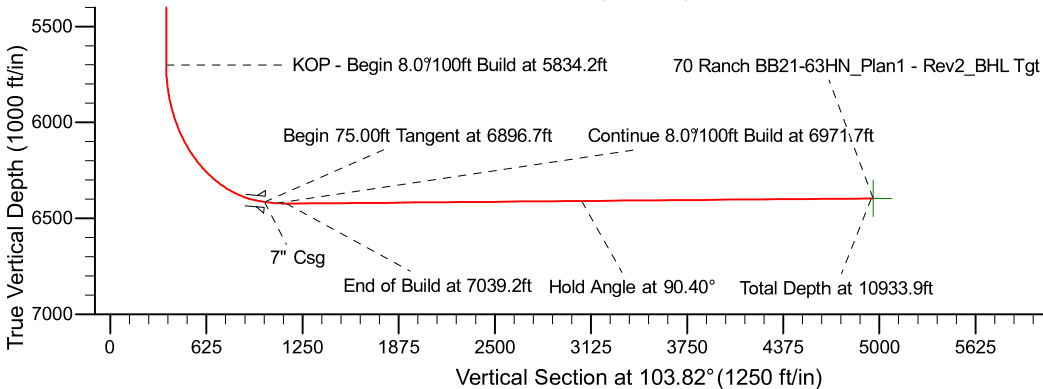
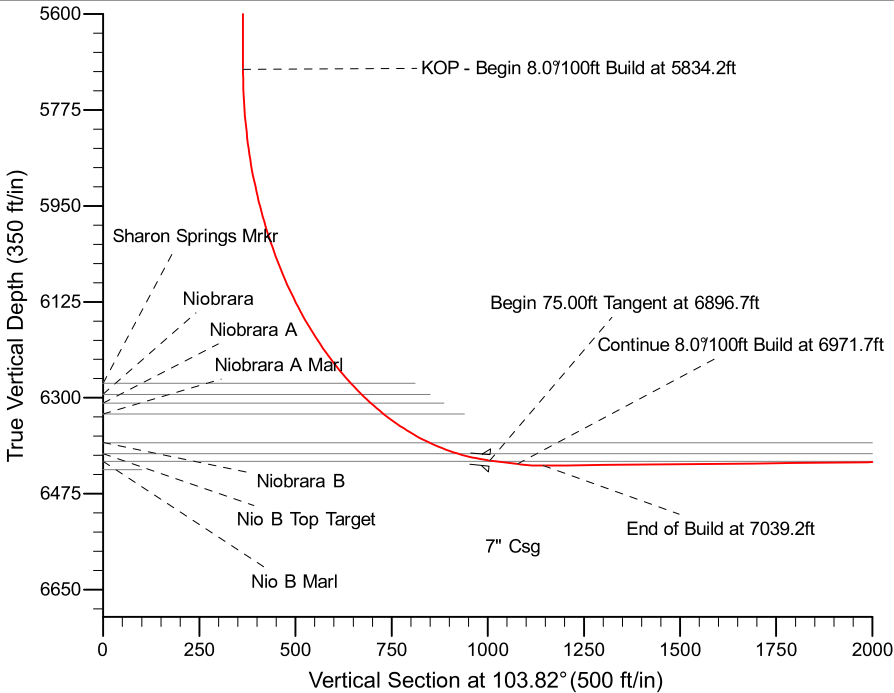
Project: Weld County, CO (NAD 83)
Site: Sec. 21, T 5N, R63W
Well: 70 Ranch BB21-63HN
Wellbore: Plan A - Rev 0 (PERMITTING PLAN ONLY)
Design: Plan A - Rev 0 Proposal

Noble Energy



SECTION DETAILS

Sec	MD	Inc	Azi	TVD	+N/-S	+E/-W	Dleg	TFace	VSec	Target
1	0.0	0.00	0.00	0.0	0.0	0.0	0.00	0.00	0.0	
2	1000.0	0.00	0.00	1000.0	0.0	0.0	0.00	0.00	0.0	
3	1646.3	16.16	172.47	1637.7	-89.7	11.9	2.50	172.47	33.0	
4	4588.0	16.16	172.47	4463.3	-901.3	119.1	0.00	0.00	330.9	
5	5234.2	0.00	0.00	5101.0	-991.0	131.0	2.50	180.00	363.9	
6	5834.2	0.00	0.00	5701.0	-991.0	131.0	0.00	0.00	363.9	
7	6896.7	85.00	92.37	6414.5	-1018.0	784.2	8.00	92.37	1004.7	
8	6971.7	85.00	92.37	6421.0	-1021.1	858.9	0.00	0.00	1077.9	
9	7039.2	90.40	92.37	6423.7	-1023.9	926.2	8.00	0.00	1144.0	
10	10933.9	90.40	92.37	6396.4	-1184.9	4817.4	0.00	-26.01	4961.0	70 Ranch BB21-63HN_Plan1 - Rev2_BHL Tgt



WELL DETAILS: 70 Ranch BB21-63HN (NAD83 Geodetic System)			
Ground Level:	4612.0	Latitude	40° 23' 5.028 N
Northing	422066.04	Easting	1003528.98
Longitude	104° 27' 1.080 W		
Plan: Plan A - Rev 0 Proposal (70 Ranch BB21-63HN/Plan A - Rev 0 (PERMITTING PLAN ONLY))			
Created By: Jose Patino		Date: 8:04, March 29 2011	