
XTO ENERGY INC EBUSINESS

Ute Government 101

La Plata County , Colorado

Cement Production Casing

17-Apr-2011

Job Site Documents

The Road to Excellence Starts with Safety

Sold To #: 353810	Ship To #: 2848550	Quote #:	Sales Order #: 8111706
Customer: XTO ENERGY INC EBUSINESS	Customer Rep: NIETZEL, MARK		
Well Name: Ute Government	Well #: 101	API/UWI #:	
Field:	City (SAP): IGNACIO	County/Parish: La Plata	State: Colorado
Contractor: AZTEC WELL SERVICE	Rig/Platform Name/Num: AWS 507		
Job Purpose: Cement Production Casing			
Well Type: Development Well	Job Type: Cement Production Casing		
Sales Person: SNYDER, RANDALL	Srv Supervisor: PHILLIPS, MARK	MBU ID Emp #:	445272

Job Personnel

HES Emp Name	Exp Hrs	Emp #	HES Emp Name	Exp Hrs	Emp #	HES Emp Name	Exp Hrs	Emp #
GONZALES, MATTHEW Lee	3	479805	JENSEN, JESSE Robert	3	478774	PHILLIPS, MARK Bejar	3	445272
TYLER, LUTHER	3	375283						

Equipment

HES Unit #	Distance-1 way	HES Unit #	Distance-1 way	HES Unit #	Distance-1 way	HES Unit #	Distance-1 way

Job Hours

Date	On Location Hours	Operating Hours	Date	On Location Hours	Operating Hours	Date	On Location Hours	Operating Hours
04-17-2011	3	1						
TOTAL			Total is the sum of each column separately					

Job

Formation Name	Formation Depth (MD)	Top	Bottom	Form Type	Job depth MD	Job Depth TVD	Water Depth	Perforation Depth (MD)	From	To
				BHST	3315. ft	3315. ft				
							Wk Ht Above Floor			
							3. ft			

Job Times

Date	Time	Time Zone
17 - Apr - 2011	16:00	MST
17 - Apr - 2011	20:00	MST
17 - Apr - 2011	20:44	MST
17 - Apr - 2011	21:50	MST
17 - Apr - 2011	23:00	MST

Well Data

Description	New / Used	Max pressure psig	Size in	ID in	Weight lbm/ft	Thread	Grade	Top MD ft	Bottom MD ft	Top TVD ft	Bottom TVD ft
7 7/8" Open Hole				7.875				425.	3315.	225.	2925.
5 1/2" Production Casing	Unknown		5.5	4.95	15.5		J-55	.	3315.	.	2925.
8 5/8" Surface Casing	Unknown		8.625	8.097	24.		J-55	.	425.		

Sales/Rental/3rd Party (HES)

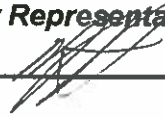
Description	Qty	Qty uom	Depth	Supplier
PLUG,CMTG,TOP,5 1/2,HWE,4.38 MIN/5.09 MA	1	EA		
SUGAR, GRANULATED, IMPERIAL	75	LB		

Tools and Accessories

Type	Size	Qty	Make	Depth	Type	Size	Qty	Make	Depth	Type	Size	Qty	Make
Guide Shoe					Packer					Top Plug	5.5	1	HES
Float Shoe					Bridge Plug					Bottom Plug			
Float Collar					Retainer					SSR plug set			
Insert Float										Plug Container	5.5	1	HES
Stage Tool										Centralizers			

Miscellaneous Materials

Gelling Agt	Conc	Surfactant	Conc	Acid Type	Qty	Conc	%
Treatment Fld	Conc	Inhibitor	Conc	Sand Type	Size		Qty

Fluid Data									
Stage/Plug #: 1									
Fluid #	Stage Type	Fluid Name	Qty	Qty uom	Mixing Density lbm/gal	Yield ft ³ /sk	Mix Fluid Gal/sk	Rate bbl/min	Total Mix Fluid Gal/sk
1	MUD FLUSH	MUD FLUSH - ZI - SBM (13383)	20.00	bbl	8.4	.0	.0	4.0	
2	PRB II Lead	PRB-2 - SBM (321500)	225.0	sacks	12.3	2.36	12.95	5.0	12.95
3	PRB II Tail	PRB-2 - SBM (321500)	150.0	sacks	13.5	1.81	8.85	5.0	8.85
4	H2O Displacement		75.8	bbl	8.33	.0	.0	6.0	
Calculated Values		Pressures		Volumes					
Displacement	75.8	Shut In: Instant		Lost Returns	0	Cement Slurry	140.6	Pad	
Top Of Cement	SURFACE	5 Min		Cement Returns	19	Actual Displacement	75.8	Treatment	
Frac Gradient		15 Min		Spacers	10	Load and Breakdown		Total Job	226
Rates									
Circulating	6	Mixing	5	Displacement	6	Avg. Job	5		
Cement Left In Pipe	Amount	45.11 ft	Reason	Shoe Joint					
Frac Ring # 1 @	ID	Frac ring # 2 @	ID	Frac Ring # 3 @	ID	Frac Ring # 4 @	ID		
The Information Stated Herein Is Correct				Customer Representative Signature					
				 XTO 650555					

The Road to Excellence Starts with Safety

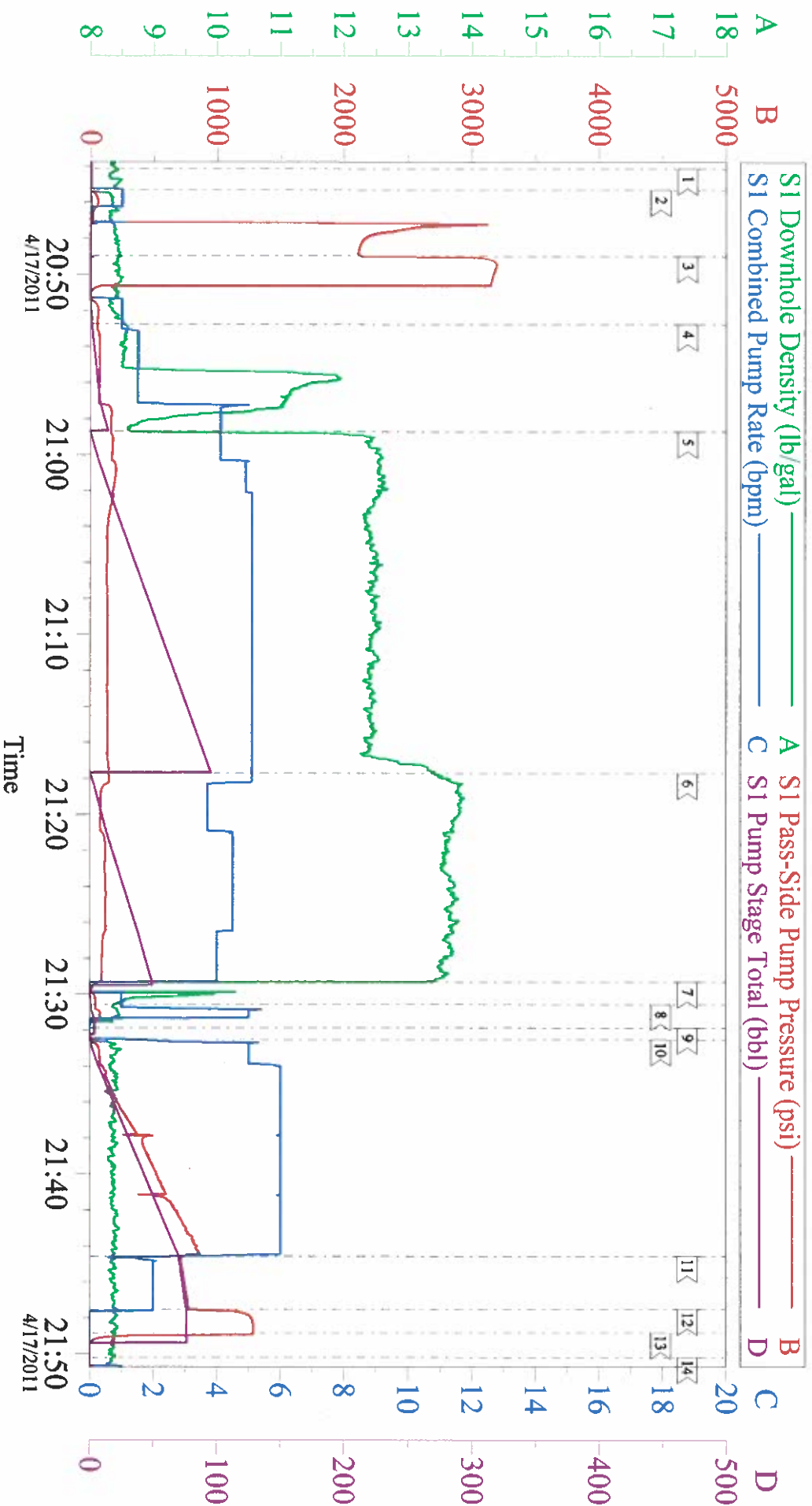
Sold To #: 353810	Ship To #: 2848550	Quote #:	Sales Order #: 8111706
Customer: XTO ENERGY INC EBUSINESS		Customer Rep: NIETZEL, MARK	
Well Name: Ute Government	Well #: 101	API/UWI #:	
Field:	City (SAP): IGNACIO	County/Parish: La Plata	State: Colorado
Legal Description:			
Lat: N 0 deg. OR N 0 deg. 0 min. 0 secs.		Long: E 0 deg. OR E 0 deg. 0 min. 0 secs.	
Contractor: AZTEC WELL SERVICE	Rig/Platform Name/Num: AWS 507		
Job Purpose: Cement Production Casing	Ticket Amount:		
Well Type: Development Well	Job Type: Cement Production Casing		
Sales Person: SNYDER, RANDALL	Srvc Supervisor: PHILLIPS, MARK	MBU ID Emp #: 445272	

Activity Description	Date/Time	Cht #	Rate bbl/ min	Volume bbl		Pressure psig		Comments
				Stage	Total	Tubing	Casing	
Call Out	04/17/2011 16:00							
Pre-Convoy Safety Meeting	04/17/2011 18:00							ALL HES EMPLOYEES
Arrive At Loc	04/17/2011 20:00							RIG ON BOTTOM CIRCULATING
Assessment Of Location Safety Meeting	04/17/2011 20:10							ALL HES EMPLOYEES
Rig-Up Equipment	04/17/2011 20:15							1 RED TIGER PUMP TRUCK, 1 660 BULK TRUCK, 1 BODY LOAD, 1 5.5 QUICK LATCH PLUG CONTAINER, 1 F 450 P/U.
Pre-Job Safety Meeting	04/17/2011 20:30							ALL HES EMPLOYEES, RIG CREW, CO REP.
Start Job	04/17/2011 20:44							SP 417', TD 3315', TP 3310', FC 3264.9', HOLE 7.875", SJ 45.11', MUD WT 9.6 PPG, 400 BBLs OF H2O ON LOCATION, WATER SAMPLE SUBMITTED.
Pump Water	04/17/2011 20:45		1	1			60.0	FILL LINES
Pressure Test	04/17/2011 20:48		0.5				3100. 0	NO LEAKS
Pump Spacer 1	04/17/2011 20:52		4	10			170.0	MUD FLUSH, VOLUME CUT BACK FROM 20 BBLs TO 10 BBLs PER CO REP DUE TO TANK VOLUME.

Activity Description	Date/Time	Cht #	Rate bbl/min	Volume bbl		Pressure psig		Comments
				Stage	Total	Tubing	Casing	
Pump Lead Cement	04/17/2011 20:58		5	92			150.0	225 SKS PBR CMT TO BE MIXED AT 12.3 PPG, 2.36 YIELD, 12.95 GAL/SK, CMT TO BE WEIGHED VIA PRESSURE BALANCED MUD SCALES. WET AND DRY SAMPLES SUBMITTED.
Pump Tail Cement	04/17/2011 21:17		5	48			120.0	150 SKS PBR CMT TO BE MIXED AT 13.5 PPG, 1.81 YIELD, 8.85 GAL/SK, CMT TO BE WEIGHED VIA PRESSURE BALANCED MUD SCALES. WET AND DRY SAMPLES SUBMITTED.
Shutdown	04/17/2011 21:29							FOR NO MORE THEN 5 MINUTES,
Clean Lines	04/17/2011 21:30							NO MORE THEN 5 MINUTES.
Drop Plug	04/17/2011 21:31							PLUG LAUNCH
Pump Displacement	04/17/2011 21:32		6	75.8			750.0	FRESH WATER
Cement Returns to Surface	04/17/2011 21:41		6	57			600.0	19 BBLS OF CEMENT RETURNED TO SURFACE
Slow Rate	04/17/2011 21:44		2	70			800.0	5 BBLS PRIOR TO CALCULATED DISPLACEMENT
Bump Plug	04/17/2011 21:47		2	75.8			1250.0	PLUG LANDED HOLD FOR TWO MINUTES
Check Floats	04/17/2011 21:48							FLOATS HOLDING, NO ANNULAR FLOW AT SHAKERS NOTED
End Job	04/17/2011 21:50							THANK YOU FOR USING HES FROM MARK PHILLIPS AND CREW.
Post-Job Safety Meeting (Pre Rig-Down)	04/17/2011 21:55							ALL HES EMPLOYEES
Rig-Down Equipment	04/17/2011 22:00							SAFELY

Activity Description	Date/Time	Cht #	Rate bbl/ min	Volume bbl		Pressure psig		Comments
				Stage	Total	Tubing	Casing	
Pre-Convoy Safety Meeting	04/17/2011 23:00							ALL HES EMPLOYEES
Crew Leave Location	04/17/2011 23:20							SITE WAS AS CLEAN AS WHEN WE ARRIVED

XTO UTE GOVERNMENT #101 PRODUCTION



Customer: XTO
Well Description: UTE GOVERNMENT #101
Company Rep: MARK NEITZEL

Job Date: 17-Apr-2011
Job Type: PRODUCTION
Cement Supervisor: MARK PHILLIPS

Sales Order #: 8111706
ADC Used: YES
Elite #: RED TIGER JESSE JENSEN