
XTO ENERGY INC EBUSINESS

Ute Government 101

La Plata County , Colorado

Cement Surface Casing

14-Apr-2011

Job Site Documents

The Road to Excellence Starts with Safety

Sold To #: 353810		Ship To #: 2848550		Quote #:		Sales Order #: 8101563	
Customer: XTO ENERGY INC EBUSINESS				Customer Rep: Niederhofer, Justin			
Well Name: Ute Government			Well #: 101		API/UWI #:		
Field:		City (SAP): IGNACIO		County/Parish: La Plata		State: Colorado	
Contractor: AZTEC WELL SERVICE		Rig/Platform Name/Num: AWS 507					
Job Purpose: Cement Surface Casing							
Well Type: Development Well				Job Type: Cement Surface Casing			
Sales Person: KIDDOO, JUSTIN				Srv Supervisor: WOOD, BRANDON		MBU ID Emp #: 412753	
Job Personnel							
HES Emp Name	Exp Hrs	Emp #	HES Emp Name	Exp Hrs	Emp #	HES Emp Name	Exp Hrs
DOBBS, CHAD A	4.5	275043	MILLER, DAVID A	4.5	484499	WOOD, BRANDON M	4.5
Equipment							
HES Unit #	Distance-1 way	HES Unit #	Distance-1 way	HES Unit #	Distance-1 way	HES Unit #	Distance-1 way
10025024	60 mile	10741115	60 mile	10948693	60 mile	11223557	60 mile
Job Hours							
Date	On Location Hours	Operating Hours	Date	On Location Hours	Operating Hours	Date	On Location Hours
TOTAL		<i>Total is the sum of each column separately</i>					
Job				Job Times			
Formation Name				Date			
Formation Depth (MD)				Time			
Top				Time Zone			
Bottom				Called Out			
Form Type				On Location			
Job depth MD				Job Started			
Water Depth				Job Completed			
Perforation Depth (MD)				Departed Loc			
From				To			
Well Data							
Description	New / Used	Max pressure psig	Size in	ID in	Weight lbm/ft	Thread	Grade
12 1/4" Open Hole				12.25			
8 5/8" Surface Casing	Unknown		8.625	8.097	24.		J-55
Sales/Rental/3rd Party (HES)							
Description						Qty	Qty uom
PLUG,CMTG,TOP,8 5/8,HWE,7.20 MIN/8.09 MA						1	EA
SUGAR, GRANULATED, IMPERIAL						150	LB
Tools and Accessories							
Type	Size	Qty	Make	Depth	Type	Size	Qty
Guide Shoe					Packer		
Float Shoe					Bridge Plug		
Float Collar					Retainer		
Insert Float							
Stage Tool							
Miscellaneous Materials							
Gelling Agt		Conc		Surfactant		Conc	
Treatment Fld		Conc		Inhibitor		Conc	
Acid Type			Qty	Sand Type			Conc %
			Size				Qty

Fluid Data									
Stage/Plug #: 1									
Fluid #	Stage Type	Fluid Name	Qty	Qty uom	Mixing Density lbm/gal	Yield ft ³ /sk	Mix Fluid Gal/sk	Rate bbl/min	Total Mix Fluid Gal/sk
1	Water Spacer		20.00	bbl	8.33	.0	.0	.0	
2	Surface Cement	CMT - PREMIUM - CLASS G, 94 LB SK (100003685)	320.0	sacks	15.8	1.17	5.01		5.01
	94 lbm	CMT - PREMIUM - CLASS G REG OR TYPE V, BULK (100003685)							
	3 %	CALCIUM CHLORIDE - HI TEST PELLET (100005053)							
	0.125 lbm	POLY-E-FLAKE (101216940)							
	5.013 Gal	FRESH WATER							
3	H2O Displacement		24.10	bbl	.	.0	.0	.0	
Calculated Values		Pressures		Volumes					
Displacement	24.1	Shut In: Instant	113	Lost Returns	NO	Cement Slurry	66.7	Pad	
Top Of Cement	SURF	5 Min		Cement Returns	32	Actual Displacement	24.2	Treatment	
Frac Gradient		15 Min		Spacers	10	Load and Breakdown		Total Job	
Rates									
Circulating	2	Mixing	4	Displacement	3	Avg. Job	3		
Cement Left In Pipe	Amount	46.98 ft	Reason	Shoe Joint					
Frac Ring # 1 @	ID	Frac ring # 2 @	ID	Frac Ring # 3 @	ID	Frac Ring # 4 @	ID		
The Information Stated Herein Is Correct				Customer Representative Signature					

The Road to Excellence Starts with Safety

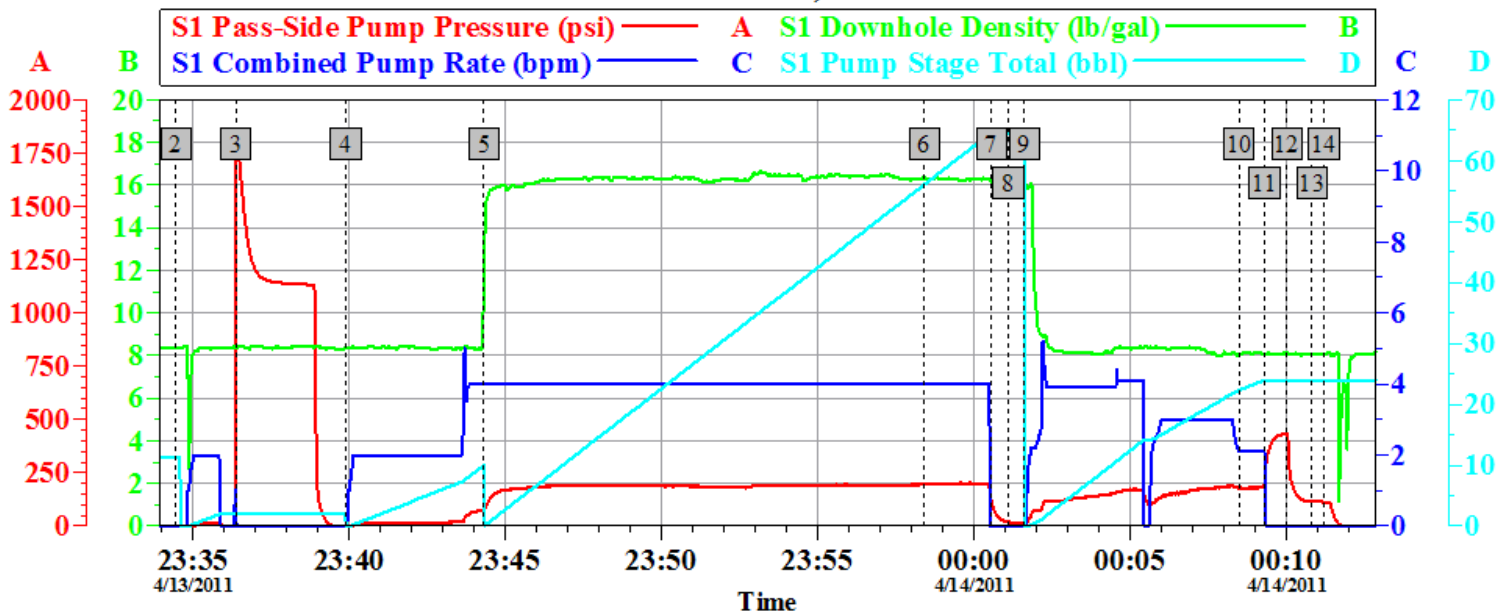
Sold To #: 353810	Ship To #: 2848550	Quote #:	Sales Order #: 8101563
Customer: XTO ENERGY INC EBUSINESS		Customer Rep: Niederhofer, Justin	
Well Name: Ute Government	Well #: 101	API/UWI #:	
Field:	City (SAP): IGNACIO	County/Parish: La Plata	State: Colorado
Legal Description:			
Lat: N 0 deg. OR N 0 deg. 0 min. 0 secs.		Long: E 0 deg. OR E 0 deg. 0 min. 0 secs.	
Contractor: AZTEC WELL SERVICE	Rig/Platform Name/Num: AWS 507		
Job Purpose: Cement Surface Casing			Ticket Amount:
Well Type: Development Well		Job Type: Cement Surface Casing	
Sales Person: KIDDOO, JUSTIN	Srv Supervisor: WOOD, BRANDON	MBU ID Emp #: 412753	

Activity Description	Date/Time	Cht #	Rate bbl/min	Volume bbl		Pressure psig		Comments
				Stage	Total	Tubing	Casing	
Call Out	04/13/2011 17:00							
Depart Yard Safety Meeting	04/13/2011 18:45							SAFETY MEETING INVOLVING THE CMT CREW
Crew Leave Yard	04/13/2011 18:50							
Arrive At Loc	04/13/2011 20:30							1- F-450 10829466, 1- RED TIGER PUMP TRUCK 11223557, 1- 660 BULK TRUCK TRAILERS 10025024
Assessment Of Location Safety Meeting	04/13/2011 20:35							ASSESSMENT OF LOCATION INVOLVING THE CMT CREW
Pre-Rig Up Safety Meeting	04/13/2011 21:25							SAFETY MEETING INVOLVING THE ENTIRE CMT/ RIG CREW
Rig-Up Equipment	04/13/2011 21:30							
Pre-Job Safety Meeting	04/13/2011 22:55							SAFETY MEETING INVOLVING EVERYONE ON LOCATION
Start Job	04/13/2011 23:34							TP 425.3 FT, FC 378.32 FT, SJ 46.98 FT, 8 5/8 24 # J-55 CSG, 12 1/4 OH, CALCULATED 132 PSI TO LIFT PIPE OUT OF HOLE
Test Lines	04/13/2011 23:36		0.5		0.1		1000.0	PRESSURE TEST GOOD TO 1000 PSI
Pump Spacer 1	04/13/2011 23:40		2		10		18.0	PUMP 10 BBL FRESH WATER SPACER

Activity Description	Date/Time	Cht #	Rate bbl/min	Volume bbl		Pressure psig		Comments
				Stage	Total	Tubing	Casing	
Pump Cement	04/13/2011 23:44		4		66.7		190.0	320 SKS, 1.17 YLD, 5.01 GAL H2O/SK, 66.7 BBLS @ 15.8 #, 38.2 BBLS H2O REQ
Cement Returns to Surface	04/13/2011 23:58				32			CALCULATED SHOULD CIRCULATE 32.4 BBLS CEMENT RETURNS TO SURFACE, ACTUALLY CIRCULATED 32 BBLS
Shutdown	04/14/2011 00:00							SHUT DOWN TO DROP TOP PLUG
Drop Top Plug	04/14/2011 00:01							TATTLE TAIL INDICATED PLUG LEFT THE PLUG CONTAINER
Pump Displacement	04/14/2011 00:02		4		24.1		117.0	CALCULATED 24.1 BBLS DISPLACEMENT, ACTUALLY PUMPED 24.4 BBLS ON TANKS MARK TO MARK TO BUMP PLUG
Slow Rate	04/14/2011 00:08		2				176.0	SLOW RATE 2 BBL MIN THE LAST 3 BBLS OF DISPLACEMENT TO LAND THE PLUG
Bump Plug	04/14/2011 00:09		2				185.0	CALCULATED 146.8 PSI DIFFERENTIAL WHEN PLUG LANDS, PLUG BUMPED @ 185 PSI
Release Casing Pressure	04/14/2011 00:10						433.0	PRESSURED UP TO 433 PSI, UNKNOWN IF FLOAT HELD COMPLETELY, SHUT IN HEAD
Shut In Well	04/14/2011 00:10						113.0	SHUT IN HEAD W/ 113 PSI ON IT
End Job	04/14/2011 00:11							GOOD CIRCULATION THROUGHOUT THE ENTIRE CMT JOB, NO PIPE MOVEMENT,
Pre-Rig Down Safety Meeting	04/14/2011 00:15							SAFETY MEETING INVOLVING THE CMT/RIG CREW
Rig-Down Equipment	04/14/2011 00:20							

Activity Description	Date/Time	Cht #	Rate bbl/min	Volume bbl		Pressure psig		Comments
				Stage	Total	Tubing	Casing	
Safety Meeting - Departing Location	04/14/2011 00:55							SAFETY MEETING INVOLVING THE CMT CREW
Depart Location for Service Center or Other Site	04/14/2011 01:00							THANK YOU FOR USING HALLIBURTON, BRANDON WOOD AND CREW

XTO UTE GOVT # 101, SURFACE



Global Event Log

2 Start Job	4/13/2011 23:34:27	3 Test Lines	4/13/2011 23:36:22
4 Pump Spacer 1	4/13/2011 23:39:54	5 Pump Cement	4/13/2011 23:44:19
6 Cement Returns to Surface	4/13/2011 23:58:24	7 Shutdown	4/14/2011 00:00:34
8 Drop Plug	4/14/2011 00:01:05	9 Pump Displacement	4/14/2011 00:01:37
10 Slow Rate	4/14/2011 00:08:29	11 Bump Plug	4/14/2011 00:09:18
12 Release Casing Pressure	4/14/2011 00:10:01	13 Shut In Well	4/14/2011 00:10:49
14 End Job	4/14/2011 00:11:12		

Customer:	Job Date:	Sales Order #:
Well Description:	Job type:	ADC Used:
Customer Rep:	Service Supervisor:	Operator/ Pump:

OptiCem v6.3.4
14-Apr-11 00:28