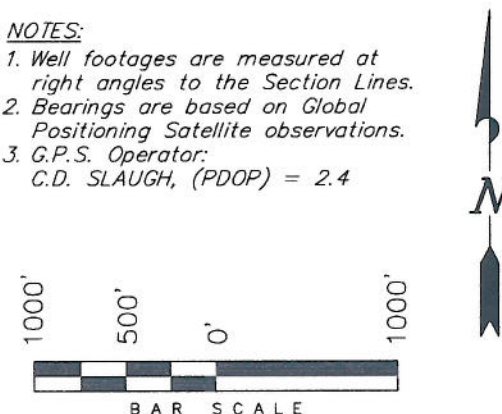


ENCANA OIL & GAS (USA) INC

WELL LOCATION, ENCANA FEE 19-10B
(K19CNE), LOCATED AS SHOWN IN LOT
3 OF SECTION 19, T6S, R92W, 6th P.M.
GARFIELD COUNTY, COLORADO.

1. Well footages are measured at right angles to the Section Lines.
2. Bearings are based on Global Positioning Satellite observations.
3. G.P.S. Operator:
C.D. SLAUGH, (PDOP) = 2.4



THIS IS TO CERTIFY THAT THE ABOVE PLAT WAS
PREPARED FROM FIELD NOTES OF SURVEYS
MADE BY ME OR UNDER MY CLOSE PERSONAL SUPERVISION
AND HAS BEEN STAKED ON THE GROUND IN ACCORDANCE WITH THE
PLAT, AND THAT THE SAME IS TRUE TO THE BEST OF MY KNOWLEDGE.

A circular professional seal for Stacy W. Stewart, a Colorado Registered Professional Land Surveyor. The seal contains the text "COLORADO REGISTERED", "STACY W. STEWART", "# 30125", "02/24/11", and "PROFESSIONAL LAND SURVEYOR". A signature is written across the seal, and the number "08" is visible at the bottom right.

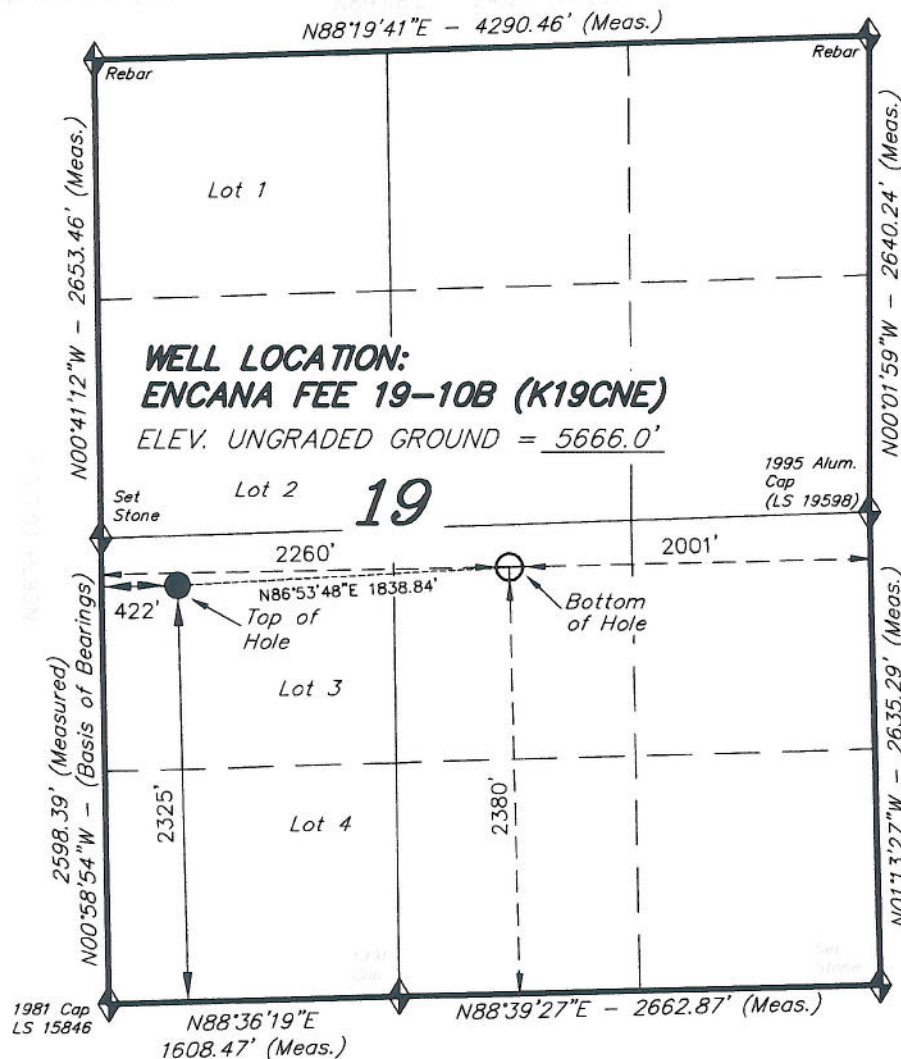
TRI STATE LAND SURVEYING & CONSULTING

180 NORTH VERNAL AVE. - VERNAL, UTAH 84078
(435) 781-2501

SHEET

2e

OF 11



NAD 83 (SURFACE LOCATION)

LATITUDE = 39°30'40.32"
(39.511201)

LONGITUDE = 107°42'48.36"
(107.713434)