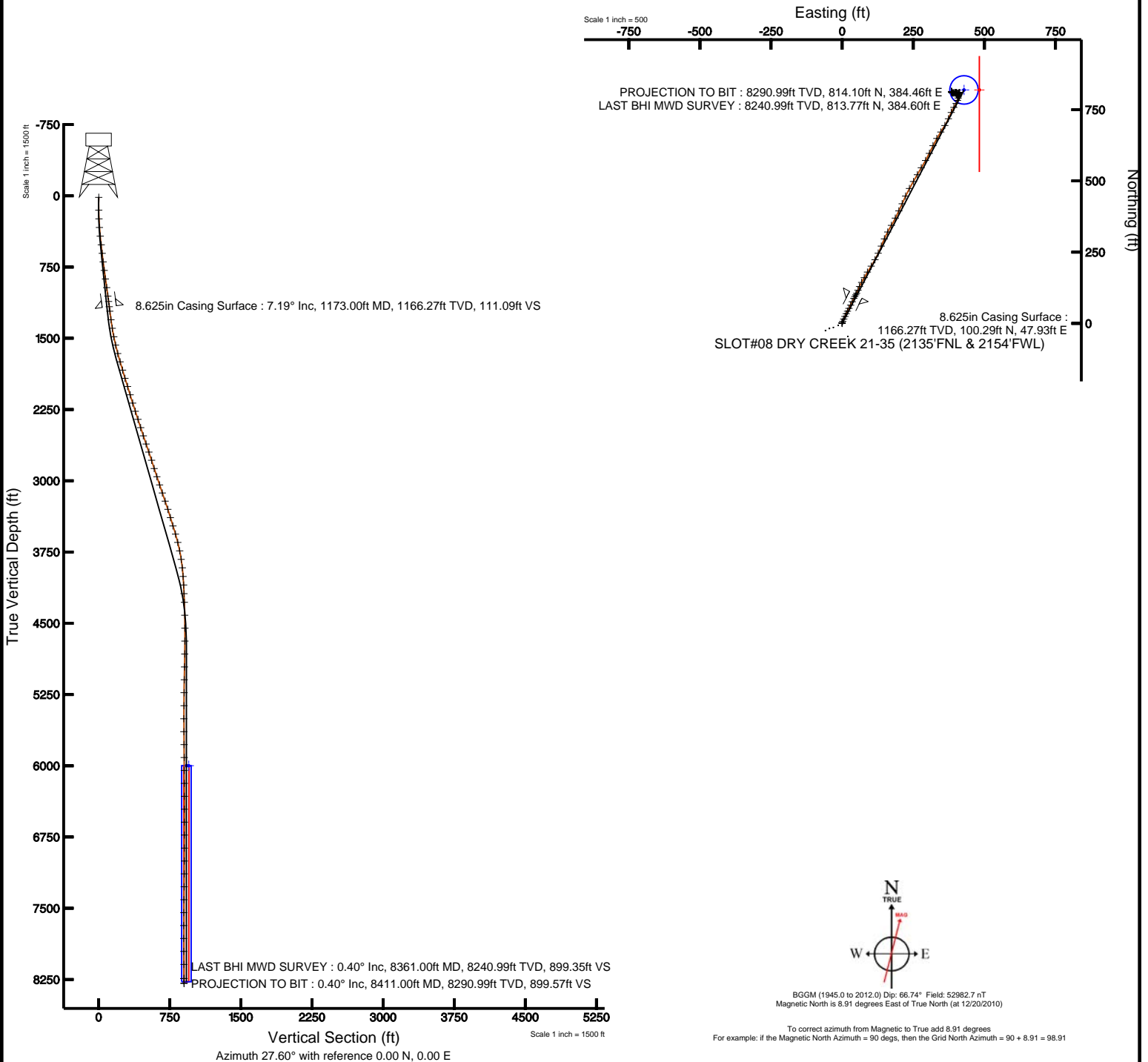




# KERR MCGEE OIL & GAS ONSHORE LP

Location: COLORADO Slot: SLOT#08 DRY CREEK 21-35 (2135'FNL & 2154'FWL)  
Field: WELD COUNTY (KERR MCGEE) Well: DRY CREEK 21-35  
Facility: SEC.35-T1N-R67W Wellbore: DRY CREEK 21-35 PWB

Plot reference wellpath is DRY CREEK 21-35 (REV-A.0) PWB	
True vertical depths are referenced to XTREME 12 (RKB)	Grid System: NAD83 / Lambert Colorado State Planes, Northern Zone (501), US feet
Measured depths are referenced to XTREME 12 (RKB)	North Reference: True north
XTREME 12 (RKB) to Mean Sea Level: 5021 feet	Scale: True distance
Mean Sea Level to Mud line (Facility: SEC.35-T1N-R67W): 0 feet	Depths are in feet
Coordinates are in feet referenced to Slot	Created by: cookdamm on 2/6/2011





# Actual Wellpath Report

DRY CREEK 21-35 AWP

Page 1 of 5



INTEQ

## REFERENCE WELLPATH IDENTIFICATION

Operator	KERR MCGEE OIL & GAS ONSHORE LP	Slot	SLOT#08 DRY CREEK 21-35 (2135'FNL & 2154'FWL)
Area	COLORADO	Well	DRY CREEK 21-35
Field	WELD COUNTY (KERR MCGEE)	Wellbore	DRY CREEK 21-35 AWB
Facility	SEC.35-T1N-R67W		

## REPORT SETUP INFORMATION

Projection System	NAD83 / Lambert Colorado State Planes, Northern Zone (501), US feet	Software System	WellArchitect® 2.0
North Reference	True	User	Cookdanm
Scale	0.999966	Report Generated	2/6/2011 at 10:27:11 PM
Convergence at slot	0.41° East	Database/Source file	Denver Server/DRY_CREEK_21-35_AWB.xml

## WELLPATH LOCATION

	Local coordinates		Grid coordinates		Geographic coordinates	
	North[ft]	East[ft]	Easting[USft]	Northing[USft]	Latitude	Longitude
Slot Location	1132.99	1680.76	3179418.71	1246776.93	40°00'32.436"N	104°51'34.128"W
Facility Reference Pt			3177746.16	1245631.99	40°00'21.240"N	104°51'55.728"W
Field Reference Pt			3197771.84	1268891.29	40°04'09.600"N	104°47'36.000"W

## WELLPATH DATUM

Calculation method	Minimum curvature	XTREME 12 (RKB) to Facility Vertical Datum	5021.00ft
Horizontal Reference Pt	Slot	XTREME 12 (RKB) to Mean Sea Level	5021.00ft
Vertical Reference Pt	XTREME 12 (RKB)	Facility Vertical Datum to Mud Line (Facility)	0.00ft
MD Reference Pt	XTREME 12 (RKB)	Section Origin	N 0.00, E 0.00 ft
Field Vertical Reference	Mean Sea Level	Section Azimuth	27.60°



# Actual Wellpath Report

DRY CREEK 21-35 AWP

Page 2 of 5



INTEQ

## REFERENCE WELLPATH IDENTIFICATION

Operator	KERR MCGEE OIL & GAS ONSHORE LP	Slot	SLOT#08 DRY CREEK 21-35 (2135'FNL & 2154'FWL)
Area	COLORADO	Well	DRY CREEK 21-35
Field	WELD COUNTY (KERR MCGEE)	Wellbore	DRY CREEK 21-35 AWB
Facility	SEC.35-T1N-R67W		

## WELLPATH DATA (80 stations) † = interpolated/extrapolated station

MD [ft]	Inclination [°]	Azimuth [°]	TVD [ft]	Vert Sect [ft]	North [ft]	East [ft]	DLS [°/100ft]	Comments
0.00†	0.000	336.200	0.00	0.00	0.00	0.00	0.00	
15.00	0.000	336.200	15.00	0.00	0.00	0.00	0.00	
150.00	0.600	336.200	150.00	0.44	0.65	-0.29	0.44	
241.00	1.900	19.500	240.98	2.23	2.50	0.03	1.67	
333.00	4.400	24.400	332.83	7.27	7.16	1.99	2.73	
424.00	6.500	24.100	423.41	15.89	15.04	5.54	2.31	
516.00	6.500	24.400	514.82	26.29	24.53	9.82	0.04	
607.00	6.300	26.200	605.25	36.42	33.71	14.15	0.31	
697.00	6.600	26.900	694.68	46.53	42.75	18.67	0.34	
788.00	7.700	27.600	784.98	57.86	52.82	23.86	1.21	
879.00	8.300	27.600	875.09	70.52	64.04	29.73	0.66	
970.00	8.500	24.400	965.11	83.81	75.98	35.55	0.56	
1061.00	7.700	26.900	1055.21	96.62	87.55	41.09	0.96	
1118.00	7.400	28.600	1111.71	104.11	94.17	44.57	0.66	
1221.00	7.000	29.300	1213.90	117.01	105.47	50.82	0.40	
1312.00	8.000	19.400	1304.12	128.82	116.28	55.63	1.79	
1403.00	9.700	25.100	1394.04	142.75	129.20	60.99	2.10	
1494.00	11.300	27.900	1483.51	159.33	144.02	68.41	1.84	
1584.00	13.000	29.000	1571.49	178.26	160.67	77.45	1.91	
1675.00	15.300	31.400	1659.73	200.48	179.87	88.67	2.61	
1766.00	16.700	33.900	1747.20	225.46	200.97	102.22	1.71	
1857.00	16.600	27.600	1834.39	251.45	223.34	115.53	1.99	
1947.00	16.500	24.100	1920.67	277.07	246.40	126.71	1.11	
2038.00	18.000	23.000	2007.57	303.98	271.15	137.48	1.69	
2129.00	17.700	23.400	2094.19	331.79	296.78	148.47	0.36	
2220.00	16.400	28.300	2181.19	358.44	320.79	160.05	2.13	
2311.00	17.900	30.400	2268.15	385.25	344.17	173.22	1.78	
2401.00	19.200	26.900	2353.47	413.87	369.30	186.92	1.90	
2492.00	17.400	25.100	2439.86	442.43	394.96	199.46	2.07	
2583.00	18.000	24.600	2526.56	470.06	420.07	211.08	0.68	
2674.00	19.600	24.100	2612.70	499.34	446.79	223.17	1.77	
2764.00	19.000	29.000	2697.65	529.05	473.38	236.44	1.92	
2855.00	17.800	31.400	2783.99	557.74	498.21	250.87	1.56	
2946.00	17.000	27.600	2870.83	584.93	521.88	264.28	1.53	
3037.00	19.200	30.700	2957.33	613.17	546.54	278.08	2.64	
3128.00	18.500	31.400	3043.44	642.52	571.72	293.24	0.81	
3218.00	18.700	24.800	3128.75	671.18	597.01	306.74	2.35	
3309.00	19.600	25.800	3214.72	701.01	624.00	319.50	1.05	
3400.00	17.100	30.500	3301.09	729.63	649.27	332.93	3.19	
3491.00	16.700	33.600	3388.16	756.00	671.69	346.96	1.08	
3582.00	17.700	30.000	3475.09	782.83	694.56	361.11	1.60	
3672.00	17.200	25.100	3560.95	809.79	718.46	373.60	1.72	
3763.00	13.900	23.700	3648.61	834.14	740.66	383.70	3.65	
3854.00	11.500	31.100	3737.38	854.11	758.44	392.78	3.18	
3945.00	8.700	28.900	3826.97	870.05	772.24	400.80	3.11	



# Actual Wellpath Report

DRY CREEK 21-35 AWP

Page 3 of 5



INTEQ

REFERENCE WELLPATH IDENTIFICATION			
Operator	KERR MCGEE OIL & GAS ONSHORE LP	Slot	SLOT#08 DRY CREEK 21-35 (2135'FNL & 2154'FWL)
Area	COLORADO	Well	DRY CREEK 21-35
Field	WELD COUNTY (KERR MCGEE)	Wellbore	DRY CREEK 21-35 AWB
Facility	SEC.35-T1N-R67W		

WELLPATH DATA (80 stations)								
MD [ft]	Inclination [°]	Azimuth [°]	TVD [ft]	Vert Sect [ft]	North [ft]	East [ft]	DLS [°/100ft]	Comments
4035.00	6.300	19.100	3916.19	881.74	782.86	405.70	3.01	
4126.00	4.500	10.000	4006.79	890.08	791.10	407.96	2.18	
4217.00	3.300	7.200	4097.57	895.94	797.21	408.91	1.33	
4308.00	2.400	14.200	4188.46	900.24	801.66	409.70	1.06	
4399.00	1.900	26.200	4279.40	903.61	804.86	410.83	0.74	
4535.00	1.200	27.600	4415.35	907.28	808.14	412.49	0.52	
4671.00	0.500	17.400	4551.33	909.29	809.97	413.33	0.52	
4807.00	0.900	253.600	4687.32	909.13	810.24	412.48	0.92	
4943.00	1.000	241.300	4823.31	907.41	809.37	410.41	0.17	
5079.00	1.300	241.000	4959.28	905.13	808.05	408.02	0.22	
5215.00	1.500	241.300	5095.24	902.36	806.44	405.11	0.15	
5351.00	0.300	176.600	5231.22	900.57	805.23	403.57	1.03	
5488.00	0.600	191.000	5368.22	899.58	804.17	403.46	0.23	
5625.00	0.900	193.500	5505.20	897.85	802.42	403.07	0.22	
5761.00	1.100	17.700	5641.20	898.10	802.63	403.22	1.47	
5897.00	1.000	349.900	5777.18	900.32	805.04	403.41	0.38	
6033.00	0.700	341.100	5913.16	901.83	806.99	402.93	0.24	
6170.00	0.300	333.100	6050.15	902.62	808.11	402.50	0.30	
6306.00	0.300	338.000	6186.15	903.06	808.75	402.20	0.02	
6442.00	0.100	323.900	6322.15	903.34	809.18	402.00	0.15	
6578.00	0.200	319.400	6458.15	903.48	809.45	401.77	0.07	
6714.00	0.200	343.600	6594.15	903.74	809.86	401.55	0.06	
6850.00	0.200	319.000	6730.15	904.00	810.27	401.33	0.06	
6987.00	0.300	277.500	6867.15	903.96	810.50	400.82	0.15	
7123.00	0.400	262.100	7003.15	903.56	810.48	399.99	0.10	
7259.00	0.900	259.200	7139.14	902.62	810.21	398.47	0.37	
7395.00	1.300	271.200	7275.11	901.27	810.04	395.88	0.34	
7531.00	1.600	251.100	7411.07	899.21	809.46	392.54	0.43	
7667.00	0.900	270.100	7547.04	897.34	808.85	389.68	0.59	
7803.00	0.700	287.700	7683.02	896.70	809.10	387.82	0.23	
7939.00	0.600	315.200	7819.01	896.78	809.86	386.53	0.24	
8075.00	0.600	335.200	7955.01	897.43	811.01	385.73	0.15	
8212.00	0.700	339.000	8092.00	898.42	812.45	385.13	0.08	
8361.00	0.400	337.300	8240.99	899.35	813.77	384.60	0.20	LAST BHI MWD SURVEY
8411.00	0.400	337.300	8290.99	899.57	814.10	384.46	0.00	PROJECTION TO BIT



# Actual Wellpath Report

DRY CREEK 21-35 AWP

Page 4 of 5



INTEQ

REFERENCE WELLPATH IDENTIFICATION			
Operator	KERR MCGEE OIL & GAS ONSHORE LP	Slot	SLOT#08 DRY CREEK 21-35 (2135'FNL & 2154'FWL)
Area	COLORADO	Well	DRY CREEK 21-35
Field	WELD COUNTY (KERR MCGEE)	Wellbore	DRY CREEK 21-35 AWB
Facility	SEC.35-T1N-R67W		

HOLE & CASING SECTIONS Ref Wellbore: DRY CREEK 21-35 AWB Ref Wellpath: DRY CREEK 21-35 AWP									
String/Diameter	Start MD [ft]	End MD [ft]	Interval [ft]	Start TVD [ft]	End TVD [ft]	Start N/S [ft]	Start E/W [ft]	End N/S [ft]	End E/W [ft]
12.25in Open Hole	15.00	1173.00	1158.00	15.00	1166.27	0.00	0.00	100.29	47.93
8.625in Casing Surface	15.00	1173.00	1158.00	15.00	1166.27	0.00	0.00	100.29	47.93
7.875in Open Hole	1173.00	8411.00	7238.00	1166.27	8290.99	100.29	47.93	814.10	384.46

TARGETS									
Name	MD [ft]	TVD [ft]	North [ft]	East [ft]	Grid East [srv ft]	Grid North [srv ft]	Latitude	Longitude	Shape
DRY CREEK 21-35 GEO TARGET 50' RADIUS (1315'FNL & 2590'FWL, REV-1)		6000.00	819.65	428.58	3179841.34	1247599.63	40°00'40.536"N	104°51'28.620"W	circle
DRY CREEK 21-35 HARDLINE 54'E OF GEO TARGET		6000.00	819.65	482.58	3179895.34	1247600.02	40°00'40.536"N	104°51'27.926"W	point

WELLPATH COMPOSITION Ref Wellbore: DRY CREEK 21-35 AWB Ref Wellpath: DRY CREEK 21-35 AWP				
Start MD [ft]	End MD [ft]	Positional Uncertainty Model	Log Name/Comment	Wellbore
15.00	1118.00	NaviTrak (Standard)	BHI MWD SURVEYS 12.25 HOLE <150-1118>	DRY CREEK 21-35 AWB
1118.00	8361.00	NaviTrak (Standard)	BHI MWD SURVEYS 7.875 HOLE <1221-8361>	DRY CREEK 21-35 AWB
8361.00	8411.00	Blind Drilling (std)	Projection to bit	DRY CREEK 21-35 AWB



# Actual Wellpath Report

DRY CREEK 21-35 AWP

Page 5 of 5



INTEQ

## REFERENCE WELLPATH IDENTIFICATION

Operator	KERR MCGEE OIL & GAS ONSHORE LP	Slot	SLOT#08 DRY CREEK 21-35 (2135'FNL & 2154'FWL)
Area	COLORADO	Well	DRY CREEK 21-35
Field	WELD COUNTY (KERR MCGEE)	Wellbore	DRY CREEK 21-35 AWB
Facility	SEC.35-T1N-R67W		

## WELLPATH COMMENTS

MD [ft]	Inclination [°]	Azimuth [°]	TVD [ft]	Comment
8361.00	0.400	337.300	8240.99	LAST BHI MWD SURVEY
8411.00	0.400	337.300	8290.99	PROJECTION TO BIT