

# KERR MCGEE OIL & GAS ONSHORE LP

Location: COLORADO Slot: SLOT#03 GUERRERO 23-7 (519'FSL & 542'FWL)  
Field: WELD COUNTY (KERR MCGEE) Well: GUERRERO 23-7  
Facility: SEC.07-T2N-R65W Wellbore: GUERRERO 23-7 PWB



## Well Profile Data

Design Comment	MD (ft)	Inc (°)	Az (°)	TVD (ft)	Local N (ft)	Local E (ft)	DLS (°/100ft)	VS (ft)
Tie On	15.00	0.000	40.000	15.00	0.00	0.00	0.00	0.00
End of Tangent	200.00	0.000	40.000	200.00	0.00	0.00	0.00	0.00
End of Build	440.00	6.000	40.000	439.56	9.62	8.07	2.50	11.12
End of 3D Arc	658.81	10.000	67.956	656.27	25.52	33.05	2.50	40.27
End of Tangent	900.00	10.000	67.956	893.80	41.24	71.87	0.00	82.15
End of Build (S)	1500.00	25.000	67.956	1464.40	108.76	238.63	2.50	262.06
End of Tangent (S)	5407.70	25.000	67.956	5005.98	728.59	1769.36	0.00	1913.50
Drop (S)	6407.70	0.000	67.956	5974.54	809.18	1968.39	2.50	2128.22
End of Tangent	8432.15	0.000	67.956	7999.00	809.18	1968.39	0.00	2128.22

## Location Information

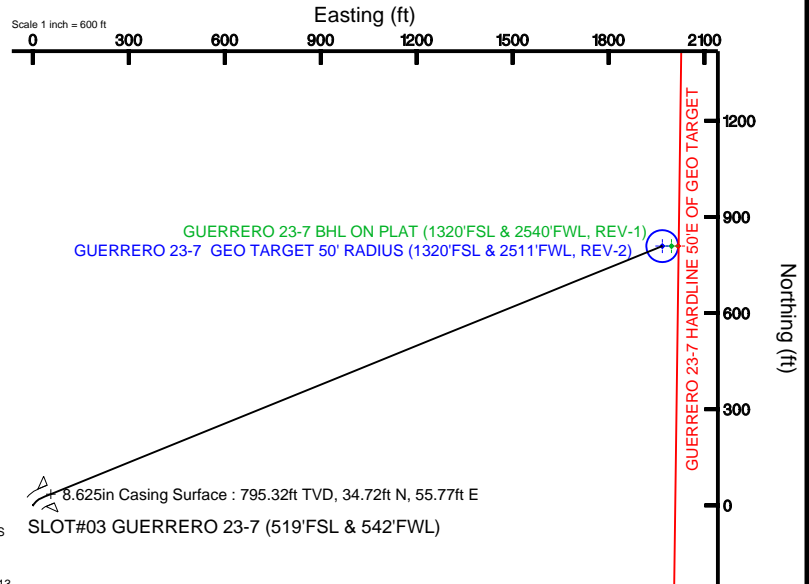
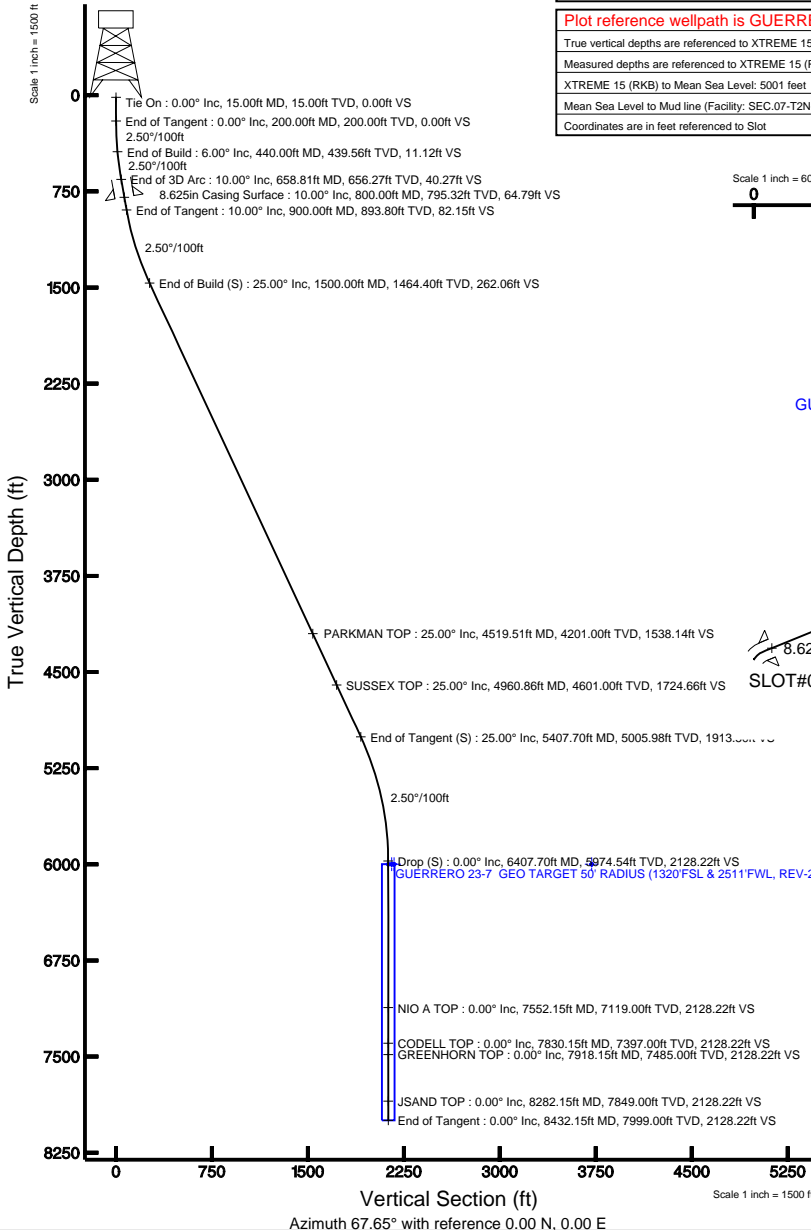
Facility Name			Grid East (USft)	Grid North (USft)	Latitude	Longitude
SEC.07-T2N-R65W			3219721.287	1297490.261	40°08'50.395"N	104°42'50.411"W
Slot	Local N (ft)	Local E (ft)	Grid East (USft)	Grid North (USft)	Latitude	Longitude
SLOT#03 GUERRERO 23-7 (519'FSL & 542'FWL)	0.73	32.15	3219753.428	1297491.275	40°08'50.402"N	104°42'49.997"W
XTREME 15 (RKB) to Mud line (Facility: SEC.07-T2N-R65W)					5001ft	
Mean Sea Level to Mud line (Facility: SEC.07-T2N-R65W)					0ft	
XTREME 15 (RKB) to Mean Sea Level					5001ft	

## Targets

Name	MD (ft)	TVD (ft)	Local N (ft)	Local E (ft)	Grid East (USft)	Grid North (USft)	Latitude	Longitude
GUERRERO 23-7 GEO TARGET 50' RADIUS (1320'FSL & 2511'FWL, REV-2)	6000.00	809.18	1968.39	3221714.48	1298317.84	40°08'58.398"N	104°42'24.648"W	
GUERRERO 23-7 BHL ON PLAT (1320'FSL & 2540'FWL, REV-1)	6000.00	809.18	1997.39	3221743.48	1298318.10	40°08'58.398"N	104°42'24.275"W	
GUERRERO 23-7 HARDLINE 50'E OF GEO TARGET	6000.00	809.18	2018.00	3221764.09	1298318.28	40°08'58.398"N	104°42'24.000"W	
GUERRERO 23-7 HARDLINE 50'E OF GEO TARGET p#1	6000.00	4737.03	2073.66	3221784.93	1302246.30	40°09'37.213"N	104°42'23.288"W	
GUERRERO 23-7 HARDLINE 50'E OF GEO TARGET p#2	6000.00	-510.66	2000.02	3221757.81	1296998.38	40°08'45.305"N	104°42'24.242"W	

Plot reference wellpath is GUERRERO 23-7 (REV-B.0) PWP

True vertical depths are referenced to XTREME 15 (RKB)	Grid System: NAD83 / Lambert Colorado State Planes, Northern Zone (501), US feet
Measured depths are referenced to XTREME 15 (RKB)	North Reference: True north
XTREME 15 (RKB) to Mean Sea Level: 5001 feet	Scale: True distance
Mean Sea Level to Mud line (Facility: SEC.07-T2N-R65W): 0 feet	Depths are in feet
Coordinates are in feet referenced to Slot	Created by: cookdam on 4/7/2011



BGGM (1945.0 to 2012.0) Dip: 66.87° Field: 53041.5 nT  
Magnetic North is 8.81 degrees East of True North (at 4/1/2011)

To correct azimuth from Magnetic to True add 8.81 degrees  
For example: if the Magnetic North Azimuth = 90 degs, then the Grid North Azimuth = 90 + 8.81 = 98.81



# Planned Wellpath Report

GUERRERO 23-7 (REV-B.0) PWP

Page 1 of 6



INTEQ

## REFERENCE WELLPATH IDENTIFICATION

Operator	KERR MCGEE OIL & GAS ONSHORE LP	Slot	SLOT#03 GUERRERO 23-7 (519'FSL & 542'FWL)
Area	COLORADO	Well	GUERRERO 23-7
Field	WELD COUNTY (KERR MCGEE)	Wellbore	GUERRERO 23-7 PWB
Facility	SEC.07-T2N-R65W		

## REPORT SETUP INFORMATION

Projection System	NAD83 / Lambert Colorado State Planes, Northern Zone (501), US feet	Software System	WellArchitect® 2.0
North Reference	True	User	Cookdanm
Scale	0.999958	Report Generated	4/7/2011 at 3:39:21 PM
Convergence at slot	0.51° East	Database/Source file	Denver Server/GUERRERO_23-7_PWB.xml

## WELLPATH LOCATION

	Local coordinates		Grid coordinates		Geographic coordinates	
	North[ft]	East[ft]	Easting[USft]	Northing[USft]	Latitude	Longitude
Slot Location	0.73	32.15	3219753.43	1297491.28	40°08'50.402"N	104°42'49.997"W
Facility Reference Pt			3219721.29	1297490.26	40°08'50.395"N	104°42'50.411"W
Field Reference Pt			3197771.84	1268891.29	40°04'09.600"N	104°47'36.000"W

## WELLPATH DATUM

Calculation method	Minimum curvature	XTREME 15 (RKB) to Facility Vertical Datum	5001.00ft
Horizontal Reference Pt	Slot	XTREME 15 (RKB) to Mean Sea Level	5001.00ft
Vertical Reference Pt	XTREME 15 (RKB)	Facility Vertical Datum to Mud Line (Facility)	0.00ft
MD Reference Pt	XTREME 15 (RKB)	Section Origin	N 0.00, E 0.00 ft
Field Vertical Reference	Mean Sea Level	Section Azimuth	67.65°



# Planned Wellpath Report

GUERRERO 23-7 (REV-B.0) PWP

Page 2 of 6



## REFERENCE WELLPATH IDENTIFICATION

Operator	KERR MCGEE OIL & GAS ONSHORE LP	Slot	SLOT#03 GUERRERO 23-7 (519'FSL & 542'FWL)
Area	COLORADO	Well	GUERRERO 23-7
Field	WELD COUNTY (KERR MCGEE)	Wellbore	GUERRERO 23-7 PWB
Facility	SEC.07-T2N-R65W		

## WELLPATH DATA (100 stations) † = interpolated/extrapolated station

MD [ft]	Inclination [°]	Azimuth [°]	TVD [ft]	Vert Sect [ft]	North [ft]	East [ft]	DLS [°/100ft]	Comments
0.00†	0.000	40.000	0.00	0.00	0.00	0.00	0.00	
15.00	0.000	40.000	15.00	0.00	0.00	0.00	0.00	Tie On
115.00†	0.000	40.000	115.00	0.00	0.00	0.00	0.00	
200.00	0.000	40.000	200.00	0.00	0.00	0.00	0.00	End of Tangent
215.00†	0.375	40.000	215.00	0.04	0.04	0.03	2.50	
315.00†	2.875	40.000	314.95	2.56	2.21	1.85	2.50	
415.00†	5.375	40.000	414.68	8.93	7.72	6.48	2.50	
440.00	6.000	40.000	439.56	11.12	9.62	8.07	2.50	End of Build
515.00†	7.156	52.961	514.07	19.11	15.43	14.32	2.50	
615.00†	9.078	64.386	613.07	33.02	22.60	26.41	2.50	
658.81	10.000	67.956	656.27	40.27	25.52	33.05	2.50	End of 3D Arc
715.00†	10.000	67.956	711.61	50.03	29.18	42.09	0.00	
815.00†	10.000	67.956	810.09	67.39	35.70	58.19	0.00	
900.00	10.000	67.956	893.80	82.15	41.24	71.87	0.00	End of Tangent
915.00†	10.375	67.956	908.56	84.81	42.24	74.33	2.50	
1015.00†	12.875	67.956	1006.51	104.95	49.80	93.00	2.50	
1115.00†	15.375	67.956	1103.47	129.36	58.96	115.62	2.50	
1215.00†	17.875	67.956	1199.29	157.96	69.69	142.14	2.50	
1315.00†	20.375	67.956	1293.76	190.72	81.99	172.51	2.50	
1415.00†	22.875	67.956	1386.71	227.57	95.82	206.66	2.50	
1500.00	25.000	67.956	1464.40	262.06	108.76	238.63	2.50	End of Build (S)
1515.00†	25.000	67.956	1477.99	268.40	111.14	244.50	0.00	
1615.00†	25.000	67.956	1568.62	310.66	127.00	283.67	0.00	
1715.00†	25.000	67.956	1659.25	352.92	142.87	322.85	0.00	
1815.00†	25.000	67.956	1749.88	395.18	158.73	362.02	0.00	
1915.00†	25.000	67.956	1840.52	437.44	174.59	401.19	0.00	
2015.00†	25.000	67.956	1931.15	479.70	190.45	440.36	0.00	
2115.00†	25.000	67.956	2021.78	521.96	206.31	479.54	0.00	
2215.00†	25.000	67.956	2112.41	564.23	222.17	518.71	0.00	
2315.00†	25.000	67.956	2203.04	606.49	238.04	557.88	0.00	
2415.00†	25.000	67.956	2293.67	648.75	253.90	597.05	0.00	
2515.00†	25.000	67.956	2384.30	691.01	269.76	636.22	0.00	
2615.00†	25.000	67.956	2474.93	733.27	285.62	675.40	0.00	
2715.00†	25.000	67.956	2565.56	775.53	301.48	714.57	0.00	
2815.00†	25.000	67.956	2656.19	817.79	317.34	753.74	0.00	
2915.00†	25.000	67.956	2746.82	860.05	333.21	792.91	0.00	
3015.00†	25.000	67.956	2837.45	902.32	349.07	832.09	0.00	
3115.00†	25.000	67.956	2928.09	944.58	364.93	871.26	0.00	
3215.00†	25.000	67.956	3018.72	986.84	380.79	910.43	0.00	
3315.00†	25.000	67.956	3109.35	1029.10	396.65	949.60	0.00	
3415.00†	25.000	67.956	3199.98	1071.36	412.51	988.78	0.00	
3515.00†	25.000	67.956	3290.61	1113.62	428.38	1027.95	0.00	
3615.00†	25.000	67.956	3381.24	1155.88	444.24	1067.12	0.00	
3715.00†	25.000	67.956	3471.87	1198.14	460.10	1106.29	0.00	
3815.00†	25.000	67.956	3562.50	1240.41	475.96	1145.46	0.00	



# Planned Wellpath Report

GUERRERO 23-7 (REV-B.0) PWP

Page 3 of 6



INTEQ

## REFERENCE WELLPATH IDENTIFICATION

Operator	KERR MCGEE OIL & GAS ONSHORE LP	Slot	SLOT#03 GUERRERO 23-7 (519'FSL & 542'FWL)
Area	COLORADO	Well	GUERRERO 23-7
Field	WELD COUNTY (KERR MCGEE)	Wellbore	GUERRERO 23-7 PWB
Facility	SEC.07-T2N-R65W		

## WELLPATH DATA (100 stations) † = interpolated/extrapolated station

MD [ft]	Inclination [°]	Azimuth [°]	TVD [ft]	Vert Sect [ft]	North [ft]	East [ft]	DLS [°/100ft]	Comments
3915.00†	25.000	67.956	3653.13	1282.67	491.82	1184.64	0.00	
4015.00†	25.000	67.956	3743.76	1324.93	507.69	1223.81	0.00	
4115.00†	25.000	67.956	3834.39	1367.19	523.55	1262.98	0.00	
4215.00†	25.000	67.956	3925.02	1409.45	539.41	1302.15	0.00	
4315.00†	25.000	67.956	4015.65	1451.71	555.27	1341.33	0.00	
4415.00†	25.000	67.956	4106.29	1493.97	571.13	1380.50	0.00	
4515.00†	25.000	67.956	4196.92	1536.23	586.99	1419.67	0.00	
4519.51†	25.000	67.956	4201.00	1538.14	587.71	1421.44	0.00	PARKMAN TOP
4615.00†	25.000	67.956	4287.55	1578.50	602.86	1458.84	0.00	
4715.00†	25.000	67.956	4378.18	1620.76	618.72	1498.02	0.00	
4815.00†	25.000	67.956	4468.81	1663.02	634.58	1537.19	0.00	
4915.00†	25.000	67.956	4559.44	1705.28	650.44	1576.36	0.00	
4960.86†	25.000	67.956	4601.00	1724.66	657.71	1594.32	0.00	SUSSEX TOP
5015.00†	25.000	67.956	4650.07	1747.54	666.30	1615.53	0.00	
5115.00†	25.000	67.956	4740.70	1789.80	682.16	1654.70	0.00	
5215.00†	25.000	67.956	4831.33	1832.06	698.03	1693.88	0.00	
5315.00†	25.000	67.956	4921.96	1874.32	713.89	1733.05	0.00	
5407.70	25.000	67.956	5005.98	1913.50	728.59	1769.36	0.00	End of Tangent (S)
5415.00†	24.817	67.956	5012.60	1916.58	729.75	1772.21	2.50	
5515.00†	22.317	67.956	5104.25	1956.55	744.75	1809.27	2.50	
5615.00†	19.817	67.956	5197.56	1992.50	758.24	1842.58	2.50	
5715.00†	17.317	67.956	5292.35	2024.34	770.19	1872.10	2.50	
5815.00†	14.817	67.956	5388.43	2052.01	780.58	1897.75	2.50	
5915.00†	12.317	67.956	5485.63	2075.47	789.38	1919.49	2.50	
6015.00†	9.817	67.956	5583.77	2094.66	796.59	1937.28	2.50	
6115.00†	7.317	67.956	5682.64	2109.56	802.18	1951.09	2.50	
6215.00†	4.817	67.956	5782.07	2120.13	806.14	1960.89	2.50	
6315.00†	2.317	67.956	5881.87	2126.35	808.48	1966.65	2.50	
6407.70	0.000	67.956	5974.54 <sup>1</sup>	2128.22	809.18	1968.39	2.50	Drop (S)
6415.00†	0.000	67.956	5981.85	2128.22	809.18	1968.39	0.00	
6515.00†	0.000	67.956	6081.85	2128.22	809.18	1968.39	0.00	
6615.00†	0.000	67.956	6181.85	2128.22	809.18	1968.39	0.00	
6715.00†	0.000	67.956	6281.85	2128.22	809.18	1968.39	0.00	
6815.00†	0.000	67.956	6381.85	2128.22	809.18	1968.39	0.00	
6915.00†	0.000	67.956	6481.85	2128.22	809.18	1968.39	0.00	
7015.00†	0.000	67.956	6581.85	2128.22	809.18	1968.39	0.00	
7115.00†	0.000	67.956	6681.85	2128.22	809.18	1968.39	0.00	
7215.00†	0.000	67.956	6781.85	2128.22	809.18	1968.39	0.00	
7315.00†	0.000	67.956	6881.85	2128.22	809.18	1968.39	0.00	
7415.00†	0.000	67.956	6981.85	2128.22	809.18	1968.39	0.00	
7515.00†	0.000	67.956	7081.85	2128.22	809.18	1968.39	0.00	
7552.15†	0.000	67.956	7119.00	2128.22	809.18	1968.39	0.00	NIO A TOP
7615.00†	0.000	67.956	7181.85	2128.22	809.18	1968.39	0.00	
7715.00†	0.000	67.956	7281.85	2128.22	809.18	1968.39	0.00	
7815.00†	0.000	67.956	7381.85	2128.22	809.18	1968.39	0.00	



# Planned Wellpath Report

GUERRERO 23-7 (REV-B.0) PWP

Page 4 of 6



INTEQ

## REFERENCE WELLPATH IDENTIFICATION

Operator	KERR MCGEE OIL & GAS ONSHORE LP	Slot	SLOT#03 GUERRERO 23-7 (519'FSL & 542'FWL)
Area	COLORADO	Well	GUERRERO 23-7
Field	WELD COUNTY (KERR MCGEE)	Wellbore	GUERRERO 23-7 PWB
Facility	SEC.07-T2N-R65W		

## WELLPATH DATA (100 stations) † = interpolated/extrapolated station

MD [ft]	Inclination [°]	Azimuth [°]	TVD [ft]	Vert Sect [ft]	North [ft]	East [ft]	DLS [°/100ft]	Comments
7830.15†	0.000	67.956	7397.00	2128.22	809.18	1968.39	0.00	CODELL TOP
7915.00†	0.000	67.956	7481.85	2128.22	809.18	1968.39	0.00	
7918.15†	0.000	67.956	7485.00	2128.22	809.18	1968.39	0.00	GREENHORN TOP
8015.00†	0.000	67.956	7581.85	2128.22	809.18	1968.39	0.00	
8115.00†	0.000	67.956	7681.85	2128.22	809.18	1968.39	0.00	
8215.00†	0.000	67.956	7781.85	2128.22	809.18	1968.39	0.00	
8282.15†	0.000	67.956	7849.00	2128.22	809.18	1968.39	0.00	JSAND TOP
8315.00†	0.000	67.956	7881.85	2128.22	809.18	1968.39	0.00	
8415.00†	0.000	67.956	7981.85	2128.22	809.18	1968.39	0.00	
8432.15	0.000	67.956	7999.00	2128.22	809.18	1968.39	0.00	End of Tangent

## HOLE & CASING SECTIONS

Ref Wellbore: GUERRERO 23-7 PWB

Ref Wellpath: GUERRERO 23-7 (REV-B.0) PWP

String/Diameter	Start MD [ft]	End MD [ft]	Interval [ft]	Start TVD [ft]	End TVD [ft]	Start N/S [ft]	Start E/W [ft]	End N/S [ft]	End E/W [ft]
12.25in Open Hole	15.00	800.00	785.00	15.00	795.32	0.00	0.00	34.72	55.77
8.625in Casing Surface	15.00	800.00	785.00	15.00	795.32	0.00	0.00	34.72	55.77
7.875in Open Hole	800.00	8432.15	7632.15	795.32	7999.00	34.72	55.77	809.18	1968.39



# Planned Wellpath Report

GUERRERO 23-7 (REV-B.0) PWP

Page 5 of 6



INTEQ

REFERENCE WELLPATH IDENTIFICATION			
Operator	KERR MCGEE OIL & GAS ONSHORE LP	Slot	SLOT#03 GUERRERO 23-7 (519'FSL & 542'FWL)
Area	COLORADO	Well	GUERRERO 23-7
Field	WELD COUNTY (KERR MCGEE)	Wellbore	GUERRERO 23-7 PWB
Facility	SEC.07-T2N-R65W		

TARGETS									
Name	MD [ft]	TVD [ft]	North [ft]	East [ft]	Grid East [srv ft]	Grid North [srv ft]	Latitude	Longitude	Shape
1) GUERRERO 23-7 GEO TARGET 50' RADIUS (1320'FSL & 2511'FWL, REV-2)		6000.00	809.18	1968.39	3221714.48	1298317.84	40°08'58.398"N	104°42'24.648"W	circle
GUERRERO 23-7 BHL ON PLAT (1320'FSL & 2540'FWL, REV-1)		6000.00	809.18	1997.39	3221743.48	1298318.10	40°08'58.398"N	104°42'24.275"W	point
GUERRERO 23-7 HARDLINE 50'E OF GEO TARGET		6000.00	809.18	2018.00	3221764.09	1298318.28	40°08'58.398"N	104°42'24.009"W	point
GUERRERO 23-7 HARDLINE 50'E OF GEO TARGET pt#1		6000.00	4737.03	2073.66	3221784.93	1302246.30	40°09'37.213"N	104°42'23.288"W	point
GUERRERO 23-7 HARDLINE 50'E OF GEO TARGET pt#2		6000.00	-510.66	2000.02	3221757.81	1296998.38	40°08'45.355"N	104°42'24.242"W	point

SURVEY PROGRAM Ref Wellbore: GUERRERO 23-7 PWB					Ref Wellpath: GUERRERO 23-7 (REV-B.0) PWP	
Start MD [ft]	End MD [ft]	Positional Uncertainty Model			Log Name/Comment	Wellbore
15.00	8432.15	NaviTrak (Standard)				GUERRERO 23-7 PWB



# Planned Wellpath Report

GUERRERO 23-7 (REV-B.0) PWP

Page 6 of 6



INTEQ

## REFERENCE WELLPATH IDENTIFICATION

Operator	KERR MCGEE OIL & GAS ONSHORE LP	Slot	SLOT#03 GUERRERO 23-7 (519'FSL & 542'FWL)
Area	COLORADO	Well	GUERRERO 23-7
Field	WELD COUNTY (KERR MCGEE)	Wellbore	GUERRERO 23-7 PWB
Facility	SEC.07-T2N-R65W		

## WELLPATH COMMENTS

MD [ft]	Inclination [°]	Azimuth [°]	TVD [ft]	Comment
4519.51	25.000	67.956	4201.00	PARKMAN TOP
4960.86	25.000	67.956	4601.00	SUSSEX TOP
7552.15	0.000	67.956	7119.00	NIO A TOP
7830.15	0.000	67.956	7397.00	CODELL TOP
7918.15	0.000	67.956	7485.00	GREENHORN TOP
8282.15	0.000	67.956	7849.00	JSAND TOP