

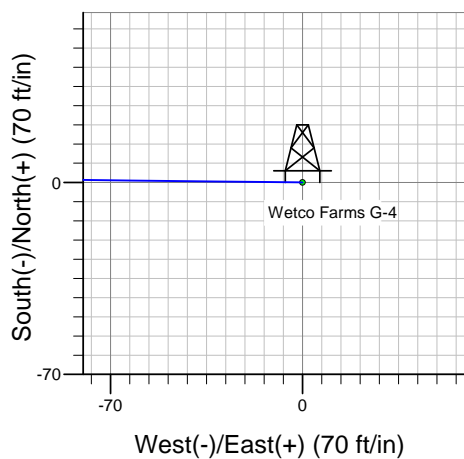
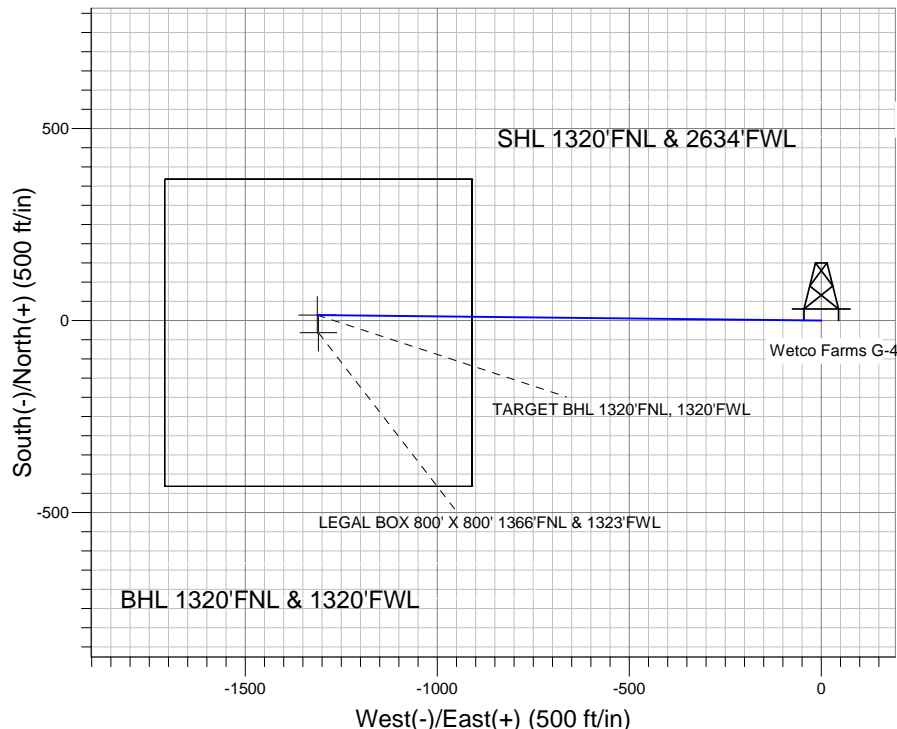
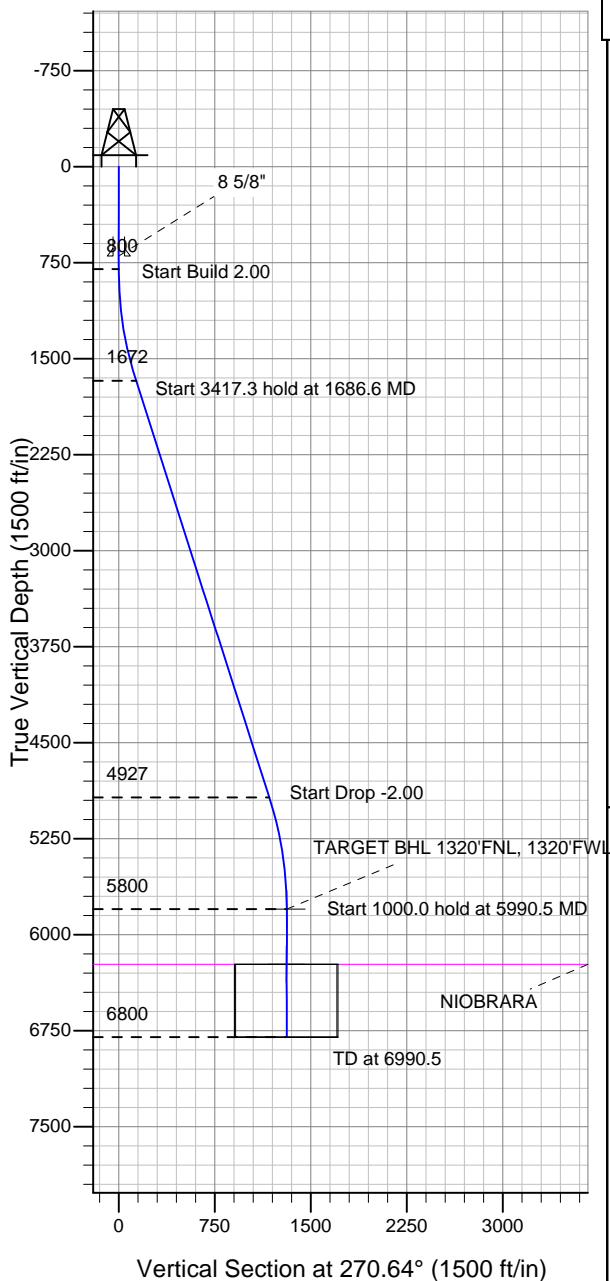
Well Name: Wetco Farms G-4

Surface Location: Wetco Farms G-4 Pad Sec.4-T4N-R63W
 North American Datum 1983 US State Plane 1983 Colorado Northern Zone

Ground Elevation: 4566.0

+N/-S +E/-W Northing Easting Latitude Longitude Slot
 0.0 0.0 1370309.58 3294644.82 40° 20' 42.288 N 104° 26' 34.440 W
 Original Well Elev WELL @ 4579.0ft (Original Well Elev)

BONANZA CREEK ENERGY OPERATING



Wetco Farms G-4 Pad Sec.4-T4N-R63W
 Wetco Farms G-4
 Plan #1 (1-28-11)
 15:35, January 28 2011



Azimuths to True North
 Magnetic North: 8.74°

Magnetic Field
 Strength: 53179.3nT
 Dip Angle: 67.07°
 Date: 1/28/2011
 Model: IGRF2010

WELLBORE TARGET DETAILS (LAT/LONG)

Name	TVD	+N/-S	+E/-W	Latitude	Longitude	Shape
TARGET BHL 1320'FNL, 1320'FWL	5800.0	14.6	-1312.9	40° 20' 42.432 N	104° 26' 51.396 W	Point
LEGAL BOX 800' X 800' 1366'FNL & 1323'FWL	6231.0	-31.4	-1309.9	40° 20' 41.977 N	104° 26' 51.357 W	Rectangle (Sides: L800.0 W800.0)

SECTION DETAILS

Sec	MD	Inc	Azi	TVD	+N/-S	+E/-W	DLeg	TFace	VSec	Target
1	0.0	0.00	0.00	0.0	0.0	0.0	0.00	0.00	0.0	
2	800.0	0.00	0.00	800.0	0.0	0.0	0.00	0.00	0.0	
3	1686.6	17.73	270.64	1672.5	1.5	-136.1	2.00	270.64	136.1	
4	5103.9	17.73	270.64	4927.5	13.1	-1176.8	0.00	0.00	1176.9	
5	5990.5	0.00	0.00	5800.0	14.6	-1312.9	2.00	180.00	1313.0	TARGET BHL 1320'FNL, 1320'FWL
6	6990.5	0.00	0.00	6800.0	14.6	-1312.9	0.00	0.00	1313.0	



Directional

BONANZA CREEK ENERGY OPERATING

SEC.4-T4N-R63W

Wetco Farms G-4 Pad Sec.4-T4N-R63W

Wetco Farms G-4

Wellbore #1

Plan: Plan #1 (1-28-11)

Standard Planning Report

28 January, 2011

Plan Sections										
Measured Depth (ft)	Inclination (°)	Azimuth (°)	Vertical Depth (ft)	+N/-S (ft)	+E/-W (ft)	Dogleg Rate (°/100ft)	Build Rate (°/100ft)	Turn Rate (°/100ft)	TFO (°)	Target
0.0	0.00	0.00	0.0	0.0	0.0	0.00	0.00	0.00	0.00	
800.0	0.00	0.00	800.0	0.0	0.0	0.00	0.00	0.00	0.00	
1,686.6	17.73	270.64	1,672.5	1.5	-136.1	2.00	2.00	0.00	270.64	
5,103.9	17.73	270.64	4,927.5	13.1	-1,176.8	0.00	0.00	0.00	0.00	
5,990.5	0.00	0.00	5,800.0	14.6	-1,312.9	2.00	-2.00	0.00	180.00	TARGET BHL 1320
6,990.5	0.00	0.00	6,800.0	14.6	-1,312.9	0.00	0.00	0.00	0.00	

Database:	Landmark	Local Co-ordinate Reference:	Well Wetco Farms G-4
Company:	BONANZA CREEK ENERGY OPERATING	TVD Reference:	WELL @ 4579.0ft (Original Well Elev)
Project:	SEC.4-T4N-R63W	MD Reference:	WELL @ 4579.0ft (Original Well Elev)
Site:	Wetco Farms G-4 Pad Sec.4-T4N-R63W	North Reference:	True
Well:	Wetco Farms G-4	Survey Calculation Method:	Minimum Curvature
Wellbore:	Wellbore #1		
Design:	Plan #1 (1-28-11)		

Planned Survey									
Measured Depth (ft)	Inclination (°)	Azimuth (°)	Vertical Depth (ft)	+N/-S (ft)	+E/-W (ft)	Vertical Section (ft)	Dogleg Rate (°/100ft)	Build Rate (°/100ft)	Turn Rate (°/100ft)
0.0	0.00	0.00	0.0	0.0	0.0	0.0	0.00	0.00	0.00
40.0	0.00	0.00	40.0	0.0	0.0	0.0	0.00	0.00	0.00
80.0	0.00	0.00	80.0	0.0	0.0	0.0	0.00	0.00	0.00
120.0	0.00	0.00	120.0	0.0	0.0	0.0	0.00	0.00	0.00
160.0	0.00	0.00	160.0	0.0	0.0	0.0	0.00	0.00	0.00
200.0	0.00	0.00	200.0	0.0	0.0	0.0	0.00	0.00	0.00
240.0	0.00	0.00	240.0	0.0	0.0	0.0	0.00	0.00	0.00
280.0	0.00	0.00	280.0	0.0	0.0	0.0	0.00	0.00	0.00
320.0	0.00	0.00	320.0	0.0	0.0	0.0	0.00	0.00	0.00
360.0	0.00	0.00	360.0	0.0	0.0	0.0	0.00	0.00	0.00
400.0	0.00	0.00	400.0	0.0	0.0	0.0	0.00	0.00	0.00
440.0	0.00	0.00	440.0	0.0	0.0	0.0	0.00	0.00	0.00
480.0	0.00	0.00	480.0	0.0	0.0	0.0	0.00	0.00	0.00
520.0	0.00	0.00	520.0	0.0	0.0	0.0	0.00	0.00	0.00
560.0	0.00	0.00	560.0	0.0	0.0	0.0	0.00	0.00	0.00
600.0	0.00	0.00	600.0	0.0	0.0	0.0	0.00	0.00	0.00
640.0	0.00	0.00	640.0	0.0	0.0	0.0	0.00	0.00	0.00
680.0	0.00	0.00	680.0	0.0	0.0	0.0	0.00	0.00	0.00
697.0	0.00	0.00	697.0	0.0	0.0	0.0	0.00	0.00	0.00
8 5/8"									
720.0	0.00	0.00	720.0	0.0	0.0	0.0	0.00	0.00	0.00
760.0	0.00	0.00	760.0	0.0	0.0	0.0	0.00	0.00	0.00
800.0	0.00	0.00	800.0	0.0	0.0	0.0	0.00	0.00	0.00
840.0	0.80	270.64	840.0	0.0	-0.3	0.3	2.00	2.00	0.00
880.0	1.60	270.64	880.0	0.0	-1.1	1.1	2.00	2.00	0.00
920.0	2.40	270.64	920.0	0.0	-2.5	2.5	2.00	2.00	0.00
960.0	3.20	270.64	959.9	0.0	-4.5	4.5	2.00	2.00	0.00
1,000.0	4.00	270.64	999.8	0.1	-7.0	7.0	2.00	2.00	0.00
1,040.0	4.80	270.64	1,039.7	0.1	-10.0	10.0	2.00	2.00	0.00
1,080.0	5.60	270.64	1,079.6	0.2	-13.7	13.7	2.00	2.00	0.00
1,120.0	6.40	270.64	1,119.3	0.2	-17.9	17.9	2.00	2.00	0.00
1,160.0	7.20	270.64	1,159.1	0.3	-22.6	22.6	2.00	2.00	0.00
1,200.0	8.00	270.64	1,198.7	0.3	-27.9	27.9	2.00	2.00	0.00
1,240.0	8.80	270.64	1,238.3	0.4	-33.7	33.7	2.00	2.00	0.00
1,280.0	9.60	270.64	1,277.8	0.4	-40.1	40.1	2.00	2.00	0.00
1,320.0	10.40	270.64	1,317.1	0.5	-47.1	47.1	2.00	2.00	0.00
1,360.0	11.20	270.64	1,356.4	0.6	-54.6	54.6	2.00	2.00	0.00
1,400.0	12.00	270.64	1,395.6	0.7	-62.6	62.6	2.00	2.00	0.00
1,440.0	12.80	270.64	1,434.7	0.8	-71.2	71.2	2.00	2.00	0.00
1,480.0	13.60	270.64	1,473.6	0.9	-80.3	80.3	2.00	2.00	0.00
1,520.0	14.40	270.64	1,512.4	1.0	-90.0	90.0	2.00	2.00	0.00
1,560.0	15.20	270.64	1,551.1	1.1	-100.2	100.2	2.00	2.00	0.00
1,600.0	16.00	270.64	1,589.6	1.2	-111.0	111.0	2.00	2.00	0.00
1,640.0	16.80	270.64	1,628.0	1.4	-122.3	122.3	2.00	2.00	0.00
1,680.0	17.60	270.64	1,666.2	1.5	-134.1	134.1	2.00	2.00	0.00
1,686.6	17.73	270.64	1,672.5	1.5	-136.1	136.1	2.00	2.00	0.00
1,720.0	17.73	270.64	1,704.3	1.6	-146.3	146.3	0.00	0.00	0.00
1,760.0	17.73	270.64	1,742.4	1.8	-158.4	158.5	0.00	0.00	0.00
1,800.0	17.73	270.64	1,780.5	1.9	-170.6	170.6	0.00	0.00	0.00
1,840.0	17.73	270.64	1,818.6	2.0	-182.8	182.8	0.00	0.00	0.00
1,880.0	17.73	270.64	1,856.7	2.2	-195.0	195.0	0.00	0.00	0.00
1,920.0	17.73	270.64	1,894.8	2.3	-207.2	207.2	0.00	0.00	0.00
1,960.0	17.73	270.64	1,932.9	2.4	-219.4	219.4	0.00	0.00	0.00
2,000.0	17.73	270.64	1,971.0	2.6	-231.5	231.6	0.00	0.00	0.00

Database:	Landmark	Local Co-ordinate Reference:	Well Wetco Farms G-4
Company:	BONANZA CREEK ENERGY OPERATING	TVD Reference:	WELL @ 4579.0ft (Original Well Elev)
Project:	SEC.4-T4N-R63W	MD Reference:	WELL @ 4579.0ft (Original Well Elev)
Site:	Wetco Farms G-4 Pad Sec.4-T4N-R63W	North Reference:	True
Well:	Wetco Farms G-4	Survey Calculation Method:	Minimum Curvature
Wellbore:	Wellbore #1		
Design:	Plan #1 (1-28-11)		

Planned Survey									
Measured Depth (ft)	Inclination (°)	Azimuth (°)	Vertical Depth (ft)	+N/-S (ft)	+E/-W (ft)	Vertical Section (ft)	Dogleg Rate (°/100ft)	Build Rate (°/100ft)	Turn Rate (°/100ft)
2,040.0	17.73	270.64	2,009.1	2.7	-243.7	243.7	0.00	0.00	0.00
2,080.0	17.73	270.64	2,047.2	2.8	-255.9	255.9	0.00	0.00	0.00
2,120.0	17.73	270.64	2,085.3	3.0	-268.1	268.1	0.00	0.00	0.00
2,160.0	17.73	270.64	2,123.4	3.1	-280.3	280.3	0.00	0.00	0.00
2,200.0	17.73	270.64	2,161.5	3.3	-292.4	292.5	0.00	0.00	0.00
2,240.0	17.73	270.64	2,199.6	3.4	-304.6	304.6	0.00	0.00	0.00
2,280.0	17.73	270.64	2,237.7	3.5	-316.8	316.8	0.00	0.00	0.00
2,320.0	17.73	270.64	2,275.8	3.7	-329.0	329.0	0.00	0.00	0.00
2,360.0	17.73	270.64	2,313.9	3.8	-341.2	341.2	0.00	0.00	0.00
2,400.0	17.73	270.64	2,352.0	3.9	-353.4	353.4	0.00	0.00	0.00
2,440.0	17.73	270.64	2,390.1	4.1	-365.5	365.6	0.00	0.00	0.00
2,480.0	17.73	270.64	2,428.2	4.2	-377.7	377.7	0.00	0.00	0.00
2,520.0	17.73	270.64	2,466.3	4.3	-389.9	389.9	0.00	0.00	0.00
2,560.0	17.73	270.64	2,504.4	4.5	-402.1	402.1	0.00	0.00	0.00
2,600.0	17.73	270.64	2,542.5	4.6	-414.3	414.3	0.00	0.00	0.00
2,640.0	17.73	270.64	2,580.6	4.7	-426.4	426.5	0.00	0.00	0.00
2,680.0	17.73	270.64	2,618.7	4.9	-438.6	438.7	0.00	0.00	0.00
2,720.0	17.73	270.64	2,656.8	5.0	-450.8	450.8	0.00	0.00	0.00
2,760.0	17.73	270.64	2,694.9	5.2	-463.0	463.0	0.00	0.00	0.00
2,800.0	17.73	270.64	2,733.0	5.3	-475.2	475.2	0.00	0.00	0.00
2,840.0	17.73	270.64	2,771.1	5.4	-487.4	487.4	0.00	0.00	0.00
2,880.0	17.73	270.64	2,809.2	5.6	-499.5	499.6	0.00	0.00	0.00
2,920.0	17.73	270.64	2,847.3	5.7	-511.7	511.7	0.00	0.00	0.00
2,960.0	17.73	270.64	2,885.4	5.8	-523.9	523.9	0.00	0.00	0.00
3,000.0	17.73	270.64	2,923.5	6.0	-536.1	536.1	0.00	0.00	0.00
3,040.0	17.73	270.64	2,961.6	6.1	-548.3	548.3	0.00	0.00	0.00
3,080.0	17.73	270.64	2,999.7	6.2	-560.4	560.5	0.00	0.00	0.00
3,120.0	17.73	270.64	3,037.8	6.4	-572.6	572.7	0.00	0.00	0.00
3,160.0	17.73	270.64	3,075.9	6.5	-584.8	584.8	0.00	0.00	0.00
3,200.0	17.73	270.64	3,114.0	6.6	-597.0	597.0	0.00	0.00	0.00
3,240.0	17.73	270.64	3,152.1	6.8	-609.2	609.2	0.00	0.00	0.00
3,280.0	17.73	270.64	3,190.2	6.9	-621.4	621.4	0.00	0.00	0.00
3,320.0	17.73	270.64	3,228.3	7.1	-633.5	633.6	0.00	0.00	0.00
3,360.0	17.73	270.64	3,266.4	7.2	-645.7	645.8	0.00	0.00	0.00
3,400.0	17.73	270.64	3,304.5	7.3	-657.9	657.9	0.00	0.00	0.00
3,440.0	17.73	270.64	3,342.6	7.5	-670.1	670.1	0.00	0.00	0.00
3,480.0	17.73	270.64	3,380.7	7.6	-682.3	682.3	0.00	0.00	0.00
3,520.0	17.73	270.64	3,418.8	7.7	-694.4	694.5	0.00	0.00	0.00
3,560.0	17.73	270.64	3,456.9	7.9	-706.6	706.7	0.00	0.00	0.00
3,600.0	17.73	270.64	3,495.0	8.0	-718.8	718.8	0.00	0.00	0.00
3,640.0	17.73	270.64	3,533.1	8.1	-731.0	731.0	0.00	0.00	0.00
3,680.0	17.73	270.64	3,571.2	8.3	-743.2	743.2	0.00	0.00	0.00
3,720.0	17.73	270.64	3,609.3	8.4	-755.3	755.4	0.00	0.00	0.00
3,760.0	17.73	270.64	3,647.4	8.5	-767.5	767.6	0.00	0.00	0.00
3,800.0	17.73	270.64	3,685.5	8.7	-779.7	779.8	0.00	0.00	0.00
3,840.0	17.73	270.64	3,723.6	8.8	-791.9	791.9	0.00	0.00	0.00
3,880.0	17.73	270.64	3,761.7	9.0	-804.1	804.1	0.00	0.00	0.00
3,920.0	17.73	270.64	3,799.8	9.1	-816.3	816.3	0.00	0.00	0.00
3,960.0	17.73	270.64	3,837.9	9.2	-828.4	828.5	0.00	0.00	0.00
4,000.0	17.73	270.64	3,876.0	9.4	-840.6	840.7	0.00	0.00	0.00
4,040.0	17.73	270.64	3,914.1	9.5	-852.8	852.9	0.00	0.00	0.00
4,080.0	17.73	270.64	3,952.2	9.6	-865.0	865.0	0.00	0.00	0.00
4,120.0	17.73	270.64	3,990.3	9.8	-877.2	877.2	0.00	0.00	0.00
4,160.0	17.73	270.64	4,028.4	9.9	-889.3	889.4	0.00	0.00	0.00

Database:	Landmark	Local Co-ordinate Reference:	Well Wetco Farms G-4
Company:	BONANZA CREEK ENERGY OPERATING	TVD Reference:	WELL @ 4579.0ft (Original Well Elev)
Project:	SEC.4-T4N-R63W	MD Reference:	WELL @ 4579.0ft (Original Well Elev)
Site:	Wetco Farms G-4 Pad Sec.4-T4N-R63W	North Reference:	True
Well:	Wetco Farms G-4	Survey Calculation Method:	Minimum Curvature
Wellbore:	Wellbore #1		
Design:	Plan #1 (1-28-11)		

Planned Survey									
Measured Depth (ft)	Inclination (°)	Azimuth (°)	Vertical Depth (ft)	+N/-S (ft)	+E/-W (ft)	Vertical Section (ft)	Dogleg Rate (°/100ft)	Build Rate (°/100ft)	Turn Rate (°/100ft)
4,200.0	17.73	270.64	4,066.5	10.0	-901.5	901.6	0.00	0.00	0.00
4,240.0	17.73	270.64	4,104.6	10.2	-913.7	913.8	0.00	0.00	0.00
4,280.0	17.73	270.64	4,142.7	10.3	-925.9	925.9	0.00	0.00	0.00
4,320.0	17.73	270.64	4,180.8	10.4	-938.1	938.1	0.00	0.00	0.00
4,360.0	17.73	270.64	4,218.9	10.6	-950.3	950.3	0.00	0.00	0.00
4,400.0	17.73	270.64	4,257.0	10.7	-962.4	962.5	0.00	0.00	0.00
4,440.0	17.73	270.64	4,295.1	10.8	-974.6	974.7	0.00	0.00	0.00
4,480.0	17.73	270.64	4,333.2	11.0	-986.8	986.9	0.00	0.00	0.00
4,520.0	17.73	270.64	4,371.3	11.1	-999.0	999.0	0.00	0.00	0.00
4,560.0	17.73	270.64	4,409.4	11.3	-1,011.2	1,011.2	0.00	0.00	0.00
4,600.0	17.73	270.64	4,447.5	11.4	-1,023.3	1,023.4	0.00	0.00	0.00
4,640.0	17.73	270.64	4,485.6	11.5	-1,035.5	1,035.6	0.00	0.00	0.00
4,680.0	17.73	270.64	4,523.7	11.7	-1,047.7	1,047.8	0.00	0.00	0.00
4,720.0	17.73	270.64	4,561.8	11.8	-1,059.9	1,060.0	0.00	0.00	0.00
4,760.0	17.73	270.64	4,599.9	11.9	-1,072.1	1,072.1	0.00	0.00	0.00
4,800.0	17.73	270.64	4,638.0	12.1	-1,084.3	1,084.3	0.00	0.00	0.00
4,840.0	17.73	270.64	4,676.1	12.2	-1,096.4	1,096.5	0.00	0.00	0.00
4,880.0	17.73	270.64	4,714.2	12.3	-1,108.6	1,108.7	0.00	0.00	0.00
4,920.0	17.73	270.64	4,752.3	12.5	-1,120.8	1,120.9	0.00	0.00	0.00
4,960.0	17.73	270.64	4,790.4	12.6	-1,133.0	1,133.1	0.00	0.00	0.00
5,000.0	17.73	270.64	4,828.5	12.7	-1,145.2	1,145.2	0.00	0.00	0.00
5,040.0	17.73	270.64	4,866.6	12.9	-1,157.3	1,157.4	0.00	0.00	0.00
5,080.0	17.73	270.64	4,904.7	13.0	-1,169.5	1,169.6	0.00	0.00	0.00
5,103.9	17.73	270.64	4,927.5	13.1	-1,176.8	1,176.9	0.00	0.00	0.00
5,120.0	17.41	270.64	4,942.8	13.2	-1,181.7	1,181.7	2.00	-2.00	0.00
5,160.0	16.61	270.64	4,981.1	13.3	-1,193.4	1,193.4	2.00	-2.00	0.00
5,200.0	15.81	270.64	5,019.5	13.4	-1,204.5	1,204.6	2.00	-2.00	0.00
5,240.0	15.01	270.64	5,058.0	13.5	-1,215.2	1,215.2	2.00	-2.00	0.00
5,280.0	14.21	270.64	5,096.7	13.6	-1,225.2	1,225.3	2.00	-2.00	0.00
5,320.0	13.41	270.64	5,135.6	13.7	-1,234.8	1,234.9	2.00	-2.00	0.00
5,360.0	12.61	270.64	5,174.6	13.8	-1,243.8	1,243.9	2.00	-2.00	0.00
5,400.0	11.81	270.64	5,213.7	13.9	-1,252.3	1,252.3	2.00	-2.00	0.00
5,440.0	11.01	270.64	5,252.9	14.0	-1,260.2	1,260.3	2.00	-2.00	0.00
5,480.0	10.21	270.64	5,292.2	14.1	-1,267.5	1,267.6	2.00	-2.00	0.00
5,520.0	9.41	270.64	5,331.6	14.2	-1,274.4	1,274.4	2.00	-2.00	0.00
5,560.0	8.61	270.64	5,371.1	14.3	-1,280.6	1,280.7	2.00	-2.00	0.00
5,600.0	7.81	270.64	5,410.7	14.3	-1,286.3	1,286.4	2.00	-2.00	0.00
5,640.0	7.01	270.64	5,450.4	14.4	-1,291.5	1,291.6	2.00	-2.00	0.00
5,680.0	6.21	270.64	5,490.1	14.4	-1,296.1	1,296.2	2.00	-2.00	0.00
5,720.0	5.41	270.64	5,529.9	14.5	-1,300.1	1,300.2	2.00	-2.00	0.00
5,760.0	4.61	270.64	5,569.7	14.5	-1,303.6	1,303.7	2.00	-2.00	0.00
5,800.0	3.81	270.64	5,609.6	14.5	-1,306.6	1,306.7	2.00	-2.00	0.00
5,840.0	3.01	270.64	5,649.6	14.6	-1,309.0	1,309.0	2.00	-2.00	0.00
5,880.0	2.21	270.64	5,689.5	14.6	-1,310.8	1,310.9	2.00	-2.00	0.00
5,920.0	1.41	270.64	5,729.5	14.6	-1,312.0	1,312.1	2.00	-2.00	0.00
5,960.0	0.61	270.64	5,769.5	14.6	-1,312.7	1,312.8	2.00	-2.00	0.00
5,990.5	0.00	0.00	5,800.0	14.6	-1,312.9	1,313.0	2.00	-2.00	0.00
TARGET BHL 1320'FNL, 1320'FWL									
6,000.0	0.00	0.00	5,809.5	14.6	-1,312.9	1,313.0	0.00	0.00	0.00
6,040.0	0.00	0.00	5,849.5	14.6	-1,312.9	1,313.0	0.00	0.00	0.00
6,080.0	0.00	0.00	5,889.5	14.6	-1,312.9	1,313.0	0.00	0.00	0.00
6,120.0	0.00	0.00	5,929.5	14.6	-1,312.9	1,313.0	0.00	0.00	0.00
6,160.0	0.00	0.00	5,969.5	14.6	-1,312.9	1,313.0	0.00	0.00	0.00
6,200.0	0.00	0.00	6,009.5	14.6	-1,312.9	1,313.0	0.00	0.00	0.00

Database:	Landmark	Local Co-ordinate Reference:	Well Wetco Farms G-4
Company:	BONANZA CREEK ENERGY OPERATING	TVD Reference:	WELL @ 4579.0ft (Original Well Elev)
Project:	SEC.4-T4N-R63W	MD Reference:	WELL @ 4579.0ft (Original Well Elev)
Site:	Wetco Farms G-4 Pad Sec.4-T4N-R63W	North Reference:	True
Well:	Wetco Farms G-4	Survey Calculation Method:	Minimum Curvature
Wellbore:	Wellbore #1		
Design:	Plan #1 (1-28-11)		

Planned Survey									
Measured Depth (ft)	Inclination (°)	Azimuth (°)	Vertical Depth (ft)	+N/-S (ft)	+E/-W (ft)	Vertical Section (ft)	Dogleg Rate (°/100ft)	Build Rate (°/100ft)	Turn Rate (°/100ft)
6,240.0	0.00	0.00	6,049.5	14.6	-1,312.9	1,313.0	0.00	0.00	0.00
6,280.0	0.00	0.00	6,089.5	14.6	-1,312.9	1,313.0	0.00	0.00	0.00
6,320.0	0.00	0.00	6,129.5	14.6	-1,312.9	1,313.0	0.00	0.00	0.00
6,360.0	0.00	0.00	6,169.5	14.6	-1,312.9	1,313.0	0.00	0.00	0.00
6,400.0	0.00	0.00	6,209.5	14.6	-1,312.9	1,313.0	0.00	0.00	0.00
6,421.5	0.00	0.00	6,231.0	14.6	-1,312.9	1,313.0	0.00	0.00	0.00
NIOBRARA - LEGAL BOX 800' X 800' 1366'FNL & 1323'FWL									
6,440.0	0.00	0.00	6,249.5	14.6	-1,312.9	1,313.0	0.00	0.00	0.00
6,480.0	0.00	0.00	6,289.5	14.6	-1,312.9	1,313.0	0.00	0.00	0.00
6,520.0	0.00	0.00	6,329.5	14.6	-1,312.9	1,313.0	0.00	0.00	0.00
6,560.0	0.00	0.00	6,369.5	14.6	-1,312.9	1,313.0	0.00	0.00	0.00
6,600.0	0.00	0.00	6,409.5	14.6	-1,312.9	1,313.0	0.00	0.00	0.00
6,640.0	0.00	0.00	6,449.5	14.6	-1,312.9	1,313.0	0.00	0.00	0.00
6,680.0	0.00	0.00	6,489.5	14.6	-1,312.9	1,313.0	0.00	0.00	0.00
6,720.0	0.00	0.00	6,529.5	14.6	-1,312.9	1,313.0	0.00	0.00	0.00
6,760.0	0.00	0.00	6,569.5	14.6	-1,312.9	1,313.0	0.00	0.00	0.00
6,800.0	0.00	0.00	6,609.5	14.6	-1,312.9	1,313.0	0.00	0.00	0.00
6,840.0	0.00	0.00	6,649.5	14.6	-1,312.9	1,313.0	0.00	0.00	0.00
6,880.0	0.00	0.00	6,689.5	14.6	-1,312.9	1,313.0	0.00	0.00	0.00
6,920.0	0.00	0.00	6,729.5	14.6	-1,312.9	1,313.0	0.00	0.00	0.00
6,960.0	0.00	0.00	6,769.5	14.6	-1,312.9	1,313.0	0.00	0.00	0.00
6,990.5	0.00	0.00	6,800.0	14.6	-1,312.9	1,313.0	0.00	0.00	0.00

Targets									
Target Name	Dip Angle (°)	Dip Dir. (°)	TVD (ft)	+N/-S (ft)	+E/-W (ft)	Northing (ft)	Easting (ft)	Latitude	Longitude
- hit/miss target									
- Shape									
TARGET BHL 1320'F	0.00	0.00	5,800.0	14.6	-1,312.9	1,370,308.54	3,293,331.90	40° 20' 42.432 N	104° 26' 51.396 W
- plan hits target center									
- Point									
LEGAL BOX 800' X 800'	0.00	0.00	6,231.0	-31.4	-1,309.9	1,370,262.57	3,293,335.45	40° 20' 41.977 N	104° 26' 51.357 W
- plan misses target center by 46.1ft at 6421.5ft MD (6231.0 TVD, 14.6 N, -1312.9 E)									
- Rectangle (sides W800.0 H800.0 D569.0)									

Casing Points					
Measured Depth (ft)	Vertical Depth (ft)	Name	Casing Diameter (")	Hole Diameter (")	
697.0	697.0	8 5/8"	8-5/8	12-1/4	

Formations					
Measured Depth (ft)	Vertical Depth (ft)	Name	Lithology	Dip (°)	Dip Direction (°)
6,421.5	6,231.0	NIOBRARA		0.00	