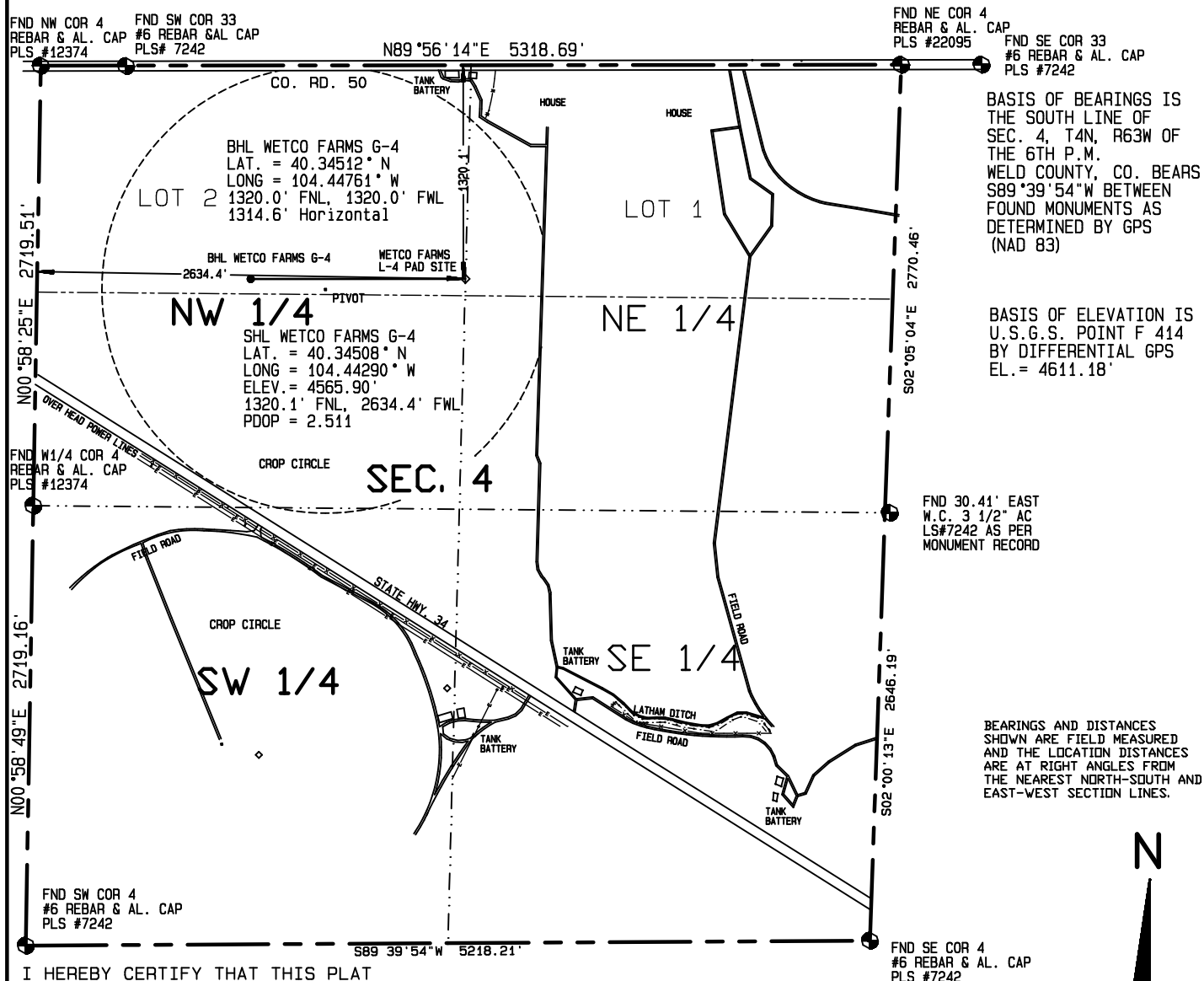


THERE ARE NO IMPROVEMENTS WITHIN 400' OF THE LOCATION. IT IS LOCATED INSIDE OF A CROP IRRIGATION CIRCLE.



I HEREBY CERTIFY THAT THIS PLAT IS AN ACCURATE REPRESENTATION OF A CORRECT SURVEY SHOWING THE LOCATION OF SAID WELLSITE:

Dan R. Griggs PLS# 38018

**CONTRACT SURVEYORS, LTD.**  
COMPLETE SURVEYING AND GLOBAL POSITIONING

2133 SOUTH BELLAIRE STREET #14  
DENVER COLORADO 80222  
(303) 756-3695



MULTI-WELL PLAN  
Page 2

CSL# 11104-01

DATE OF FIELD WORK:

21 JANUARY, 2011

DATE OF DRAWING:

24 JANUARY, 2011

WETCO FARMS G-4 DIRECTIONAL WELL

LOT 2, SEC. 4, T4N, R63W

BONANZA CREEK ENERGY OPERATING COMPANY, LLC

WELD COUNTY, COLORADO