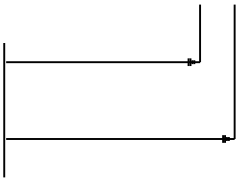
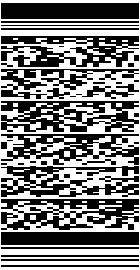


Company: ExxonMobil Oil Corporation		Well: PCU 296 6B2		Field: Piceance Creek		Country: Rio Blanco		State: Colorado		Country: USA	
PERFORM - Drilling Mechanics											
2 in / hr Time Based											
Real Time Log											
Company: ExxonMobil Oil Corporation											
Well: PCU 296 6B2											
Field: Piceance Creek											
County: Rio Blanco											
State: Colorado											
Country: USA											
Section: 6		Township: 2S		Range: 96W		APIN: 051031154500		Rig Name: H & P 215		Rig Type: Flex 3	
FL: NAD27 Colorado State Planes, Northern Zone, US Feet											
FL1: Latitude: N 39° 54' 19.069" Y: 219914.00 ft											
FL2: Longitude: W 108° 12' 15.805" X: 1241401.00 ft											
Log Measured From - Drill Floor: 7394.0 ft											
Ground Level: 7367.0 ft											
											
Permanent Datum - Mean Sea Level											
Acquisition Dates: 01 Feb 11 to 04 Feb 11				Other Services:							
Print Interval: 21/1/2011 6:54:11 AM to 21/4/2011 5:44:14 PM				Directional Drilling							
Index Types: Time											
Index Scales: 2" / 3600 secs											
Depth Source: Driller's Depth											
Depth Sensor: 3rd Party Depth											
Conveyance: Drill Pipe											
Print Type: Final											
Spud Date: 26-Jan-2011											

Disclaimer

THE USE OF AND RELIANCE UPON THIS RECORDED-DATA BY THE HEREIN NAMED COMPANY (AND ANY OF ITS AFFILIATES, PARTNERS, REPRESENTATIVES, AGENTS, CONSULTANTS AND EMPLOYEES) IS SUBJECT TO THE TERMS AND CONDITIONS AGREED UPON BETWEEN SCHLUMBERGER AND THE COMPANY, INCLUDING: (a) RESTRICTIONS ON USE OF THE RECORDED-DATA; (b) DISCLAIMERS AND WAIVERS OF WARRANTIES AND REPRESENTATIONS REGARDING COMPANY'S USE AND RELIANCE UPON THE RECORDED-DATA; AND (c) CUSTOMER'S FULL AND SOLE RESPONSIBILITY FOR ANY INFERENCE DRAWN OR DECISION MADE IN CONNECTION WITH THE USE OF THIS RECORDED-DATA.

Content	
1. Header	
2. Disclaimer	
3. Contents	
4. Run 2	
4.1 Integration Summary	
4.2 Software Version	
4.3 Composite Summary	
4.4 Log (PERFORM - Drilling Mechanics)	
4.5 Parameter Listing	
5. Tail	

Run 2

Integration Summary	
<p>Integration Summary</p> <p>The integration of the three models (Cognitive-Behavioral, Psychodynamic, and Humanistic) provides a comprehensive framework for understanding and treating mental health issues. This summary outlines the key components and their interrelationships.</p> <p>Key Components:</p> <ul style="list-style-type: none"> Cognitive-Behavioral Model: Focuses on the relationship between thoughts, feelings, and behaviors. It emphasizes the role of cognitive distortions and learned behaviors in mental health. Psychodynamic Model: Emphasizes the influence of unconscious processes and early childhood experiences on current behavior and mental health. Humanistic Model: Focuses on the individual's subjective experience, self-concept, and the need for personal growth and self-actualization. <p>Integration:</p> <ul style="list-style-type: none"> Biopsychosocial Approach: Combines biological, psychological, and social factors to provide a holistic view of mental health. Eclectic Approach: Integrates elements from different models to tailor treatment to the individual client. Transdiagnostic Approach: Focuses on common underlying mechanisms across different disorders to develop targeted interventions. <p>Applications:</p> <ul style="list-style-type: none"> Assessment: Utilizes a combination of clinical interviews, self-report measures, and behavioral observations to gather comprehensive information. Treatment: Develops individualized treatment plans that address cognitive, emotional, and behavioral aspects of the client's issues. Prevention: Implements strategies to identify and address risk factors early, promoting mental well-being and resilience. 	

Software Version	
------------------	--

Acquisition System	Version
--------------------	---------

Application Patch	SP-20100818-2.0.6803.1108
-------------------	---------------------------

Pass Summary	
--------------	--

Run Name	Pass Objective	Direction	Start	Stop	Acquisition Start Date	Acquisition Start Time
----------	----------------	-----------	-------	------	------------------------	------------------------

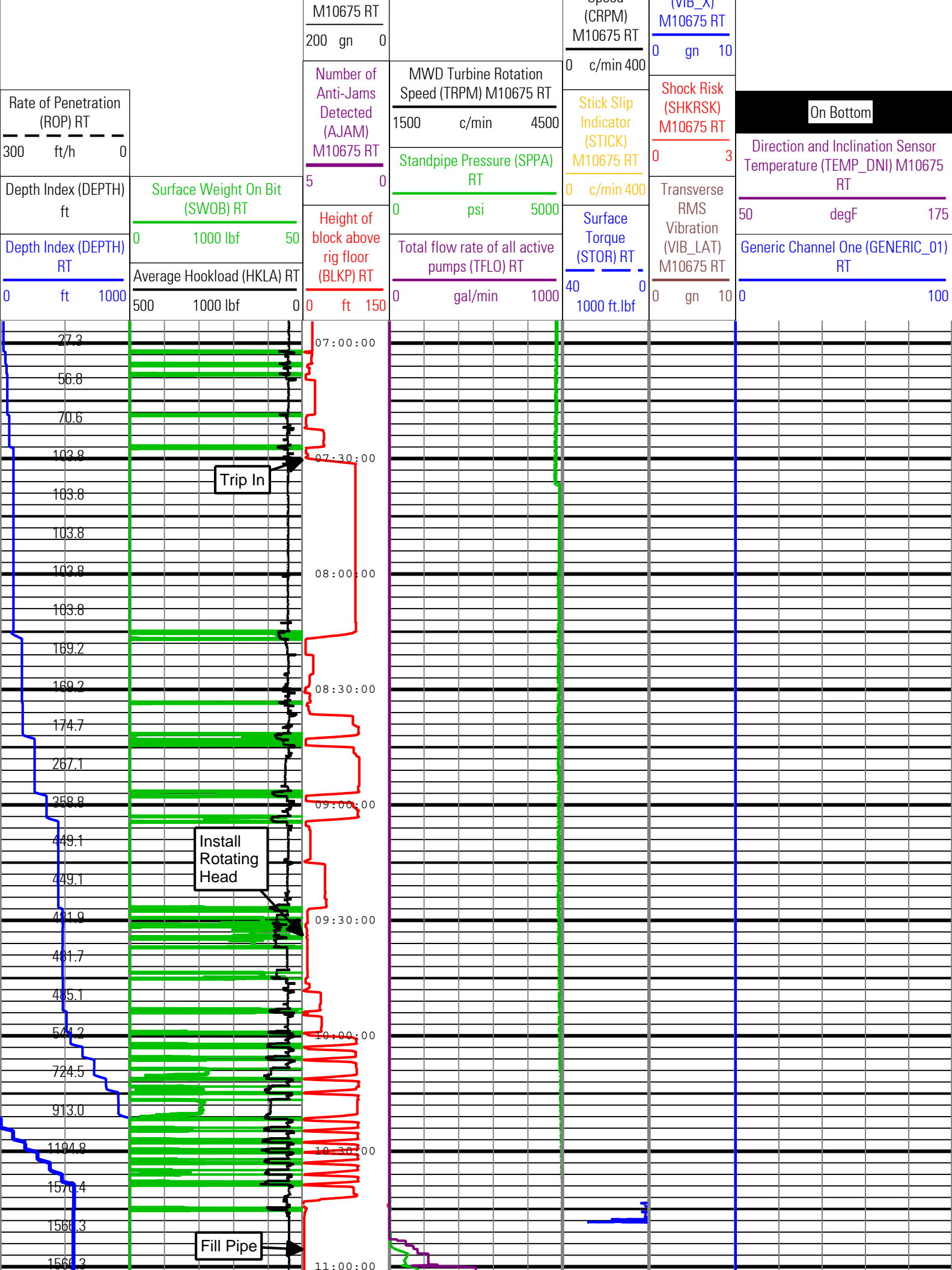
Log

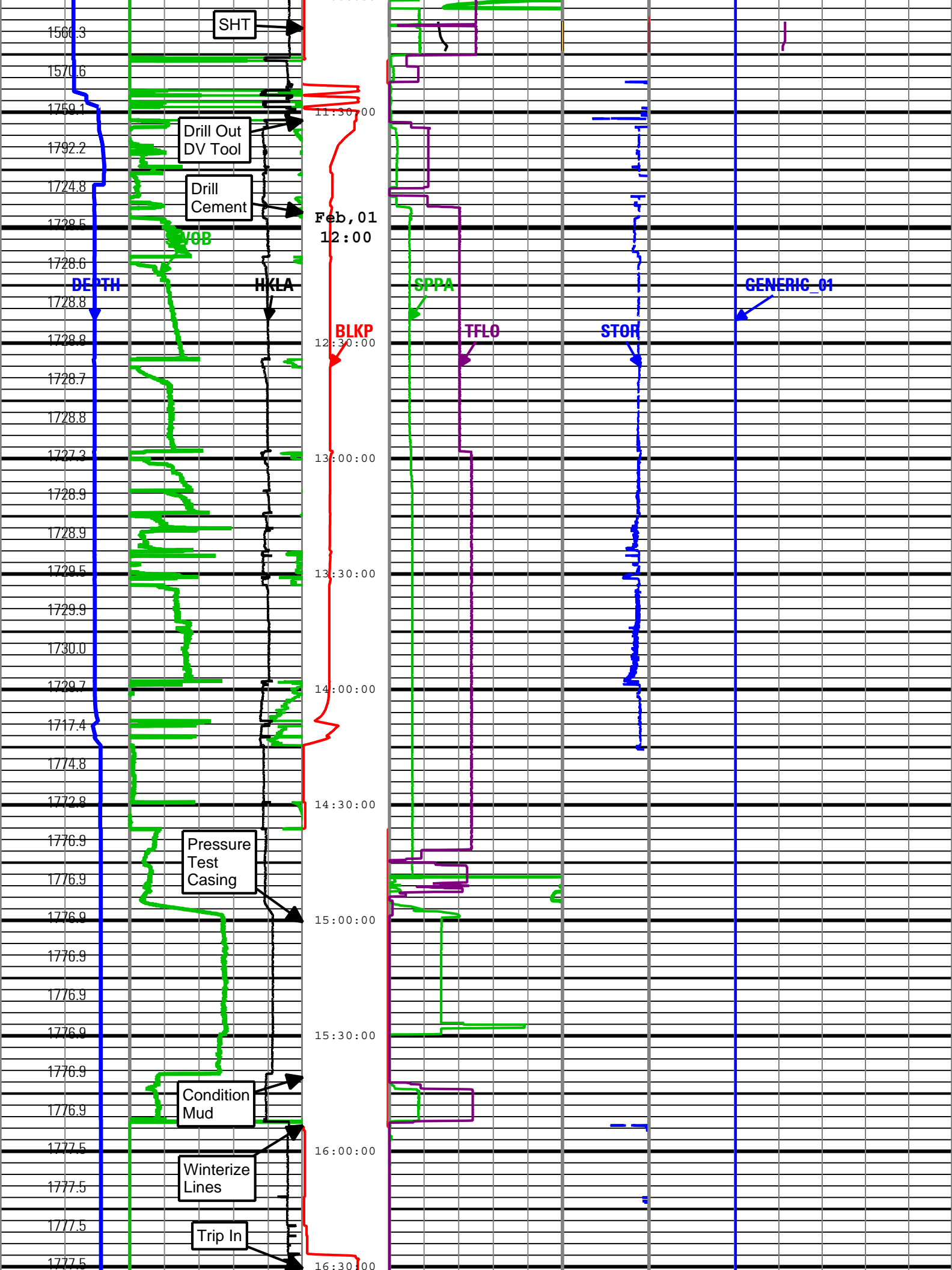
Run 2: TimeLogicalAcq FC5AB447-8C7A-4E21-B1F2-877BD6E0419F

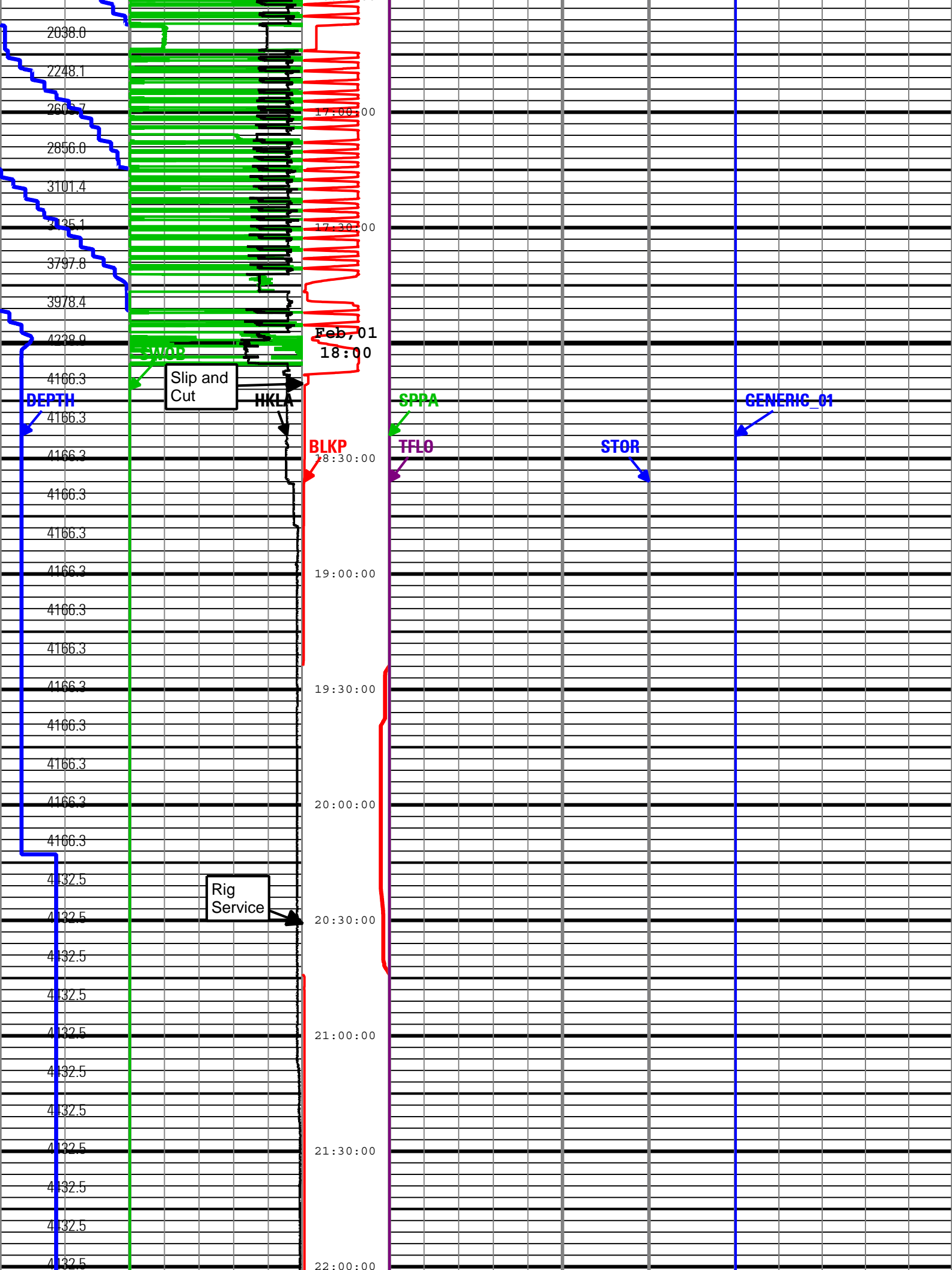
Run 2: TimeLogicalAcq FC5AB447-8C7A-4E21-B1F2-877BD6E0419F

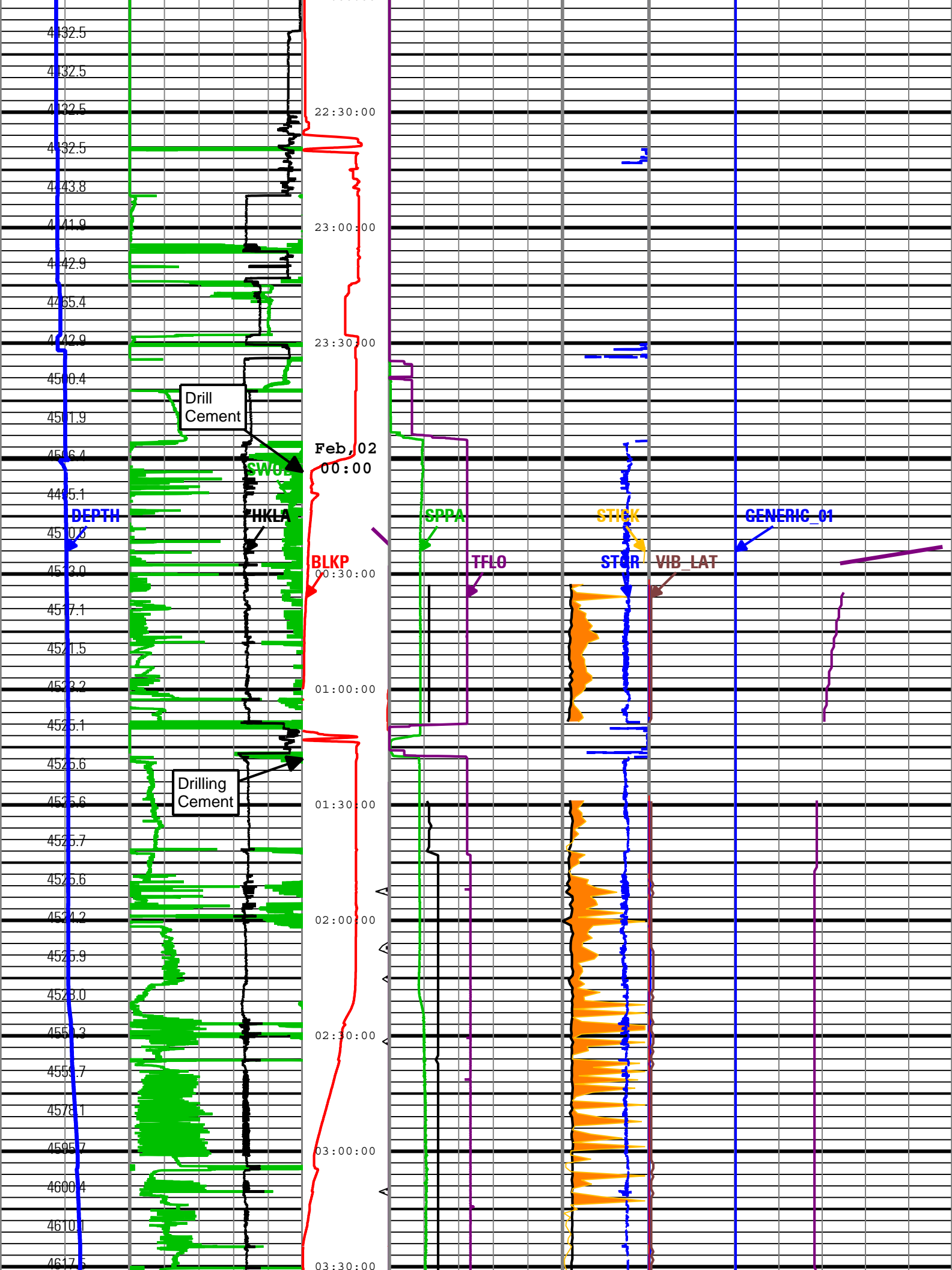
AJAM	M10675:M10675	ACQ - RT
BLKP	DRILLING_SURFACE	ACQ - RT
CRPM	M10675:M10675	ACQ - RT
DEPTH	DnMWorkflow	ACQ - RT
GENERIC_01	DRILLING_SURFACE	ACQ - RT
HKLA	DRILLING_SURFACE	ACQ - RT
OBTM	DnMWorkflow	ACQ
ROP	DRILLING_SURFACE	ACQ - RT
SHKPK	M10675:M10675	ACQ - RT
SHKRSK	M10675:M10675	ACQ - RT
SPPA	DRILLING_SURFACE	ACQ - RT
STICK	M10675:M10675	ACQ - RT
STOR	DRILLING_SURFACE	ACQ - RT
SWOB	DRILLING_SURFACE	ACQ - RT
TEMP_DNI	M10675:M10675	ACQ - RT
TFLO	DRILLING_SURFACE	ACQ - RT
TRPM	M10675:M10675	ACQ - RT
VIB_LAT	M10675:M10675	ACQ - RT
VIB_X	M10675:M10675	ACQ - RT

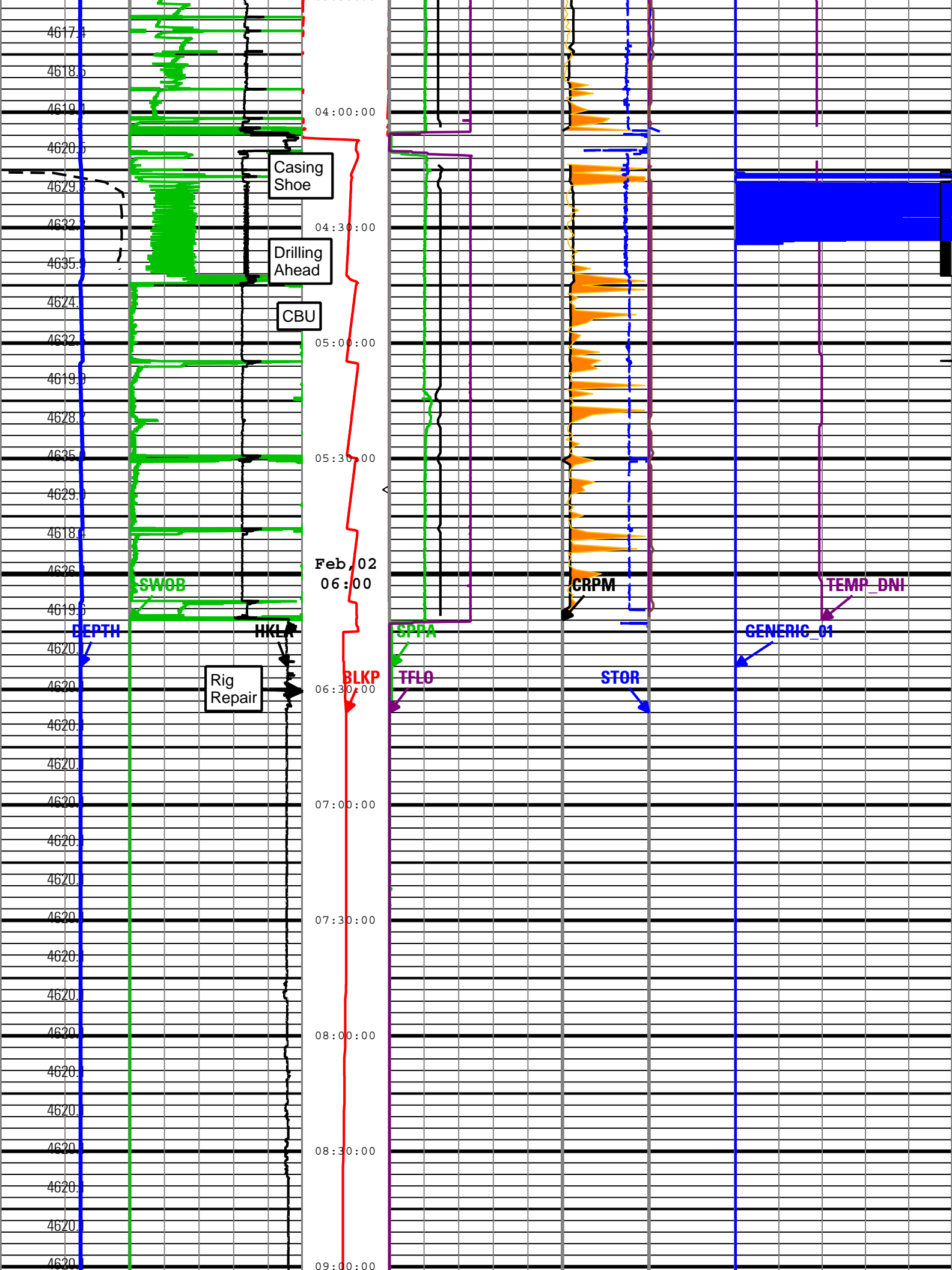
High StickSlip	Shock Risk
Collar Rotational Speed	RMS Vibration, X-Axis (M/D, Y)

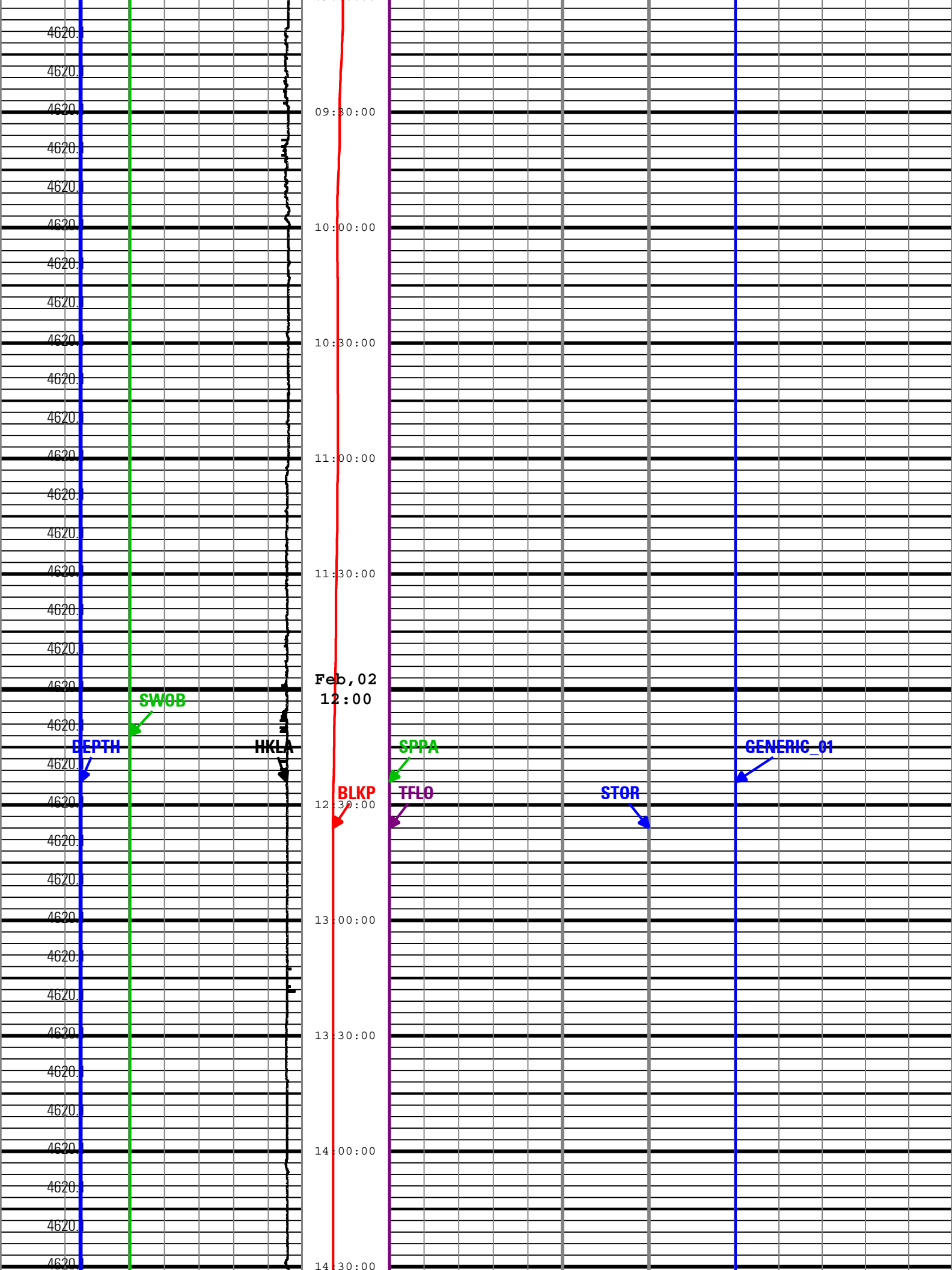


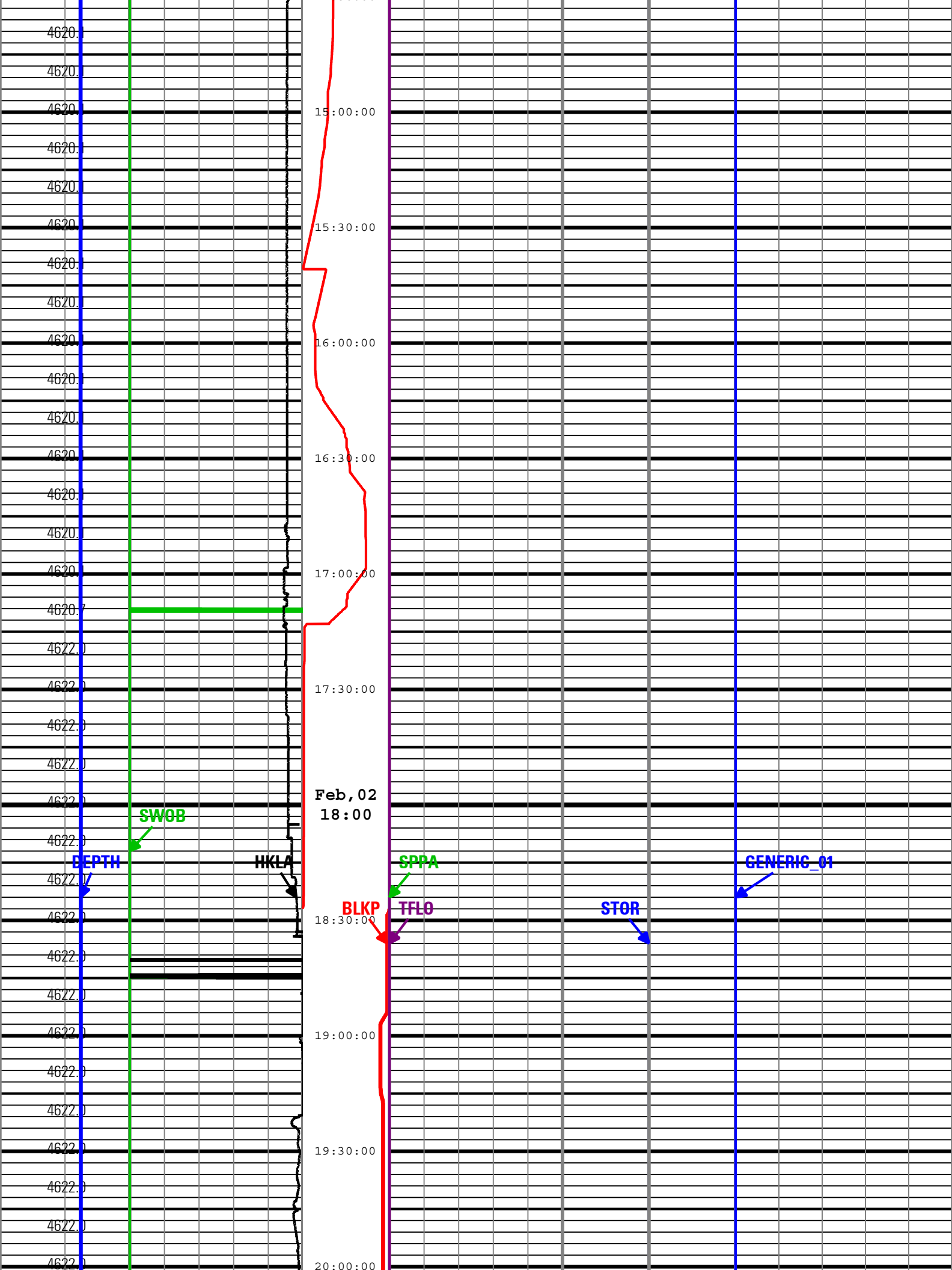


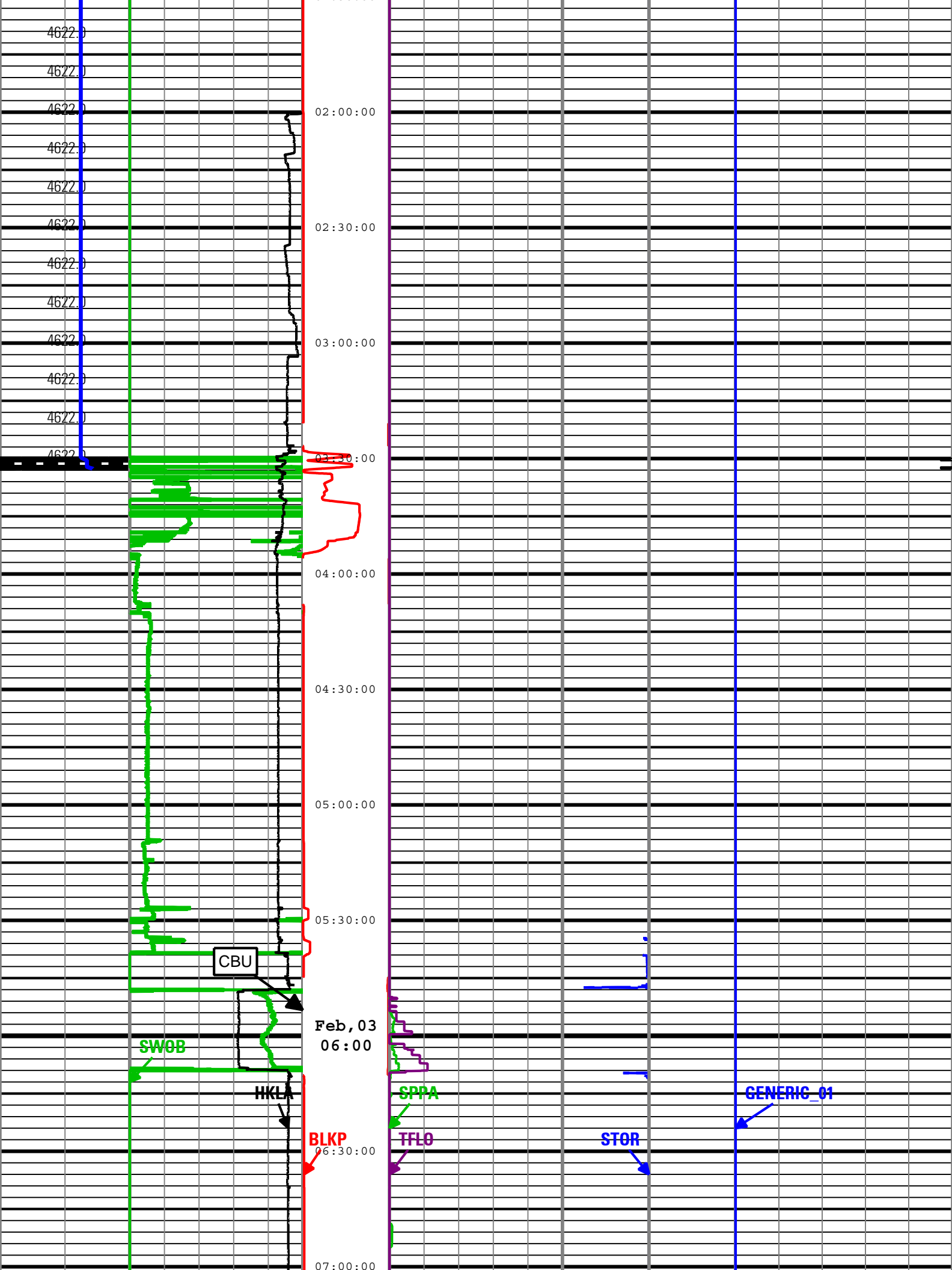


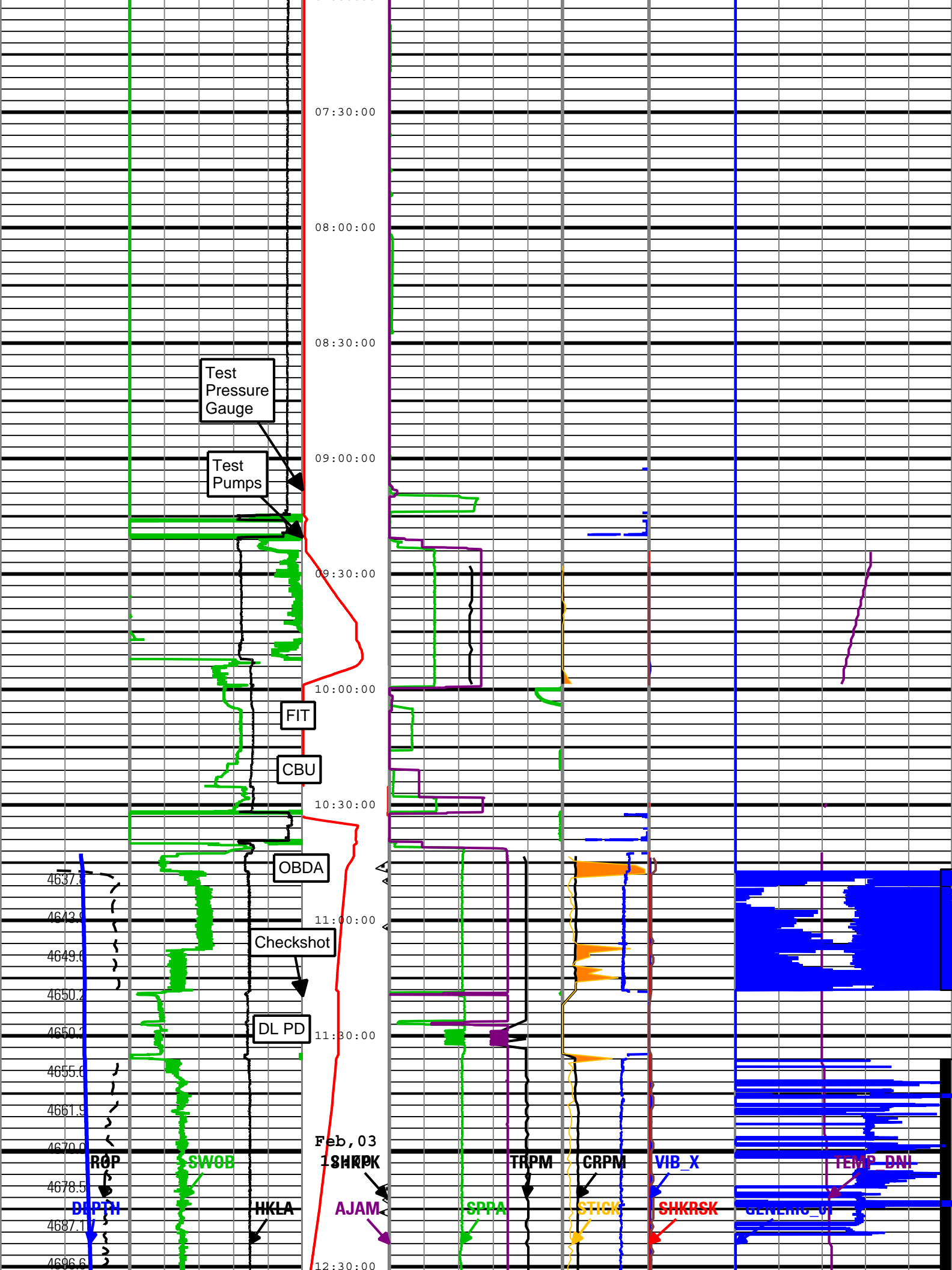


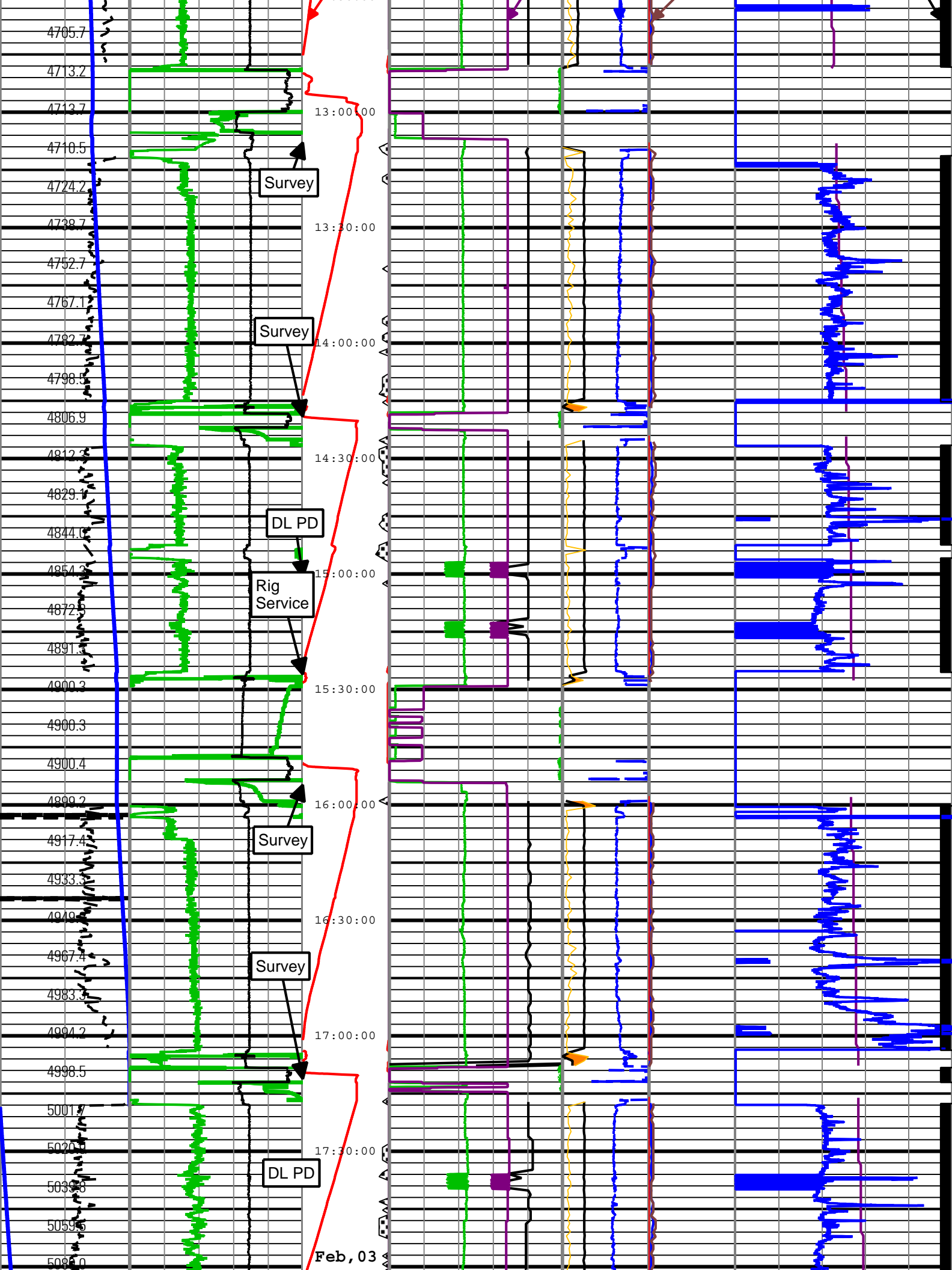


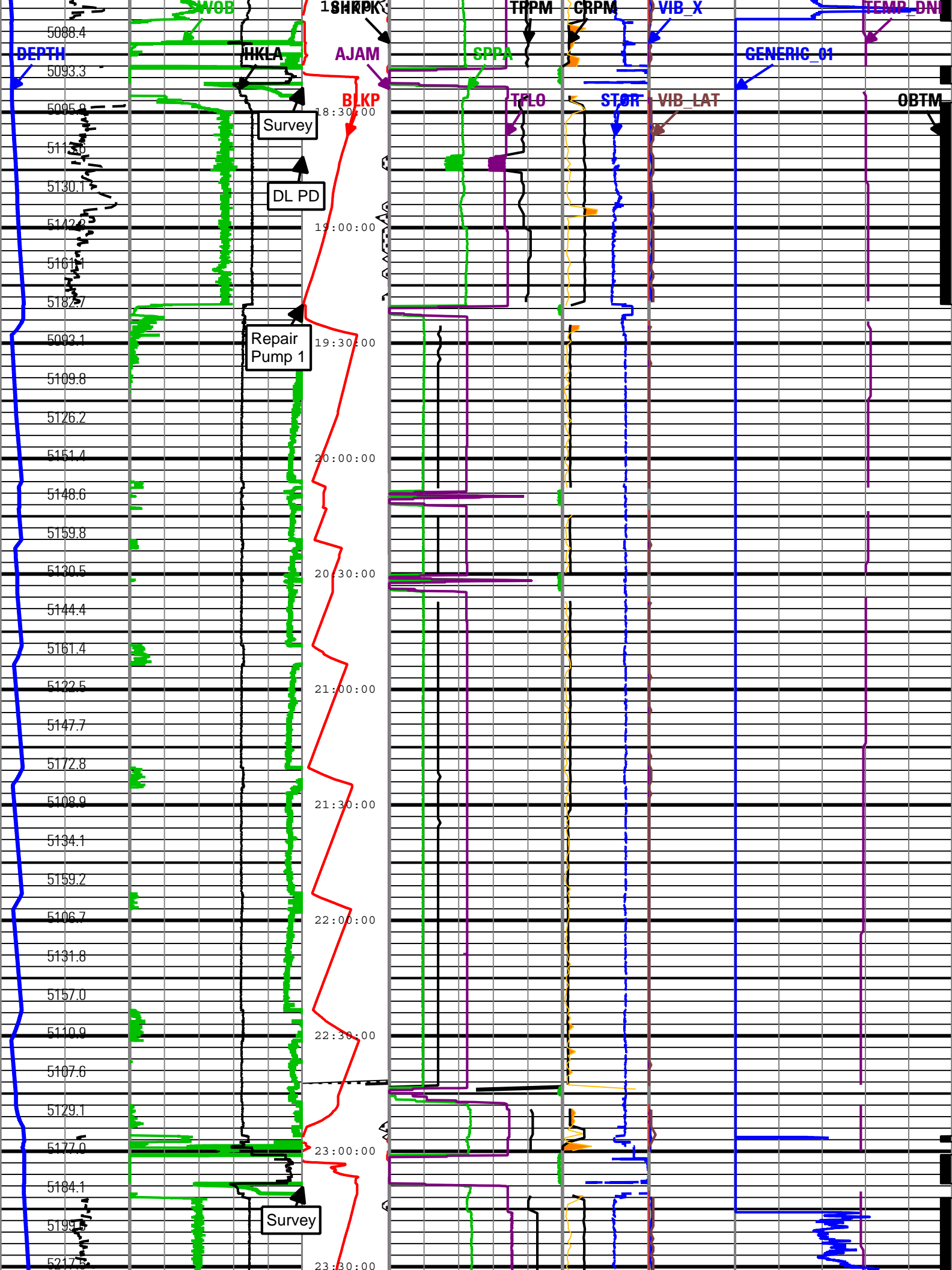


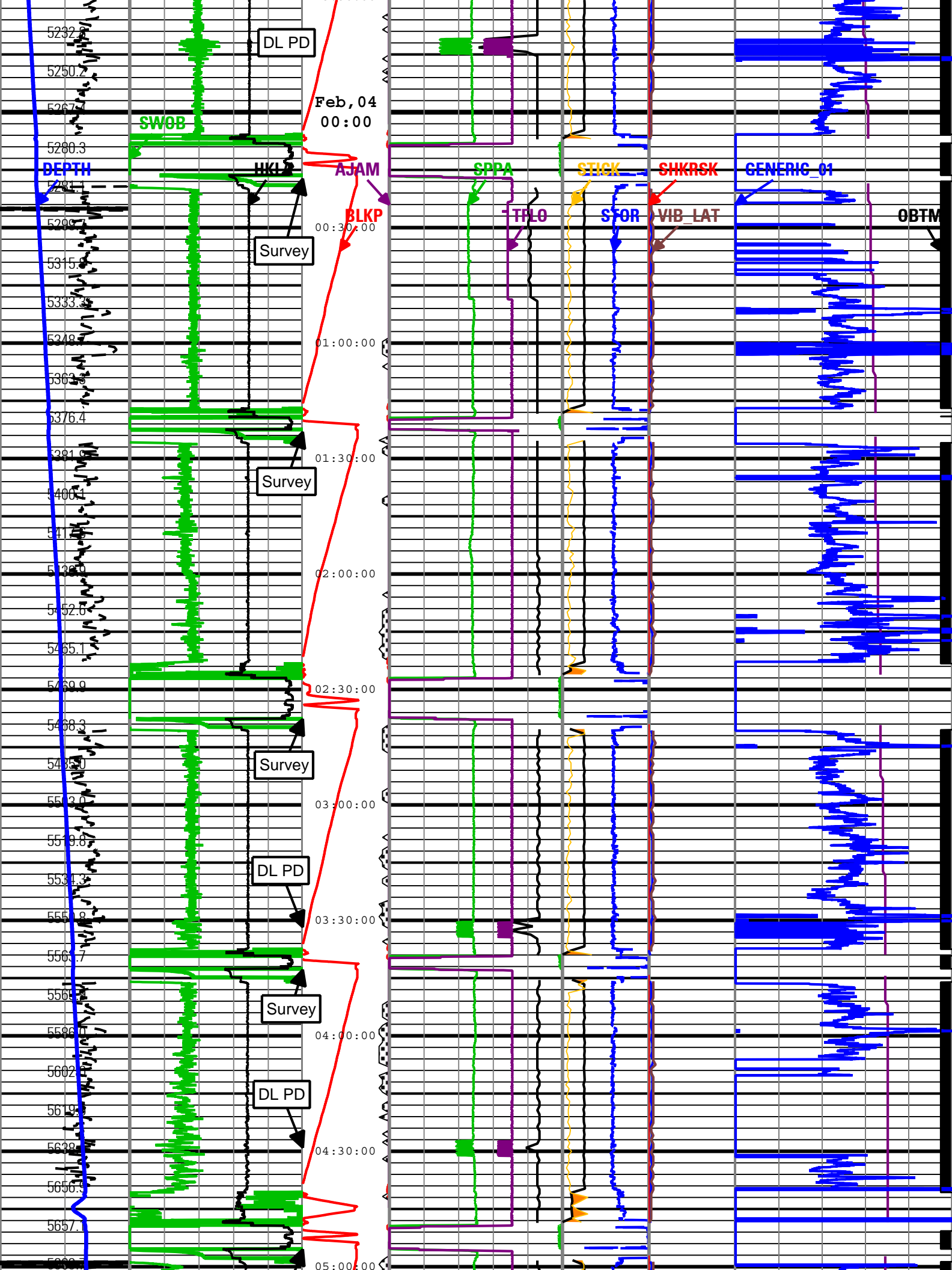


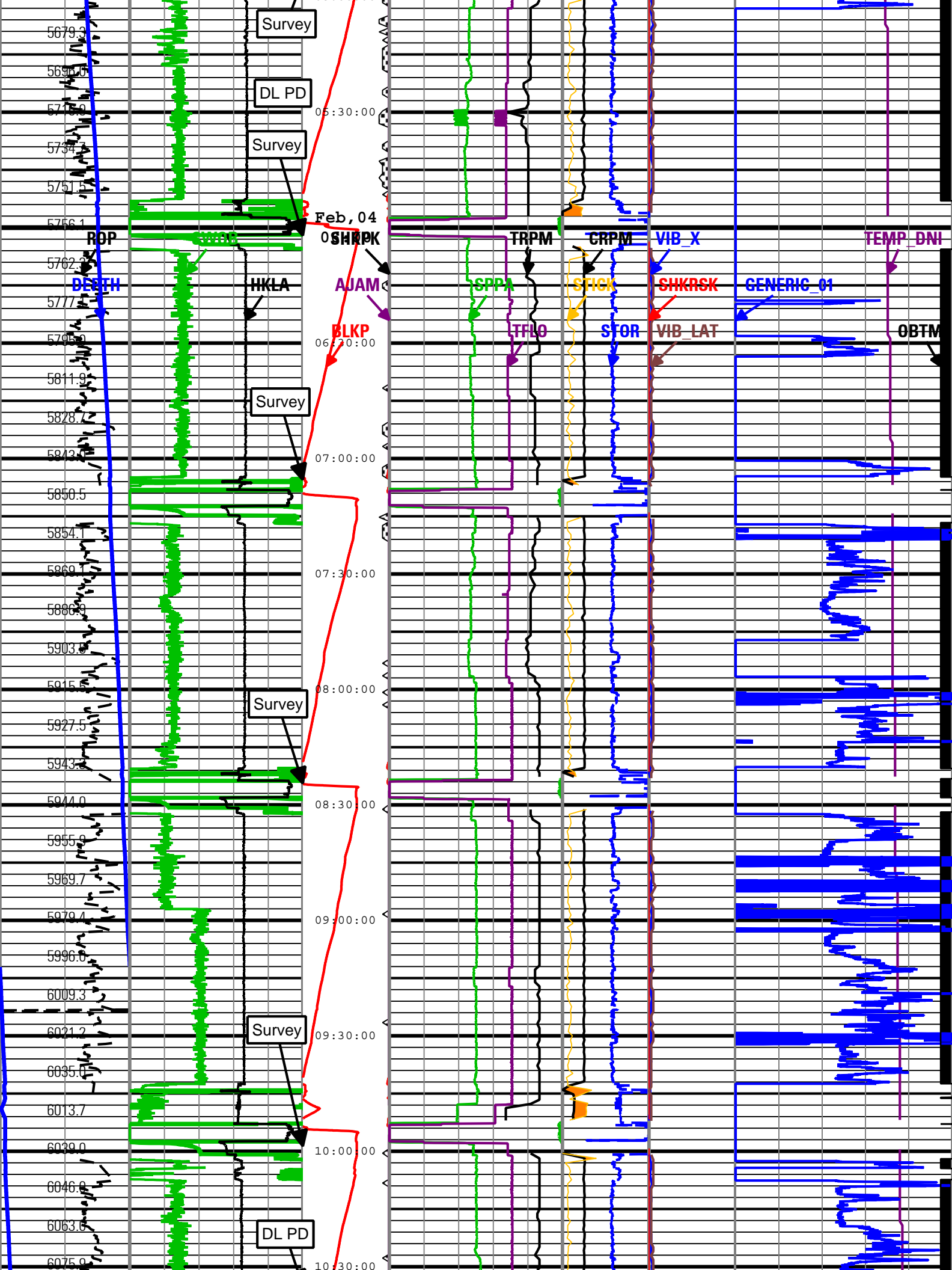


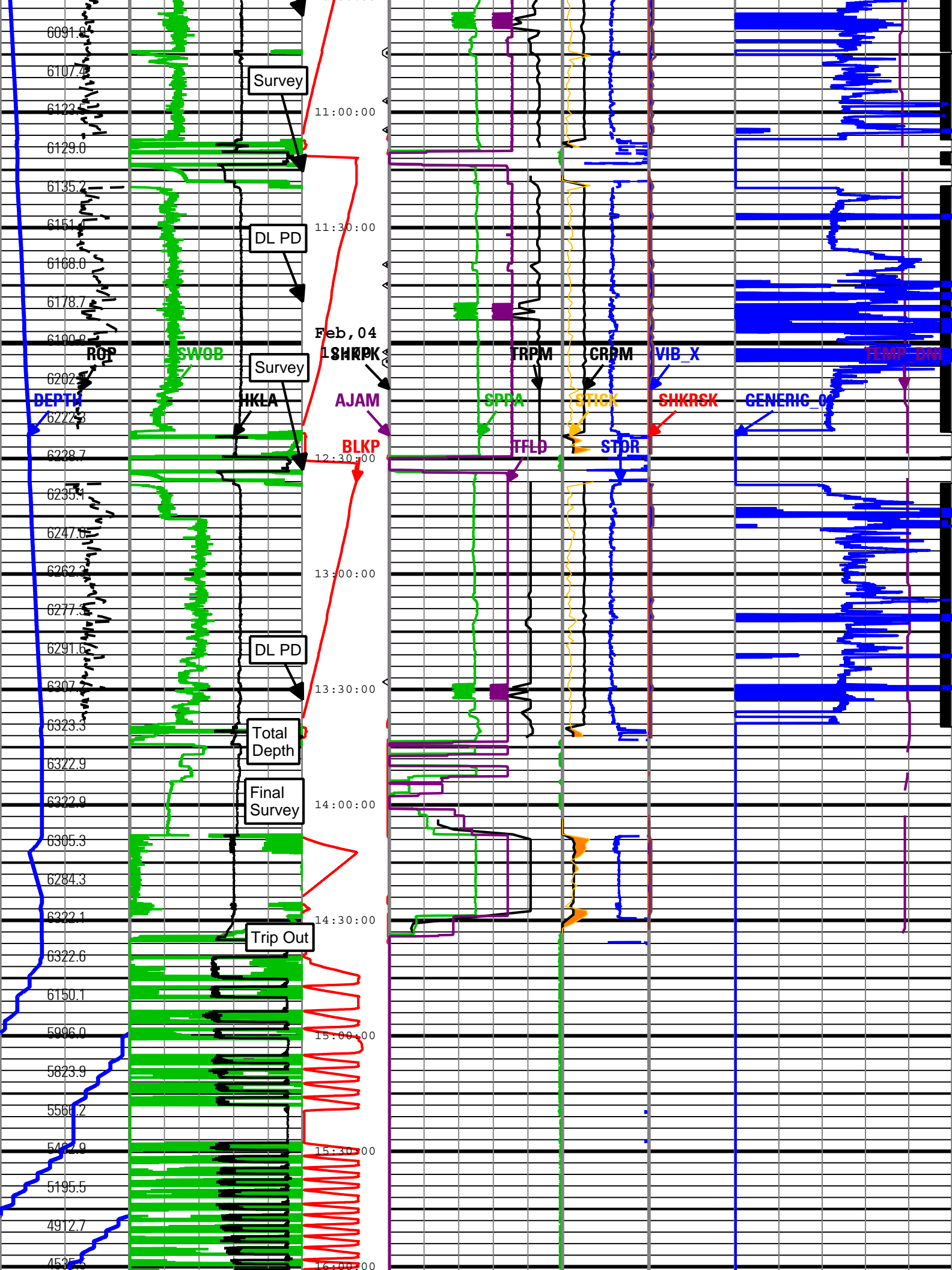


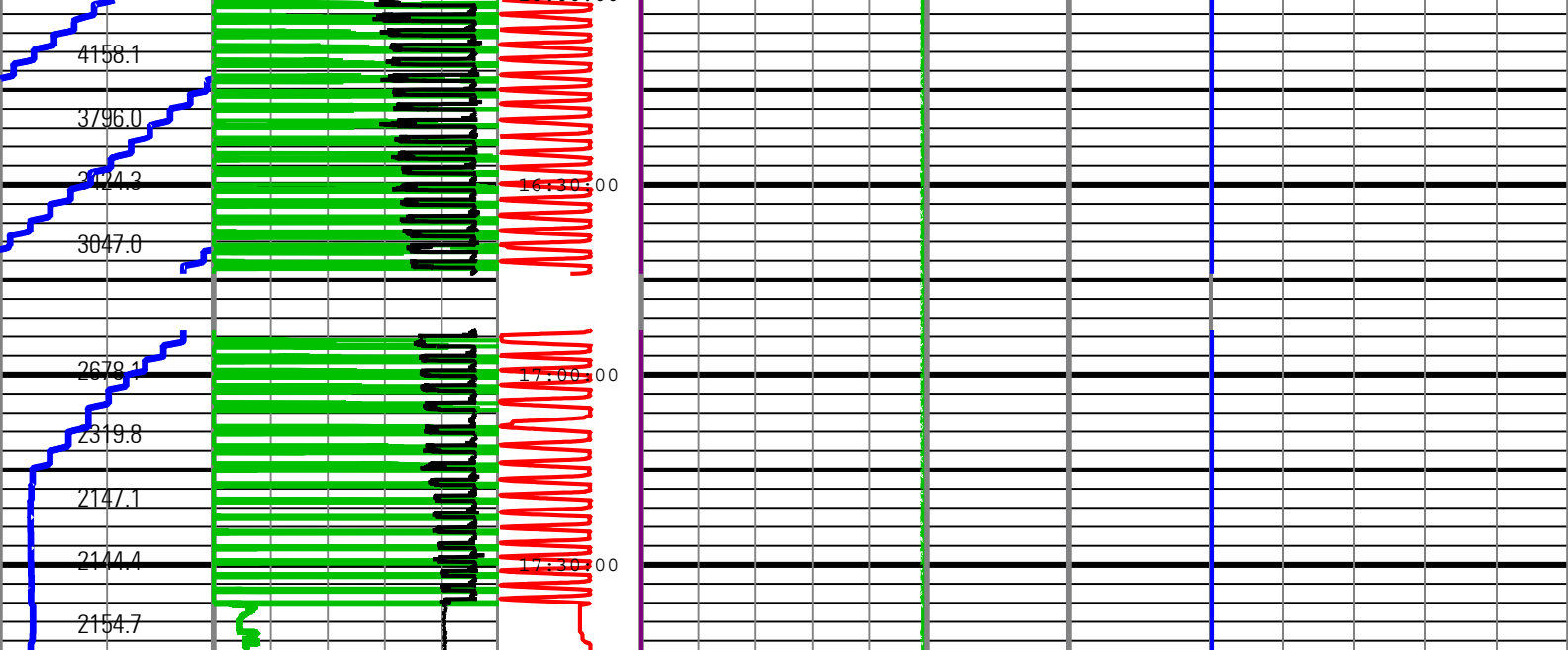












Rate of Penetration (ROP) RT 300 ft/h 0	Surface Weight On Bit (SWOB) RT 0 1000 lbf 50	Shock Peak (SHKPK) M10675 RT 200 gn 0	MWD Turbine Rotation Speed (TRPM) M10675 RT 1500 c/min 4500	High SticknSlip Collar Rotational Speed (CRPM) M10675 RT 0 c/min 400	Shock Risk (SHKRSK) M10675 RT 0 3	On Bottom Direction and Inclination Sensor Temperature (TEMP_DNI) M10675 RT 50 degF 175
Depth Index (DEPTH) ft	Average Hookload (HKLA) RT 500 1000 lbf 0	Number of Anti-Jams Detected (AJAM) M10675 RT 5 0	Standpipe Pressure (SPPA) RT 0 psi 5000	Stick Slip Indicator (STICK) M10675 RT 0 c/min 400	Transverse RMS Vibration (VIB_LAT) M10675 RT 0 gn 10	Generic Channel One (GENERIC_01) RT 0 100
Depth Index (DEPTH) RT 0 ft 1000		Height of block above rig floor (BLKP) RT 0 ft 150	Total flow rate of all active pumps (TFLO) RT 0 gal/min 1000	Surface Torque (STOR) RT 40 0 1000 ft.lbf		

Description: TeleScope Drilling Mechanics Time RT Format: Log (PERFORM - Drilling Mechanics) Index Scale: 2 in per 3600 s Index Type: Time Creation Date: 05-Feb-2011 09:22:26

Channel Processing Parameters				
Parameter	Description	ToolPath	Value	Unit
DEPTH_SEL	Depth Selection Parameter	DNMSESSION	Driller's Depth	
Tool Control Parameters				
Parameter	Description	ToolPath	Value	Unit
OFFBTM_TH	Threshold for deciding whether the bit is off bottom	DnMWWorkflow	Time Zoned	ft
Time Zone Parameters				
Parameter	Value	Start	Stop	
OFFBTM_TH	0	01-Feb-2011 06:54:11	01-Feb-2011 06:55:18	
OFFBTM_TH	0.1	01-Feb-2011 06:55:18	04-Feb-2011 17:44:15	

Company:	ExxonMobil Oil Corporation
Well:	PCU 296 6B2

Field: Piceance Creek
County: Rio Blanco
State: Colorado
Country: USA



Schlumberger

PERFORM - Drilling Mechanics

2 in / hr Time Based

Real Time Log