

# KERR MCGEE OIL & GAS ONSHORE LP

Location: COLORADO Slot: SLOT#04 GUERREO 35-7 (519'FSL & 558'FWL)  
 Field: WELD COUNTY (KERR MCGEE) Well: GUERREO 35-7  
 Facility: SEC.07-T2N-R65W Wellbore: GUERREO 35-7 PWB



## Well Profile Data

Design Comment	MD (ft)	Inc (°)	Az (°)	TVD (ft)	Local N (ft)	Local E (ft)	DLS (°/100ft)	VS (ft)
Tie On	15.00	0.000	118.653	15.00	0.00	0.00	0.00	0.00
End of Tangent	300.00	0.000	118.653	300.00	0.00	0.00	0.00	0.00
End of Build	750.00	9.000	118.653	748.15	-16.91	30.95	2.00	35.27
End of Tangent	900.00	9.000	118.653	896.30	-28.16	51.54	0.00	58.74
Build (S)	1250.00	16.000	118.653	1237.80	-64.47	117.98	2.00	134.44
End of Tangent (S)	3884.79	16.000	118.653	3770.52	-412.71	755.29	0.00	860.69
Drop (S)	4684.79	0.000	118.653	4560.17	-465.92	852.68	2.00	971.67
End of Tangent	8123.63	0.000	118.653	7999.00	-465.92	852.68	0.00	971.67

## Location Information

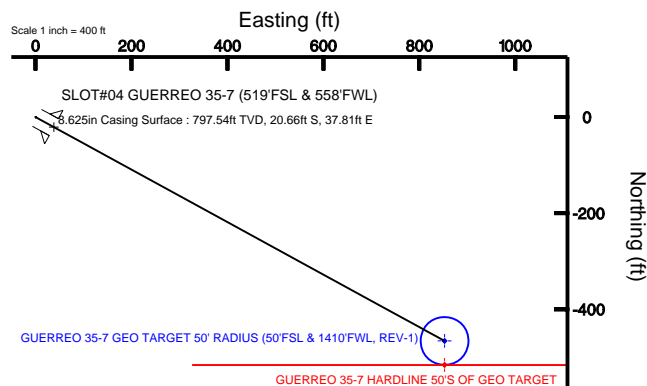
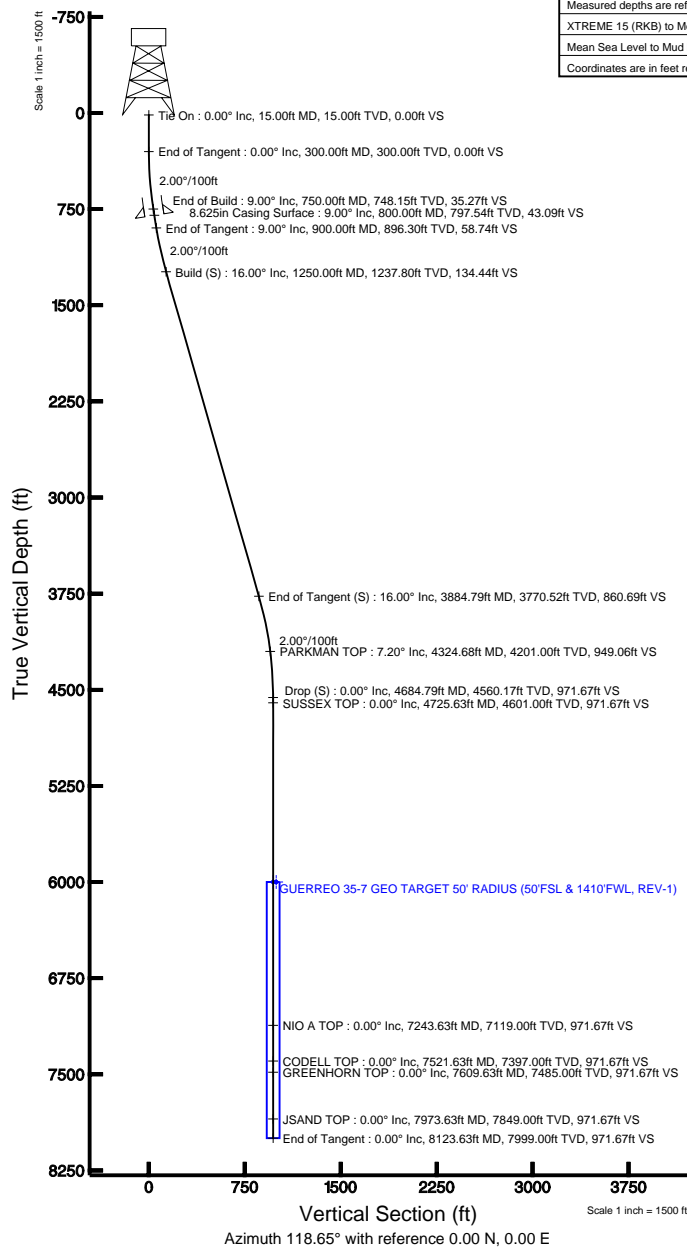
Facility Name				Grid East (USft)	Grid North (USft)	Latitude	Longitude
SEC.07-T2N-R65W				3219721.287	1297490.261	40°08'50.395"N	104°42'50.411"W
Slot		Local N (ft)	Local E (ft)	Grid East (USft)	Grid North (USft)	Latitude	Longitude
SLOT#04 GUERREO 35-7 (519'FSL & 558'FWL)		1.09	48.08	3219769.358	1297491.780	40°08'50.406"N	104°42'49.792"W
XTREME 15 (RKB) to Mud line (Facility: SEC.07-T2N-R65W)				5001ft			
Mean Sea Level to Mud line (Facility: SEC.07-T2N-R65W)				0ft			
XTREME 15 (RKB) to Mean Sea Level				5001ft			

## Targets

Name	MD (ft)	TVD (ft)	Local N (ft)	Local E (ft)	Grid East (USft)	Grid North (USft)	Latitude	Longitude
GUERREO 35-7 GEO TARGET 50' RADIUS (50'FSL & 1410'FWL, REV-1)		6000.00	-465.92	852.68	3220626.09	1297033.46	40°08'45.802"N	104°42'38.812"W
GUERREO 35-7 HARDLINE 50'S OF GEO TARGET		6000.00	-515.92	852.68	3220626.54	1296983.46	40°08'45.307"N	104°42'38.812"W

## Plot reference wellpath is GUERREO 35-7 (REV-A.0) PWP

True vertical depths are referenced to XTREME 15 (RKB)	Grid System: NAD83 / Lambert Colorado State Planes, Northern Zone (501), US feet
Measured depths are referenced to XTREME 15 (RKB)	North Reference: True north
XTREME 15 (RKB) to Mean Sea Level: 5001 feet	Scale: True distance
Mean Sea Level to Mud line (Facility: SEC.07-T2N-R65W): 0 feet	Depths are in feet
Coordinates are in feet referenced to Slot	Created by: cookdarn on 4/1/2011



BGGM (1945.0 to 2012.0) Dip: 66.87° Field: 53041.5 nT  
 Magnetic North is 8.81 degrees East of True North (at 4/1/2011)

To correct azimuth from Magnetic to True add 8.81 degrees  
 For example: if the Magnetic North Azimuth = 90 degs, then the Grid North Azimuth = 90 + 8.81 = 98.81



# Planned Wellpath Report

GUERREO 35-7 (REV-A.0) PWP

Page 1 of 5



INTEQ

## REFERENCE WELLPATH IDENTIFICATION

Operator	KERR MCGEE OIL & GAS ONSHORE LP	Slot	SLOT#04 GUERREO 35-7 (519'FSL & 558'FWL)
Area	COLORADO	Well	GUERREO 35-7
Field	WELD COUNTY (KERR MCGEE)	Wellbore	GUERREO 35-7 PWB
Facility	SEC.07-T2N-R65W		

## REPORT SETUP INFORMATION

Projection System	NAD83 / Lambert Colorado State Planes, Northern Zone (501), US feet	Software System	WellArchitect® 2.0
North Reference	True	User	Cookdanm
Scale	0.999958	Report Generated	4/1/2011 at 12:19:52 PM
Convergence at slot	0.51° East	Database/Source file	Denver Server/GUERREO_35-7_PWB.xml

## WELLPATH LOCATION

	Local coordinates		Grid coordinates		Geographic coordinates	
	North[ft]	East[ft]	Easting[USft]	Northing[USft]	Latitude	Longitude
Slot Location	1.09	48.08	3219769.36	1297491.78	40°08'50.406"N	104°42'49.792"W
Facility Reference Pt			3219721.29	1297490.26	40°08'50.395"N	104°42'50.411"W
Field Reference Pt			3197771.84	1268891.29	40°04'09.600"N	104°47'36.000"W

## WELLPATH DATUM

Calculation method	Minimum curvature	XTREME 15 (RKB) to Facility Vertical Datum	5001.00ft
Horizontal Reference Pt	Slot	XTREME 15 (RKB) to Mean Sea Level	5001.00ft
Vertical Reference Pt	XTREME 15 (RKB)	Facility Vertical Datum to Mud Line (Facility)	0.00ft
MD Reference Pt	XTREME 15 (RKB)	Section Origin	N 0.00, E 0.00 ft
Field Vertical Reference	Mean Sea Level	Section Azimuth	118.65°



# Planned Wellpath Report

GUERREO 35-7 (REV-A.0) PWP

Page 2 of 5



INTEQ

## REFERENCE WELLPATH IDENTIFICATION

Operator	KERR MCGEE OIL & GAS ONSHORE LP	Slot	SLOT#04 GUERREO 35-7 (519'FSL & 558'FWL)
Area	COLORADO	Well	GUERREO 35-7
Field	WELD COUNTY (KERR MCGEE)	Wellbore	GUERREO 35-7 PWB
Facility	SEC.07-T2N-R65W		

## WELLPATH DATA (96 stations) † = interpolated/extrapolated station

MD [ft]	Inclination [°]	Azimuth [°]	TVD [ft]	Vert Sect [ft]	North [ft]	East [ft]	DLS [°/100ft]	Comments
0.00†	0.000	118.653	0.00	0.00	0.00	0.00	0.00	
15.00	0.000	118.653	15.00	0.00	0.00	0.00	0.00	Tie On
115.00†	0.000	118.653	115.00	0.00	0.00	0.00	0.00	
215.00†	0.000	118.653	215.00	0.00	0.00	0.00	0.00	
300.00	0.000	118.653	300.00	0.00	0.00	0.00	0.00	End of Tangent
315.00†	0.300	118.653	315.00	0.04	-0.02	0.03	2.00	
415.00†	2.300	118.653	414.97	2.31	-1.11	2.03	2.00	
515.00†	4.300	118.653	514.80	8.06	-3.87	7.08	2.00	
615.00†	6.300	118.653	614.37	17.30	-8.30	15.18	2.00	
715.00†	8.300	118.653	713.55	30.01	-14.39	26.33	2.00	
750.00	9.000	118.653	748.15	35.27	-16.91	30.95	2.00	End of Build
815.00†	9.000	118.653	812.35	45.44	-21.79	39.87	0.00	
900.00	9.000	118.653	896.30	58.74	-28.16	51.54	0.00	End of Tangent
915.00†	9.300	118.653	911.11	61.12	-29.31	53.64	2.00	
1015.00†	11.300	118.653	1009.50	79.00	-37.88	69.33	2.00	
1115.00†	13.300	118.653	1107.20	100.30	-48.10	88.02	2.00	
1215.00†	15.300	118.653	1204.09	125.00	-59.94	109.69	2.00	
1250.00	16.000	118.653	1237.80	134.44	-64.47	117.98	2.00	Build (S)
1315.00†	16.000	118.653	1300.28	152.36	-73.06	133.70	0.00	
1415.00†	16.000	118.653	1396.40	179.92	-86.27	157.89	0.00	
1515.00†	16.000	118.653	1492.53	207.49	-99.49	182.08	0.00	
1615.00†	16.000	118.653	1588.66	235.05	-112.71	206.27	0.00	
1715.00†	16.000	118.653	1684.78	262.61	-125.92	230.45	0.00	
1815.00†	16.000	118.653	1780.91	290.18	-139.14	254.64	0.00	
1915.00†	16.000	118.653	1877.04	317.74	-152.36	278.83	0.00	
2015.00†	16.000	118.653	1973.16	345.30	-165.58	303.02	0.00	
2115.00†	16.000	118.653	2069.29	372.87	-178.79	327.21	0.00	
2215.00†	16.000	118.653	2165.41	400.43	-192.01	351.39	0.00	
2315.00†	16.000	118.653	2261.54	428.00	-205.23	375.58	0.00	
2415.00†	16.000	118.653	2357.67	455.56	-218.44	399.77	0.00	
2515.00†	16.000	118.653	2453.79	483.12	-231.66	423.96	0.00	
2615.00†	16.000	118.653	2549.92	510.69	-244.88	448.15	0.00	
2715.00†	16.000	118.653	2646.04	538.25	-258.09	472.34	0.00	
2815.00†	16.000	118.653	2742.17	565.81	-271.31	496.52	0.00	
2915.00†	16.000	118.653	2838.30	593.38	-284.53	520.71	0.00	
3015.00†	16.000	118.653	2934.42	620.94	-297.75	544.90	0.00	
3115.00†	16.000	118.653	3030.55	648.51	-310.96	569.09	0.00	
3215.00†	16.000	118.653	3126.68	676.07	-324.18	593.28	0.00	
3315.00†	16.000	118.653	3222.80	703.63	-337.40	617.47	0.00	
3415.00†	16.000	118.653	3318.93	731.20	-350.61	641.65	0.00	
3515.00†	16.000	118.653	3415.05	758.76	-363.83	665.84	0.00	
3615.00†	16.000	118.653	3511.18	786.32	-377.05	690.03	0.00	
3715.00†	16.000	118.653	3607.31	813.89	-390.26	714.22	0.00	
3815.00†	16.000	118.653	3703.43	841.45	-403.48	738.41	0.00	
3884.79	16.000	118.653	3770.52	860.69	-412.71	755.29	0.00	End of Tangent (S)



# Planned Wellpath Report

GUERREO 35-7 (REV-A.0) PWP

Page 3 of 5



INTEQ

## REFERENCE WELLPATH IDENTIFICATION

Operator	KERR MCGEE OIL & GAS ONSHORE LP	Slot	SLOT#04 GUERREO 35-7 (519'FSL & 558'FWL)
Area	COLORADO	Well	GUERREO 35-7
Field	WELD COUNTY (KERR MCGEE)	Wellbore	GUERREO 35-7 PWB
Facility	SEC.07-T2N-R65W		

## WELLPATH DATA (96 stations) † = interpolated/extrapolated station

MD [ft]	Inclination [°]	Azimuth [°]	TVD [ft]	Vert Sect [ft]	North [ft]	East [ft]	DLS [°/100ft]	Comments
3915.00†	15.396	118.653	3799.60	868.86	-416.62	762.46	2.00	
4015.00†	13.396	118.653	3896.46	893.72	-428.55	784.28	2.00	
4115.00†	11.396	118.653	3994.12	915.19	-438.84	803.11	2.00	
4215.00†	9.396	118.653	4092.47	933.23	-447.49	818.95	2.00	
4315.00†	7.396	118.653	4191.40	947.83	-454.49	831.76	2.00	
4324.68†	7.202	118.653	4201.00	949.06	-455.08	832.84	2.00	PARKMAN TOP
4415.00†	5.396	118.653	4290.77	958.97	-459.83	841.54	2.00	
4515.00†	3.396	118.653	4390.47	966.64	-463.51	848.26	2.00	
4615.00†	1.396	118.653	4490.38	970.82	-465.51	851.93	2.00	
4684.79	0.000	118.653	4560.17 <sup>†</sup>	971.67	-465.92	852.68	2.00	Drop (S)
4715.00†	0.000	118.653	4590.37	971.67	-465.92	852.68	0.00	
4725.63†	0.000	118.653	4601.00	971.67	-465.92	852.68	0.00	SUSSEX TOP
4815.00†	0.000	118.653	4690.37	971.67	-465.92	852.68	0.00	
4915.00†	0.000	118.653	4790.37	971.67	-465.92	852.68	0.00	
5015.00†	0.000	118.653	4890.37	971.67	-465.92	852.68	0.00	
5115.00†	0.000	118.653	4990.37	971.67	-465.92	852.68	0.00	
5215.00†	0.000	118.653	5090.37	971.67	-465.92	852.68	0.00	
5315.00†	0.000	118.653	5190.37	971.67	-465.92	852.68	0.00	
5415.00†	0.000	118.653	5290.37	971.67	-465.92	852.68	0.00	
5515.00†	0.000	118.653	5390.37	971.67	-465.92	852.68	0.00	
5615.00†	0.000	118.653	5490.37	971.67	-465.92	852.68	0.00	
5715.00†	0.000	118.653	5590.37	971.67	-465.92	852.68	0.00	
5815.00†	0.000	118.653	5690.37	971.67	-465.92	852.68	0.00	
5915.00†	0.000	118.653	5790.37	971.67	-465.92	852.68	0.00	
6015.00†	0.000	118.653	5890.37	971.67	-465.92	852.68	0.00	
6115.00†	0.000	118.653	5990.37	971.67	-465.92	852.68	0.00	
6215.00†	0.000	118.653	6090.37	971.67	-465.92	852.68	0.00	
6315.00†	0.000	118.653	6190.37	971.67	-465.92	852.68	0.00	
6415.00†	0.000	118.653	6290.37	971.67	-465.92	852.68	0.00	
6515.00†	0.000	118.653	6390.37	971.67	-465.92	852.68	0.00	
6615.00†	0.000	118.653	6490.37	971.67	-465.92	852.68	0.00	
6715.00†	0.000	118.653	6590.37	971.67	-465.92	852.68	0.00	
6815.00†	0.000	118.653	6690.37	971.67	-465.92	852.68	0.00	
6915.00†	0.000	118.653	6790.37	971.67	-465.92	852.68	0.00	
7015.00†	0.000	118.653	6890.37	971.67	-465.92	852.68	0.00	
7115.00†	0.000	118.653	6990.37	971.67	-465.92	852.68	0.00	
7215.00†	0.000	118.653	7090.37	971.67	-465.92	852.68	0.00	
7243.63†	0.000	118.653	7119.00	971.67	-465.92	852.68	0.00	NIO A TOP
7315.00†	0.000	118.653	7190.37	971.67	-465.92	852.68	0.00	
7415.00†	0.000	118.653	7290.37	971.67	-465.92	852.68	0.00	
7515.00†	0.000	118.653	7390.37	971.67	-465.92	852.68	0.00	
7521.63†	0.000	118.653	7397.00	971.67	-465.92	852.68	0.00	CODELL TOP
7609.63†	0.000	118.653	7485.00	971.67	-465.92	852.68	0.00	GREENHORN TOP
7615.00†	0.000	118.653	7490.37	971.67	-465.92	852.68	0.00	
7715.00†	0.000	118.653	7590.37	971.67	-465.92	852.68	0.00	



# Planned Wellpath Report

GUERREO 35-7 (REV-A.0) PWP

Page 4 of 5



INTEQ

## REFERENCE WELLPATH IDENTIFICATION

Operator	KERR MCGEE OIL & GAS ONSHORE LP	Slot	SLOT#04 GUERREO 35-7 (519'FSL & 558'FWL)
Area	COLORADO	Well	GUERREO 35-7
Field	WELD COUNTY (KERR MCGEE)	Wellbore	GUERREO 35-7 PWB
Facility	SEC.07-T2N-R65W		

## WELLPATH DATA (96 stations) † = interpolated/extrapolated station

MD [ft]	Inclination [°]	Azimuth [°]	TVD [ft]	Vert Sect [ft]	North [ft]	East [ft]	DLS [°/100ft]	Comments
7815.00†	0.000	118.653	7690.37	971.67	-465.92	852.68	0.00	
7915.00†	0.000	118.653	7790.37	971.67	-465.92	852.68	0.00	
7973.63†	0.000	118.653	7849.00	971.67	-465.92	852.68	0.00	JSAND TOP
8015.00†	0.000	118.653	7890.37	971.67	-465.92	852.68	0.00	
8115.00†	0.000	118.653	7990.37	971.67	-465.92	852.68	0.00	
8123.63	0.000	118.653	7999.00	971.67	-465.92	852.68	0.00	End of Tangent

## HOLE & CASING SECTIONS

Ref Wellbore: GUERREO 35-7 PWB Ref Wellpath: GUERREO 35-7 (REV-A.0) PWP

String/Diameter	Start MD [ft]	End MD [ft]	Interval [ft]	Start TVD [ft]	End TVD [ft]	Start N/S [ft]	Start E/W [ft]	End N/S [ft]	End E/W [ft]
12.25in Open Hole	15.00	800.00	785.00	15.00	797.54	0.00	0.00	-20.66	37.81
8.625in Casing Surface	15.00	800.00	785.00	15.00	797.54	0.00	0.00	-20.66	37.81
7.875in Open Hole	800.00	8123.63	7323.63	797.54	7999.00	-20.66	37.81	-465.92	852.68

## TARGETS

Name	MD [ft]	TVD [ft]	North [ft]	East [ft]	Grid East [srv ft]	Grid North [srv ft]	Latitude	Longitude	Shape
1) GUERREO 35-7 GEO TARGET 50' RADIUS (50'FSL & 1410'FWL, REV-1)		6000.00	-465.92	852.68	3220626.09	1297033.46	40°08'45.802"N	104°42'38.812"W	circle
GUERREO 35-7 HARDLINE 50'S OF GEO TARGET		6000.00	-515.92	852.68	3220626.54	1296983.46	40°08'45.307"N	104°42'38.812"W	point

## SURVEY PROGRAM Ref Wellbore: GUERREO 35-7 PWB Ref Wellpath: GUERREO 35-7 (REV-A.0) PWP

Start MD [ft]	End MD [ft]	Positional Uncertainty Model	Log Name/Comment	Wellbore
15.00	8123.63	NaviTrak (Standard)		GUERREO 35-7 PWB



# Planned Wellpath Report

GUERREO 35-7 (REV-A.0) PWP

Page 5 of 5



INTEQ

## REFERENCE WELLPATH IDENTIFICATION

Operator	KERR MCGEE OIL & GAS ONSHORE LP	Slot	SLOT#04 GUERREO 35-7 (519'FSL & 558'FWL)
Area	COLORADO	Well	GUERREO 35-7
Field	WELD COUNTY (KERR MCGEE)	Wellbore	GUERREO 35-7 PWB
Facility	SEC.07-T2N-R65W		

## WELLPATH COMMENTS

MD [ft]	Inclination [°]	Azimuth [°]	TVD [ft]	Comment
4324.68	7.202	118.653	4201.00	PARKMAN TOP
4725.63	0.000	118.653	4601.00	SUSSEX TOP
7243.63	0.000	118.653	7119.00	NIO A TOP
7521.63	0.000	118.653	7397.00	CODELL TOP
7609.63	0.000	118.653	7485.00	GREENHORN TOP
7973.63	0.000	118.653	7849.00	JSAND TOP