



Location:	COLORADO	Slot:	SLOT#05 GUERRERO 14-7 (519'FSL & 574'FWL)
Field:	WELD COUNTY (KERR MCGEE)	Well:	GUERRERO 14-7
Facility:	SEC.07-T2N-R65W	Wellbore:	GUERRERO 14-7 PWB

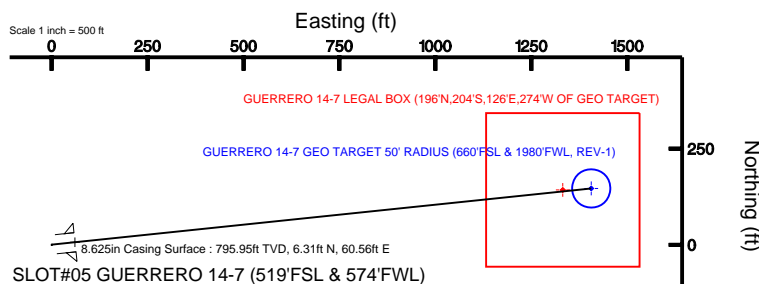
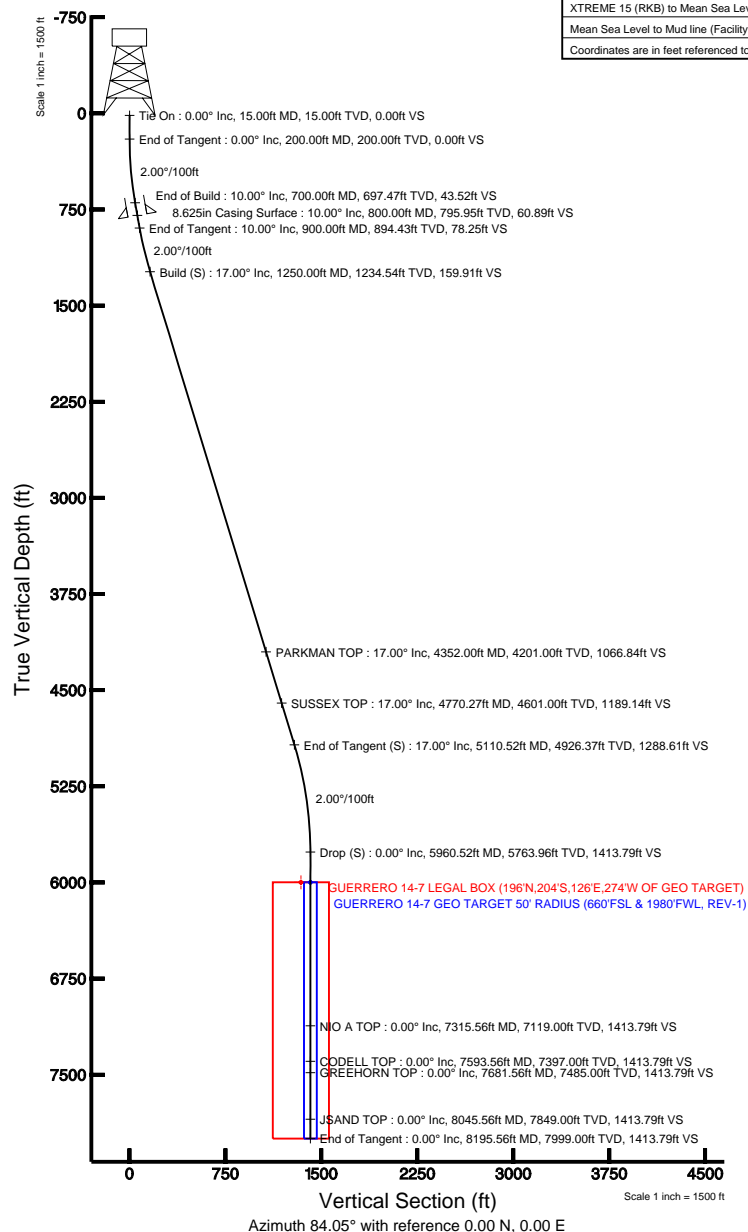
Well Profile Data								
Design Comment	MD (ft)	Inc (°)	Az (°)	TVD (ft)	Local N (ft)	Local E (ft)	DLS (°/100ft)	VS (ft)
Tie On	15.00	0.000	84.053	15.00	0.00	0.00	0.00	0.00
End of Tangent	200.00	0.000	84.053	200.00	0.00	0.00	0.00	0.00
End of Build	700.00	10.000	84.053	697.47	4.51	43.29	2.00	43.52
End of Tangent	900.00	10.000	84.053	894.43	8.11	77.83	0.00	78.25
Build (S)	1250.00	17.000	84.053	1234.54	16.57	159.05	2.00	159.91
End of Tangent (S)	5110.52	17.000	84.053	4926.37	133.52	1281.68	0.00	1288.61
Drop (S)	5960.52	0.000	84.053	5763.96	146.49	1406.18	2.00	1413.79
End of Tangent	8195.56	0.000	84.053	7999.00	146.49	1406.18	0.00	1413.79

Location Information						
Facility Name			Grid East (USft)	Grid North (USft)	Latitude	Longitude
SEC.07-T2N-R65W			3219721.287	1297490.261	40°08'50.395"N	104°42'50.411"W
Slot	Local N (ft)	Local E (ft)	Grid East (USft)	Grid North (USft)	Latitude	Longitude
SLOT#05 GUERRERO 14-7 (519FSL & 574FWL)	1.09	64.02	3219785.292	1297491.921	40°08'50.406"N	104°42'49.586"W
XTREME 15 (RKB) to Mud line (Facility: SEC.07-T2N-R65W)					5001ft	
Mean Sea Level to Mud line (Facility: SEC.07-T2N-R65W)					0ft	
XTREME 15 (RKB) to Mean Sea Level					5001ft	

Targets								
Name	MD (ft)	TVD (ft)	Local N (ft)	Local E (ft)	Grid East (USF)	Grid North (USF)	Latitude	Longitude
GUERRERO 14-7 GEO TARGET 50' RADIUS (6605FS, 1.980/FWL, REV-1)	6000.00	146.49	1406.18	3221190.06	1297650.86	40°08'51.853"N	104°42'31.478"W	
GUERRERO 14-7 LEGAL BOX (146N,204S,120E,274W) OF GEO TARGET	6000.00	142.49	1332.18	3221115.10	1297646.21	40°08'51.814"N	104°42'32.431"W	

Plot reference wellpath is GUERRERO 14-7 (REV-B.0) PWP

True vertical depths are referenced to XTREME 15 (RKB)	Grid System: NAD83 / Lambert Colorado State Planes, Northern Zone (501), US feet
Measured depths are referenced to XTREME 15 (RKB)	North Reference: True north
XTREME 15 (RKB) to Mean Sea Level: 5001 feet	Scale: True distance
Mean Sea Level to Mud line (Facility: SEC.07-T2N-R65W): 0 feet	Depths are in feet
Coordinates are in feet referenced to Sht	Created by: cookdamm on 4/7/2011



BGGM (1945.0 to 2012.0) Dip: 66.87° Field: 53041.5 nT
Magnetic North is 8.81 degrees East of True North (at 4/1/2011)

To correct azimuth from Magnetic to True add 8.81 degrees
For example: if the Magnetic North Azimuth = 90 degs, then the Grid North Azimuth = $90 + 8.81 = 98.81$



Planned Wellpath Report

GUERRERO 14-7 (REV-B.0) PWP

Page 1 of 5



INTEQ

REFERENCE WELLPATH IDENTIFICATION

Operator	KERR MCGEE OIL & GAS ONSHORE LP	Slot	SLOT#05 GUERRERO 14-7 (519'FSL & 574'FWL)
Area	COLORADO	Well	GUERRERO 14-7
Field	WELD COUNTY (KERR MCGEE)	Wellbore	GUERRERO 14-7 PWB
Facility	SEC.07-T2N-R65W		

REPORT SETUP INFORMATION

Projection System	NAD83 / Lambert Colorado State Planes, Northern Zone (501), US feet	Software System	WellArchitect® 2.0
North Reference	True	User	Cookdanm
Scale	0.999958	Report Generated	4/7/2011 at 3:41:27 PM
Convergence at slot	0.51° East	Database/Source file	Denver Server/GUERRERO_14-7_PWB.xml

WELLPATH LOCATION

	Local coordinates		Grid coordinates		Geographic coordinates	
	North[ft]	East[ft]	Easting[USft]	Northing[USft]	Latitude	Longitude
Slot Location	1.09	64.02	3219785.29	1297491.92	40°08'50.406"N	104°42'49.586"W
Facility Reference Pt			3219721.29	1297490.26	40°08'50.395"N	104°42'50.411"W
Field Reference Pt			3197771.84	1268891.29	40°04'09.600"N	104°47'36.000"W

WELLPATH DATUM

Calculation method	Minimum curvature	XTREME 15 (RKB) to Facility Vertical Datum	5001.00ft
Horizontal Reference Pt	Slot	XTREME 15 (RKB) to Mean Sea Level	5001.00ft
Vertical Reference Pt	XTREME 15 (RKB)	Facility Vertical Datum to Mud Line (Facility)	0.00ft
MD Reference Pt	XTREME 15 (RKB)	Section Origin	N 0.00, E 0.00 ft
Field Vertical Reference	Mean Sea Level	Section Azimuth	84.05°



Planned Wellpath Report

GUERRERO 14-7 (REV-B.0) PWP

Page 2 of 5



INTEQ

REFERENCE WELLPATH IDENTIFICATION

Operator	KERR MCGEE OIL & GAS ONSHORE LP	Slot	SLOT#05 GUERRERO 14-7 (519'FSL & 574'FWL)
Area	COLORADO	Well	GUERRERO 14-7
Field	WELD COUNTY (KERR MCGEE)	Wellbore	GUERRERO 14-7 PWB
Facility	SEC.07-T2N-R65W		

WELLPATH DATA (96 stations) † = interpolated/extrapolated station

MD [ft]	Inclination [°]	Azimuth [°]	TVD [ft]	Vert Sect [ft]	North [ft]	East [ft]	DLS [°/100ft]	Comments
0.00†	0.000	84.053	0.00	0.00	0.00	0.00	0.00	
15.00	0.000	84.053	15.00	0.00	0.00	0.00	0.00	Tie On
115.00†	0.000	84.053	115.00	0.00	0.00	0.00	0.00	
200.00	0.000	84.053	200.00	0.00	0.00	0.00	0.00	End of Tangent
215.00†	0.300	84.053	215.00	0.04	0.00	0.04	2.00	
315.00†	2.300	84.053	314.97	2.31	0.24	2.30	2.00	
415.00†	4.300	84.053	414.80	8.06	0.84	8.02	2.00	
515.00†	6.300	84.053	514.37	17.30	1.79	17.21	2.00	
615.00†	8.300	84.053	613.55	30.01	3.11	29.84	2.00	
700.00	10.000	84.053	697.47	43.52	4.51	43.29	2.00	End of Build
715.00†	10.000	84.053	712.24	46.13	4.78	45.88	0.00	
815.00†	10.000	84.053	810.72	63.49	6.58	63.15	0.00	
900.00	10.000	84.053	894.43	78.25	8.11	77.83	0.00	End of Tangent
915.00†	10.300	84.053	909.19	80.90	8.38	80.46	2.00	
1015.00†	12.300	84.053	1007.25	100.49	10.41	99.95	2.00	
1115.00†	14.300	84.053	1104.56	123.49	12.80	122.83	2.00	
1215.00†	16.300	84.053	1201.01	149.88	15.53	149.07	2.00	
1250.00	17.000	84.053	1234.54	159.91	16.57	159.05	2.00	Build (S)
1315.00†	17.000	84.053	1296.70	178.91	18.54	177.95	0.00	
1415.00†	17.000	84.053	1392.34	208.15	21.57	207.03	0.00	
1515.00†	17.000	84.053	1487.97	237.39	24.60	236.11	0.00	
1615.00†	17.000	84.053	1583.60	266.62	27.63	265.19	0.00	
1715.00†	17.000	84.053	1679.23	295.86	30.65	294.27	0.00	
1815.00†	17.000	84.053	1774.86	325.10	33.68	323.35	0.00	
1915.00†	17.000	84.053	1870.49	354.33	36.71	352.43	0.00	
2015.00†	17.000	84.053	1966.12	383.57	39.74	381.51	0.00	
2115.00†	17.000	84.053	2061.75	412.81	42.77	410.59	0.00	
2215.00†	17.000	84.053	2157.38	442.05	45.80	439.67	0.00	
2315.00†	17.000	84.053	2253.01	471.28	48.83	468.75	0.00	
2415.00†	17.000	84.053	2348.64	500.52	51.86	497.83	0.00	
2515.00†	17.000	84.053	2444.27	529.76	54.89	526.91	0.00	
2615.00†	17.000	84.053	2539.90	558.99	57.92	555.99	0.00	
2715.00†	17.000	84.053	2635.53	588.23	60.95	585.07	0.00	
2815.00†	17.000	84.053	2731.16	617.47	63.98	614.15	0.00	
2915.00†	17.000	84.053	2826.79	646.71	67.01	643.23	0.00	
3015.00†	17.000	84.053	2922.42	675.94	70.04	672.31	0.00	
3115.00†	17.000	84.053	3018.05	705.18	73.07	701.39	0.00	
3215.00†	17.000	84.053	3113.68	734.42	76.10	730.46	0.00	
3315.00†	17.000	84.053	3209.31	763.65	79.12	759.54	0.00	
3415.00†	17.000	84.053	3304.94	792.89	82.15	788.62	0.00	
3515.00†	17.000	84.053	3400.58	822.13	85.18	817.70	0.00	
3615.00†	17.000	84.053	3496.21	851.37	88.21	846.78	0.00	
3715.00†	17.000	84.053	3591.84	880.60	91.24	875.86	0.00	
3815.00†	17.000	84.053	3687.47	909.84	94.27	904.94	0.00	
3915.00†	17.000	84.053	3783.10	939.08	97.30	934.02	0.00	



Planned Wellpath Report

GUERRERO 14-7 (REV-B.0) PWP

Page 3 of 5



INTEQ

REFERENCE WELLPATH IDENTIFICATION

Operator	KERR MCGEE OIL & GAS ONSHORE LP	Slot	SLOT#05 GUERRERO 14-7 (519'FSL & 574'FWL)
Area	COLORADO	Well	GUERRERO 14-7
Field	WELD COUNTY (KERR MCGEE)	Wellbore	GUERRERO 14-7 PWB
Facility	SEC.07-T2N-R65W		

WELLPATH DATA (96 stations) † = interpolated/extrapolated station

MD [ft]	Inclination [°]	Azimuth [°]	TVD [ft]	Vert Sect [ft]	North [ft]	East [ft]	DLS [°/100ft]	Comments
4015.00†	17.000	84.053	3878.73	968.32	100.33	963.10	0.00	
4115.00†	17.000	84.053	3974.36	997.55	103.36	992.18	0.00	
4215.00†	17.000	84.053	4069.99	1026.79	106.39	1021.26	0.00	
4315.00†	17.000	84.053	4165.62	1056.03	109.42	1050.34	0.00	
4352.00†	17.000	84.053	4201.00	1066.84	110.54	1061.10	0.00	PARKMAN TOP
4415.00†	17.000	84.053	4261.25	1085.26	112.45	1079.42	0.00	
4515.00†	17.000	84.053	4356.88	1114.50	115.48	1108.50	0.00	
4615.00†	17.000	84.053	4452.51	1143.74	118.51	1137.58	0.00	
4715.00†	17.000	84.053	4548.14	1172.98	121.54	1166.66	0.00	
4770.27†	17.000	84.053	4601.00	1189.14	123.21	1182.74	0.00	SUSSEX TOP
4815.00†	17.000	84.053	4643.77	1202.21	124.56	1195.74	0.00	
4915.00†	17.000	84.053	4739.40	1231.45	127.59	1224.82	0.00	
5015.00†	17.000	84.053	4835.03	1260.69	130.62	1253.90	0.00	
5110.52	17.000	84.053	4926.37	1288.61	133.52	1281.68	0.00	End of Tangent (S)
5115.00†	16.910	84.053	4930.66	1289.92	133.65	1282.98	2.00	
5215.00†	14.910	84.053	5026.83	1317.33	136.49	1310.24	2.00	
5315.00†	12.910	84.053	5123.89	1341.37	138.98	1334.15	2.00	
5415.00†	10.910	84.053	5221.73	1362.01	141.12	1354.68	2.00	
5515.00†	8.910	84.053	5320.24	1379.22	142.90	1371.79	2.00	
5615.00†	6.910	84.053	5419.28	1392.98	144.33	1385.48	2.00	
5715.00†	4.910	84.053	5518.74	1403.28	145.40	1395.72	2.00	
5815.00†	2.910	84.053	5618.50	1410.10	146.10	1402.51	2.00	
5915.00†	0.910	84.053	5718.44	1413.43	146.45	1405.82	2.00	
5960.52	0.000	84.053	5763.96 ¹	1413.79	146.49	1406.18	2.00	Drop (S)
6015.00†	0.000	84.053	5818.44	1413.79	146.49	1406.18	0.00	
6115.00†	0.000	84.053	5918.44	1413.79	146.49	1406.18	0.00	
6215.00†	0.000	84.053	6018.44	1413.79	146.49	1406.18	0.00	
6315.00†	0.000	84.053	6118.44	1413.79	146.49	1406.18	0.00	
6415.00†	0.000	84.053	6218.44	1413.79	146.49	1406.18	0.00	
6515.00†	0.000	84.053	6318.44	1413.79	146.49	1406.18	0.00	
6615.00†	0.000	84.053	6418.44	1413.79	146.49	1406.18	0.00	
6715.00†	0.000	84.053	6518.44	1413.79	146.49	1406.18	0.00	
6815.00†	0.000	84.053	6618.44	1413.79	146.49	1406.18	0.00	
6915.00†	0.000	84.053	6718.44	1413.79	146.49	1406.18	0.00	
7015.00†	0.000	84.053	6818.44	1413.79	146.49	1406.18	0.00	
7115.00†	0.000	84.053	6918.44	1413.79	146.49	1406.18	0.00	
7215.00†	0.000	84.053	7018.44	1413.79	146.49	1406.18	0.00	
7315.00†	0.000	84.053	7118.44	1413.79	146.49	1406.18	0.00	
7315.56†	0.000	84.053	7119.00	1413.79	146.49	1406.18	0.00	NIO A TOP
7415.00†	0.000	84.053	7218.44	1413.79	146.49	1406.18	0.00	
7515.00†	0.000	84.053	7318.44	1413.79	146.49	1406.18	0.00	
7593.56†	0.000	84.053	7397.00	1413.79	146.49	1406.18	0.00	CODELL TOP
7615.00†	0.000	84.053	7418.44	1413.79	146.49	1406.18	0.00	
7681.56†	0.000	84.053	7485.00	1413.79	146.49	1406.18	0.00	GREEHORN TOP
7715.00†	0.000	84.053	7518.44	1413.79	146.49	1406.18	0.00	



Planned Wellpath Report

GUERRERO 14-7 (REV-B.0) PWP

Page 4 of 5



INTEQ

REFERENCE WELLPATH IDENTIFICATION

Operator	KERR MCGEE OIL & GAS ONSHORE LP	Slot	SLOT#05 GUERRERO 14-7 (519'FSL & 574'FWL)
Area	COLORADO	Well	GUERRERO 14-7
Field	WELD COUNTY (KERR MCGEE)	Wellbore	GUERRERO 14-7 PWB
Facility	SEC.07-T2N-R65W		

WELLPATH DATA (96 stations) † = interpolated/extrapolated station

MD [ft]	Inclination [°]	Azimuth [°]	TVD [ft]	Vert Sect [ft]	North [ft]	East [ft]	DLS [°/100ft]	Comments
7815.00†	0.000	84.053	7618.44	1413.79	146.49	1406.18	0.00	
7915.00†	0.000	84.053	7718.44	1413.79	146.49	1406.18	0.00	
8015.00†	0.000	84.053	7818.44	1413.79	146.49	1406.18	0.00	
8045.56†	0.000	84.053	7849.00	1413.79	146.49	1406.18	0.00	JSAND TOP
8115.00†	0.000	84.053	7918.44	1413.79	146.49	1406.18	0.00	
8195.56	0.000	84.053	7999.00	1413.79	146.49	1406.18	0.00	End of Tangent

HOLE & CASING SECTIONS

Ref Wellbore: GUERRERO 14-7 PWB Ref Wellpath: GUERRERO 14-7 (REV-B.0) PWP

String/Diameter	Start MD [ft]	End MD [ft]	Interval [ft]	Start TVD [ft]	End TVD [ft]	Start N/S [ft]	Start E/W [ft]	End N/S [ft]	End E/W [ft]
12.25in Open Hole	15.00	800.00	785.00	15.00	795.95	0.00	0.00	6.31	60.56
8.625in Casing Surface	15.00	800.00	785.00	15.00	795.95	0.00	0.00	6.31	60.56
7.875in Open Hole	800.00	8195.56	7395.56	795.95	7999.00	6.31	60.56	146.49	1406.18

TARGETS

Name	MD [ft]	TVD [ft]	North [ft]	East [ft]	Grid East [srv ft]	Grid North [srv ft]	Latitude	Longitude	Shape
1) GUERRERO 14-7 GEO TARGET 50' RADIUS (660'FSL & 1980'FWL, REV-1)		6000.00	146.49	1406.18	3221190.06	1297650.86	40°08'51.853"N	104°42'31.478"W	circle
GUERRERO 14-7 LEGAL BOX (196'N,204'S,126'E,274'W OF GEO TARGET)		6000.00	142.49	1332.18	3221116.10	1297646.21	40°08'51.814"N	104°42'32.431"W	square

SURVEY PROGRAM Ref Wellbore: GUERRERO 14-7 PWB Ref Wellpath: GUERRERO 14-7 (REV-B.0) PWP

Start MD [ft]	End MD [ft]	Positional Uncertainty Model	Log Name/Comment	Wellbore
15.00	8195.56	NaviTrak (Standard)		GUERRERO 14-7 PWB



Planned Wellpath Report

GUERRERO 14-7 (REV-B.0) PWP

Page 5 of 5



INTEQ

REFERENCE WELLPATH IDENTIFICATION

Operator	KERR MCGEE OIL & GAS ONSHORE LP	Slot	SLOT#05 GUERRERO 14-7 (519'FSL & 574'FWL)
Area	COLORADO	Well	GUERRERO 14-7
Field	WELD COUNTY (KERR MCGEE)	Wellbore	GUERRERO 14-7 PWB
Facility	SEC.07-T2N-R65W		

WELLPATH COMMENTS

MD [ft]	Inclination [°]	Azimuth [°]	TVD [ft]	Comment
4352.00	17.000	84.053	4201.00	PARKMAN TOP
4770.27	17.000	84.053	4601.00	SUSSEX TOP
7315.56	0.000	84.053	7119.00	NIO A TOP
7593.56	0.000	84.053	7397.00	CODELL TOP
7681.56	0.000	84.053	7485.00	GREEHORN TOP
8045.56	0.000	84.053	7849.00	JSAND TOP