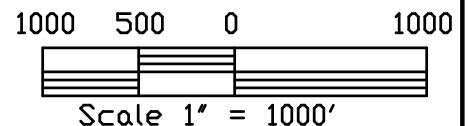
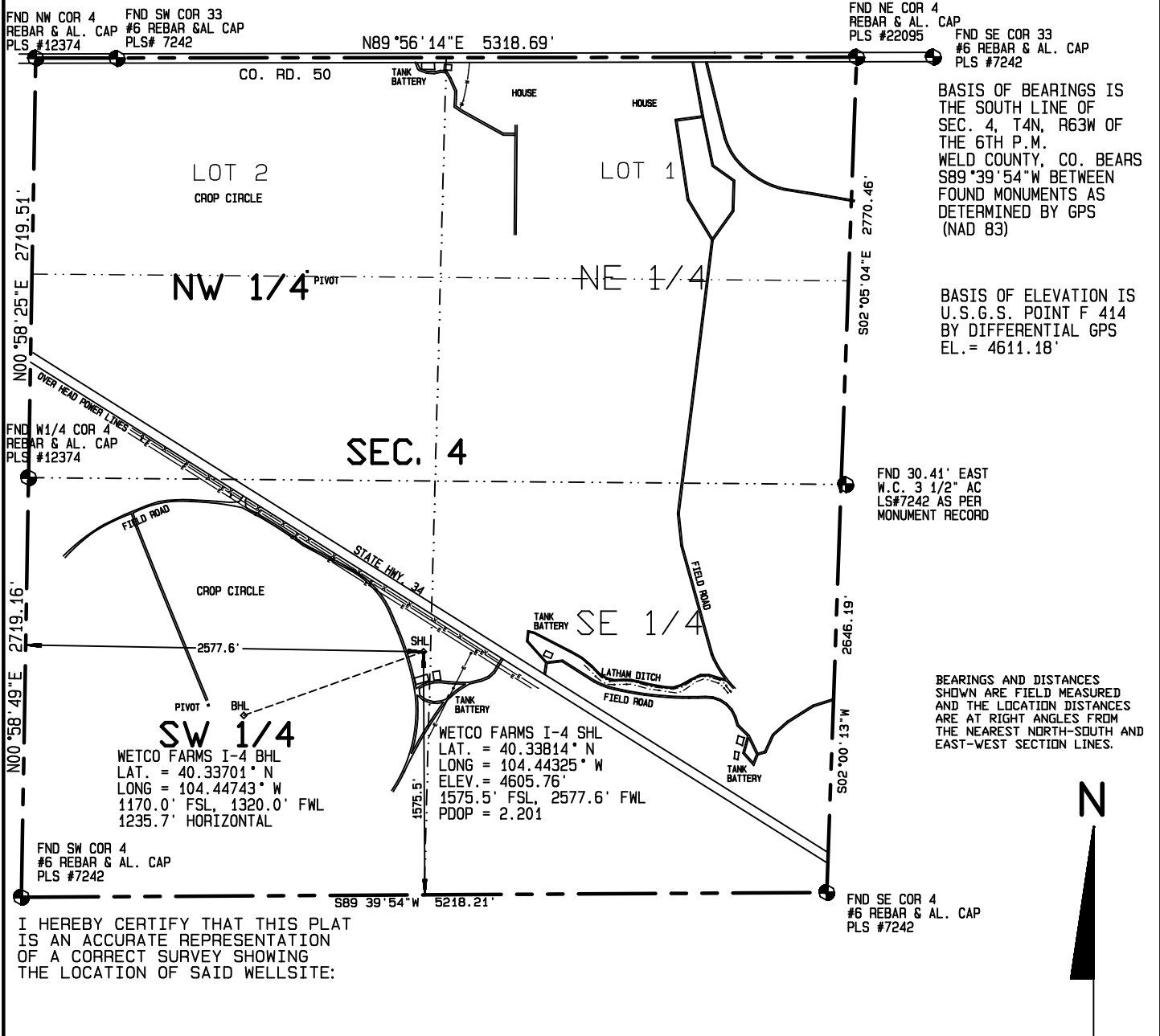


IMPROVEMENTS WITHIN 400' OF THE LOCATION INCLUDE: A WELL (WF-23-4) IS 44' SE, A TANK BATTERY IS 148' SOUTH, A CROP CIRCLE ROAD IS 103' SW, HIGH VOLTAGE POWER LINES RUN 174' NE, AN OVER HEAD POWER LINE RUNS 280' SE, AND STATE HIGHWAY 34 RUNS 234' NE.



Dan R. Griggs PLS# 38018

CONTRACT SURVEYORS, LTD. COMPLETE SURVEYING AND GLOBAL POSITIONING

2133 SOUTH BELLAIRE STREET #14
DENVER COLORADO 80222
(303) 756-3695



MULTI-WELL PLAN
Page 1

CSL# 11104-02

DATE OF FIELD WORK:

14 JANUARY, 2011

DATE OF DRAWING:

24 JANUARY, 2011

WETCO FARMS I-4 DIRECTIONAL WELL

NE SW SEC. 4, T4N, R63W

BONANZA CREEK ENERGY OPERATING COMPANY, LLC

WELD COUNTY, COLORADO