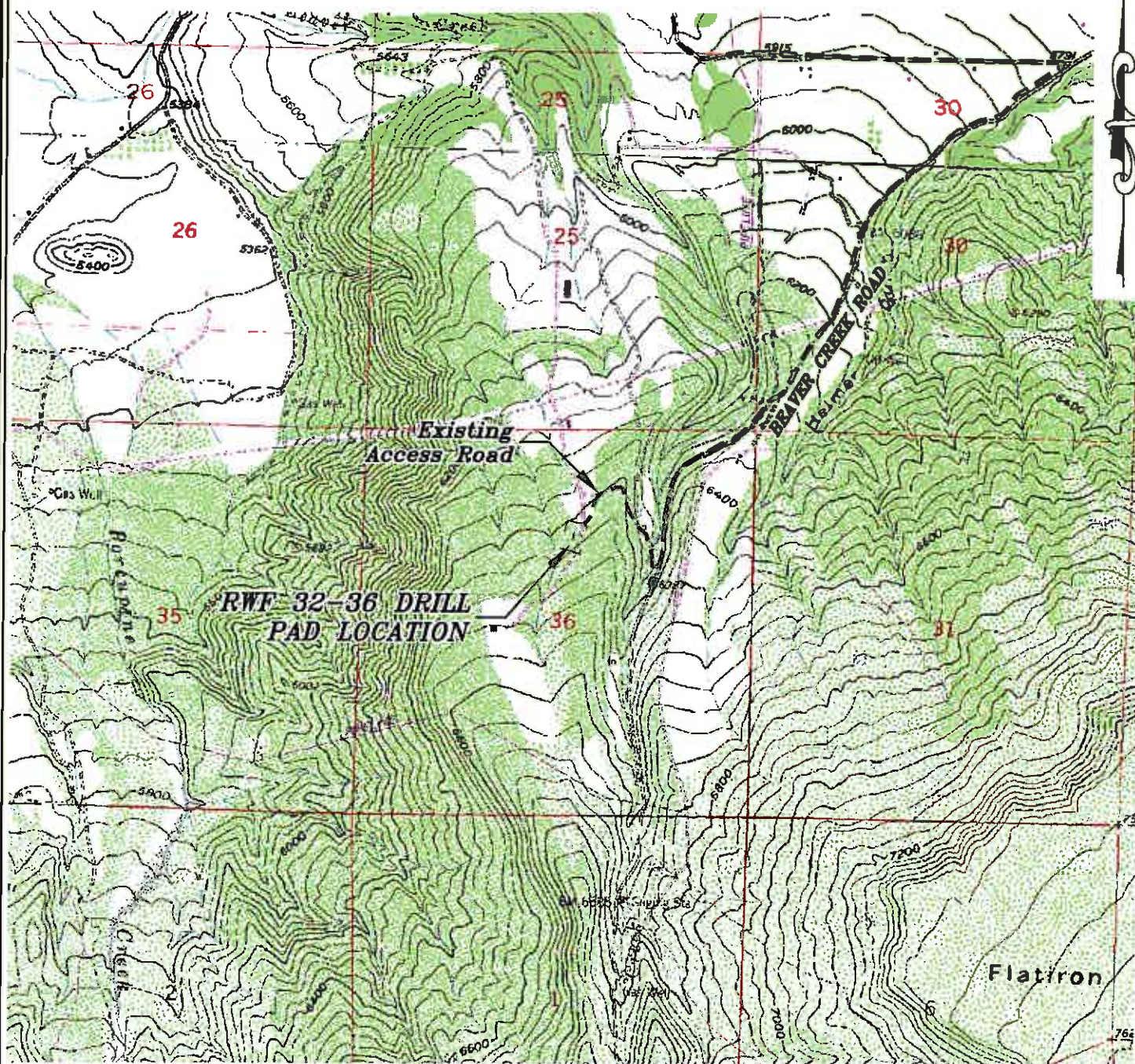


Section 36
T. 6 S., R 94 W



1000 0 2000

GRAPHIC SCALE IN FEET
1 INCH = 2000 FEET

ACCESS DESCRIPTION:

FROM THE INTERSECTION OF STATE HIGHWAY 6 AND COUNTY ROAD 323 NORTH OF RULISON, PROCEED SOUTHERLY ALONG COUNTY ROAD 323 ± 1.1 MILES TO THE INTERSECTION WITH COUNTY ROAD 309, PROCEED LEFT IN AN EASTERLY DIRECTION ± 2.3 MILES TO THE INTERSECTION WITH COUNTY ROAD 320, PROCEED RIGHT IN AN EASTERLY DIRECTION ± 6.1 MILES TO THE INTERSECTION WITH COUNTY ROAD 317 (Beaver Creek Road), PROCEED RIGHT IN A SOUTHERLY DIRECTION ± 1.7 MILES TO THE INTERSECTION WITH A DIRT/GRAVEL ROAD, PROCEED RIGHT IN AN WESTERLY DIRECTION ± 0.4 MILES TO THE EXISTING RWF 32-36 DRILL PAD LOCATION, AS SHOWN HEREON.

Construction Plan Prepared for:

Williams. Williams Production, RMT

SCALE: 1" = 2000'
DATE: 3/29/11
PLAT: 5 of 7
PROJECT: Williams Valley
DFT: cws

RWF 32-36 Drill Pad - Plat 5
ACCESS ROAD MAP

111 West Third Street
P.O. Box 1111
P.O. Box 1111
P.O. Box 1111

BOOKCLIFF
Survey Services, Inc.