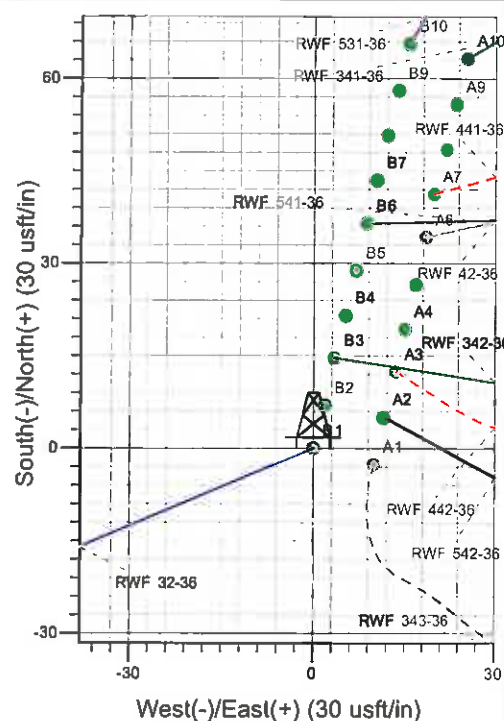
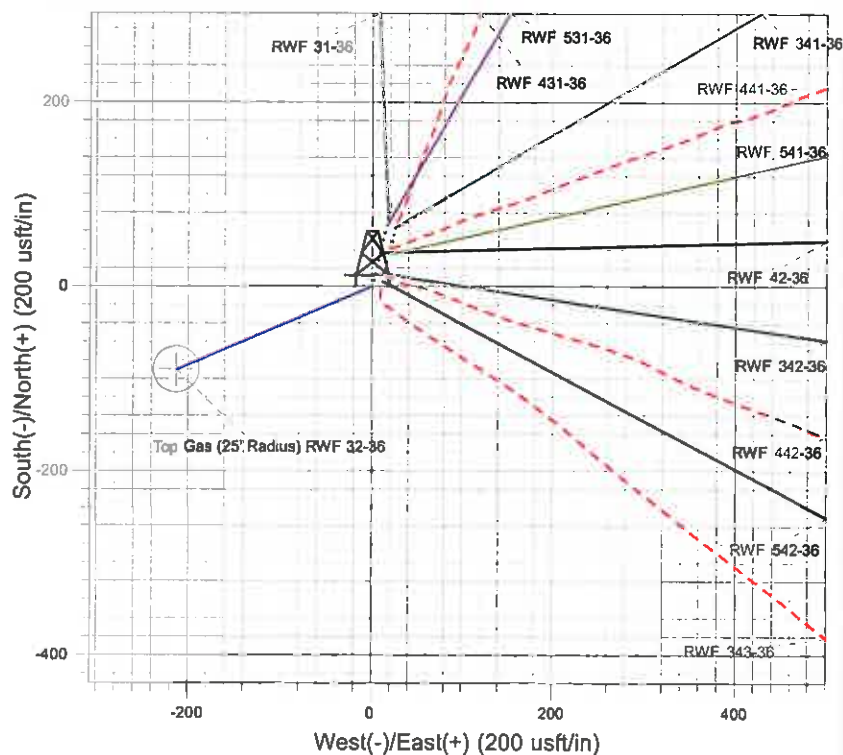
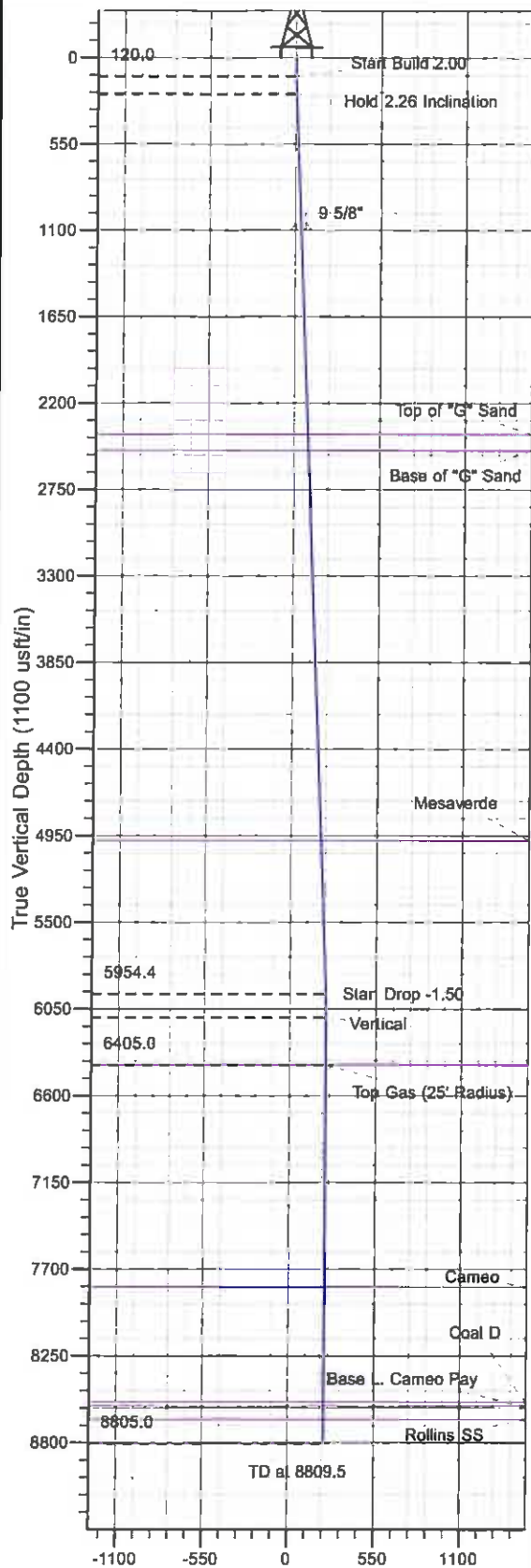




Well Name: RWF 32-36
 Surface Location: RWF 32-36 Pad
 North American Datum 1983, US State Plane 1983, Colorado Central Zone
 Ground Elevation: 6424.0
 +N/-S +E/-W Northing Easting Latitude Longitude Slot
 0.0 0.0 1610152.70 2340881.70 39° 29' 7.378 N 107° 50' 7.957 W B1
 KELLY BUSHING @ 6448.0usft (H&P 271 (24' RKB) kjs)



Project: RU 36-06S-094W
 Site: RWF 32-36 Pad
 Well: RWF 32-36
 Plan #4 02Mar11 kjs



M Azimuths to True North
 Magnetic North: 10.62°
 Magnetic Field
 Strength: 52566.3nT
 Dip Angle: 65.85°
 Date: 9/2/2008
 Model: IGRF2005-10

ANNOTATIONS

| TVD | MD | Inc | Azi | +N/-S | +E/-W | VSec | Departure | Annotation |
|--------|--------|------|--------|-------|--------|-------|-----------|-----------------------|
| 120.0 | 120.0 | 0.00 | 0.00 | 0.0 | 0.0 | 0.0 | 0.0 | Start Build 2.00 |
| 232.9 | 233.0 | 2.26 | 247.14 | -0.9 | -2.1 | 2.2 | 2.2 | Hold 2.26 Inclination |
| 5954.4 | 5958.9 | 2.26 | 247.14 | -88.5 | -210.0 | 227.9 | 227.9 | Start Drop -1.50 |
| 6105.0 | 6109.5 | 0.00 | 0.00 | -89.7 | -212.8 | 230.9 | 230.9 | Vertical |
| 6405.0 | 6409.5 | 0.00 | 0.00 | -89.7 | -212.8 | 230.9 | 230.9 | Top Gas |
| 8805.0 | 8809.5 | 0.00 | 0.00 | -89.7 | -212.8 | 230.9 | 230.9 | TD at 8809.5 |

Vertical Section at 247.14° (1100 usft/in)

PICEANCE VLY NAD 83

RU 36-06S-094W

RWF 32-36 Pad

RWF 32-36 - Slot B1

Wellbore #1

Plan: Plan #4 02Mar11 kjs

Standard Planning Report - Geographic

27 April, 2011

Williams
Planning Report - Geographic

| | | | |
|-----------|------------------------|------------------------------|--|
| Database: | Compass R5000 WIN AUTH | Local Co-ordinate Reference: | Well RWF 32-36 - Slot B1 |
| Company: | PICEANCE VLY NAD 83 | TVD Reference: | KELLY BUSHING @ 6448.0usft (H&P 271 (24' RKB) kjs) |
| Project: | RU 36-06S-094W | MD Reference: | KELLY BUSHING @ 6448.0usft (H&P 271 (24' RKB) kjs) |
| Site: | RWF 32-36 Pad | North Reference: | True |
| Well: | RWF 32-36 | Survey Calculation Method: | Minimum Curvature |
| Wellbore: | Wellbore #1 | | |
| Design: | Plan #4 02Mar11 kjs | | |

| | | | |
|-------------|-------------------------------------|---------------|-----------------------------|
| Project | RU 36-06S-094W, Garfield County, CO | | |
| Map System: | US State Plane 1983 | System Datum: | Mean Sea Level |
| Geo Datum: | North American Datum 1983 | | |
| Map Zone: | Colorado Central Zone | | Using geodetic scale factor |

| | | | | | |
|-----------------------|----------|---------------|-------------------|-------------------|------------------|
| Site | | RWF 32-36 Pad | | | |
| Site Position: | | Northing: | 1,610,174.30 usft | Latitude: | 39° 29' 7.596 N |
| From: | Map | Easting: | 2,340,897.80 usft | Longitude: | 107° 50' 7.759 W |
| Position Uncertainty: | 0.0 usft | Slot Radius: | 13.200 in | Grid Convergence: | -1.473 ° |

| | | | | | | |
|----------------------|---------------------|----------|---------------------|-------------------|---------------|------------------|
| Well | RWF 32-36 - Slot B1 | | | | | |
| Well Position | +N/-S | 0.0 usft | Northing: | 1,610,152.70 usft | Latitude: | 39° 29' 7.378 N |
| | +E/-W | 0.0 usft | Easting: | 2,340,881.70 usft | Longitude: | 107° 50' 7.957 W |
| Position Uncertainty | | 0.0 usft | Wellhead Elevation: | | Ground Level: | 6,424.0 usft |

| | | | | | |
|-----------|-------------|-------------|-----------------|---------------|---------------------|
| Wellbore | Wellbore #1 | | | | |
| Magnetics | Model Name | Sample Date | Declination (°) | Dip Angle (°) | Field Strength (nT) |
| | IGRF2005-10 | 9/2/2008 | 10.618 | 65.845 | 52,566 |

| | | | | |
|-------------------|-------------------------|--------------|---------------|---------------|
| Design | Plan #4 02Mar11 kjs | | | |
| Audit Notes: | | | | |
| Version: | Phase: | PLAN | Tie On Depth: | 0.0 |
| Vertical Section: | Depth From (TVD) (usft) | +N/-S (usft) | +E/-W (usft) | Direction (°) |
| | 0.0 | 0.0 | 0.0 | 247.14 |

| Plan Sections | | | | | | | | | | |
|-----------------------|-----------------|-------------|-----------------------|--------------|--------------|-------------------------|------------------------|-----------------------|---------|----------------------|
| Measured Depth (usft) | Inclination (°) | Azimuth (°) | Vertical Depth (usft) | +N/-S (usft) | +E/-W (usft) | Dogleg Rate (°/100usft) | Build Rate (°/100usft) | Turn Rate (°/100usft) | TFO (°) | Target |
| 0.0 | 0.00 | 0.00 | 0.0 | 0.0 | 0.0 | 0.00 | 0.00 | 0.00 | 0.000 | |
| 120.0 | 0.00 | 0.00 | 120.0 | 0.0 | 0.0 | 0.00 | 0.00 | 0.00 | 0.000 | |
| 233.0 | 2.26 | 247.14 | 232.9 | -0.9 | -2.1 | 2.00 | 2.00 | 0.00 | 247.140 | |
| 5,958.9 | 2.26 | 247.14 | 5,954.4 | -88.5 | -210.0 | 0.00 | 0.00 | 0.00 | 0.000 | |
| 6,109.5 | 0.00 | 0.00 | 6,105.0 | -89.7 | -212.8 | 1.50 | -1.50 | 0.00 | 180.000 | |
| 6,409.5 | 0.00 | 0.00 | 6,405.0 | -89.7 | -212.8 | 0.00 | 0.00 | 0.00 | 0.000 | Top Gas (25' Radius) |
| 6,809.5 | 0.00 | 0.00 | 6,805.0 | -89.7 | -212.8 | 0.00 | 0.00 | 0.00 | 0.000 | |

Williams
Planning Report - Geographic

| | | | |
|-----------|------------------------|------------------------------|--|
| Database: | Compass R5000 WIN AUTH | Local Co-ordinate Reference: | Well RWF 32-36 - Slot B1 |
| Company: | PICEANCE VLY NAD 83 | TVD Reference: | KELLY BUSHING @ 6448.0usft (H&P 271 (24' RKB) kjs) |
| Project: | RU 36-06S-094W | MD Reference: | KELLY BUSHING @ 6448.0usft (H&P 271 (24' RKB) kjs) |
| Site: | RWF 32-36 Pad | North Reference: | True |
| Well: | RWF 32-36 | Survey Calculation Method: | Minimum Curvature |
| Wellbore: | Wellbore #1 | | |
| Design: | Plan #4 02Mar11 kjs | | |

Planned Survey

| Measured Depth (usft) | Inclination (") | Azimuth (") | Vertical Depth (usft) | +N/-S (usft) | +E/-W (usft) | Map Northing (usft) | Map Easting (usft) | Latitude | Longitude |
|----------------------------------|-----------------|-------------|-----------------------|--------------|--------------|---------------------|--------------------|-----------------|-------------------|
| 0.0 | 0.00 | 0.00 | 0.0 | 0.0 | 0.0 | 1,610,152.70 | 2,340,881.70 | 39° 29' 7.378 N | 107° 50' 7.957 W |
| 120.0 | 0.00 | 0.00 | 120.0 | 0.0 | 0.0 | 1,610,152.70 | 2,340,881.70 | 39° 29' 7.378 N | 107° 50' 7.957 W |
| Start Build 2.00 | | | | | | | | | |
| 233.0 | 2.26 | 247.14 | 232.9 | -0.9 | -2.1 | 1,610,151.88 | 2,340,879.63 | 39° 29' 7.370 N | 107° 50' 7.983 W |
| Hold 2.26 Inclination | | | | | | | | | |
| 1,100.7 | 2.26 | 247.14 | 1,100.0 | -14.2 | -33.6 | 1,610,139.41 | 2,340,847.78 | 39° 29' 7.239 N | 107° 50' 8.385 W |
| 9 5/8" | | | | | | | | | |
| 2,401.7 | 2.28 | 247.14 | 2,400.0 | -34.1 | -80.8 | 1,610,120.71 | 2,340,800.03 | 39° 29' 7.042 N | 107° 50' 8.988 W |
| Top of "G" Sand | | | | | | | | | |
| 2,501.8 | 2.26 | 247.14 | 2,500.0 | -35.6 | -84.5 | 1,610,119.27 | 2,340,796.35 | 39° 29' 7.027 N | 107° 50' 9.034 W |
| Base of "G" Sand | | | | | | | | | |
| 4,983.7 | 2.26 | 247.14 | 4,980.0 | -73.8 | -174.6 | 1,610,083.60 | 2,340,705.26 | 39° 29' 6.651 N | 107° 50' 10.184 W |
| Mesaverde | | | | | | | | | |
| 5,958.9 | 2.26 | 247.14 | 5,954.4 | -88.5 | -210.0 | 1,610,069.58 | 2,340,669.47 | 39° 29' 6.503 N | 107° 50' 10.636 W |
| Start Drop -1.50 | | | | | | | | | |
| 6,109.5 | 0.00 | 0.00 | 6,105.0 | -89.7 | -212.8 | 1,610,068.50 | 2,340,666.70 | 39° 29' 6.492 N | 107° 50' 10.671 W |
| Vertical | | | | | | | | | |
| 6,409.5 | 0.00 | 0.00 | 6,405.0 | -89.7 | -212.8 | 1,610,068.50 | 2,340,666.70 | 39° 29' 6.492 N | 107° 50' 10.671 W |
| Top Gas - Approx. Top Gas | | | | | | | | | |
| 7,819.5 | 0.00 | 0.00 | 7,815.0 | -89.7 | -212.8 | 1,610,068.50 | 2,340,666.70 | 39° 29' 6.492 N | 107° 50' 10.671 W |
| Cameo | | | | | | | | | |
| 8,549.5 | 0.00 | 0.00 | 8,545.0 | -89.7 | -212.8 | 1,610,068.50 | 2,340,666.70 | 39° 29' 6.492 N | 107° 50' 10.671 W |
| Coal D | | | | | | | | | |
| 8,574.5 | 0.00 | 0.00 | 8,570.0 | -89.7 | -212.8 | 1,610,068.50 | 2,340,666.70 | 39° 29' 6.492 N | 107° 50' 10.671 W |
| Base L. Cameo Pay | | | | | | | | | |
| 8,659.5 | 0.00 | 0.00 | 8,655.0 | -89.7 | -212.8 | 1,610,068.50 | 2,340,666.70 | 39° 29' 6.492 N | 107° 50' 10.671 W |
| Rollins SS | | | | | | | | | |
| 8,809.5 | 0.00 | 0.00 | 8,805.0 | -89.7 | -212.8 | 1,610,068.50 | 2,340,666.70 | 39° 29' 6.492 N | 107° 50' 10.671 W |
| TD at 8809.5 - TD | | | | | | | | | |

Design Targets

| Target Name - hit/miss target - Shape | Dip Angle (") | Dip Dir. (") | TVD (usft) | +N/-S (usft) | +E/-W (usft) | Northing (usft) | Easting (usft) | Latitude | Longitude |
|--|---------------|--------------|------------|--------------|--------------|-----------------|----------------|-----------------|-------------------|
| Top Gas (25' Radius) R1 - plan hits target center - Circle (radius 25.0) | 0.00 | 0.00 | 6,405.0 | -89.7 | -212.8 | 1,610,068.50 | 2,340,666.70 | 39° 29' 6.492 N | 107° 50' 10.671 W |

Casing Points

| Measured Depth (usft) | Vertical Depth (usft) | Name | Casing Diameter (in) | Hole Diameter (in) |
|-----------------------|-----------------------|--------|----------------------|--------------------|
| 1,100.7 | 1,100.0 | 9 5/8" | 9.625 | 12.250 |

Williams
Planning Report - Geographic

| | | | |
|-----------|------------------------|------------------------------|--|
| Database: | Compass R5000 WIN AUTH | Local Co-ordinate Reference: | Well RWF 32-36 - Slot B1 |
| Company: | PICEANCE VLY NAD 83 | TVD Reference: | KELLY BUSHING @ 6448.0usft (H&P 271 (24' RKB) kjs) |
| Project: | RU 36-06S-094W | MD Reference: | KELLY BUSHING @ 6448.0usft (H&P 271 (24' RKB) kjs) |
| Site: | RWF 32-36 Pad | North Reference: | True |
| Well: | RWF 32-36 | Survey Calculation Method: | Minimum Curvature |
| Wellbore: | Wellbore #1 | | |
| Design: | Plan #4 02Mar11 kjs | | |

| Formations | | | | | | |
|-----------------------|-----------------------|-------------------|-----------|---------|-------------------|--|
| Measured Depth (usft) | Vertical Depth (usft) | Name | Lithology | Dip (") | Dip Direction (") | |
| 2,401.7 | 2,400.0 | Top of "G" Sand | | | | |
| 2,501.8 | 2,500.0 | Base of "G" Sand | | | | |
| 4,983.7 | 4,980.0 | Mesaverde | | | | |
| 6,409.5 | 6,405.0 | Approx. Top Gas | | | | |
| 7,819.5 | 7,815.0 | Cameo | | | | |
| 8,549.5 | 8,545.0 | Coal D | | | | |
| 8,574.5 | 8,570.0 | Base L. Cameo Pay | | | | |
| 8,659.5 | 8,655.0 | Rollins SS | | | | |
| 8,809.5 | 8,805.0 | TD | | | | |

| Plan Annotations | | | | | |
|-----------------------|-----------------------|-------------------|--------------|-----------------------|--|
| Measured Depth (usft) | Vertical Depth (usft) | Local Coordinates | | | |
| | | +N/-S (usft) | +E/-W (usft) | Comment | |
| 120.0 | 120.0 | 0.0 | 0.0 | Start Build 2.00 | |
| 233.0 | 232.9 | -0.9 | -2.1 | Hold 2.26 Inclination | |
| 5,958.9 | 5,954.4 | -88.5 | -210.0 | Start Drop -1.50 | |
| 6,109.5 | 6,105.0 | -89.7 | -212.8 | Vertical | |
| 6,409.5 | 6,405.0 | -89.7 | -212.8 | Top Gas | |
| 8,809.5 | 8,805.0 | -89.7 | -212.8 | TD at 8809.5 | |