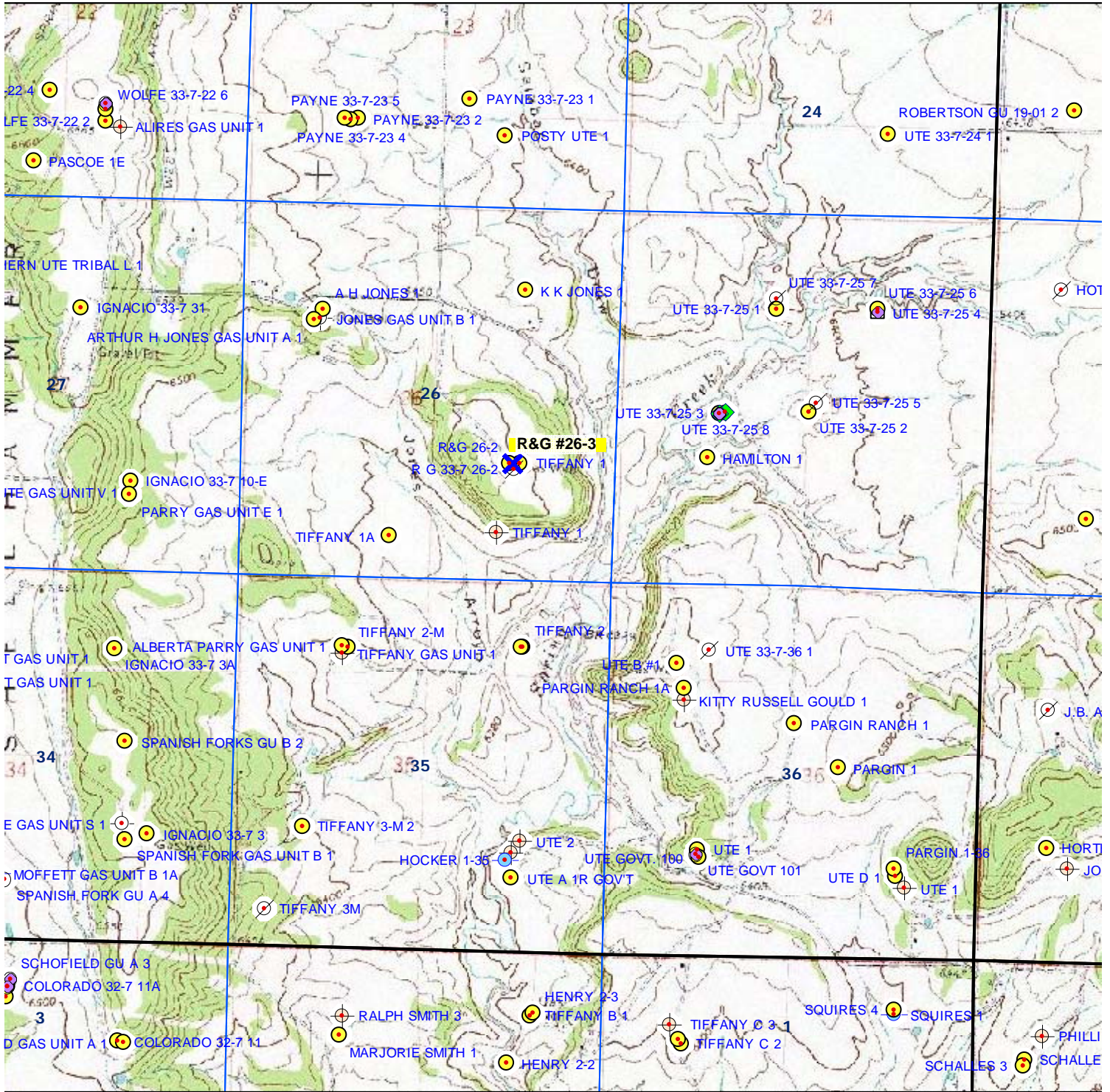
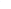








TOPOGRAPHIC MAP



-  Proposed Well
-  Producing
-  Plugged & Abandoned
-  Abandoned Location
-  Shut-In
-  Pending Permits
-  Permits

R&G #26-3
1,600' FSL & 1,442' FEL
NWSE SEC. 26, T33N, R7W, N.M.P.M.
LA PLATA COUNTY, CO



Scale 1" = 2,000'