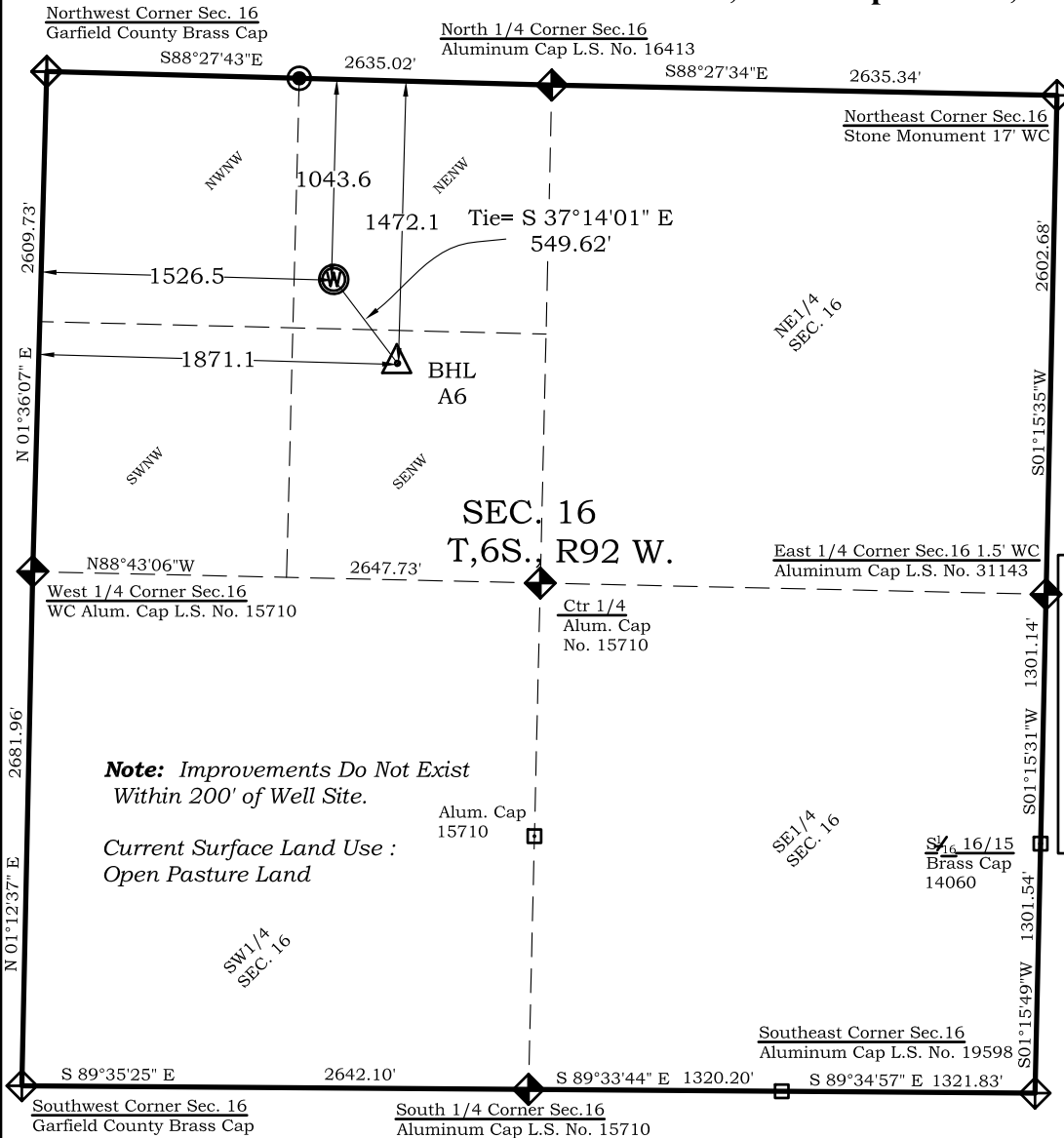


# MCPHERSON A6

## Well Location Plat

Section 16, Township 6 South, Range 92 West



Graphic Scale in Feet  
1" = 1000'

### Legend

- Field Surveyed Section Corner
- Field Surveyed Quarter Corner
- Calculated Section Corner Location
- Field Surveyed 1/6 Corner

### Bottom: McPherson A6

1472' FNL  
1871' FWL  
**NAD83**  
Lat: 39.529937940°N  
Long: 107.674601956°W  
**NAD27**  
Lat: 39.529957401°N  
Long: 107.673986400°W

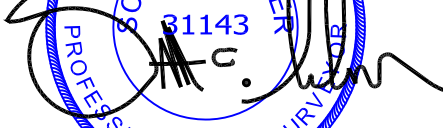
### Surface: McPherson A6

1044' FNL  
1526' FWL  
Gnd El= 5448.3  
Pad El= 5448.5  
**NAD83**  
Lat: 39.531111302°N  
Long: 107.675826211°W  
**NAD27**  
Lat: 39.531130764°N  
Long: 107.675210593°W  
UTM 13 NORTH  
**NAD 1983**  
NORTHING  
14367217.889  
EASTING  
885896.079

Prepared For Antero Resources:  
Proposed MCPHERSON A6 Well Situate in The NW1/4  
Section 16, Township 6 South, Range 92 West of the 6th.  
Principal Meridian, County of Garfield, State of  
Colorado.

### SURVEYOR'S CERTIFICATE

I, SCOTT E. AIBNER, A REGISTERED LAND SURVEYOR, LICENSED UNDER THE LAWS OF THE STATE OF COLORADO DO HEREBY CERTIFY THAT THE SURVEY SHOWN HEREON WAS PREPARED BY RIVER VALLEY SURVEY, INC., FOR ANTERO RESOURCES, BY MEANS OF A DIRECT SUPERVISION AND HAS BEEN STAKED ON THE GROUND AS SHOWN ON THE PLAT AND THAT THIS PLAT IS A TRUE REPRESENTATION THEREOF.

BY:   
SCOTT E. AIBNER, COLORADO REG. NO. 31143

### Notes:

- LATITUDE AND LONGITUDE COORDINATES ARE DIFFERENTIALLY CORRECTED AND BASED ON PUBLISHED NGS CONTROL STATION "WDP-5". SYSTEM: UTM ZONE: 13 NORTH DATUM: NAD 1983 (CONUS)
- ELEVATIONS ARE BASED ON NAVD OF 1983.
- ALL BOTTOM AND TOP HOLE LOCATIONS ARE MEASURED 90 DEGREES FROM SECTION LINE.
- USGS QUADRANGLE MAP "GIBSON GULCH".
- CURRENT SURFACE LAND USE: OPEN RANGE LAND.
- PDOP AT THE TIME OF LOCATION OF SURFACE WELL = 2.5



**River Valley Survey, Inc.**  
110 East 3rd. Street, Suite 213  
Rifle, Colorado 81650  
Ph: 970-379-7846

Project: MCPHERSON A PAD

Field Date: 01-04-11

Date: 04-21-11

Scale: 1" = 1000'

Sheet: 1 of 11

Well Location Plat  
Prepared For Antero Resources

Situate In:  
NW1/4 Section 16, T6S., R. 92 W. of the  
6th P.M., Garfield County, Colorado

