

Mesa Wireline

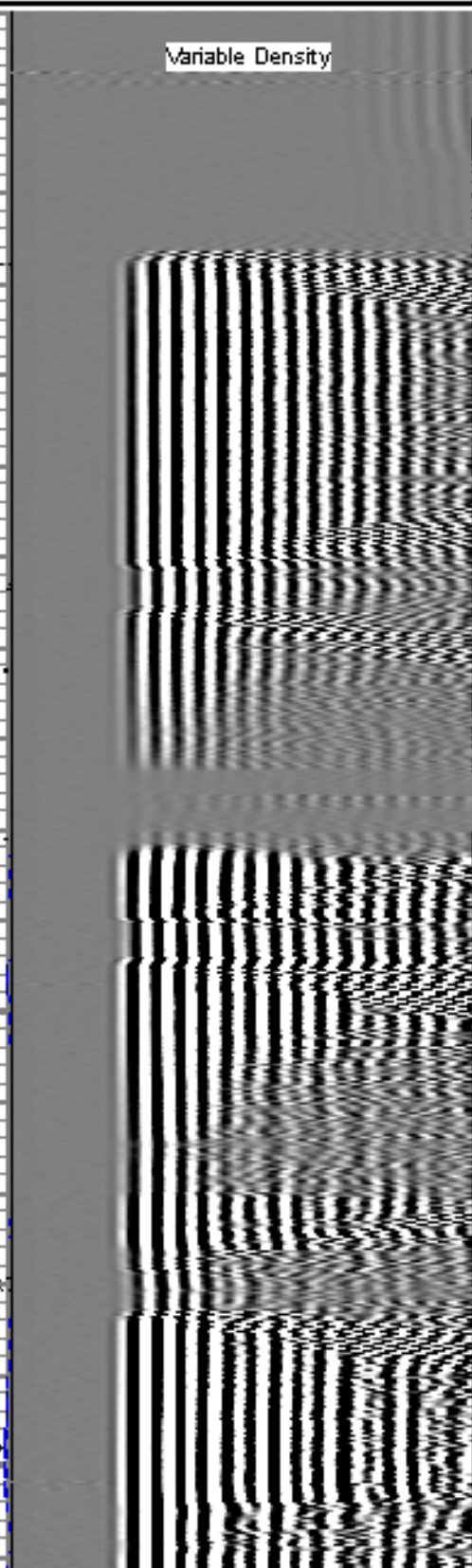
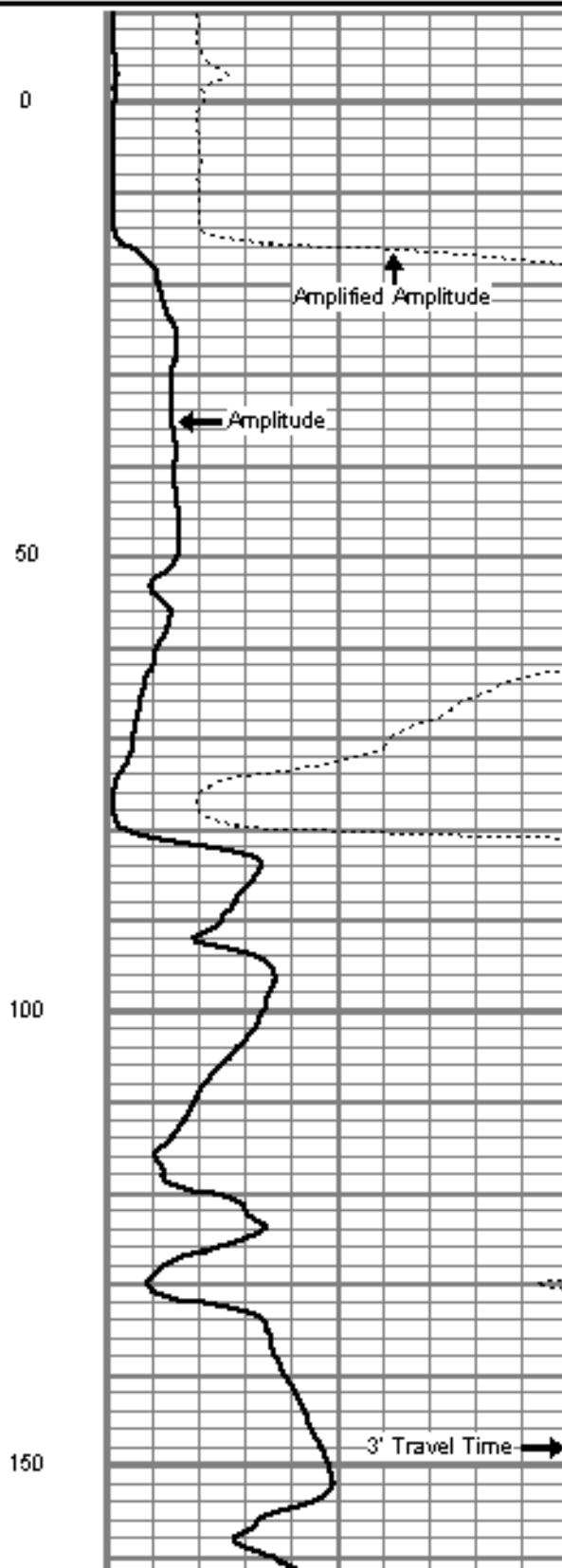
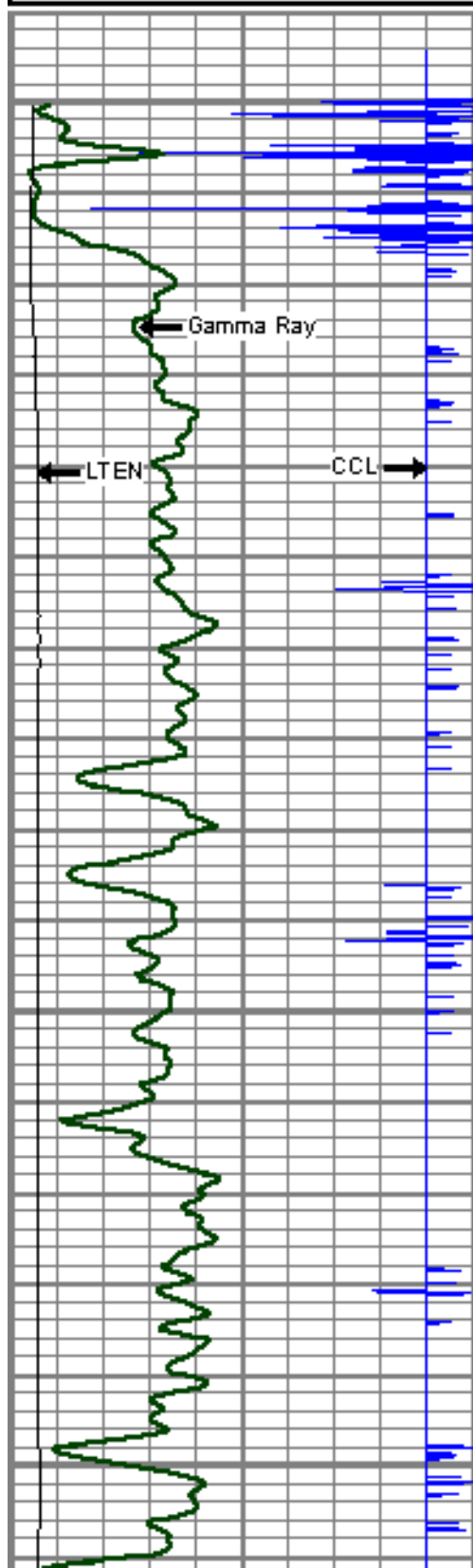
<<< Fold Here >>>
All interpretations are opinions based on inferences from electrical or other measurements and we cannot and do not guarantee the accuracy or correctness of any interpretation, and we shall not, except in the case of gross or willful negligence on our part, be liable or responsible for any loss, costs, damages, or expenses incurred or sustained by anyone resulting from any interpretation made by any of our officers, agents or employees. These interpretations are also subject to our general terms and conditions set out in our current Price Schedule.
Comments
LOG NOT CORRELATED TO ANY OTHER LOGS
WE APPRECIATE YOUR BUSINESS, MESA WIRELINE LLC, AULT, CO. (970) 834-2495

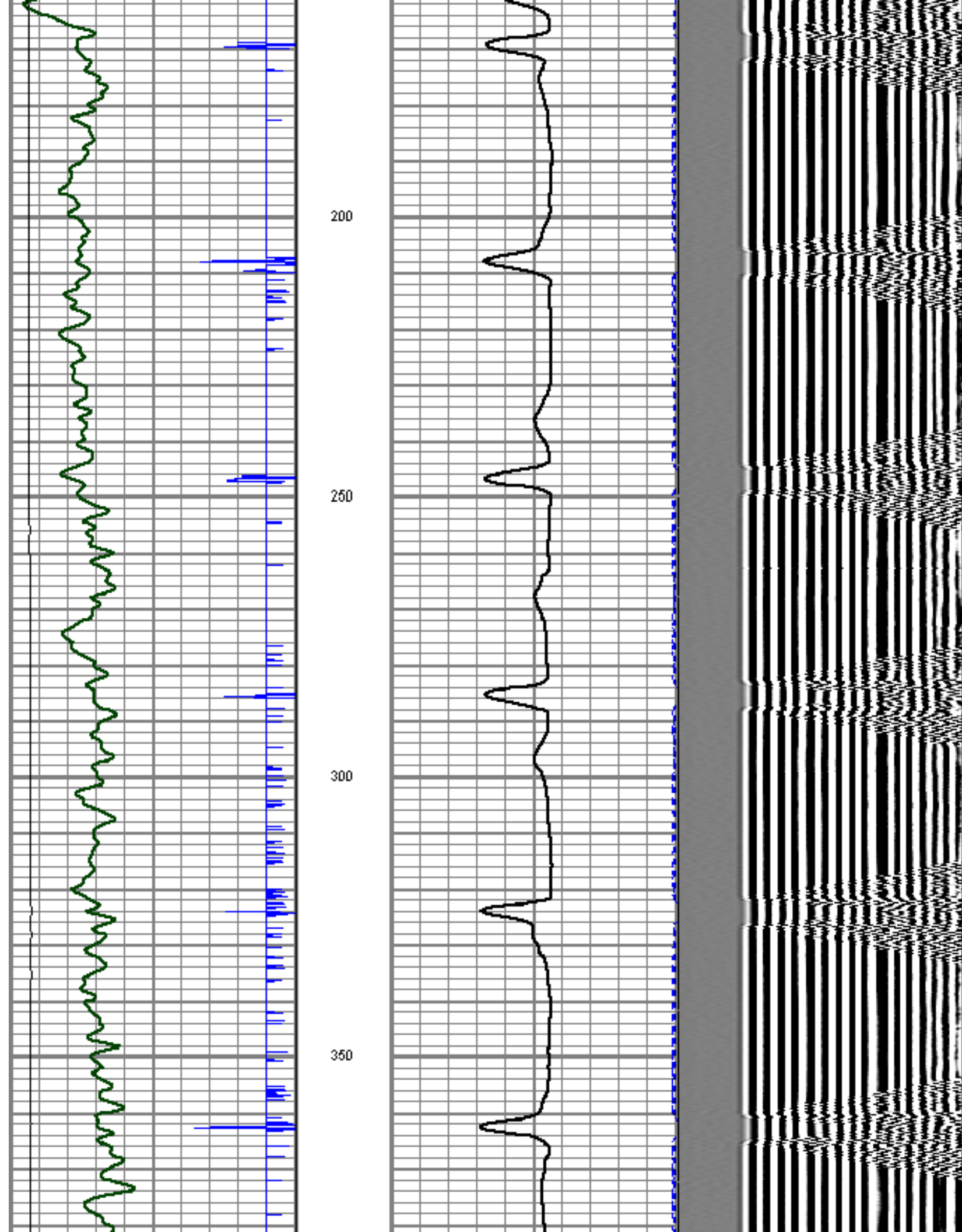


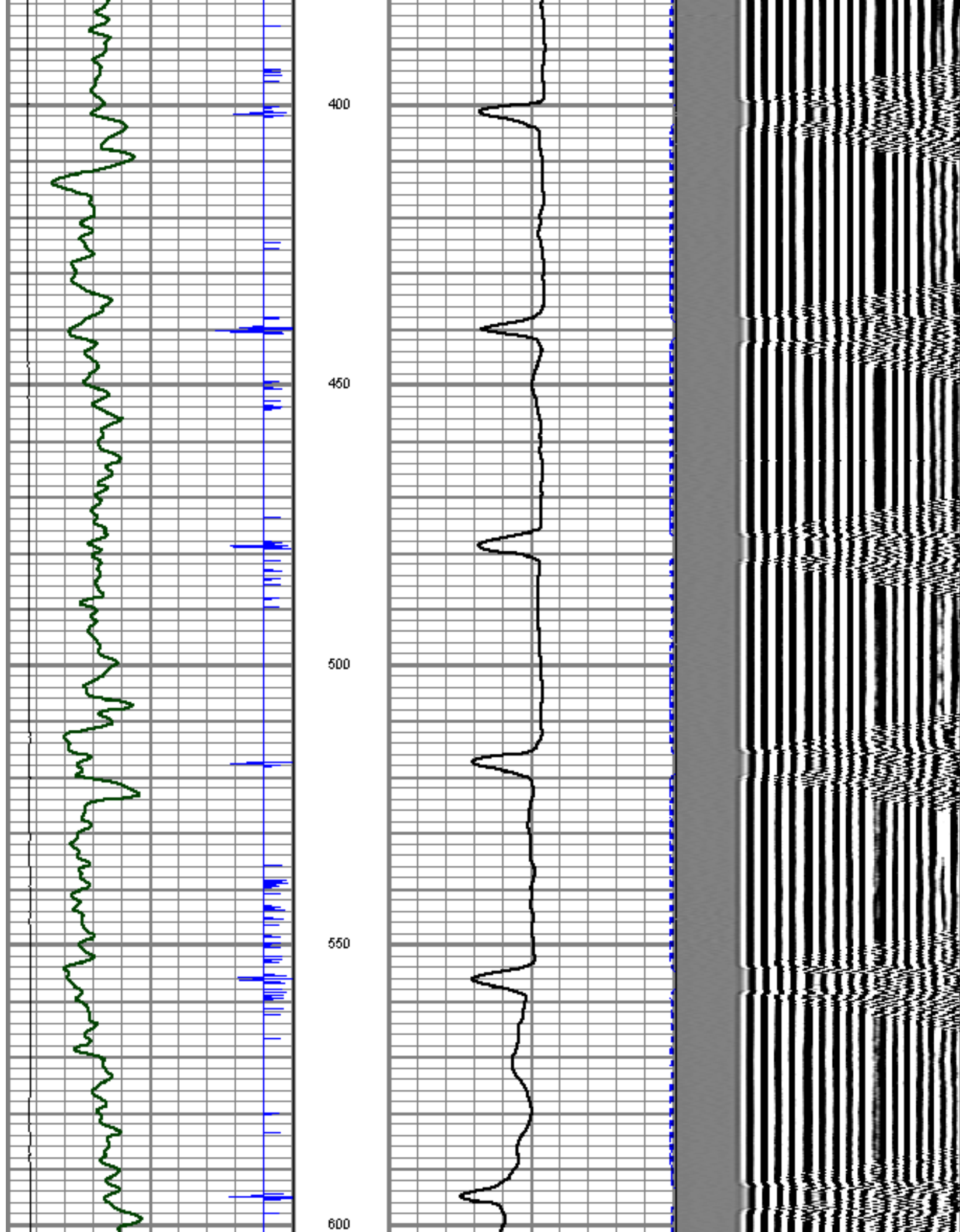
Database File: foster 6-4-5.db
Dataset Pathname: pass3
Presentation Format: cbl01
Dataset Creation: Thu Apr 07 02:50:20 2011 by Log SCH 110223
Charted by: Depth in Feet scaled 1:240

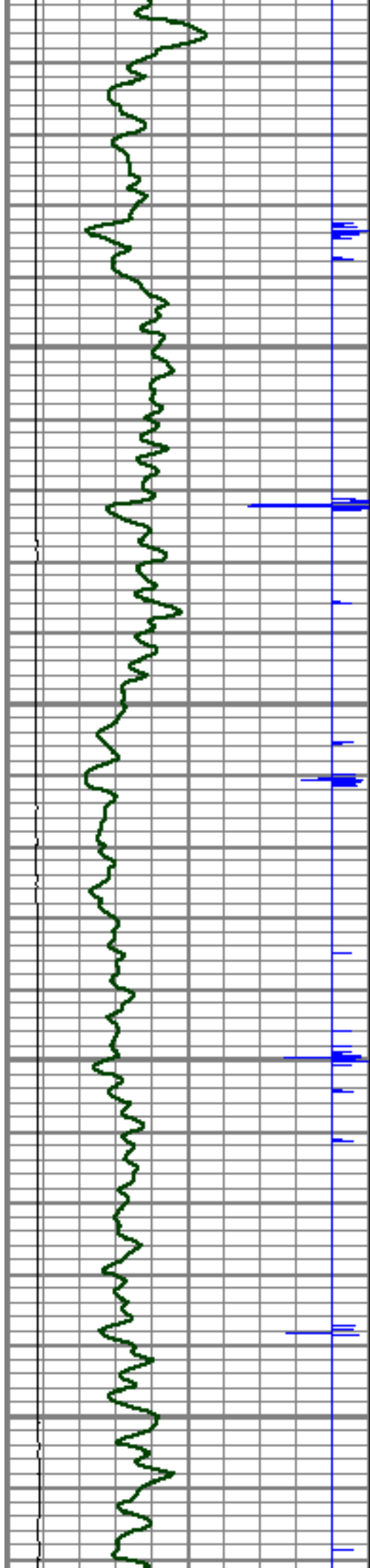
9	Collar Locator	-1
0	Gamma Ray (GAPI)	150
0	LTEN (lb)	4000

0	Amplified Amplitude (mV)	10	200	Variable Density	1200
0	Amplitude (mV)	100			
0	Travel Time (usec)	340			







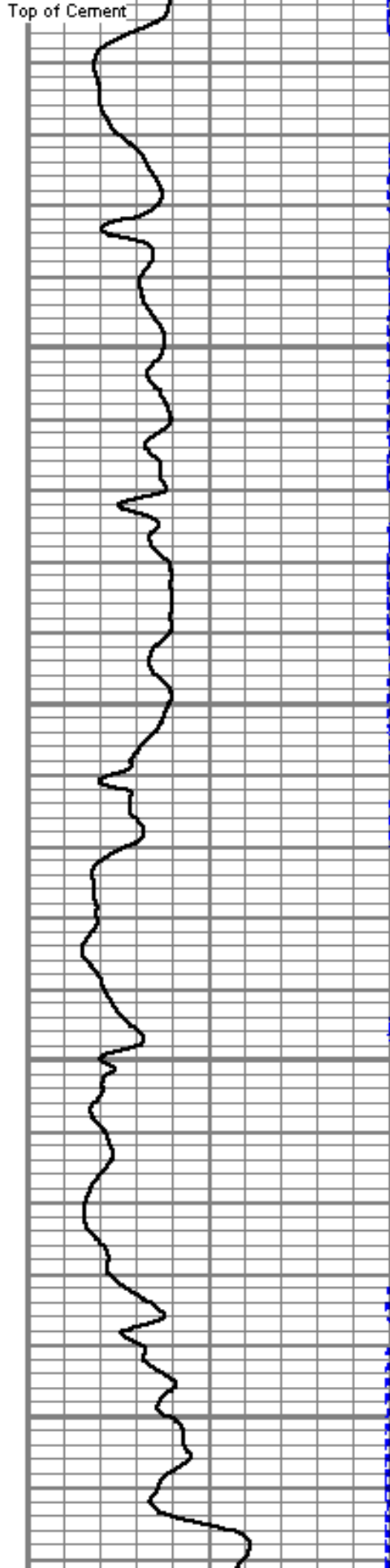


650

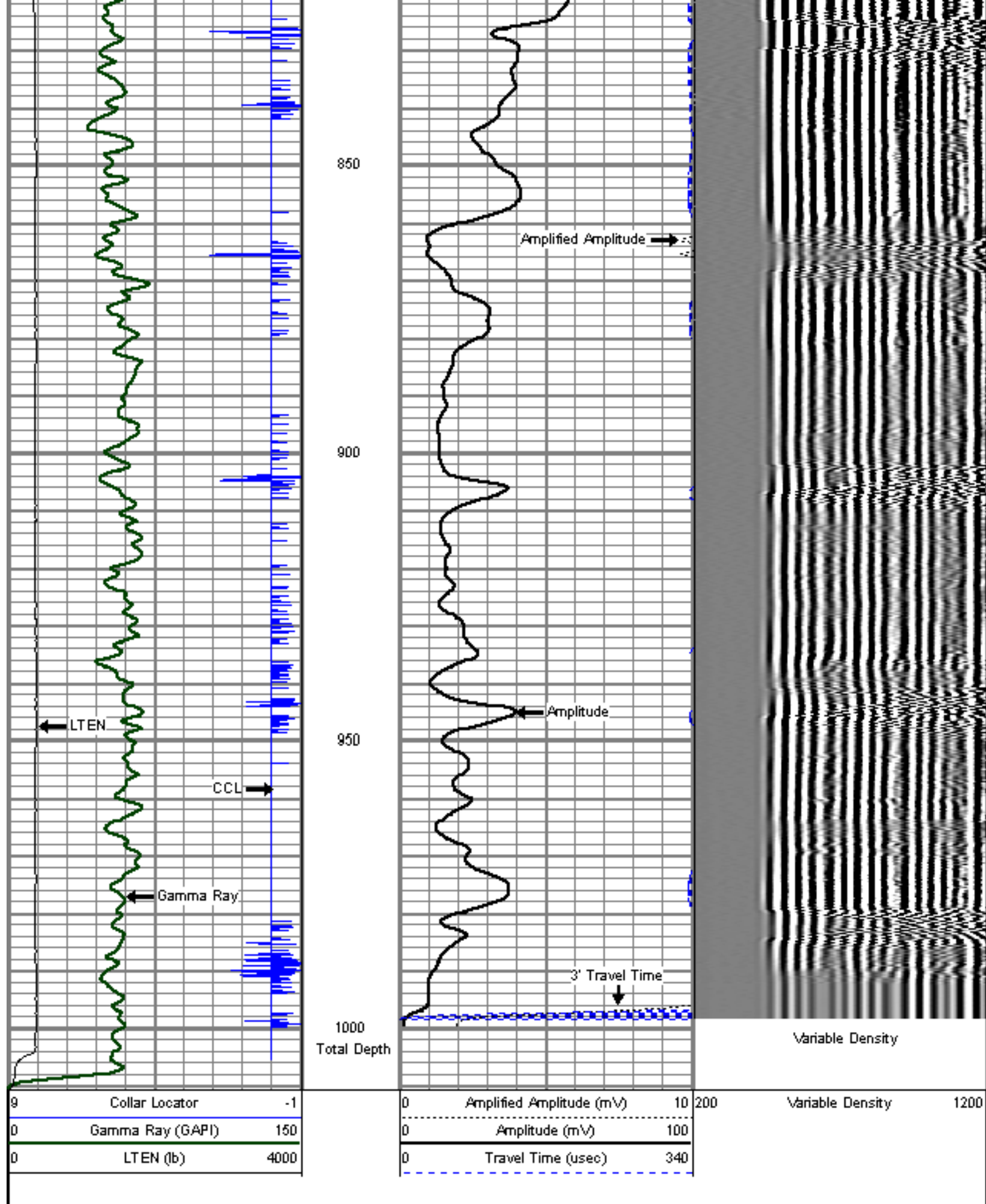
700

750

800



Top of Cement





Company	ENCANA OIL & GAS INC. (USA)
Well	FOSTER 6-4-5
Field	WATTENBERG
County	WELD
State	COLORADO