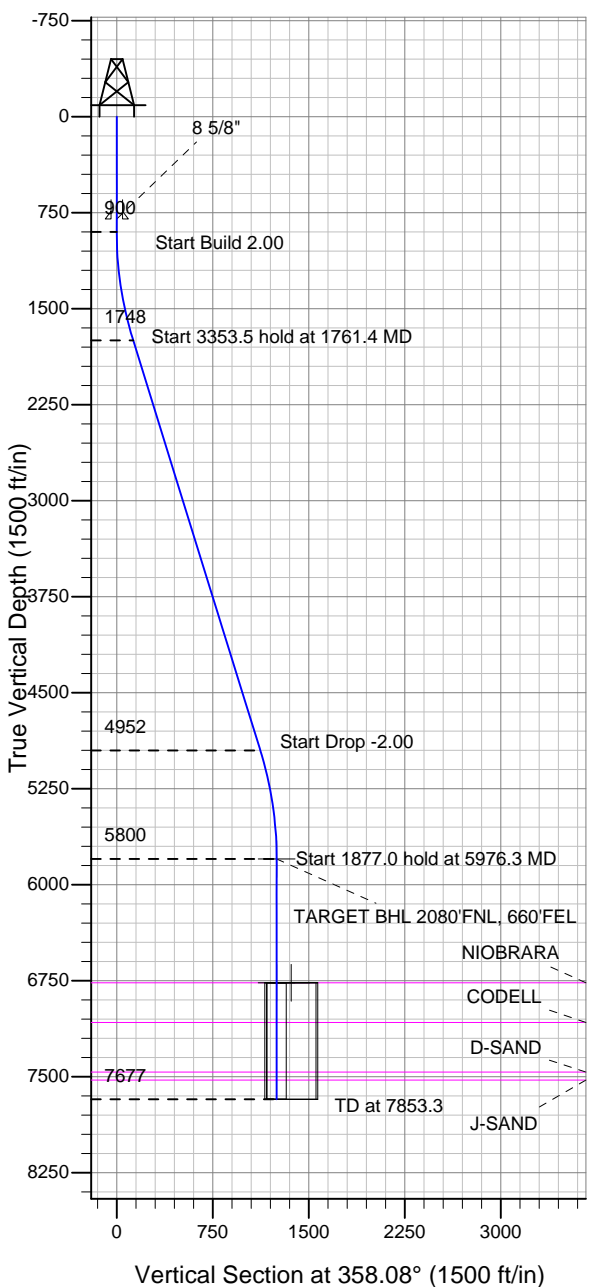


# ENSIGN

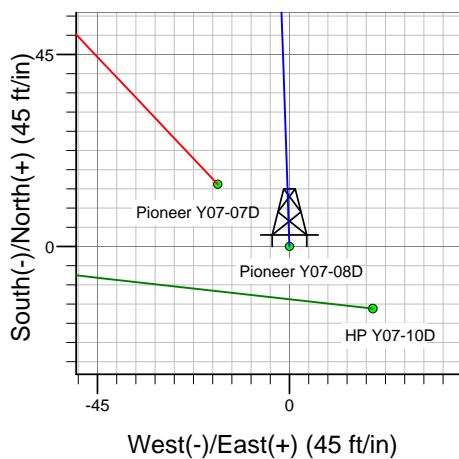
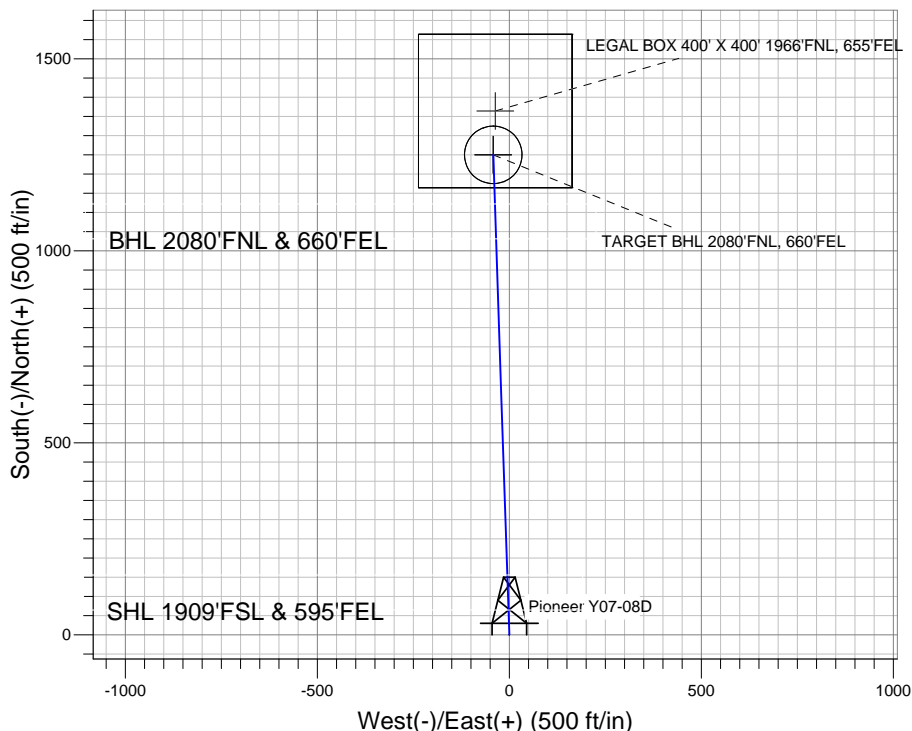
## Directional

### Well Name: Pioneer Y07-08D

Surface Location: Pioneer Y07-08D Pad Sec.7-T2N-R64W  
 North American Datum 1983 US State Plane 1983 Colorado Northern Zone  
 Ground Elevation: 4860.0  
 +N/-S +E/-W Northing Easting Latitude Longitude Slot  
 0.0 0.0 1299130.05 3255209.75 40.150900 -104.587000  
 Original Well Elev WELL @ 4873.0ft (Original Well Elev)



### NOBLE ENERGY INC WELD COUNTY CO



Pioneer Y07-08D Pad Sec.7-T2N-R64W  
 Pioneer Y07-08D  
 Noble Pioneer Y07-08D Plan #1 (4-07-11)  
 10:51, April 15 2011



Azimuths to True North  
 Magnetic North: 8.77°

Magnetic Field  
 Strength: 53037.0snT  
 Dip Angle: 66.88°  
 Date: 4/15/2011  
 Model: IGRF2010

### WELLBORE TARGET DETAILS (LAT/LONG)

Name	TVD	+N/-S	+E/-W	Latitude	Longitude	Shape
TARGET BHL 2080'FNL, 660'FEL	5800.0	1249.5	-41.9	40.154330	-104.587150	Point
LEGAL BOX 400' X 400' 1966'FNL, 655'FEL	6767.0	1363.5	-36.9	40.154643	-104.587132	Rectangle (Sides: L400.0 W400.0)
TARGET CIRCLE 2080'FNL & 660'FEL	6767.0	1249.5	-41.9	40.154330	-104.587150	Circle (Radius: 75.0)

### SECTION DETAILS

Sec	MD	Inc	Azi	TVD	+N/-S	+E/-W	DLeg	TFace	VSec	Target
1	0.0	0.00	0.00	0.0	0.0	0.0	0.00	0.00	0.0	
2	900.0	0.00	0.00	900.0	0.0	0.0	0.00	0.00	0.0	
3	1761.4	17.23	358.08	1748.5	128.5	-4.3	2.00	358.08	128.5	
4	5114.9	17.23	358.08	4951.5	1121.1	-37.6	0.00	0.00	1121.7	
5	5976.3	0.00	0.00	5800.0	1249.5	-41.9	2.00	180.00	1250.3	TARGET BHL 2080'FNL, 660'FEL
6	7853.3	0.00	0.00	7677.0	1249.5	-41.9	0.00	0.00	1250.3	