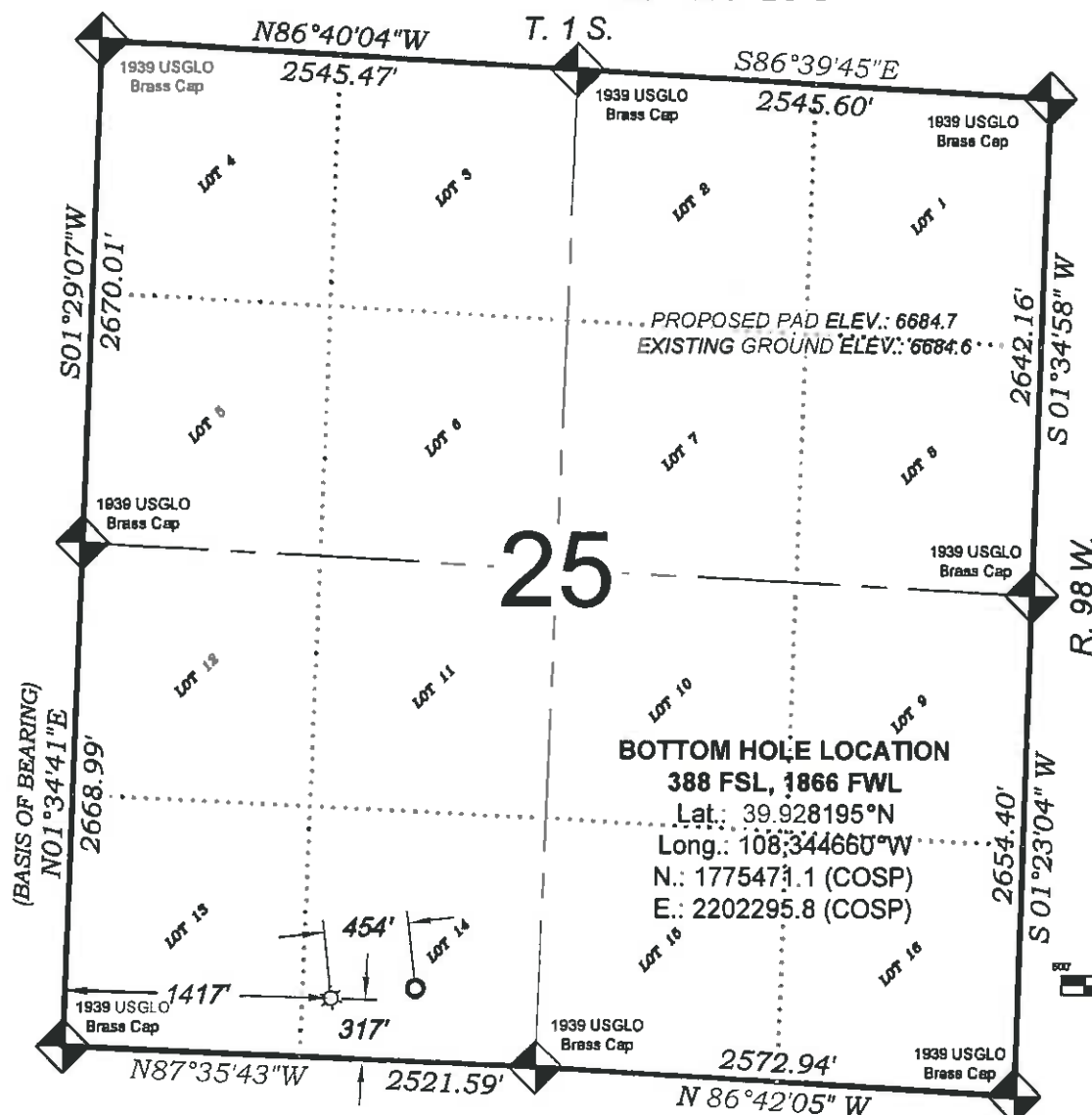
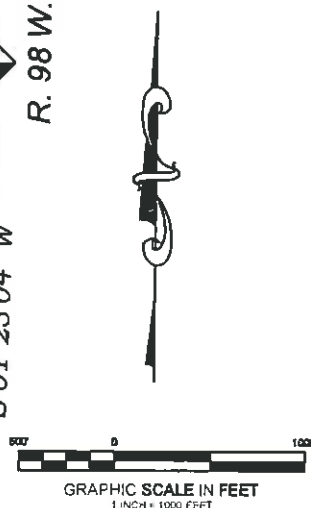


# Federal RGU 424-25-198



317 FSL  
1417 FWL  
**LATITUDE**  
39.928014°N  
**LONGITUDE**  
108.346262°W  
**NORTHING**  
1775419.2  
**EASTING**  
2201844.6



**BOTTOM HOLE LOCATION**  
388 FSL, 1866 FWL  
Lat.: 39.928195°N  
Long.: 108.344660°W  
N.: 1775471.1 (COSP)  
E.: 2202295.8 (COSP)

## - LEGEND -

- FIELD LOCATED SECTION MONUMENTS AS DESCRIBED
- FIELD SURVEYED WELL LOCATION
- CALCULATED BOTTOM HOLE LOCATION
- CALCULATED SECTION CORNER LOCATION

THERE ARE NO VISIBLE IMPROVEMENTS WITHIN 400' OF THIS LOCATION

## SURVEYORS STATEMENT

I, MICHAEL J. LANGHORNE, A REGISTERED LAND SURVEYOR IN THE STATE OF COLORADO DO HEREBY CERTIFY THAT THE SURVEY SHOWN HEREON WAS PREPARED UNDER MY DIRECT SUPERVISION AND HAS BEEN STAKED ON THE GROUND AS SHOWN ON THE PLAT AND CHECKING THAT THIS MAP IS A TRUE REPRESENTATION THEREOF.

*Michael J. Langhorne*  
36572

MICHAEL J. LANGHORNE, COLORADO REGISTRATION NO. 36572  
FOR AND ON BEHALF OF  
BOOKCLIFF SURVEY SERVICES, INC.

## NOTES

- 1) ELEVATIONS BASED ON N.A.V.D. 1988 PUBLISHED COORDINATES.
- 2) LATITUDES AND LONGITUDES ARE BASE ON NAD 83, PUBLISHED COORDINATES
- 3) STATE PLANE COORDINATES ARE BASED ON COLORADO CENTRAL ZONE, U.S. SURVEY FEET.
- 4) ELEVATION MASK SET TO 15"
- 5) GPS OPERATOR J. KIRKPATRICK, OBSERVED A PDOP OF 1.0 FOR SURVEY POINT NUMBER 260.
- 6) SURFACE AND BOTTOM HOLE LOCATIONS ARE MEASURED 90° FROM SECTION LINES.

## REFERENCES

- 1) DEPENDENT RESURVEY AND SUBDIVISION T. 1 S., R. 98 W., 6 th P.M (GLO PLAT)
- 2) U.S.G.S. QUAD: Square S Ranch, CO

WELL LOCATION PLAT Prepared for:

**Williams** Williams Production, RMT

SE1/4 SW1/4, SECTION 25  
T. 1 S., R. 98 W. of the 6th P.M.  
Rio BLANCO COUNTY, COLORADO

Bookcliff Survey Services, Inc.  
1000 West Third Street  
Durango, Colorado 81301  
Ph. (970) 225-1130  
Fax (970) 225-2773



**BOOKCLIFF**  
Survey Services, Inc.

SURVEY DATE: 2/24/11  
MAP DATE: 2/25/11  
SCALE: 1" = 1000'  
PLAT: 1 of 1  
PROJECT: Williams