



Well Name: Federal RGU 424-25-198

Surface Location: RGU 24-25-198 Pad

North American Datum 1983 , US State Plane 1983 , Colorado Central Zone

Ground Elevation: 6685.0

+N/-S
0.0

+E/-W
0.0

Northing
1775419.20

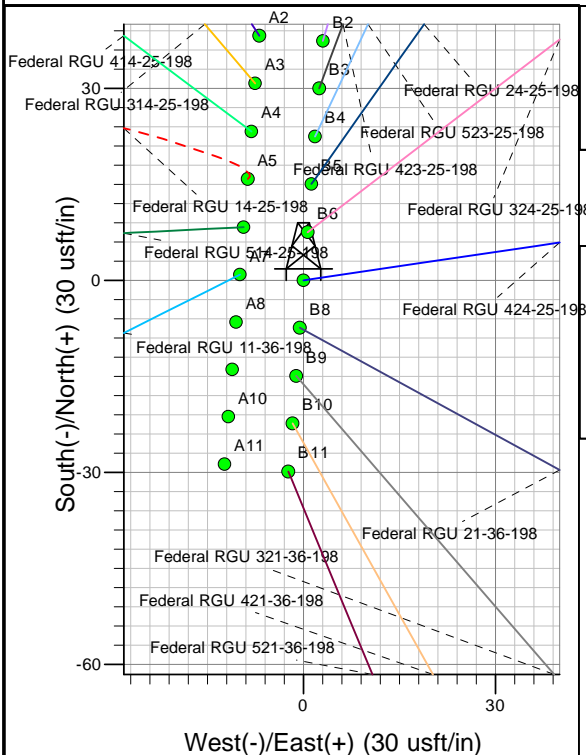
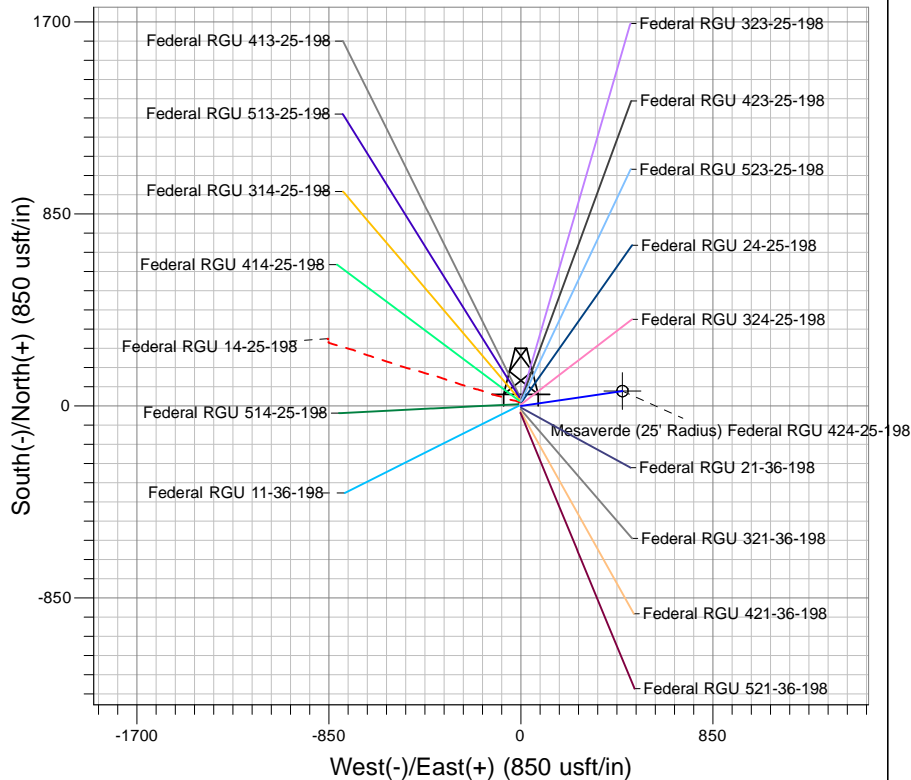
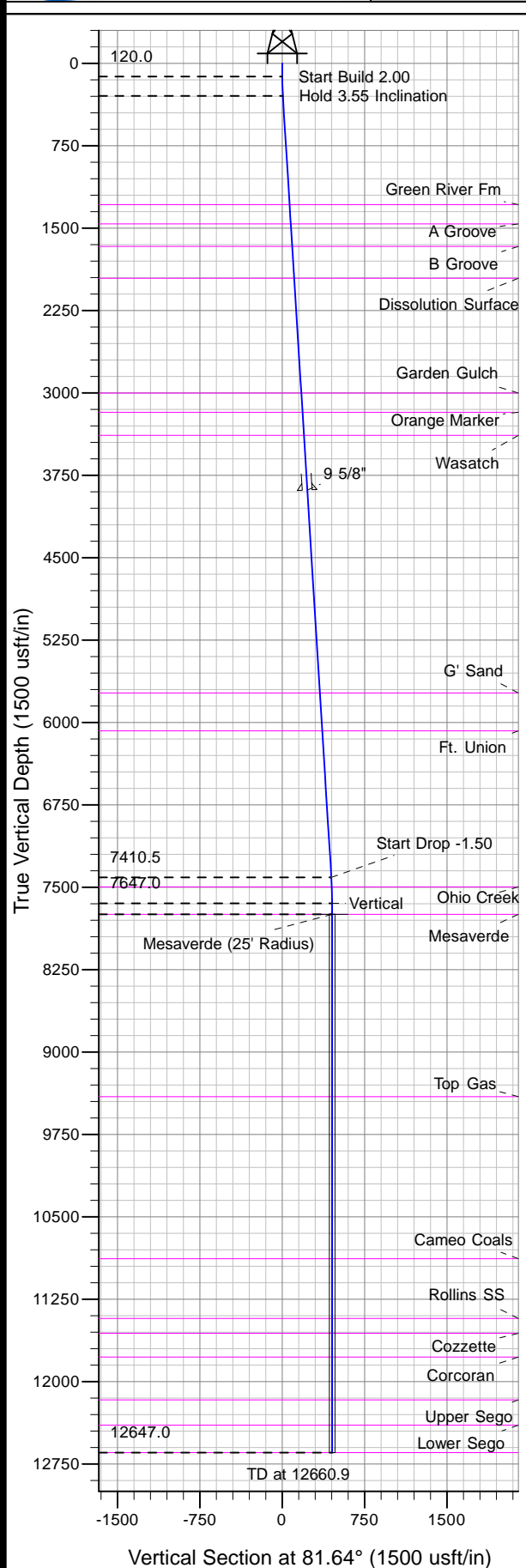
Easting
2201844.60

Latitude
39° 55' 40.850 N

Longitude
108° 20' 46.542 W

Slot
B7

KELLY BUSHING @ 6707.0usft (Frontier 10 (22' RKB) kjs)



Project: RG 25-01S-098W
Site: RGU 24-25-198 Pad
Well: Federal RGU 424-25-198
Plan #2 28Mar11 kjs



Azimuths to True North
Magnetic North: 11.10°
Magnetic Field
Strength: 52878.4snT
Dip Angle: 66.15°
Date: 3/21/2007
Model: IGRF2005-10

ANNOTATIONS

TVD	MD	Inc	Azi	+N/-S	+E/-W	VSec	Departure	Annotation
120.0	120.0	0.00	0.00	0.0	0.0	0.0	0.0	Start Build 2.00
297.4	297.5	3.55	81.64	0.8	5.4	5.5	5.5	Hold 3.55 Inclination
7410.5	7424.3	3.55	81.64	64.9	442.1	446.8	446.8	Start Drop -1.50
7647.0	7660.9	0.00	0.00	66.0	449.3	454.2	454.2	Vertical
7747.0	7760.9	0.00	0.00	66.0	449.3	454.2	454.2	Mesaverde
12647.0	12660.9	0.00	0.00	66.0	449.3	454.2	454.2	TD at 12660.9