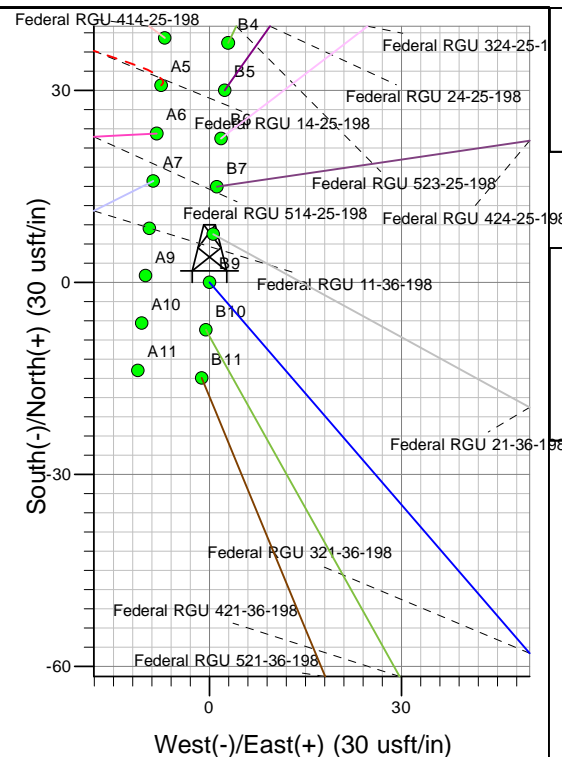
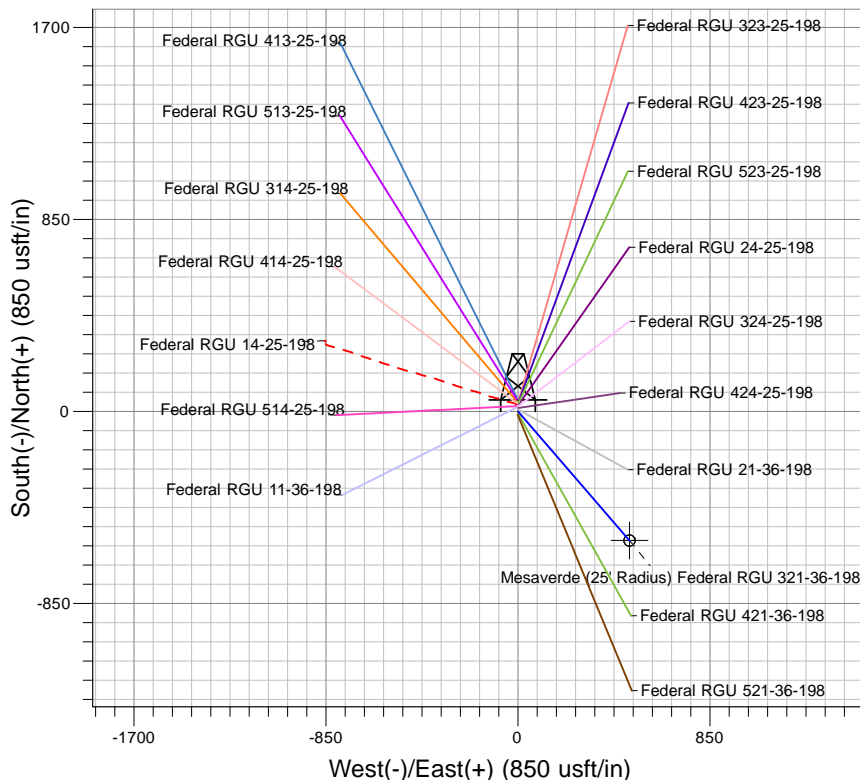
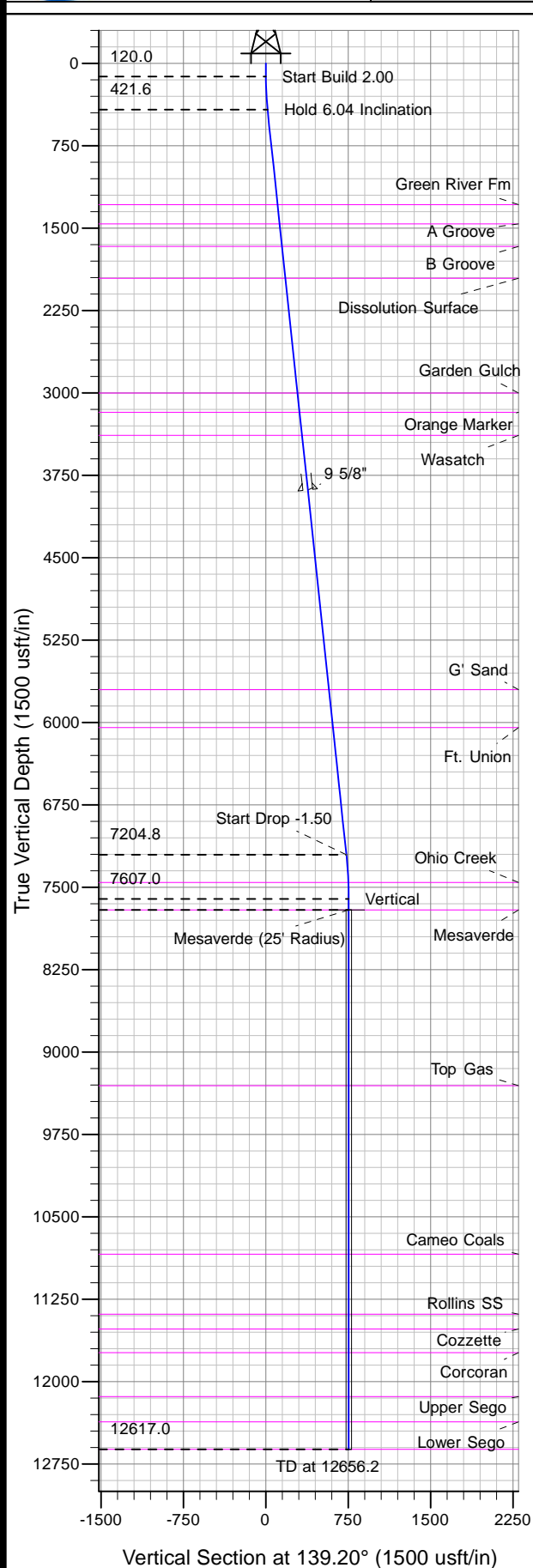




Well Name: Federal RGU 321-36-198
Surface Location: RGU 24-25-198 Pad
North American Datum 1983 , US State Plane 1983 , Colorado Central Zone
Ground Elevation: 6685.0
+N/-S +E/-W Northing Easting Latitude Longitude Slot
0.0 0.0 1775404.30 2201843.00 39° 55' 40.702 N 108° 20' 46.557 W B9
KELLY BUSHING @ 6707.0usft (Frontier 10 (22' RKB) kjs)



Project: RG 25-01S-098W
Site: RGU 24-25-198 Pad
Well: Federal RGU 321-36-198
Plan #2 28Mar11 kjs

Compass rose showing True North (T), Magnetic North (M), and Azimuth (A).
Azimuths to True North
Magnetic North: 11.10°
Magnetic Field
Strength: 52878.3snT
Dip Angle: 66.15°
Date: 3/21/2007
Model: IGRF2005-10

ANNOTATIONS

TVD	MD	Inc	Azi	+N/-S	+E/-W	VSec	Departure	Annotation
120.0	120.0	0.00	0.00	0.0	0.0	0.0	0.0	Start Build 2.00
421.6	422.2	6.04	139.20	-12.1	10.4	15.9	15.9	Hold 6.04 Inclination
7204.8	7243.3	6.04	139.20	-555.7	479.7	734.1	734.1	Start Drop -1.50
7607.0	7646.2	0.00	0.00	-571.8	493.5	755.3	755.3	Vertical
7707.0	7746.2	0.00	0.00	-571.8	493.5	755.3	755.3	Mesaverde
12617.0	12656.2	0.00	0.00	-571.8	493.5	755.3	755.3	TD at 12656.2