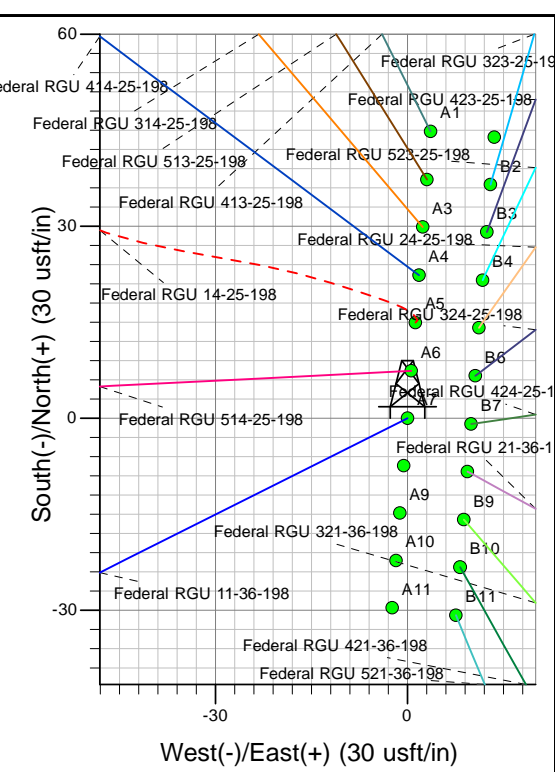
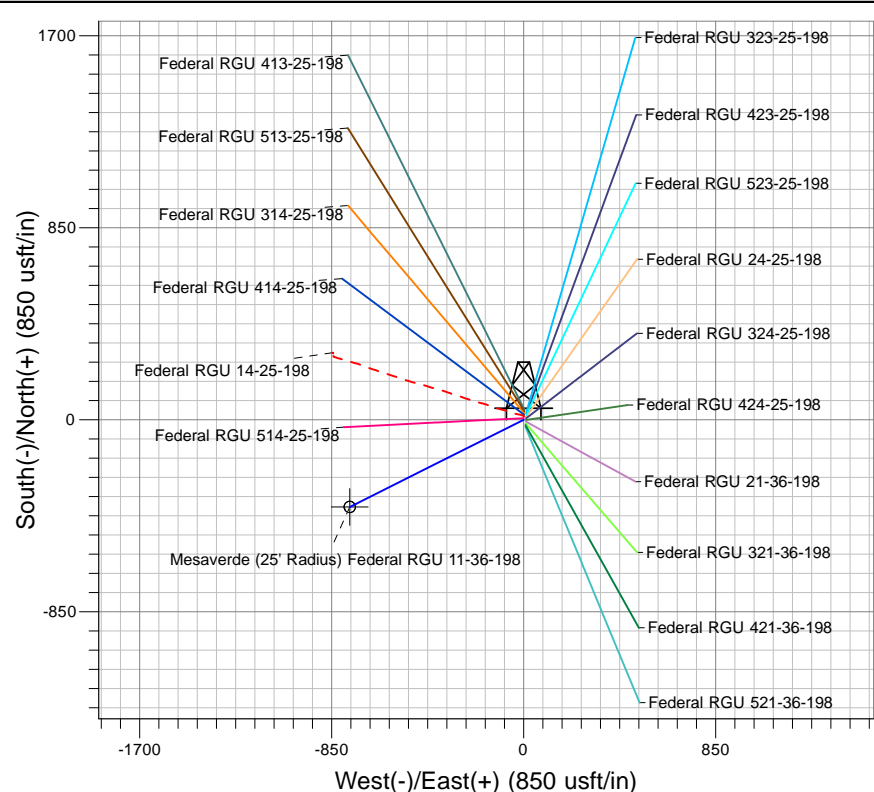
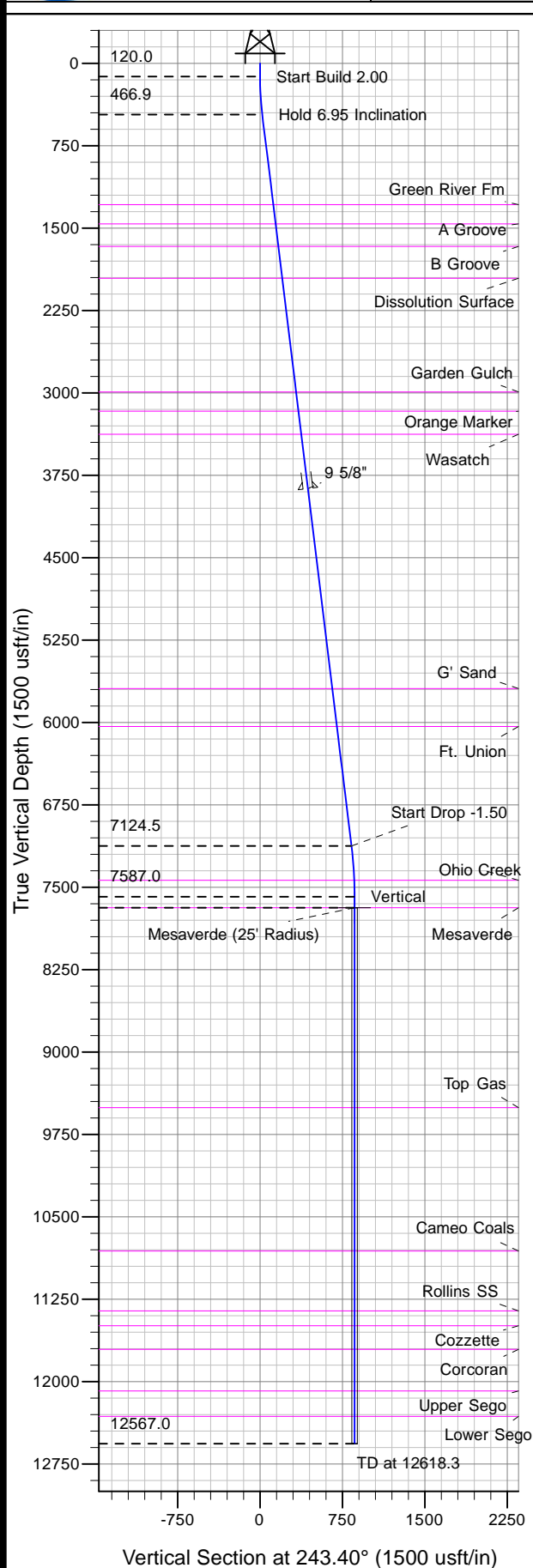




Well Name: Federal RGU 11-36-198
Surface Location: RGU 24-25-198 Pad
North American Datum 1983 , US State Plane 1983 , Colorado Central Zone
Ground Elevation: 6685.0
+N/-S +E/-W Northing Easting Latitude Longitude Slot
0.0 0.0 1775420.40 2201834.70 39° 55' 40.858 N 108° 20' 46.670 W A7
KELLY BUSHING @ 6707.0usft (Frontier 10 (22' RKB) kjs)



Project: RG 25-01S-098W
Site: RGU 24-25-198 Pad
Well: Federal RGU 11-36-198
Plan #2 28Mar11 kjs

Azimuths to True North
Magnetic North: 11.10°
Magnetic Field
Strength: 52878.4snT
Dip Angle: 66.15°
Date: 3/21/2007
Model: IGRF2005-10

ANNOTATIONS									
TVD	MD	Inc	Azi	+N/-S	+E/-W	VSec	Departure	Annotation	
120.0	120.0	0.00	0.00	0.0	0.0	0.0	0.0	Start Build 2.00	
466.9	467.7	6.95	243.40	-9.4	-18.8	21.1	21.1	Hold 6.95 Inclination	
7124.5	7174.7	6.95	243.40	-373.1	-744.9	833.2	833.2	Start Drop -1.50	
7587.0	7638.3	0.00	0.00	-385.7	-770.1	861.3	861.3	Vertical	
7687.0	7738.3	0.00	0.00	-385.7	-770.1	861.3	861.3	Mesaverde	
12567.0	12618.3	0.00	0.00	-385.7	-770.1	861.3	861.3	TD at 12618.3	