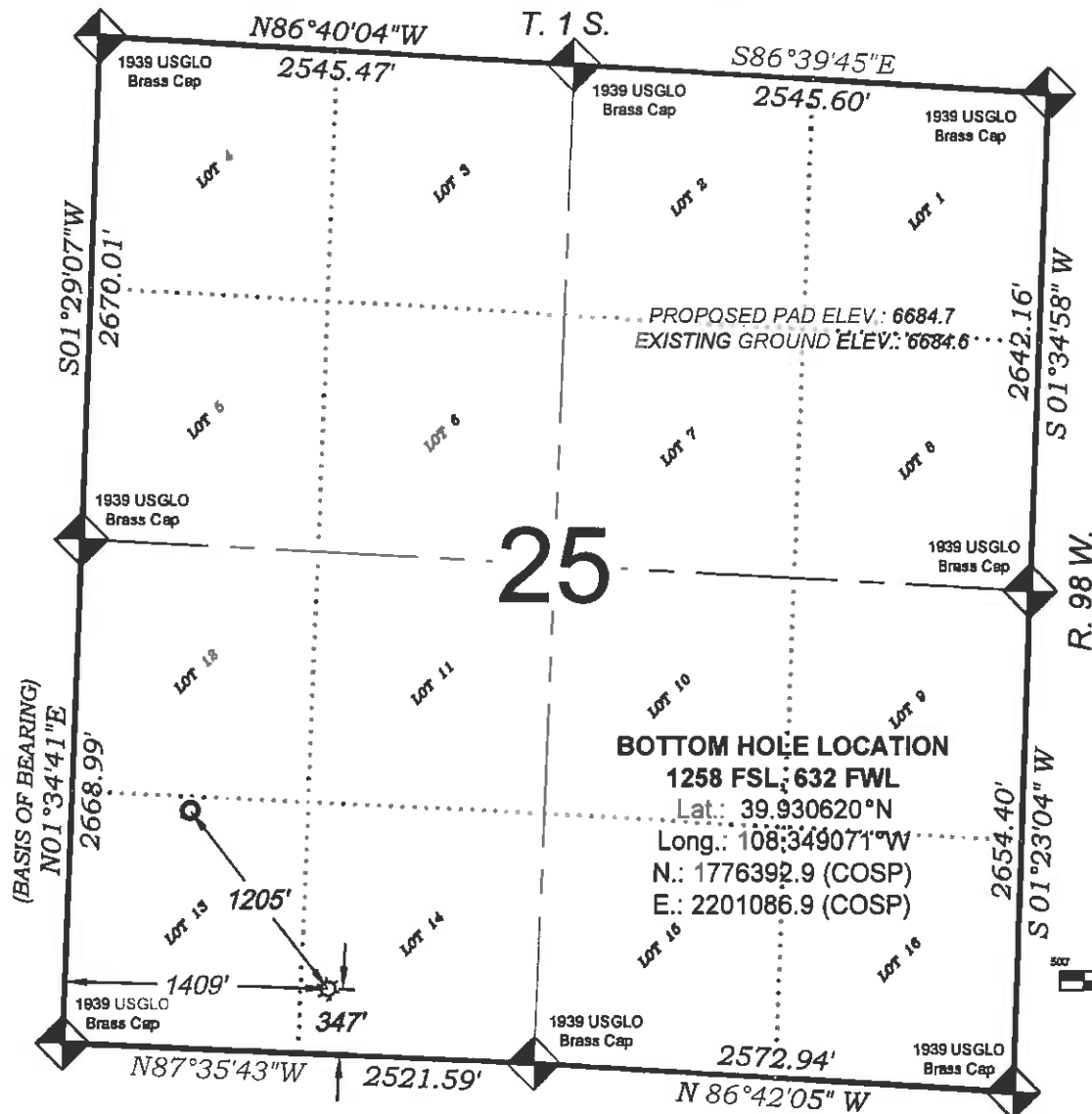


# Federal RGU 314-25-198



347 FSL  
1409 FWL  
**LATITUDE**  
39.928098°N  
**LONGITUDE**  
108.346289°W  
**NORTHING**  
1775450.2  
**EASTING**  
2201838.0

**BOTTOM HOLE LOCATION**  
1258 FSL; 632 FWL  
Lat.: 39.930620°N  
Long.: 108.349071°W  
N.: 1776392.9 (COSP)  
E.: 2201086.9 (COSP)



## - LEGEND -

FIELD LOCATED SECTION  
MONUMENTS AS DESCRIBED

FIELD SURVEYED  
WELL LOCATION

CALCULATED BOTTOM  
HOLE LOCATION

CALCULATED SECTION  
CORNER LOCATION

## NOTES

- 1) ELEVATIONS BASED ON N.A.V.D. 1988 PUBLISHED COORDINATES.
- 2) LATITUDES AND LONGITUDES ARE BASE ON NAD 83, PUBLISHED COORDINATES
- 3) STATE PLANE COORDINATES ARE BASED ON COLORADO CENTRAL ZONE, U.S. SURVEY FEET.
- 4) ELEVATION MASK SET TO 15"
- 5) GPS OPERATOR J. KIRKPATRICK, OBSERVED A PDOP OF 1.0 FOR SURVEY POINT NUMBER 260.
- 6) SURFACE AND BOTTOM HOLE LOCATIONS ARE MEASURED 90° FROM SECTION LINES.

**WELL LOCATION PLAT Prepared for:**

**Williams Williams Production, RMT**

SE1/4 SW1/4, SECTION 25  
T. 1 S., R. 98 W. of the 6th. P.M.  
Rio BLANCO COUNTY, COLORADO

THERE ARE NO VISIBLE  
IMPROVEMENTS WITHIN 400'  
OF THIS LOCATION

## SURVEYORS STATEMENT

I, MICHAEL J. LANGHORNE, A REGISTERED LAND SURVEYOR IN THE STATE OF COLORADO DO HEREBY CERTIFY THAT THE SURVEY SHOWN HEREON WAS PREPARED UNDER MY DIRECT SUPERVISION AND HAS BEEN STAKED ON THE GROUND AS SHOWN ON THE PLAT AND CHECKING THAT THIS MAP IS A TRUE REPRESENTATION THEREOF.

*Michael J. Langhorne*

MICHAEL J. LANGHORNE, COLORADO REGISTRATION NO. 36572  
FOR AND ON BEHALF OF  
BOOKCLIFF SURVEY SERVICES, INC.

## REFERENCES

- 1) DEPENDENT RESURVEY AND SUBDIVISION T. 1 S., R. 98 W., 6<sup>th</sup> P.M (GLO PLAT)
- 2) U.S.G.S. QUAD: Square S Ranch, CO

SURVEY DATE: 2/24/11  
MAP DATE: 2/25/11  
SCALE: 1" = 1000'  
PLAT: 1 of 1  
PROJECT: Williams

130 West Third Street  
Boulder, Colorado 80502  
Ph: (303) 442-1300  
Fax: (303) 442-0773

**BOOKCLIFF**  
Survey Services, Inc.