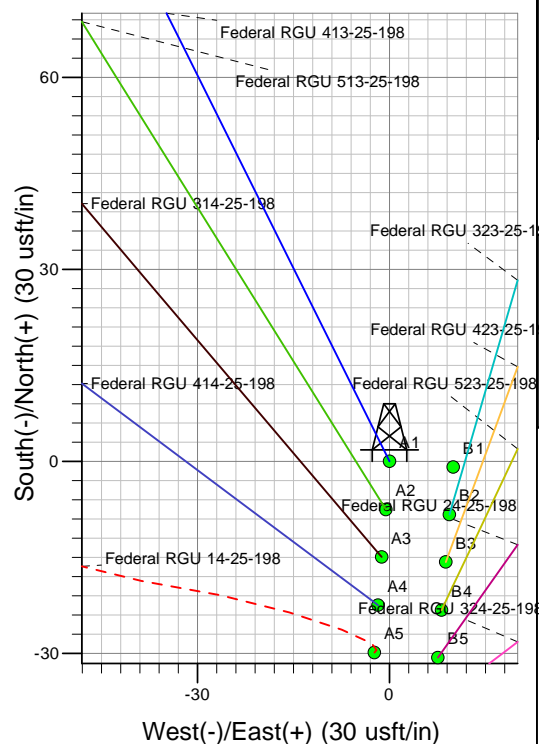
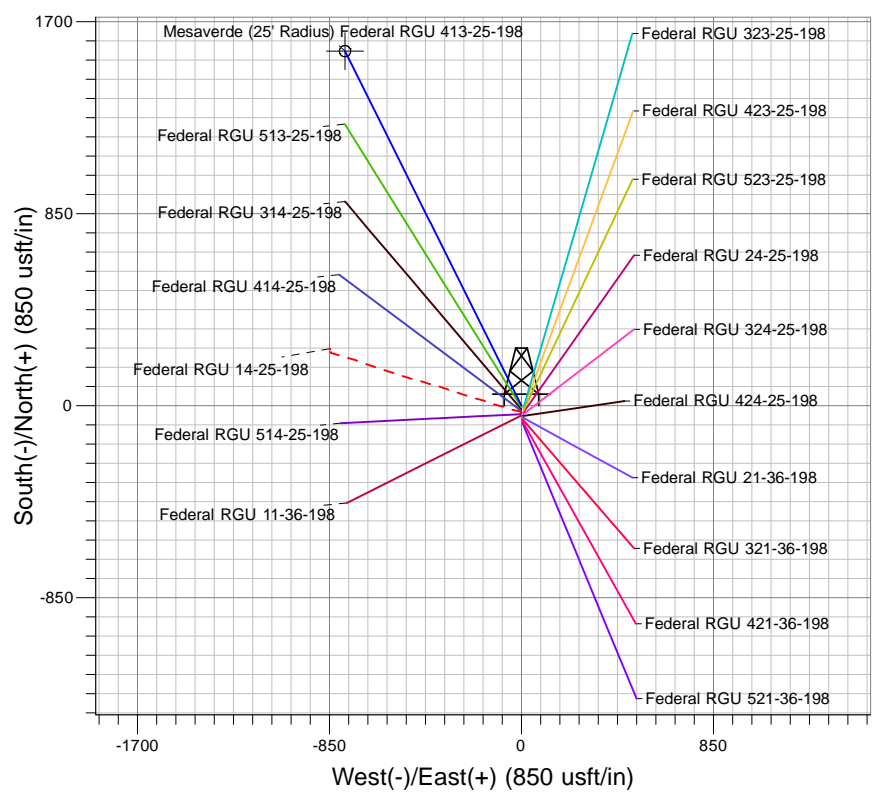
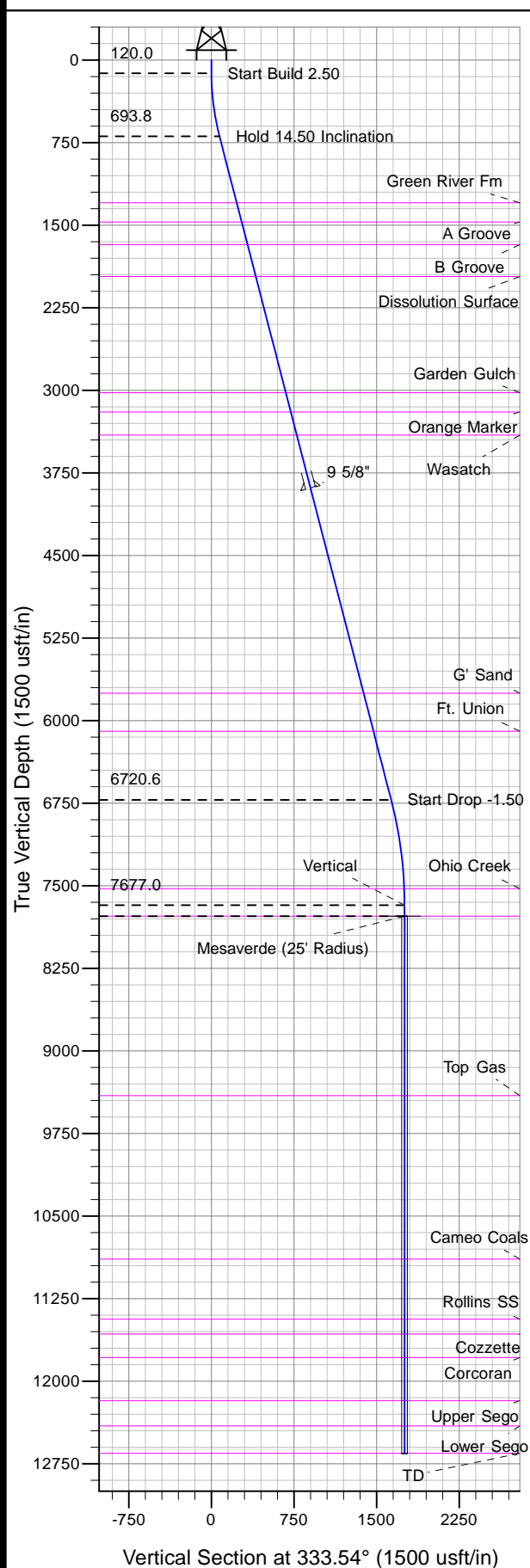




Well Name: Federal RGU 413-25-198
Surface Location: RGU 24-25-198 Pad
North American Datum 1983 , US State Plane 1983 , Colorado Central Zone
Ground Elevation: 6685.0
+N/-S +E/-W Northing Easting Latitude Longitude Slot
0.0 0.0 1775465.10 2201839.70 39° 55' 41.301 N 108° 20' 46.624 W A1
KELLY BUSHING @ 6707.0usft (Frontier 10 (22' RKB) kjs)



Project: RG 25-01S-098W
Site: RGU 24-25-198 Pad
Well: Federal RGU 413-25-198
Plan #2 20Mar11 kjs

Azimuths to True North
Magnetic North: 10.69°
Magnetic Field
Strength: 52525.7snT
Dip Angle: 66.05°
Date: 7/14/2010
Model: IGRF2010

ANNOTATIONS

TVD	MD	Inc	Azi	+N/-S	+E/-W	VSec	Departure	Annotation
120.0	120.0	0.00	0.00	0.0	0.0	0.0	0.0	Start Build 2.50
693.8	700.0	14.50	333.54	65.3	-32.5	73.0	73.0	Hold 14.50 Inclination
6720.6	6925.1	14.50	333.54	1460.6	-727.1	1631.6	1631.6	Start Drop -1.50
7677.0	7891.7	0.00	0.00	1569.5	-781.3	1753.3	1753.3	Vertical
7777.0	7991.7	0.00	0.00	1569.5	-781.3	1753.3	1753.3	Mesaverde
12657.0	12871.7	0.00	0.00	1569.5	-781.3	1753.3	1753.3	TD at 12871.7