

Project: COLORADO NORTHERN ZONE - 83  
 Site: WELD\_DACANO 6-2-9F PAD  
 Well: DACONO 21-2  
 Wellbore: OH  
 Section: SECTION 2 T1N R68W  
 SHL:  
 Design: DACONO 21-2(wp01)  
 Latitude: 40° 4' 55.131 N  
 Longitude: 104° 58' 23.815 W  
 GL: 5016.00  
 KB: GL 5016' & KB 15' @ 5031.00ft (ASSUMED)

#### FORMATION TOP DETAILS

TVDPath	MDPath	Formation
4115.00	4163.89	PARKMAN
4535.00	4589.76	SUSSEX
7449.00	7533.07	NIOBRARA
7738.00	7822.07	CODELL
7813.00	7897.07	GREENHORN
8180.00	8264.07	J-SAND



Azimuths to Grid North  
 True North: -0.34°  
 Magnetic North: 8.64°  
 Magnetic Field  
 Strength: 52965.4snT  
 Dip Angle: 66.77°  
 Date: 03/17/2011  
 Model: IGRF2010

#### WELL DETAILS: DACONO 21-2

+N/-S	+E/-W	Northing	Ground Level: Easting	5016.00 Latitude	Longitude	Slot
0.00	0.00	1273148.19	3147383.69	40° 4' 55.131 N	104° 58' 23.815 W	

#### CASING DETAILS

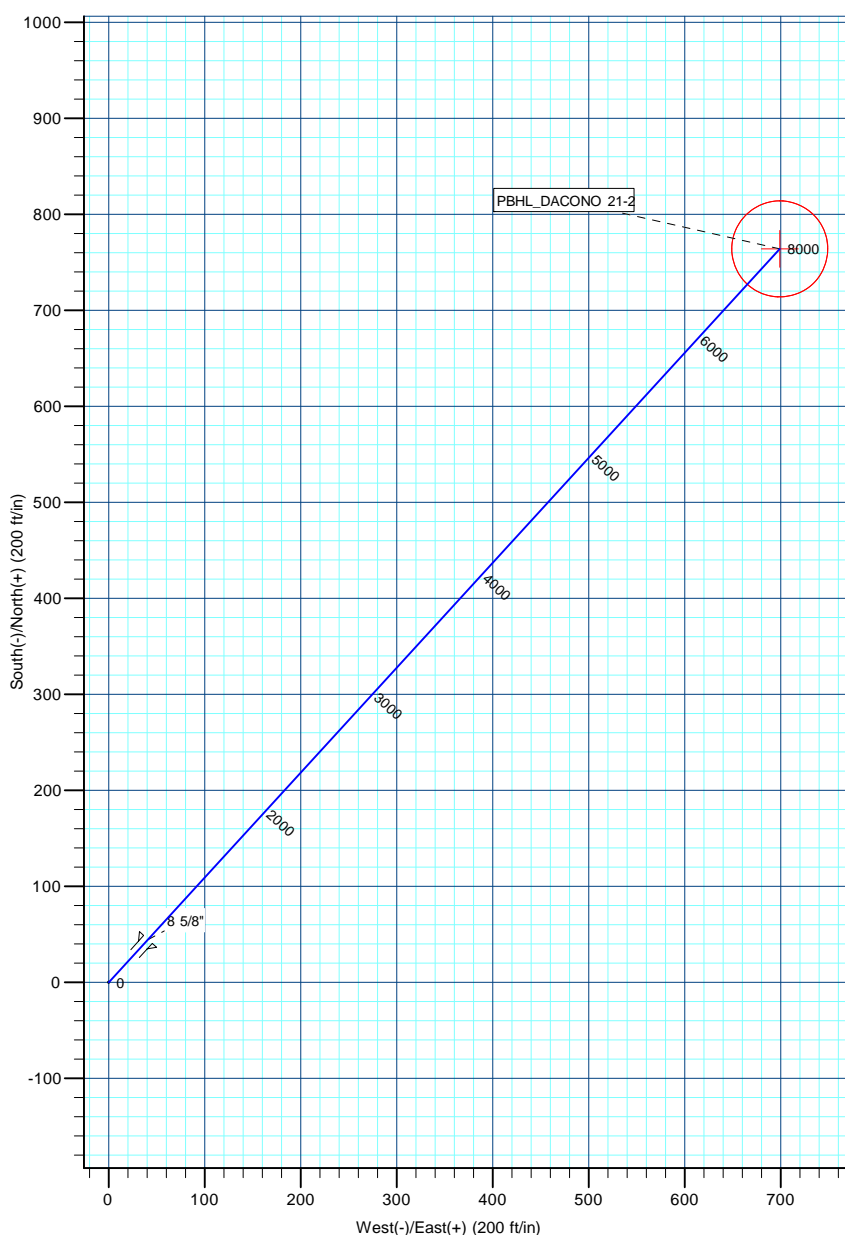
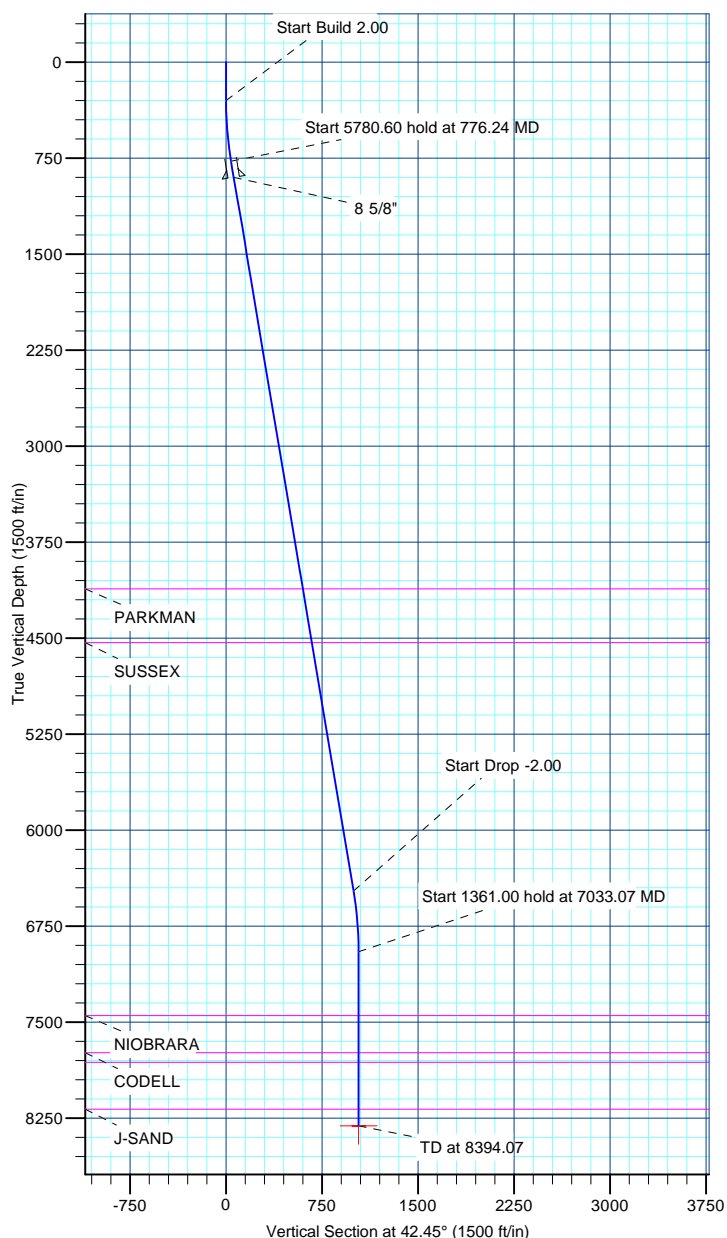
TVD	MD	Name	Size
900.00	903.95	8 5/8"	8.625

#### DESIGN TARGET DETAILS

Name	TVD	+N/-S	+E/-W	Northing	Easting	Latitude	Longitude	Shape
PBHL_DACONO 21-2	8310.00	764.09	698.91	1273912.28	3148082.60	40° 5' 2.641 N	104° 58' 14.765 W	Circle (Radius: 50.00)

#### SECTION DETAILS

MD	Inc	Azi	TVD	+N/-S	+E/-W	Dleg	TFace	VSect
0.00	0.00	0.00	0.00	0.00	0.00	0.00	0.00	0.00
300.00	0.00	0.00	300.00	0.00	0.00	0.00	0.00	0.00
776.24	9.52	42.45	774.05	29.14	26.66	2.00	42.45	39.49
6556.83	9.52	42.45	6474.95	734.94	672.26	0.00	0.00	996.03
7033.07	0.00	0.00	6949.00	764.08	698.91	2.00	180.00	1035.52
8394.07	0.00	0.00	8310.00	764.08	698.91	0.00	0.00	1035.52



# **US ROCKIES REGION PLANNING**

**COLORADO NORTHERN ZONE - 83**

**WELD\_DACANO 6-2-9F PAD**

**DACONO 21-2**

**OH**

**Plan: DACONO 21-2(wp01)**

## **Standard Planning Report**

**17 March, 2011**

<b>Database:</b>	EDM5000-RobertS-Local	<b>Local Co-ordinate Reference:</b>	Well DACONO 21-2
<b>Company:</b>	US ROCKIES REGION PLANNING	<b>TVD Reference:</b>	GL 5016' & KB 15' @ 5031.00ft (ASSUMED)
<b>Project:</b>	COLORADO NORTHERN ZONE - 83	<b>MD Reference:</b>	GL 5016' & KB 15' @ 5031.00ft (ASSUMED)
<b>Site:</b>	WELD_DACANO 6-2-9F PAD	<b>North Reference:</b>	Grid
<b>Well:</b>	DACONO 21-2	<b>Survey Calculation Method:</b>	Minimum Curvature
<b>Wellbore:</b>	OH		
<b>Design:</b>	DACONO 21-2(wp01)		

<b>Project</b>	COLORADO NORTHERN ZONE - 83, KERR MCGEE OIL & GAS ONSHORE LP		
<b>Map System:</b>	US State Plane 1983	<b>System Datum:</b>	Mean Sea Level
<b>Geo Datum:</b>	North American Datum 1983		
<b>Map Zone:</b>	Colorado Northern Zone		

Site						WELD_DACANO 6-2-9F PAD, SECTION 2 T1N R68W					
Site Position:				Northing:		1,273,198.12 usft		Latitude:		40° 4' 55.625 N	
From:		Lat/Long		Easting:		3,147,383.39 usft		Longitude:		104° 58' 23.815 W	
Position Uncertainty:		0.00 ft		Slot Radius:		13.200 in		Grid Convergence:		0.34	

Well	DACONO 21-2					
Well Position	+N/-S	-49.93 ft	Northing:	1,273,148.19 usft	Latitude:	40° 4' 55.131 N
	+E/-W	0.30 ft	Easting:	3,147,383.69 usft	Longitude:	104° 58' 23.815 W
Position Uncertainty		0.00 ft	Wellhead Elevation:		Ground Level:	5,016.00 ft

<b>Wellbore</b>	OH				
<b>Magnetics</b>	<b>Model Name</b>	<b>Sample Date</b>	<b>Declination (°)</b>	<b>Dip Angle (°)</b>	<b>Field Strength (nT)</b>
	IGRF2010	03/17/2011	8.98	66.77	52,965

<b>Design</b>	DACONO 21-2(wp01)			
<b>Audit Notes:</b>				
<b>Version:</b>	<b>Phase:</b>	PLAN	<b>Tie On Depth:</b>	0.00
<b>Vertical Section:</b>	<b>Depth From (TVD) (ft)</b>	<b>+N/-S (ft)</b>	<b>+E/-W (ft)</b>	<b>Direction (°)</b>
	0.00	0.00	0.00	42.45

<b>Plan Sections</b>										
Measured Depth (ft)	Inclination (°)	Azimuth (°)	Vertical Depth (ft)	+N/-S (ft)	+E/-W (ft)	Dogleg Rate (°/100ft)	Build Rate (°/100ft)	Turn Rate (°/100ft)	TFO (°)	Target
0.00	0.00	0.00	0.00	0.00	0.00	0.00	0.00	0.00	0.00	
300.00	0.00	0.00	300.00	0.00	0.00	0.00	0.00	0.00	0.00	
776.24	9.52	42.45	774.05	29.14	26.66	2.00	2.00	0.00	42.45	
6,556.83	9.52	42.45	6,474.95	734.94	672.26	0.00	0.00	0.00	0.00	
7,033.07	0.00	0.00	6,949.00	764.08	698.91	2.00	-2.00	0.00	180.00	
8,394.07	0.00	0.00	8,310.00	764.08	698.91	0.00	0.00	0.00	0.00	PBHL_DACONO 21-2

<b>Database:</b>	EDM5000-RobertS-Local	<b>Local Co-ordinate Reference:</b>	Well DACONO 21-2
<b>Company:</b>	US ROCKIES REGION PLANNING	<b>TVD Reference:</b>	GL 5016' & KB 15' @ 5031.00ft (ASSUMED)
<b>Project:</b>	COLORADO NORTHERN ZONE - 83	<b>MD Reference:</b>	GL 5016' & KB 15' @ 5031.00ft (ASSUMED)
<b>Site:</b>	WELD_DACANO 6-2-9F PAD	<b>North Reference:</b>	Grid
<b>Well:</b>	DACONO 21-2	<b>Survey Calculation Method:</b>	Minimum Curvature
<b>Wellbore:</b>	OH		
<b>Design:</b>	DACONO 21-2(wp01)		

Planned Survey									
Measured Depth (ft)	Inclination (°)	Azimuth (°)	Vertical Depth (ft)	+N/-S (ft)	+E/-W (ft)	Vertical Section (ft)	Dogleg Rate (°/100ft)	Build Rate (°/100ft)	Turn Rate (°/100ft)
0.00	0.00	0.00	0.00	0.00	0.00	0.00	0.00	0.00	0.00
100.00	0.00	0.00	100.00	0.00	0.00	0.00	0.00	0.00	0.00
200.00	0.00	0.00	200.00	0.00	0.00	0.00	0.00	0.00	0.00
300.00	0.00	0.00	300.00	0.00	0.00	0.00	0.00	0.00	0.00
<b>Start Build 2.00</b>									
400.00	2.00	42.45	399.98	1.29	1.18	1.75	2.00	2.00	0.00
500.00	4.00	42.45	499.84	5.15	4.71	6.98	2.00	2.00	0.00
600.00	6.00	42.45	599.45	11.58	10.59	15.69	2.00	2.00	0.00
700.00	8.00	42.45	698.70	20.57	18.82	27.88	2.00	2.00	0.00
776.24	9.52	42.45	774.05	29.14	26.66	39.49	2.00	2.00	0.00
<b>Start 5780.60 hold at 776.24 MD</b>									
800.00	9.52	42.45	797.48	32.04	29.31	43.43	0.00	0.00	0.00
900.00	9.52	42.45	896.10	44.25	40.48	59.97	0.00	0.00	0.00
903.95	9.52	42.45	900.00	44.73	40.92	60.63	0.00	0.00	0.00
<b>8 5/8"</b>									
1,000.00	9.52	42.45	994.72	56.46	51.65	76.52	0.00	0.00	0.00
1,100.00	9.52	42.45	1,093.35	68.67	62.81	93.07	0.00	0.00	0.00
1,200.00	9.52	42.45	1,191.97	80.88	73.98	109.61	0.00	0.00	0.00
1,300.00	9.52	42.45	1,290.59	93.09	85.15	126.16	0.00	0.00	0.00
1,400.00	9.52	42.45	1,389.21	105.30	96.32	142.71	0.00	0.00	0.00
1,500.00	9.52	42.45	1,487.83	117.51	107.49	159.26	0.00	0.00	0.00
1,600.00	9.52	42.45	1,586.45	129.72	118.66	175.80	0.00	0.00	0.00
1,700.00	9.52	42.45	1,685.07	141.93	129.83	192.35	0.00	0.00	0.00
1,800.00	9.52	42.45	1,783.70	154.14	140.99	208.90	0.00	0.00	0.00
1,900.00	9.52	42.45	1,882.32	166.35	152.16	225.45	0.00	0.00	0.00
2,000.00	9.52	42.45	1,980.94	178.56	163.33	241.99	0.00	0.00	0.00
2,100.00	9.52	42.45	2,079.56	190.77	174.50	258.54	0.00	0.00	0.00
2,200.00	9.52	42.45	2,178.18	202.98	185.67	275.09	0.00	0.00	0.00
2,300.00	9.52	42.45	2,276.80	215.19	196.84	291.64	0.00	0.00	0.00
2,400.00	9.52	42.45	2,375.42	227.40	208.00	308.18	0.00	0.00	0.00
2,500.00	9.52	42.45	2,474.05	239.61	219.17	324.73	0.00	0.00	0.00
2,600.00	9.52	42.45	2,572.67	251.82	230.34	341.28	0.00	0.00	0.00
2,700.00	9.52	42.45	2,671.29	264.03	241.51	357.82	0.00	0.00	0.00
2,800.00	9.52	42.45	2,769.91	276.24	252.68	374.37	0.00	0.00	0.00
2,900.00	9.52	42.45	2,868.53	288.45	263.85	390.92	0.00	0.00	0.00
3,000.00	9.52	42.45	2,967.15	300.66	275.02	407.47	0.00	0.00	0.00
3,100.00	9.52	42.45	3,065.77	312.87	286.18	424.01	0.00	0.00	0.00
3,200.00	9.52	42.45	3,164.40	325.08	297.35	440.56	0.00	0.00	0.00
3,300.00	9.52	42.45	3,263.02	337.29	308.52	457.11	0.00	0.00	0.00
3,400.00	9.52	42.45	3,361.64	349.50	319.69	473.66	0.00	0.00	0.00
3,500.00	9.52	42.45	3,460.26	361.71	330.86	490.20	0.00	0.00	0.00
3,600.00	9.52	42.45	3,558.88	373.92	342.03	506.75	0.00	0.00	0.00
3,700.00	9.52	42.45	3,657.50	386.13	353.19	523.30	0.00	0.00	0.00
3,800.00	9.52	42.45	3,756.12	398.34	364.36	539.85	0.00	0.00	0.00
3,900.00	9.52	42.45	3,854.75	410.55	375.53	556.39	0.00	0.00	0.00
4,000.00	9.52	42.45	3,953.37	422.76	386.70	572.94	0.00	0.00	0.00
4,100.00	9.52	42.45	4,051.99	434.97	397.87	589.49	0.00	0.00	0.00
4,163.89	9.52	42.45	4,115.00	442.77	405.00	600.06	0.00	0.00	0.00
<b>PARKMAN</b>									
4,200.00	9.52	42.45	4,150.61	447.18	409.04	606.03	0.00	0.00	0.00
4,300.00	9.52	42.45	4,249.23	459.39	420.20	622.58	0.00	0.00	0.00
4,400.00	9.52	42.45	4,347.85	471.60	431.37	639.13	0.00	0.00	0.00
4,500.00	9.52	42.45	4,446.47	483.81	442.54	655.68	0.00	0.00	0.00
4,589.76	9.52	42.45	4,535.00	494.77	452.57	670.53	0.00	0.00	0.00

<b>Database:</b>	EDM5000-RobertS-Local	<b>Local Co-ordinate Reference:</b>	Well DACONO 21-2
<b>Company:</b>	US ROCKIES REGION PLANNING	<b>TVD Reference:</b>	GL 5016' & KB 15' @ 5031.00ft (ASSUMED)
<b>Project:</b>	COLORADO NORTHERN ZONE - 83	<b>MD Reference:</b>	GL 5016' & KB 15' @ 5031.00ft (ASSUMED)
<b>Site:</b>	WELD_DACANO 6-2-9F PAD	<b>North Reference:</b>	Grid
<b>Well:</b>	DACONO 21-2	<b>Survey Calculation Method:</b>	Minimum Curvature
<b>Wellbore:</b>	OH		
<b>Design:</b>	DACONO 21-2(wp01)		

Planned Survey									
Measured Depth (ft)	Inclination (°)	Azimuth (°)	Vertical Depth (ft)	+N/-S (ft)	+E/-W (ft)	Vertical Section (ft)	Dogleg Rate (°/100ft)	Build Rate (°/100ft)	Turn Rate (°/100ft)
<b>SUSSEX</b>									
4,600.00	9.52	42.45	4,545.10	496.02	453.71	672.22	0.00	0.00	0.00
4,700.00	9.52	42.45	4,643.72	508.23	464.88	688.77	0.00	0.00	0.00
4,800.00	9.52	42.45	4,742.34	520.44	476.05	705.32	0.00	0.00	0.00
4,900.00	9.52	42.45	4,840.96	532.65	487.22	721.87	0.00	0.00	0.00
5,000.00	9.52	42.45	4,939.58	544.86	498.38	738.41	0.00	0.00	0.00
5,100.00	9.52	42.45	5,038.20	557.07	509.55	754.96	0.00	0.00	0.00
5,200.00	9.52	42.45	5,136.82	569.28	520.72	771.51	0.00	0.00	0.00
5,300.00	9.52	42.45	5,235.45	581.49	531.89	788.06	0.00	0.00	0.00
5,400.00	9.52	42.45	5,334.07	593.70	543.06	804.60	0.00	0.00	0.00
5,500.00	9.52	42.45	5,432.69	605.91	554.23	821.15	0.00	0.00	0.00
5,600.00	9.52	42.45	5,531.31	618.11	565.39	837.70	0.00	0.00	0.00
5,700.00	9.52	42.45	5,629.93	630.32	576.56	854.24	0.00	0.00	0.00
5,800.00	9.52	42.45	5,728.55	642.53	587.73	870.79	0.00	0.00	0.00
5,900.00	9.52	42.45	5,827.17	654.74	598.90	887.34	0.00	0.00	0.00
6,000.00	9.52	42.45	5,925.80	666.95	610.07	903.89	0.00	0.00	0.00
6,100.00	9.52	42.45	6,024.42	679.16	621.24	920.43	0.00	0.00	0.00
6,200.00	9.52	42.45	6,123.04	691.37	632.40	936.98	0.00	0.00	0.00
6,300.00	9.52	42.45	6,221.66	703.58	643.57	953.53	0.00	0.00	0.00
6,400.00	9.52	42.45	6,320.28	715.79	654.74	970.08	0.00	0.00	0.00
6,500.00	9.52	42.45	6,418.90	728.00	665.91	986.62	0.00	0.00	0.00
6,556.83	9.52	42.45	6,474.95	734.94	672.26	996.03	0.00	0.00	0.00
<b>Start Drop -2.00</b>									
6,600.00	8.66	42.45	6,517.58	739.98	676.86	1,002.85	2.00	-2.00	0.00
6,700.00	6.66	42.45	6,616.68	749.81	685.86	1,016.18	2.00	-2.00	0.00
6,800.00	4.66	42.45	6,716.19	757.09	692.52	1,026.05	2.00	-2.00	0.00
6,900.00	2.66	42.45	6,815.98	761.80	696.83	1,032.43	2.00	-2.00	0.00
7,000.00	0.66	42.45	6,915.93	763.94	698.78	1,035.33	2.00	-2.00	0.00
7,033.07	0.00	0.00	6,949.00	764.08	698.91	1,035.52	2.00	-2.00	0.00
<b>Start 1361.00 hold at 7033.07 MD</b>									
7,100.00	0.00	0.00	7,015.93	764.08	698.91	1,035.52	0.00	0.00	0.00
7,200.00	0.00	0.00	7,115.93	764.08	698.91	1,035.52	0.00	0.00	0.00
7,300.00	0.00	0.00	7,215.93	764.08	698.91	1,035.52	0.00	0.00	0.00
7,400.00	0.00	0.00	7,315.93	764.08	698.91	1,035.52	0.00	0.00	0.00
7,500.00	0.00	0.00	7,415.93	764.08	698.91	1,035.52	0.00	0.00	0.00
7,533.07	0.00	0.00	7,449.00	764.08	698.91	1,035.52	0.00	0.00	0.00
<b>NIORARA</b>									
7,600.00	0.00	0.00	7,515.93	764.08	698.91	1,035.52	0.00	0.00	0.00
7,700.00	0.00	0.00	7,615.93	764.08	698.91	1,035.52	0.00	0.00	0.00
7,800.00	0.00	0.00	7,715.93	764.08	698.91	1,035.52	0.00	0.00	0.00
7,822.07	0.00	0.00	7,738.00	764.08	698.91	1,035.52	0.00	0.00	0.00
<b>CODELL</b>									
7,897.07	0.00	0.00	7,813.00	764.08	698.91	1,035.52	0.00	0.00	0.00
<b>GREENHORN</b>									
7,900.00	0.00	0.00	7,815.93	764.08	698.91	1,035.52	0.00	0.00	0.00
8,000.00	0.00	0.00	7,915.93	764.08	698.91	1,035.52	0.00	0.00	0.00
8,100.00	0.00	0.00	8,015.93	764.08	698.91	1,035.52	0.00	0.00	0.00
8,200.00	0.00	0.00	8,115.93	764.08	698.91	1,035.52	0.00	0.00	0.00
8,264.07	0.00	0.00	8,180.00	764.08	698.91	1,035.52	0.00	0.00	0.00
<b>J-SAND</b>									
8,300.00	0.00	0.00	8,215.93	764.08	698.91	1,035.52	0.00	0.00	0.00
8,394.07	0.00	0.00	8,310.00	764.08	698.91	1,035.52	0.00	0.00	0.00
<b>PBHL_DACONO 21-2</b>									

<b>Database:</b>	EDM5000-RobertS-Local	<b>Local Co-ordinate Reference:</b>	Well DACONO 21-2
<b>Company:</b>	US ROCKIES REGION PLANNING	<b>TVD Reference:</b>	GL 5016' & KB 15' @ 5031.00ft (ASSUMED)
<b>Project:</b>	COLORADO NORTHERN ZONE - 83	<b>MD Reference:</b>	GL 5016' & KB 15' @ 5031.00ft (ASSUMED)
<b>Site:</b>	WELD_DACANO 6-2-9F PAD	<b>North Reference:</b>	Grid
<b>Well:</b>	DACONO 21-2	<b>Survey Calculation Method:</b>	Minimum Curvature
<b>Wellbore:</b>	OH		
<b>Design:</b>	DACONO 21-2(wp01)		

Planned Survey									
Measured Depth (ft)	Inclination (°)	Azimuth (°)	Vertical Depth (ft)	+N/-S (ft)	+E/-W (ft)	Vertical Section (ft)	Dogleg Rate (°/100ft)	Build Rate (°/100ft)	Turn Rate (°/100ft)

Design Targets									
Target Name	Dip Angle (°)	Dip Dir. (°)	TVD (ft)	+N/-S (ft)	+E/-W (ft)	Northing (usft)	Easting (usft)	Latitude	Longitude
- hit/miss target									
- Shape									
PBHL_DACONO 21-2	0.00	0.00	8,310.00	764.08	698.91	1,273,912.27	3,148,082.60	40° 5' 2.641 N	104° 58' 14.765 W
- plan hits target center									
- Circle (radius 50.00)									

Casing Points					
Measured Depth (ft)	Vertical Depth (ft)	Name	Casing Diameter (in)	Hole Diameter (in)	
903.95	900.00	8 5/8"	8.625	11.000	

Formations						
Measured Depth (ft)	Vertical Depth (ft)	Name	Lithology	Dip (°)	Dip Direction (°)	
4,163.89	4,115.00	PARKMAN				
4,589.76	4,535.00	SUSSEX				
7,533.07	7,449.00	NIOBRARA				
7,822.07	7,738.00	CODELL				
7,897.07	7,813.00	GREENHORN				
8,264.07	8,180.00	J-SAND				

Plan Annotations					
Measured Depth (ft)	Vertical Depth (ft)	Local Coordinates		Comment	
		+N/-S (ft)	+E/-W (ft)		
300.00	300.00	0.00	0.00	Start Build 2.00	
776.24	774.05	29.14	26.66	Start 5780.60 hold at 776.24 MD	
6,556.83	6,474.95	734.94	672.26	Start Drop -2.00	
7,033.07	6,949.00	764.08	698.91	Start 1361.00 hold at 7033.07 MD	
8,394.07	8,310.00	764.08	698.91	TD at 8394.07	