

Project: COLORADO NORTHERN ZONE - 83  
 Site: WELD\_DACANO 6-2-9F PAD  
 Well: DACONO 5-2  
 Wellbore: OH  
 Section: SECTION 2 T1N R68W  
 SHL:  
 Design: DACONO 5-2(wp01)  
 Latitude: 40° 4' 54.836 N  
 Longitude: 104° 58' 23.822 W  
 GL: 5016.00  
 KB: GL 5016' & KB 15' @ 5031.00ft (ASSUMED)

#### FORMATION TOP DETAILS

TVDPath	MDPath	Formation
4116.00	4182.95	PARKMAN
4536.00	4611.12	SUSSEX
7450.00	7564.80	NIOBRARA
7739.00	7853.80	CODELL
7814.00	7928.80	GREENHORN
8181.00	8295.80	J-SAND



Azimuths to Grid North  
 True North: -0.34°  
 Magnetic North: 8.64°  
 Magnetic Field  
 Strength: 52965.4snT  
 Dip Angle: 66.77°  
 Date: 03/17/2011  
 Model: IGRF2010

#### WELL DETAILS: DACONO 5-2

+N/-S	+E/-W	Northing	Easting	Ground Level: 5016.00	Latitude	Longitude	Slot
0.00	0.00	1273118.33	3147383.30	40° 4' 54.836 N	104° 58' 23.822 W		

#### CASING DETAILS

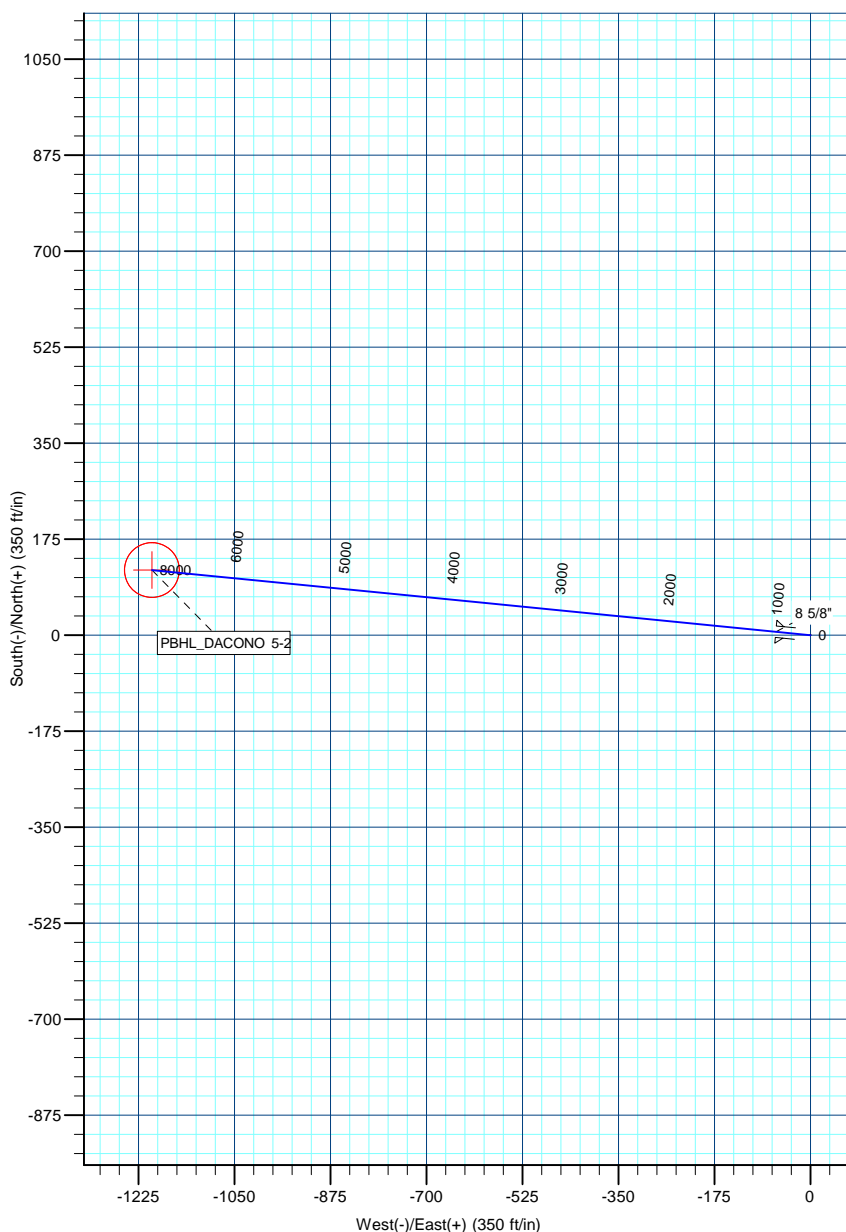
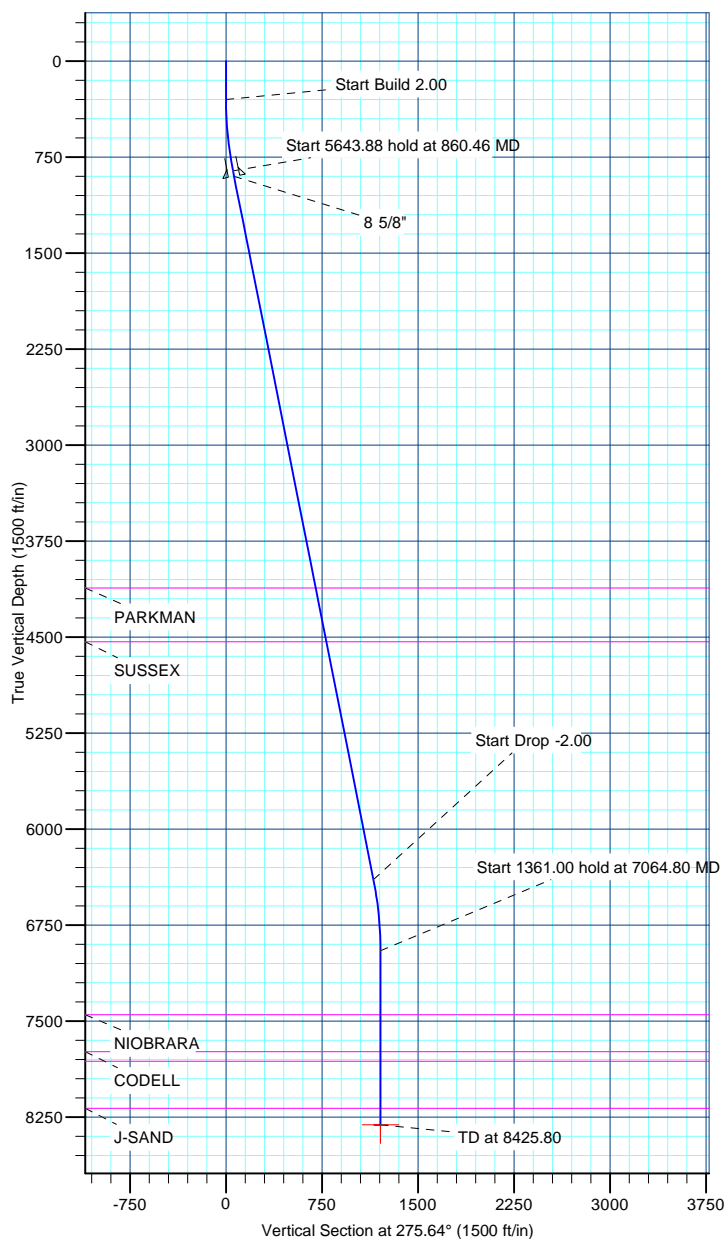
TVD	MD	Name	Size
900.00	904.41	8 5/8"	8.625

#### DESIGN TARGET DETAILS

Name	TVD	+N/-S	+E/-W	Northing	Easting	Latitude	Longitude	Shape
PBHL_DACONO 5-2	8311.00	118.59	-1200.58	1273236.92	3146182.73	40° 4' 56.078 N	104° 58' 39.259 W	Circle (Radius: 50.00)

#### SECTION DETAILS

MD	Inc	Azi	TVD	+N/-S	+E/-W	Dleg	TFace	VSect
0.00	0.00	0.00	0.00	0.00	0.00	0.00	0.00	0.00
300.00	0.00	0.00	300.00	0.00	0.00	0.00	0.00	0.00
860.46	11.21	275.64	856.89	5.37	-54.38	2.00	275.64	54.65
6504.34	11.21	275.64	6393.11	113.22	-1146.19	0.00	0.00	1151.77
7064.80	0.00	0.00	6950.00	118.59	-1200.58	2.00	180.00	1206.42
8425.80	0.00	0.00	8311.00	118.59	-1200.58	0.00	0.00	1206.42



# **US ROCKIES REGION PLANNING**

**COLORADO NORTHERN ZONE - 83**

**WELD\_DACANO 6-2-9F PAD**

**DACONO 5-2**

**OH**

**Plan: DACONO 5-2(wp01)**

## **Standard Planning Report**

**17 March, 2011**

<b>Database:</b>	EDM5000-RobertS-Local	<b>Local Co-ordinate Reference:</b>	Well DACONO 5-2
<b>Company:</b>	US ROCKIES REGION PLANNING	<b>TVD Reference:</b>	GL 5016' & KB 15' @ 5031.00ft (ASSUMED)
<b>Project:</b>	COLORADO NORTHERN ZONE - 83	<b>MD Reference:</b>	GL 5016' & KB 15' @ 5031.00ft (ASSUMED)
<b>Site:</b>	WELD_DACANO 6-2-9F PAD	<b>North Reference:</b>	Grid
<b>Well:</b>	DACONO 5-2	<b>Survey Calculation Method:</b>	Minimum Curvature
<b>Wellbore:</b>	OH		
<b>Design:</b>	DACONO 5-2(wp01)		

<b>Project</b>	COLORADO NORTHERN ZONE - 83, KERR MCGEE OIL & GAS ONSHORE LP		
<b>Map System:</b>	US State Plane 1983	<b>System Datum:</b>	Mean Sea Level
<b>Geo Datum:</b>	North American Datum 1983		
<b>Map Zone:</b>	Colorado Northern Zone		

<b>Site</b>	WELD_DACANO 6-2-9F PAD, SECTION 2 T1N R68W			
<b>Site Position:</b>		<b>Northing:</b>	1,273,198.12 usft	<b>Latitude:</b> 40° 4' 55.625 N
<b>From:</b>	Lat/Long	<b>Easting:</b>	3,147,383.39 usft	<b>Longitude:</b> 104° 58' 23.815 W
<b>Position Uncertainty:</b>	0.00 ft	<b>Slot Radius:</b>	13.200 in	<b>Grid Convergence:</b> 0.34 °

<b>Well</b>	DACONO 5-2			
<b>Well Position</b>	<b>+N/-S</b>	-79.79 ft	<b>Northing:</b>	1,273,118.33 usft
	<b>+E/-W</b>	-0.09 ft	<b>Easting:</b>	3,147,383.30 usft
<b>Position Uncertainty</b>	0.00 ft	<b>Wellhead Elevation:</b>		<b>Ground Level:</b> 5,016.00 ft

<b>Wellbore</b>	OH				
<b>Magnetics</b>	<b>Model Name</b>	<b>Sample Date</b>	<b>Declination (°)</b>	<b>Dip Angle (°)</b>	<b>Field Strength (nT)</b>
	IGRF2010	03/17/2011	8.98	66.77	52,965

<b>Design</b>	DACONO 5-2(wp01)			
<b>Audit Notes:</b>				
<b>Version:</b>	<b>Phase:</b>	PLAN	<b>Tie On Depth:</b>	0.00
<b>Vertical Section:</b>	<b>Depth From (TVD) (ft)</b>	<b>+N/-S (ft)</b>	<b>+E/-W (ft)</b>	<b>Direction (°)</b>
	0.00	0.00	0.00	275.64

<b>Plan Sections</b>										
Measured Depth (ft)	Inclination (°)	Azimuth (°)	Vertical Depth (ft)	+N/-S (ft)	+E/-W (ft)	Dogleg Rate (°/100ft)	Build Rate (°/100ft)	Turn Rate (°/100ft)	TFO (°)	Target
0.00	0.00	0.00	0.00	0.00	0.00	0.00	0.00	0.00	0.00	
300.00	0.00	0.00	300.00	0.00	0.00	0.00	0.00	0.00	0.00	
860.46	11.21	275.64	856.89	5.37	-54.38	2.00	2.00	0.00	275.64	
6,504.34	11.21	275.64	6,393.11	113.22	-1,146.19	0.00	0.00	0.00	0.00	
7,064.80	0.00	0.00	6,950.00	118.59	-1,200.58	2.00	-2.00	0.00	180.00	
8,425.80	0.00	0.00	8,311.00	118.59	-1,200.58	0.00	0.00	0.00	0.00	PBHL_DACONO 5-2

<b>Database:</b>	EDM5000-RobertS-Local	<b>Local Co-ordinate Reference:</b>	Well DACONO 5-2
<b>Company:</b>	US ROCKIES REGION PLANNING	<b>TVD Reference:</b>	GL 5016' & KB 15' @ 5031.00ft (ASSUMED)
<b>Project:</b>	COLORADO NORTHERN ZONE - 83	<b>MD Reference:</b>	GL 5016' & KB 15' @ 5031.00ft (ASSUMED)
<b>Site:</b>	WELD_DACANO 6-2-9F PAD	<b>North Reference:</b>	Grid
<b>Well:</b>	DACONO 5-2	<b>Survey Calculation Method:</b>	Minimum Curvature
<b>Wellbore:</b>	OH		
<b>Design:</b>	DACONO 5-2(wp01)		

Planned Survey									
Measured Depth (ft)	Inclination (°)	Azimuth (°)	Vertical Depth (ft)	+N/-S (ft)	+E/-W (ft)	Vertical Section (ft)	Dogleg Rate (°/100ft)	Build Rate (°/100ft)	Turn Rate (°/100ft)
0.00	0.00	0.00	0.00	0.00	0.00	0.00	0.00	0.00	0.00
100.00	0.00	0.00	100.00	0.00	0.00	0.00	0.00	0.00	0.00
200.00	0.00	0.00	200.00	0.00	0.00	0.00	0.00	0.00	0.00
300.00	0.00	0.00	300.00	0.00	0.00	0.00	0.00	0.00	0.00
<b>Start Build 2.00</b>									
400.00	2.00	275.64	399.98	0.17	-1.74	1.75	2.00	2.00	0.00
500.00	4.00	275.64	499.84	0.69	-6.94	6.98	2.00	2.00	0.00
600.00	6.00	275.64	599.45	1.54	-15.62	15.69	2.00	2.00	0.00
700.00	8.00	275.64	698.70	2.74	-27.74	27.88	2.00	2.00	0.00
800.00	10.00	275.64	797.47	4.28	-43.31	43.52	2.00	2.00	0.00
860.46	11.21	275.64	856.89	5.37	-54.38	54.65	2.00	2.00	0.00
<b>Start 5643.88 hold at 860.46 MD</b>									
900.00	11.21	275.64	895.68	6.13	-62.03	62.34	0.00	0.00	0.00
904.41	11.21	275.64	900.00	6.21	-62.89	63.19	0.00	0.00	0.00
<b>8 5/8"</b>									
1,000.00	11.21	275.64	993.77	8.04	-81.38	81.77	0.00	0.00	0.00
1,100.00	11.21	275.64	1,091.86	9.95	-100.72	101.21	0.00	0.00	0.00
1,200.00	11.21	275.64	1,189.95	11.86	-120.07	120.65	0.00	0.00	0.00
1,300.00	11.21	275.64	1,288.05	13.77	-139.41	140.09	0.00	0.00	0.00
1,400.00	11.21	275.64	1,386.14	15.68	-158.76	159.53	0.00	0.00	0.00
1,500.00	11.21	275.64	1,484.23	17.59	-178.10	178.97	0.00	0.00	0.00
1,600.00	11.21	275.64	1,582.32	19.50	-197.45	198.41	0.00	0.00	0.00
1,700.00	11.21	275.64	1,680.42	21.41	-216.79	217.85	0.00	0.00	0.00
1,800.00	11.21	275.64	1,778.51	23.32	-236.14	237.29	0.00	0.00	0.00
1,900.00	11.21	275.64	1,876.60	25.24	-255.48	256.73	0.00	0.00	0.00
2,000.00	11.21	275.64	1,974.69	27.15	-274.83	276.17	0.00	0.00	0.00
2,100.00	11.21	275.64	2,072.79	29.06	-294.17	295.61	0.00	0.00	0.00
2,200.00	11.21	275.64	2,170.88	30.97	-313.52	315.04	0.00	0.00	0.00
2,300.00	11.21	275.64	2,268.97	32.88	-332.86	334.48	0.00	0.00	0.00
2,400.00	11.21	275.64	2,367.06	34.79	-352.21	353.92	0.00	0.00	0.00
2,500.00	11.21	275.64	2,465.16	36.70	-371.55	373.36	0.00	0.00	0.00
2,600.00	11.21	275.64	2,563.25	38.61	-390.90	392.80	0.00	0.00	0.00
2,700.00	11.21	275.64	2,661.34	40.52	-410.24	412.24	0.00	0.00	0.00
2,800.00	11.21	275.64	2,759.43	42.43	-429.59	431.68	0.00	0.00	0.00
2,900.00	11.21	275.64	2,857.53	44.34	-448.93	451.12	0.00	0.00	0.00
3,000.00	11.21	275.64	2,955.62	46.25	-468.28	470.56	0.00	0.00	0.00
3,100.00	11.21	275.64	3,053.71	48.17	-487.62	490.00	0.00	0.00	0.00
3,200.00	11.21	275.64	3,151.80	50.08	-506.97	509.44	0.00	0.00	0.00
3,300.00	11.21	275.64	3,249.90	51.99	-526.31	528.87	0.00	0.00	0.00
3,400.00	11.21	275.64	3,347.99	53.90	-545.66	548.31	0.00	0.00	0.00
3,500.00	11.21	275.64	3,446.08	55.81	-565.00	567.75	0.00	0.00	0.00
3,600.00	11.21	275.64	3,544.17	57.72	-584.35	587.19	0.00	0.00	0.00
3,700.00	11.21	275.64	3,642.26	59.63	-603.69	606.63	0.00	0.00	0.00
3,800.00	11.21	275.64	3,740.36	61.54	-623.04	626.07	0.00	0.00	0.00
3,900.00	11.21	275.64	3,838.45	63.45	-642.38	645.51	0.00	0.00	0.00
4,000.00	11.21	275.64	3,936.54	65.36	-661.73	664.95	0.00	0.00	0.00
4,100.00	11.21	275.64	4,034.63	67.27	-681.07	684.39	0.00	0.00	0.00
4,182.95	11.21	275.64	4,116.00	68.86	-697.12	700.51	0.00	0.00	0.00
<b>PARKMAN</b>									
4,200.00	11.21	275.64	4,132.73	69.18	-700.42	703.83	0.00	0.00	0.00
4,300.00	11.21	275.64	4,230.82	71.10	-719.76	723.27	0.00	0.00	0.00
4,400.00	11.21	275.64	4,328.91	73.01	-739.11	742.71	0.00	0.00	0.00
4,500.00	11.21	275.64	4,427.00	74.92	-758.45	762.14	0.00	0.00	0.00
4,600.00	11.21	275.64	4,525.10	76.83	-777.80	781.58	0.00	0.00	0.00

<b>Database:</b>	EDM5000-RobertS-Local	<b>Local Co-ordinate Reference:</b>	Well DACONO 5-2
<b>Company:</b>	US ROCKIES REGION PLANNING	<b>TVD Reference:</b>	GL 5016' & KB 15' @ 5031.00ft (ASSUMED)
<b>Project:</b>	COLORADO NORTHERN ZONE - 83	<b>MD Reference:</b>	GL 5016' & KB 15' @ 5031.00ft (ASSUMED)
<b>Site:</b>	WELD_DACANO 6-2-9F PAD	<b>North Reference:</b>	Grid
<b>Well:</b>	DACONO 5-2	<b>Survey Calculation Method:</b>	Minimum Curvature
<b>Wellbore:</b>	OH		
<b>Design:</b>	DACONO 5-2(wp01)		

Planned Survey									
Measured Depth (ft)	Inclination (°)	Azimuth (°)	Vertical Depth (ft)	+N/-S (ft)	+E/-W (ft)	Vertical Section (ft)	Dogleg Rate (°/100ft)	Build Rate (°/100ft)	Turn Rate (°/100ft)
4,611.12	11.21	275.64	4,536.00	77.04	-779.95	783.74	0.00	0.00	0.00
<b>SUSSEX</b>									
4,700.00	11.21	275.64	4,623.19	78.74	-797.14	801.02	0.00	0.00	0.00
4,800.00	11.21	275.64	4,721.28	80.65	-816.49	820.46	0.00	0.00	0.00
4,900.00	11.21	275.64	4,819.37	82.56	-835.83	839.90	0.00	0.00	0.00
5,000.00	11.21	275.64	4,917.47	84.47	-855.18	859.34	0.00	0.00	0.00
5,100.00	11.21	275.64	5,015.56	86.38	-874.52	878.78	0.00	0.00	0.00
5,200.00	11.21	275.64	5,113.65	88.29	-893.87	898.22	0.00	0.00	0.00
5,300.00	11.21	275.64	5,211.74	90.20	-913.21	917.66	0.00	0.00	0.00
5,400.00	11.21	275.64	5,309.84	92.11	-932.56	937.10	0.00	0.00	0.00
5,500.00	11.21	275.64	5,407.93	94.03	-951.90	956.54	0.00	0.00	0.00
5,600.00	11.21	275.64	5,506.02	95.94	-971.25	975.98	0.00	0.00	0.00
5,700.00	11.21	275.64	5,604.11	97.85	-990.59	995.41	0.00	0.00	0.00
5,800.00	11.21	275.64	5,702.21	99.76	-1,009.94	1,014.85	0.00	0.00	0.00
5,900.00	11.21	275.64	5,800.30	101.67	-1,029.28	1,034.29	0.00	0.00	0.00
6,000.00	11.21	275.64	5,898.39	103.58	-1,048.63	1,053.73	0.00	0.00	0.00
6,100.00	11.21	275.64	5,996.48	105.49	-1,067.97	1,073.17	0.00	0.00	0.00
6,200.00	11.21	275.64	6,094.57	107.40	-1,087.32	1,092.61	0.00	0.00	0.00
6,300.00	11.21	275.64	6,192.67	109.31	-1,106.66	1,112.05	0.00	0.00	0.00
6,400.00	11.21	275.64	6,290.76	111.22	-1,126.01	1,131.49	0.00	0.00	0.00
6,500.00	11.21	275.64	6,388.85	113.13	-1,145.35	1,150.93	0.00	0.00	0.00
6,504.34	11.21	275.64	6,393.11	113.22	-1,146.19	1,151.77	0.00	0.00	0.00
<b>Start Drop -2.00</b>									
6,600.00	9.30	275.64	6,487.24	114.89	-1,163.14	1,168.80	2.00	-2.00	0.00
6,700.00	7.30	275.64	6,586.19	116.31	-1,177.49	1,183.23	2.00	-2.00	0.00
6,800.00	5.30	275.64	6,685.58	117.39	-1,188.41	1,194.19	2.00	-2.00	0.00
6,900.00	3.30	275.64	6,785.29	118.12	-1,195.86	1,201.68	2.00	-2.00	0.00
7,000.00	1.30	275.64	6,885.21	118.52	-1,199.85	1,205.69	2.00	-2.00	0.00
7,064.80	0.00	0.00	6,950.00	118.59	-1,200.58	1,206.42	2.00	-2.00	0.00
<b>Start 1361.00 hold at 7064.80 MD</b>									
7,100.00	0.00	0.00	6,985.20	118.59	-1,200.58	1,206.42	0.00	0.00	0.00
7,200.00	0.00	0.00	7,085.20	118.59	-1,200.58	1,206.42	0.00	0.00	0.00
7,300.00	0.00	0.00	7,185.20	118.59	-1,200.58	1,206.42	0.00	0.00	0.00
7,400.00	0.00	0.00	7,285.20	118.59	-1,200.58	1,206.42	0.00	0.00	0.00
7,500.00	0.00	0.00	7,385.20	118.59	-1,200.58	1,206.42	0.00	0.00	0.00
7,564.80	0.00	0.00	7,450.00	118.59	-1,200.58	1,206.42	0.00	0.00	0.00
<b>NIOBRARA</b>									
7,600.00	0.00	0.00	7,485.20	118.59	-1,200.58	1,206.42	0.00	0.00	0.00
7,700.00	0.00	0.00	7,585.20	118.59	-1,200.58	1,206.42	0.00	0.00	0.00
7,800.00	0.00	0.00	7,685.20	118.59	-1,200.58	1,206.42	0.00	0.00	0.00
7,853.80	0.00	0.00	7,739.00	118.59	-1,200.58	1,206.42	0.00	0.00	0.00
<b>CODELL</b>									
7,900.00	0.00	0.00	7,785.20	118.59	-1,200.58	1,206.42	0.00	0.00	0.00
7,928.80	0.00	0.00	7,814.00	118.59	-1,200.58	1,206.42	0.00	0.00	0.00
<b>GREENHORN</b>									
8,000.00	0.00	0.00	7,885.20	118.59	-1,200.58	1,206.42	0.00	0.00	0.00
8,100.00	0.00	0.00	7,985.20	118.59	-1,200.58	1,206.42	0.00	0.00	0.00
8,200.00	0.00	0.00	8,085.20	118.59	-1,200.58	1,206.42	0.00	0.00	0.00
8,295.80	0.00	0.00	8,181.00	118.59	-1,200.58	1,206.42	0.00	0.00	0.00
<b>J-SAND</b>									
8,300.00	0.00	0.00	8,185.20	118.59	-1,200.58	1,206.42	0.00	0.00	0.00
8,400.00	0.00	0.00	8,285.20	118.59	-1,200.58	1,206.42	0.00	0.00	0.00
8,425.80	0.00	0.00	8,311.00	118.59	-1,200.58	1,206.42	0.00	0.00	0.00

<b>Database:</b>	EDM5000-RobertS-Local	<b>Local Co-ordinate Reference:</b>	Well DACONO 5-2
<b>Company:</b>	US ROCKIES REGION PLANNING	<b>TVD Reference:</b>	GL 5016' & KB 15' @ 5031.00ft (ASSUMED)
<b>Project:</b>	COLORADO NORTHERN ZONE - 83	<b>MD Reference:</b>	GL 5016' & KB 15' @ 5031.00ft (ASSUMED)
<b>Site:</b>	WELD_DACANO 6-2-9F PAD	<b>North Reference:</b>	Grid
<b>Well:</b>	DACONO 5-2	<b>Survey Calculation Method:</b>	Minimum Curvature
<b>Wellbore:</b>	OH		
<b>Design:</b>	DACONO 5-2(wp01)		

Planned Survey									
Measured Depth (ft)	Inclination (°)	Azimuth (°)	Vertical Depth (ft)	+N/-S (ft)	+E/-W (ft)	Vertical Section (ft)	Dogleg Rate (°/100ft)	Build Rate (°/100ft)	Turn Rate (°/100ft)
PBHL_DACONO 5-2									

Design Targets									
Target Name	Dip Angle (°)	Dip Dir. (°)	TVD (ft)	+N/-S (ft)	+E/-W (ft)	Northing (usft)	Easting (usft)	Latitude	Longitude
- hit/miss target									
- Shape									
PBHL_DACONO 5-2	0.00	0.00	8,311.00	118.59	-1,200.58	1,273,236.92	3,146,182.73	40° 4' 56.078 N	104° 58' 39.259 W
- plan hits target center									
- Circle (radius 50.00)									

Casing Points					
Measured Depth (ft)	Vertical Depth (ft)	Name	Casing Diameter (in)	Hole Diameter (in)	
904.41	900.00	8 5/8"	8.625	11.000	

Formations						
Measured Depth (ft)	Vertical Depth (ft)	Name	Lithology	Dip (°)	Dip Direction (°)	
4,182.95	4,116.00	PARKMAN				
4,611.12	4,536.00	SUSSEX				
7,564.80	7,450.00	NIOBRARA				
7,853.80	7,739.00	CODELL				
7,928.80	7,814.00	GREENHORN				
8,295.80	8,181.00	J-SAND				

Plan Annotations					
Measured Depth (ft)	Vertical Depth (ft)	Local Coordinates		Comment	
		+N/-S (ft)	+E/-W (ft)		
300.00	300.00	0.00	0.00	Start Build 2.00	
860.46	856.89	5.37	-54.38	Start 5643.88 hold at 860.46 MD	
6,504.34	6,393.11	113.22	-1,146.19	Start Drop -2.00	
7,064.80	6,950.00	118.59	-1,200.58	Start 1361.00 hold at 7064.80 MD	
8,425.80	8,311.00	118.59	-1,200.58	TD at 8425.80	