

Project: COLORADO NORTHERN ZONE - 83  
Site: WELD\_DACANO 6-2-9F PAD  
Well: DACONO 4-2  
Wellbore: OH  
Section: SECTION 2 T1N R68W  
SHL:  
Design: DACONO 4-2(wp01)  
Latitude: 40° 4' 55.329 N  
Longitude: 104° 58' 23.819 W  
GL: 5016.00  
KB: GL 5016' & KB 15' @ 5031.00ft (ASSUMED)

## FORMATION TOP DETAILS

TVDPath	MDPath	Formation
4116.00	4276.06	PARKMAN
4536.00	4716.88	SUSSEX
7450.00	7721.41	NIOBRARA
7739.00	8010.41	CODELL
7814.00	8085.41	GREENHORN
8181.00	8452.41	J-SAND



Azimuths to Grid North  
True North: -0.34°  
Magnetic North: 8.64°

Magnetic Field  
Strength: 52965.4snT  
Dip Angle: 66.77°  
Date: 03/17/2011  
Model: IGRF2010

## WELL DETAILS: DACONO 4-2

+N/-S	+E/-W	Northing	Easting	Ground Level: 5016.00 Latitude	Longitude	Slot
0.00	0.00	1273168.24	3147383.29	40° 4' 55.329 N	104° 58' 23.819 W	

## CASING DETAILS

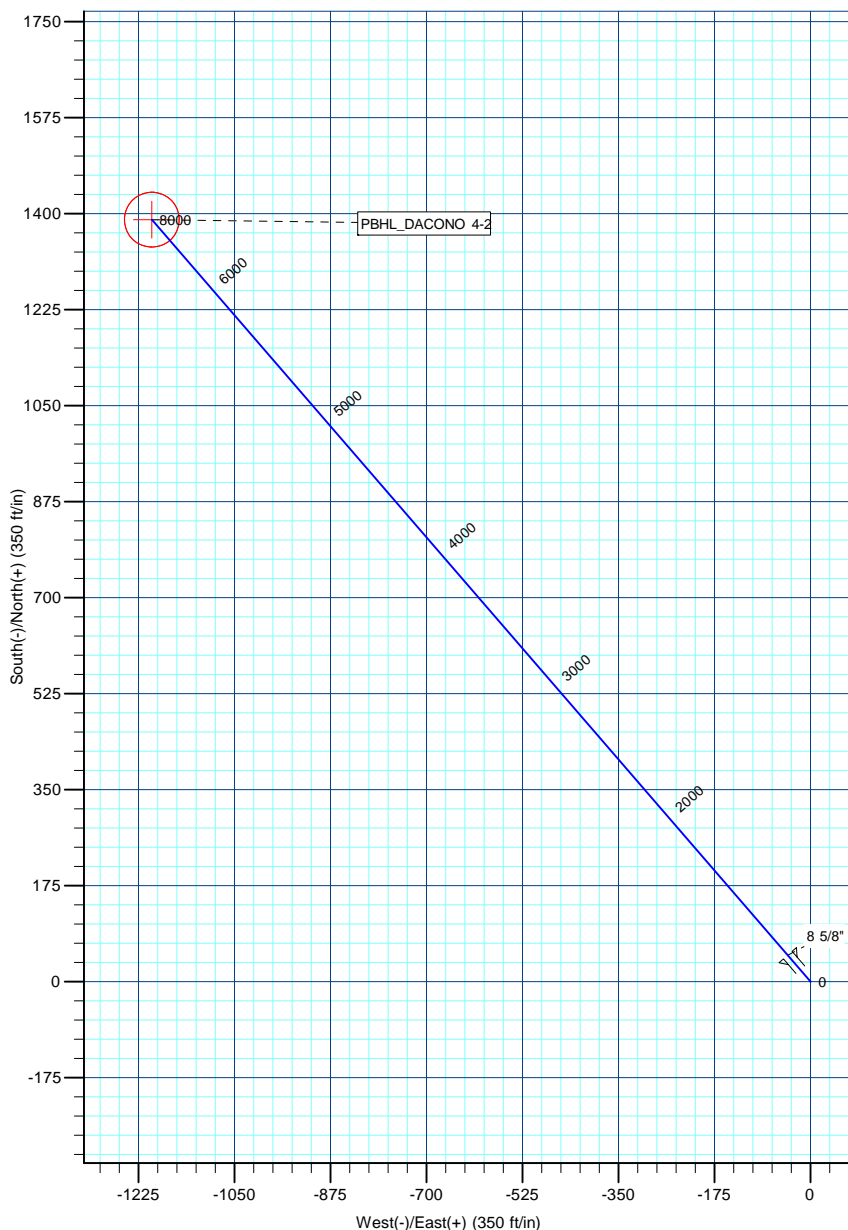
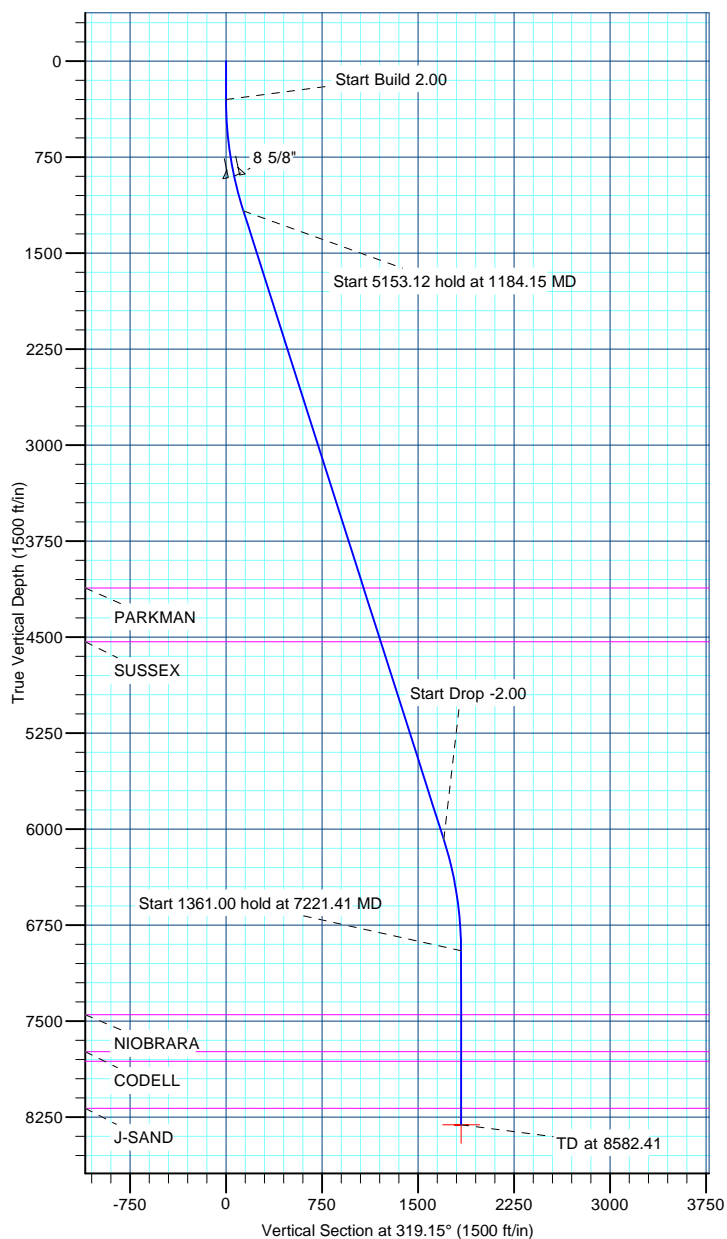
TVD	MD	Name	Size
900.00	904.48	8 5/8"	8.625

## DESIGN TARGET DETAILS

Name	TVD	+N/-S	+E/-W	Northing	Easting	Latitude	Longitude	Shape
PBHL_DACONO 4-2	8311.00	1388.85	-1200.78	1274557.08	3146182.51	40° 5' 9.125 N	104° 58' 39.162 W	Circle (Radius: 50.00)

## SECTION DETAILS

MD	Inc	Azi	TVD	+N/-S	+E/-W	Dleg	TFace	VSect
0.00	0.00	0.00	0.00	0.00	0.00	0.00	0.00	0.00
300.00	0.00	0.00	300.00	0.00	0.00	0.00	0.00	0.00
1184.15	17.68	319.15	1170.18	102.39	-88.53	2.00	319.15	135.36
6337.27	17.68	319.15	6079.82	1286.45	-1112.26	0.00	0.00	1700.61
7221.41	0.00	0.00	6950.00	1388.85	-1200.78	2.00	180.00	1835.97
8582.41	0.00	0.00	8311.00	1388.85	-1200.78	0.00	0.00	1835.97



# **US ROCKIES REGION PLANNING**

**COLORADO NORTHERN ZONE - 83**

**WELD\_DACANO 6-2-9F PAD**

**DACONO 4-2**

**OH**

**Plan: DACONO 4-2(wp01)**

## **Standard Planning Report**

**17 March, 2011**

<b>Database:</b>	EDM5000-RobertS-Local	<b>Local Co-ordinate Reference:</b>	Well DACONO 4-2
<b>Company:</b>	US ROCKIES REGION PLANNING	<b>TVD Reference:</b>	GL 5016' & KB 15' @ 5031.00ft (ASSUMED)
<b>Project:</b>	COLORADO NORTHERN ZONE - 83	<b>MD Reference:</b>	GL 5016' & KB 15' @ 5031.00ft (ASSUMED)
<b>Site:</b>	WELD_DACANO 6-2-9F PAD	<b>North Reference:</b>	Grid
<b>Well:</b>	DACONO 4-2	<b>Survey Calculation Method:</b>	Minimum Curvature
<b>Wellbore:</b>	OH		
<b>Design:</b>	DACONO 4-2(wp01)		

<b>Project</b>	COLORADO NORTHERN ZONE - 83, KERR MCGEE OIL & GAS ONSHORE LP		
<b>Map System:</b>	US State Plane 1983	<b>System Datum:</b>	Mean Sea Level
<b>Geo Datum:</b>	North American Datum 1983		
<b>Map Zone:</b>	Colorado Northern Zone		

<b>Site</b>	WELD_DACANO 6-2-9F PAD, SECTION 2 T1N R68W			
<b>Site Position:</b>		<b>Northing:</b>	1,273,198.12 usft	<b>Latitude:</b> 40° 4' 55.625 N
<b>From:</b>	Lat/Long	<b>Easting:</b>	3,147,383.39 usft	<b>Longitude:</b> 104° 58' 23.815 W
<b>Position Uncertainty:</b>	0.00 ft	<b>Slot Radius:</b>	13.200 in	<b>Grid Convergence:</b> 0.34 °

<b>Well</b>	DACONO 4-2			
<b>Well Position</b>	<b>+N/-S</b>	-29.88 ft	<b>Northing:</b>	1,273,168.24 usft
	<b>+E/-W</b>	-0.10 ft	<b>Easting:</b>	3,147,383.29 usft
<b>Position Uncertainty</b>	0.00 ft	<b>Wellhead Elevation:</b>		<b>Latitude:</b> 40° 4' 55.329 N
				<b>Longitude:</b> 104° 58' 23.819 W
				<b>Ground Level:</b> 5,016.00 ft

<b>Wellbore</b>	OH				
<b>Magnetics</b>	<b>Model Name</b>	<b>Sample Date</b>	<b>Declination (°)</b>	<b>Dip Angle (°)</b>	<b>Field Strength (nT)</b>
	IGRF2010	03/17/2011	8.98	66.77	52,965

<b>Design</b>	DACONO 4-2(wp01)			
<b>Audit Notes:</b>				
<b>Version:</b>	<b>Phase:</b>	PLAN	<b>Tie On Depth:</b>	0.00
<b>Vertical Section:</b>	<b>Depth From (TVD)</b>	<b>+N/-S</b>	<b>+E/-W</b>	<b>Direction</b>
	(ft)	(ft)	(ft)	(°)
	0.00	0.00	0.00	319.15

<b>Plan Sections</b>										
Measured Depth (ft)	Inclination (°)	Azimuth (°)	Vertical Depth (ft)	+N/-S (ft)	+E/-W (ft)	Dogleg Rate (°/100ft)	Build Rate (°/100ft)	Turn Rate (°/100ft)	TFO (°)	Target
0.00	0.00	0.00	0.00	0.00	0.00	0.00	0.00	0.00	0.00	
300.00	0.00	0.00	300.00	0.00	0.00	0.00	0.00	0.00	0.00	
1,184.15	17.68	319.15	1,170.18	102.39	-88.53	2.00	2.00	0.00	319.15	
6,337.27	17.68	319.15	6,079.82	1,286.45	-1,112.26	0.00	0.00	0.00	0.00	
7,221.41	0.00	0.00	6,950.00	1,388.85	-1,200.78	2.00	-2.00	0.00	180.00	
8,582.41	0.00	0.00	8,311.00	1,388.85	-1,200.78	0.00	0.00	0.00	0.00	PBHL_DACONO 4-2

<b>Database:</b>	EDM5000-RobertS-Local	<b>Local Co-ordinate Reference:</b>	Well DACONO 4-2
<b>Company:</b>	US ROCKIES REGION PLANNING	<b>TVD Reference:</b>	GL 5016' & KB 15' @ 5031.00ft (ASSUMED)
<b>Project:</b>	COLORADO NORTHERN ZONE - 83	<b>MD Reference:</b>	GL 5016' & KB 15' @ 5031.00ft (ASSUMED)
<b>Site:</b>	WELD_DACANO 6-2-9F PAD	<b>North Reference:</b>	Grid
<b>Well:</b>	DACONO 4-2	<b>Survey Calculation Method:</b>	Minimum Curvature
<b>Wellbore:</b>	OH		
<b>Design:</b>	DACONO 4-2(wp01)		

Planned Survey									
Measured Depth (ft)	Inclination (°)	Azimuth (°)	Vertical Depth (ft)	+N/-S (ft)	+E/-W (ft)	Vertical Section (ft)	Dogleg Rate (°/100ft)	Build Rate (°/100ft)	Turn Rate (°/100ft)
0.00	0.00	0.00	0.00	0.00	0.00	0.00	0.00	0.00	0.00
100.00	0.00	0.00	100.00	0.00	0.00	0.00	0.00	0.00	0.00
200.00	0.00	0.00	200.00	0.00	0.00	0.00	0.00	0.00	0.00
300.00	0.00	0.00	300.00	0.00	0.00	0.00	0.00	0.00	0.00
<b>Start Build 2.00</b>									
400.00	2.00	319.15	399.98	1.32	-1.14	1.75	2.00	2.00	0.00
500.00	4.00	319.15	499.84	5.28	-4.56	6.98	2.00	2.00	0.00
600.00	6.00	319.15	599.45	11.87	-10.26	15.69	2.00	2.00	0.00
700.00	8.00	319.15	698.70	21.09	-18.23	27.88	2.00	2.00	0.00
800.00	10.00	319.15	797.47	32.92	-28.47	43.52	2.00	2.00	0.00
900.00	12.00	319.15	895.62	47.36	-40.94	62.60	2.00	2.00	0.00
904.48	12.09	319.15	900.00	48.06	-41.55	63.54	2.00	2.00	0.00
<b>8 5/8"</b>									
1,000.00	14.00	319.15	993.06	64.37	-55.66	85.10	2.00	2.00	0.00
1,100.00	16.00	319.15	1,089.64	83.95	-72.58	110.98	2.00	2.00	0.00
1,184.15	17.68	319.15	1,170.18	102.39	-88.53	135.36	2.00	2.00	0.00
<b>Start 5153.12 hold at 1184.15 MD</b>									
1,200.00	17.68	319.15	1,185.28	106.03	-91.68	140.17	0.00	0.00	0.00
1,300.00	17.68	319.15	1,280.56	129.01	-111.54	170.55	0.00	0.00	0.00
1,400.00	17.68	319.15	1,375.83	151.99	-131.41	200.92	0.00	0.00	0.00
1,500.00	17.68	319.15	1,471.11	174.97	-151.28	231.30	0.00	0.00	0.00
1,600.00	17.68	319.15	1,566.38	197.94	-171.14	261.67	0.00	0.00	0.00
1,700.00	17.68	319.15	1,661.66	220.92	-191.01	292.05	0.00	0.00	0.00
1,800.00	17.68	319.15	1,756.93	243.90	-210.87	322.42	0.00	0.00	0.00
1,900.00	17.68	319.15	1,852.21	266.88	-230.74	352.80	0.00	0.00	0.00
2,000.00	17.68	319.15	1,947.48	289.86	-250.61	383.17	0.00	0.00	0.00
2,100.00	17.68	319.15	2,042.76	312.83	-270.47	413.55	0.00	0.00	0.00
2,200.00	17.68	319.15	2,138.03	335.81	-290.34	443.92	0.00	0.00	0.00
2,300.00	17.68	319.15	2,233.31	358.79	-310.20	474.30	0.00	0.00	0.00
2,400.00	17.68	319.15	2,328.58	381.77	-330.07	504.67	0.00	0.00	0.00
2,500.00	17.68	319.15	2,423.86	404.74	-349.94	535.05	0.00	0.00	0.00
2,600.00	17.68	319.15	2,519.13	427.72	-369.80	565.42	0.00	0.00	0.00
2,700.00	17.68	319.15	2,614.41	450.70	-389.67	595.79	0.00	0.00	0.00
2,800.00	17.68	319.15	2,709.69	473.68	-409.54	626.17	0.00	0.00	0.00
2,900.00	17.68	319.15	2,804.96	496.65	-429.40	656.54	0.00	0.00	0.00
3,000.00	17.68	319.15	2,900.24	519.63	-449.27	686.92	0.00	0.00	0.00
3,100.00	17.68	319.15	2,995.51	542.61	-469.13	717.29	0.00	0.00	0.00
3,200.00	17.68	319.15	3,090.79	565.59	-489.00	747.67	0.00	0.00	0.00
3,300.00	17.68	319.15	3,186.06	588.56	-508.87	778.04	0.00	0.00	0.00
3,400.00	17.68	319.15	3,281.34	611.54	-528.73	808.42	0.00	0.00	0.00
3,500.00	17.68	319.15	3,376.61	634.52	-548.60	838.79	0.00	0.00	0.00
3,600.00	17.68	319.15	3,471.89	657.50	-568.47	869.17	0.00	0.00	0.00
3,700.00	17.68	319.15	3,567.16	680.47	-588.33	899.54	0.00	0.00	0.00
3,800.00	17.68	319.15	3,662.44	703.45	-608.20	929.92	0.00	0.00	0.00
3,900.00	17.68	319.15	3,757.71	726.43	-628.06	960.29	0.00	0.00	0.00
4,000.00	17.68	319.15	3,852.99	749.41	-647.93	990.67	0.00	0.00	0.00
4,100.00	17.68	319.15	3,948.26	772.38	-667.80	1,021.04	0.00	0.00	0.00
4,200.00	17.68	319.15	4,043.54	795.36	-687.66	1,051.42	0.00	0.00	0.00
4,276.06	17.68	319.15	4,116.00	812.84	-702.77	1,074.52	0.00	0.00	0.00
<b>PARKMAN</b>									
4,300.00	17.68	319.15	4,138.81	818.34	-707.53	1,081.79	0.00	0.00	0.00
4,400.00	17.68	319.15	4,234.09	841.32	-727.40	1,112.17	0.00	0.00	0.00
4,500.00	17.68	319.15	4,329.36	864.30	-747.26	1,142.54	0.00	0.00	0.00
4,600.00	17.68	319.15	4,424.64	887.27	-767.13	1,172.92	0.00	0.00	0.00

<b>Database:</b>	EDM5000-RobertS-Local	<b>Local Co-ordinate Reference:</b>	Well DACONO 4-2
<b>Company:</b>	US ROCKIES REGION PLANNING	<b>TVD Reference:</b>	GL 5016' & KB 15' @ 5031.00ft (ASSUMED)
<b>Project:</b>	COLORADO NORTHERN ZONE - 83	<b>MD Reference:</b>	GL 5016' & KB 15' @ 5031.00ft (ASSUMED)
<b>Site:</b>	WELD_DACANO 6-2-9F PAD	<b>North Reference:</b>	Grid
<b>Well:</b>	DACONO 4-2	<b>Survey Calculation Method:</b>	Minimum Curvature
<b>Wellbore:</b>	OH		
<b>Design:</b>	DACONO 4-2(wp01)		

Planned Survey									
Measured Depth (ft)	Inclination (°)	Azimuth (°)	Vertical Depth (ft)	+N/-S (ft)	+E/-W (ft)	Vertical Section (ft)	Dogleg Rate (°/100ft)	Build Rate (°/100ft)	Turn Rate (°/100ft)
4,700.00	17.68	319.15	4,519.91	910.25	-786.99	1,203.29	0.00	0.00	0.00
4,716.88	17.68	319.15	4,536.00	914.13	-790.35	1,208.42	0.00	0.00	0.00
<b>SUSSEX</b>									
4,800.00	17.68	319.15	4,615.19	933.23	-806.86	1,233.67	0.00	0.00	0.00
4,900.00	17.68	319.15	4,710.46	956.21	-826.73	1,264.04	0.00	0.00	0.00
5,000.00	17.68	319.15	4,805.74	979.18	-846.59	1,294.42	0.00	0.00	0.00
5,100.00	17.68	319.15	4,901.01	1,002.16	-866.46	1,324.79	0.00	0.00	0.00
5,200.00	17.68	319.15	4,996.29	1,025.14	-886.33	1,355.17	0.00	0.00	0.00
5,300.00	17.68	319.15	5,091.57	1,048.12	-906.19	1,385.54	0.00	0.00	0.00
5,400.00	17.68	319.15	5,186.84	1,071.09	-926.06	1,415.92	0.00	0.00	0.00
5,500.00	17.68	319.15	5,282.12	1,094.07	-945.92	1,446.29	0.00	0.00	0.00
5,600.00	17.68	319.15	5,377.39	1,117.05	-965.79	1,476.67	0.00	0.00	0.00
5,700.00	17.68	319.15	5,472.67	1,140.03	-985.66	1,507.04	0.00	0.00	0.00
5,800.00	17.68	319.15	5,567.94	1,163.00	-1,005.52	1,537.42	0.00	0.00	0.00
5,900.00	17.68	319.15	5,663.22	1,185.98	-1,025.39	1,567.79	0.00	0.00	0.00
6,000.00	17.68	319.15	5,758.49	1,208.96	-1,045.26	1,598.17	0.00	0.00	0.00
6,100.00	17.68	319.15	5,853.77	1,231.94	-1,065.12	1,628.54	0.00	0.00	0.00
6,200.00	17.68	319.15	5,949.04	1,254.91	-1,084.99	1,658.92	0.00	0.00	0.00
6,300.00	17.68	319.15	6,044.32	1,277.89	-1,104.85	1,689.29	0.00	0.00	0.00
6,337.27	17.68	319.15	6,079.82	1,286.45	-1,112.26	1,700.61	0.00	0.00	0.00
<b>Start Drop -2.00</b>									
6,400.00	16.43	319.15	6,139.80	1,300.37	-1,124.29	1,719.01	2.00	-2.00	0.00
6,500.00	14.43	319.15	6,236.19	1,320.50	-1,141.69	1,745.61	2.00	-2.00	0.00
6,600.00	12.43	319.15	6,333.45	1,338.06	-1,156.88	1,768.83	2.00	-2.00	0.00
6,700.00	10.43	319.15	6,431.46	1,353.05	-1,169.84	1,788.65	2.00	-2.00	0.00
6,800.00	8.43	319.15	6,530.11	1,365.44	-1,180.55	1,805.03	2.00	-2.00	0.00
6,900.00	6.43	319.15	6,629.26	1,375.22	-1,189.00	1,817.96	2.00	-2.00	0.00
7,000.00	4.43	319.15	6,728.81	1,382.38	-1,195.19	1,827.42	2.00	-2.00	0.00
7,100.00	2.43	319.15	6,828.62	1,386.90	-1,199.10	1,833.40	2.00	-2.00	0.00
7,200.00	0.43	319.15	6,928.59	1,388.79	-1,200.73	1,835.89	2.00	-2.00	0.00
7,221.41	0.00	0.00	6,950.00	1,388.85	-1,200.78	1,835.97	2.00	-2.00	0.00
<b>Start 1361.00 hold at 7221.41 MD</b>									
7,300.00	0.00	0.00	7,028.59	1,388.85	-1,200.78	1,835.97	0.00	0.00	0.00
7,400.00	0.00	0.00	7,128.59	1,388.85	-1,200.78	1,835.97	0.00	0.00	0.00
7,500.00	0.00	0.00	7,228.59	1,388.85	-1,200.78	1,835.97	0.00	0.00	0.00
7,600.00	0.00	0.00	7,328.59	1,388.85	-1,200.78	1,835.97	0.00	0.00	0.00
7,700.00	0.00	0.00	7,428.59	1,388.85	-1,200.78	1,835.97	0.00	0.00	0.00
7,721.41	0.00	0.00	7,450.00	1,388.85	-1,200.78	1,835.97	0.00	0.00	0.00
<b>NIOBRARA</b>									
7,800.00	0.00	0.00	7,528.59	1,388.85	-1,200.78	1,835.97	0.00	0.00	0.00
7,900.00	0.00	0.00	7,628.59	1,388.85	-1,200.78	1,835.97	0.00	0.00	0.00
8,000.00	0.00	0.00	7,728.59	1,388.85	-1,200.78	1,835.97	0.00	0.00	0.00
8,010.41	0.00	0.00	7,739.00	1,388.85	-1,200.78	1,835.97	0.00	0.00	0.00
<b>CODELL</b>									
8,085.41	0.00	0.00	7,814.00	1,388.85	-1,200.78	1,835.97	0.00	0.00	0.00
<b>GREENHORN</b>									
8,100.00	0.00	0.00	7,828.59	1,388.85	-1,200.78	1,835.97	0.00	0.00	0.00
8,200.00	0.00	0.00	7,928.59	1,388.85	-1,200.78	1,835.97	0.00	0.00	0.00
8,300.00	0.00	0.00	8,028.59	1,388.85	-1,200.78	1,835.97	0.00	0.00	0.00
8,400.00	0.00	0.00	8,128.59	1,388.85	-1,200.78	1,835.97	0.00	0.00	0.00
8,452.41	0.00	0.00	8,181.00	1,388.85	-1,200.78	1,835.97	0.00	0.00	0.00
<b>J-SAND</b>									
8,500.00	0.00	0.00	8,228.59	1,388.85	-1,200.78	1,835.97	0.00	0.00	0.00

<b>Database:</b>	EDM5000-RobertS-Local	<b>Local Co-ordinate Reference:</b>	Well DACONO 4-2
<b>Company:</b>	US ROCKIES REGION PLANNING	<b>TVD Reference:</b>	GL 5016' & KB 15' @ 5031.00ft (ASSUMED)
<b>Project:</b>	COLORADO NORTHERN ZONE - 83	<b>MD Reference:</b>	GL 5016' & KB 15' @ 5031.00ft (ASSUMED)
<b>Site:</b>	WELD_DACANO 6-2-9F PAD	<b>North Reference:</b>	Grid
<b>Well:</b>	DACONO 4-2	<b>Survey Calculation Method:</b>	Minimum Curvature
<b>Wellbore:</b>	OH		
<b>Design:</b>	DACONO 4-2(wp01)		

Planned Survey									
Measured Depth (ft)	Inclination (°)	Azimuth (°)	Vertical Depth (ft)	+N/-S (ft)	+E/-W (ft)	Vertical Section (ft)	Dogleg Rate (°/100ft)	Build Rate (°/100ft)	Turn Rate (°/100ft)
8,582.41	0.00	0.00	8,311.00	1,388.85	-1,200.78	1,835.97	0.00	0.00	0.00
PBHL_DACONO 4-2									

Design Targets									
Target Name - hit/miss target - Shape	Dip Angle (°)	Dip Dir. (°)	TVD (ft)	+N/-S (ft)	+E/-W (ft)	Northing (usft)	Easting (usft)	Latitude	Longitude
PBHL_DACONO 4-2 - plan hits target center - Circle (radius 50.00)	0.00	0.00	8,311.00	1,388.85	-1,200.78	1,274,557.08	3,146,182.51	40° 5' 9.125 N	104° 58' 39.162 W

Casing Points					
Measured Depth (ft)	Vertical Depth (ft)	Name	Casing Diameter (in)	Hole Diameter (in)	
904.48	900.00	8 5/8"	8.625	11.000	

Formations						
Measured Depth (ft)	Vertical Depth (ft)	Name	Lithology	Dip (°)	Dip Direction (°)	
4,276.06	4,116.00	PARKMAN				
4,716.88	4,536.00	SUSSEX				
7,721.41	7,450.00	NIOBRARA				
8,010.41	7,739.00	CODELL				
8,085.41	7,814.00	GREENHORN				
8,452.41	8,181.00	J-SAND				

Plan Annotations				
Measured Depth (ft)	Vertical Depth (ft)	Local Coordinates		Comment
		+N/-S (ft)	+E/-W (ft)	
300.00	300.00	0.00	0.00	Start Build 2.00
1,184.15	1,170.18	102.39	-88.53	Start 5153.12 hold at 1184.15 MD
6,337.27	6,079.82	1,286.45	-1,112.26	Start Drop -2.00
7,221.41	6,950.00	1,388.85	-1,200.78	Start 1361.00 hold at 7221.41 MD
8,582.41	8,311.00	1,388.85	-1,200.78	TD at 8582.41