

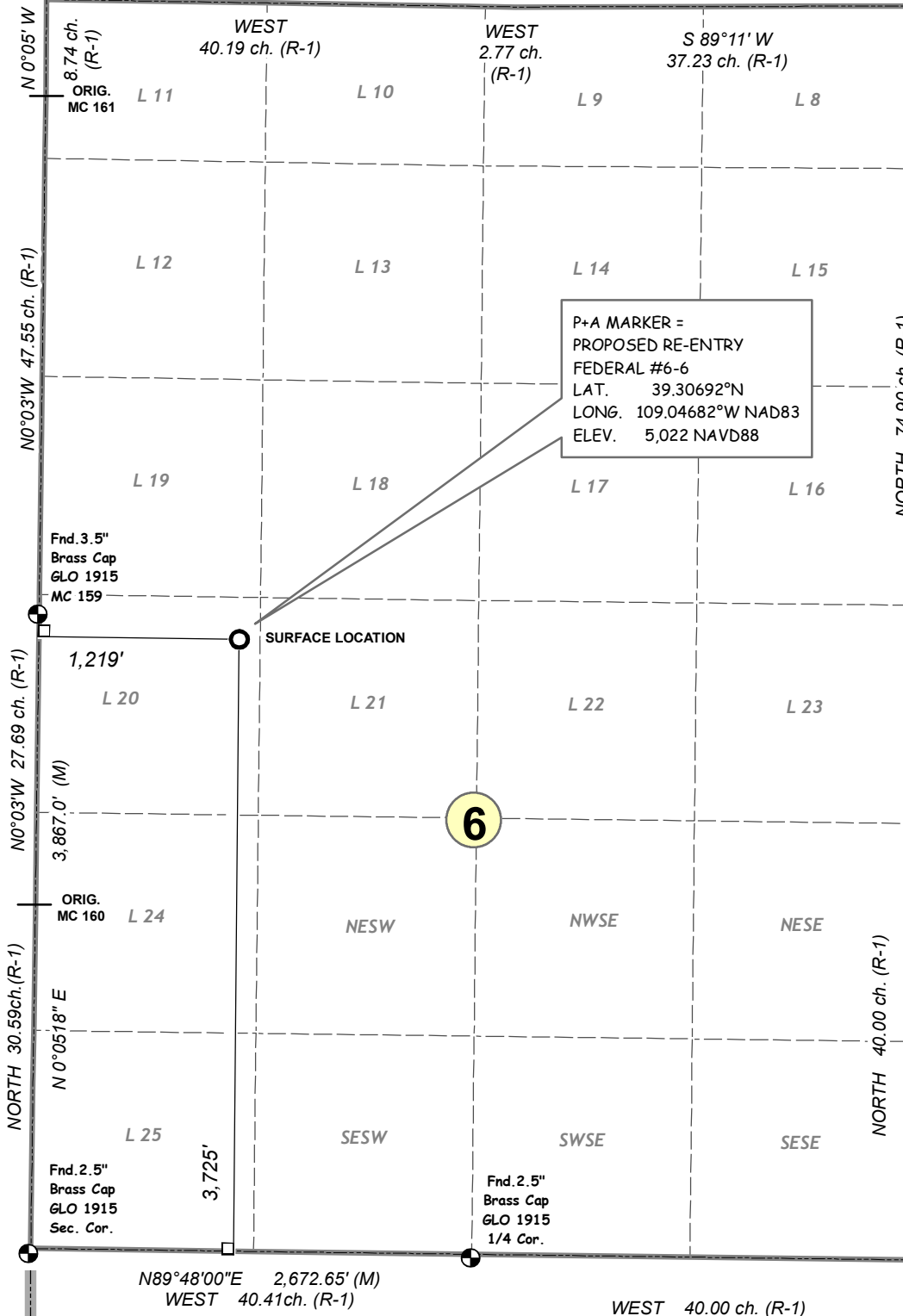
UTAH
COLO.

**SOUTHWESTERN ENERGY VENTURES COMPANY, LLC
FEDERAL #6-6**

SURFACE HOLE:
3,725' FSL, 1,219' FWL
SECTION 6,
T-9-S, R-104-W, 6TH P.M.,
MESA COUNTY
COLORADO
LAT. 39.30692°N
LONG. 109.04682°W NAD83
ELEVATION AT STAKE
5,022 NAVD88

NOTES:

1. SURFACE USE IS P+A WELL LOCATION AND GRAZING.
2. SEE ATTACHED ADDENDUM FOR IMPROVEMENTS, AND PROPERTY LINES WITHIN 400' OF PROPOSED WELL.
3. DATE OF SURVEY 4 May 2010.
4. BASIS OF ELEVATION = NAVD88 AS PREDICTED BY GEOID09.
5. PDOP OF GPS OBSERVATION OF WELL STAKE = 1.6
6. FOOTAGE DIMENSION FIELD MEASURED AT 90° FROM SECTION LINES.
7. (R-1) = Record Survey G.L.O. Plat approved APRIL 26, 1918.
8. (M) = FIELD MEASURED.
9. BASIS OF BEARING: As Measured by GPS between Found monuments at the Southwest corner and the South Quarter corner of Section 6, T-9-S, R-104-W, 6TH P.M., Line Bears N 89°48'00" E a distance of 2,672.65 ft.



THIS IS TO CERTIFY THAT THE ABOVE PLAT WAS PREPARED FROM FIELD NOTES OF ACTUAL SURVEYS MADE BY ME OR UNDER MY DIRECT SUPERVISION AND THAT SAME ARE TRUE AND CORRECT TO THE BEST OF MY KNOWLEDGE AND BELIEF

DAVID ALEXANDER JOHNSON LICENSE NO. 33648 DATE
STATE OF COLORADO



SEV001SD.mxd 2010/05/25

