



SUPERIOR
Hays,
Kansas

MICRO
LOG

Company		MULL DRILLING COMPANY, INC.	
Well		APC SCHERLER #1-15	
Field			
County		KIOWA	
State		COLORADO	
Location:		API # : 05-061-06855-0000	
		1885' FNL & 1424' FEL SW/4 - NE/4	
Permanent Datum		GROUND LEVEL	Elevation 4117
Log Measured From		KELLY BUSHING 11' A.G.L.	
Drilling Measured From		KELLY BUSHING	
SEC 15 TWP 17S RGE 45W		Other Services CDL/CNL/PE DIL/SON	
Date	4/5/11		Elevation K.B. 4128 D.F. 4126 G.L. 4117
Run Number	TWO		
Depth Driller	5380		
Depth Logger	5382		
Bottom Logged Interval	5366		
Top Log Interval	3600		
Casing Driller	8 5/8" @ 319		
Casing Logger	312		
Bit Size	7 7/8		
Type Fluid in Hole	CHEMICAL MUD	CHLORIDES 2300 PPM	
Density / Viscosity	9.0/49		
pH / Fluid Loss	10.5/8.0		
Source of Sample	FLOWLINE		
Rin @ Meas. Temp	1.20 @ 83F		
Rmf @ Meas. Temp	0.90 @ 83F		
Rmc @ Meas. Temp	1.44 @ 83F		
Source of Rmf / Rmc	MEASURED		
Rin @ BHT	0.78 @ 128F		
Time Circulation Stopped	2 HOURS		
Time Logger on Bottom			
Maximum Recorded Temperature	128F		
Equipment Number	680		
Location	HAYS, KS.		
Recorded By	JEFF GRONEMEG		
Witnessed By	PHIL ASKEY		

<<< Fold Here >>>

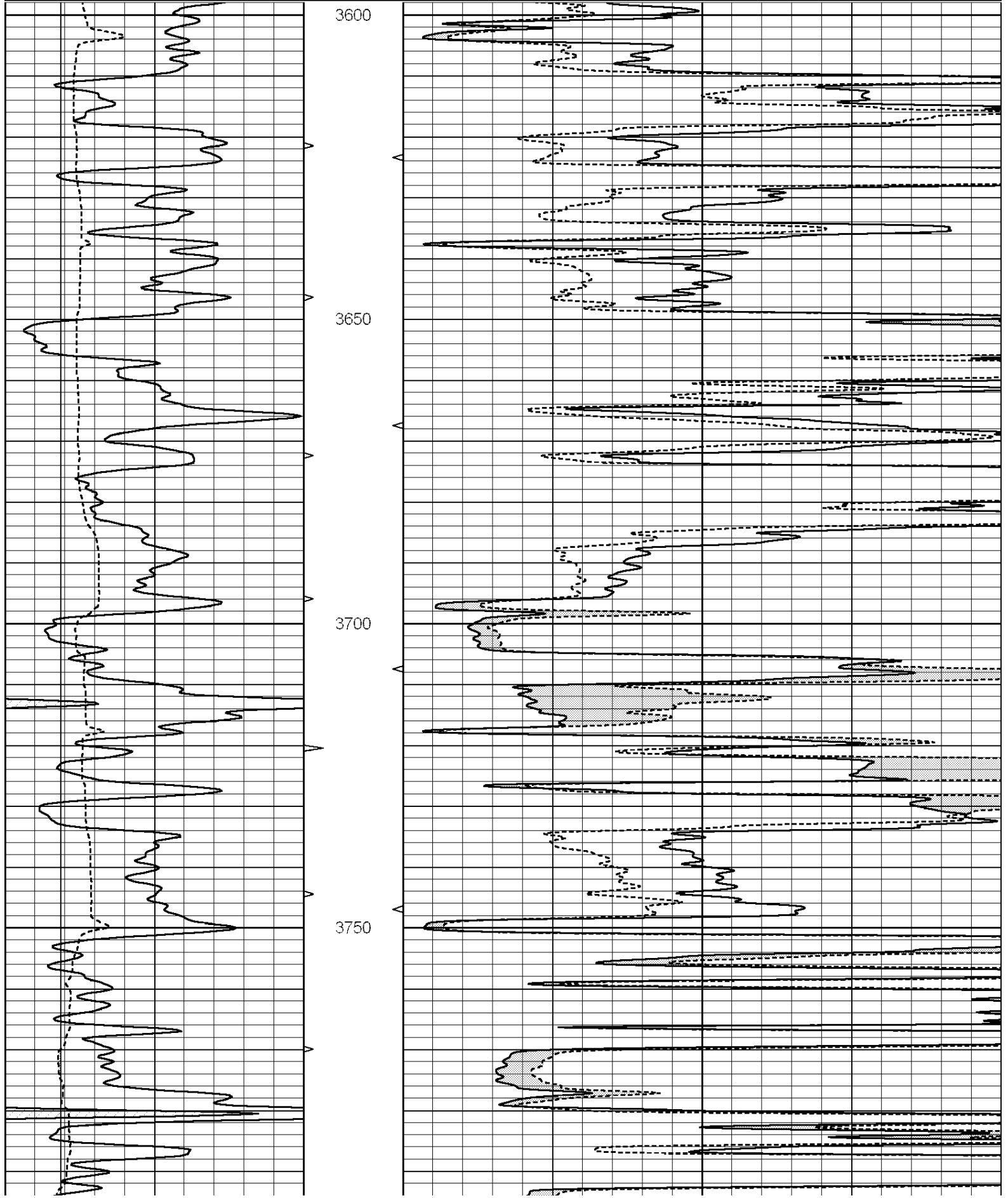
All interpretations are opinions based on inferences from electrical or other measurements and we cannot and do not guarantee the accuracy or correctness of any interpretation, and we shall not, except in the case of gross or willful negligence on our part, be liable or responsible for any loss, costs, damages, or expenses incurred or sustained by anyone resulting from any interpretation made by any of our officers, agents or employees. These interpretations are also subject to our general terms and conditions set out in our current Price Schedule.

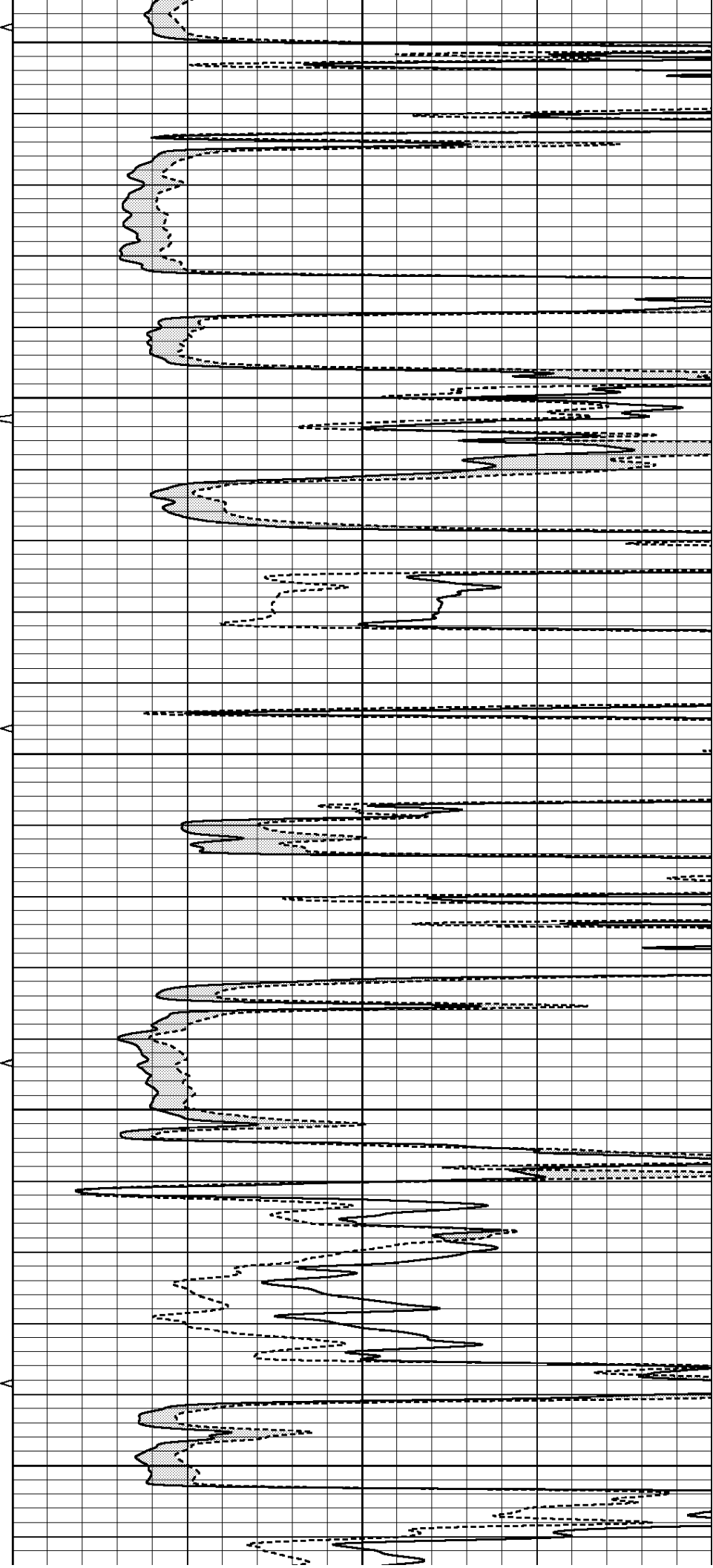
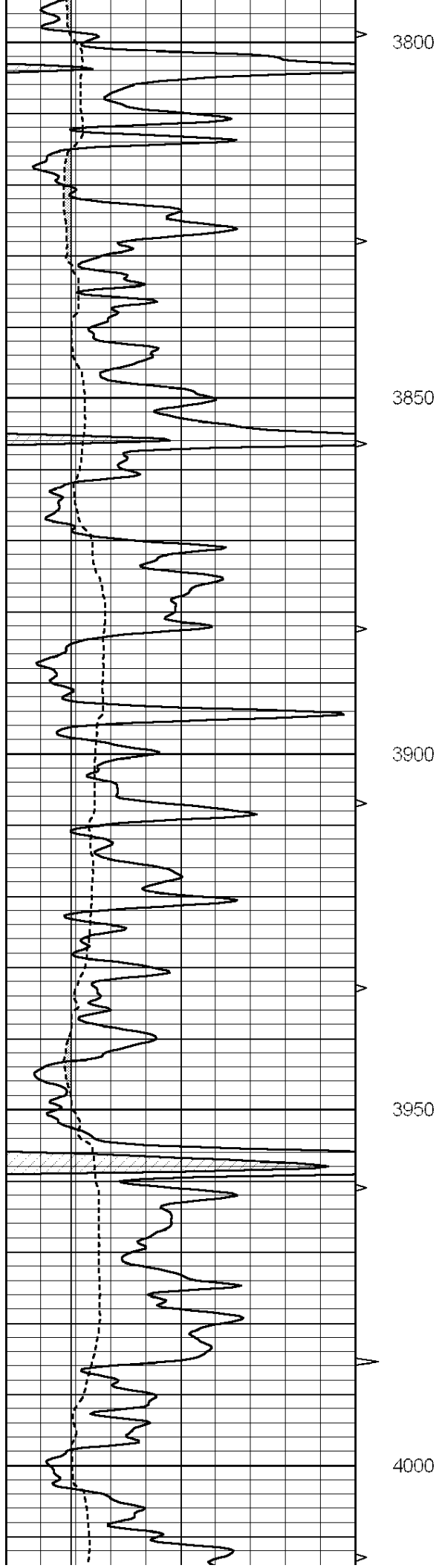
Comments

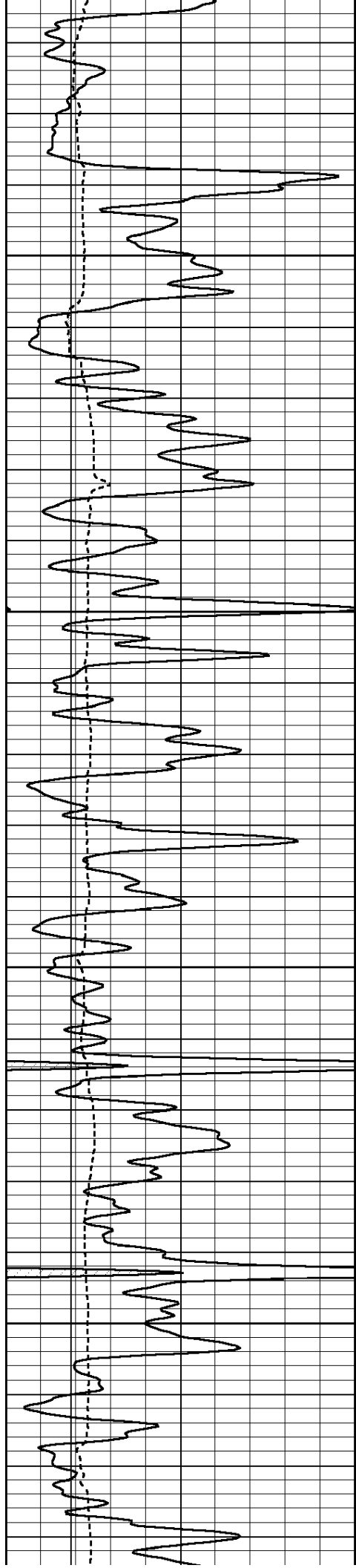
THANK YOU FOR USING SUPERIOR WELL SERVICE (785) 628-6395
DIRECTIONS
BRANDON, CO - 9.3 MILES NORTH - .3 MILES WEST - SOUTH INTO

Database File: 006801pe.db
Dataset Pathname: pass6.1
Presentation Format: _micro
Dataset Creation: Tue Apr 05 09:48:52 2011 by Calc Open-Cased 090629
Charted by: Depth in Feet scaled 1:240

Charted by:		Depth in Feet scaled 1:2.15				
0	GAMMA RAY (GAPI)	150	ABHV	0	MEL1.5 (Ohm-m)	40
6	CALIPER (in)	16	10 (ft3)	0 0	MEL2.0 (Ohm-m)	40
		TBHV				
		0 (ft3)				
		10				





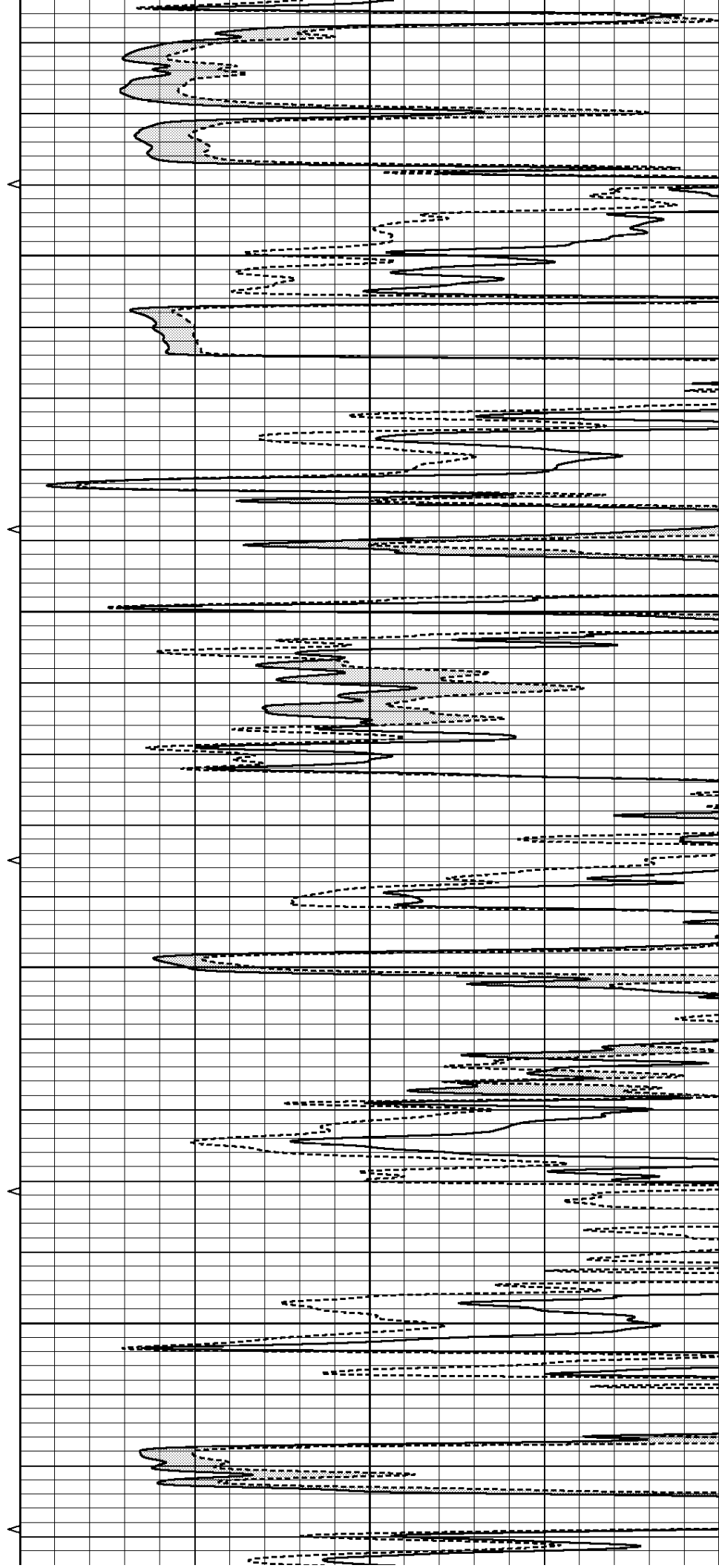


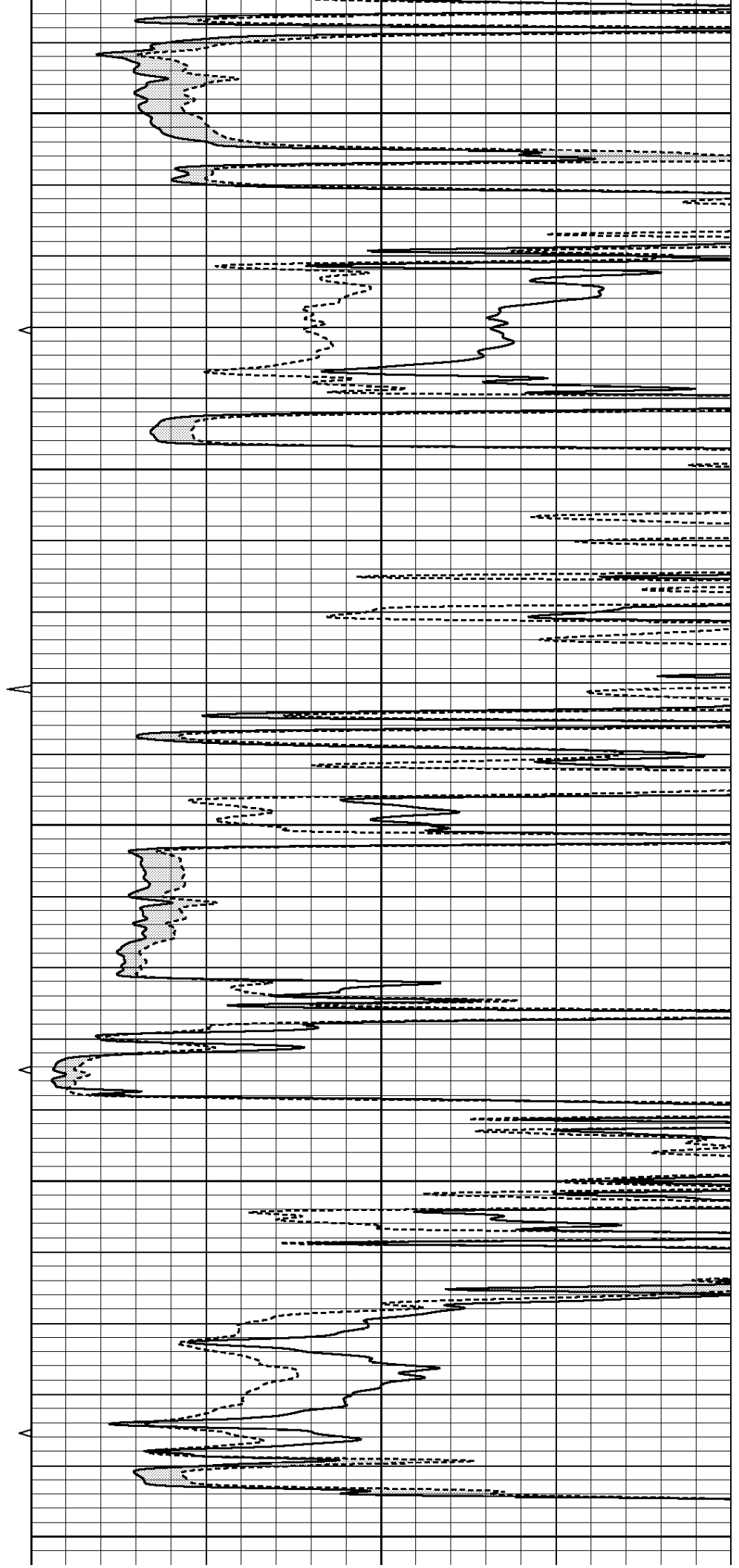
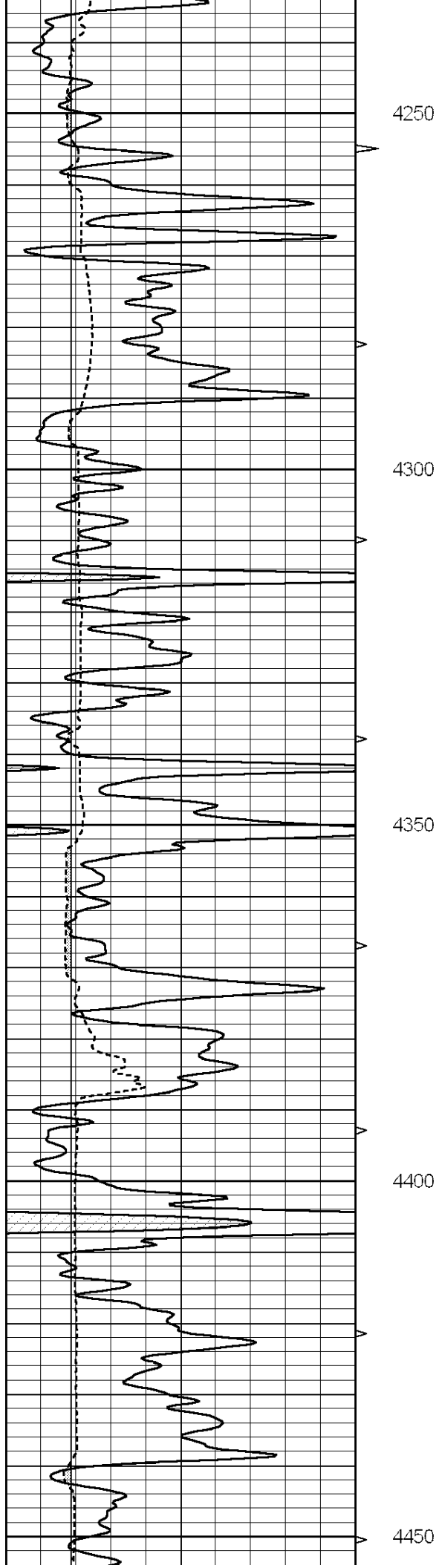
4050

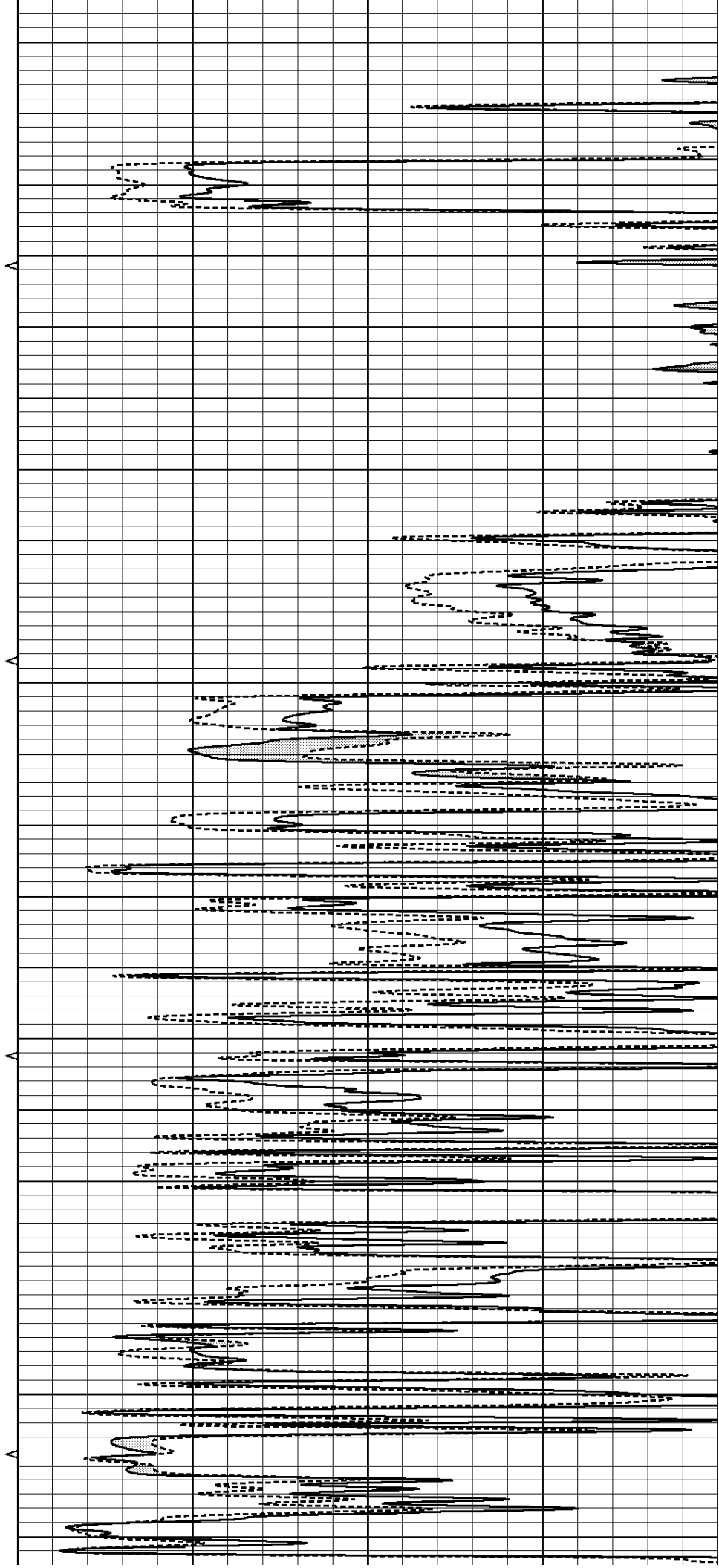
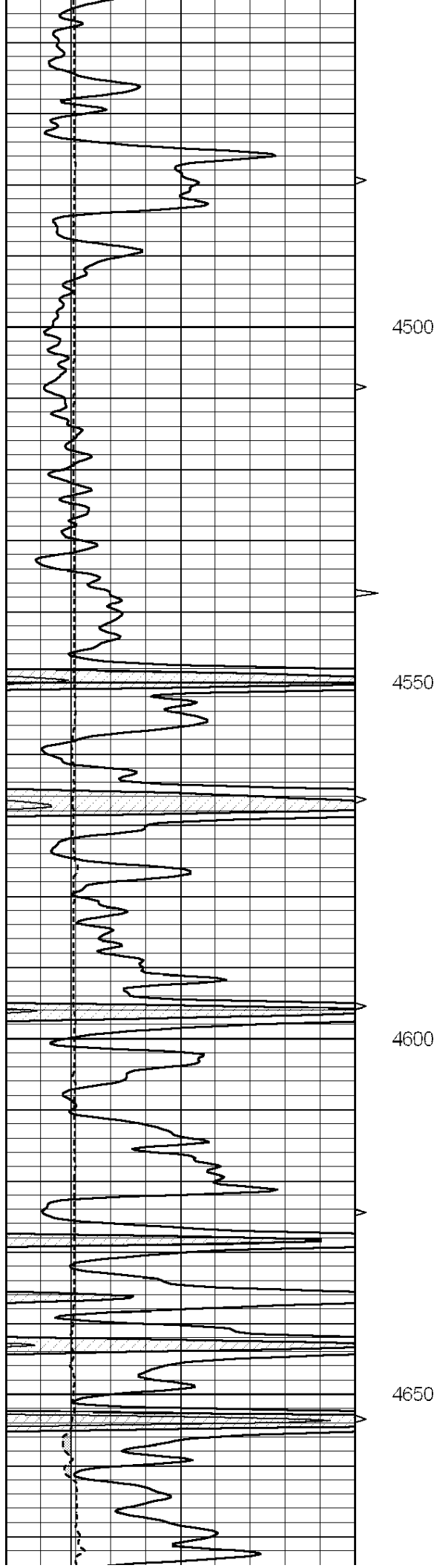
4100

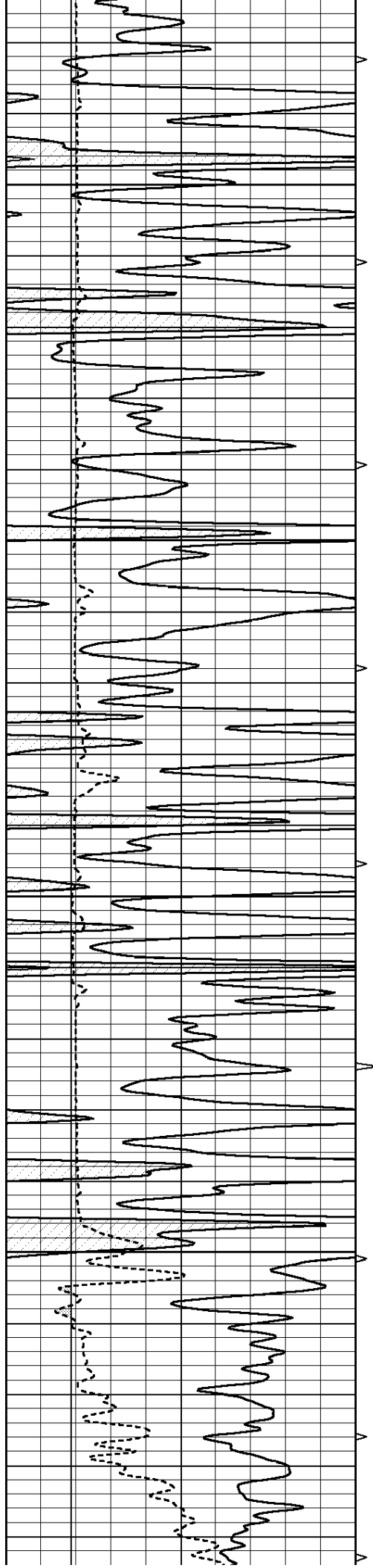
4150

4200







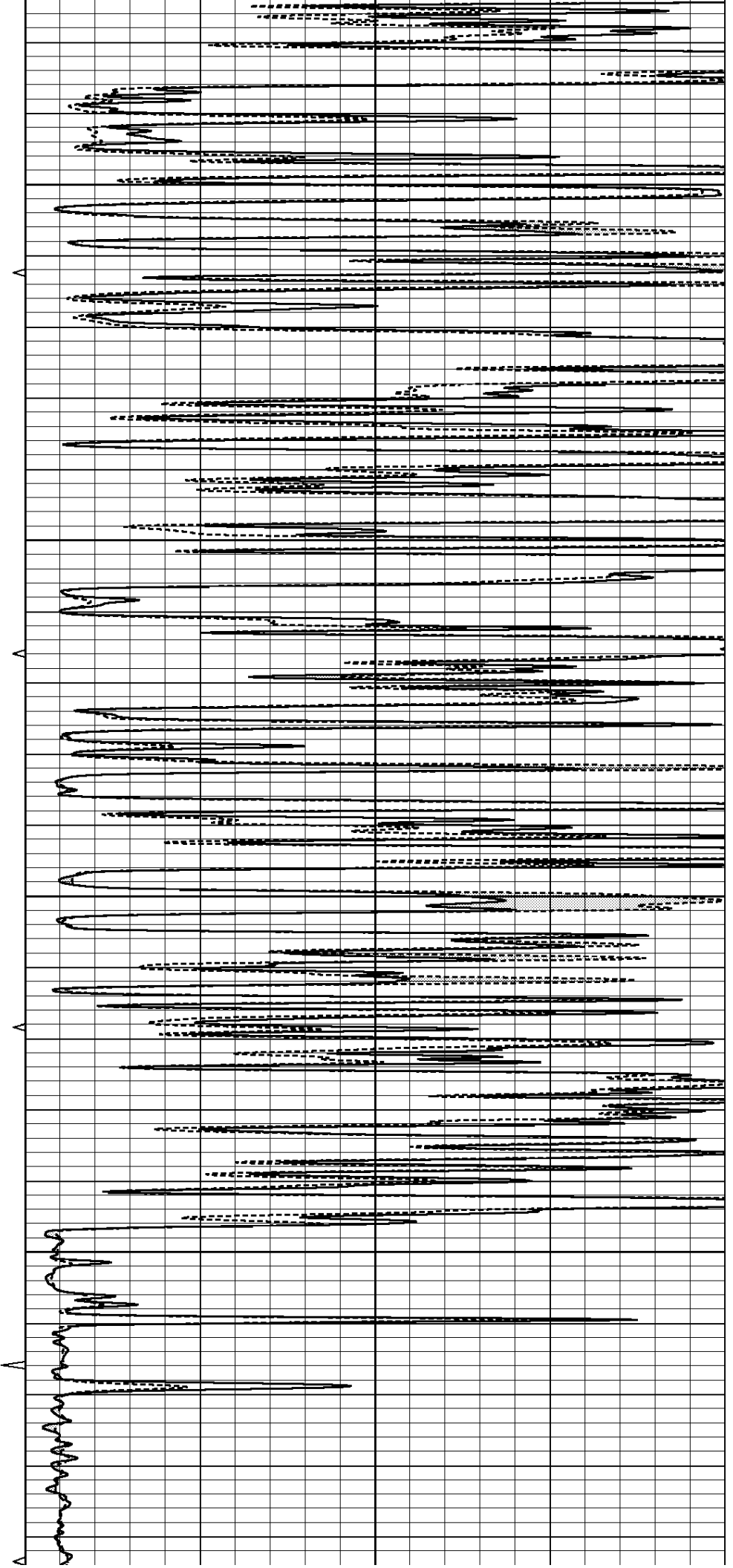


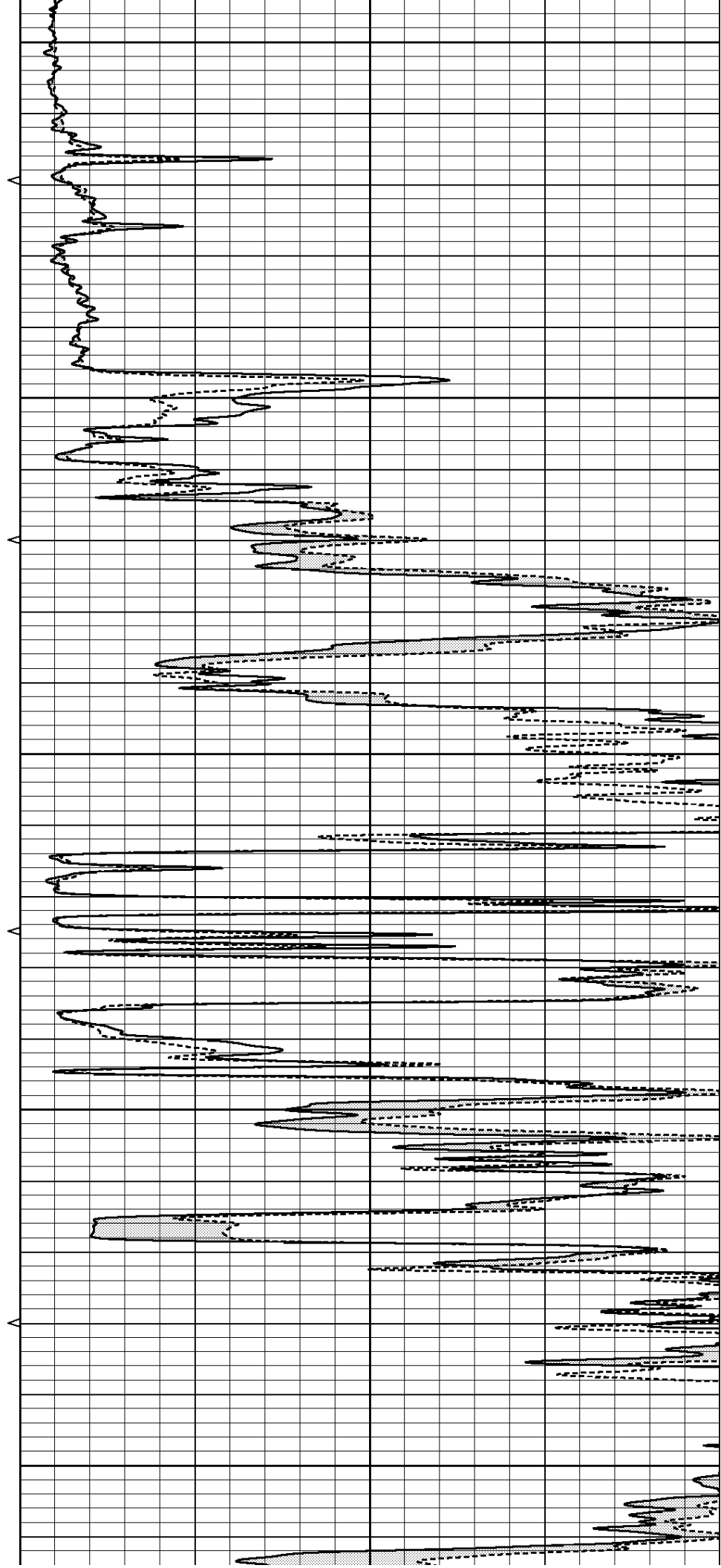
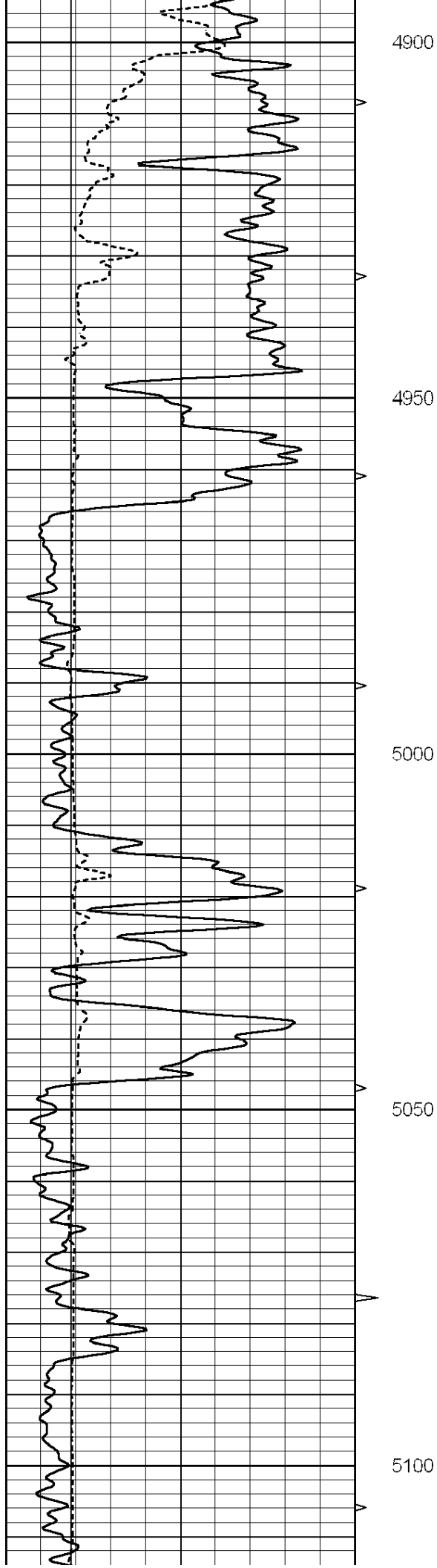
4700

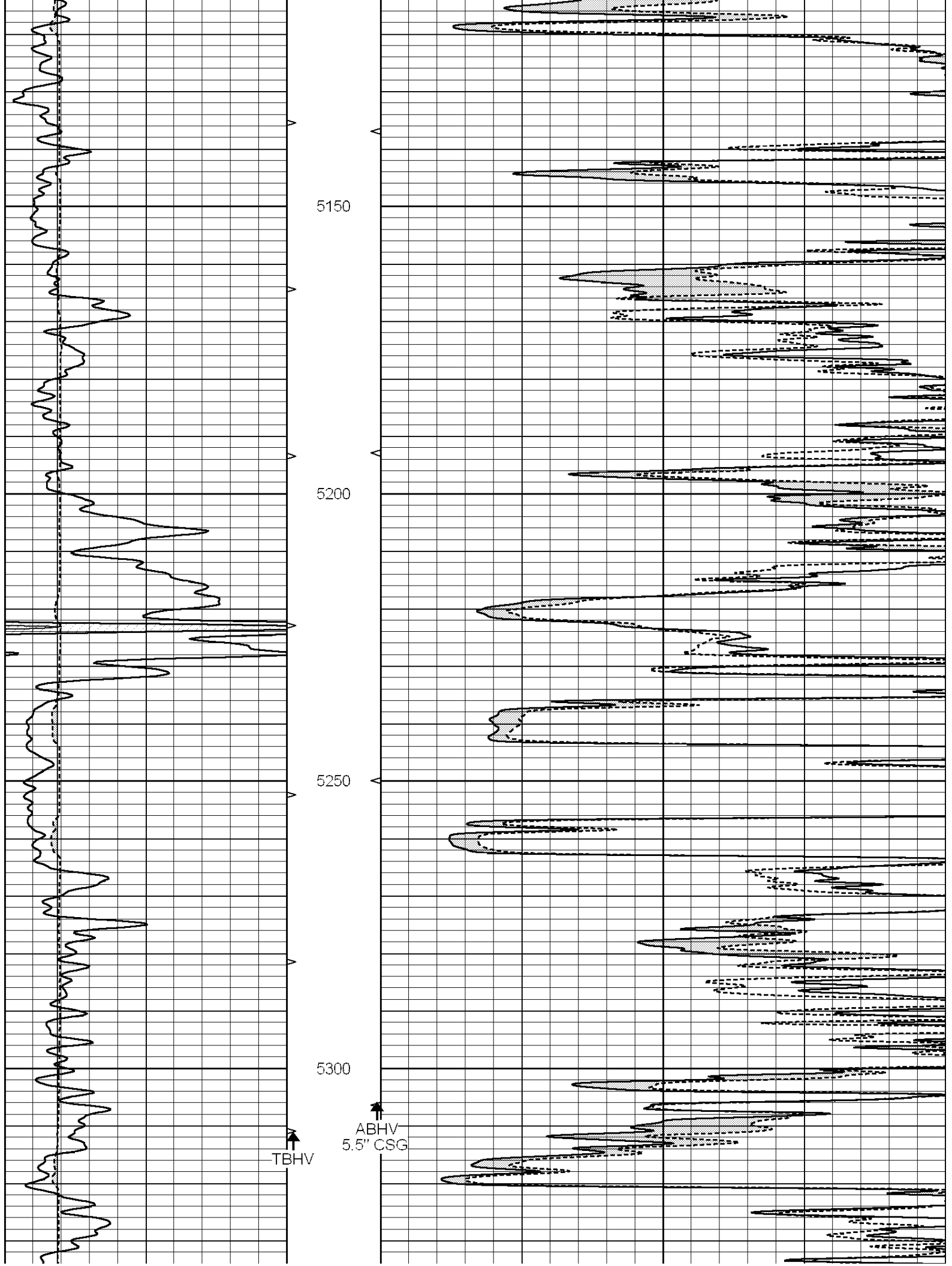
4750

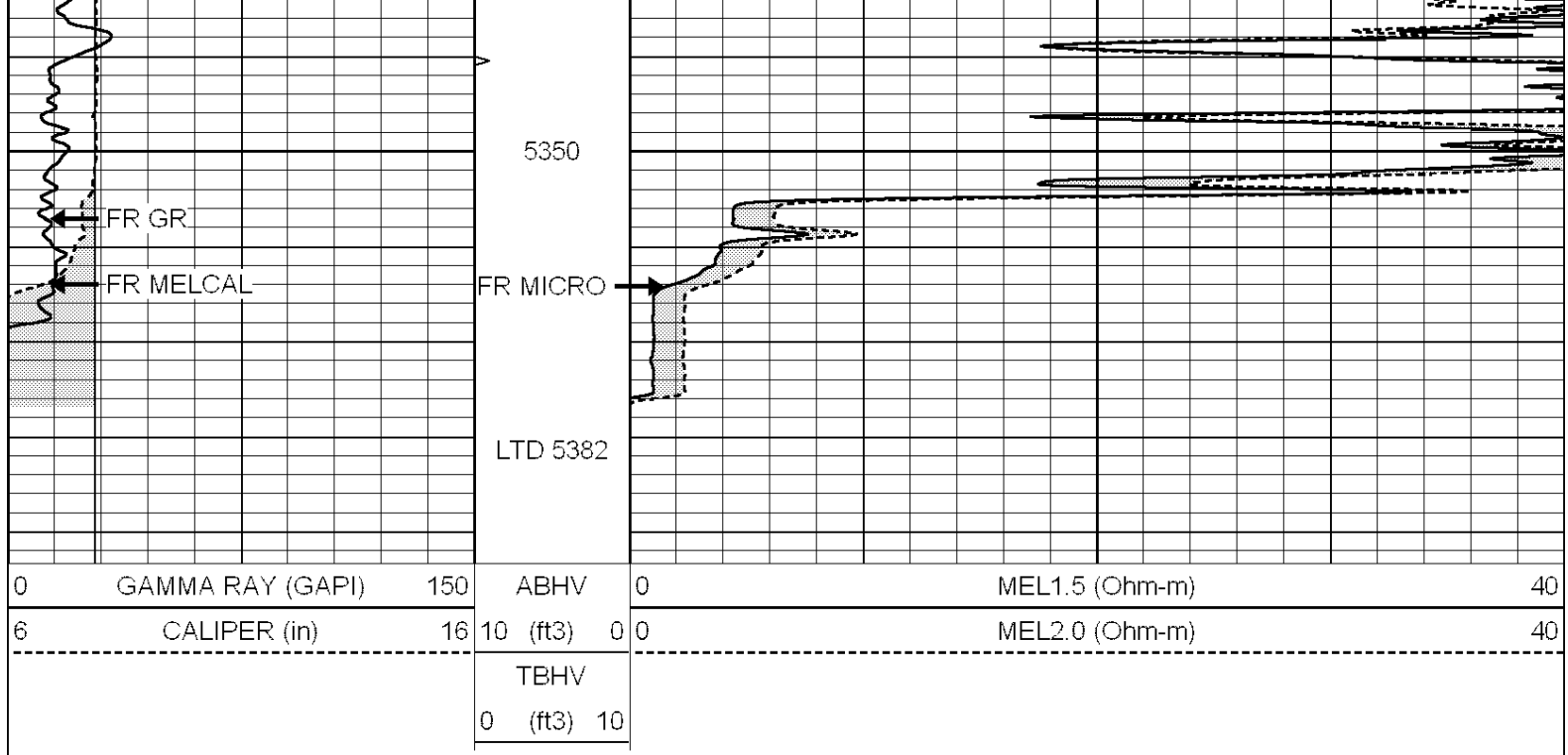
4800

4850







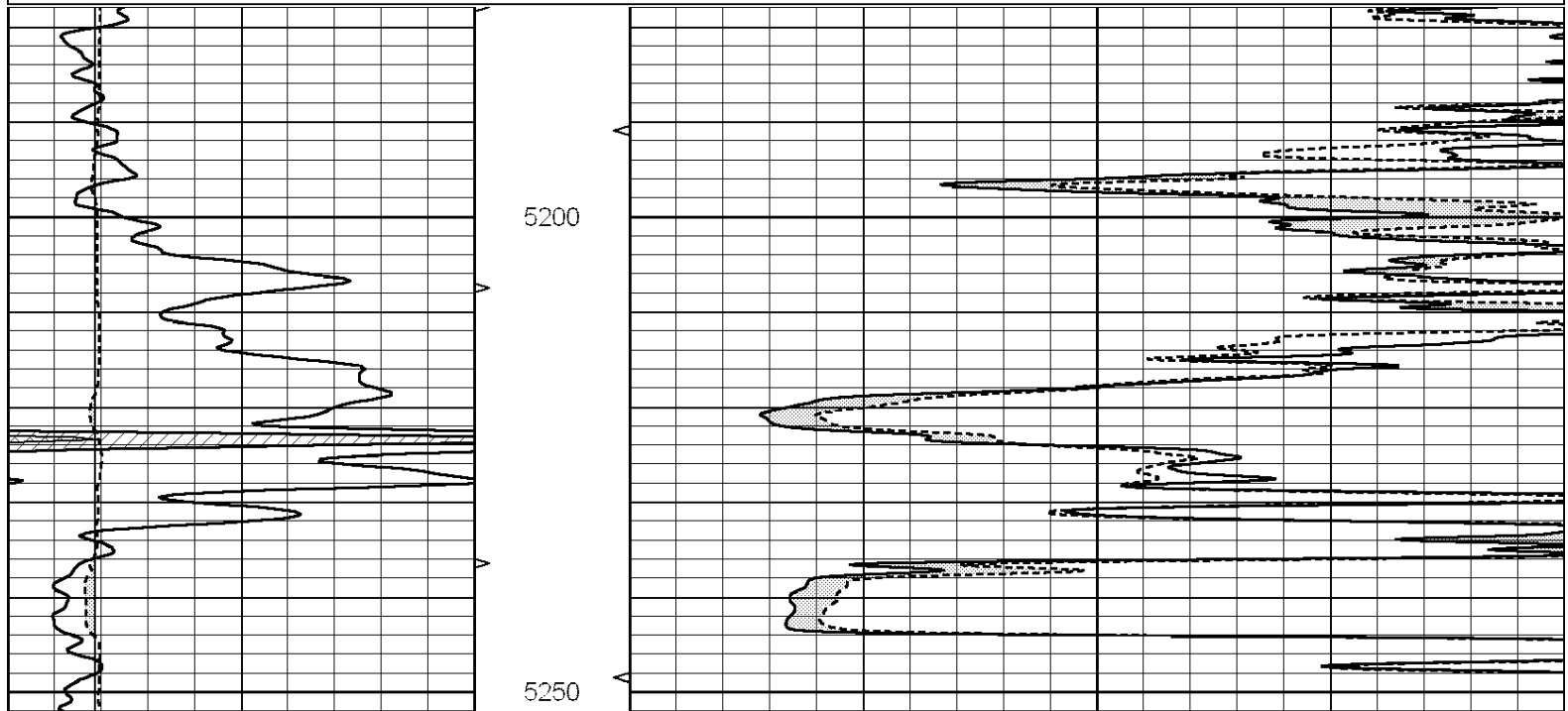


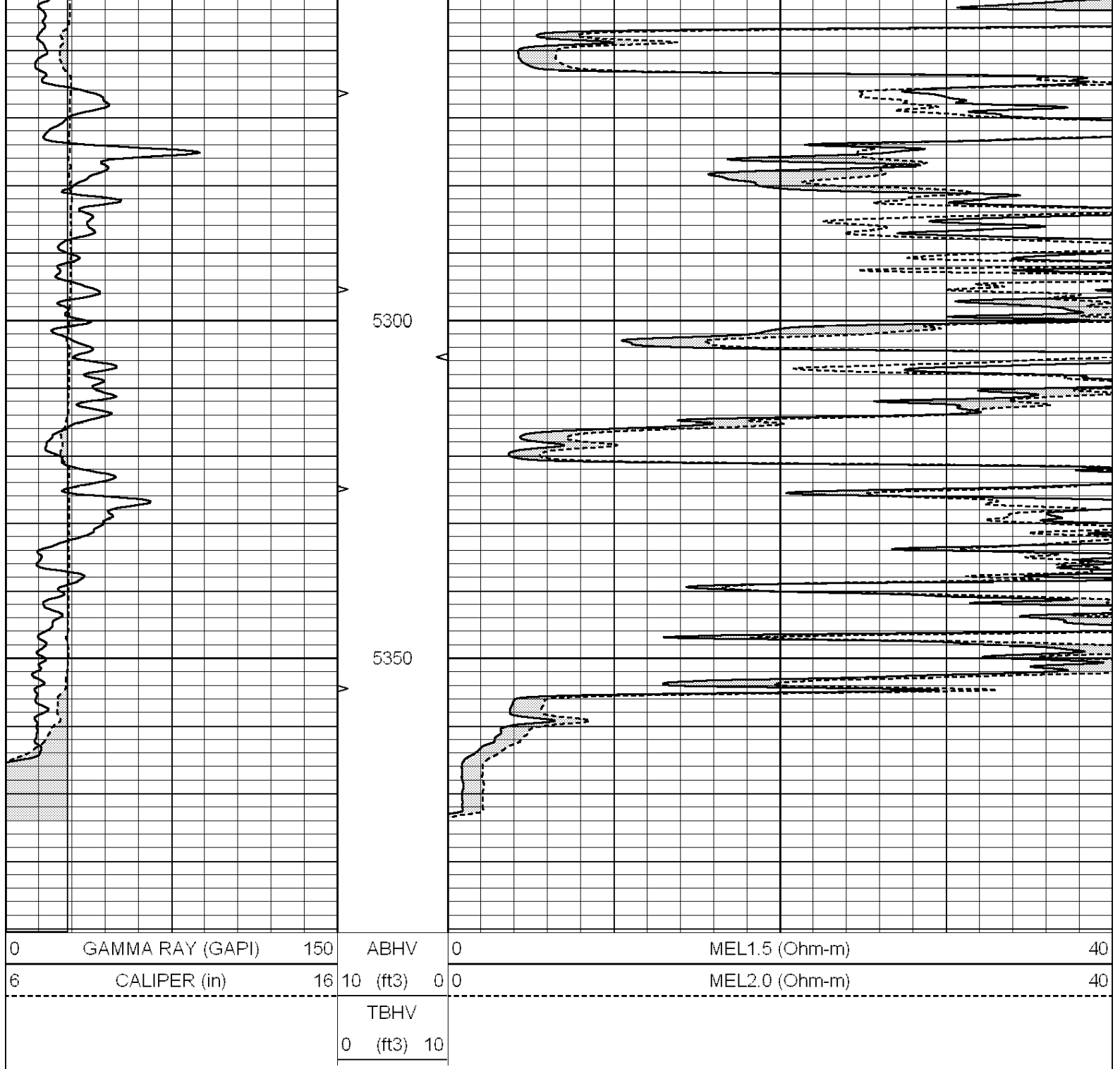
SUPERIOR
Hays,
Kansas

REPEAT SECTION

Database File: 006801pe.db
 Dataset Pathname: pass5.1
 Presentation Format: _micro
 Dataset Creation: Tue Apr 05 09:56:05 2011
 Charted by: Depth in Feet scaled 1:240

0	GAMMA RAY (GAPI)	150	ABHV	0	MEL1.5 (Ohm-m)	40
6	CALIPER (in)	16	10 (ft3)	0	MEL2.0 (Ohm-m)	40
			TBHV			
			0 (ft3)	10		





Calibration Report

Database File: 006801pe.db
 Dataset Pathname: pass6.1
 Dataset Creation: Tue Apr 05 09:48:52 2011 by Calc Open-Cased 090629

MICRO Calibration Report

Serial Number: MICRO6
 Tool Model: PROBE
 Performed: Mon Apr 04 05:13:13 2011

Caliper Calibration: Gain=5.211 Offset=0.160

	Low Cal	High Cal
References	8.000	14.000
Readings	1.178	2.330

1.5" Calibration:	Gain=35.075	Offset=-0.650
References	Low Cal 0.000	High Cal 20.000
Readings	0.004	1.196
2" Calibration:	Gain=32.041	Offset=0.000
References	Low Cal 0.000	High Cal 20.000
Readings	0.006	0.913
Gamma Ray Calibration Report		
Serial Number:	#8	
Tool Model:	OPEN	
Performed:	Fri Feb 18 03:07:29 2011	
Calibrator Value:	150.0	GAPI
Background Reading:	0.0	cps
Calibrator Reading:	175.0	cps
Sensitivity:	0.8971	GAPI/cps