

---

**NOBLE ENERGY INC E-BUSINESS**

---

**HYRUP 11-41B  
GRAND VALLEY  
Garfield County , Colorado**

**Cement Surface Casing**  
**26-Oct-2010**

**Post Job Report**

## The Road to Excellence Starts with Safety

Sold To #: 345242	Ship To #: 2815344	Quote #:	Sales Order #: 7729505
Customer: NOBLE ENERGY INC E-BUSINESS	Customer Rep: NEILSON, DAVE		
Well Name: HYRUP	Well #: 11-41B	API/UWI #: 05-045-14061	
Field: GRAND VALLEY	City (SAP): PARACHUTE	County/Parish: Garfield	State: Colorado
Lat: N 39.373 deg. OR N 39 deg. 22 min. 22.393 secs.	Long: W 108.073 deg. OR W -109 deg. 55 min. 37.283 secs.		
Contractor: H&P Drilling	Rig/Platform Name/Num: H&P 322		
Job Purpose: Cement Surface Casing			
Well Type: Development Well	Job Type: Cement Surface Casing		
Sales Person: METLI, MARSHALL	Srv Supervisor: HOEFER, BRYAN	MBU ID Emp #: 415775	

## Job Personnel

HES Emp Name	Exp Hrs	Emp #	HES Emp Name	Exp Hrs	Emp #	HES Emp Name	Exp Hrs	Emp #
GAMBLE, BENJAMIN T	7	446666	HOEFER, BRYAN D	7	415775	LEIST, JAMES R	7	362787

## Equipment

HES Unit #	Distance-1 way	HES Unit #	Distance-1 way	HES Unit #	Distance-1 way	HES Unit #	Distance-1 way
10713212	60 mile	10741123	60 mile	10872429	60 mile	11259885	60 mile
11360883	60 mile						

## Job Hours

Date	On Location Hours	Operating Hours	Date	On Location Hours	Operating Hours	Date	On Location Hours	Operating Hours
10/26/2010	7	2						

**TOTAL** Total is the sum of each column separately

## Job

Formation Name													Date		Time		Time Zone	
Formation Depth (MD)		Top				Bottom				Called Out		26 - Oct - 2010		11:00		MST		
Form Type				BHST						On Location		26 - Oct - 2010		14:00		MST		
Job depth MD		1512. ft		Job Depth TVD		1512. ft				Job Started		26 - Oct - 2010		19:53		MST		
Water Depth				Wk Ht Above Floor		3. ft				Job Completed		26 - Oct - 2010		20:51		MST		
Perforation Depth (MD)		From				To				Departed Loc								

## Well Data

Description	New / Used	Max pressure psig	Size in	ID in	Weight lbm/ft	Thread	Grade	Top MD ft	Bottom MD ft	Top TVD ft	Bottom TVD ft
-------------	------------	-------------------	---------	-------	---------------	--------	-------	-----------	--------------	------------	---------------

Sales/Rental/3<sup>rd</sup> Party (HES)

Description	Qty	Qty uom	Depth	Supplier
PLUG,CMTG,TOP,8 5/8,HWE,7.20 MIN/8.09 MA	1	EA		
R/A DENSOMETER W/CHART RECORDER,/JOB,ZI	1	JOB		
PORT. DAS W/CEMWIN;ACQUIRE W/HES, ZI	1	JOB		
ADC (AUTO DENSITY CTRL) SYS, /JOB,ZI	1	JOB		

## Tools and Accessories

Type	Size	Qty	Make	Depth	Type	Size	Qty	Make	Depth	Type	Size	Qty	Make
Guide Shoe					Packer					Top Plug	8.625"	1	
Float Shoe					Bridge Plug					Bottom Plug			
Float Collar					Retainer					SSR plug set			
Insert Float										Plug Container			
Stage Tool										Centralizers			

## Miscellaneous Materials

Gelling Agt	Conc	Surfactant	Conc	Acid Type	Qty	Conc	%
Treatment Fld	Conc	Inhibitor	Conc	Sand Type	Size	Qty	

## Fluid Data

Stage/Plug #: 1									
Fluid #	Stage Type	Fluid Name	Qty	Qty uom	Mixing Density lbm/gal	Yield ft3/sk	Mix Fluid Gal/sk	Rate bbl/min	Total Mix Fluid Gal/sk

1	Water Spacer		20.00	bbl	8.33	.0	.0	6	
2	Lead Cement	VERSACEM (TM) SYSTEM (452010)	202.0	sacks	12.3	2.38	13.75	6	13.75
	13.75 Gal	FRESH WATER							
3	Tail Cement	VERSACEM (TM) SYSTEM (452010)	126.0	sacks	12.8	2.11	11.75	6	11.75
	11.75 Gal	FRESH WATER							
4	Displacement		91.5	bbl	8.33	.0	.0	8	
<b>Calculated Values</b>		<b>Pressures</b>		<b>Volumes</b>					
Displacement	91.5	Shut In: Instant		Lost Returns	0	Cement Slurry	132.9	Pad	
Top Of Cement	SURFACE	5 Min		Cement Returns	11	Actual Displacement	91.5	Treatment	
Frac Gradient		15 Min		Spacers	20	Load and Breakdown		Total Job	
<b>Rates</b>									
Circulating	6	Mixing	6	Displacement	8	Avg. Job	7		
Cement Left In Pipe	Amount	42.13 ft	Reason	Shoe Joint					
Frac Ring # 1 @	ID	Frac ring # 2 @	ID	Frac Ring # 3 @	ID	Frac Ring # 4 @	ID		
The Information Stated Herein Is Correct				Customer Representative Signature					

*The Road to Excellence Starts with Safety*

<b>Sold To #:</b> 345242	<b>Ship To #:</b> 2815344	<b>Quote #:</b>	<b>Sales Order #:</b> 7729505
<b>Customer:</b> NOBLE ENERGY INC E-BUSINESS		<b>Customer Rep:</b> NEILSON, DAVE	
<b>Well Name:</b> HYRUP	<b>Well #:</b> 11-41B	<b>API/UWI #:</b> 05-045-14061	
<b>Field:</b> GRAND VALLEY	<b>City (SAP):</b> PARACHUTE	<b>County/Parish:</b> Garfield	<b>State:</b> Colorado
<b>Legal Description:</b>			
<b>Lat:</b> N 39.373 deg. OR N 39 deg. 22 min. 22.393 secs.		<b>Long:</b> W 108.073 deg. OR W -109 deg. 55 min. 37.283 secs.	
<b>Contractor:</b> H&P Drilling		<b>Rig/Platform Name/Num:</b> H&P 322	
<b>Job Purpose:</b> Cement Surface Casing			<b>Ticket Amount:</b>
<b>Well Type:</b> Development Well		<b>Job Type:</b> Cement Surface Casing	
<b>Sales Person:</b> METLI, MARSHALL		<b>Srv Supervisor:</b> HOEFER, BRYAN	<b>MBU ID Emp #:</b> 415775

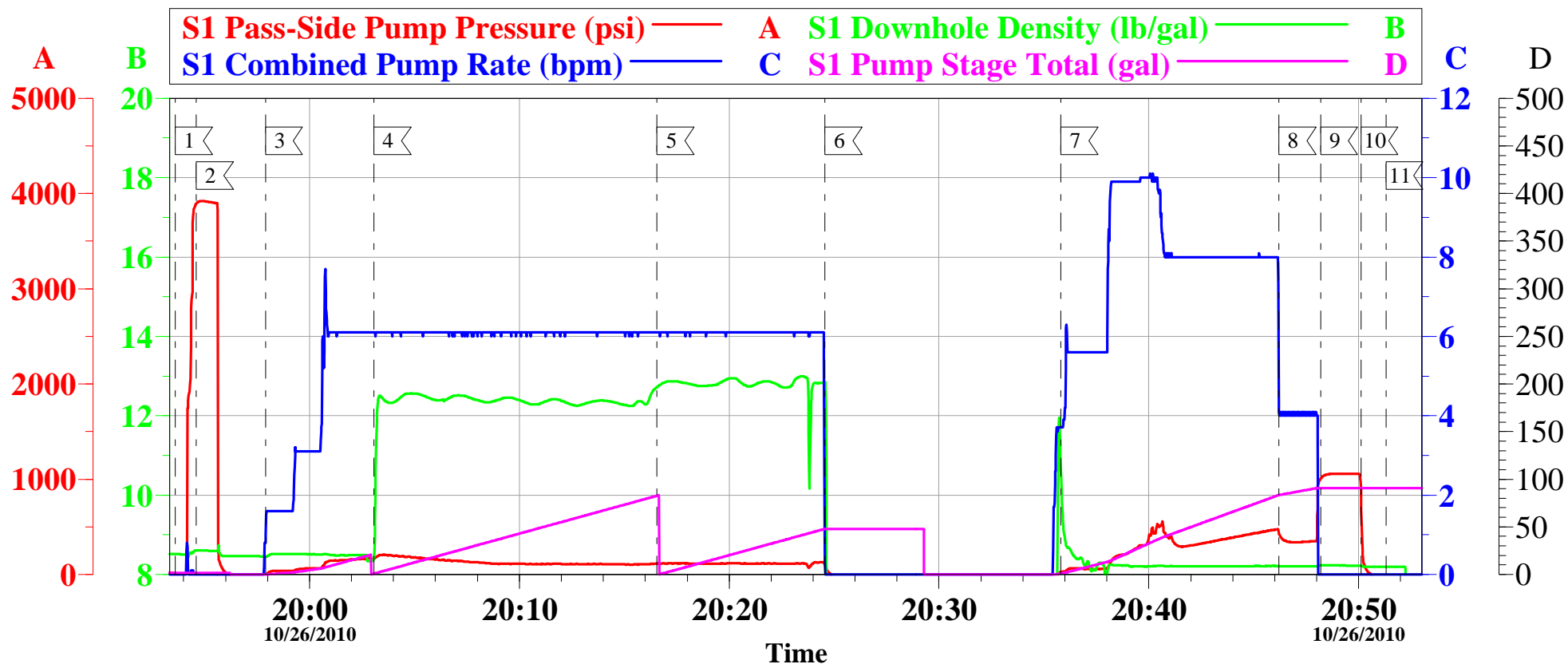
Activity Description	Date/Time	Cht #	Rate bbl/min	Volume bbl		Pressure psig		Comments
				Stage	Total	Tubing	Casing	
Arrive At Loc	10/26/2010 02:00							ARRIVED 1.5 HRS EARLY, RUNNING WIPER TRIP UPON ARRIVAL
Assessment Of Location Safety Meeting	10/26/2010 02:30							WITH ALL HES EE'S
Call Out	10/26/2010 11:00							
Pre-Convoy Safety Meeting	10/26/2010 12:30							WITH ALL HES EE'S
Depart from Service Center or Other Site	10/26/2010 12:30							
Pre-Rig Up Safety Meeting	10/26/2010 16:30							WITH ALL HES EE'S
Rig-Up Equipment	10/26/2010 16:35							IRON TO SWEDGE, WATER LINES, 1 660 BULK TRUCK, F-550
Other	10/26/2010 16:36							PUMPED CEMENT JOB OFFLINE, PUMPED THROUGH A SWEDGE
Pre-Job Safety Meeting	10/26/2010 19:30							WITH ALL HES EE'S AND RIG CREW
Start Job	10/26/2010 19:51							TD-1512', TP-1481', SJ-42.13', MUD, OH-12 1/4", 8 5/8" CASING 24#
Prime Pumps	10/26/2010 19:52		2	2			76.0	FRESH WATER
Test Lines	10/26/2010 19:54		0.5	0.5			3800.0	TESTED TO 3800psi, TEST HELD GREAT
Pump Spacer	10/26/2010 19:57		6	20			180.0	FRESH WATER
Pump Lead Cement	10/26/2010 20:03		6	85.6			219.0	202sks OF VERSACEM PUMPED @ 12.3#, 2.38 ft3/sk, 13.75 gal/sk

## Cementing Job Log

Activity Description	Date/Time	Cht #	Rate bbl/ min	Volume bbl		Pressure psig		Comments
				Stage	Total	Tubing	Casing	
Pump Tail Cement	10/26/2010 20:16		6	47.3			130.0	126sks OF VERSACEM PUMPED @ 12.8#, 2.11 ft3/sk, 11.75 gal/sk
Shutdown	10/26/2010 20:24							
Drop Top Plug	10/26/2010 20:33							UNSCREWED SWEDGE TO DROP TOP PLUG
Pump Displacement	10/26/2010 20:35		8	91.5			435.0	FRESH WATER
Slow Rate	10/26/2010 20:46		4	80			360.0	LAST 10 BBLS
Bump Plug	10/26/2010 20:48		4	91.5			860.0	TOOK 500psi OVER
Check Floats	10/26/2010 20:50							FLOATS HELD
End Job	10/26/2010 20:51							GOOD RETURNS THROUGHOUT JOB, 11 BBLS BACK TO THE PIT
Post-Job Safety Meeting (Pre Rig-Down)	10/26/2010 20:55							WITH ALL HES EE'S
Rig-Down Equipment	10/26/2010 22:00							
Pre-Convoy Safety Meeting	10/26/2010 22:35							WITH ALL HES EE'S
Depart Location for Service Center or Other Site	10/26/2010 22:40							THANK YOU FOR USING GRAND JUNCTION HALLIBURTON CEMENT, BRYAN HOEFER AND CREW

# NOBLE

## HYRUP 11-41B, SURFACE



### Local Event Log

Maximum		SPPP	Maximum		SPPP
1	START JOB	19:53:36 3891	2	TEST LINES	19:54:36 3920
3	PUMP SPACER	19:57:54 170.3	4	PUMP LEAD CEMENT	20:03:04 206.3
5	PUMP TAIL CEMENT	20:16:34 130.3	6	SHUT DOWN/DROP PLUG	20:24:34 103.3
7	PUMP DISPLACEMENT	20:35:49 558.3	8	SLOW RATE	20:46:12 1005
9	BUMP PLUG	20:48:11 1056	10	CHECK FLOATS	20:50:06 979.3
11	END JOB	20:51:18 62.30			

Customer: NOBLE  
 Well Description: HYRUP 11-41B  
 Customer Rep: CHARLES CULVER

Job Date: 26-Oct-2010  
 Job type: SURFACE  
 Service Supervisor: BRYAN HOEFER

Sales Order #: 7729505  
 ADC Used: YES  
 Operator/ Pump: LEIST/ 7

OptiCem v6.4.9  
 26-Oct-10 21:11